

A home in a home

A design proposal of a dementia village in Gothenburg.

Sofia Nordin, Olga Peterson & Jessica Pleijel



A home in a home

Dementia village

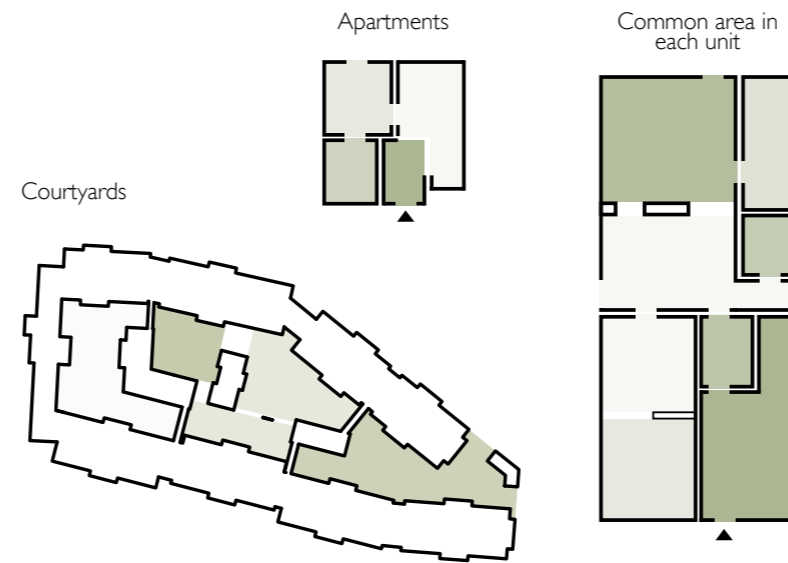
The concept of dementia villages was developed in de Hogeweyk in Netherlands, but there are yet no examples in Sweden. The idea is that people with dementia should be able to live as normal as possible in an environment with qualities of a small village.

Dementia is changes in the brain that affect memory and thought abilities. The ability to think, to plan and find your way, to take own initiative, to experience feelings as before and to control your feelings are some things that are affected as a person moves further into the different stages of the illness.

Concept

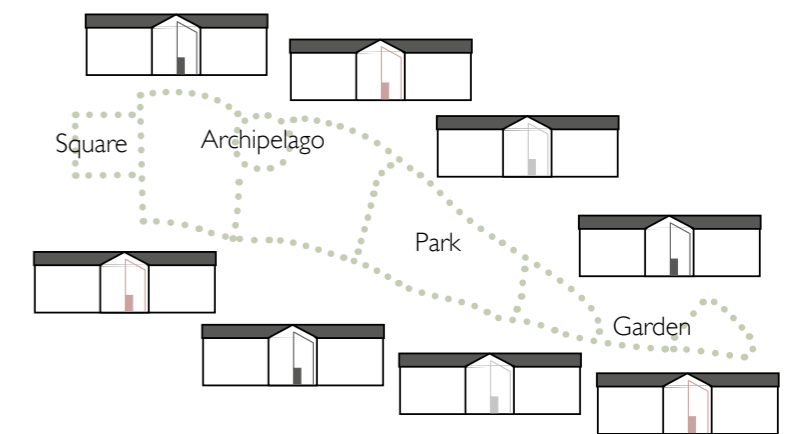
This project is focusing on creating **a new home** for people with dementia that actually feels like a home. The definition of a home in this project is a place that feels **secure** where you can continue to live your daily life as **independent** as possible. In a village you have everything you need from different kinds of shops to daily activities.

Security and independency is created by designing **enclosed spaces** with good **wayfinding** where the individual can choose the level of privacy.



Enclosed spaces

Intimate and enclosed spaces create a feeling of being secure where the residents can choose their level of privacy. This has shaped the project in all scales where the courtyards, units and apartments consist of room sequences of different sizes.



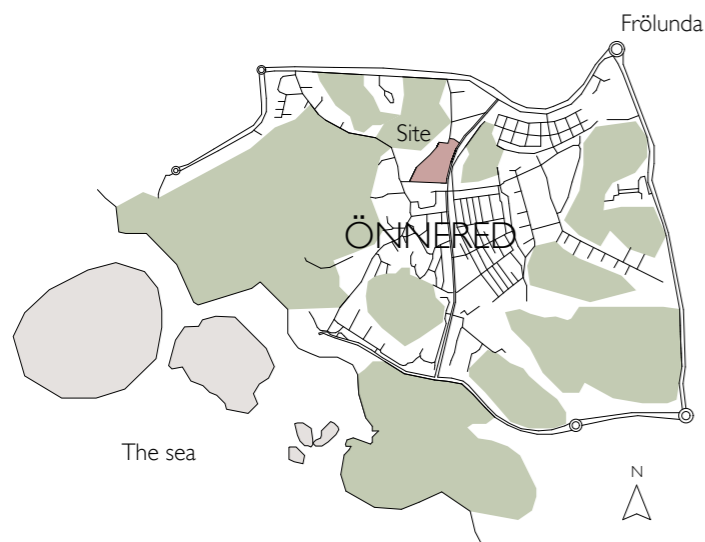
Wayfinding

Wayfinding is an important aspect which strengthens the sense of security and independence. Different themes in the courtyards and variation in colours on window and door frames create a recognition. All walking paths are connected in a circular movement and natural barriers leads the way back to the starting point.

Siteplan

Context

This master studio is about designing a dementia village in Önnered, Gothenburg on a site which is currently planned for assisted living. The site is an open grass field where two story homes are the majority of the housing typology around the site.



Program

Following a specific program, there are 180 apartments divided into 16 units. The common areas that are shared in each unit, are directed in a way to create a distance to the neighbours.

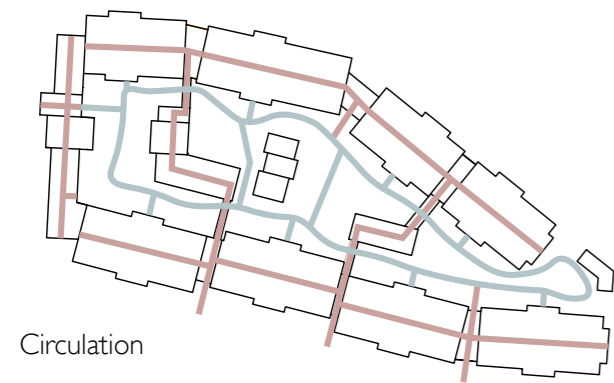


siteplan 1:1000 0 5 10 25 m N

Circulation

There is one main entrance directed towards the south to connect to the future development of the assisted living (trygghetsboende). This visible and inviting entrance is for everyone to use. There is also several other entrances for staff and they can reach all spaces in the building walking indoors.

To create a calm and secure indoor environment the residents only walk outside in the courtyards when they would like to leave their unit and not through others homes (other units).



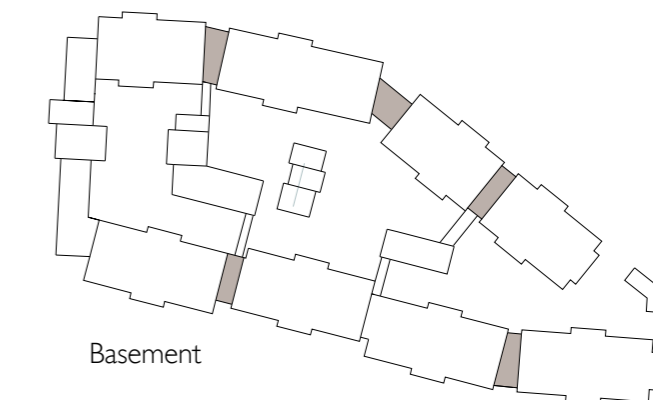
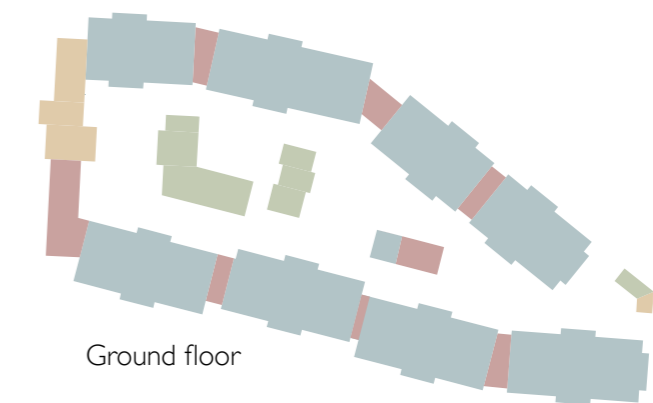
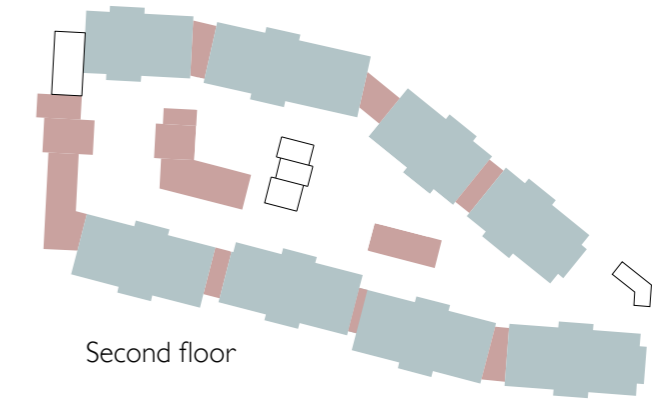
Functions

The whole building is maximum two floors above the ground and small basements with technical rooms. Two large dressing rooms and lunch room for staff are centrally located and easy to reach. Administration is located close to the main entrance where also the restaurant is placed connecting to the square outside the building. Other public functions are spread out connecting to the courtyards.

Inviting society

The dementia village welcomes society to go to the restaurant, by some plants in the green house where the residents participates in the allotment or maybe rent the winter garden in connection to the restaurant. The square can be used for different public activities that also invites the neighbourhood such as a small market.

- Residents
- Staff
- Public functions
- Common activities
- Technical rooms



Outdoor spaces

A sequence of rooms

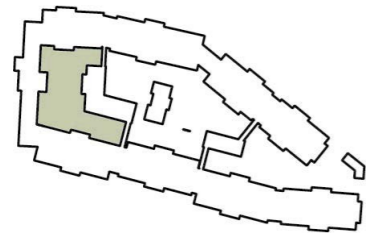
Residents and visitors can walk around and experience the sequence of courtyards with different themes and activities. The different themes help with wayfinding as the residents can recognise if they live close to the syrena bushes in the garden or by the large trees in the park.

Healing environments

The outdoor spaces are also important to create a healing environment. Evidence-based design shows healing architecture such as nature reduces depression, increases health and wellbeing, according to Roger Ulrich, Professor of Architecture. This is why the outdoor spaces are a central part of this project.



The square

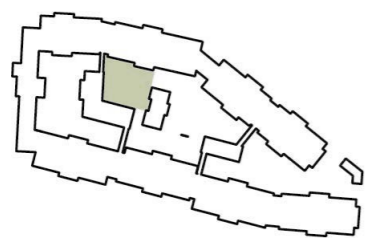


Meeting point

The square is a meeting point where the large open space allows for many different types of activities. It can be a public place for both residents and neighbours. Here you can gather for restaurant visits or to go to the pub. Foot care, hairdresser and food store are also connected to this square.



The archipelago

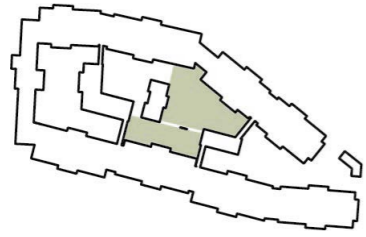


Calming environment

This courtyard is an oasis with an atmosphere that reminds you of the sea, the archipelago. A calming environment that recreates those memories and promotes creativity is focus is this smaller courtyard. In connection to this environment, you find a small workshop and a studio for painting and ceramics.



The park

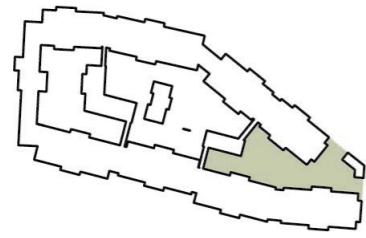


Activate and socialize

The park reminds of a city park where a café, gym, and library are placed around this inner courtyard. Here you can sit in the café, relax and watch those who play boule under the big trees. The park is also divided through a pergola.



The garden



Creative and playful

In this courtyard, there are apple trees, syrena bushes, berry bushes and opportunities for gardening. In addition, the garden has a greenhouse that invites neighbours in the area to come and by some plants. It is a creative and playful atmosphere which is also children friendly with a small playground.

This courtyard is opening up to the surroundings with natural borders, such as bushes, allotments and a ground level difference.



Second floor

Functions

Units have the same location on the second floor. This floor is otherwise for staff where dressing rooms and lunch area are centrally located. Open office and other administration rooms are located close to the main entrance. Here you can also see that staff can move through the whole building without having to go outside.



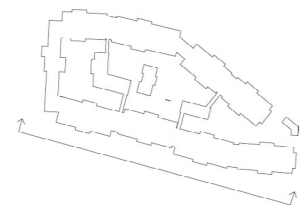
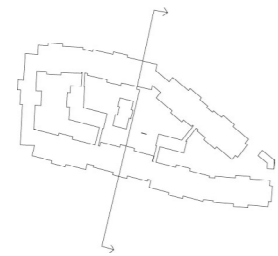
Building expression

Relates to the context

This Dementia Village aims to relate to its neighbours in a humble way. The interpretation of the context is small scale where two story homes are the majority of the housing typology. The pitched roof and wooden façade with small variations is brought into the project to relate to the context but with its unique modern expression.



- Single family houses
- Row houses
- Future development - Trygghetsboende
- Preschool

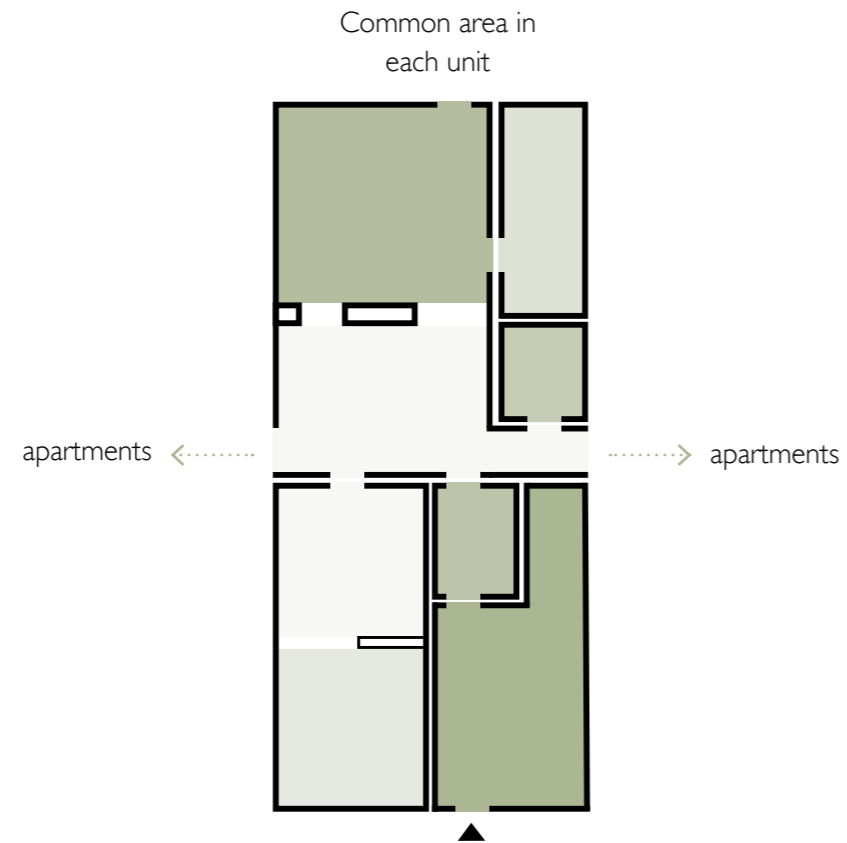




section 1:200 0 1 5 10 m



Units



Central common area

The units include 6-10 apartments that each share common facilities. Each unit have its own entrance from the outdoor environment. The units are based on a central common area with a sequences of rooms. The rooms division creates an opportunity for the residents to choose their level of privacy, which is one important factor of feeling secure. Some of the rooms are also divided in several smaller spaces such as the living room or the fire place that divides the kitchen area.

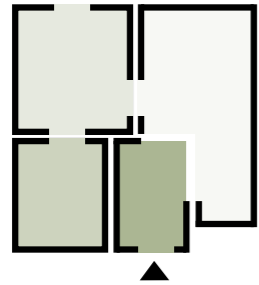
The apartments are placed on both sides of the common space. This creates the shortest possible corridor to the apartments. The niches outside each apartment also creates a variation instead of a straight corridor.

8 apartment unit



8 apartments unit, groundfloor 1:200 0 1 5 10 m N

Apartment



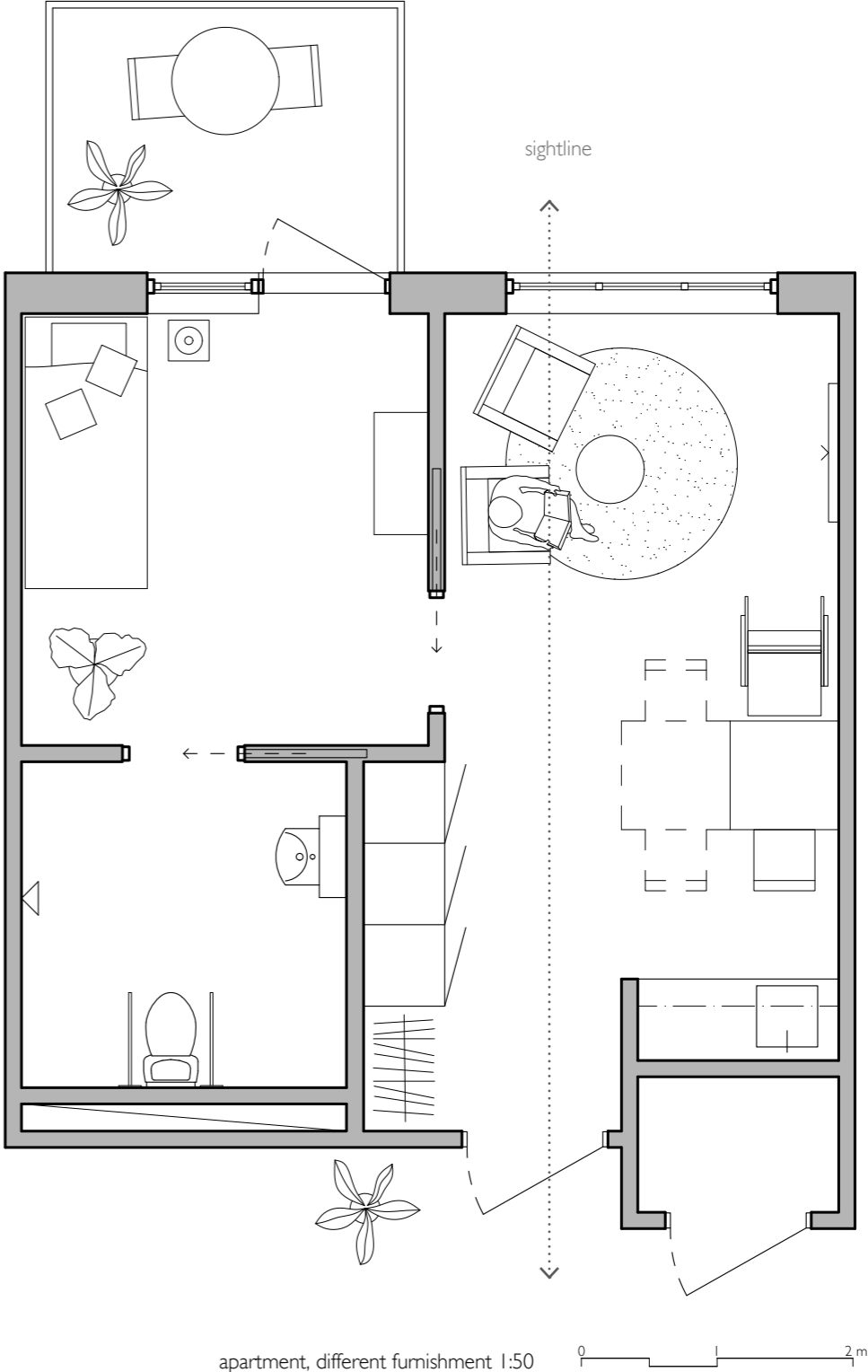
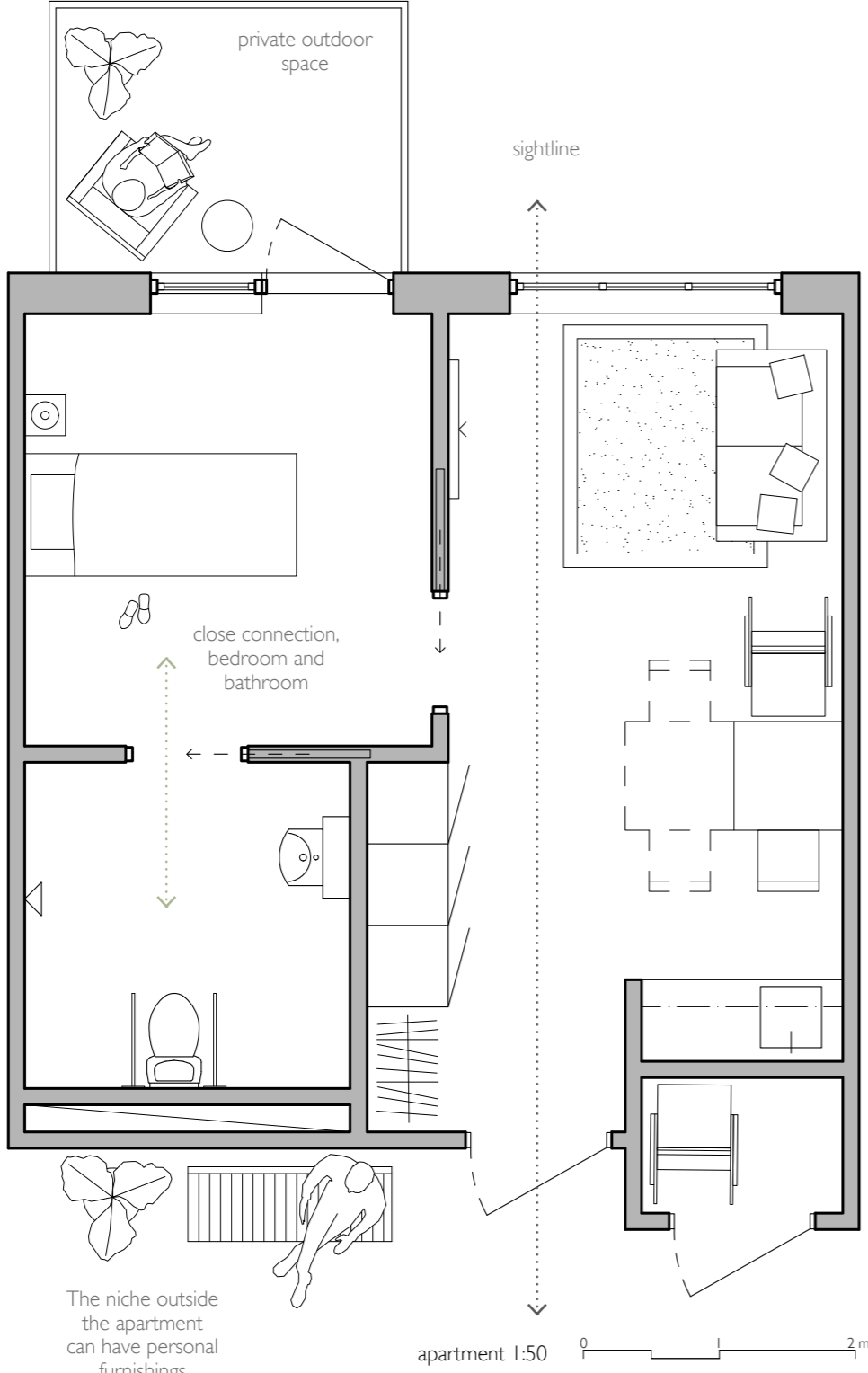
Apartments 35 m²

Defined rooms

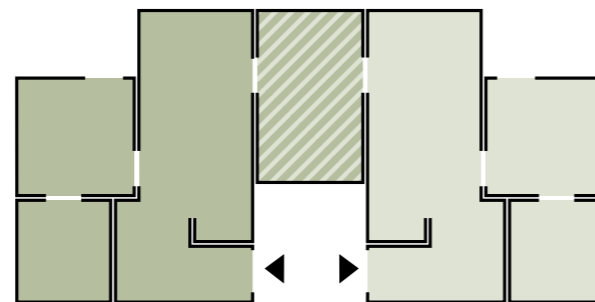
The apartments have defined rooms, despite the few square meters (35 m²). Having family or friends coming over, the bedroom door can be closed and you can prepare some simple food or have a coffee in the small livingroom / kitchen. It is a quality to have a private outdoor space, bathroom and bedroom located near each other, have a personal space outside your apartment door to furnish as you would like.



Apartment



Double apartment

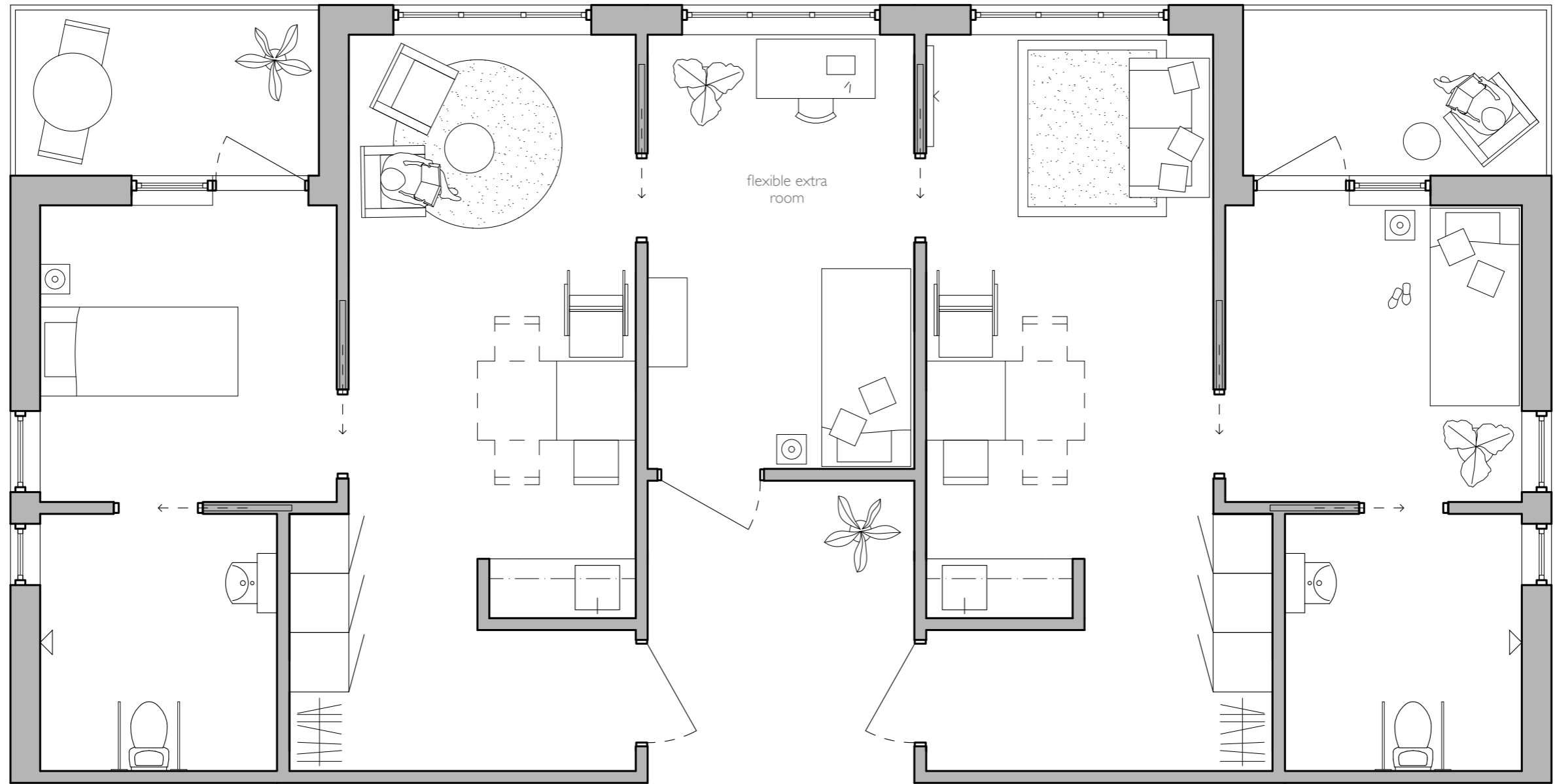


Flexible room

The double apartments are located at the ends of the building structure. The plan layout have the same qualities as the other standard apartments.

Between two apartments there is a flexible room that can be used by either of the apartments when one of them needs an extra bedroom. When there is no need of this extra room, it can be used by the unit for different purposes.

Double apartment



Double apartment, flexible additional bedroom 1:50 0 1 2m N