

I heard you can take a bubble bath with the wheel chair in the day hospice!

I think I'll stay here with mom... we need each other in this.

A peaceful home

Residential Healthcare, 2017
Therese Svensson & Amel Said
Architecture, Chalmers

An intimate palliative care hospice designed to give the guest a dignified end of life, maintaining their integrity and the closeness to their loved ones - no matter how many or in what way.

Because it's in difficult times we come together.

Assignment:
To create space for 12 very sick and/or dying guests, relieving their embodied, spiritual and emotional stress.

To create safe and easy workspace for care givers.

To create a building contributing to Gårdsten, both physically and culturally.

Course: AUT 164 - Future visions for healthcare, housing and work 1: Residential healthcare - Hospice, autumn 2017

School: Chalmers University of Technology, Architecture and Urban Design Master

Examiner: Inga Malmqvist
Tutors: Elke Miedema, Jens Axelsson and Susanne Clase

Table of content

3. Site Analysis
4. Interviews in Angered
5. Goal & Design Strategies
6. Guest Apartment
7. Program
8. Arriving to the Hospice
9. Plan Configuration
10. Letting the nature inside the building
11. Entering each facility
12. Relaxing with a view in the spa
13. In context
14. Credits



Site analysis

Gårdsten is located in the district Angered, a suburb northeast of Gothenburg city.

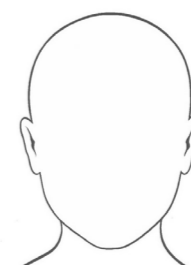
Angered is divided in small towns, rural areas and beautiful nature, 100m above sea level.

Approximately 53k people are living there with hundreds of different nationalities and cultures.

Conclusion:

A hospice located in Gårdsten will need to be adaptable to the many cultures.

The site has beautiful nature, and a view over Angered's bridge, Göta Älv and Hisingen. The nature should be displayed in the building.



Name: Mikael Johansson
 Base: Onnella finskt Äldreboende
 Position: Worker
 Age: 28

Loves to listen to music, watch movies and exercise.

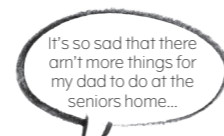
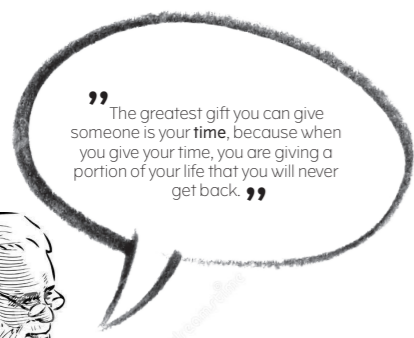
"I think many family members feel restricted in these senior homes. They wish they could do more with them. Once a Guest said "It's like dying between 4 walls" It got me sad. I believe time shouldn't be spent that way. I think a spa would be a great idea to heal with family"



Name: Samir Hassan
 Base: Lövgårdets Äldreboende
 Position: Guest
 Age: 80
 Health: Cancer
 Family: Wife passed away 2012, 5 Children, 12 Grandchildren

Loves to listen to music and spend time with family.

"I wish there was more activities I could be a part of with my family. I often feel incapable to do the activities presented. Maybe something for everyone."



Interviews in Angered

Wanting to give Gårdsten a **holistic hospice building** that facilitates more than those staying at the hospice, we interviewed staff and seniors at the senior homes around in Angered.

We simply asked about their life, what they do every day, to realize - it's almost nothing. Everyone wants more activities, especially activities that doesn't need staff - that a relative or volunteer could do with the seniors.

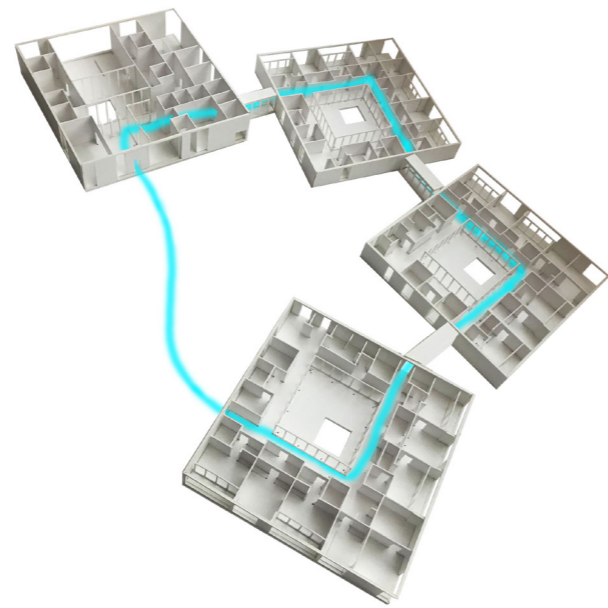
Conclusion:

Adding a "day hospice" to the hospice program, giving the building to even more people that doesn't "own" any space in society today. Wishing that it could raise the question of life being worth living every day, not just in the beginning.



Flexibility

individualism
 how to view care giving
 not losing personality when the body sickens



Bed promenade

circulation
 easier walking distances for staff



Light

shadows
 framing views
 outlooks
 inlets

Goal



The hospice should feel like a **home** not a hospital.

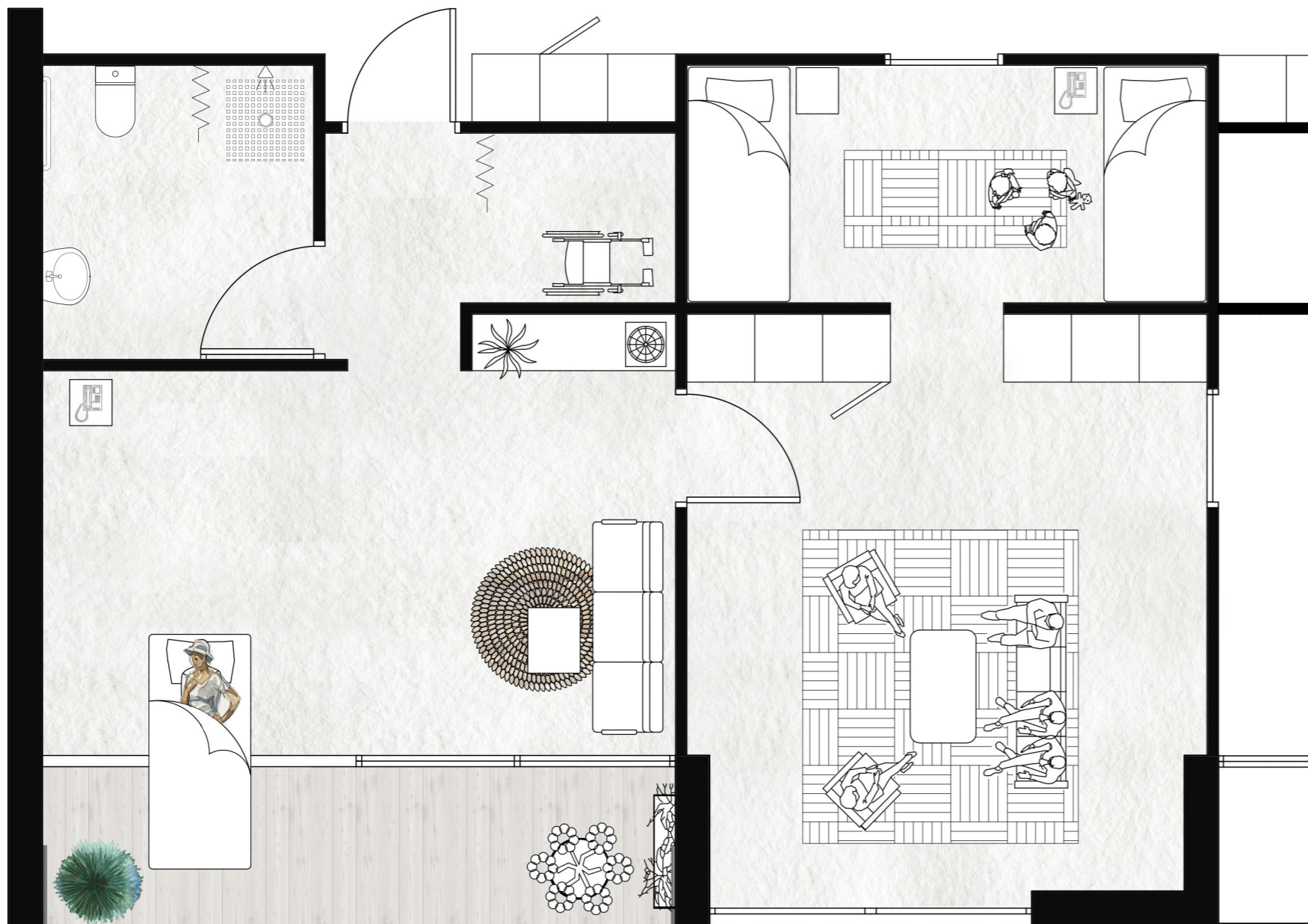
Design strategies

The hospice should not only hold space for families & loved ones to use, it should be the most used alternative. So every two guest rooms shares a **flexible family room**, which can be reached from both the common area and the two guest rooms. Adapting to different peoples different needs of space.

A **bed promenade** is the ability to get everywhere even though bound to a bed or a wheelchair. Accessible outdoor spaces a long the way, both private and semiprivate.

Using **light and nature** outlooks as part of the design. Living nature is invited in, creating a living building that changes over time.

Guest room:
32 sqm
Flexible family
room: 32 sqm



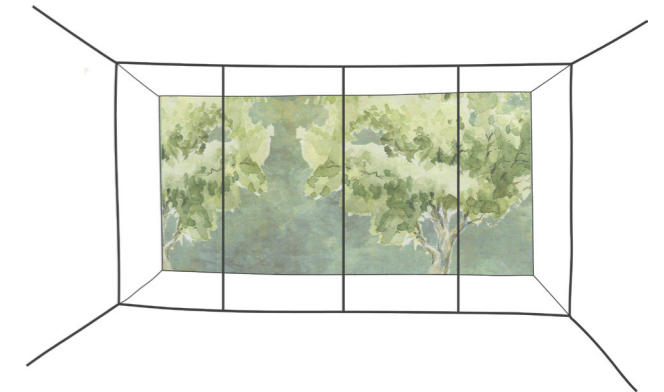
GUEST APARTMENT & FLEXIBLE FAMILY ROOM PLAN 1:50
3M

Guest apartment

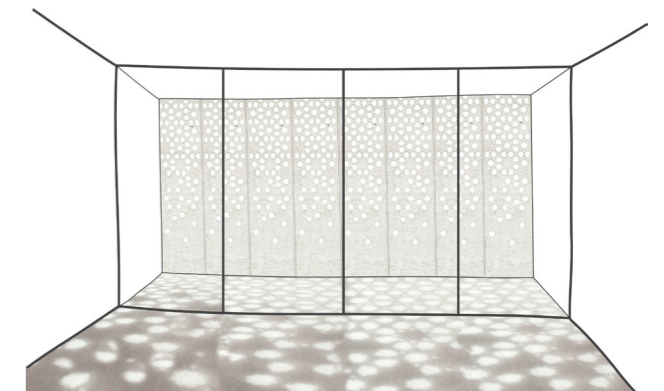
The guest apartment allows the ability to have the bed towards the glass facades sliding doors, which is a framed view over the woods.

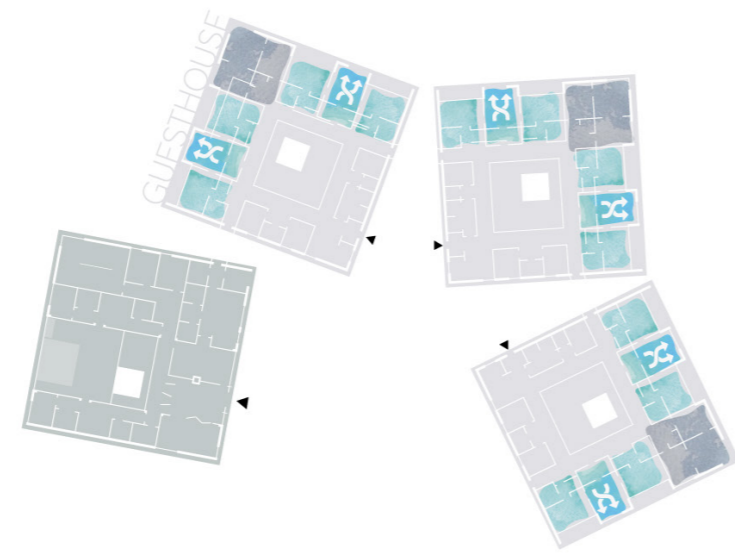
Two guest rooms share one flexible family room, which can also be further divided and used as a room for play, or private conversations - and then be bedded at night for the guest relatives.

Outside the guest room is the guests medicine storage, run by staff, and inside a larger storage for machinery and bags, and in the private area is the private storage.

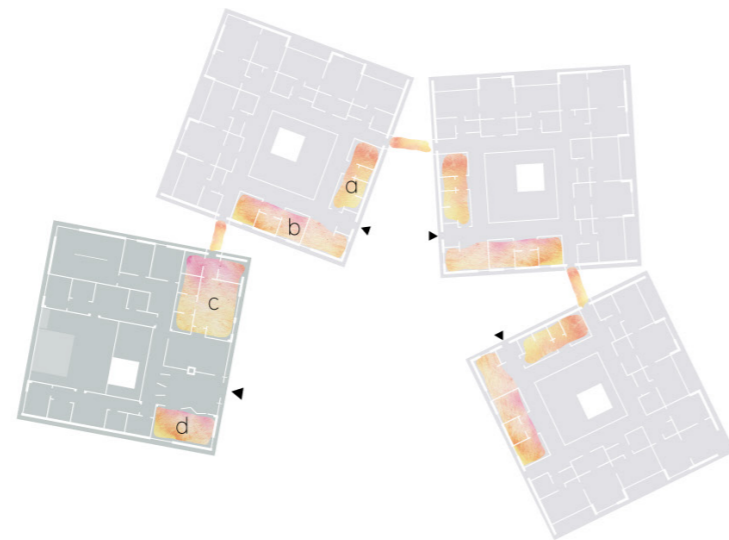


The guest manages their own shutters. They can close them mechanically from the bed at night, if feeling unsafe or if they want the moonlight to be spread around the room in the shutters pattern.

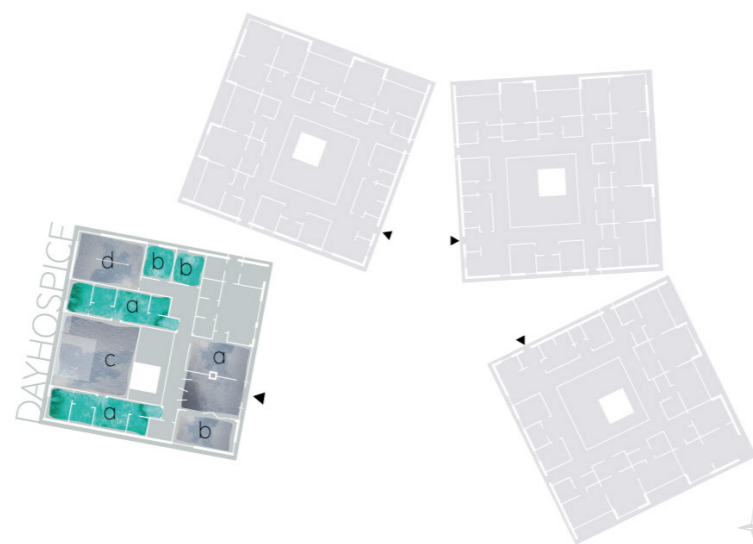




- 6 family rooms
- 12 guest rooms
- kitchen
dining room
play corner
tv-room



- laundry room
sanitary room
- conversation room
office
seating w kitchenette
- lunch room
locker rooms
rest room
garbage/storage
- conference room/team room



- living room w fireplace
art display
- workshop
- pool, private bubblebaths, relax
- gym
- locker rooms w sauna
- extra treatment rooms

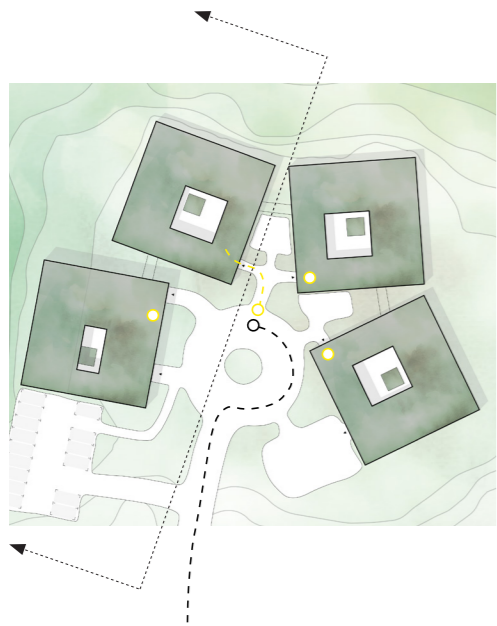
Program

The **Night Hospice** has 12 guest rooms and 6 flexible family rooms. They are divided into three separate houses also holding common space with a kitchen, dining room, tv-room & play area.

Each guest house also has their own inner courtyard with greenery and sliding glassdoors so that the guest beds can be pushed outside.

To the programme we have added a **Day Hospice**, which will hold about 15 people per day, from the seniors homes around in Angered. It is an accessible spa and common entry hall with space for workshops and art exhibitions.

Staff will primarily be working in the guest houses where they have an office and a storage. A semi private seating area with a small kitchenette where they can easily see all the guestrooms and the common areas. Each guest house also holds a laundry room and a conversation room also accessible for guests and guest relatives.



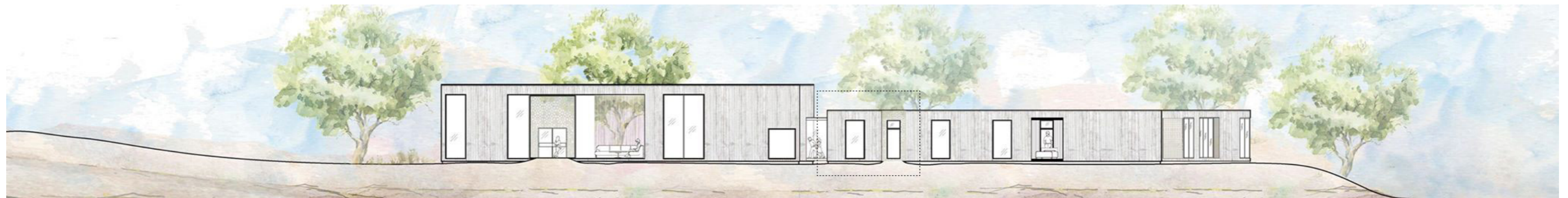
...arriving to the hospice...

All staff seating and office work areas are located towards the courtyard and anyone arriving will easily be seen. If it is the first arrival to the hospice facility, staff will meet the arriving at the courtyard.

The main entrance to the Day Hospice is the only one facing the courtyard, making the guest houses more private even though people visit the Day Hospice.



SLICE OF FACADE (Arriving at night) 1:50



ENTRY HALL DAY HOSPICE STAFF CIVILIAN AREA STAFF WORK AREA GUEST & RELATIVE ROOMS

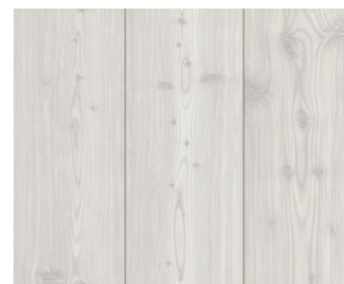
ENTRY FACADE 1:300



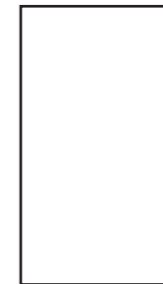
...materiality...



Shutters of white tin are also used as light fixtures around entrances.



Facades of spruce, impregnated with a natural wood protection, Sioo. It hardens and whitens the wood over time.



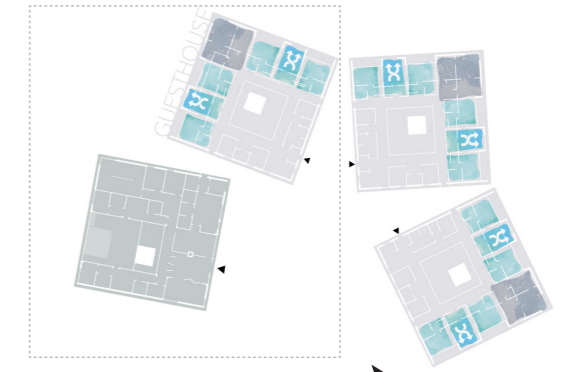
Black tin frameworks, framing the view out the windows.



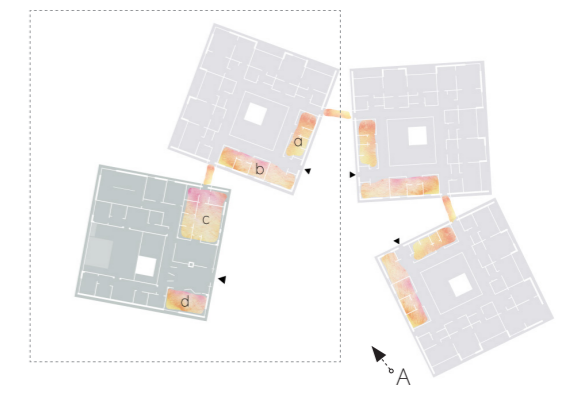
1 guest house: 500sqm
Day Spa: 550sqm

Plan configuration

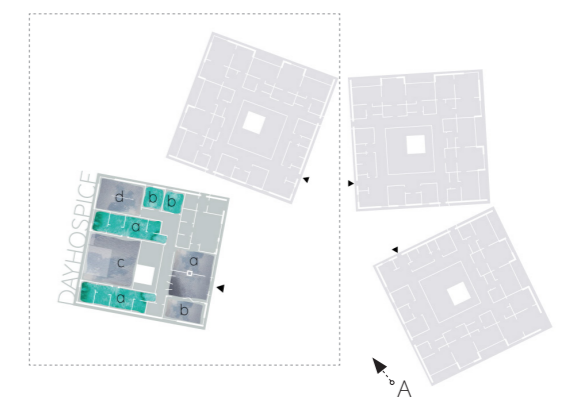
Guests and their relatives, private area.



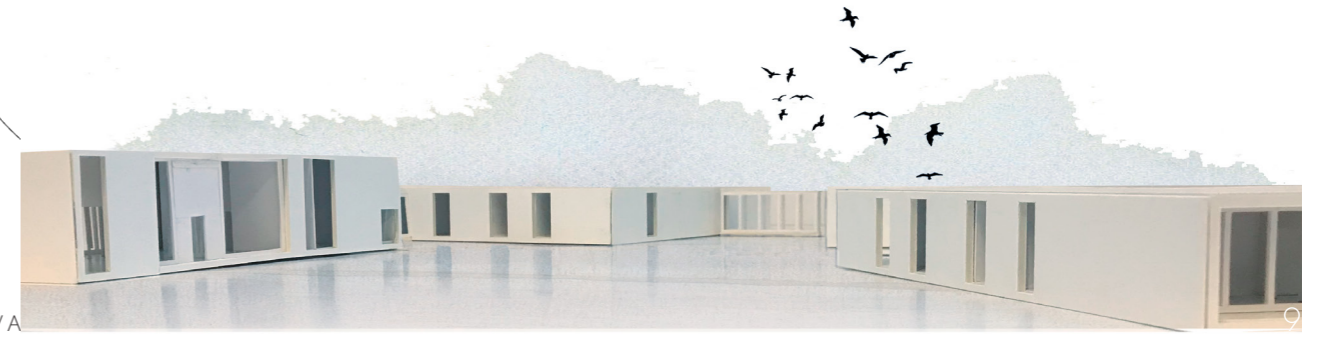
Staff, with shortcuts between the guest houses.



Day Hospice guests, common and more private area.



The night hospice has **three guest houses** which are all the same, but are rotated away from the courtyard. This gives all the guest apartments privacy, with no one walking in front of their window.



...letting nature inside
the building...

The building is flowing between inside and outside space, with a **scale of privacy**. It is more public in the courtyard and then gradients towards becoming more private in the outsidies, passing the semiprivate inner courtyard, making sure everyone finds space to match their mood every day.

Water is collected on the buildings green roofs and is drained in the inner courtyards via water chains, giving the greenery extra water and a scenery while raining.

The light will dance across the guest rooms if you choose to close the shutters, and these qualities will let the wheather outside be present inside aswell.



SLICE OF SECTION 1:50



SPA ENTRY HALL STAFF GUEST & RELATIVE

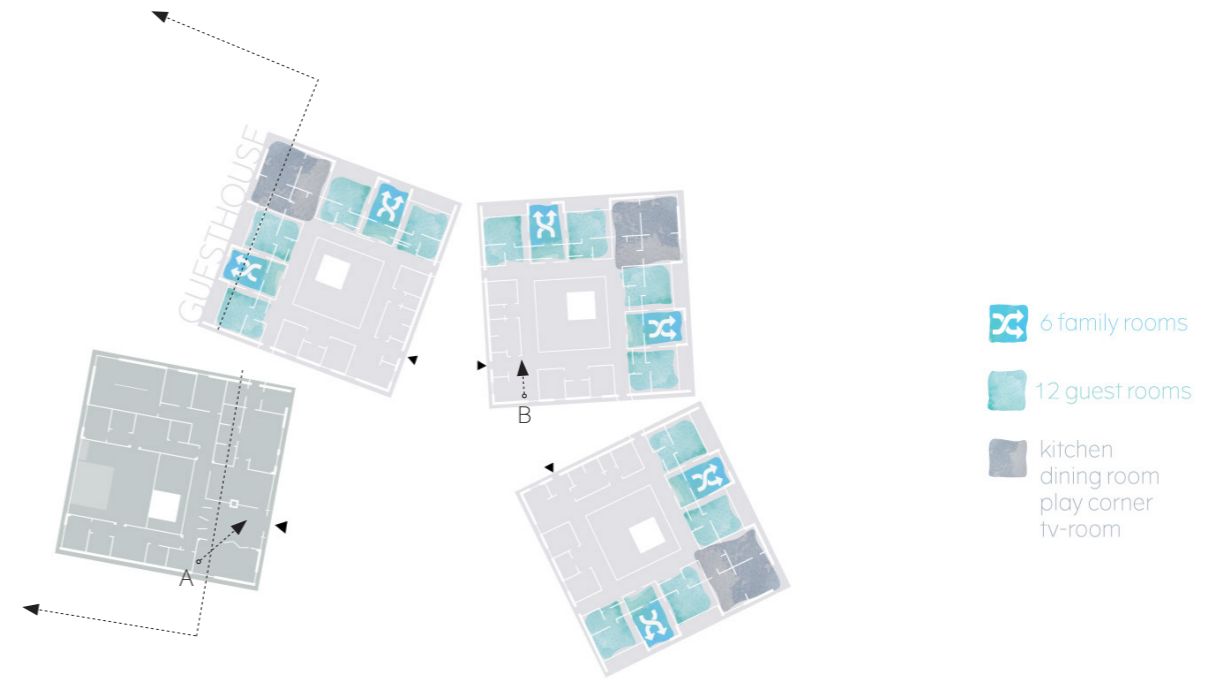
COURTYARDS SECTION 1:300
10M

...entering a Guest House...

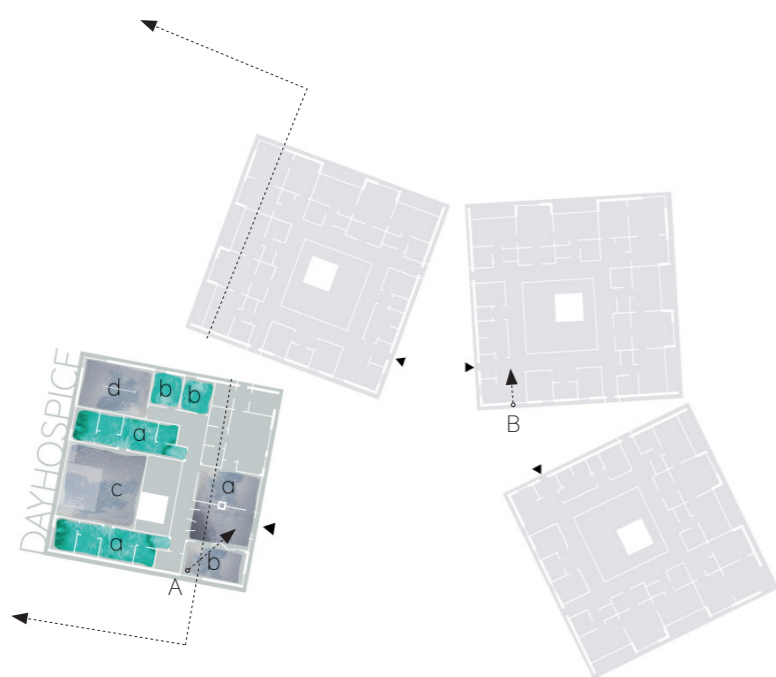
The guest house lay-out is inspired by the lay-out of a home. As you walk through the door you can't see into the house until you have passed the hallway. Only hinting the light from the inner courtyard, and as you pass the corner you will get a sightline across the inner courtyard, all the way to the common area of the guest house. This makes the guest house private and personal.



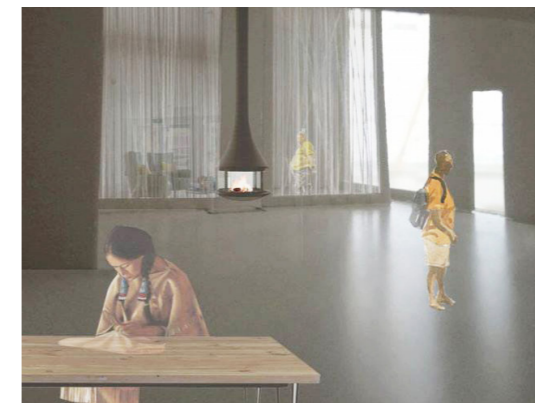
VIEW A



ENTRY HALL SECTION 1:300
10M



- a living room w fireplace art display
- b workshop
- c pool, private bubblebaths, relax
- d gym
- a locker rooms w sauna
- b extra treatment rooms



VIEW B

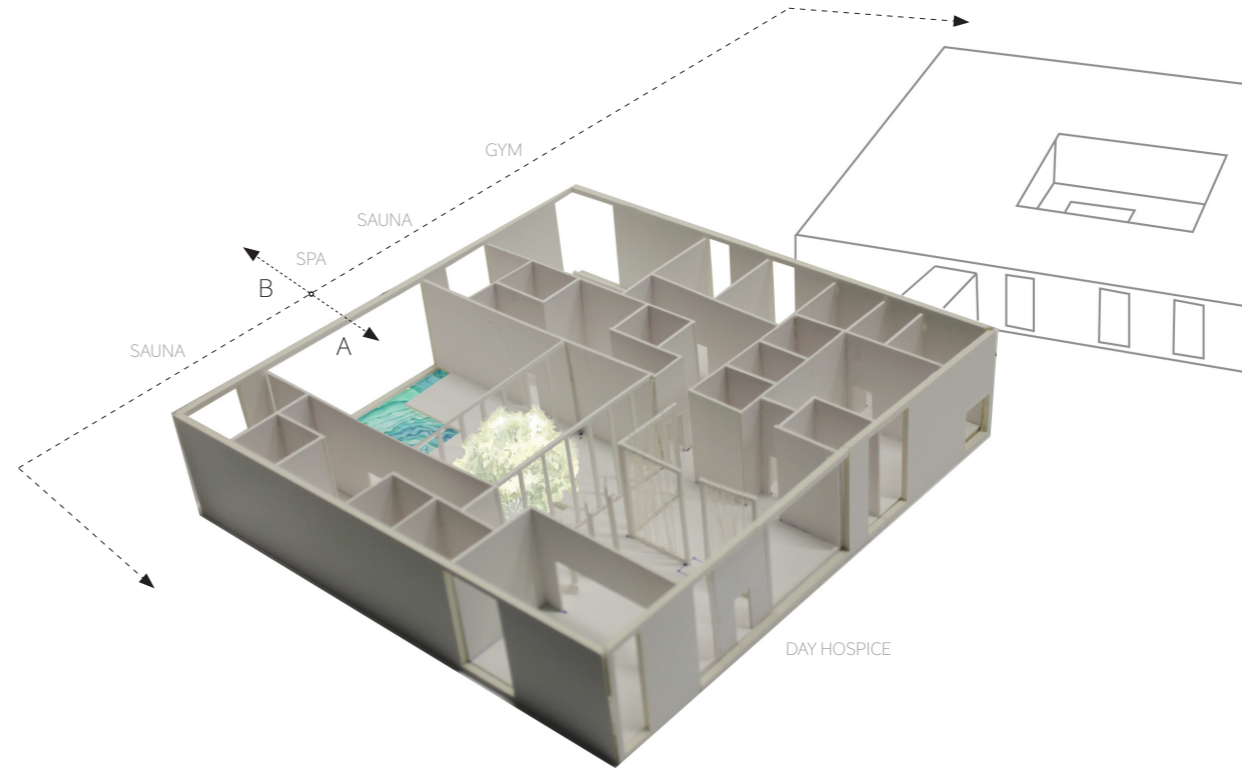
...entering the Day Hospice...

As you enter the Day Hospice it's a large open space, with semi see-through rope walls and a fire place to the right where you can sit. A workshop area with a folding wall to the right, making it flexible to grow out into the entry hall. In front of you there are rotating walls where artists can exhibit for a period of time and then be exchanged. All these elements makes you hint the spa and relaxation area on the other side of the glassed inner courtyard without exploiting those who are spaing.

...relax with a view in the spa...

The guests and relatives of the Night Hospice are of course welcome to use the Day Hospice and spa facility, together with seniors. The spa is fully accessible which raises their self worth by having an activity that doesn't need that much help doing. It is also important for the Night Hospice guests to have the ability to go somewhere and clean themselves, and not constantly need help.

The gym can be used for rehabilitation of people who have been spending a long time in a hospital, or a relative who is living in the Night Hospice and doesn't want to lose their everyday life.



ENTRY HALL SECTION 1:300
10M



VIEW A



VIEW B

The spa has a relaxing area, where you can also change from your wheelchair to a water wheelchair. There are bubblebaths that are private, with an elevating floor they can steer themselves.



SITE PLAN 1:500
 30M

In context



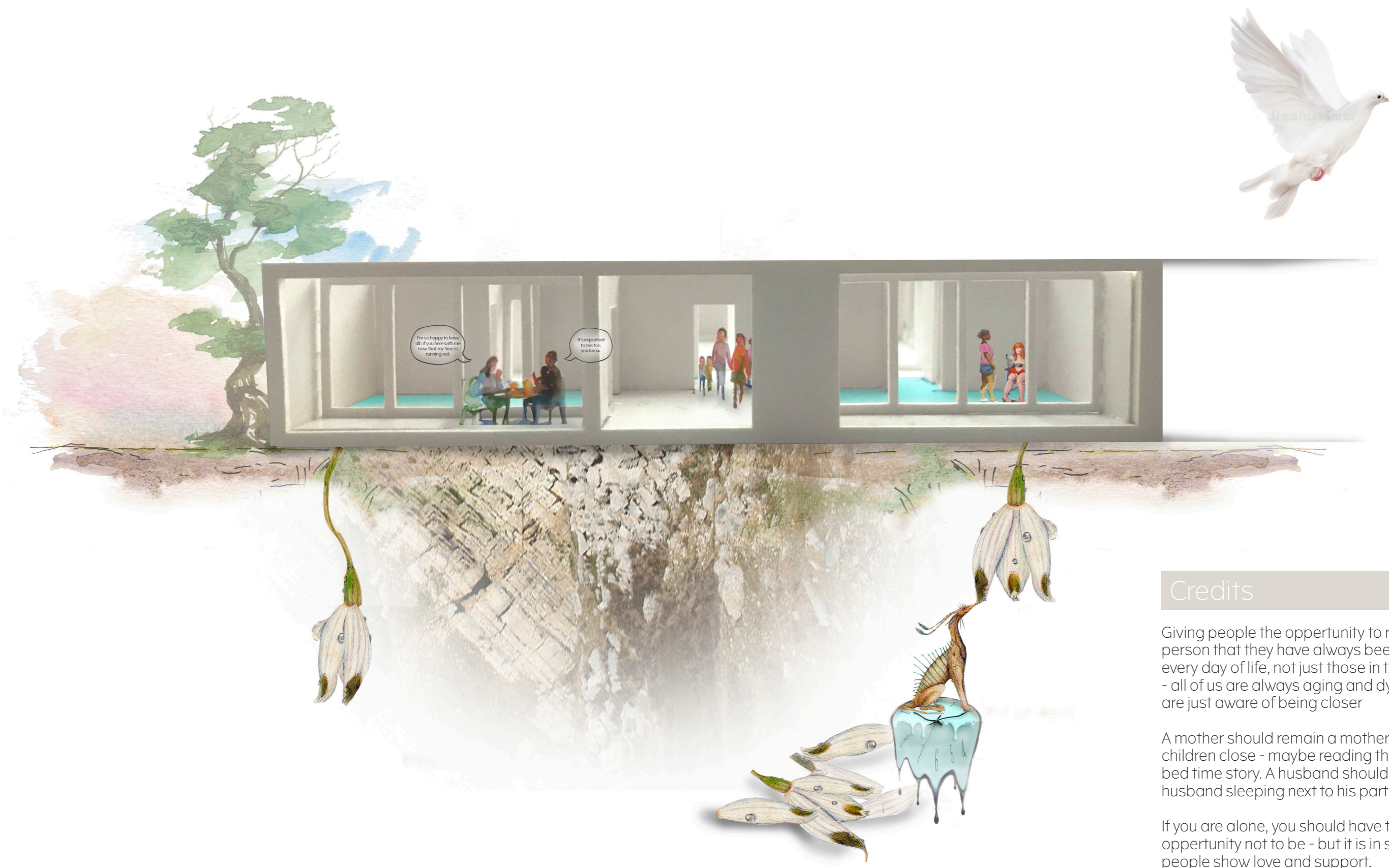
Getting to the hospice you drive through the newly built villa area which you enter from Gårdstenvägen.

A pathway from the busstop passes the building, making it feel safer and more enlightened.

The courtyard has its **circulation** for drop-offs and pick-ups, and parking space on the side.

As you follow the buildings inner **circulation** it's continued to the outside crossing a playground, courtyard and the main entrance. In contact with every guest house entry there is accessible outdoor space with **barbeque and seating areas**.

The envisioned buildings north of the hospice will not compromise on its privacy, neither would continuing the villas along the road to the hospice. As it will be a blind alley.



I'm so happy to have all of you here with me now that my time is running out.

It's important to me too, you know.

Credits

Giving people the opportunity to remain the person that they have always been, valuing every day of life, not just those in the beginning - all of us are always aging and dying. Some are just aware of being closer

A mother should remain a mother, having her children close - maybe reading them a short bed time story. A husband should remain a husband sleeping next to his partner.

If you are alone, you should have the opportunity not to be - but it is in sorrow people show love and support.

A peaceful home.