

Housing for active seniors

*-that enjoys a rich social life.
This is a building that interact with the
cityscape it is situated in.*

by Tung Phan & My Lindqvist



The Site- Today

Along the east side of the site stretches Gibraltargatan and on the west Chalmers University is located. The site is a city space situated only 2,5 kilometres south of the city centre of Göteborg.

There are many small lunch restaurants, delis and a bunch of hairdressers along Gibraltargatan. Around the site you'll find residential areas, some buildings and districts with a certain cultural heritage and south of the site there is a bigger recreational area. Most characteristic is the meeting between Chalmers University and the city.



The Site- Future

The site will in the future strengthen the connection between Chalmers campus and the residential areas in the neighbourhood.

This proposal suggest adding more residential buildings with public spaces on the ground floors along Gibraltavallsgatan. This will strengthen the connection between the two streets Gibraltavallsgatan and Gibraltargatan.

To create an active space around the senior building, a kindergarten is placed next to it and on the south side there are also a shallow pond (plaskdamm) and a playground since there is a lack of this type of space in the nearby area. This will also activate the green area around Gibraltar Herrgård.

In connection to the senior housing there will also be a lunch restaurant facing Gibraltargatan that can be used both by the senior residents and the public.

Senior housing



Suggested new buildings



Chalmers library



Kindergarten



Cultural heritage



Movement paths





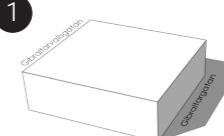
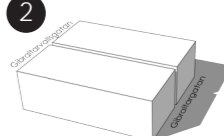

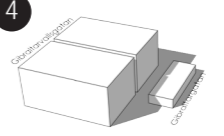
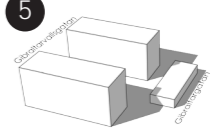
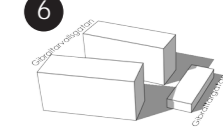
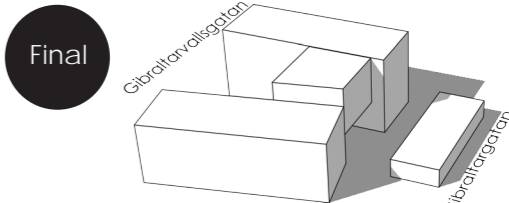
This is a senior housing for persons over 75 years of age. It consists of 50 apartments with additional spaces for common and public use.

The housing consists of three volumes with an inner glazed courtyard. The north volume is five storey high, the south volume is four storey high and the east volume is a one storey high restaurant.

The main entrance is situated in the southwest corner facing the calmer street Gibraltarvallsgatan. The building have smaller entrances in the cardinal directions: south, north and east.

The inner courtyard opens up with a glazed wall towards southwest and embraces the light with a glass roof that extends over the south building body and creates a semi-outdoor space on the roof top.

Process of creating the shape of the building

- 1  What it looks like if we use the whole site.
 - 2  Cut through the site to make a connection to the streets.
 - 3  Cut off and lower a part to maintain the wide scale of Gibraltarargatan.
 - 4  Leave room for an outdoor place in the sun and keep the row of trees.
 - 5  Create a courtyard.
 - 6  Rotate the south building to let more light in.
- Final**  Lower the southern volume for more light and add a connection between the buildings.

The courtyard is a temperature controlled room with tropical plants. During the days it is open for the public but closes during the nights. Here students from Chalmers can escape to study or take part in the boule tournament that is arranged by the residents. Every now and then there is a movie screening on the big glazed wall or you can come and leave an old book and grab a new in the "Grab one leave one" -library.



The Lobby is located close to the parking lots so that it's not far to walk to the taxi.

The host office is where the host of the building works and the office is located in connection with the lobby so that both visitors and residents can easily get in touch with.

The shared studio is a space that is used both by the kindergarten, the residents and also rented out for evening courses in upholstering old furniture or drawing.

The multifunctional hall is connected to the café and can be used by the residents, Chalmers or other organisations for hosting parties, lectures and movie screenings.

The restaurant is facing Gibraltargatan and is a lunch restaurant open for both residents and public. It complements the existing restaurants along the street by its slightly bigger scale.

The staff room is the room for the homecare personnel working in the building and in the neighbourhood. It consists of a combined lunchroom and meeting room, a small office and changing room with lockers.

The guest apartments are available to rent for friends and family of the residents.





Floor plan level 1
1:250



- 1-room apartment
47,5 sqm
- 3-room apartment
66,8 sqm
- 3-room apartment
67,5 sqm
- 4-room apartment
68,5 sqm
- 4-room apartment
78,5 sqm
- Vertical
communication
- Storage

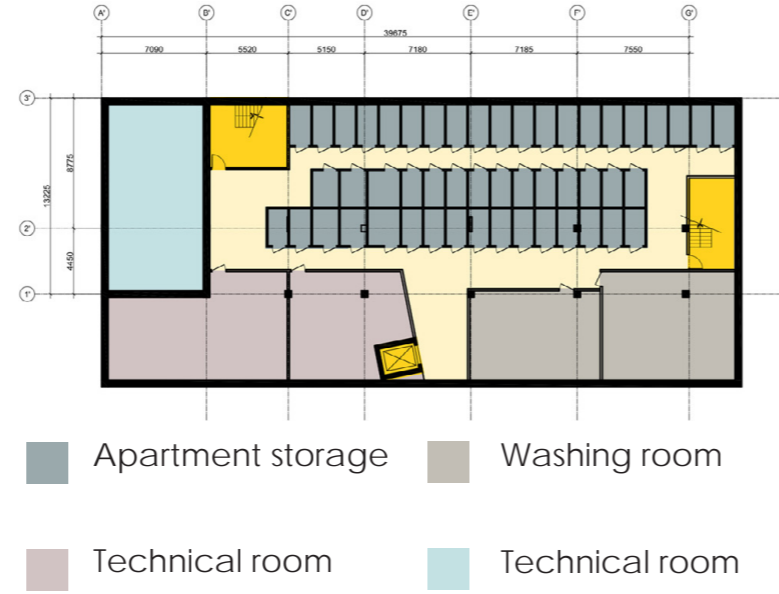
The horizontal communication between the two building volumes is possible through pathways crossing the courtyard. Along these pathways it is possible to sit down. They change place on each floor to enable the interaction between the floors.

The vertical communication is possible through the two staircases in both of the building volumes. You can also move vertical with the two escalators, one that is connected to the south staircase and one that is situated in the courtyard. On the east side there are two additional staircases for fire escape only.

Floor plan level 2
1:500



Basement
1:500



Floor plan level 3
1:500



Floor plan level 5
1:500



Public vs. private - The apartment floors are not accessible for the public. As a resident it's easy to be a part of the social courtyard on your own premises. One can follow what is happening there from their floor or go down and interact with the visitors.

By letting the courtyard be a public space the distance between the private and the sense of belonging (that is achieved by interaction with other humans) will be shorter but still a choice of your own.

Floor plan level 4
1:250



The rooftop is situated on the south building and is closed off from the temperature controlled courtyard through a glazed wall. It consists of two types of spaces, one totally open space for sun endorsement and gardening and one semi-open space.

The semi-open space consists of smaller units for different activities like ping-pong, yoga/ meditation, sauna and a hot tub. The glass roof that also covers the courtyard extends over this part of the rooftop.

The sauna is bookable for both residents and people in the neighbourhood as long as you are a member of the sauna-community.



Section A

1:200

On the second to the fifth floor there is an additional volume between the north and the south building. It consists of apartments besides on fourth floor where it also contains the common room.

The common room is the only common space in the building that is for residents only. It has a kitchen and seating for 30 persons and a lounge area with tv. Here you can invite friends and family to celebrate all good things in life.



Section B

1:200

The structure is a reinforced concrete column and beam structure.

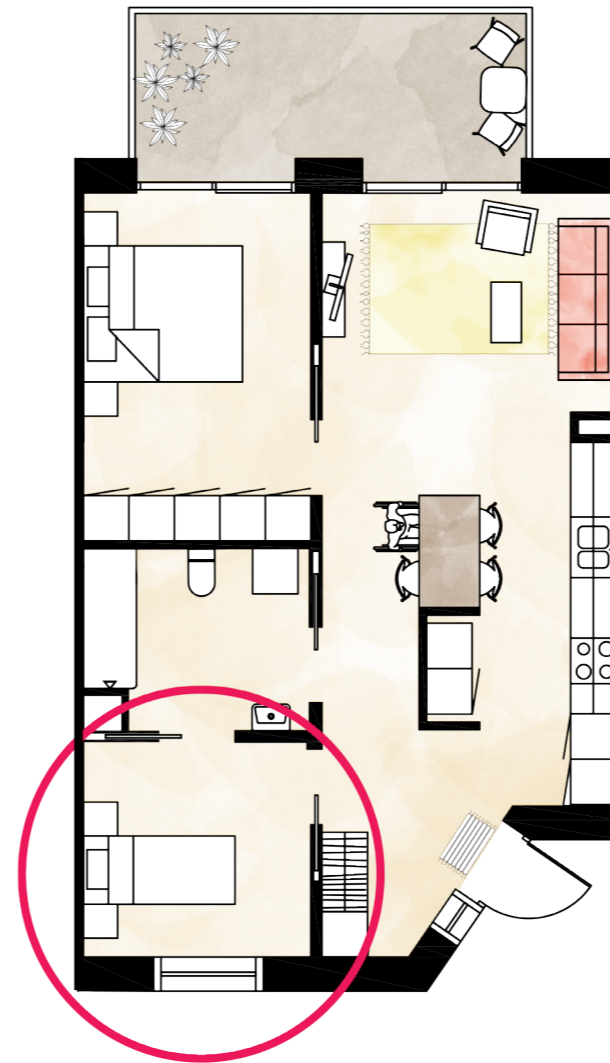


3-room apartment 1:50

66,8 sqm



3-room apartment 1:100



The 3-room and 4-room apartments are designed for a flexible use. If one person in a couple gets sick it is possible to use the study space as a one person bedroom. The room has easy access to the bathroom and is close to the entrance which makes it easy for healthcare personnel to access the room without interfering too much with the other resident's private space.

This layout also enables the room to easily be rented out or if the function of the building sometimes changes it can be used as an apartment for everyone or a student apartment.



View from the kitchen looking at the dining table and the living room. The wooden frames around the windows can easy be personalized by painting.

1-room apartment 1:50
47,5 sqm



In the layout of the 1-room apartment the bathroom and kitchen divides the space in one more private that contains the bedroom and livingroom and one more public diningroom. The bedroom can easily be closed of with a curtain .



View from the living room looking at the bedroom and entrance door.



View from the corridor looking towards the apartments entrances.

East Facade 1:200

Roof: There are two types of roof, the normal concrete one and a glazed one. The glazing roof is consisted of framed sheets of glass put together and supported by round steel columns and beams. The shape of the structure is inspired by tree trunk and branches.

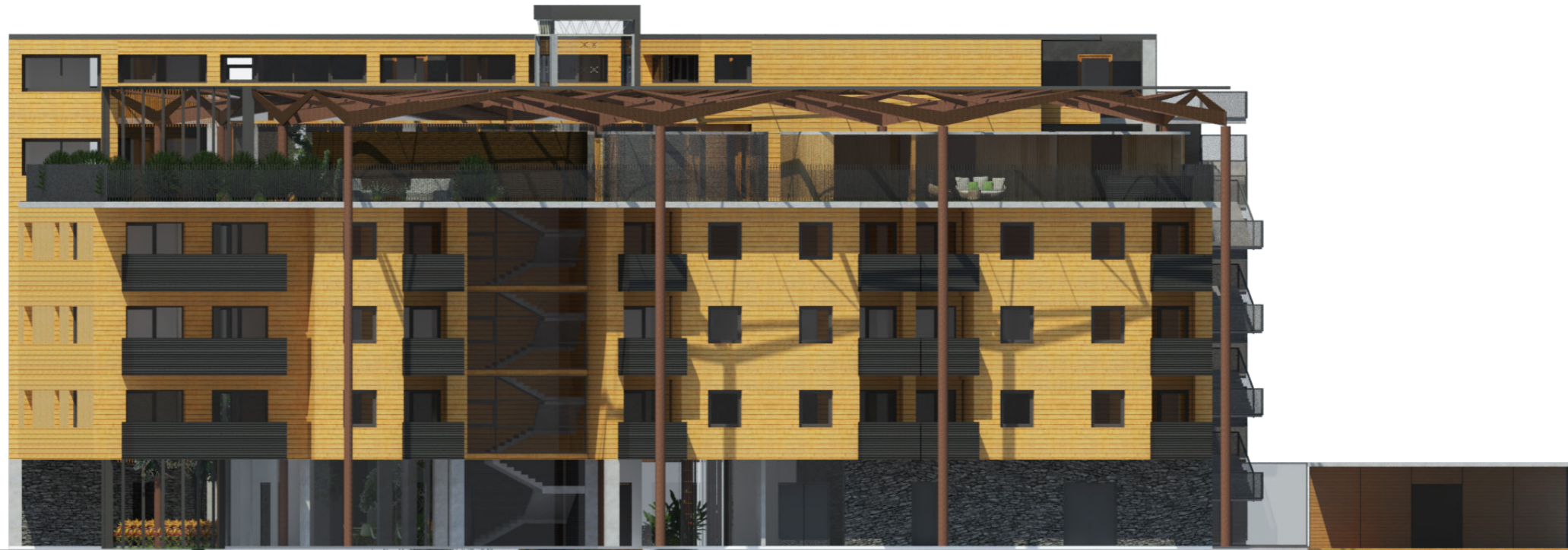


West Facade 1:200



South Facade 1:200

Facades: The building is clad with a combination of oak colored, smooth finished wood and a more rustic dark grey one. In order to create a contrast on the facades. Ground floor is differentiated from the other floors by the mixture of gravel stone cladding and frameless glazing.



North Facade 1:200



