

Surrounded by nature

- A dementia village in Anneberg, Kungsbacka

Edvin Edström
Hanna Johansson
Ziyan Cai



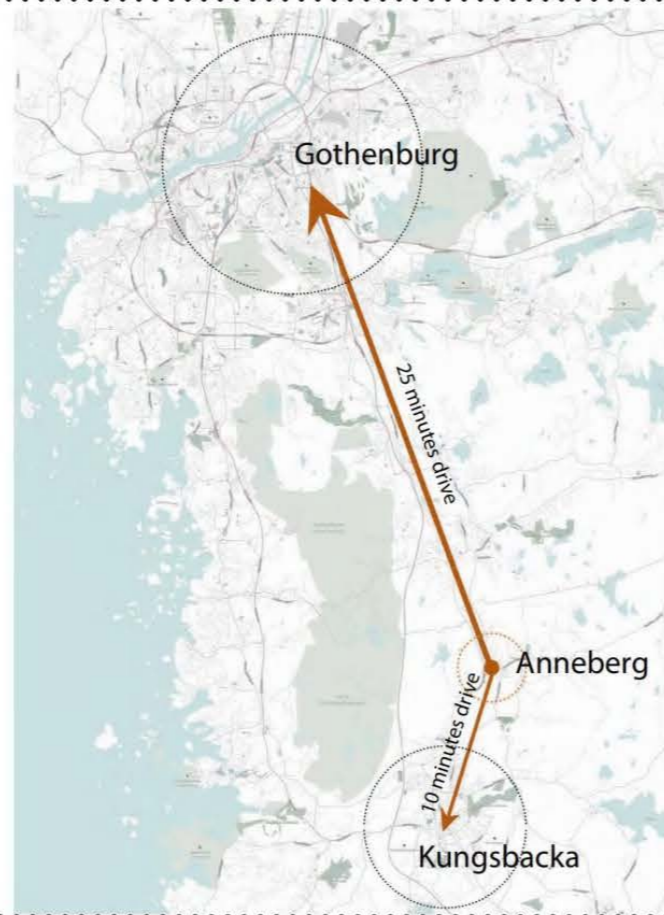
SITE ANALYSIS

Site

The site is located in Anneberg, which is a small community north of Kungsbacka and south of Gothenburg. The area is located on a piece of farm land along Kungsbacka-creek where the municipality is planning on building a new district.

Within this new district, it is planned to build an assisted living facility combined with a kindergarten and the original place for this building is in the south-east of the site dividing the new neighbourhood from the creek. The recommended size for this is 12 000sqm according to the detail plan for the area.

This project is situated on the original place of the assisted living facility and kindergarten and will have a great importance of the connection to the greenery in the east. It will be clearly exposed to the road and parking spaces in the south and protected by newly built row houses in the north. The building will also connect to a public park/playground and plaza to the west.



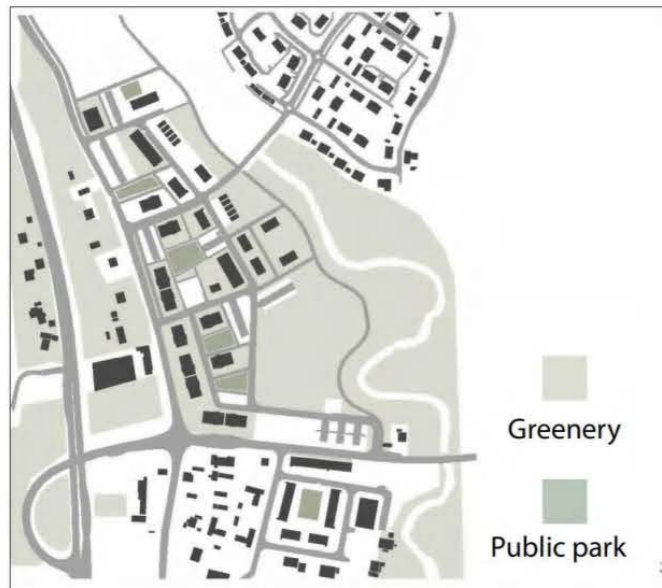
New neighborhood

A big development is taking place around our site in Anneberg. 400 new homes, 2600 sqm of public functions in addition to meeting- and recreational space is being planned for. Buildings of a never before seen scale in Anneberg, up to five stories, are supposed to be built in conjunction with smaller scale row houses. What all these new developments have in common is their inspiration from the Swedish farmhouse. Traditional red, mustard and grey painted wood is planned to be used throughout the area as a tribute to the barns that stood in Anneberg during the lands historical use for farming.

With this new development the inhabitants of Anneberg will be getting a town center, complete with some public functions such as a cafe and hairdresser. These will be situated around a new plaza which will be a natural meeting place in the future with space for a local market, food trucks or the library bus.

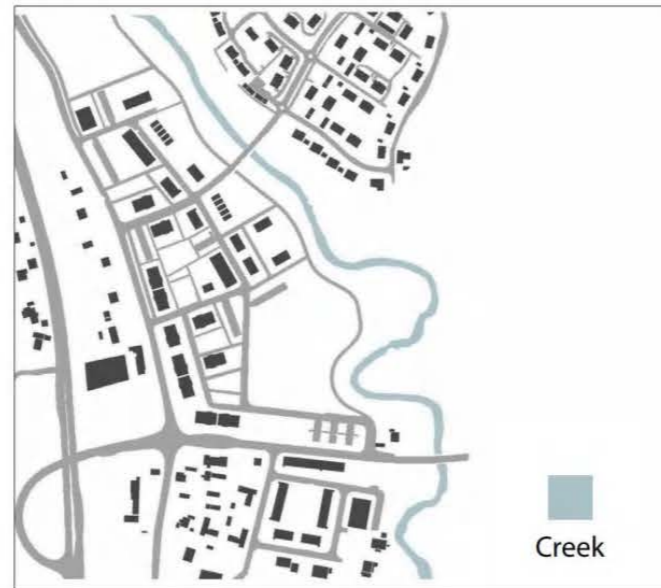


Greenery



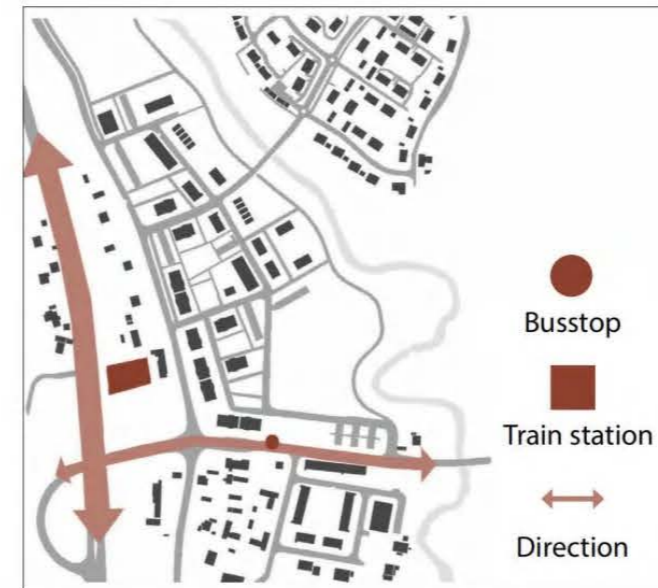
The building site for the project is situated on a piece of old farmland. It has been left unused for a while and contains no protected species or plants. Although unused the new development will remove much of this green area and therefore the greenery by the creek will be of more importance.

Water



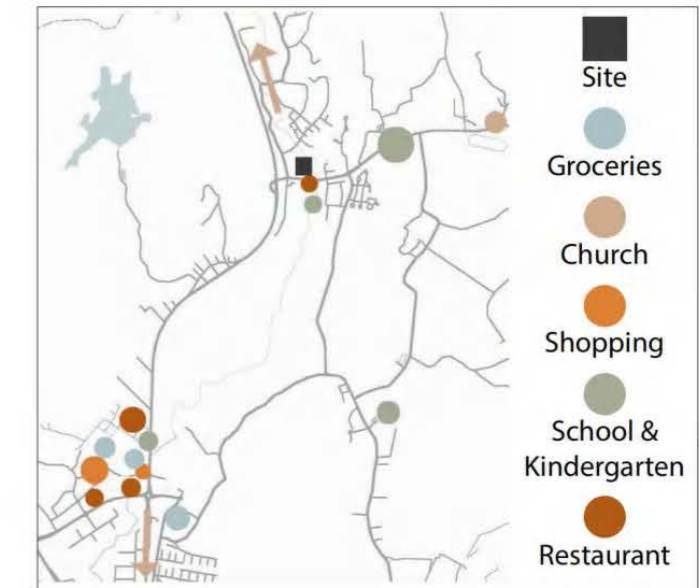
Kungsbacka creek is running to the east side of the project site and is of high recreational value. It is home to some red-listed marine species and is surrounded by a green zone containing lots of trees and bushes. This zone is close to our project site and it will be important to make use of its quality.

Connection / Distance



Göteborgsvägen runs to the west of the site and connects Anneberg to Kungsbacka as well as E20 highway to Gothenburg. There is also a railway and station close to the site which connects you to both Kungsbacka and Gothenburg. A larger street passes the site to the south and functions as the main road to most of the houses in Anneberg.

Functions



There are currently not many public functions other than a pizzeria and a school with kindergarten in close proximity to the site. A couple of minutes walk to the east you find a church. More functions; such as shopping, restaurants etc. can be found a couple of minutes drive to the south to Hede.

DEMENTIA VILLAGE

BUILDING CONCEPT

Explanation

Dementia is a general term for loss of memory, language, problem-solving and other thinking abilities that are severe enough to interfere with daily life. A dementia village is a new concept in Sweden. There are multiple international examples of this type of housing, De Hogeweyk in the Netherlands is one such example as seen in the picture below.

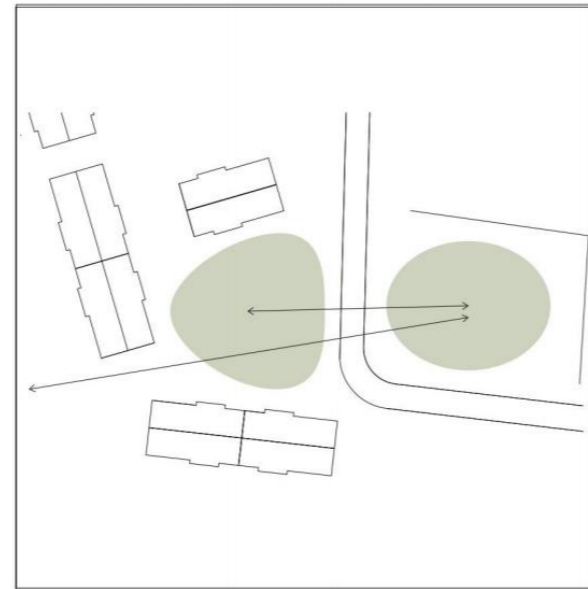
The main goal of this type of care is to make life more natural and normal for the tenants. They can move around freely, visit shops, grab a coffee at a cafe etc. Caretakers and doctors are dressed in regular everyday clothing and participate in a lot of activities together with the tenants. In international examples there are reports of tenants seeing the staff more as friends and acquaintances than employees taking care of them.



Project

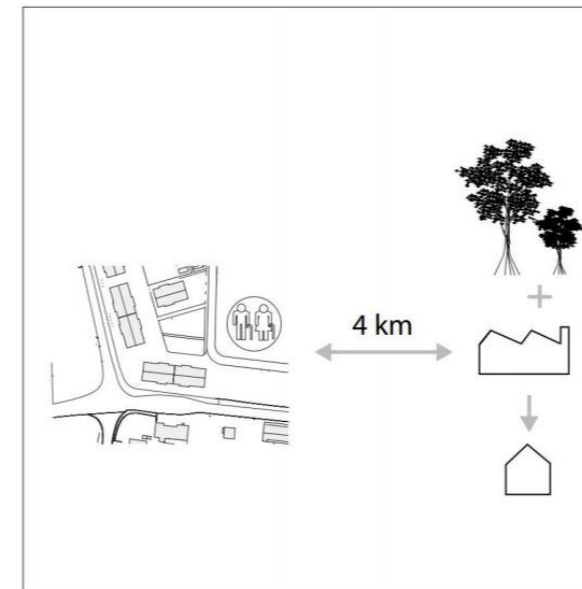
This project has been designed with the help of the concept dementia village. The first parts of the instructions have been to draw a village containing at least 80 apartments in 8-10 units. It should contain an entrance area, units, staff area, administration area, a kitchen and different support functions like delivery, waste and technical rooms. It is also important to have a functional outdoor area for the residents. The second part of the instructions stated that additional functions are possible to add and are to be chosen by ourselves. The instructions also made it optional to include the kindergarten or not. In this project the kindergarten is included and some functions like kitchen, deliveries and technical equipment are shared between the two facilities.

Connection



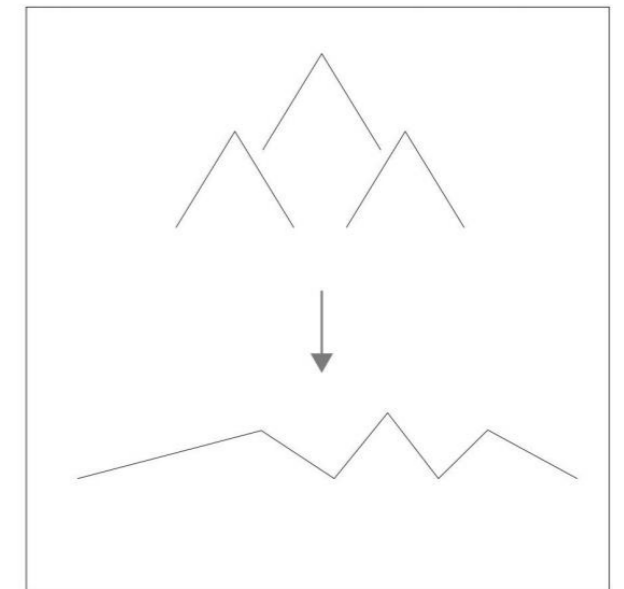
The building should keep a strong connection between the new plaza by the train station and the main entrance to the village. The area in between these can create a new public square which is welcoming and embracing. To further enhance the connection, sightlines should be kept unobstructed.

Local material



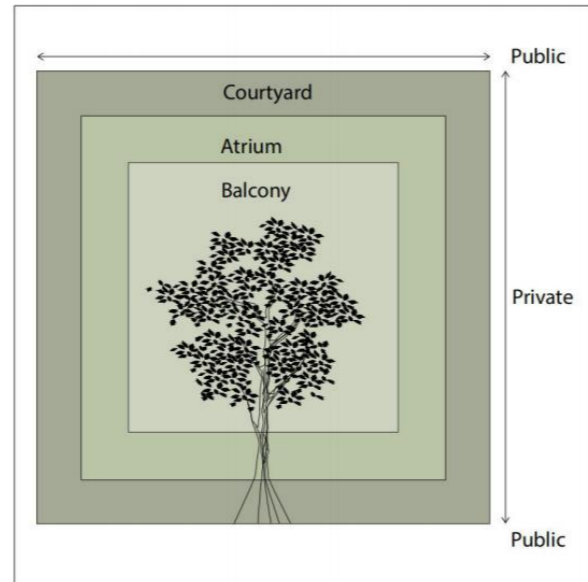
A wooden factory specialized on taller buildings (especially apartment buildings) in wood is located about 4 kilometres from the project site in Anneberg. Using local materials like wood will have a lower impact on the environment and will also support the local economy.

Gable roofs and scale



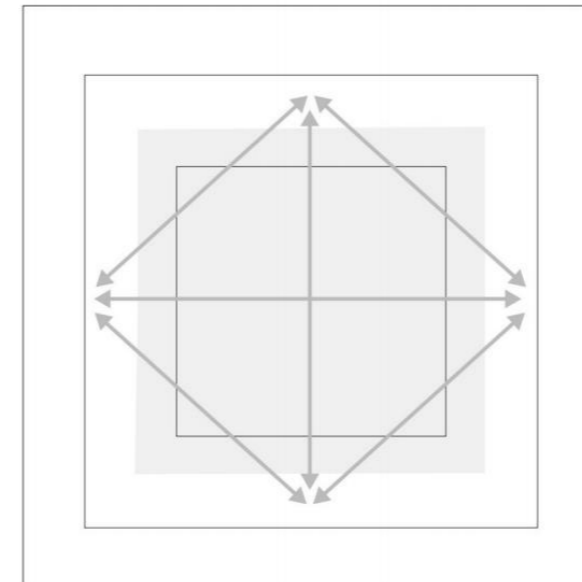
The surrounding buildings (both new and old) are built with gable roofs. To connect the building to the site but also break down the scale of the building, this concept is meant to use the gable roof as a model, add them together and create a new form of roof used in the project.

Greenery



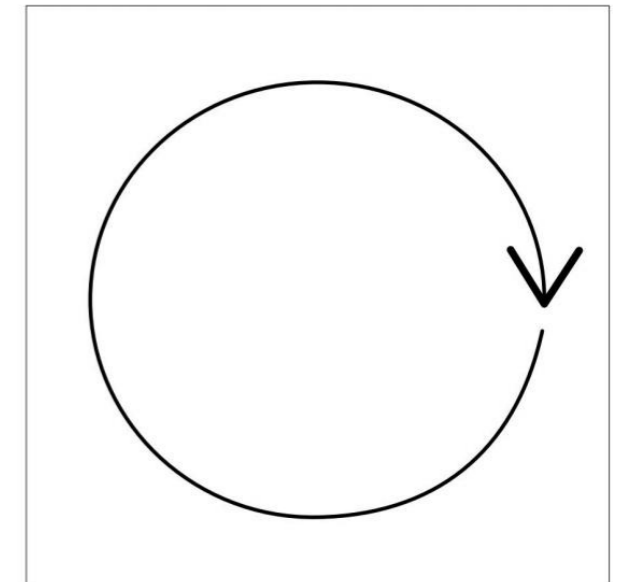
The project will provide the residents and staff with greenery in three different ways. The most private experience will be from the apartments balconies- every apartment has its own balcony facing the greenery outside. The building will also provide the residents with semi-public atriums connected to one or more units and a public courtyard meant for everyone.

Sightlines



In order to amplify the feeling of security for the residents and also to enhance the working environment for the staff, it's important to allow great overview with sightlines, especially within the units. It's important not to block the view to and from entrances to apartments as well as keeping clear views to important functions.

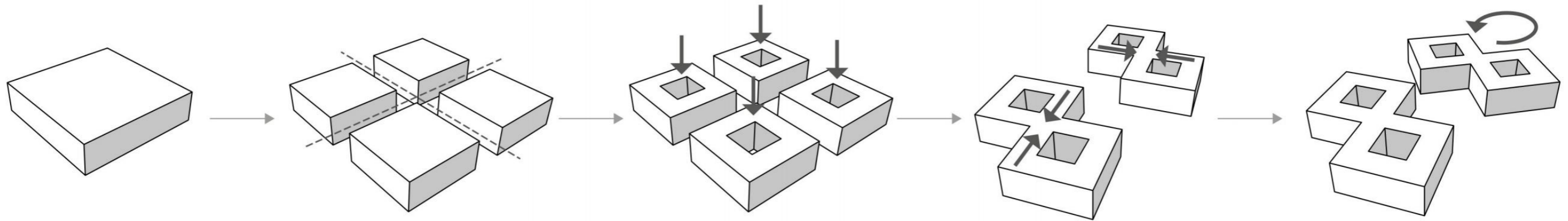
Circulation



Circulation within the building will higher the orientability for both staff and residents especially in the units and courtyard. The use of circulation and the prevention of dead end corridors will help the residents to find their way back to where they started. It will also facilitate finding their way to common spaces like kitchen, living room area, and their own apartments.

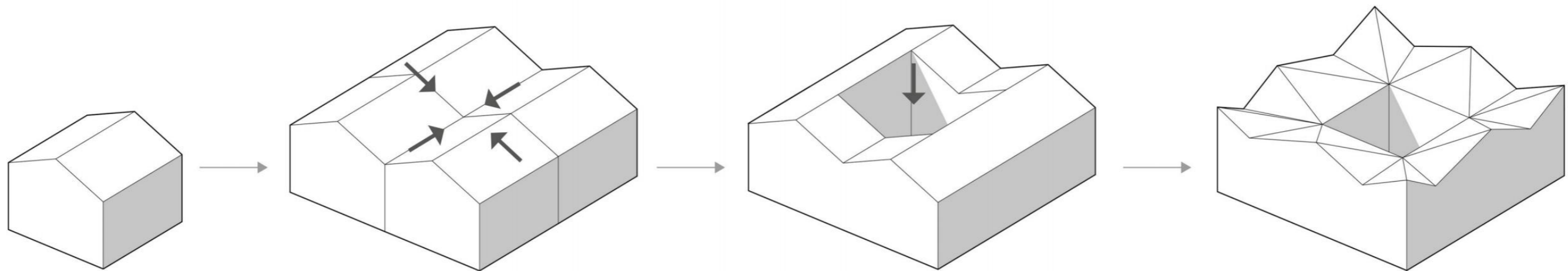
CONCEPT SKETCH

Form



To create the shape and form of the building, it all started with a box. It was then divided into four equally sized pieces to not make the building look and feel too massive. An atrium was created to let in more light and incorporate more greenery. To create a better floor plan and layout the pieces were added together two and two. The north building was later rotated to fit in the site.

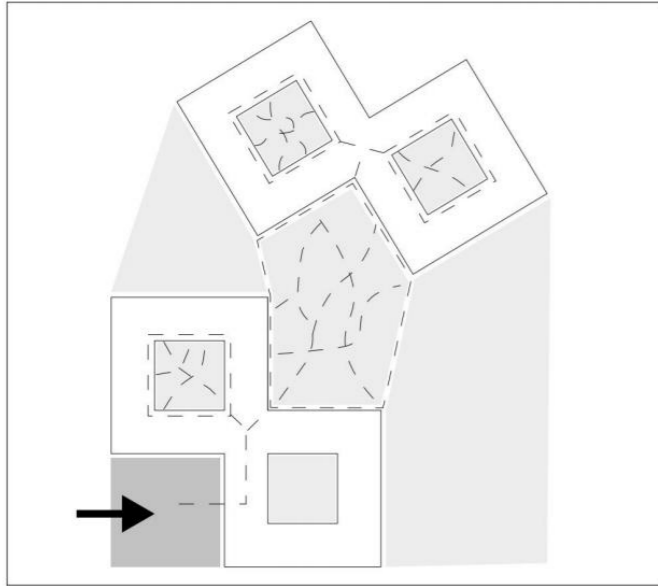
Roof



The roof takes inspiration from the surrounding buildings with their traditional gable roofs. However, instead of using only one gable roof across the whole building, the design derives from placing multiple gable roofs close to one another and only using the short end side of them to form the shape. The roof slopes downwards to its lowest point towards the atrium to maximize the available sunlight in it.

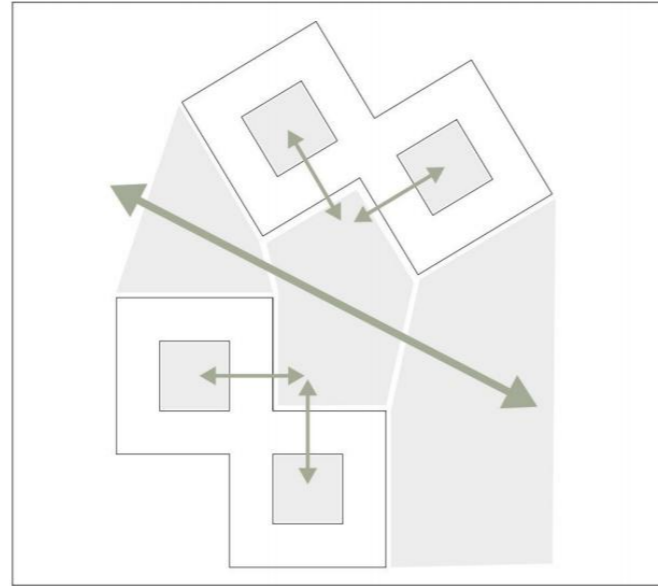
ILLUSTRATIONS

Pathways



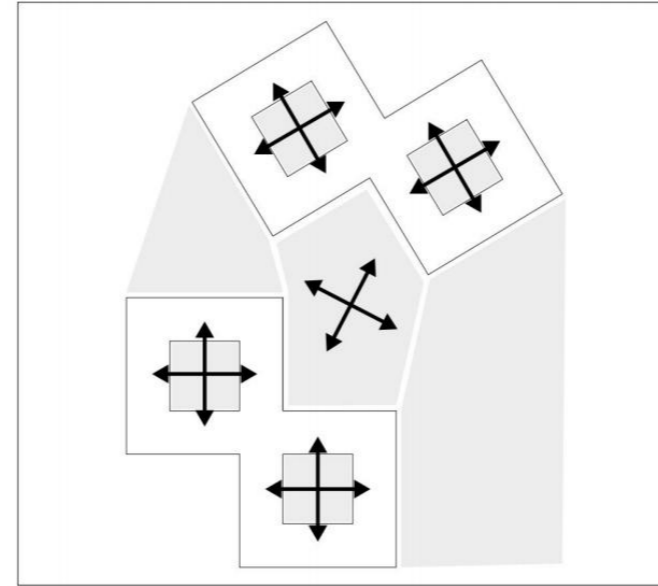
The final form of the building created a public square connected to the entrance. To handle the concept of circulation the building provides the residents with pathways that give the opportunity to always walk around with no dead end corridors. This is most important within the corridors in the units but also in the courtyard where there is one protected pathway around the whole yard.

Connections



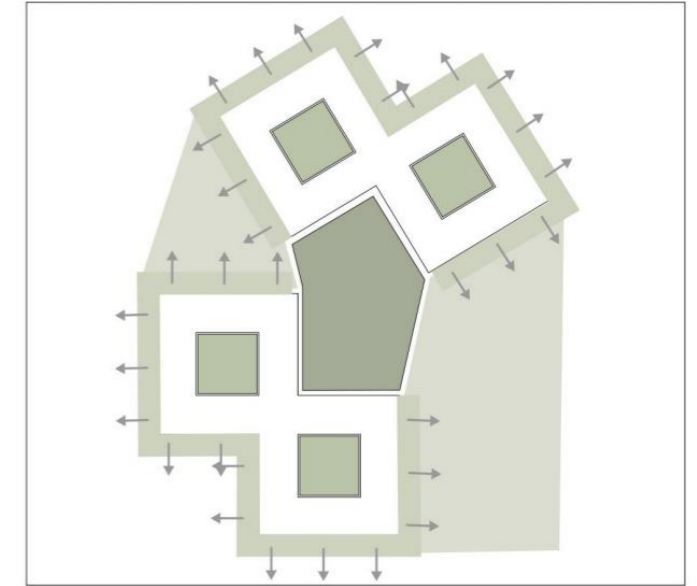
The building connects the atrium and courtyard together with a common kitchen and living room for each unit. This means that the public areas in both units and outside are easy to locate. The green area by the creek is also kept connected to the neighborhood through the common courtyard where there is a lower building height between the buildings and kept transparent only separated by wooden panels.

Sightlines



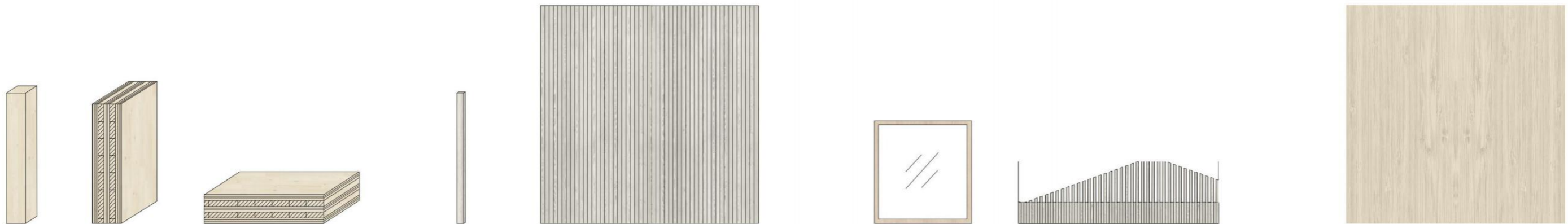
A transparent atrium is created to ease the overview within the buildings which makes it easy for both staff and tenants to see each other and to locate the functions within the building. This can prevent the feeling of loneliness and disorientation since it will be easy to see other people moving around the atrium. The courtyard has been designed to keep sightlines unobstructed between the two stairwells and with several open areas facilitating orientation.

Greenery connections



You will always be close to nature and greenery while being in the dementia village. Every apartment is facing the outside and there are always green areas in close connection to the building. The atriums are made green with trees, bushes, grass and flowers which you will experience as soon as you step out of your apartment. In addition, the large courtyard is filled with greenery of different sorts, even the roofs of buildings there are made green.

Wood



Construction

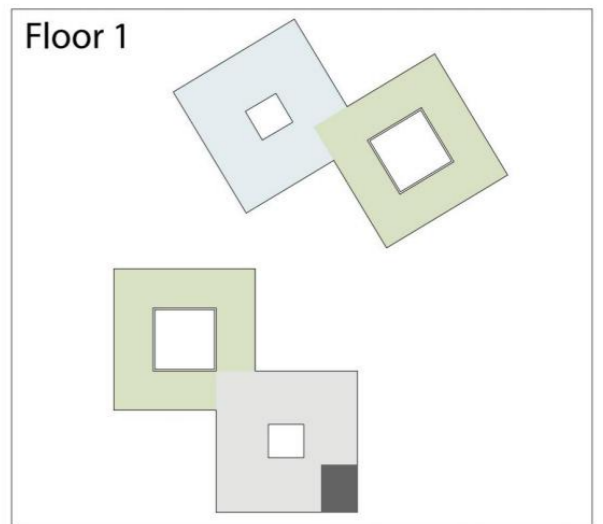
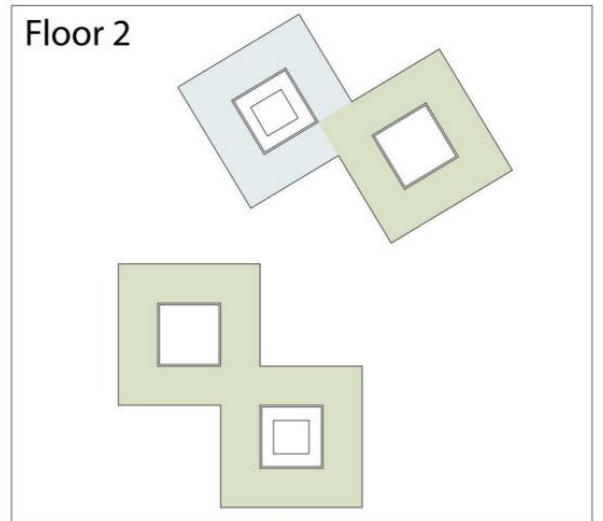
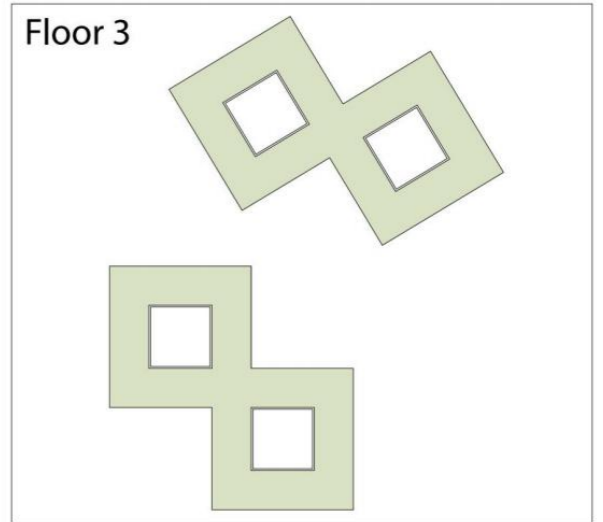
Facade

Details

Floor

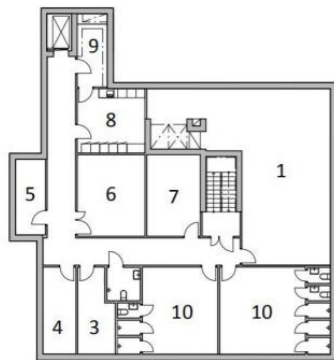
Wood is used throughout the whole project in all areas where it's made possible. The construction is made out of cross laminated timber and glued laminated timber assembled into columns, load bearing walls and floor slabs. The facade is made out of wood which will be treated so it's maintenance free. Also, all the details such as window frames, railings etc. will be constructed out of wood. Wooden floors have been used instead of plastic carpets which are usually used in these kinds of facilities.

SITE PLAN Scale 1:1000



BASEMENT Scale 1:500

FLOOR ONE Scale 1:500



- 1 Ventilation
- 2 Storage kindergarten
- 3 Sprinkler room
- 4 Incoming electricity
- 5 Incoming heating
- 6 General storage
- 7 Wheelchair storage
- 8 Staff laundry
- 9 Linnen storage
- 10 Dressing room



- 11 Foyer / Reception
- 12 Wheelchair storage
- 13 Grocery store
- 14 Gym
- 15 Flexi room
- 16 Flexi room - storage
- 17 Store - storage
- 18 Office
- 19 Open office
- 20 Indoor atrium
- 21 Meeting room
- 22 Staffroom
- 23 Drug storage
- 24 General storage
- 25 Waste room kitchen
- 26 Waste room
- 27 Delivery
- 28 Cleaning
- 29 Dish room
- 30 Kitchen storage
- 31 Freezer room
- 32 Fridge room
- 33 Preperaton
- 34 Kitchen
- 35 Restaurant / Pub
- 36 Conference room
- 37 Storage
- 38 Waste room
- 39 Cleaning
- 40 Laundry
- 41 36sqm apartment
- 42 41 sqm apartment
- 43 36 sqm apartment
- 44 TV-room
- 45 Living room
- 46 Kitchen
- 47 Hub
- 48 Café
- 49 Hairdresser / Spa
- 50 Library
- 51 Restaurant outdoor area
- 52 Outdoor atrium
- 53 Staff outdoor area



ENTRANCE Scale 1:200



 Public	 Kitchen & Delivery	 Staff	 Functions for the residents
--	--	---	---

- | | | | |
|-------------------------|--------------------|-----------------------|----------------------------|
| 11 Foyer / Reception | 18 Office | 25 Waste room kitchen | 32 Fridge room |
| 12 Wheelchair storage | 19 Open office | 26 Waste room | 33 Preparation |
| 13 Grocery store | 20 Indoor atrium | 27 Delivery | 34 Kitchen |
| 14 Gym | 21 Meeting room | 28 Cleaning | 35 Restaurant / Pub |
| 15 Flexi room | 22 Staffroom | 29 Dish room | 36 Conference room |
| 16 Flexi room - storage | 23 Drug storage | 30 Kitchen storage | 51 Restaurant outdoor area |
| 17 Store - storage | 24 General storage | 31 Freezer room | 53 Staff outdoor area |

ENTRANCE PLAZA RENDERINGS



FOYER & RESTAURANT RENDERINGS



COURTYARD Scale 1:200

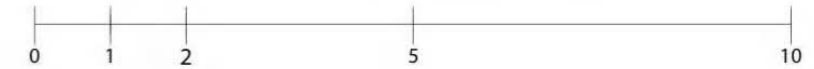
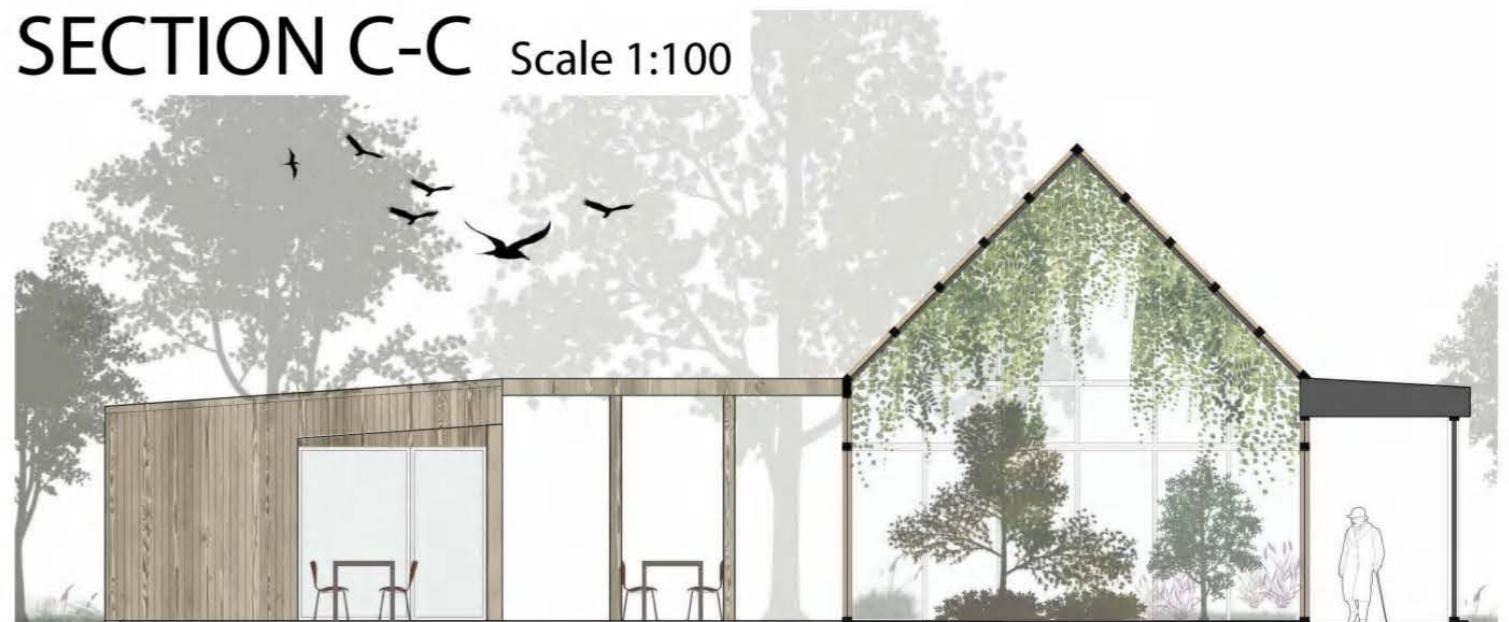
COURTYARD RENDERINGS



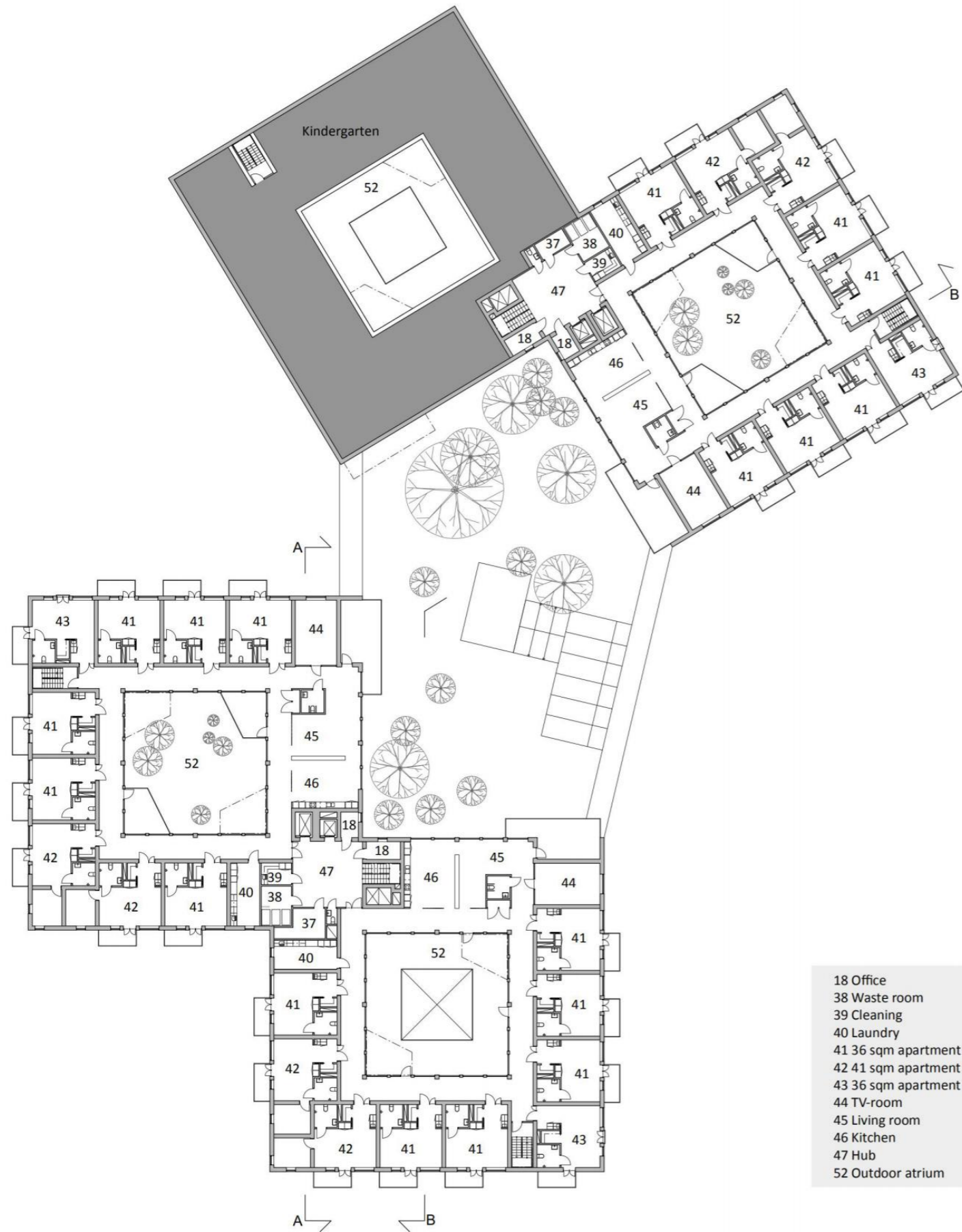
- 1 Winter garden
- 2 Outdoor storage
- 3 Pentry
- 4 Pergola
- 5 Outdoor sitting area
- 6 Boule court
- 7 Area for activity
- 8 Outdoor gym
- 9 Sitting area for unit
- 10 Pathways of hard-packed gravel
- 11 Roof protected pathway of concrete
- 12 Bird bath
- 13 Pathway of stones to experience different senses while walking around
- 14 Green islands: Grass, plantings, trees, bushes etc
- 15 Sitting area for café
- 16 Benches
- 17 Pond
- 18 Cultivation boxes
- 19 Sliding doors of wooden panels



SECTION C-C Scale 1:100

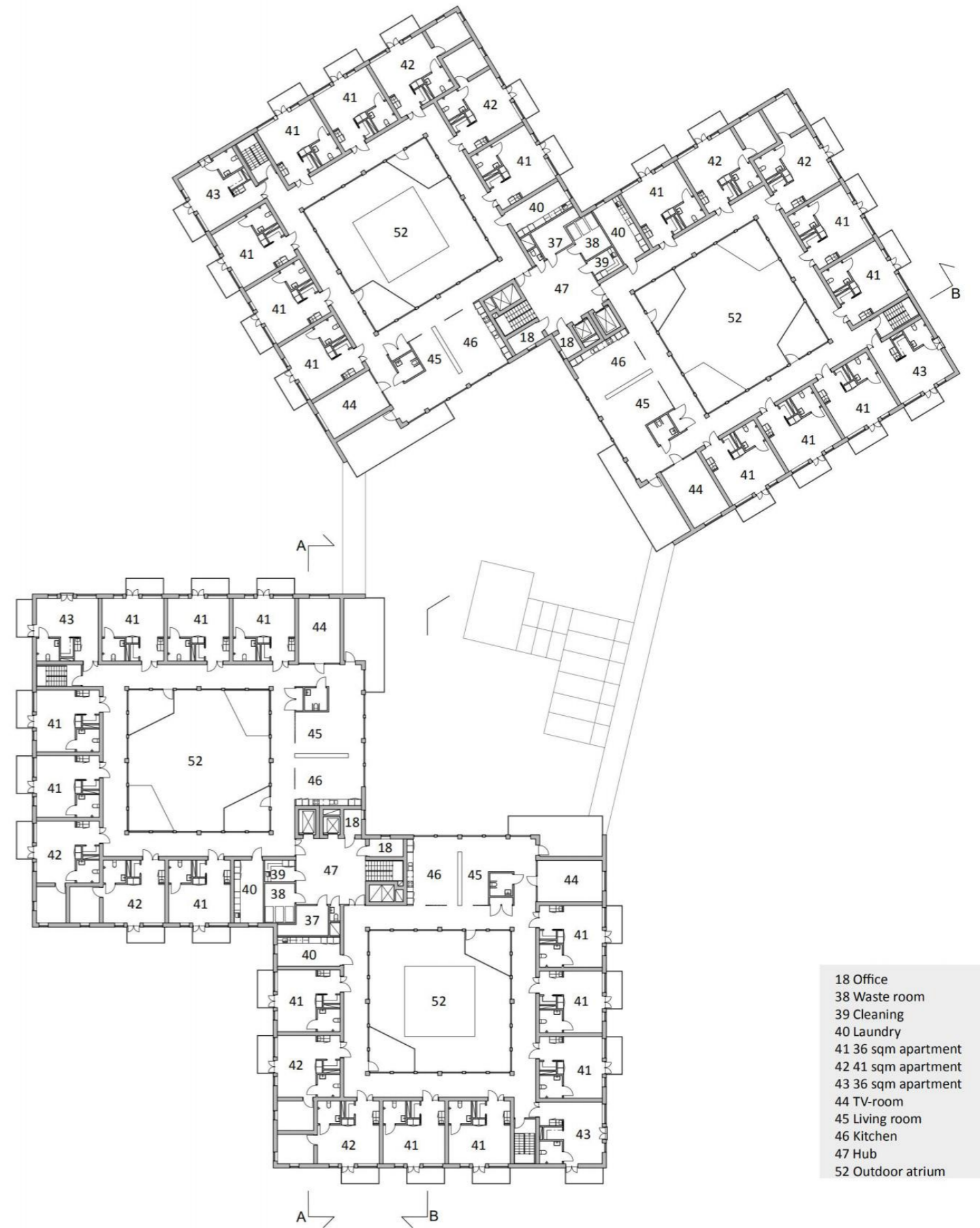


FLOOR TWO Scale 1:500



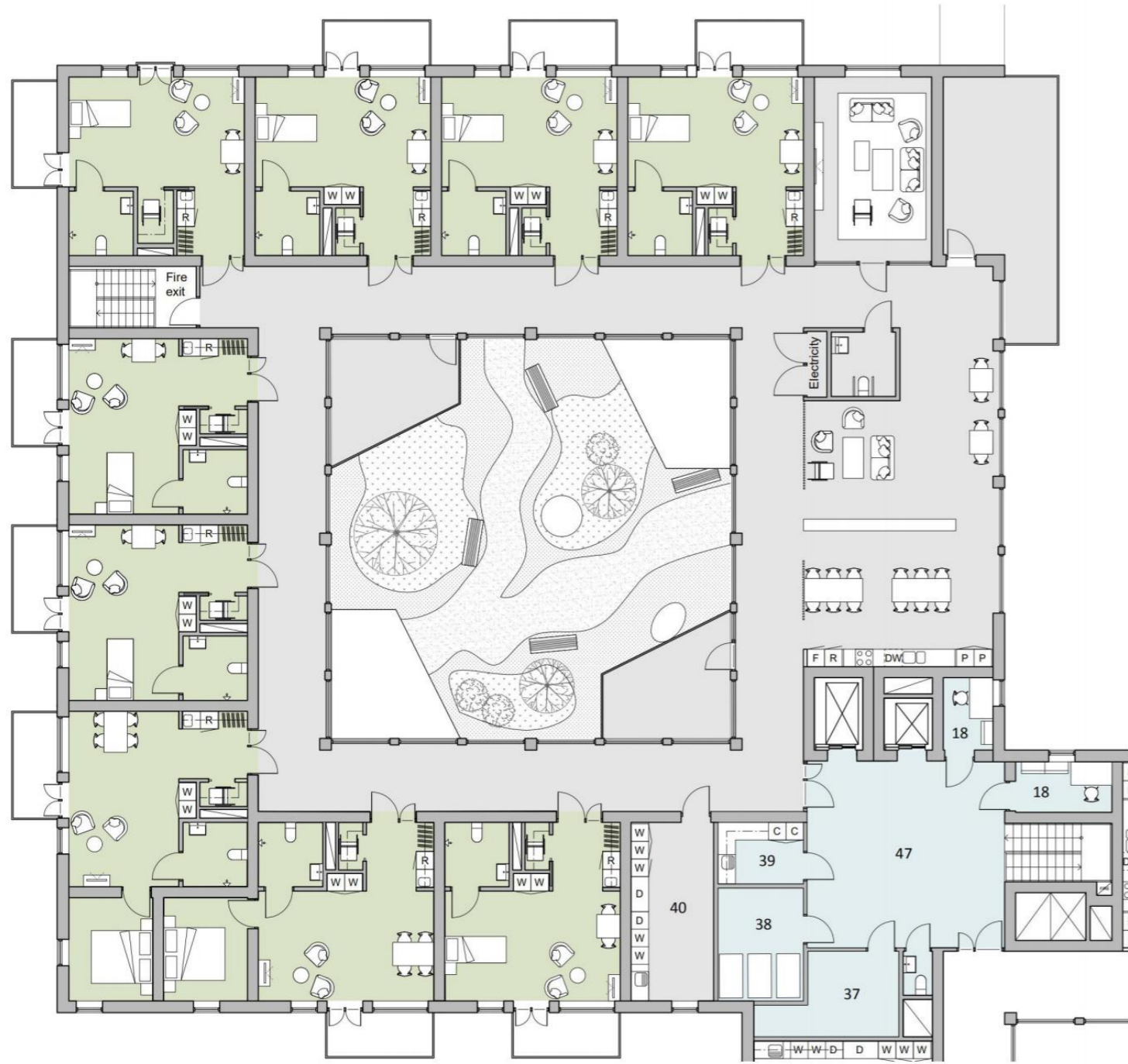
- 18 Office
- 38 Waste room
- 39 Cleaning
- 40 Laundry
- 41 36 sqm apartment
- 42 41 sqm apartment
- 43 36 sqm apartment
- 44 TV-room
- 45 Living room
- 46 Kitchen
- 47 Hub
- 52 Outdoor atrium

FLOOR THREE Scale 1:500

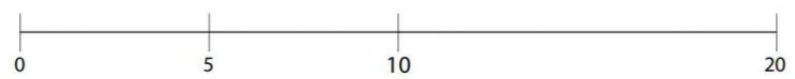


- 18 Office
- 38 Waste room
- 39 Cleaning
- 40 Laundry
- 41 36 sqm apartment
- 42 41 sqm apartment
- 43 36 sqm apartment
- 44 TV-room
- 45 Living room
- 46 Kitchen
- 47 Hub
- 52 Outdoor atrium





- Apartments
 -
 Staff / Shared functions
 -
 Unit area
- 18 Office
 - 38 Waste room
 - 39 Cleaning
 - 40 Laundry
 - 47 Hub



APARTMENT Scale 1:50



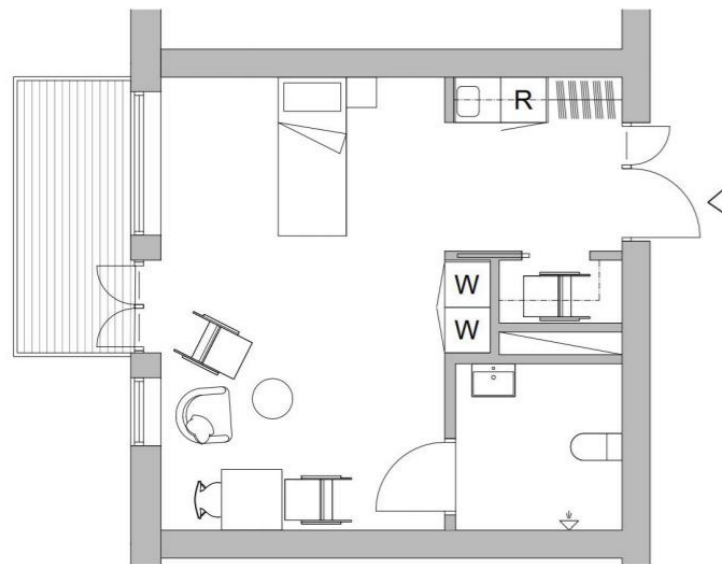
Example 1 36 sqm



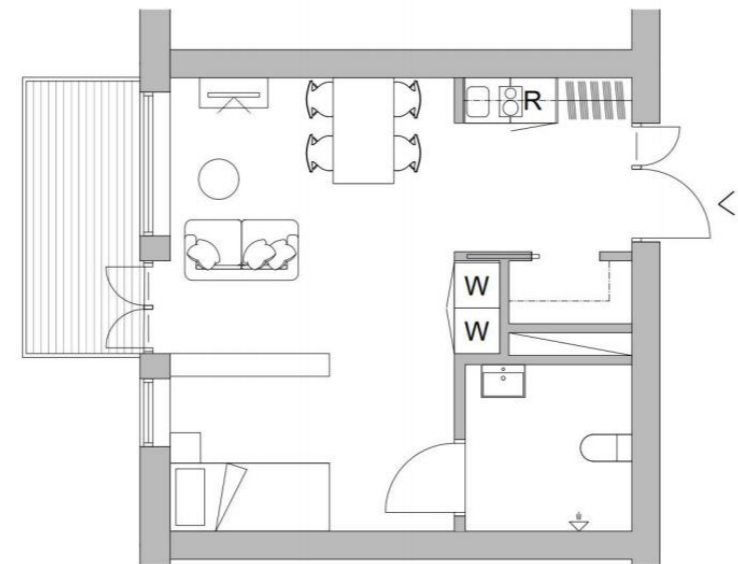
APARTMENT RENDERINGS



APARTMENT Scale 1:100



Example 2 36 sqm



Example 3 36 sqm



When entering the apartment you are greeted with a large hallway connected to a closet with possibility to store your wheelchair or walker in. Placed in the hallway is the kitchenette, with a sink and a under-the-benchttop refrigerator and there is also space and possibility to add a cooking plate. The hallway gets light from the windows to the outside but also from a frosted glass window in the side door of the entrance. This is easily opened to ease the transportation of furniture to the apartment.

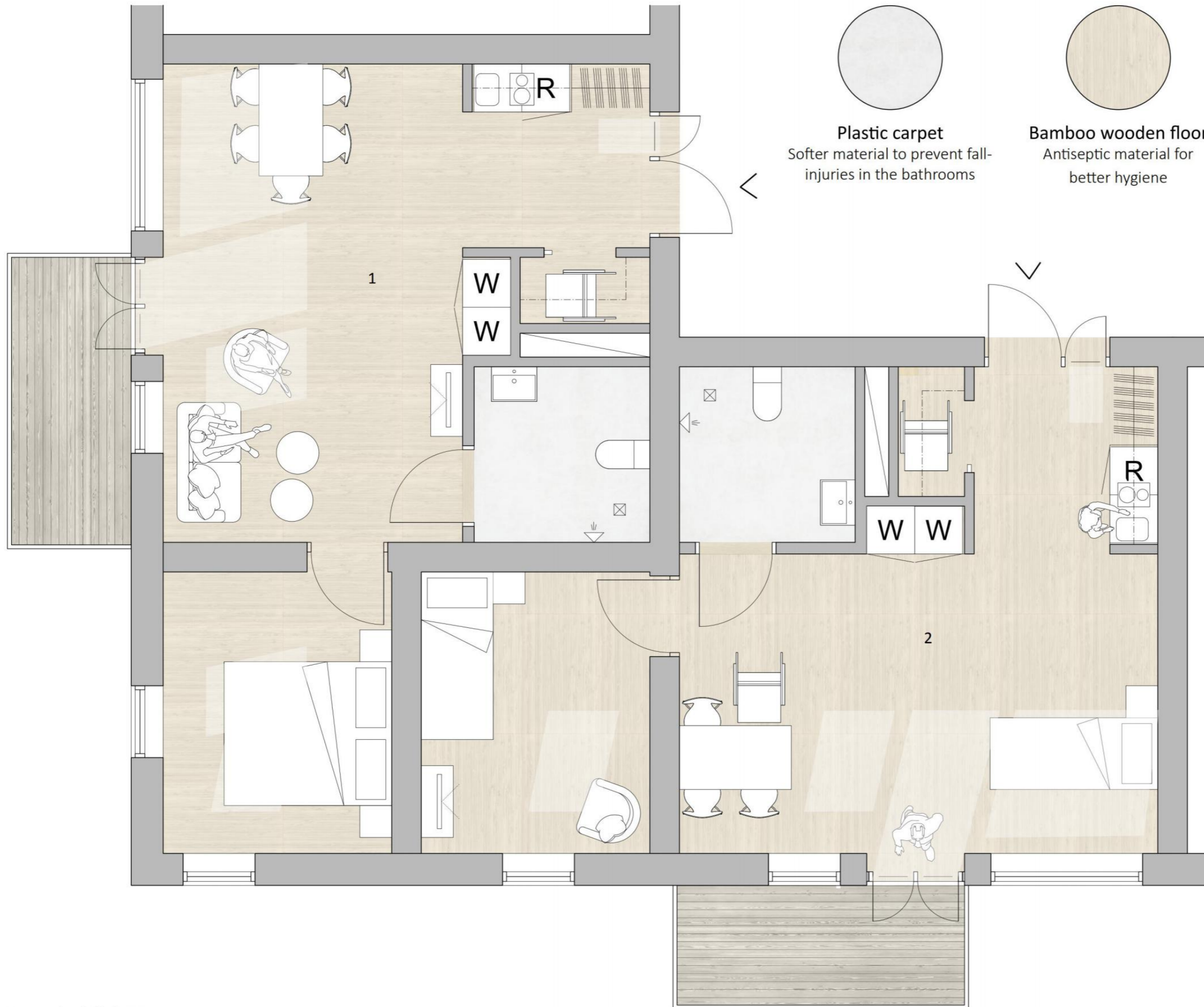
The main part of the apartment is a flexible room with large windows to let in a lot of light. The bigger window has a lower sill height to make it possible for people in wheelchairs to still sit by the window and look out. The bathroom door is intentionally facing this large open space to make it easy for the tenant to find it. Because of the large open floor plan, the main room can be furnished in many different ways to suit the tenants needs.

Example 1 shows a floor plan where the bed is placed close to the bathroom and staff have space to help the tenant moving around their bed. There is space left for both a smaller dining area, a TV and some armchairs.

Example 2 shows the layout when you need a bit more help at home. The bed is placed close to the entrance and it's the first thing you see when you open the door. Still, there is space for both a dining table and a lounge.

Example 3 is for the ones who don't need that much help at their own home. The bed has a natural spot alongside the wall which also makes it possible to divide the room with a shelving system or divider. The large floor area also makes it possible to use larger groups of furniture.

APARTMENTS Scale 1:50



In one corner of the units you find two (out of nine apartments per unit) apartments of a bigger size which have an extra, separate bedroom connected to the large open room. The entrance, hallway, bathroom and flexible room are the same as the smaller apartments and they keep all of the great qualities from those. The extra room allows two people to share this apartment and can be used either as in example 1 or as in example 2.

In example 1 it is used as a larger bedroom with space for a double bed which allows larger groups of furniture to be added to the flexible room.

In example 2 it is shown to be used as a bedroom for a single bed while another bed is placed closer to the entrance. A solution perfect for the couple where one of the residents needs a lot of assistance. The bedroom is large enough to then include a sitting area and TV in addition to a bed.

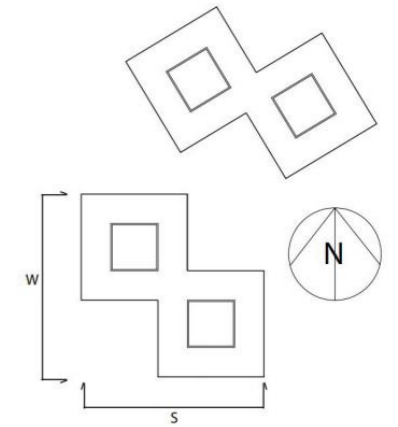
Example 1 & 2 47 sqm



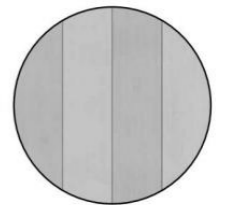
FACADES Scale 1:200



West



South



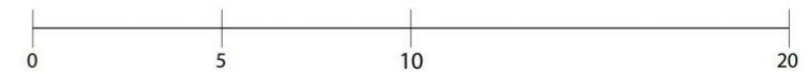
Zink roof



Window frames in wood

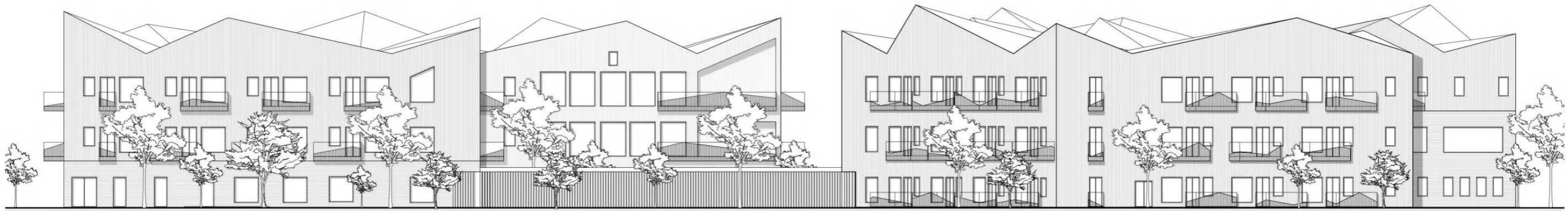


Facades in thermowood



FACADES

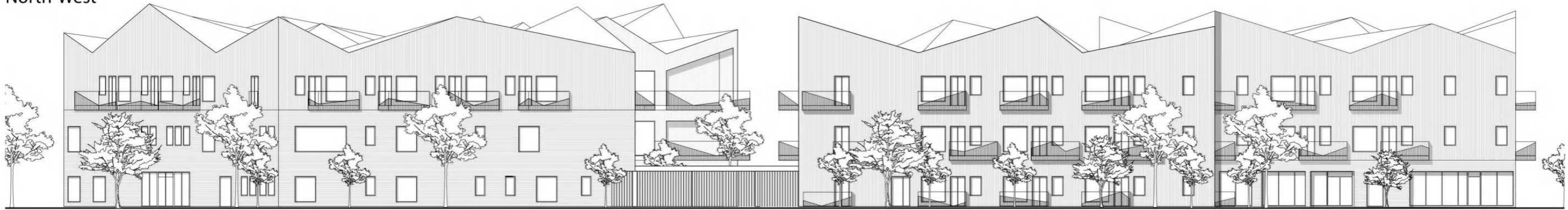
Scale 1:300



East



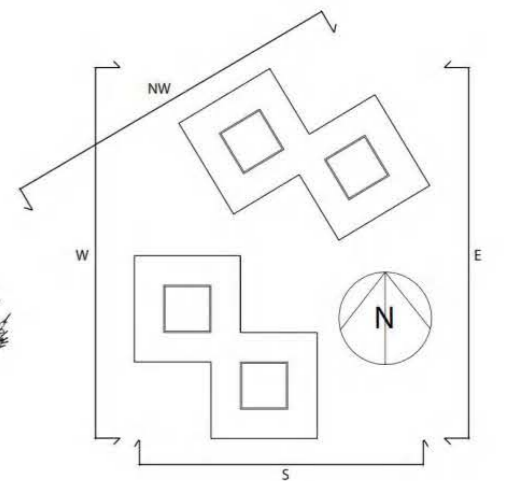
North-West



West



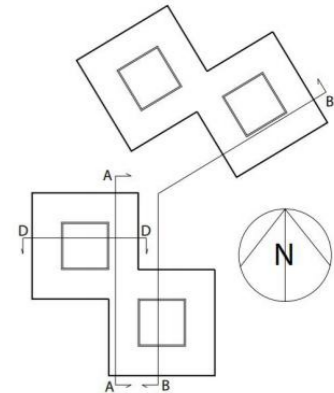
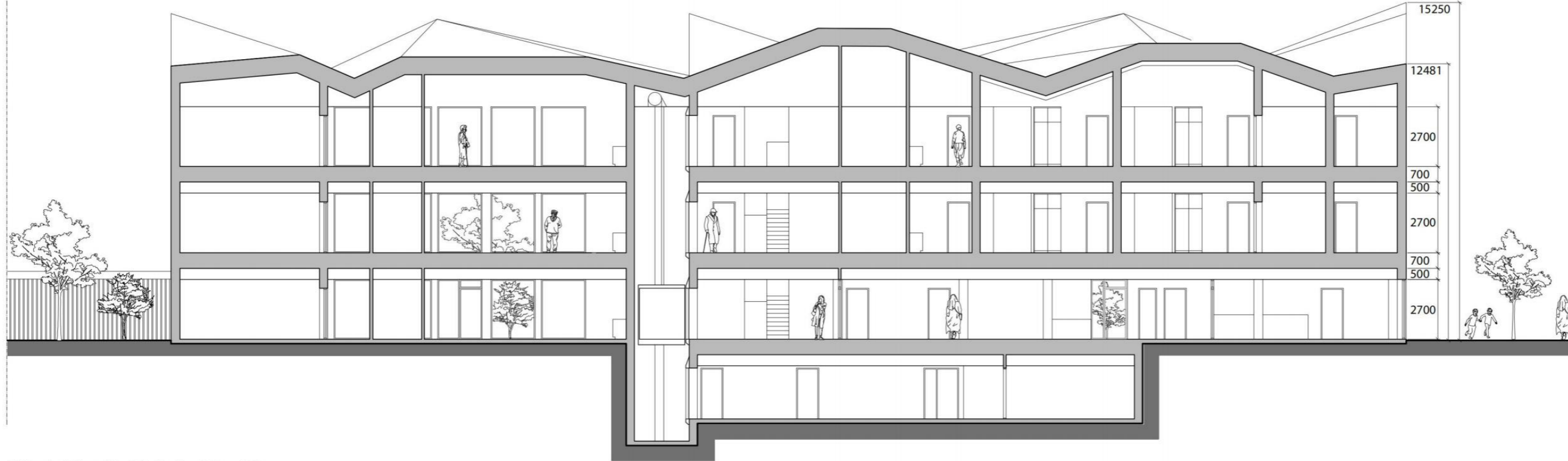
South



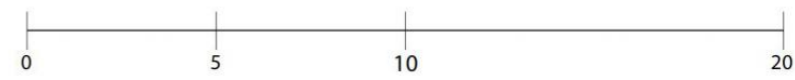
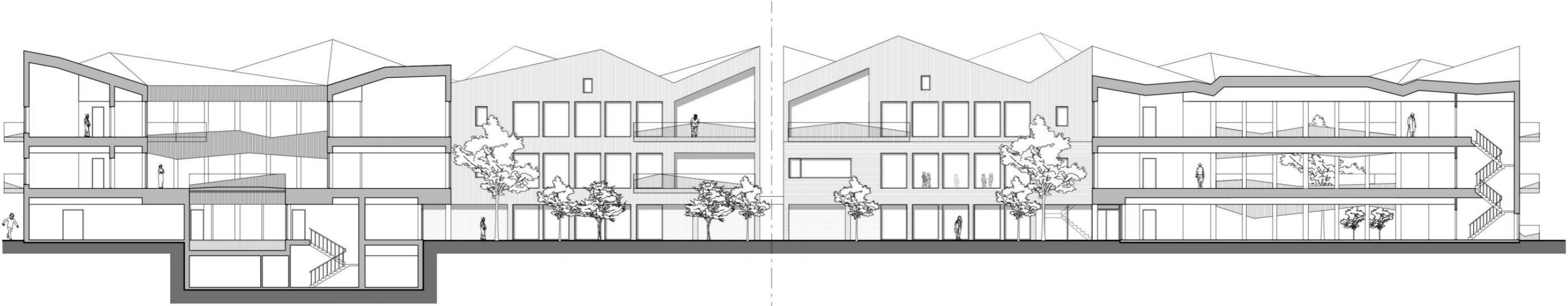
EXTERIOR RENDERINGS



SECTION A-A Scale 1:200



SECTION B-B Scale 1:300



SECTION D-D



DETAIL FACADE & SECTION Scale 1:40

