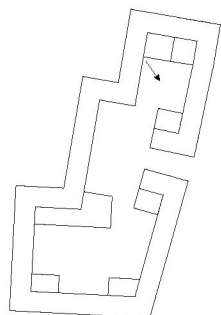


# LOST TOGETHER

*A Dementia Village in Önnered*



*Perspective of Nordic courtyard.*



*Linnea Nykvist - Meyav Sandy - Sandra Andersson  
Residential healthcare AUT 164*

# INTRODUCTION

*“Lost really has two disparate meanings. Losing things is about the familiar falling away, getting lost is about the unfamiliar appearing”*  
- Rebecca Solnit

Dementia is a disease affecting our brain. The symptoms vary depending on which part of the brain is affected but it makes you lose abilities or connections to emotions which once made us who we are. You search for memories and thoughts which you can no longer find. You try to do everyday task but you no longer know how. You feel afraid, embarrassed and unable. You are no longer in control. You feel lost.

As a reaction many people with dementia withdraw from others, creating a smaller and safer world. Our project departs from this point and the feeling of being out of control and lost. Even if we are lost, we are here lost together. The building focused inward creating a smaller and safer place but still with a clear connection to the bigger world outside. The more private facilities are placed along the outer facade, the semi private along the inner facade and the public facilities are reached from the courtyard. The residents can chose the degree of interaction they like, from observer to participant. The building focuses inwards but invites the neighbors to use its facilities such as the square with commercial facilities, the gathering hall and the restaurant. With visitors stepping into their small world the residents can still be apart of a bigger society.

Glazed corridors and open spaces enables overview and orientation but is also important in an health perspective. Sunlight and views of greenery is important to our mental wellbeing. To encourage physical activity and for the residents to go outside a lot of effort is put into the gardens which are divided into different themes enhancing the seasons. Hens and cats can be found here since animals can be easier for people with dementia to connect to or via.

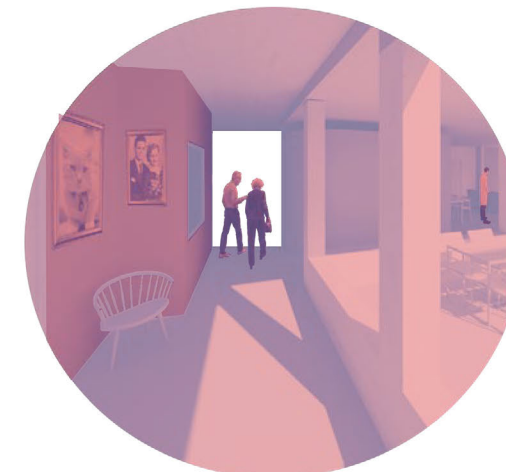
# CONCEPT



LOST TOGETHER



GREENERY

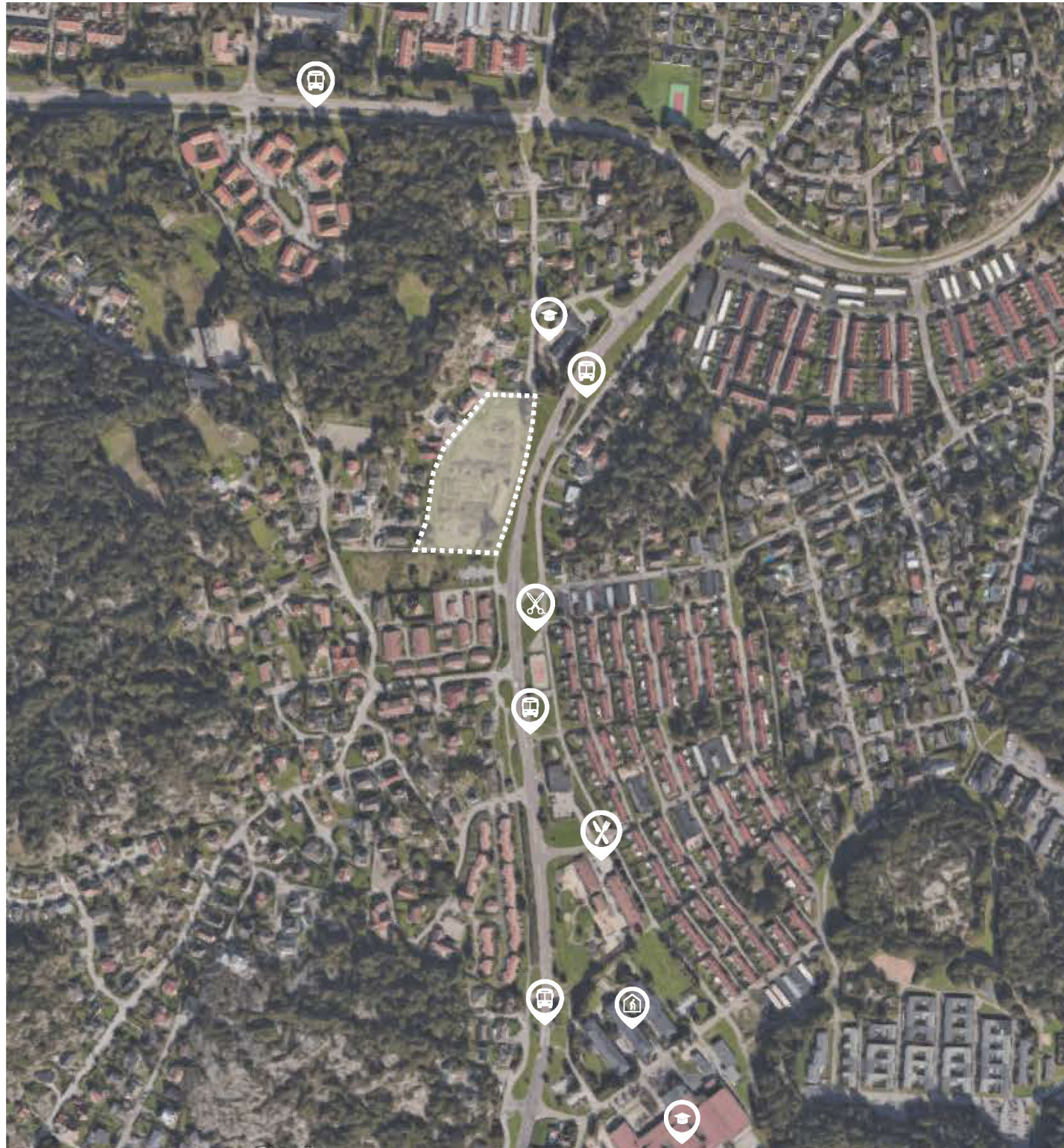


WAYFINDING



ACTIVITIES

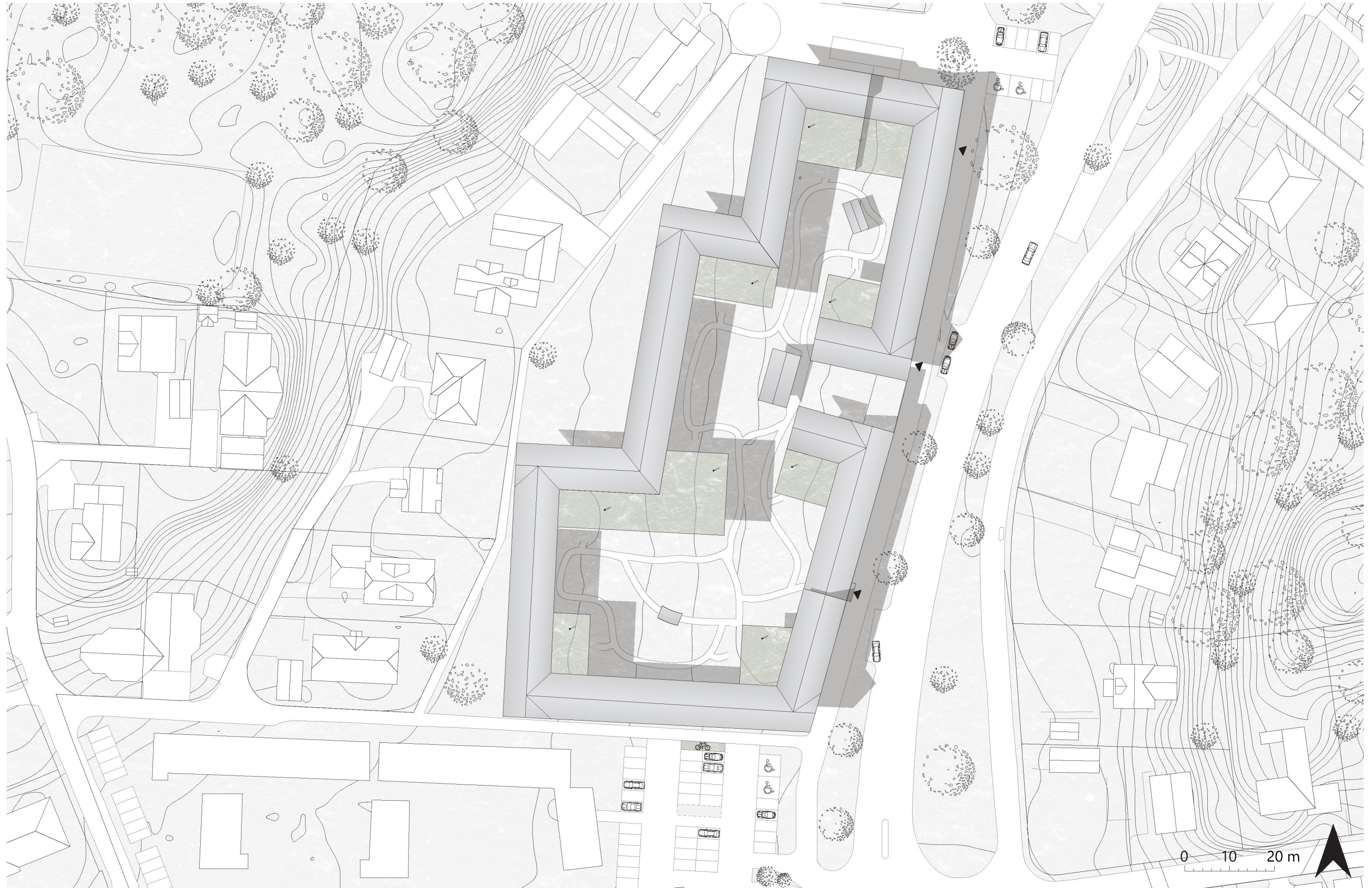
# SITE ANALYSIS



The site of the Dematia village is located in Önnared, Gothenburg. Önnared is mostly a suburban area with one family homes and rowhouses. There is one major road passing through the area that the site is located next to. The site is also located next to a preschool and a school. There are not many stores and restaurants in the area today. On the site opposite of the Village a new assisted living for elderly is planned.

The surrounding architecture is traditional two story wooden buildings with pitched roofs with the exception of one old farm house. There are no buildings on the site today and it is covered in reeds which makes it an all year green space for the neighbourhood.

SITEPLAN  
1:800



*Linnea Nykvist - Meyva Sandy - Sandra Andersson  
Residential healthcare AUT 164  
Lost Together*

# ENTRANCE FLOOR

The large courtyard is divided into three different zones to create variety and diversity for each resident to have an outdoor place he or she likes. The three environments in the zones are achieved through the vegetation and surroundings. Each zone is connected to a public function in the complex. The three courtyard are connected through a path.

## 1. The Nordic courtyard

The courtyard that might remind most of the residents of their old backyard is the Nordic courtyard that is directly connected to the restaurant. It is located in the north east corner of the building where the Nordic theme continues since the menu is inspired by Swedish cuisine. At the courtyard there is a free-standing hen house connected to a greenhouse. The residents can both play with the animals and grow their own plants here. The vegetation is mixed with apple trees and birches.

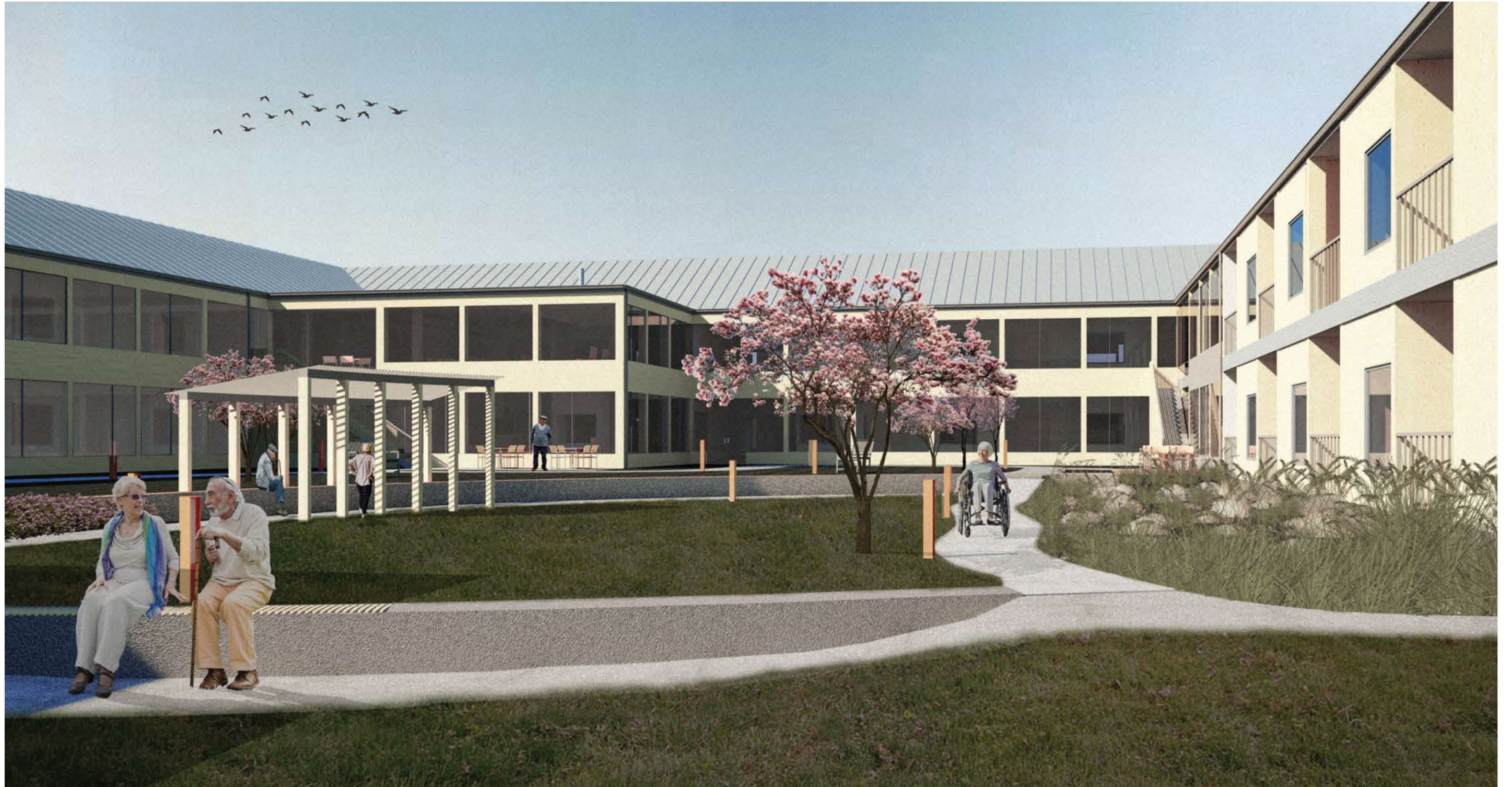
## 2. The urban courtyard

The urban courtyard is filled with actives and functions. A free-standing gathering hall divides the urban square on the courtyard from the greener area. The gathering hall functions as a meeting place for smaller concerts, events, funerals and so on. The urban square is framed by a cafeteria, bakery, flower store, pharmacy, hair salon and a conservatory with orange trees and olives trees that faces to the main street. Here the residents can meet people from the neighbourhood and feel included with the outside. Levendelplants are found on the square and sends a pleasant smell. On the greener area a boule court is placed to allow the residents to be more active in their daily lives.

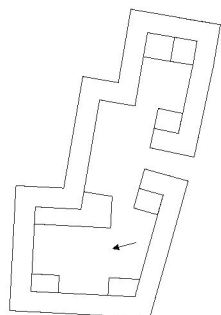
## 3. The wellness courtyard

The most calming courtyard is located next to the spa, gym and the reception area. Here the vegetation is mainly inspired from Asia where the cherry trees blossom. Reed and stones are placed along the façade with the balconies to create a gradient zone from public to private. The different levels on the courtyard allows the residents to walk besides uplifted green areas and the possibility to sit on them. A free-standing pavilion is placed along the path where one can be sheltered from rain, snow but mostly sunlight.





Perspective of wellness garden.



Linnea Nykvist - Meyav Sandy - Sandra Andersson  
Residential healthcare AUT 164  
Lost Together

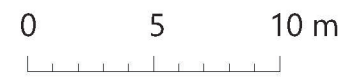
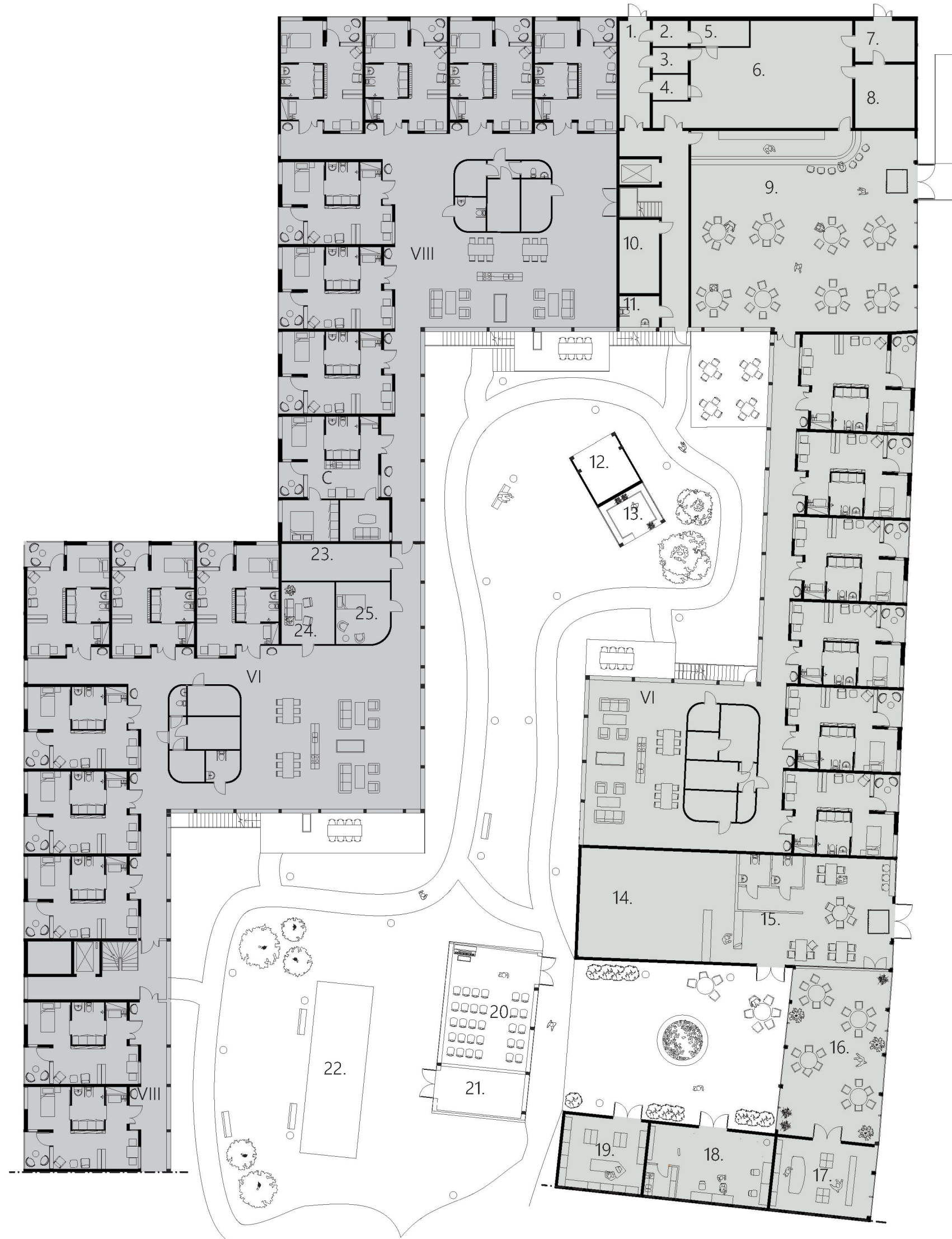
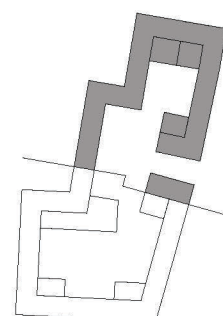
# FIRST FLOOR

1:300

- VI 6 APARTMENT UNIT
- VIII 8 APARTMENT UNIT
- X 10 APARTMENT UNIT
- C COUPLE APARTMENT

1. DELIVERY
2. STORAGE
3. FRIDGE
4. FREEZER
5. CLEANING
6. KITCHEN
7. WASTE
8. DISHES
9. RESTAURANT
10. TECHNICAL
11. STAFF TOILET
12. CHICKEN COOP
13. GREENHOUSE
14. BAKERY
15. CAFÉ
16. CONSERVATORY
17. FLOWER SHOP
18. HAIRDRESSER
19. PHARMACY
20. GATHERING HALL
21. OUTDOOR STORAGE
22. BOULE COURT
23. STORAGE
24. STAFF PAUSE ROOM
25. STAFF RESTING ROOM

- + 11.5
- + 13



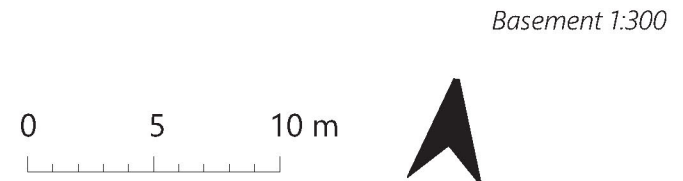
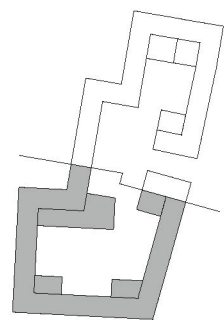
# FIRST FLOOR

1:300

- VI 6 APARTMENT UNIT
- VIII 8 APARTMENT UNIT
- X 10 APARTMENT UNIT
- C COUPLE APARTMENT

- 26. STORAGE
- 27. FLEXIROOM
- 28. CHANGING ROOM
- 29. MEDICAL STORAGE
- 30. CONFERENCE ROOM
- 31. GYM
- 32. WC
- 33. SPA
- 34. MANAGERS OFFICE
- 35. STAFF PAUSE ROOM
- 36. OFFICES
- 37. MEETING ROOM
- 38. RECEPTION AND LIBRARY
- 39. ELECTRICITY
- 40. SPRINKLER ROOM
- 41. DISTRICT HEATING
- 42. WHEELCHAIR STORAGE
- 43. DRESSING ROOM
- 44. LAUNDRY

- + 10
- + 11.5
- + 13



Basement 1:300



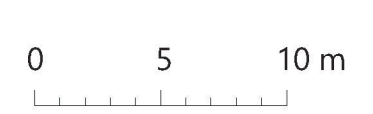
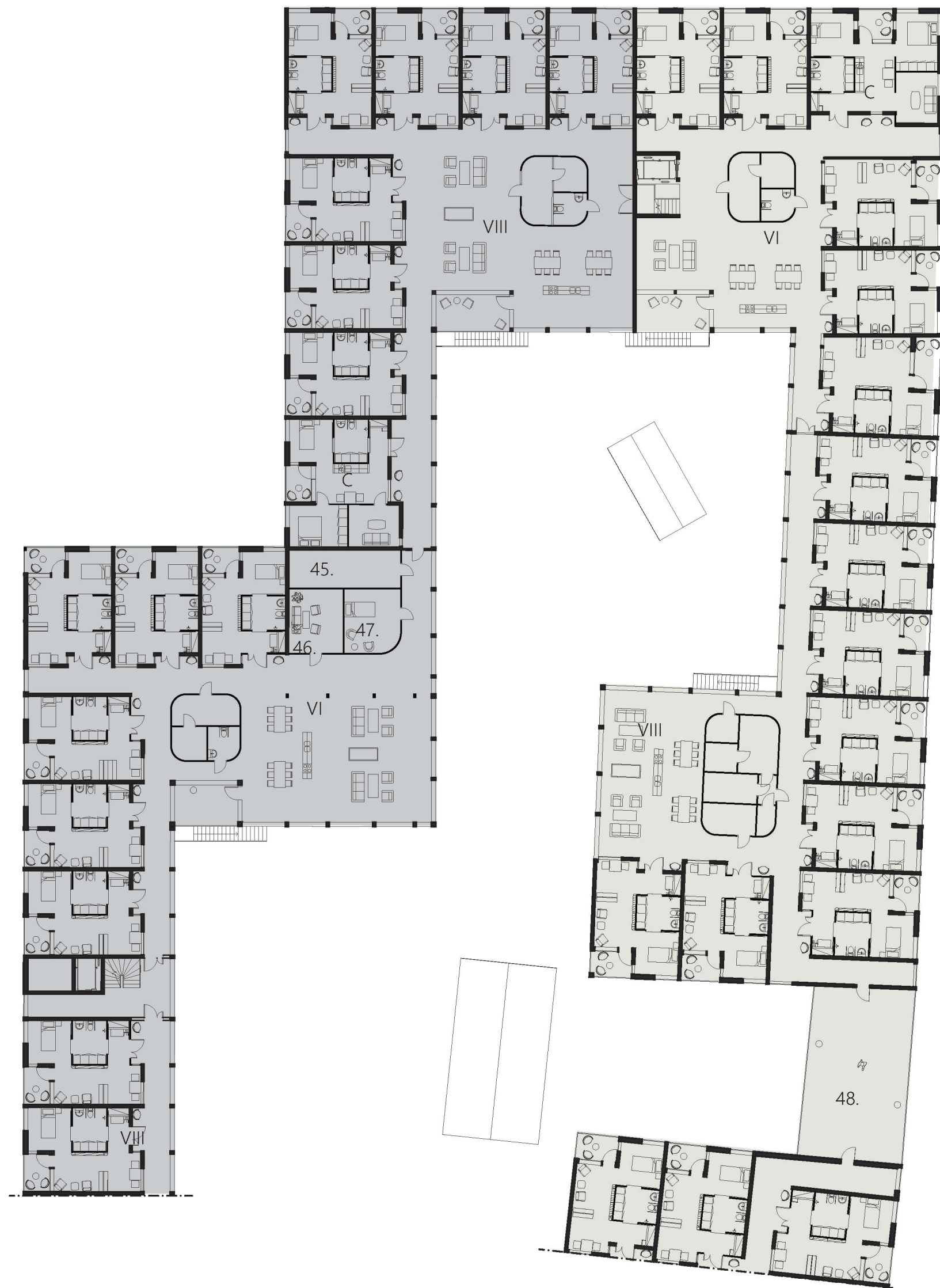
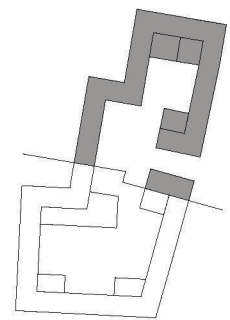
# SECOND FLOOR

1:300

- VI 6 APARTMENT UNIT
- VIII 8 APARTMENT UNIT
- X 10 APARTMENT UNIT
- C COUPLE APARTMENT

- 45. STORAGE
- 46. STAFF PAUSE ROOM
- 47. STAFF RESTING ROOM
- 48. TERRASS

- + 14.8
- + 16.3



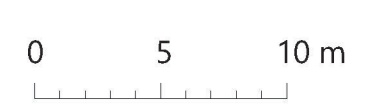
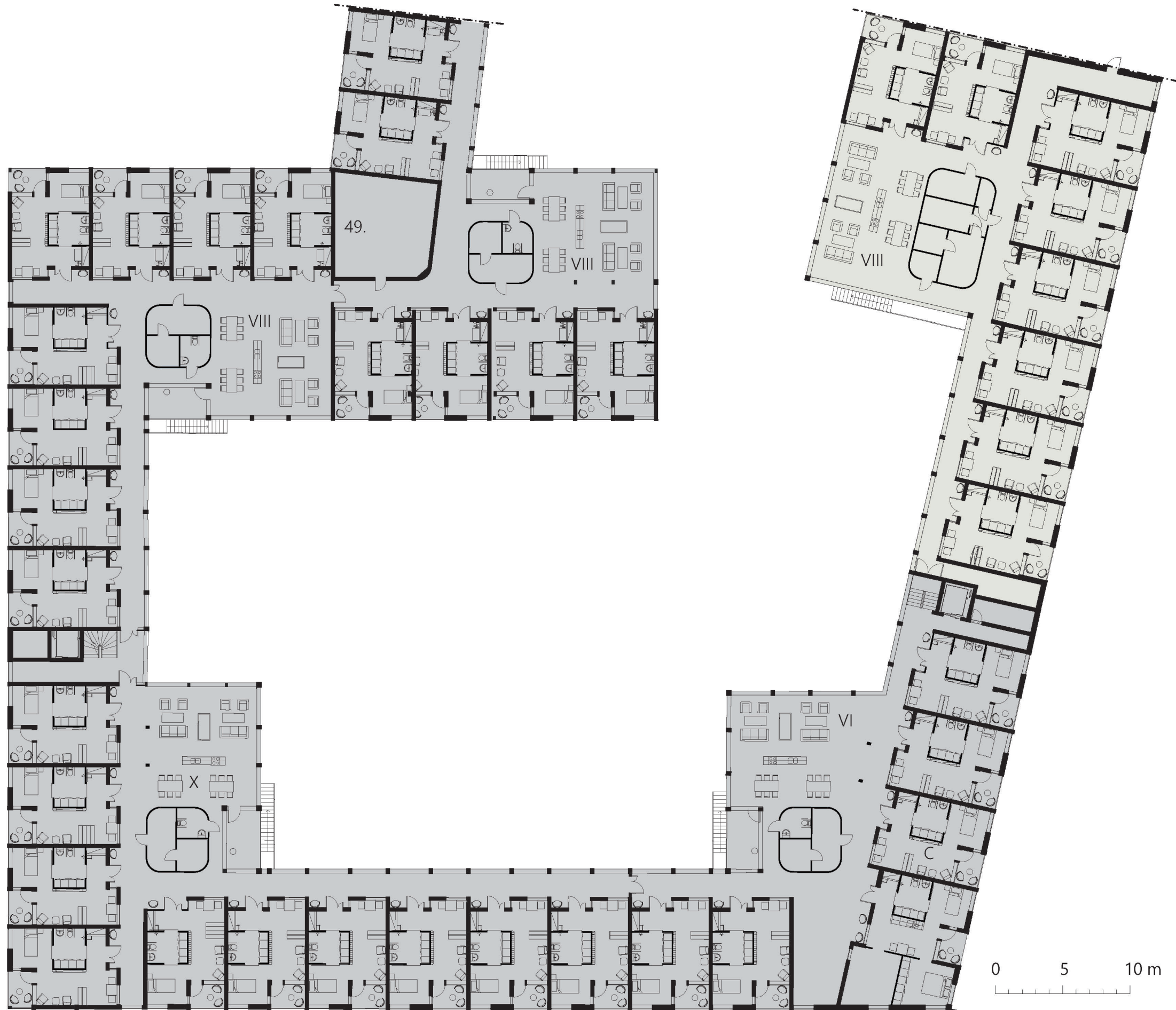
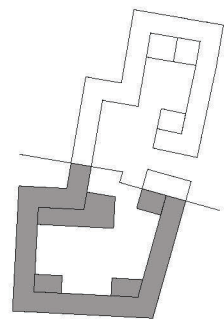
# SECOND FLOOR

1:300

- VI 6 APARTMENT UNIT
- VIII 8 APARTMENT UNIT
- X 10 APARTMENT UNIT
- C COUPLE APARTMENT

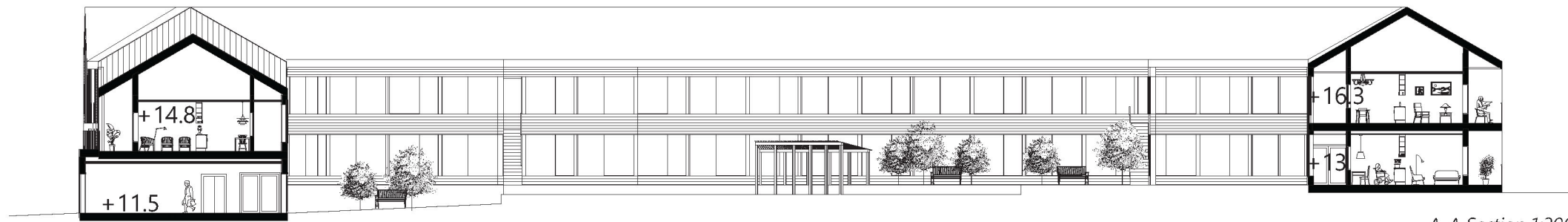
49. STORAGE

- + 14.8
- + 16.3

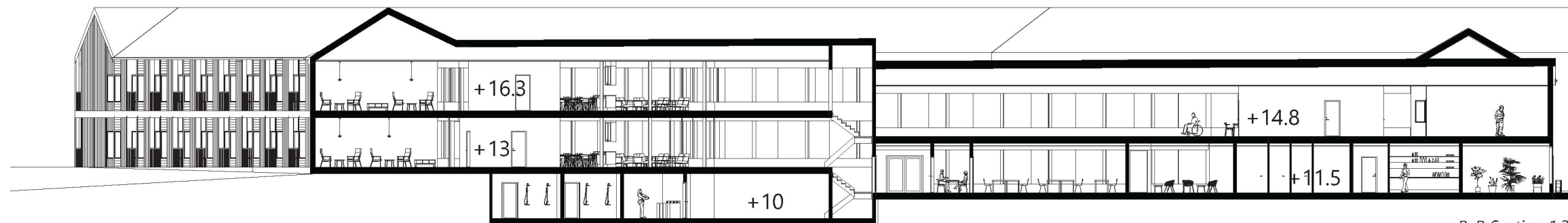


# SECTIONS

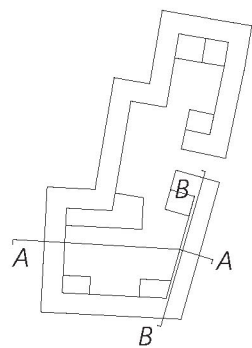
1:300



A-A Section 1:300



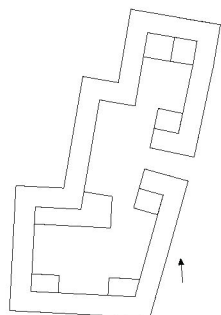
B-B Section 1:300



Linnea Nykvist - Meyav Sandy - Sandra Andersson  
Residential healthcare AUT 164  
Lost Together



*Perspective from main entrance*

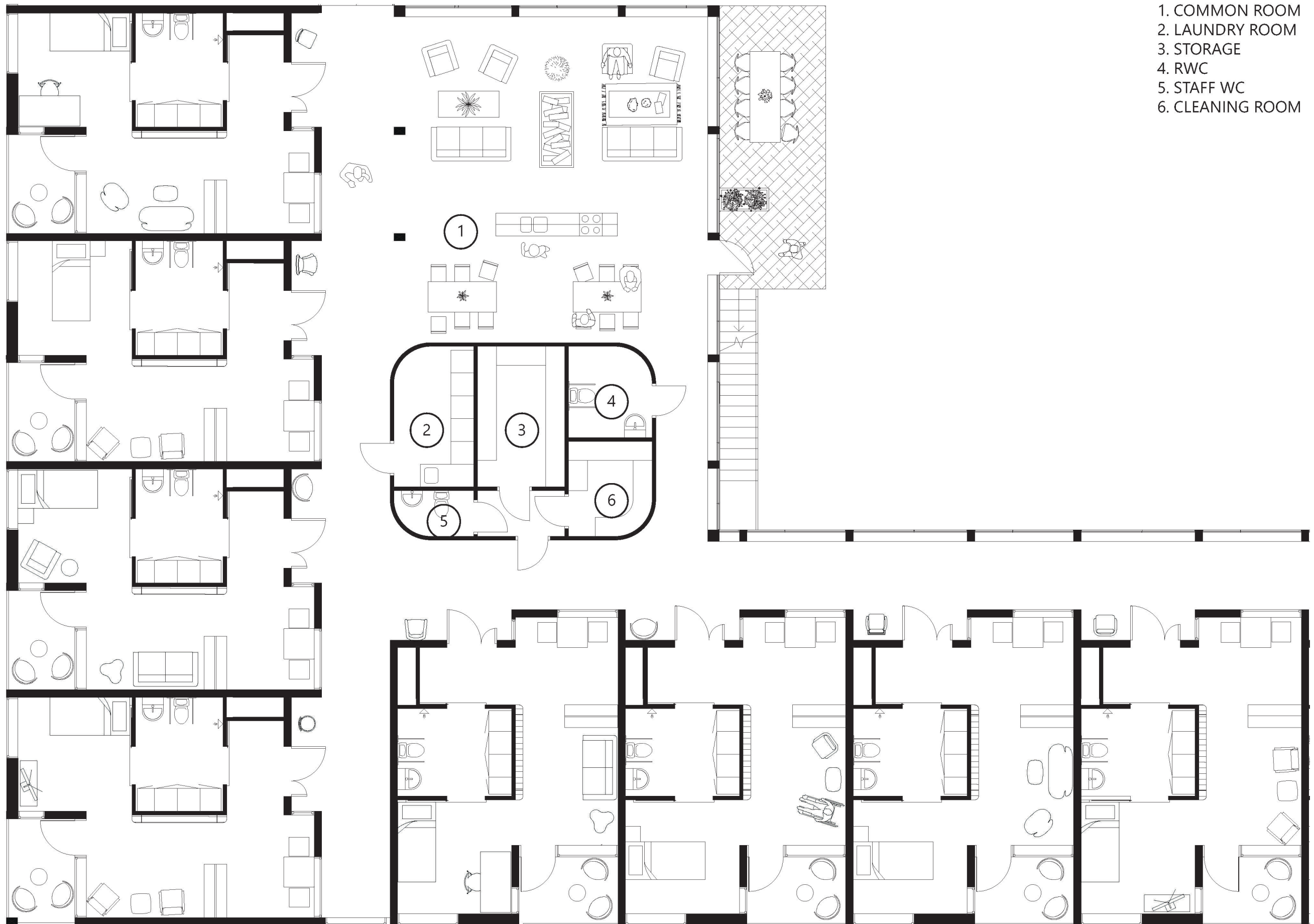


*Linnea Nykvist - Meyav Sandy - Sandra Andersson  
Residential healthcare AUT 164  
Lost Together*

# UNIT PLAN FIRST FLOOR

1:100

- 1. COMMON ROOM
- 2. LAUNDRY ROOM
- 3. STORAGE
- 4. RWC
- 5. STAFF WC
- 6. CLEANING ROOM



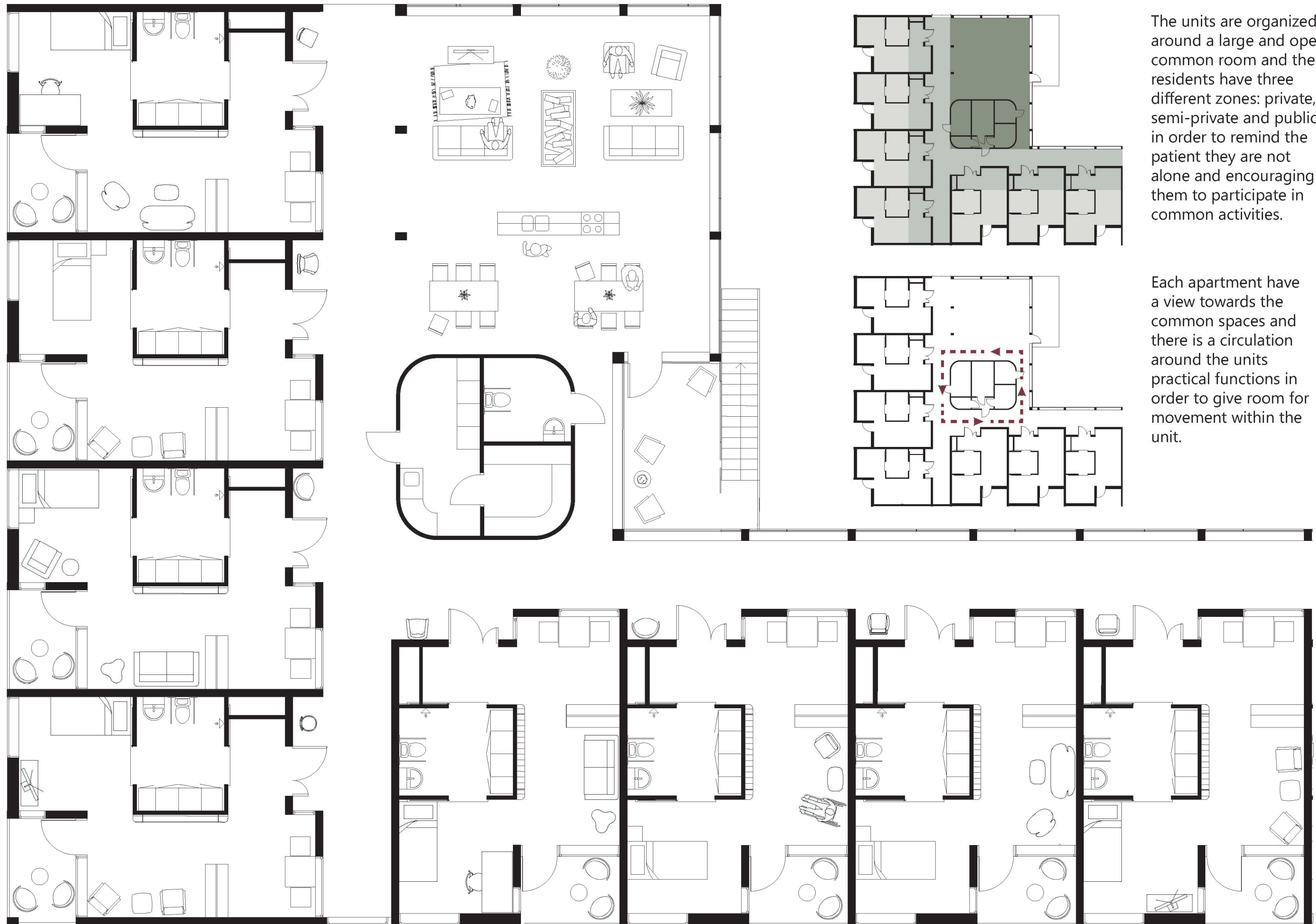
# UNIT SECOND FLOOR

1:100

# UNIT CONCEPTS

The units are organized around a large and open common room and the residents have three different zones: private, semi-private and public in order to remind the patient they are not alone and encouraging them to participate in common activities.

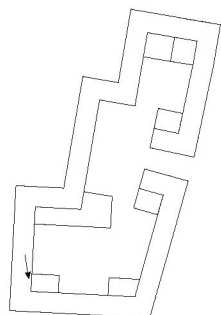
Each apartment have a view towards the common spaces and there is a circulation around the units practical functions in order to give room for movement within the unit.



0 5 m

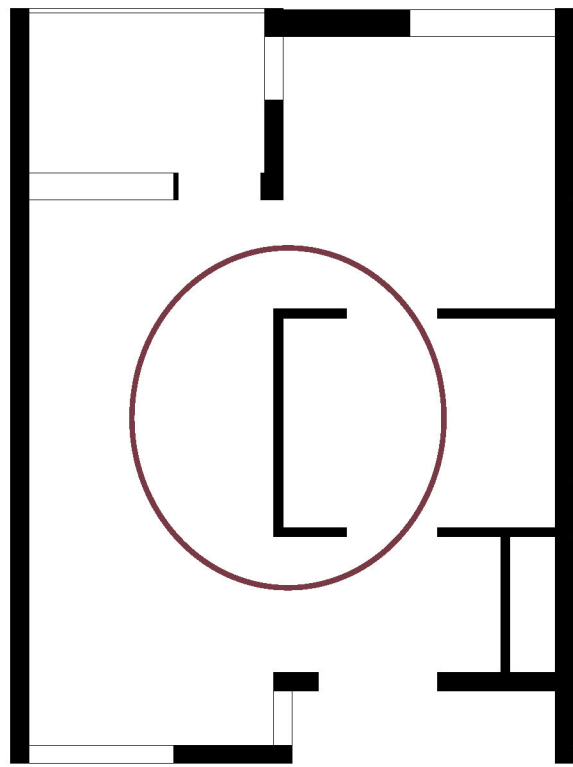


*Perspective from the common room*

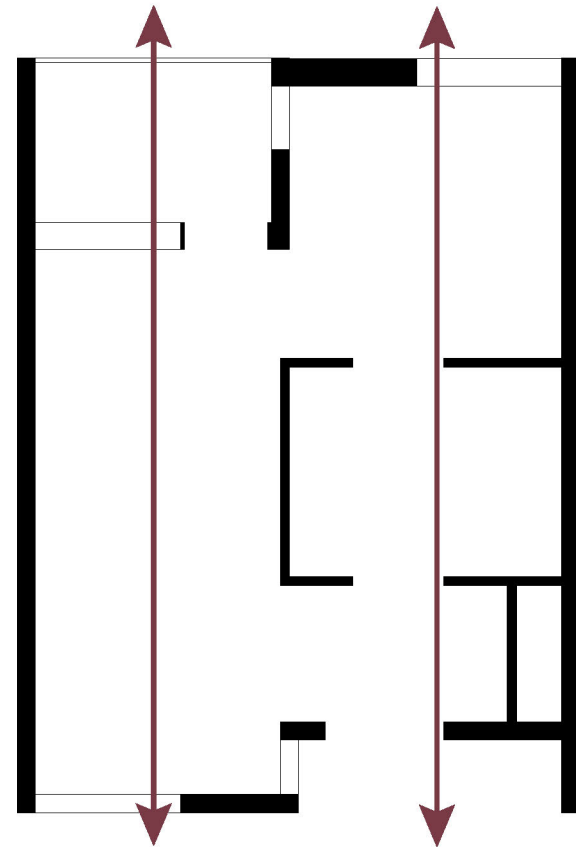


*Linnea Nykvist - Meyav Sandy - Sandra Andersson  
Residential healthcare AUT 164  
Lost Together*

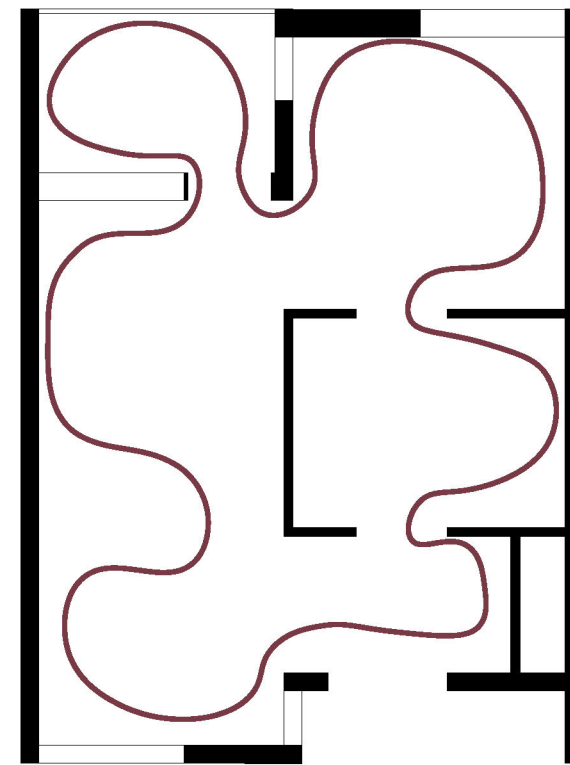
# APARTMENT CONCEPTS



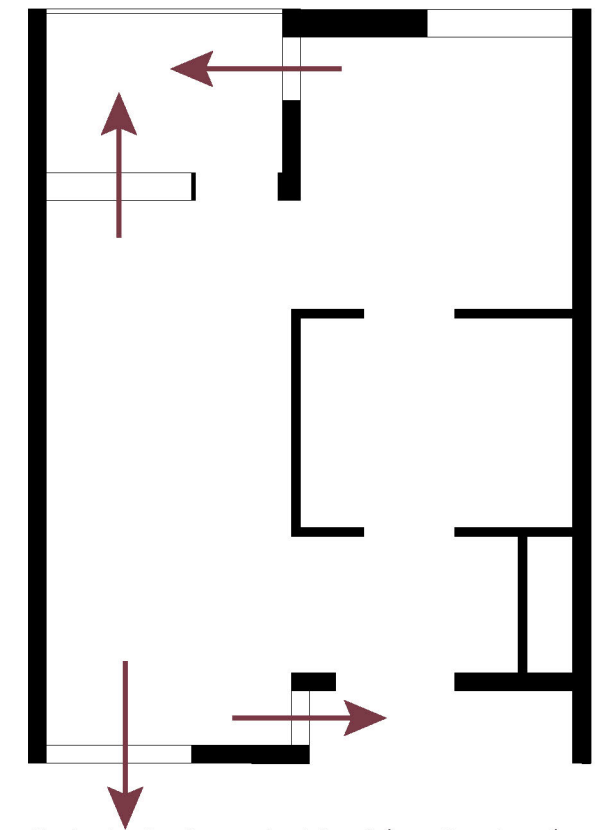
*Wayfinding – simplifying the circulation for the residents.*



*Sightlines – seeing across the room to create better indoor environments.*



*Zones – having clear rooms in an open space to achieve a homelike feeling.*

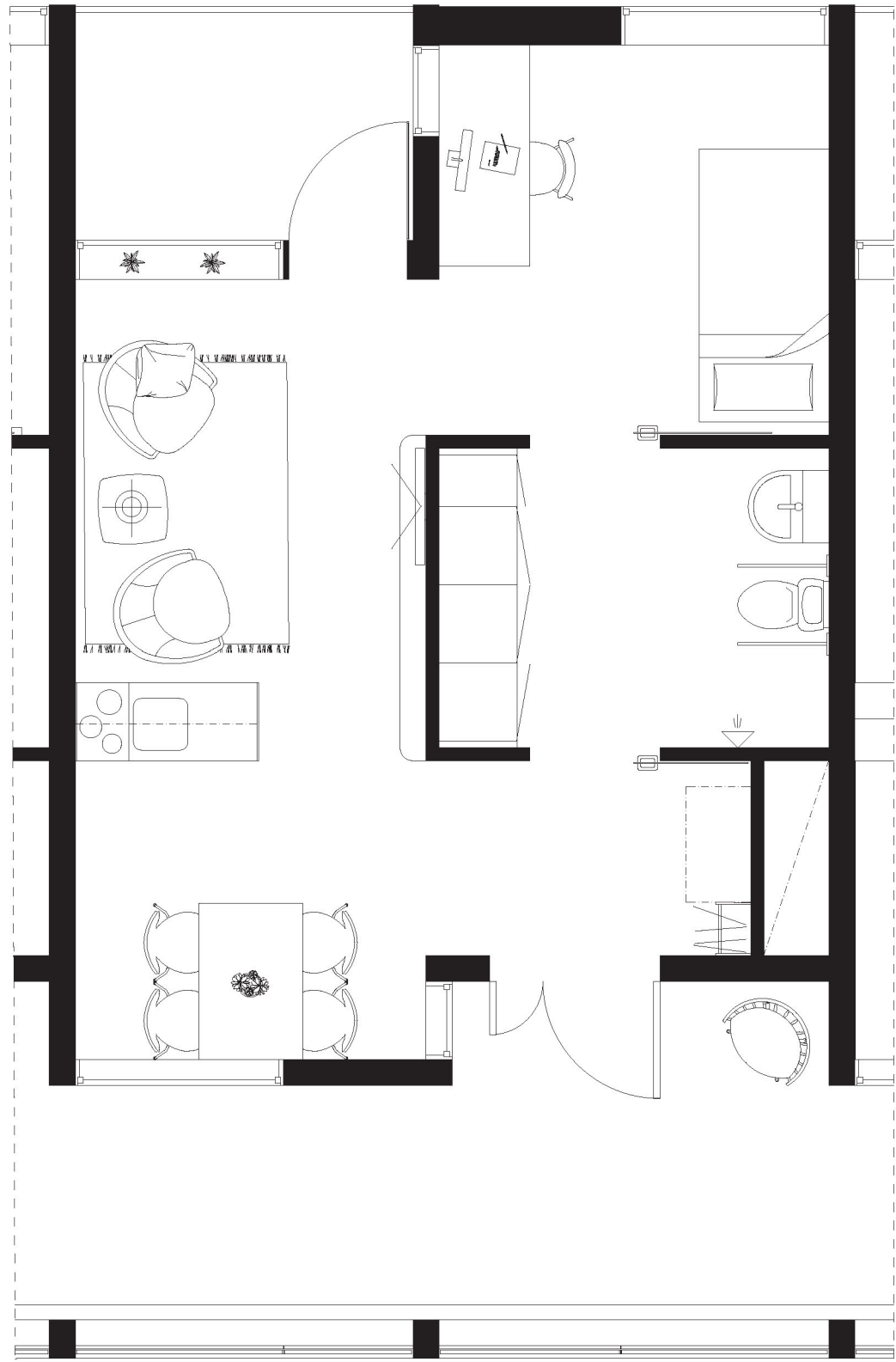


*Outlook – having outlook in all four directions for variation and wayfinding.*

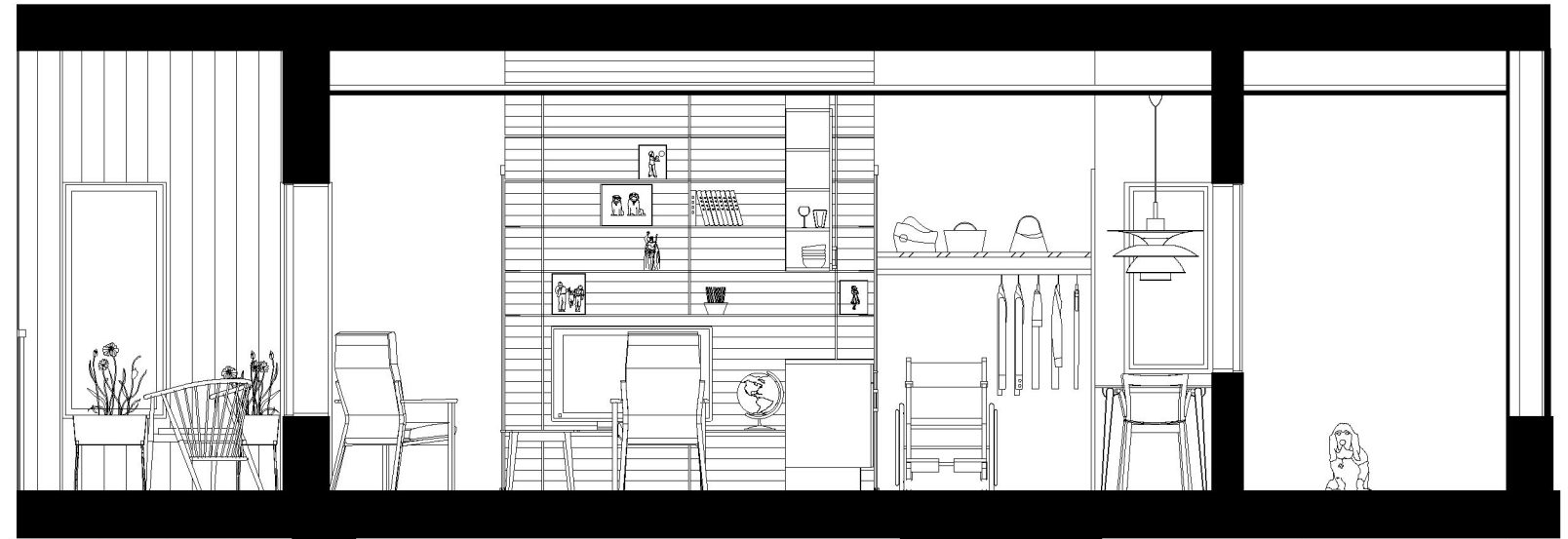


# SINGLE APARTMENT 36m<sup>2</sup>

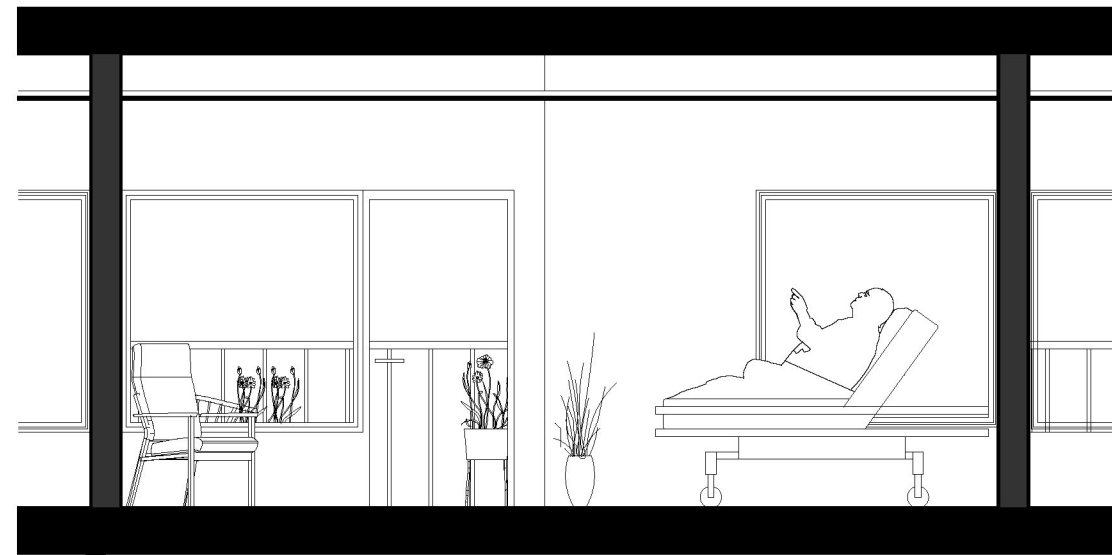
1:50



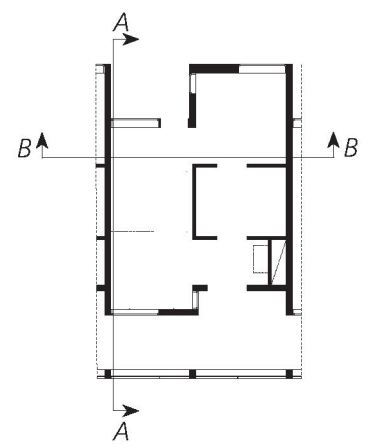
Plan 1:50



A-A Section 1:50

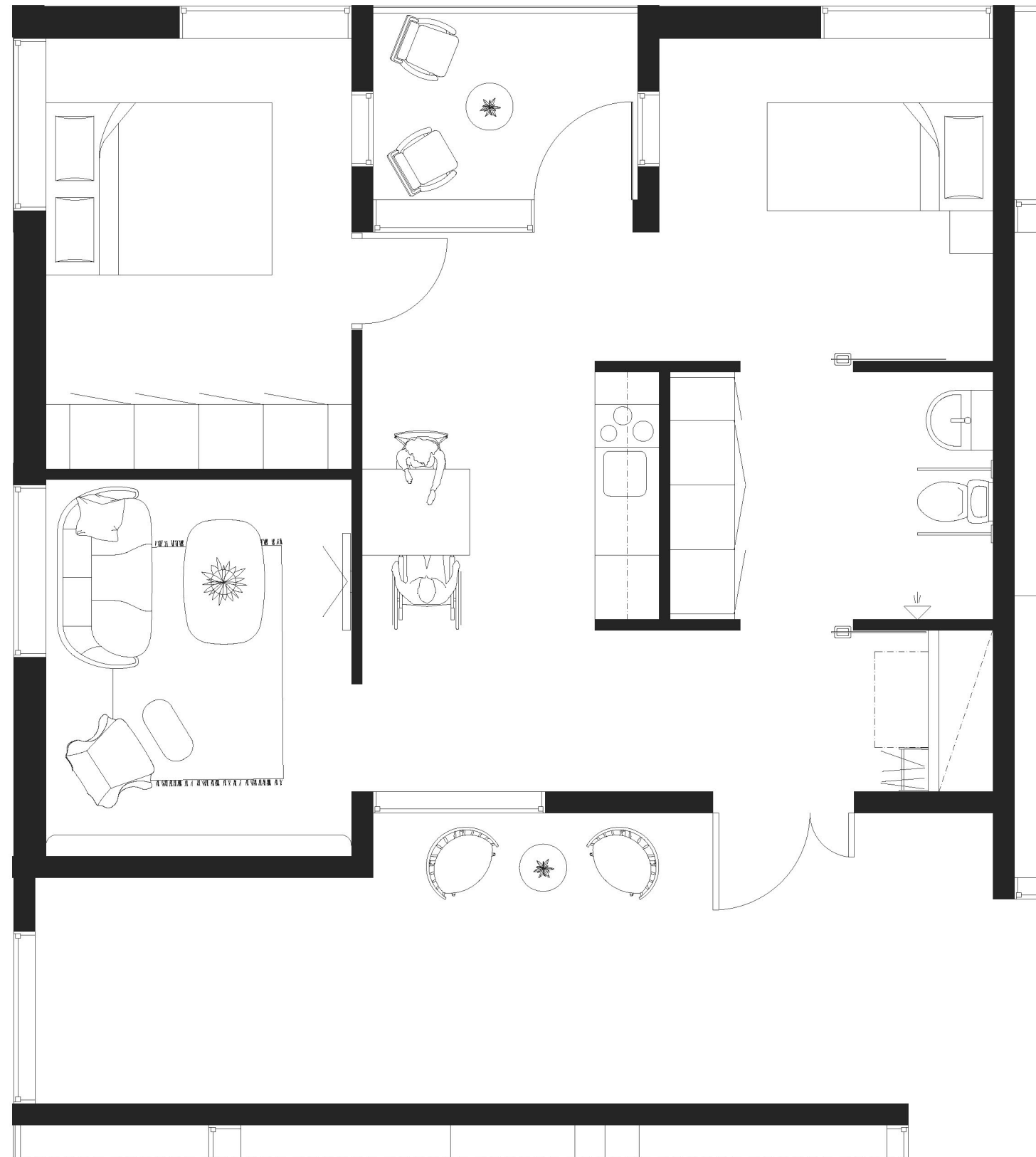


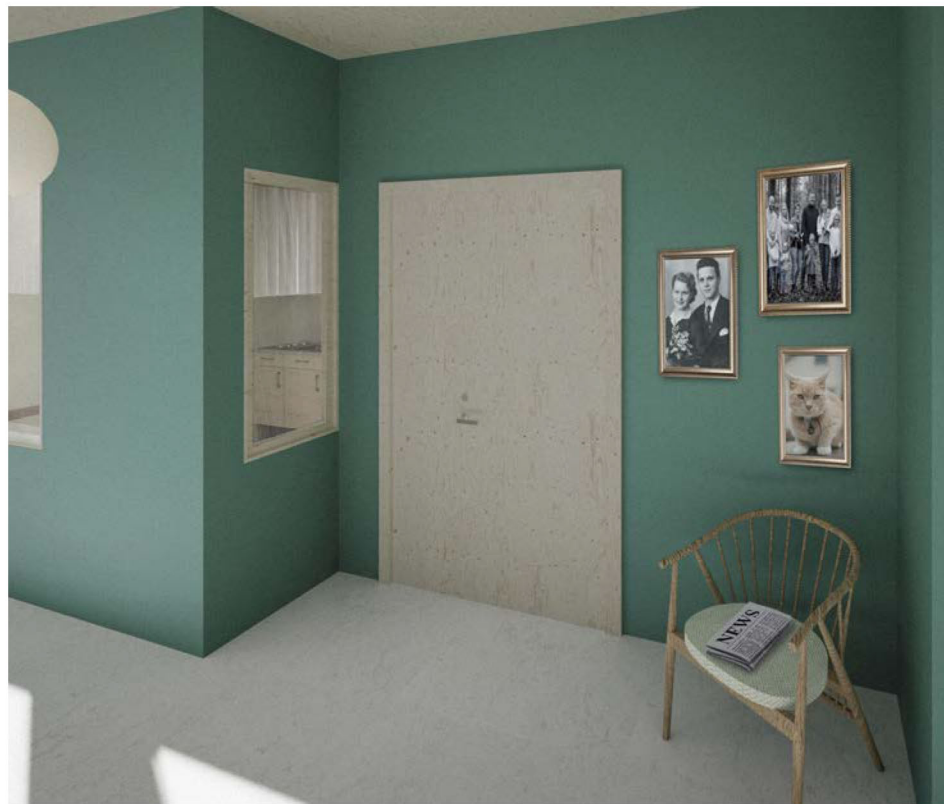
B-B Section 1:50



# COUPLE APARTMENT 56 m<sup>2</sup>

1:50





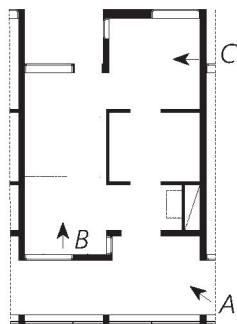
A. Personalized entrance



B. Apartment kitchen and livingroom



C. Views from the bed



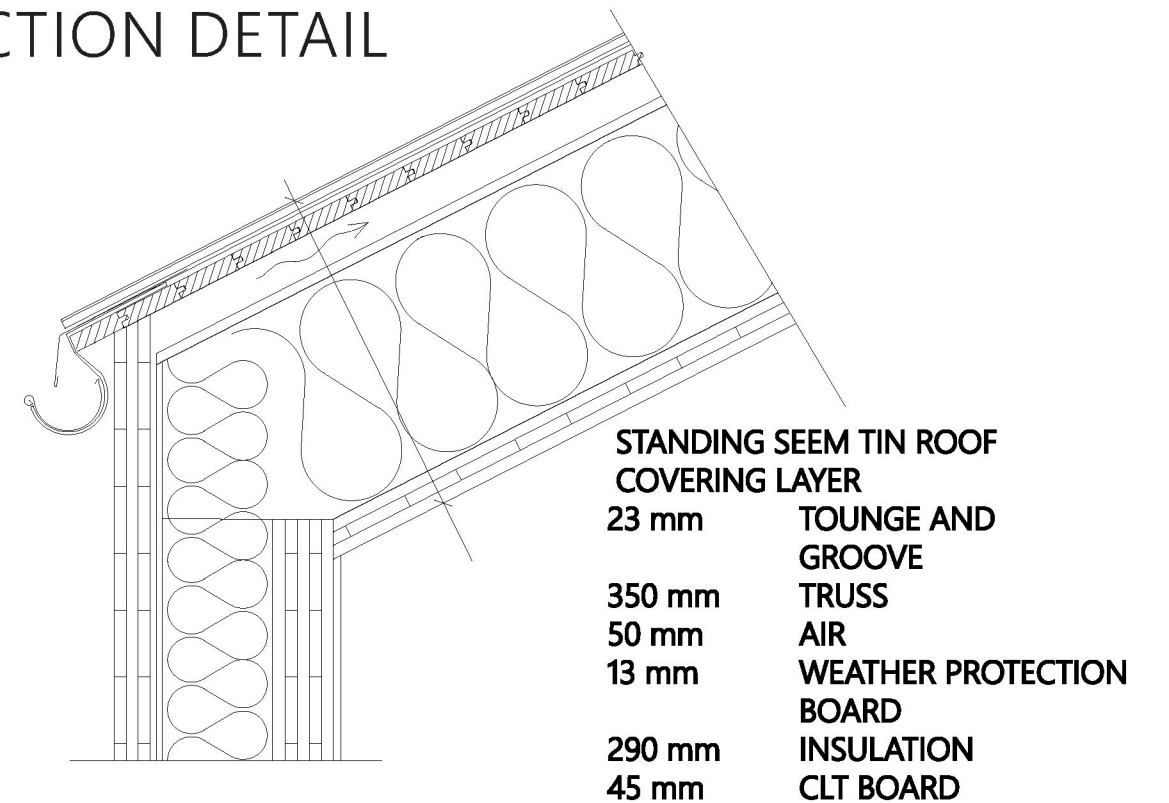
# FACADE ILLUSTRATION

1:50



# CONSTRUCTION DETAIL

1:10



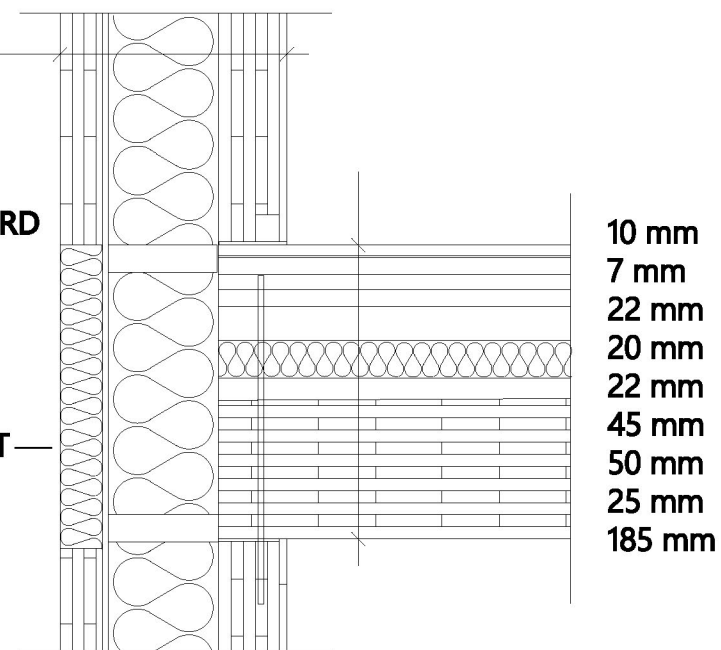
**45 mm**  
**10 mm**  
**7 mm**

**CLT BOARD**  
**AIR LAYER**  
**WEATHER PROTECTION BOARD**  
**INSULATION**  
**CLT BOARD**  
**GYPSUM**

**145 mm**  
**80 mm**  
**13 mm**

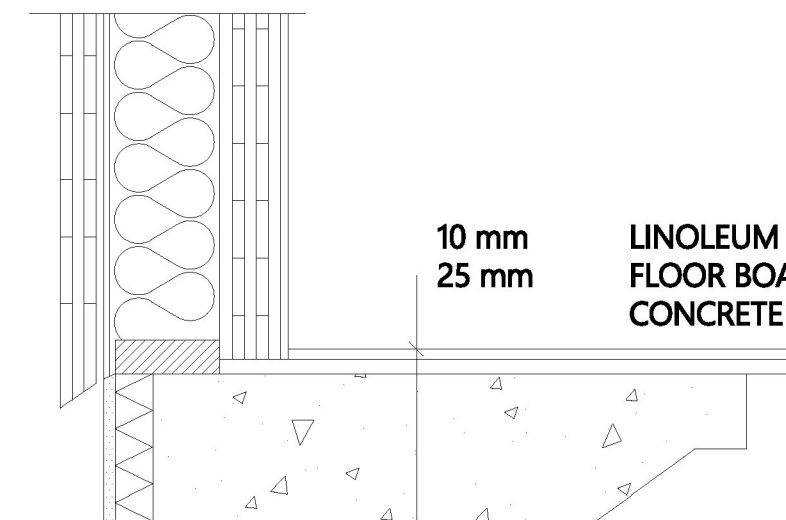
**TIN SHEET**

**10 mm** **LINOLEUM FLOOR**  
**7 mm** **FOAM**  
**22 mm** **FLOOR BOARD**  
**20 mm** **IMPACT SOUND MAT**  
**22 mm** **FLOOR BOARD**  
**45 mm** **FLOOR JOIST**  
**50 mm** **INSULATION**  
**25 mm** **SYLODYN BOARD**  
**185 mm** **CLT BOARD**



**10 mm**  
**25 mm**

**LINOLEUM FLOOR**  
**FLOOR BOARD**  
**CONCRETE SLAB**



# FACADES

1:300



East



East



North



West



West



South

Linnea Nykvist - Meyav Sandy - Sandra Andersson  
Residendital healthcare AUT 164  
Lost Together

0 5 10 m 21



Perspective from the conservatory.

