



Karin Hammarlund Samskapet AB

# Infrastructure in the landscape

# Content



Background



Participation



Method



Example



Conclusions



# ▶ The European Landscape Convention

- The ELC defines landscape as: “An area as perceived by people, whose character is the result of the action and interaction of natural and/or human factors”. (Council of Europe 2000)





## ▸ Sustainable wind power development

- January, 2021, the Swedish Environmental Protection Agency and the Swedish Energy Agency presented a joint national strategy for a sustainable wind power development.
- The strategy emphasizes the importance of **improved consensus**, predictability and legal certainty in the expansion and development of wind power.



## The Effects of Wind Power on Human Interests

- This updated version of report summarizes, analyzes and evaluates existing international and national research on wind power's impact on human interests.
- The impact of wind power developments on ; human health and illness, financial impacts and activities, as well as **landscapes and research on human participation in the development process.**





## Participation

- The development of wind power as other infrastructure needs to take into account valuable nature, people's living environment and a number of other societal interests.





## Participation

- An important prerequisite for balancing and adding values is the landscape perspective.
- In infrastructural planning we need to move from zoning that focus on the strongest values competing for space
- landscape knowledge and planning data can contribute to making visible the **connection between different values and important contexts in the landscape.**



## Method

- Landscape character analysis (LCA) is a systematic approach to describe and interpret the landscape as a whole
- Landscape character is the recognizable pattern of elements that makes one landscape different from another.
- Variations in geology and soils, landform, land use and vegetation, field boundaries, settlement patterns and building styles, give rise to different landscapes each with its own distinctive character and unique sense of place.
- Landscape analysis hence provide an overview of complex connections and values in the landscape and serve as a basis for dialogue with residents and stakeholders



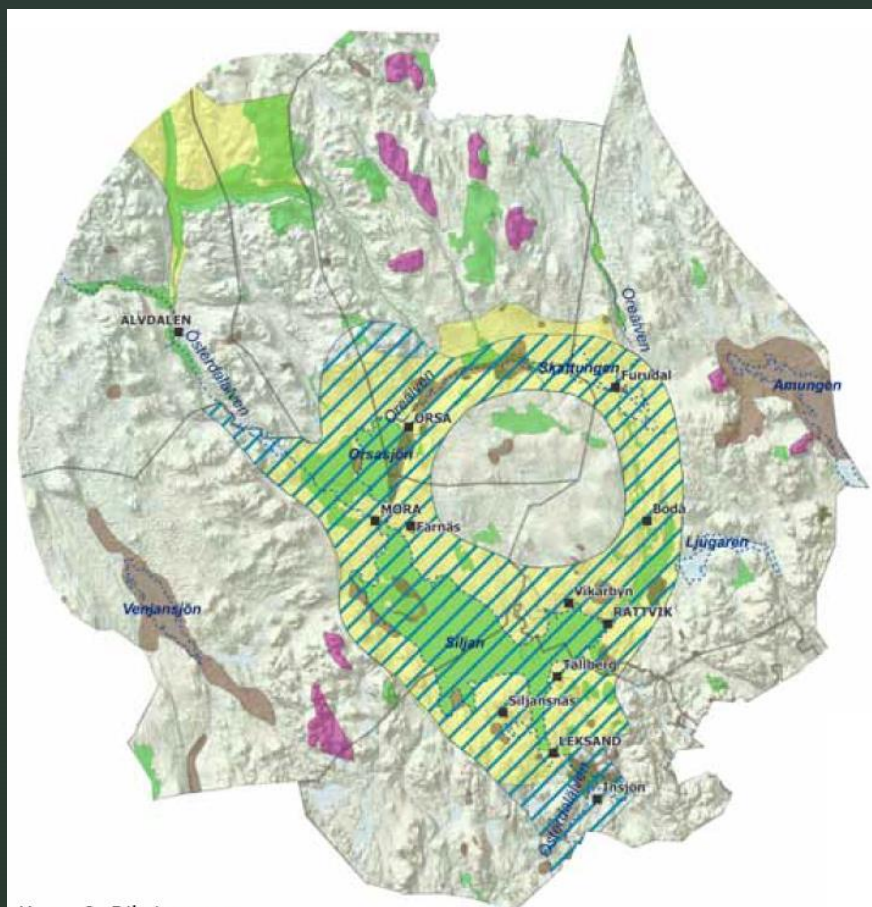


# Example Siljan





# Protected values – sustainable development of landscape?




Karta 2. Riksintressen



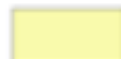

## Teckenförklaring

- Tätorter
- Kommungränser
- ..... Sjöar och älvar

### Riksintressen enligt 4 kap miljöbalken

-  Riksintresset Siljansområdet

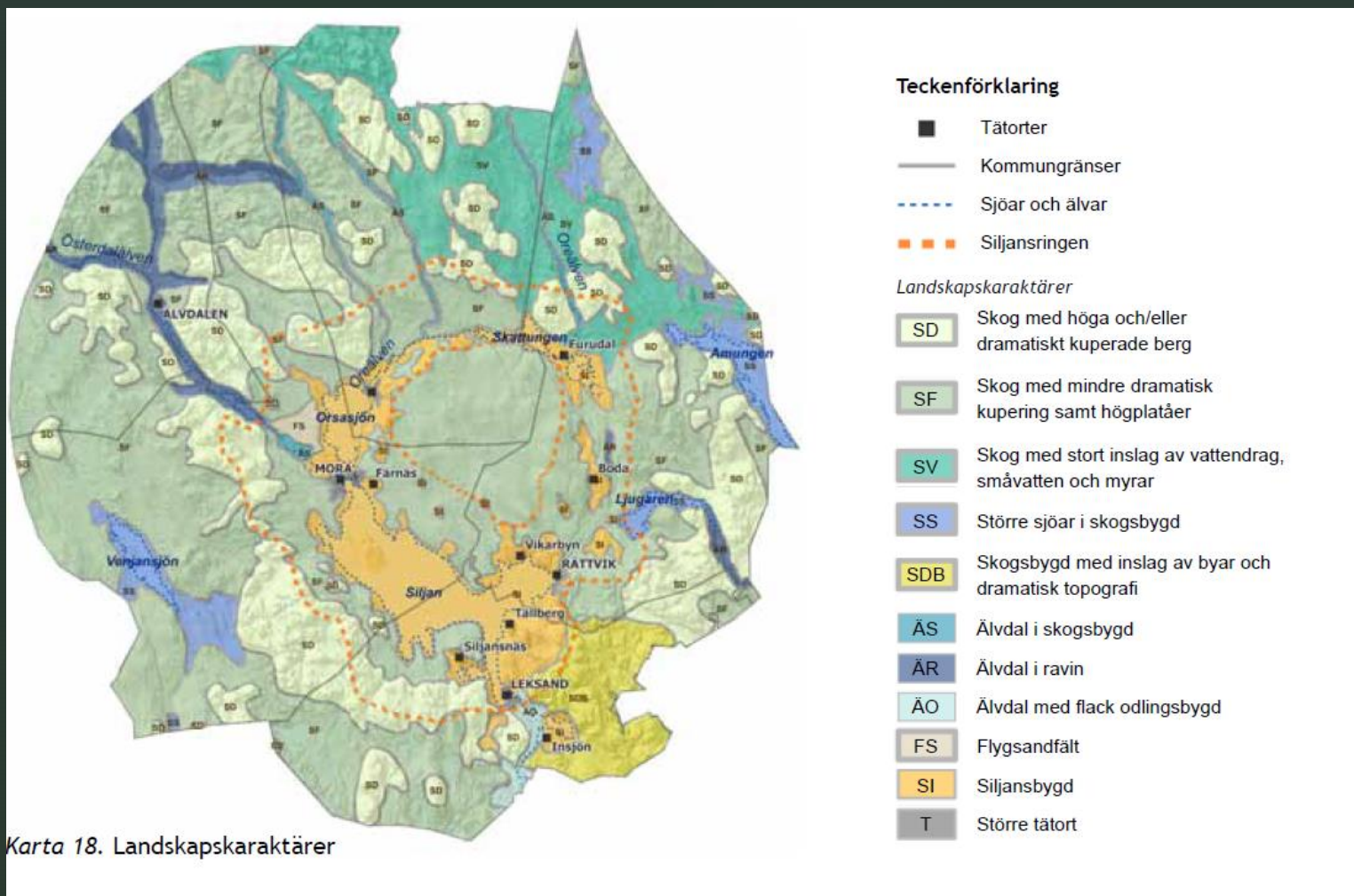
### Riksintressen enligt 3 kap miljöbalken

-  Riksintresse för kulturmiljövård
-  Riksintresse för naturvård
-  Riksintresse för friluftsliv
-  Riksintresse för vindbruk



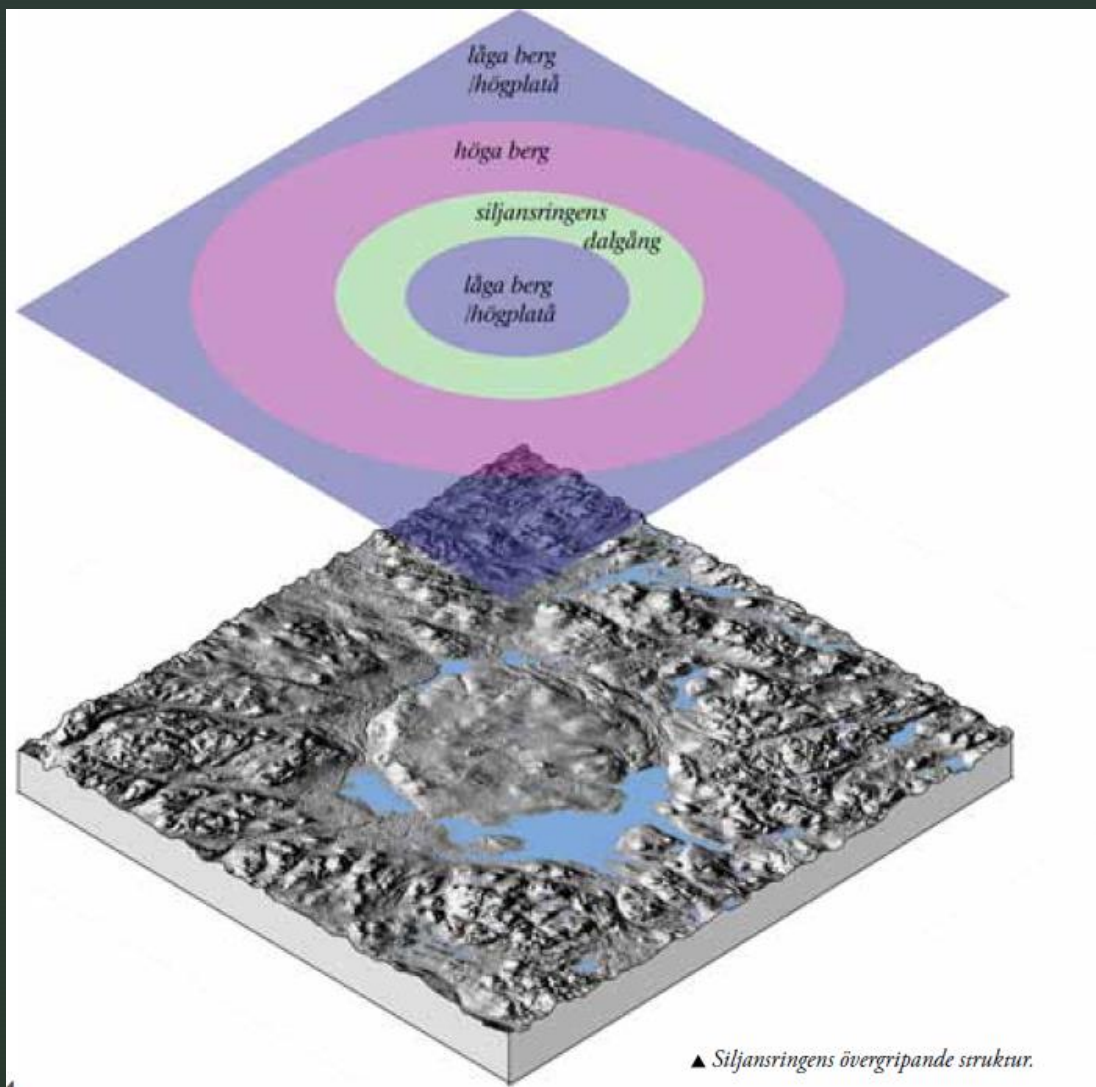


# Character areas





# Geomorphology – landscape structures

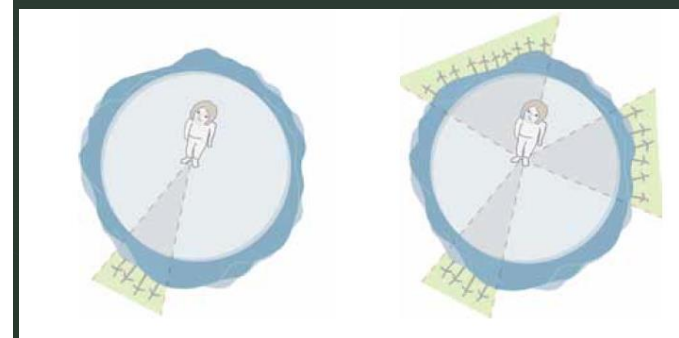
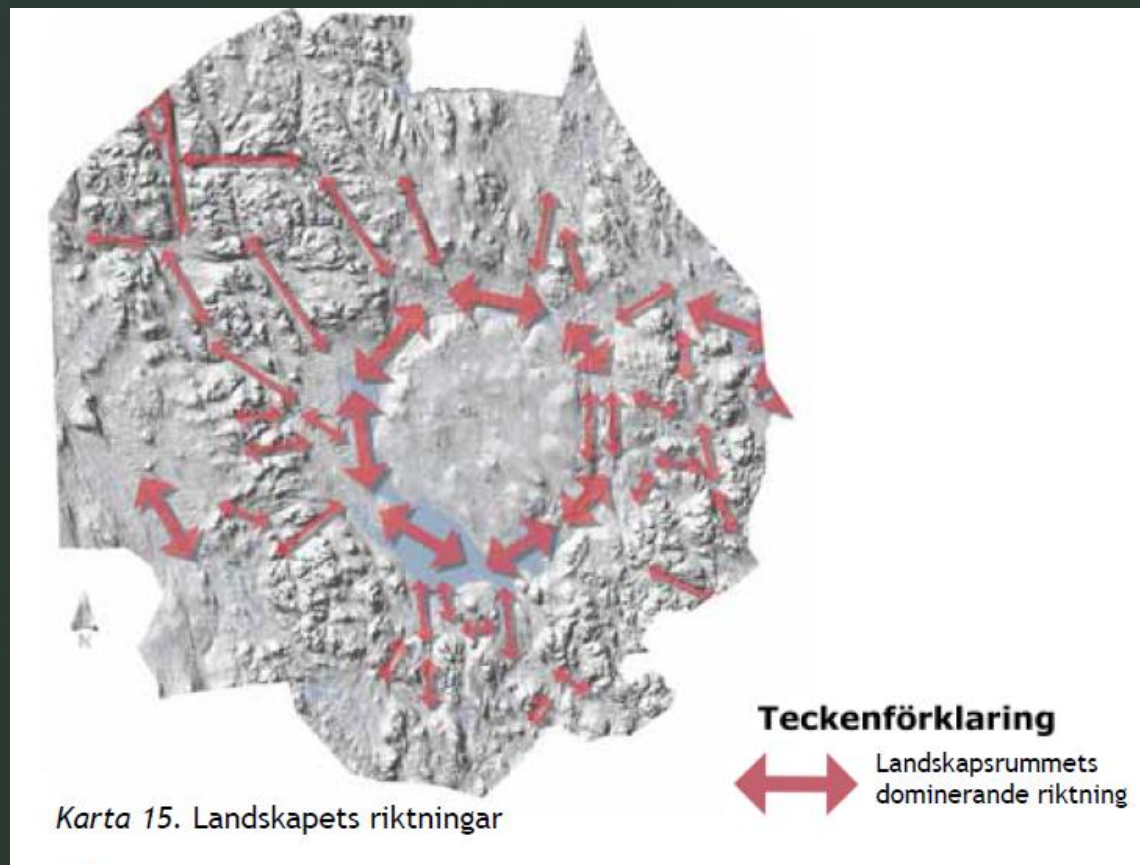


- geomorphologic processes are a balance of forces that result in the varied landforms observed across Earth's surface; tectonic forces, fluvial processes, mass wasting and human activity

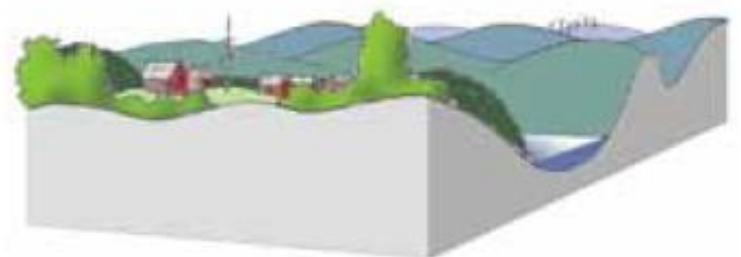
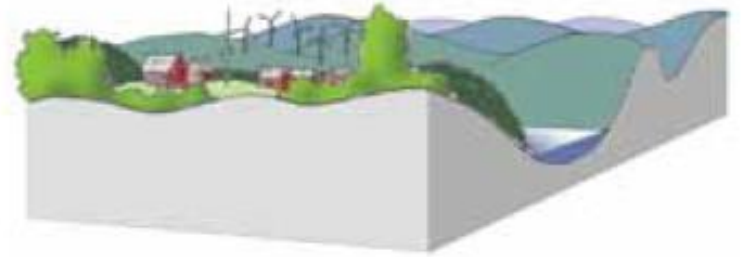
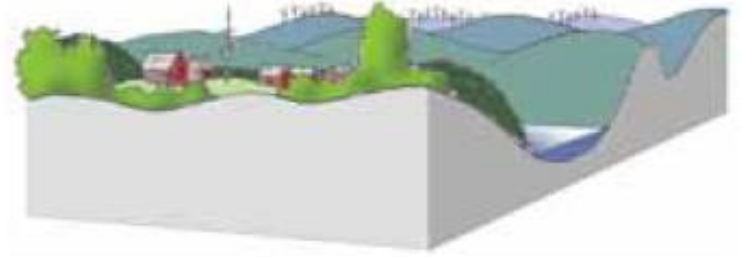
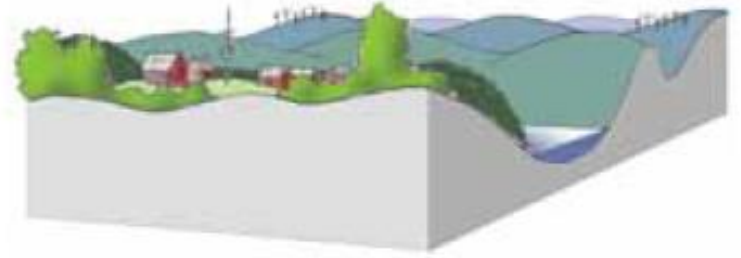
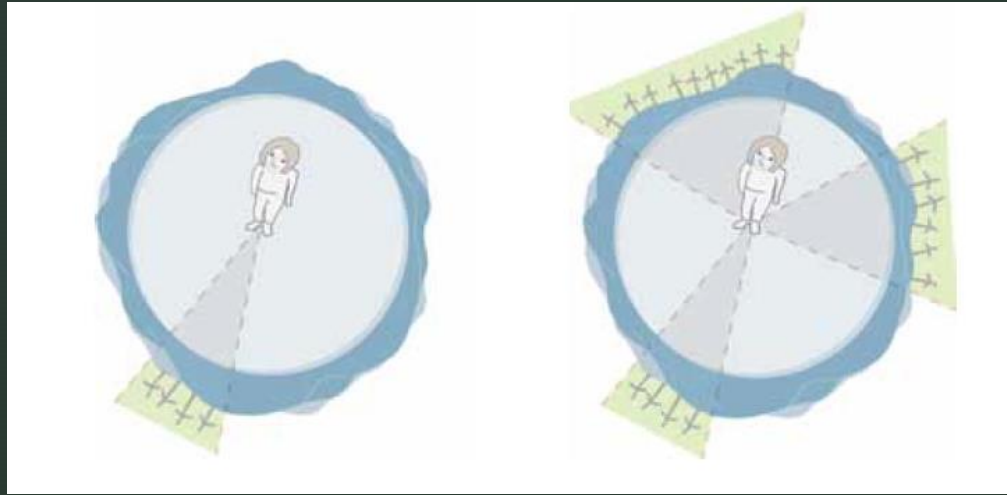




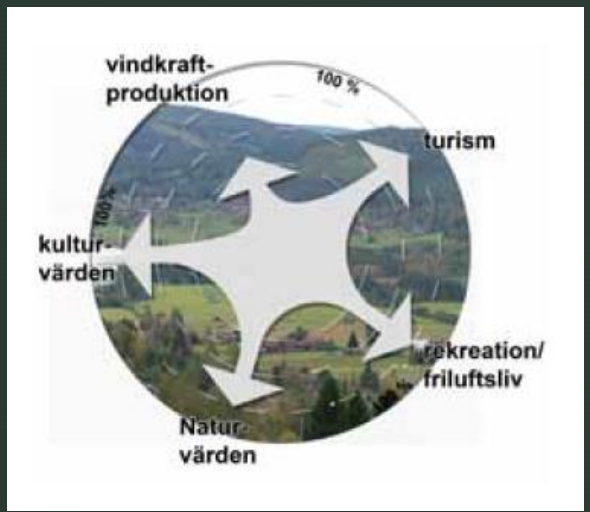
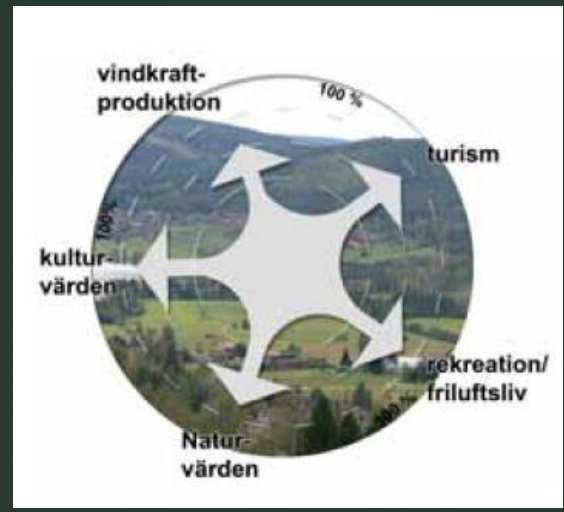
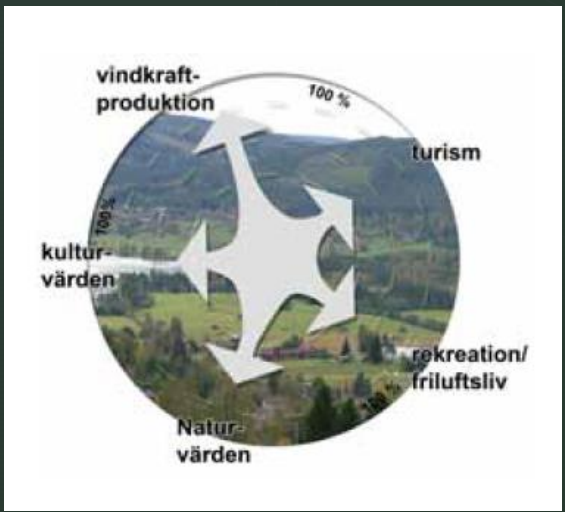
# Geomorphology – landscape structures



# Strategies



# Sustainable development – balancing the cumulative effects!





## Conclusions

- There is a need for **planning methods** that inform cumulative landscape effects, landscape structures and functions that describe how the landscape is used and perceived





## Conclusions

- The landscape character analysis (LCA) creates a **learning process** for those involved as it produces a general description of the perceived, experienced and used landscape as well as important values and functions and how they interact in the landscape.



## Conclusions

- It is a basis for understanding and **deliberating** what **strategy** creates the best **coo existence and cooperation** between values and functions in the landscape



## Conclusions

- The analysis can be done **in different scales** (region, municipality and specific development) and repeated over time in order to **monitor** how well the strategy works.



Thank You!

