



# HALLONBACKEN

A dementia village in Utby



CHRISTINA DIMITRIADOU, EBBA PALMQVIST, LUDWIG NYLIN

## THE SITE, UTBY

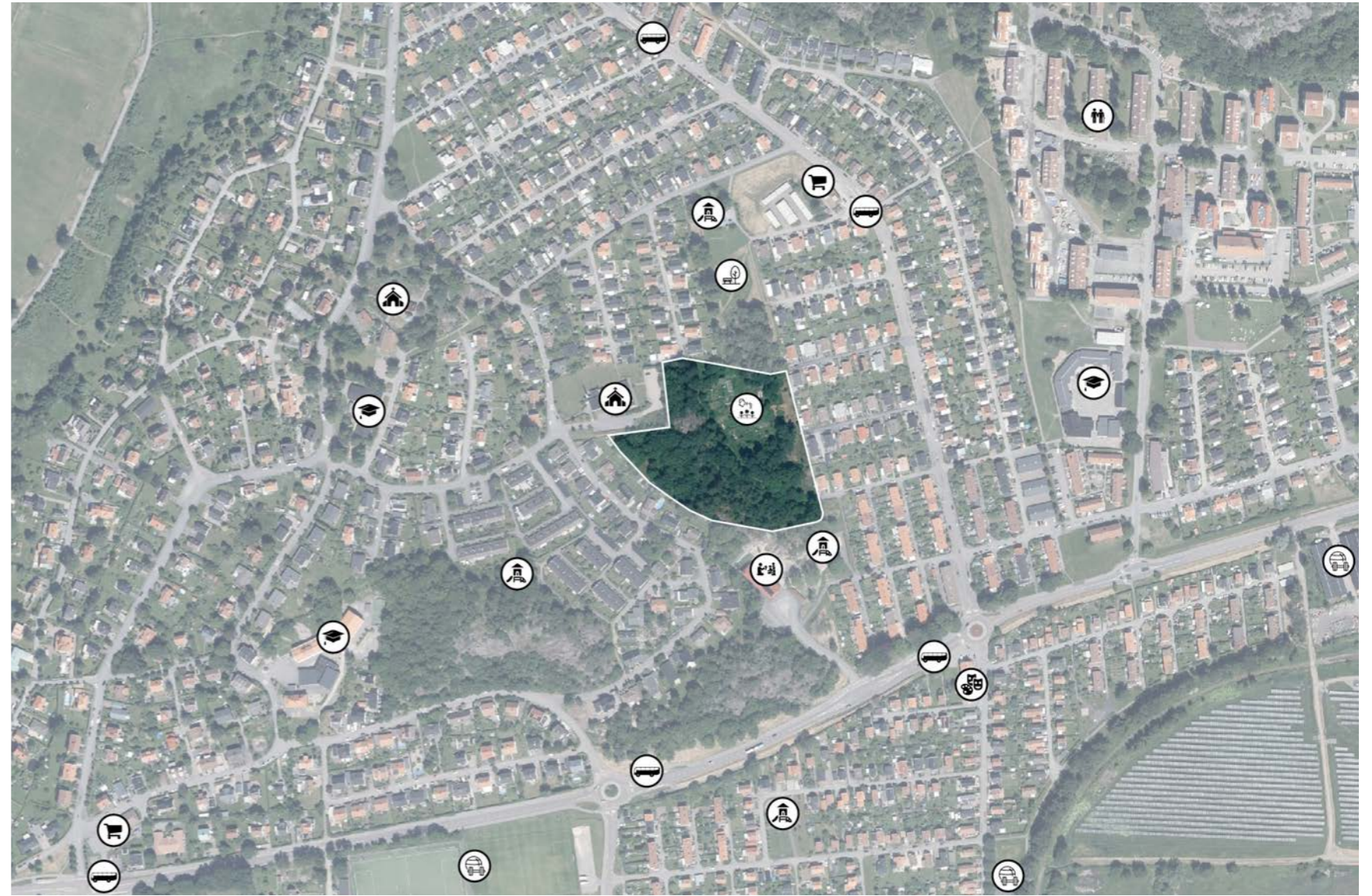
The project site is located in Utby, an area 6 km east of the city centre of Gothenburg. The area has good connections to the city centre.

The plot is located in the middle of a residential area that is characterized by single-family houses and two-storey buildings. It is a beautiful place surrounded by a lot of nature. In the vicinity of the plot there is, among other things, a local shop, school, preschool, churches and playgrounds. The plot has a challenging topography with height differences of up to 20 meters. This also means that there are nice vantage points that strengthen the connection with nature. On the plot there is also currently an allotment garden, which act as a gathering point for the residents in the local community.

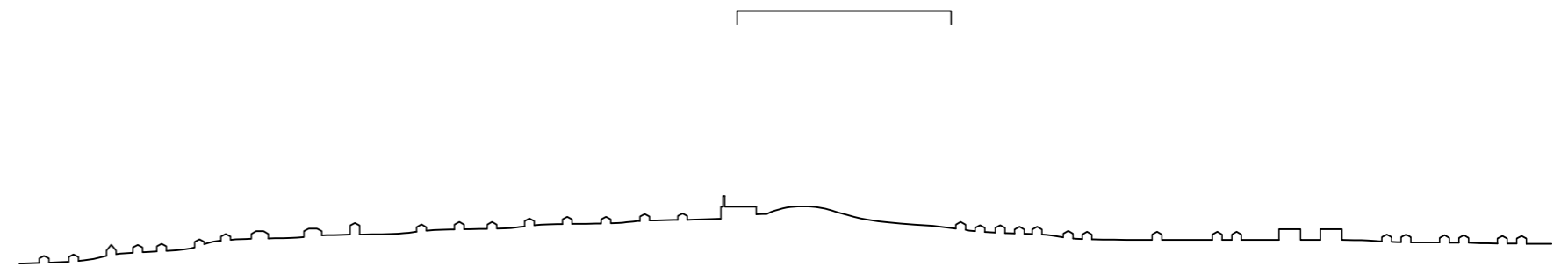
## DEMENTIA VILLAGE

The purpose of the dementia village is to create a living situation where the resident feels the independence of having their own home and being able to move freely within the village, but at the same time receive the daily help that's needed.

The main goal of the project is to design an assisted living facility in Utby. The focus is on healthcare architecture for elderly people with dementia. The program proposes a structure for approximately 80 residents with areas for staff, technology and essential functions.



NEARBY FUNCTIONS



SECTION THROUGH THE AREA

# CONCEPT

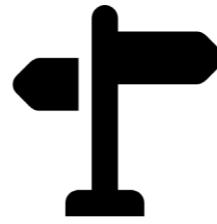
## SENSES



Nature  
Homey feeling  
Natural material

The most prevalent symptom of dementia is short term memory loss and that makes the present very important, and the present is experienced with the senses. In the project this is achieved by creating a homey environment with close connection to nature.

## ORIENTATION



Accessible paths  
Clear destinations  
Continuous movement

Short term memory loss makes it difficult to both plan ahead and to recognize ones environment. To counteract this, its important to make sure to create destinations and visual connections, as well as avoiding dead ends with looped and accessible paths.

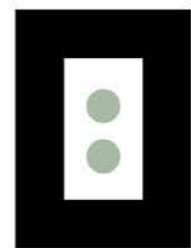
## ENGAGING



Social opportunities  
Activity opportunities  
Part of broader community

Even though the experience of a social interaction may not stay in the memory, it is a core value for well-being. A broad range of different everyday activities, social opportunities and being a part of the wider community are given.

## DESIGN PROCESS



Typology of the unit



Placement of the units



Adapt to the environment



Circular connection



SITE PLAN, 1:1000

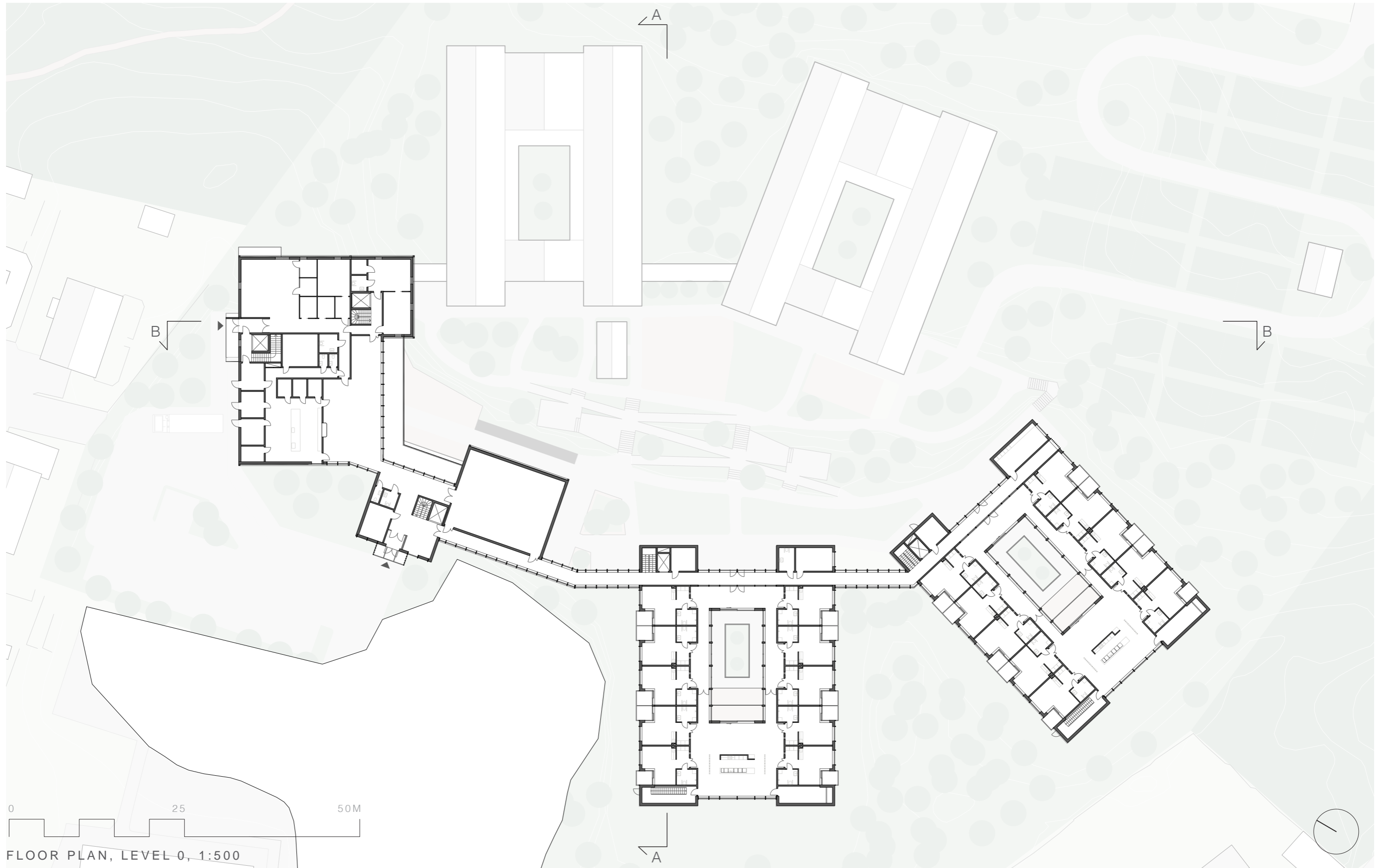
## THE BUILDINGS

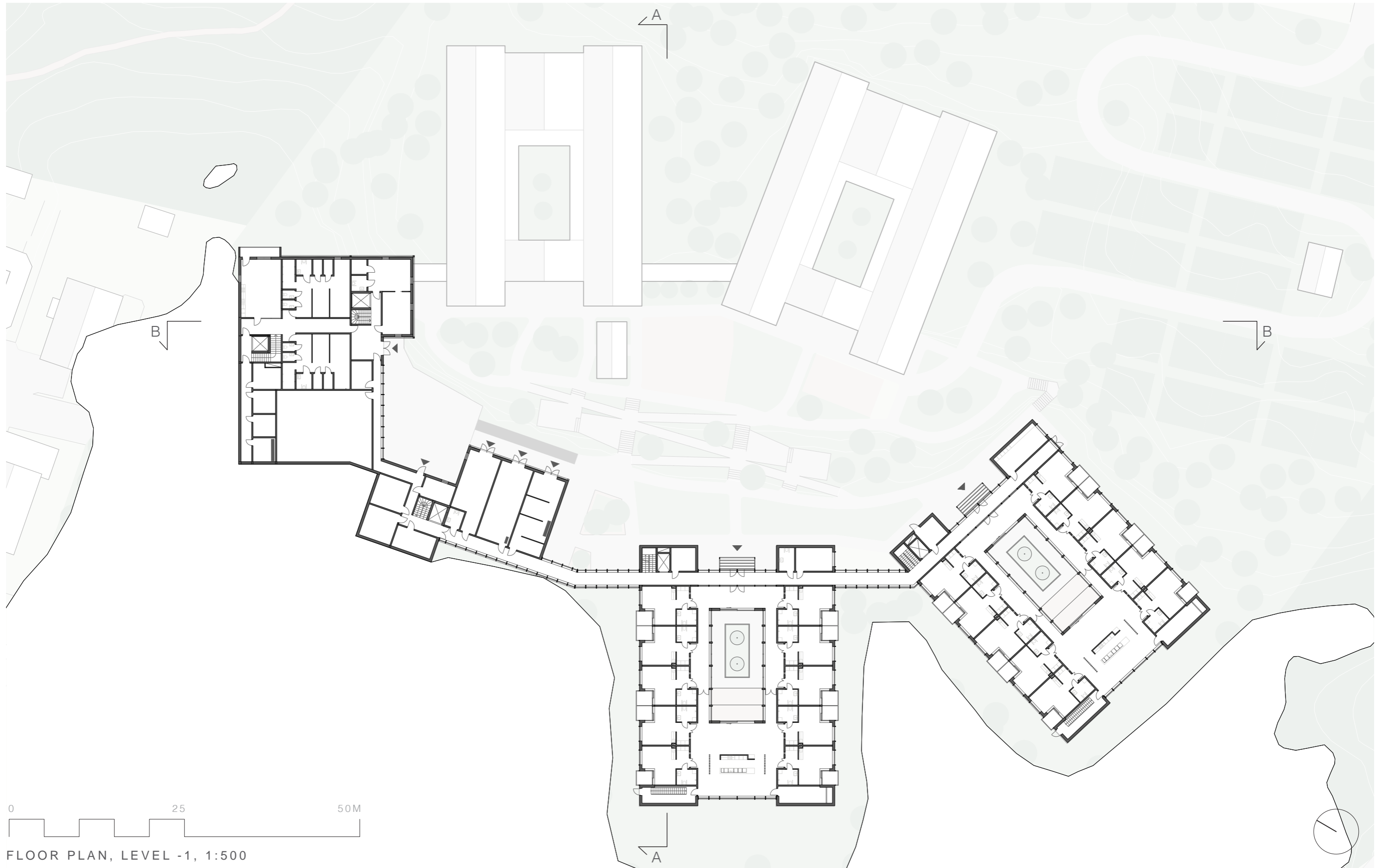
Hallonbacken contains various building volumes, which should strengthen the feeling of a village and therefore feel homely. The building volumes are carefully placed in relation to the topography, embracing the central courtyard. The entrance to the building is from the west side of the plot. There is no reception, as the aim was to avoid the institutional feeling and choose a friendly and welcoming environment. The staff has a separate entrance in the northern part and vertical communication, which enhances the smooth operation of the village.

The visual connection from each unit to the big courtyard and its surrounding buildings, connects the whole village and creates an invitation to activity and meetings - passive, active, physical and visual. The similarity between the units and their relative angles create an organic, but cohesive impression. The, in relation to each other, rotated volumes also increases the privacy of the apartments, as well as improving the quality of the views to the outdoors.

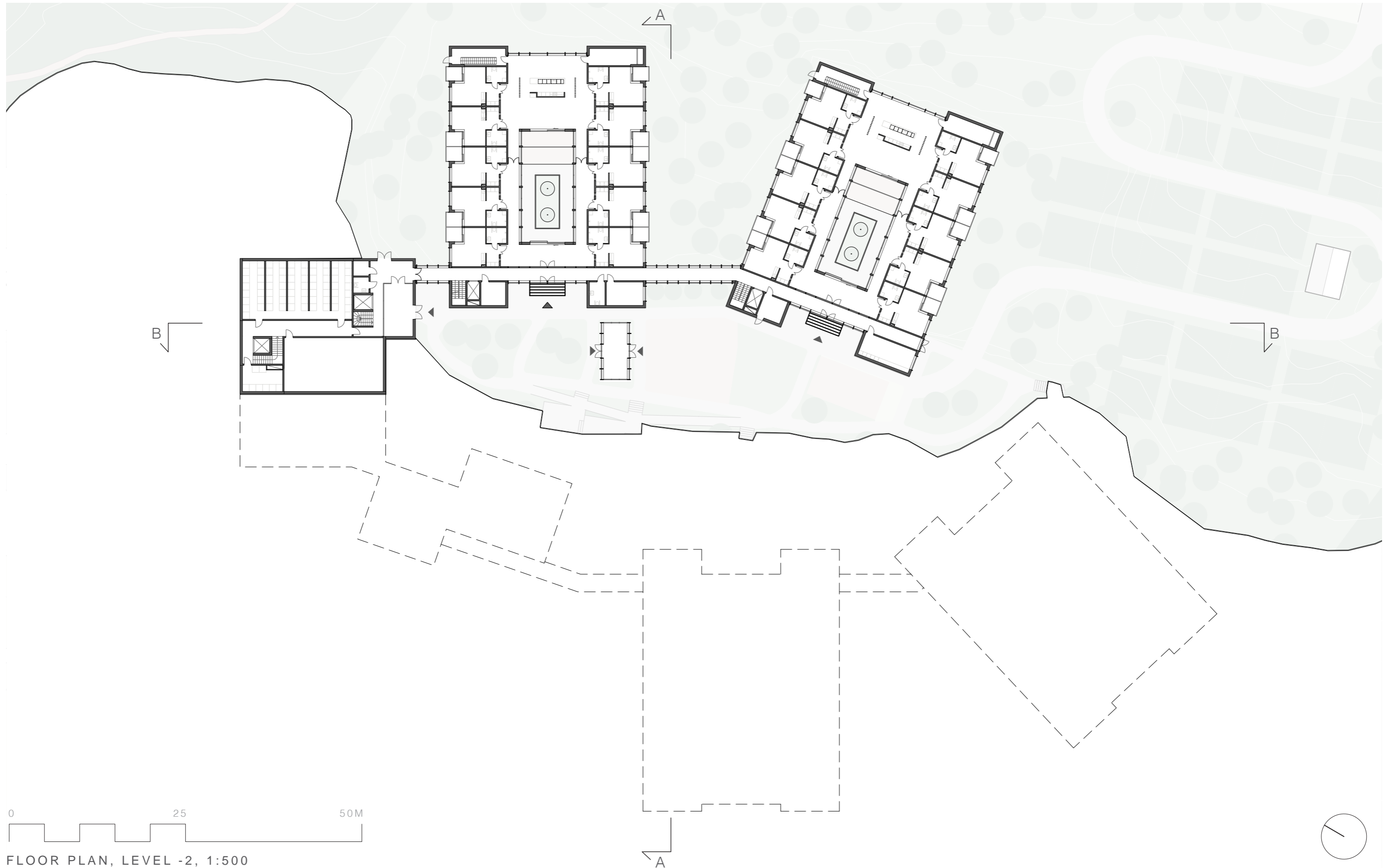
PLOT: 22640 sqm  
 FOOT PRINT: 5240 sqm  
 COREBUILDNING: 2200sqm  
 UNITS: 8 à 760sqm  
 APARTMENTS: 80 à 35sqm  
 COURTYARDS: 3300sqm



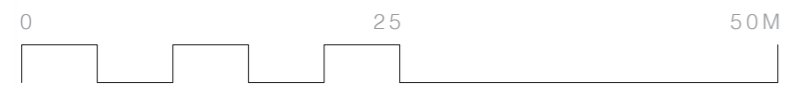
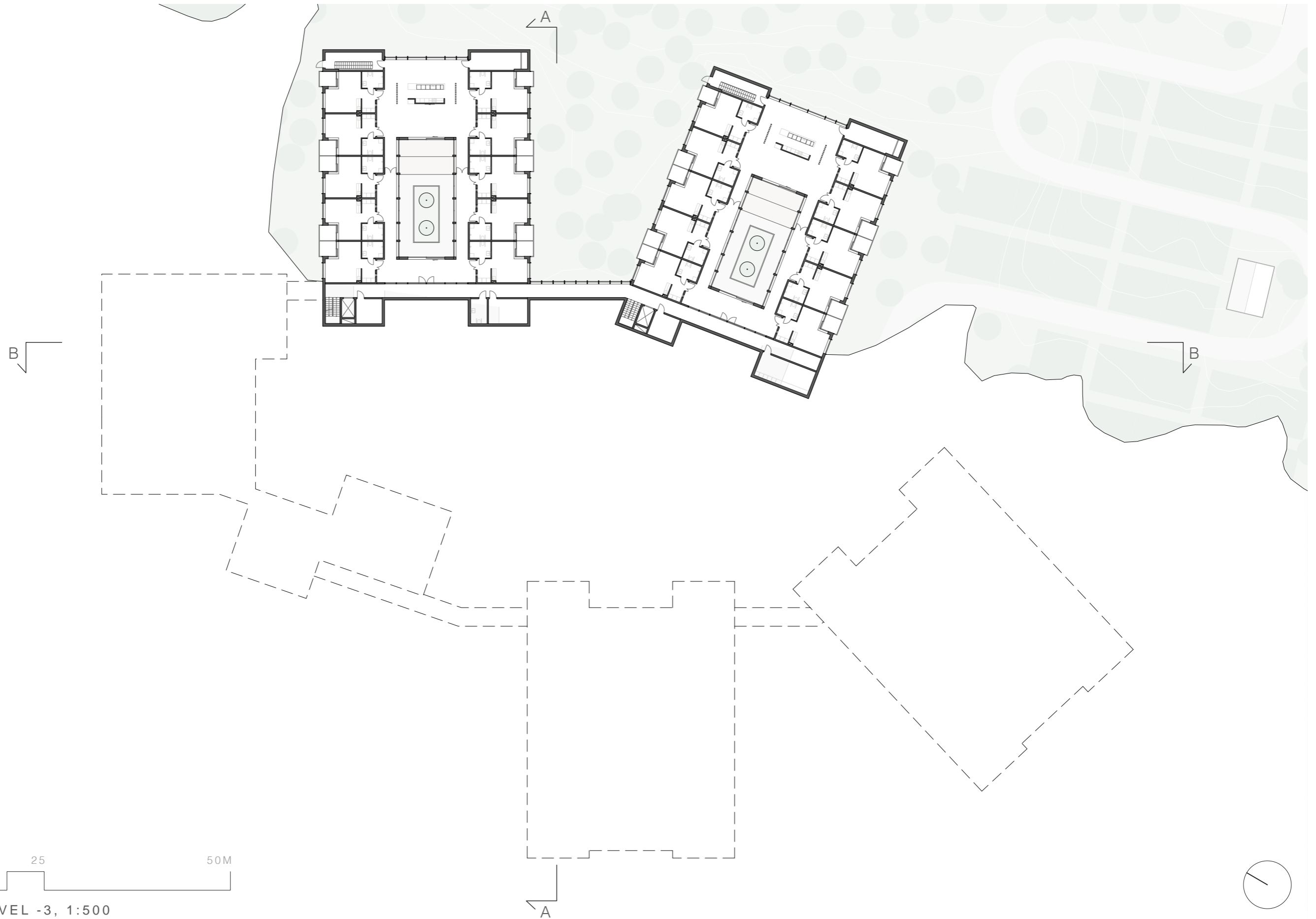




FLOOR PLAN, LEVEL -1, 1:500



FLOOR PLAN, LEVEL -2, 1:500

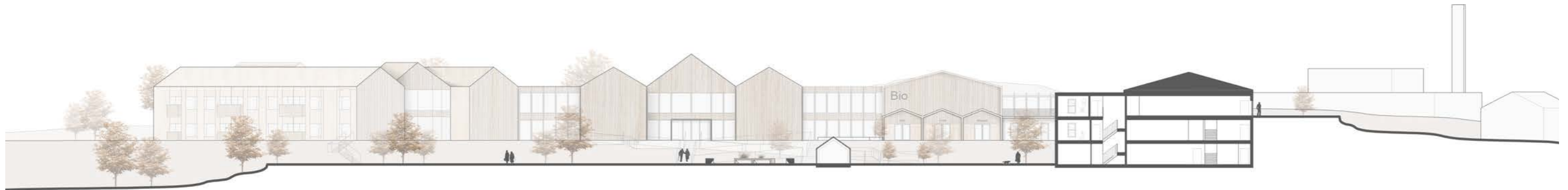


FLOOR PLAN, LEVEL -3, 1:500

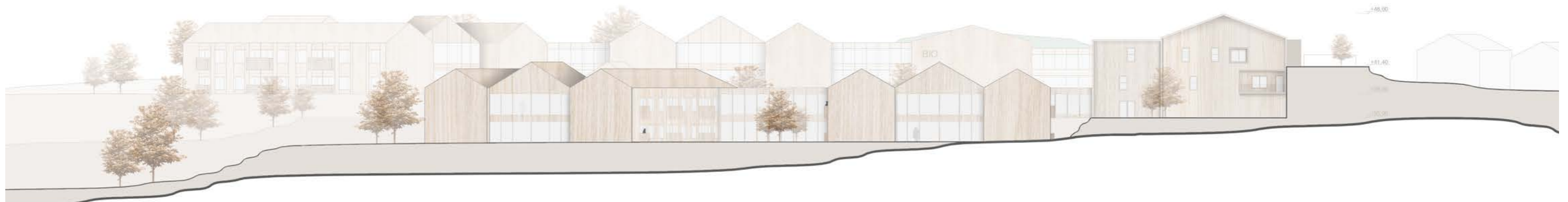




SECTION A-A, 1:500



SECTION B-B, 1:500



ELEVATION EAST, 1:500



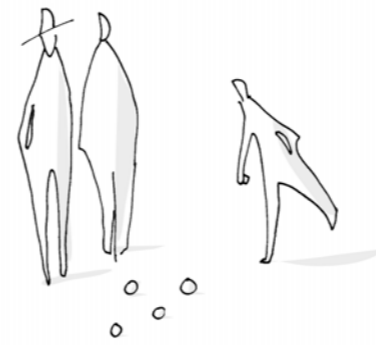
ELEVATION WEST, 1:500



# THE COURTYARD



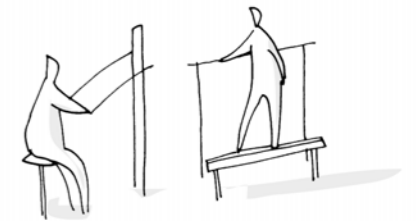
The large central courtyard, to which all buildings are connected, is designed to create a wide variety of activities, sub-spaces and sensuous experiences. The courtyard is divided into two larger flat areas that are connected internally through the core building and externally via a ramp-stair-system that is a part of the natural topography.



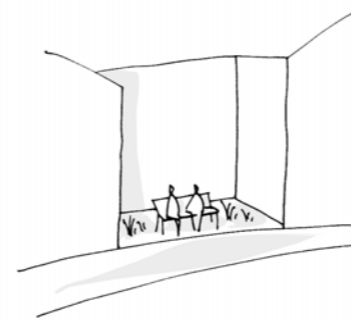
1. BOULE



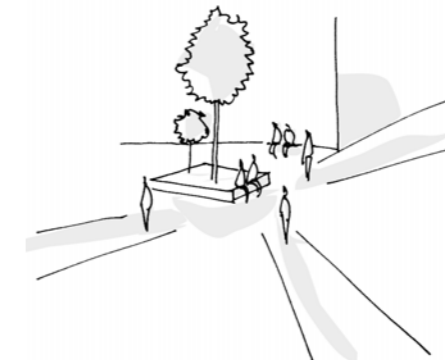
2. GARDENING



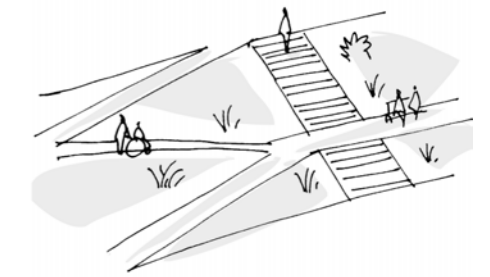
3. EXERCISE



4. NOOKS



5. SQUARE



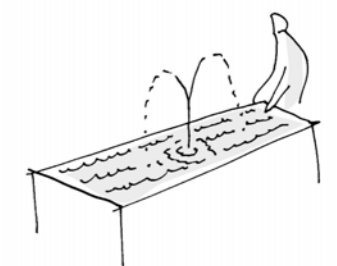
6. RAMPS



7. MEADOWS



8. FOREST



9. FOUNTAIN



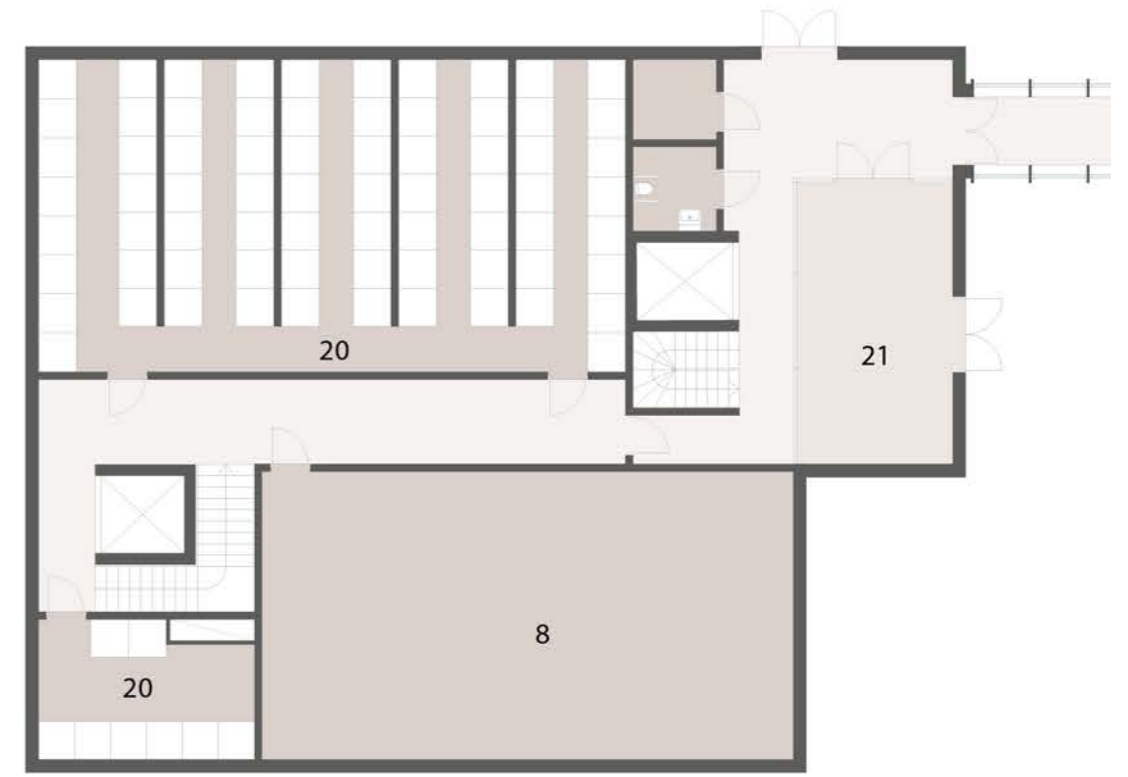
GARDEN

# THE COREBUILDNING



The entrance to the building is from the west side of the plot. As one enters the building, there is a direct connection to the natural landscape and a small guidance foyer. The staff has a separate entrance and vertical communication, which enhances the smooth operation of the village. Two vertical communications open to the public lead to the housing units. Furthermore, the connection to the two dominant public functions, the open restaurant, and the multi-functional hall, is also easily accessible. The aim of this room is to organize group film screenings, events with the preschool and the local community.

1. Entrance for the public
2. Storage of outdoor wheelchairs
3. Multifunctional hall
4. Kitchen
5. Preparation room
6. Delivery
7. Waste room restaurant kitchen
8. Waste room assisted living
9. Dish room
10. Storage
11. Fridge room
12. Freezer room
13. Entrance for the staff
14. Shared office spaces
15. Offices for the managers
16. Conference room
17. Meeting rooms
18. Massage and treatment room
19. Flexiroom
20. Storage
21. Balcony



1. Grocery store
2. Hair salon
3. Libary/activity room
4. Central cleaning
5. General storage
6. Storage/Aid
7. Storage outdoor furniture
8. Ventilation
9. Incoming district heating
10. Incoming electricity
11. Sprinkler room
12. Laundry for staff
13. Dressing room
14. Changing room
15. Staff room
16. Balcony
17. Gym
18. Yoga room
19. Drug room
20. Storage for tenants
21. Indoor gardening room

0 10 20M  
 COREBUILDNING PLAN, LEVEL -1 & -2, 1:200



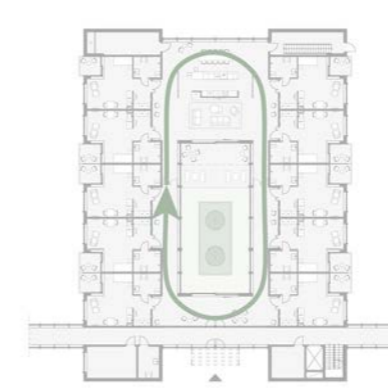
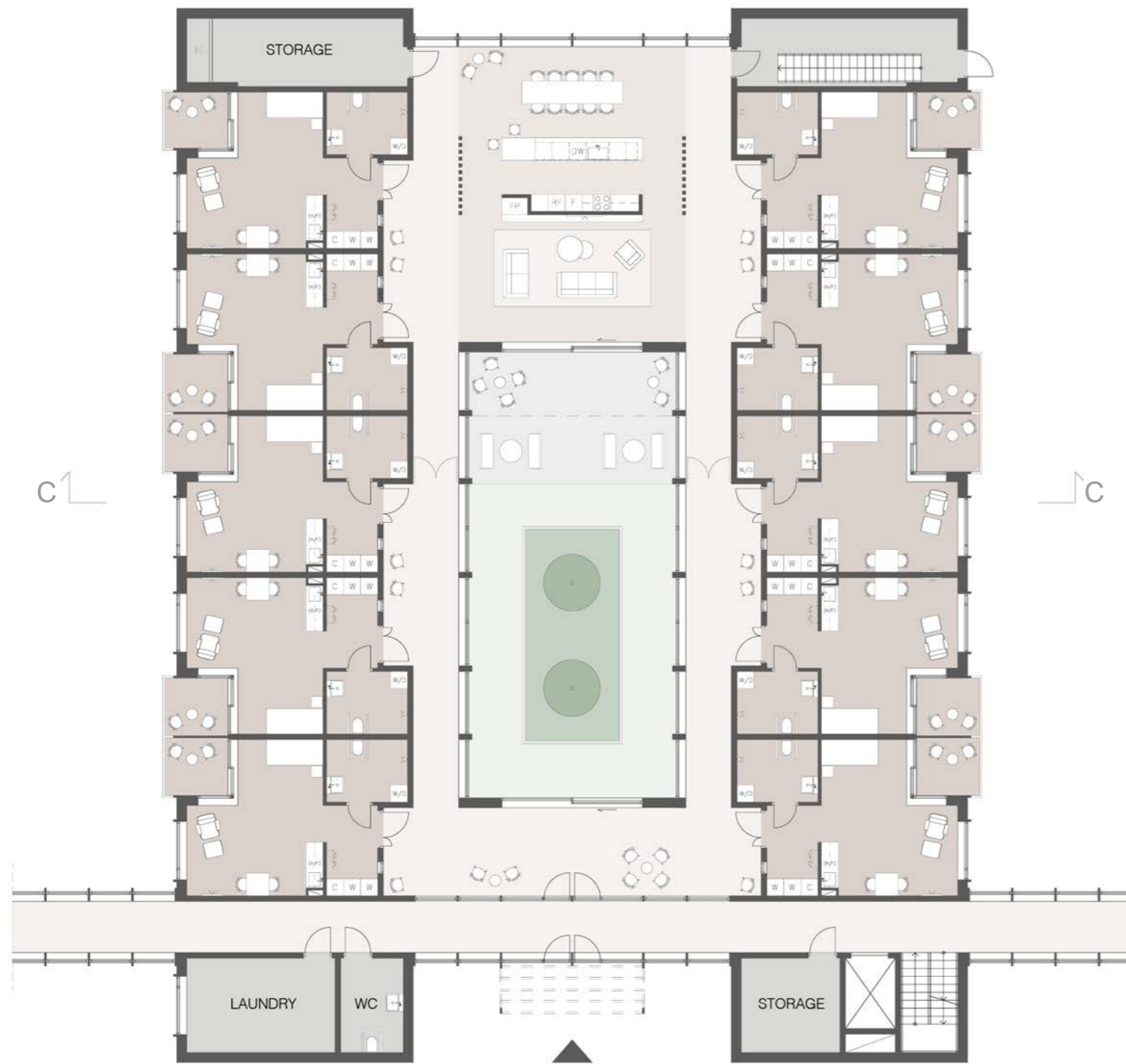
MAIN ENTRANCE



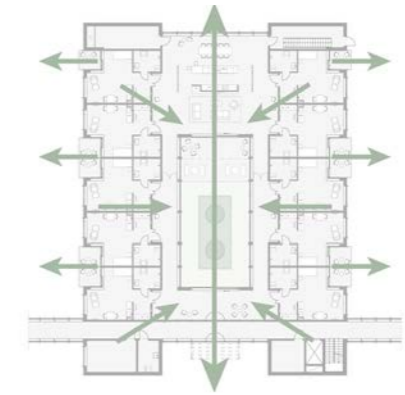
FACADE WEST, 1:200



# THE UNIT

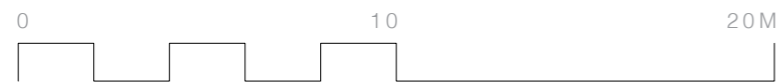


CIRCULAR MOVEMENT



OUTDOOR VIEW

- COMMUNICATION
- APARTMENTS
- SECONDARY FUNCTIONS
- COMMON AREAS
- OUTDOOR AREA



UNIT PLAN, 1:200



UNIT SECTION, C-C, 1:200



UNIT FACADE, 1:200

The private apartments are divided into larger units with 10 residents per unit. The apartments are positioned around a courtyard in order to be in contact with nature at all times. Each unit has a shared kitchen, dining area and living room. These spaces are directly connected to the courtyard where the residents can move freely outside.

The apartments are mirrored and thereby create smaller niches at the entrances. It gives the residents the opportunity to personalize their own entrance to make it more recognizable and help the person with dementia find their home.

The common functions between two units are close but separated from the residents' private area. In this way, the staff can move undisturbed and easy between the units.



UNIT, COURTYARD



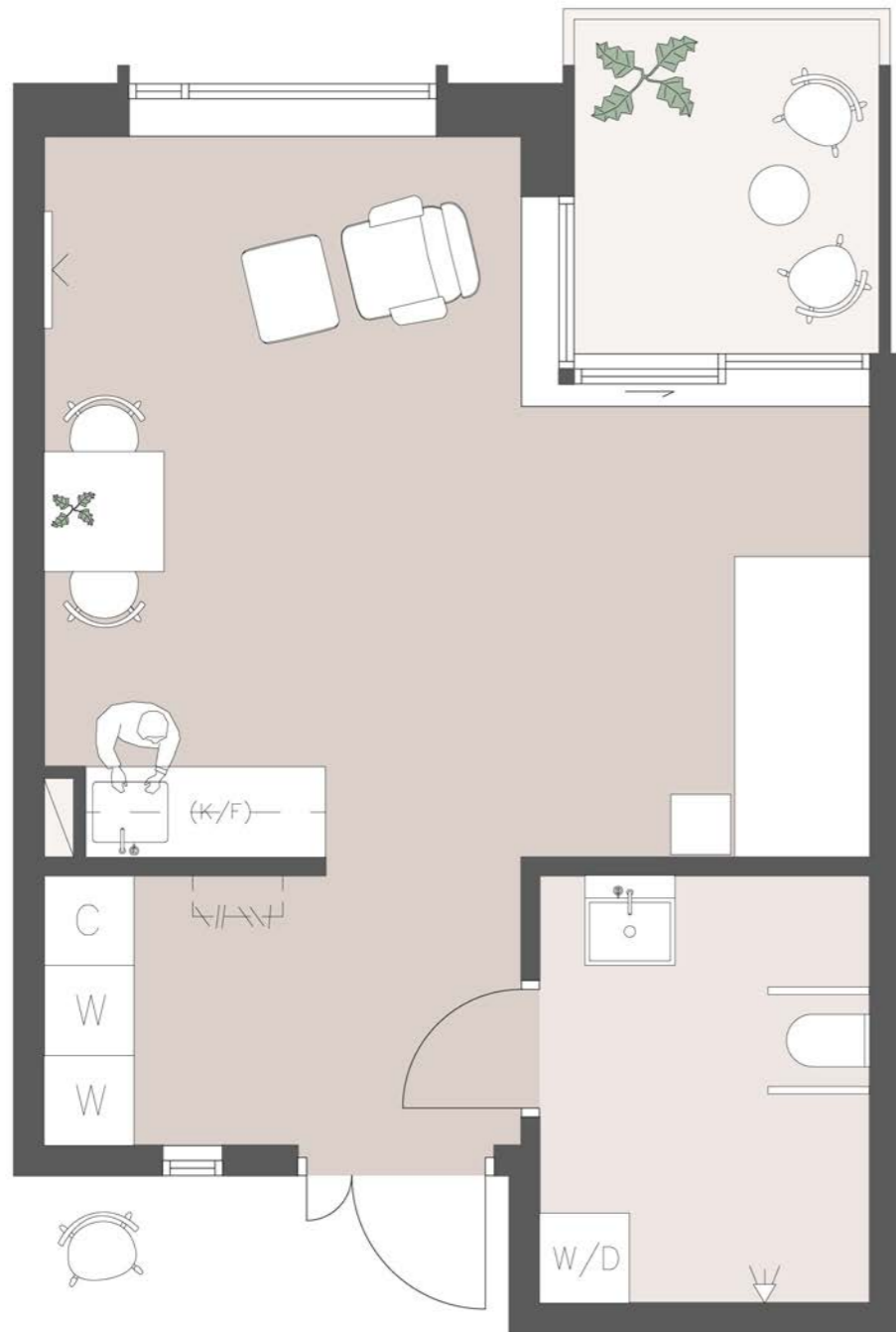


UNIT, KITCHEN

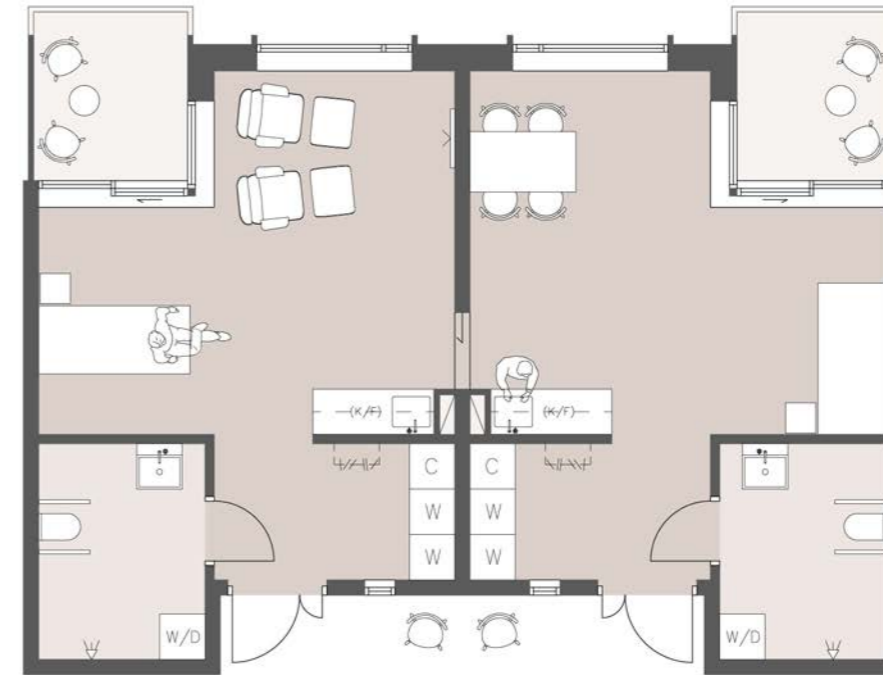


UNIT, LIVING ROOM

# THE APARTMENT



APARTMENT PLAN, 1:200



The apartment is 35 square meters and contains an entrance, a small kitchen, living room, bed area and an accessible bathroom. The private apartment also has a balcony that gives the resident the opportunity to get in close contact with nature outside. It is important that there is a good overview of the entire apartment so that the resident can easily orient itself in its home environment. It must also be possible to be able to see out of the apartment in both directions, by achieving a cross connection between indoors and outdoors.

The room has several furnishing options so that it is optional to change depending on health status or personal preferences. In the wall that separates the apartments, there is the possibility of a sliding door solution so that the residents can have the opportunity to continue living together as a couple or friends.



APARTMENT, VIEW FROM ENTRANCE



APARTMENT, KITCHEN AND ENTRANCE