



Life Gateway Jönköping 2025

Arvid Söderholm, Emily Yang Huang, Jingjing Zheng
Future vision for healthcare architecture, autumn 2015
Department of Architecture at Chalmers University of Technology
Gothenburg, Sweden

Peter Fröst, Examiner
Christine Hammarling, Elke Miedema, Tutors

Study

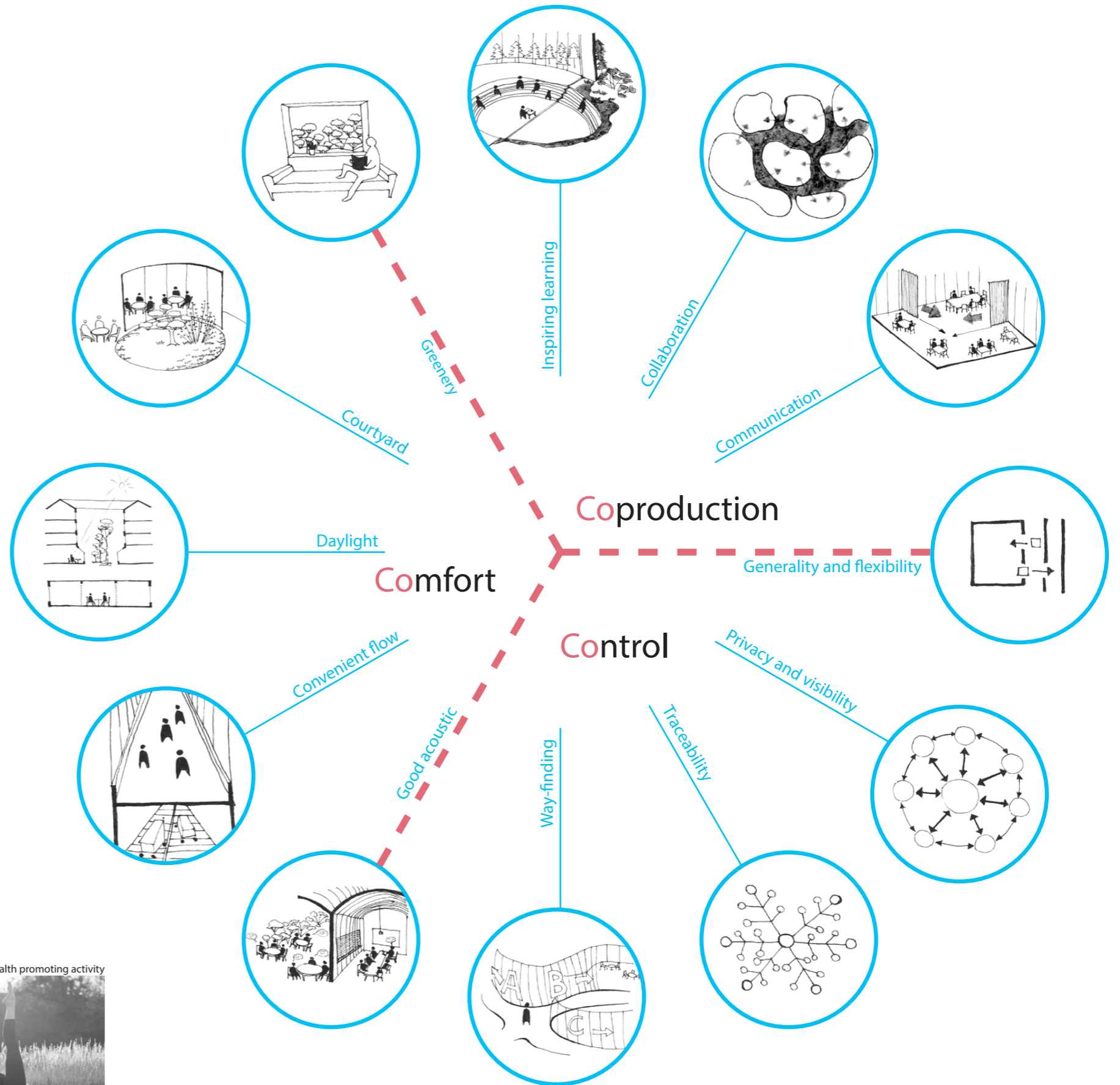
Healthcare architecture today, which is usually built some decades ago, has its quality of efficiency and rationality. Since new technology develops and human centered demand increases, healthcare buildings in the future need to be able to support co-production of health and care between patients, relatives, healthcare staff and other actors in society.

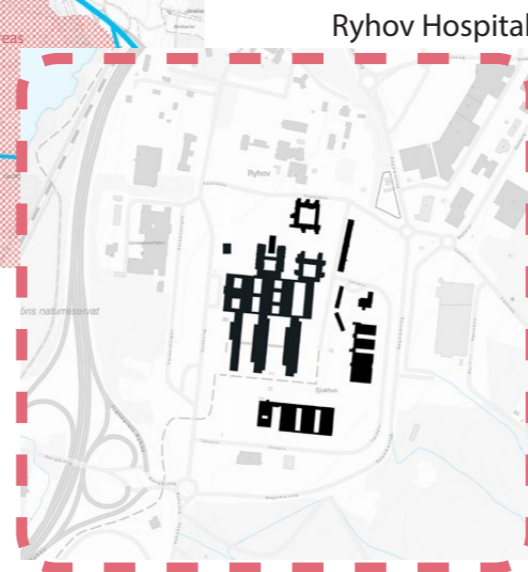
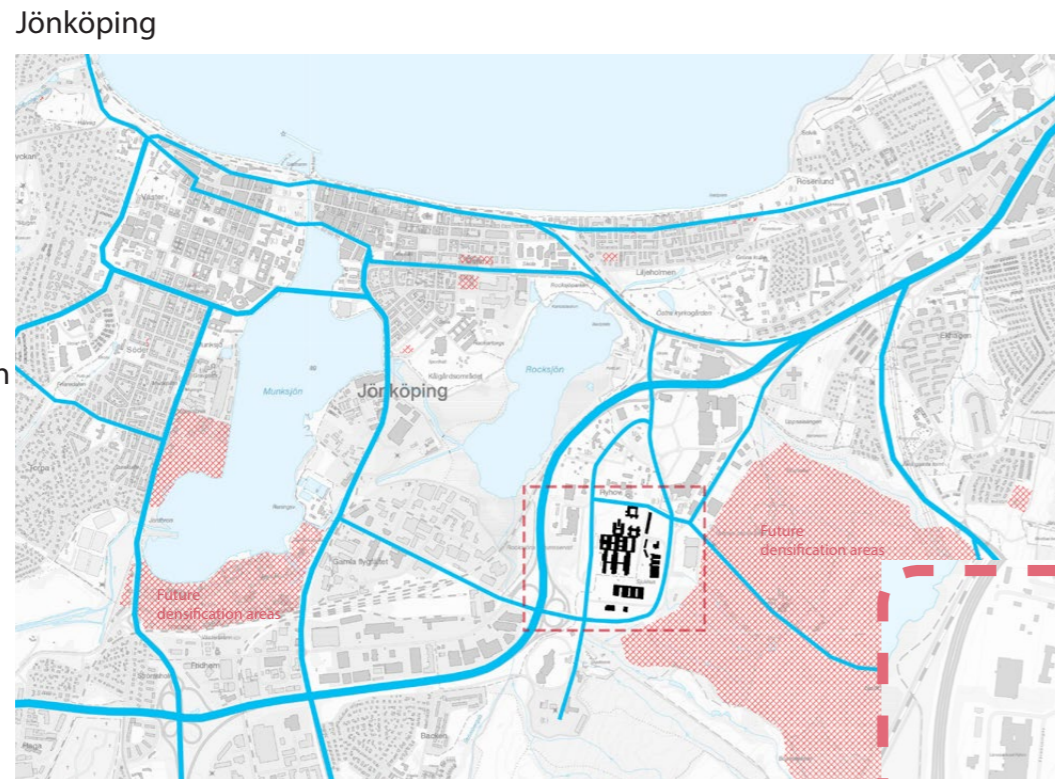
Life Gateway Jönköping is a new unit added to the existing Ryhov Hospital. It aims to explore the fundamental changes in healthcare delivery in 10 years. LGJ is not only a new entrance and exit for the whole hospital, but it contributes a meeting place between citizens and healthcare, based on human interactions and advanced technology.

The main ideas of future vision in LGJ is summed up to three "COs", namely comfort, control and coproducing. It comes from our emphasis on creating a healing environment at the same time as supporting human meetings and integrating structuralism, flexibility and generality.

Sustainability

In the project, sustainability has not only been explored in the functional and technological aspect, by collecting rain water through three atriums and designing general room structures. We focus also on the aesthetic and social aspect. We believe in through stimulating people's interactions and making use of the presence of greenery and daylight, it will increase the human centered quality in the future healthcare. It balances the efficiency and rationality of the traditional hospitals.





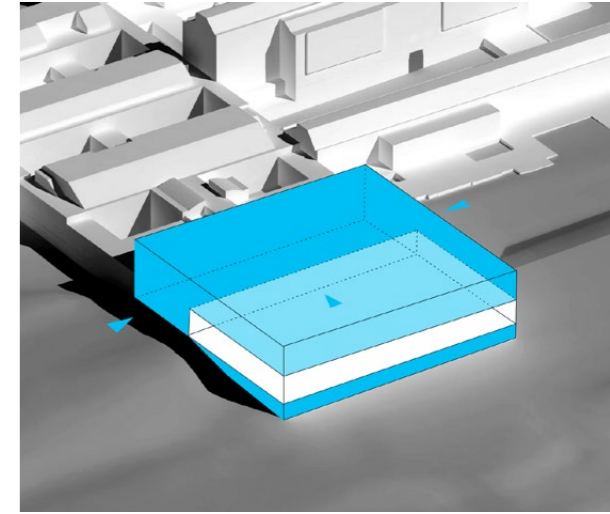
Site

The existing healthcare complex Ryhov Hospital, is a specialized hospital with plenty of beautiful greenery around and in it. The decision on choosing site for the project is based on the vision towards the future development, by keeping the existing infrastructure system. The added building unit will replace the existing entrance and extend as the main head of the whole complex rather than on the side, to enhance the central entrance situation and keep the existing corridor system.

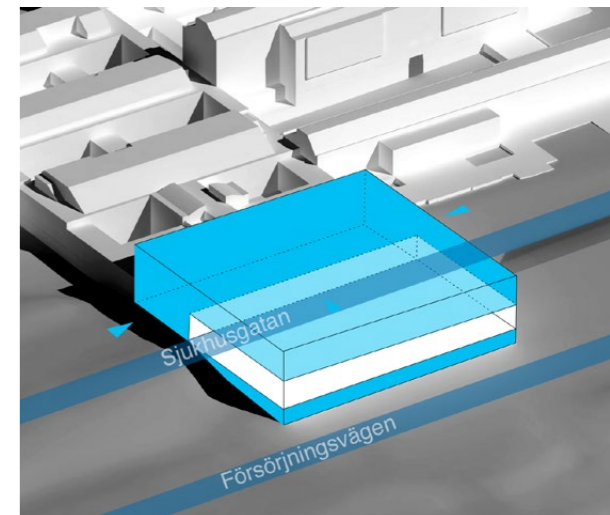
There are some complex challenges of this site due to the differences of the levels. How can we keep a low volume to respond to the surrounding and at the same time to fulfill the program requirements? How will we deal with the different traffic flows? The form of the building is developed on these conditions by merging with the existing entrance and adding new functions. It results in a low horizontal volume with an open entrance floor that visitors can access from three sides. The north entrance is mainly connected to the biking and pedestrian paths, and it links with the surrounding landscape. The west entrance is covered to create a protected bus stop, while the south entrance is closest to the parking lots. The ambulances arrives to the ambulance garage from the lower road Försörjningsvägen.



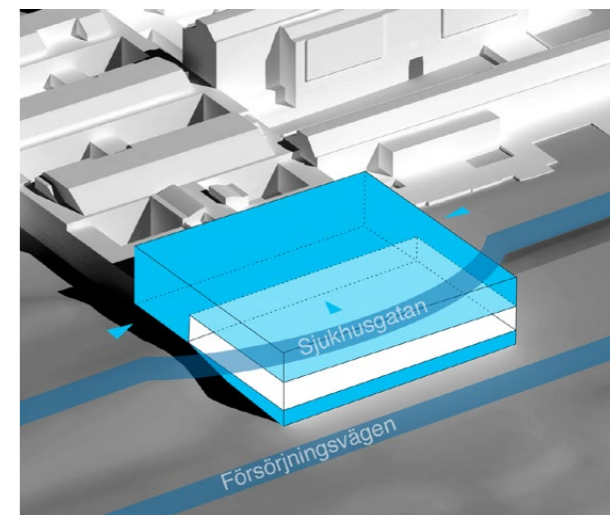
Main structure expansion



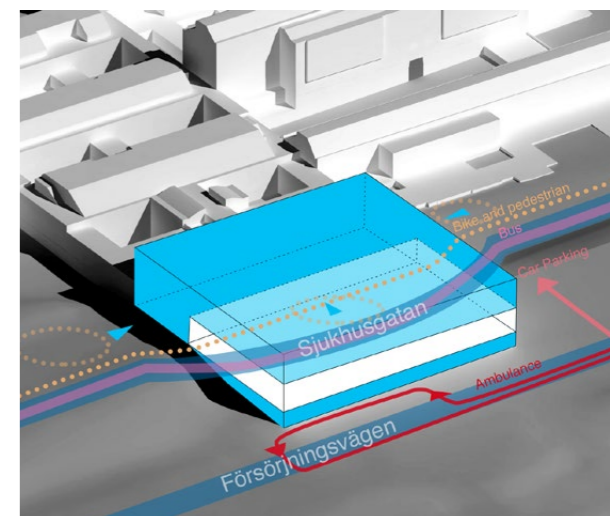
Existing roads



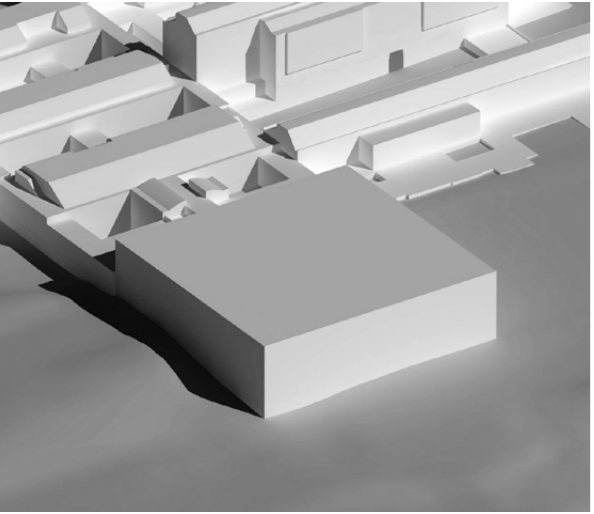
Move the road from new entrance area



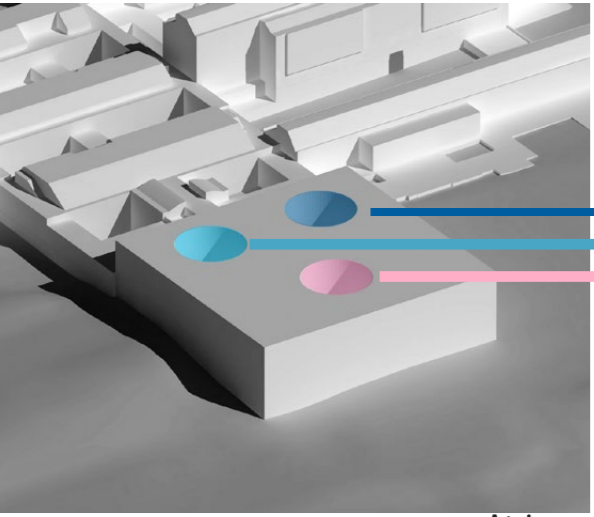
New traffics



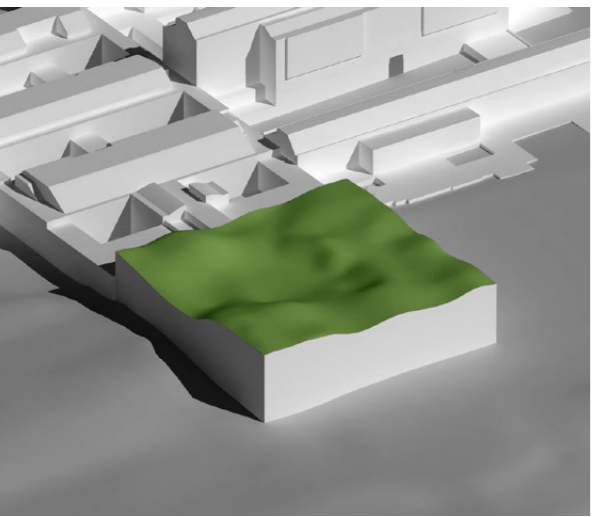
Form design development



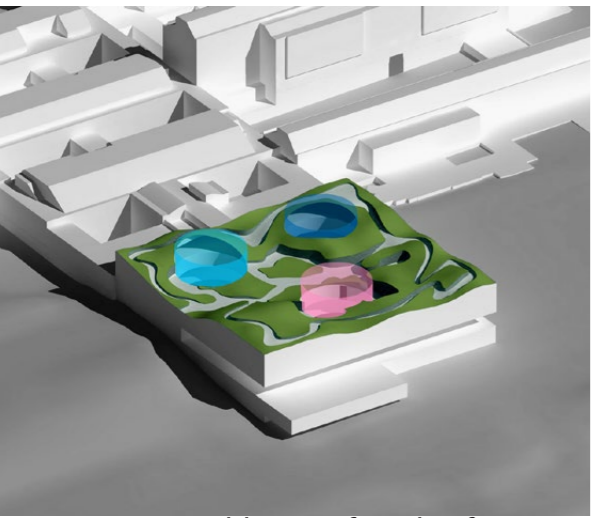
Main structure expansion



Atriums



Topography



Adding roof garden functions

Learning atrium

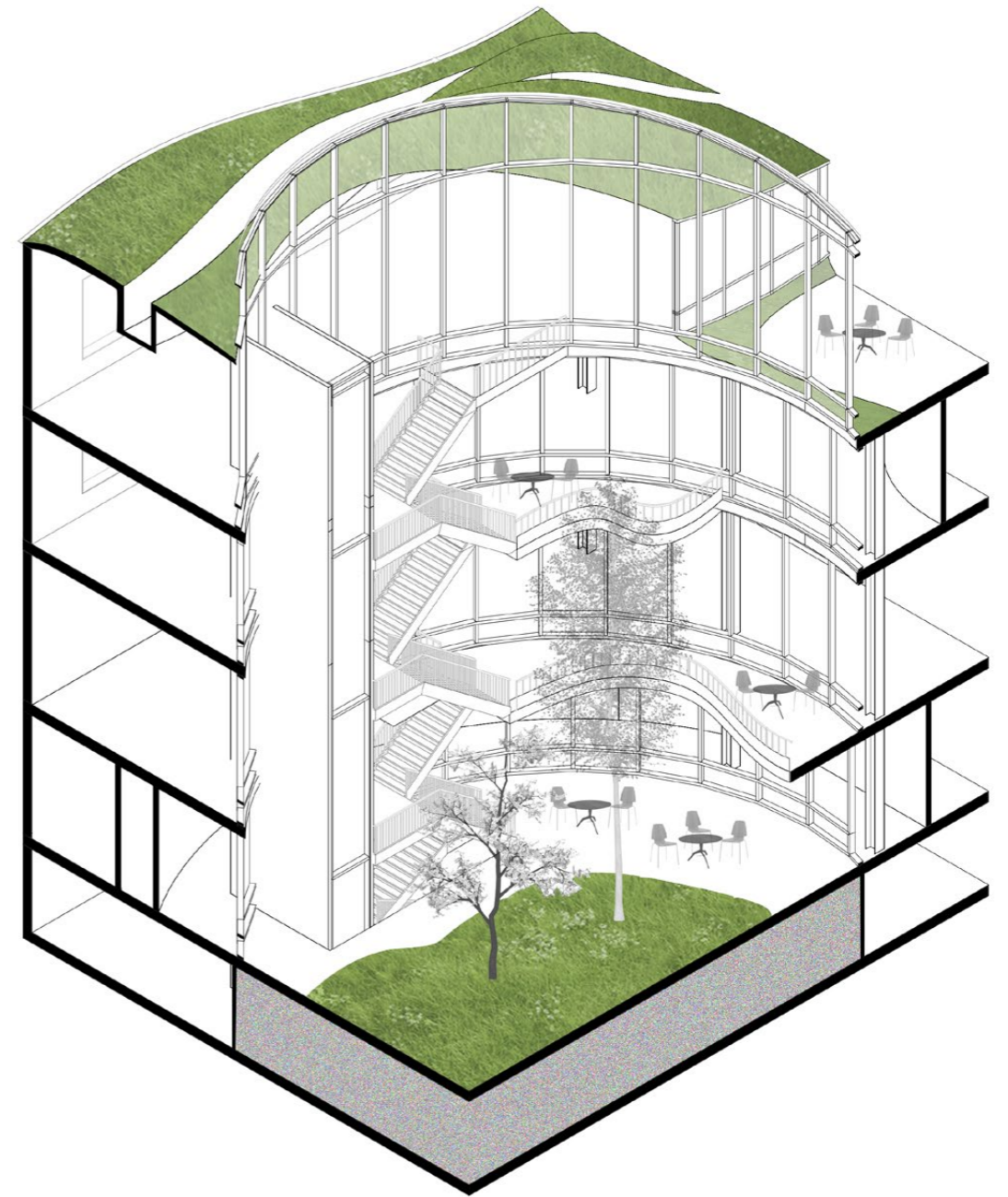
- Library
- Auditorium
- Conference rooms
- Study rooms
- Spontaneous meeting spaces

Commercial atrium

- Pharmacy
- Shops
- Restaurant
- Café
- Spontaneous meeting spaces

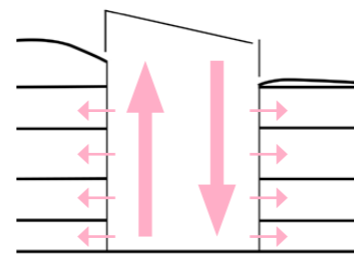
Internal atrium

- Administration
- Labs
- Acute center
- Investigation unit
- Rehabilitation unit
- Observation unit

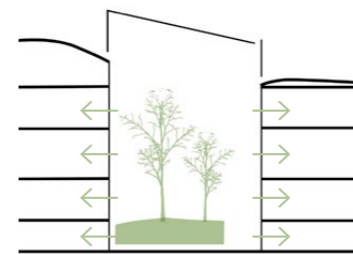


Atrium quality

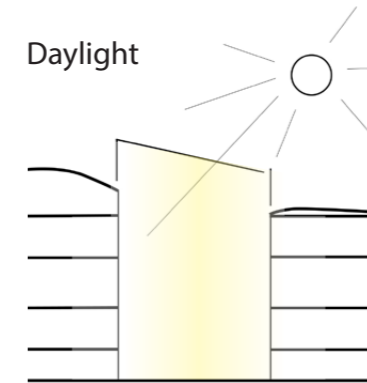
Communication



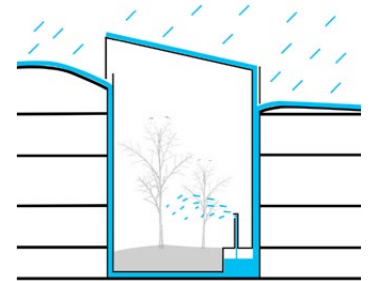
Greenery



Daylight



Rain water collection



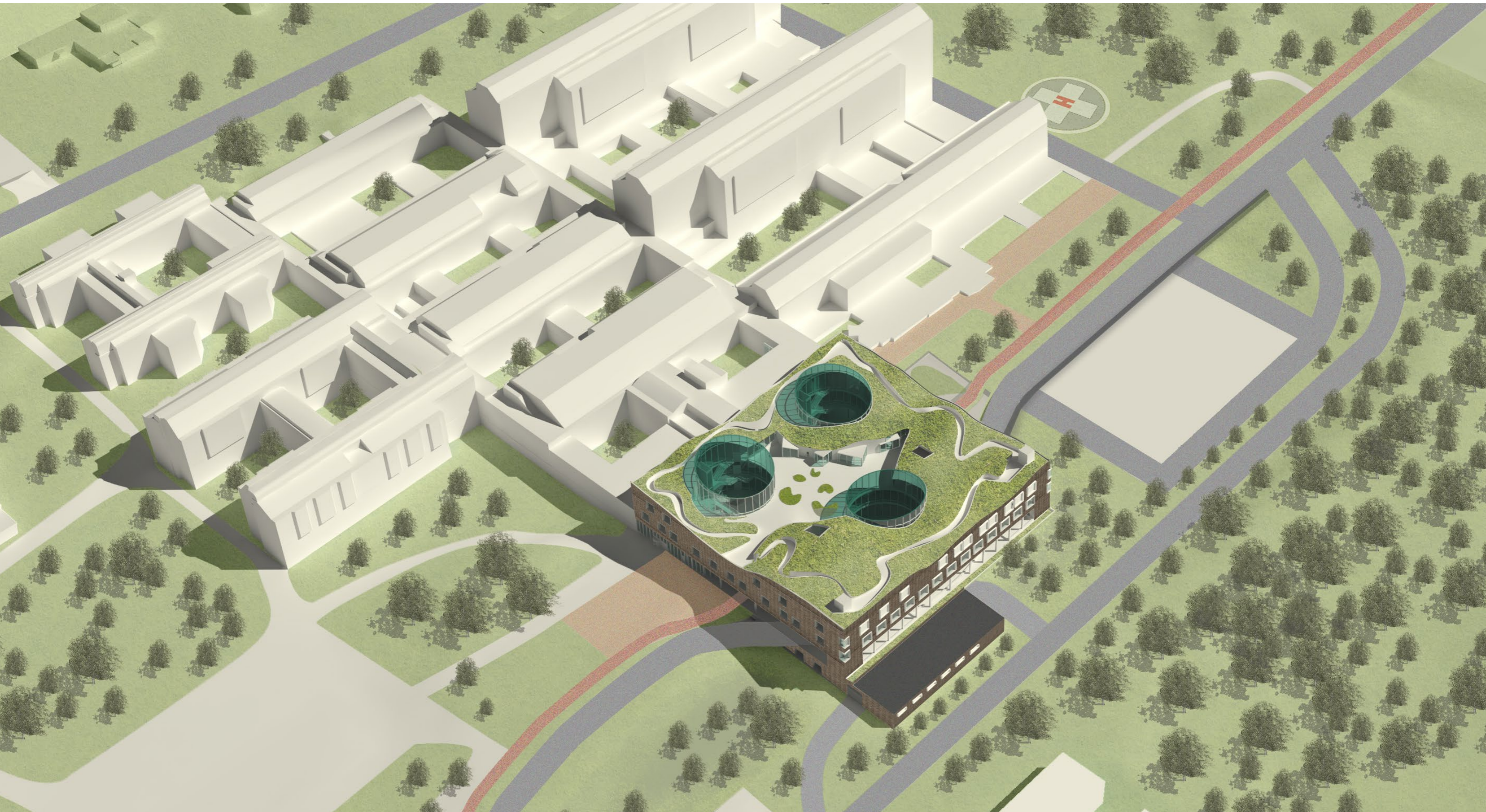
Perspective from Atrium



Master plan 1:2000

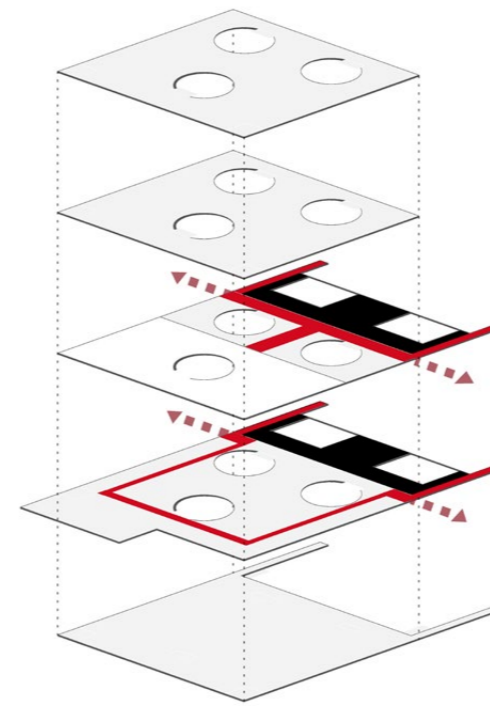
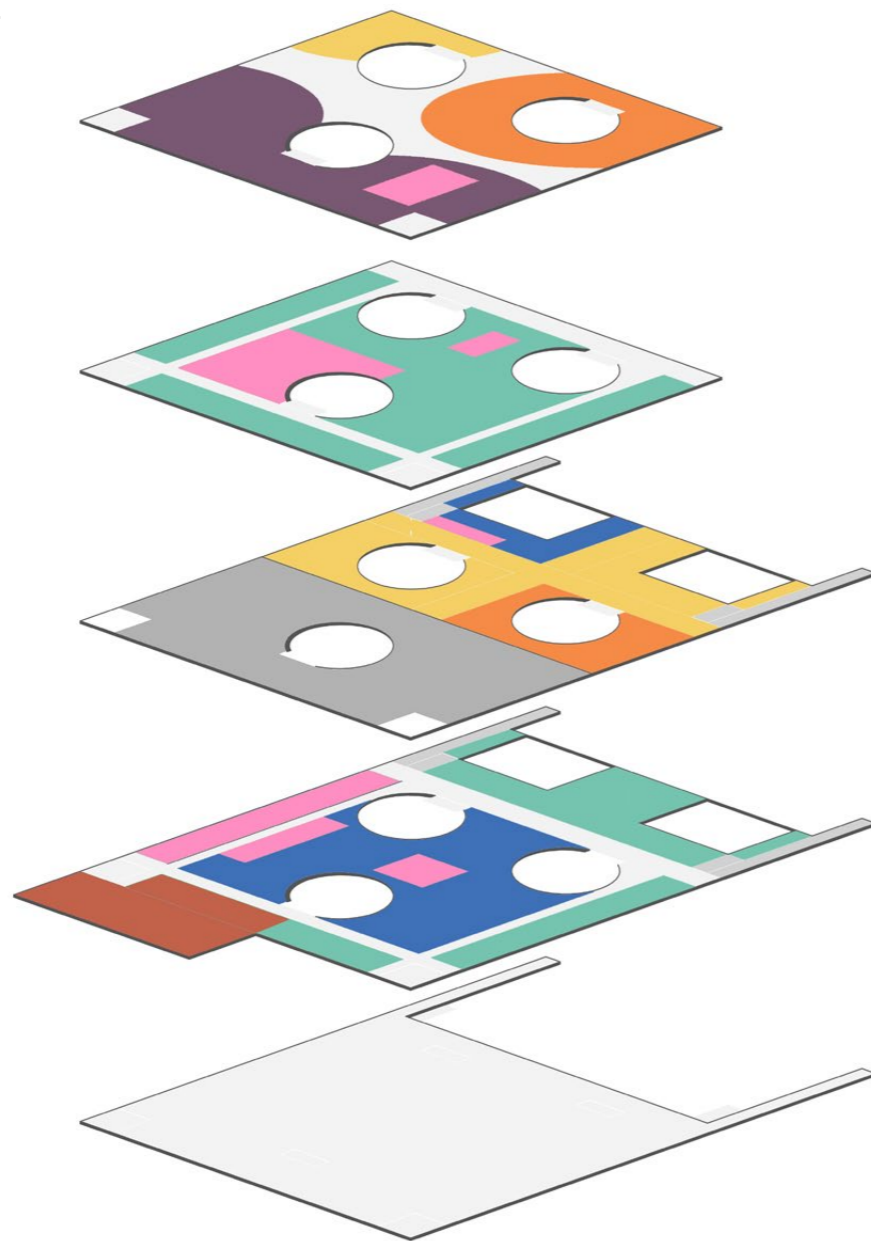


Overview

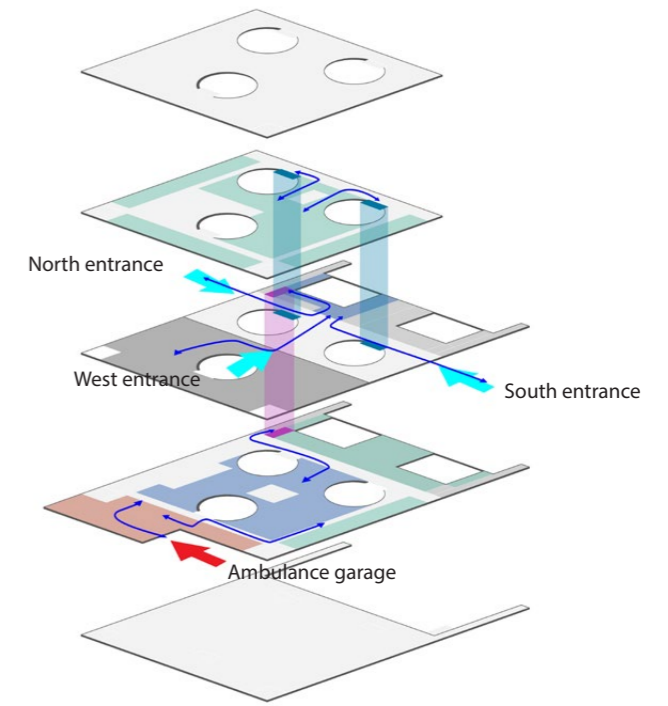


Program and flows

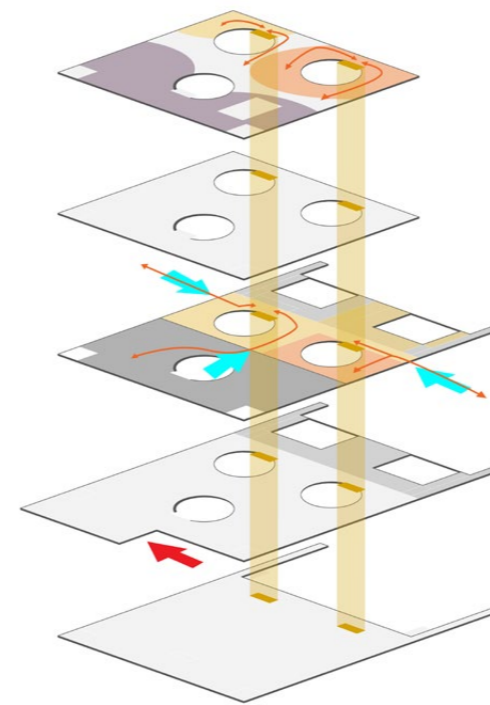
- 6300 sqm Investigation unit
- 1650 sqm Acute center
- 950 sqm Ambulance garage/trauma
- 1600 sqm Rehabilitation unit
- 1800 sqm Public area & lobby
- 1600 sqm Learning center
- 1300 sqm Staff area
- 3900 sqm Garage
- 2000sqm Bus stop



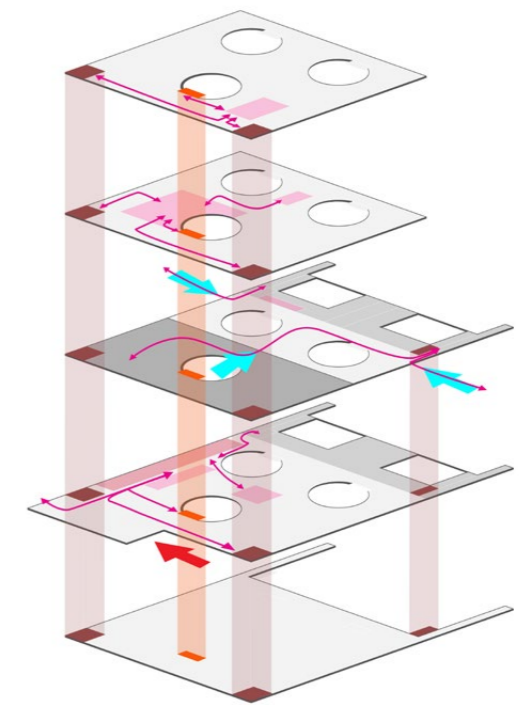
Connection to existing main corridors and potential future expansions



Patient flows



Flows of other visitors to the public functions f.ex. learning center, library, café and restaurant.

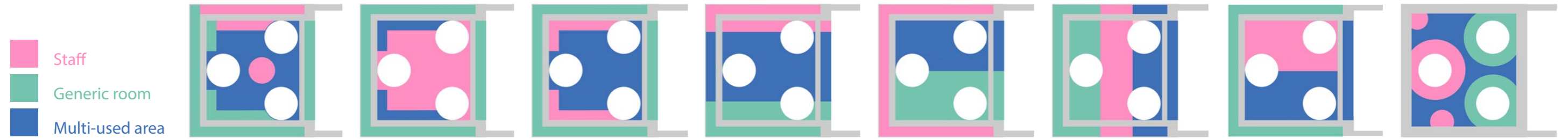


Staff/internal flows and bed transports



Floor arrangement tests

For hotfloor and investigation unit

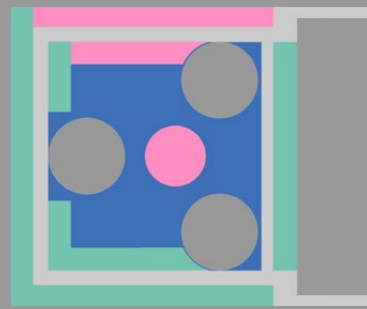


Category	Test 1	Test 2	Test 3	Test 4	Test 5	Test 6	Test 7	Test 8
Comfort								
Daylight	●●●○	●●○○	●●●○	●●●○	●●●○	●●●○	●●●○	●●●○
Preccence of nature	●●●○	●●○○	●●●○	●●●○	●●●○	●●●○	●●●○	●●●○
Flow convinience	●●●○	●●●●	●●○○	●●●○	●●●○	●●●○	●●●○	●●●○
Openness	●●●○	●●○○	●●●○	●●●○	●●○○	●○○○	●●○○	●●●○
Privacy	●●●○	●●●●	●●○○	●●○○	●○○○	●○○○	●●○○	●○○○
Control								
Wayfinding	●●●○	●●●○	●●●○	●●●○	●●●○	●●●○	●●●○	●○○○
Traceability	●●●○	●●○○	●●●○	●●●○	●●●○	●●●○	●●●○	●●○○
Visibility	●●●○	●●○○	●●●○	●●○○	●●●○	●●●○	●●●○	●●○○
Space use effeciency	●●●○	●●○○	●●●○	●●●○	●●○○	●●○○	●●○○	●○○○
Co-producing								
Staff collabration	●●●●	●●●●	●○○○	●●●●	●●○○	●●●●	●●●●	●●○○
Spontaneous meeting	●●●○	●●○○	●○○○	●●●○	●●●○	●●●○	●●●○	●●●○

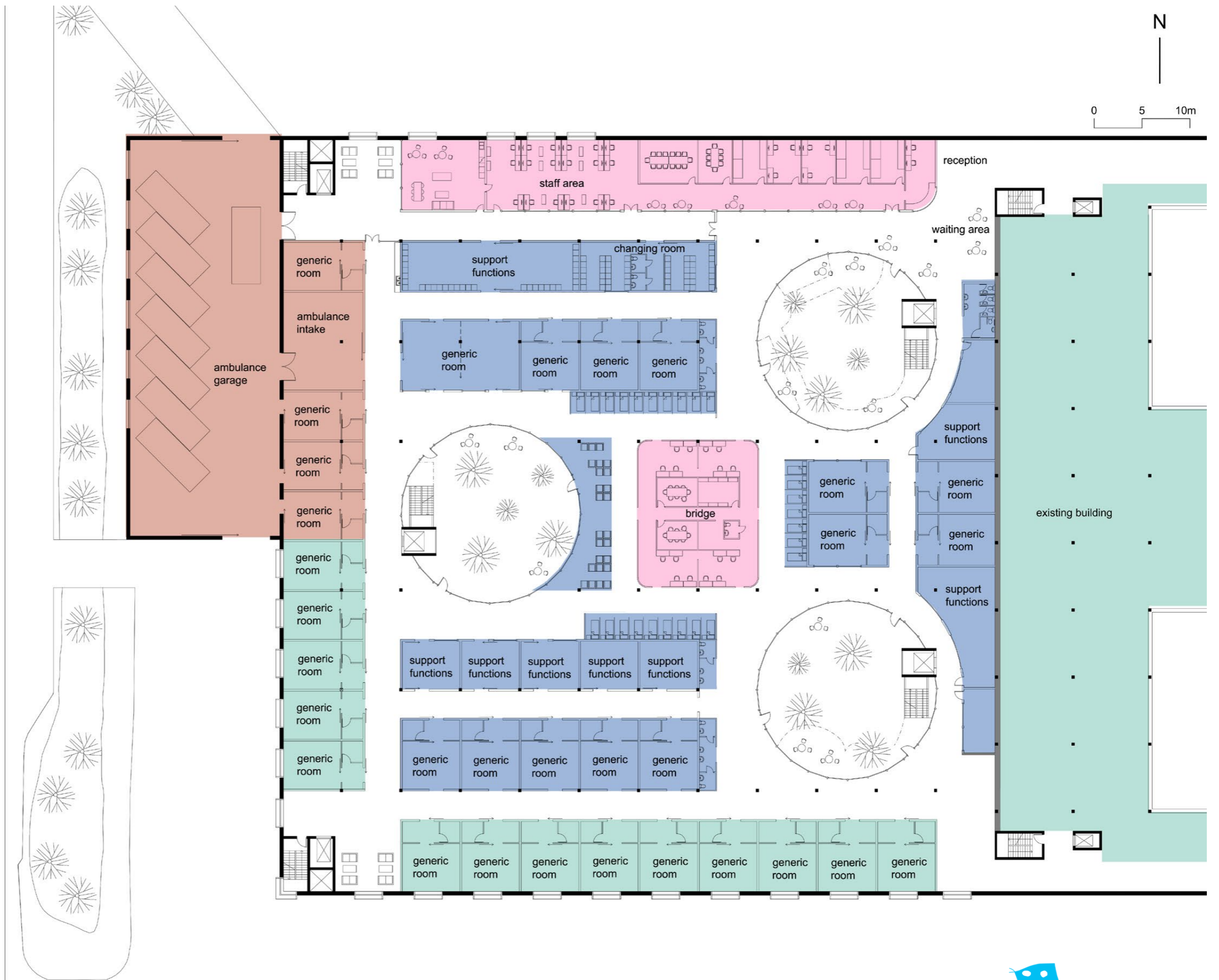
Plan -1

1:400

Hot floor



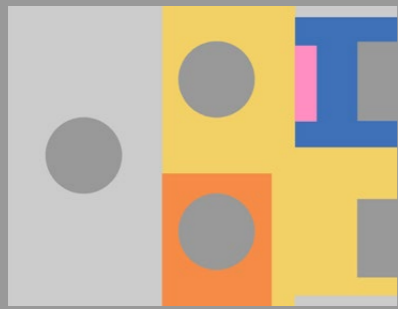
- Staff
- Fixed area
- Multi-used area



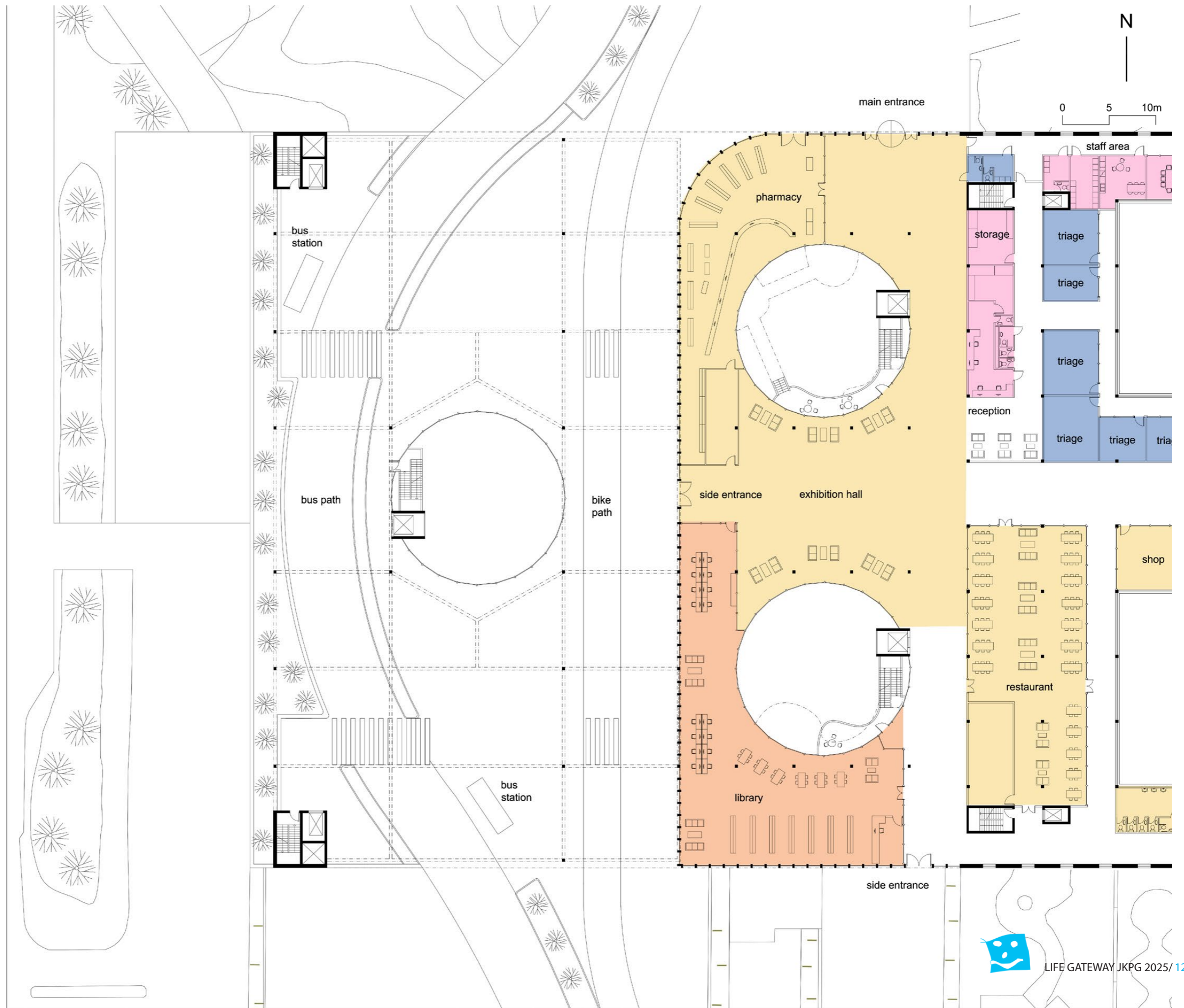
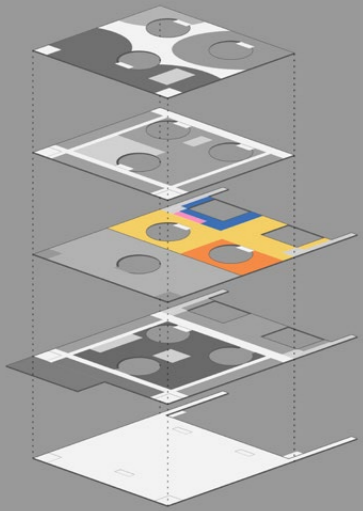
Perspective from the hot floor



Plan 0
1:200
Entrance floor



- Staff
- Triage
- Library
- Public area

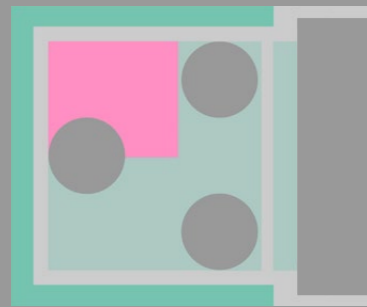


Perspective from the bus stop

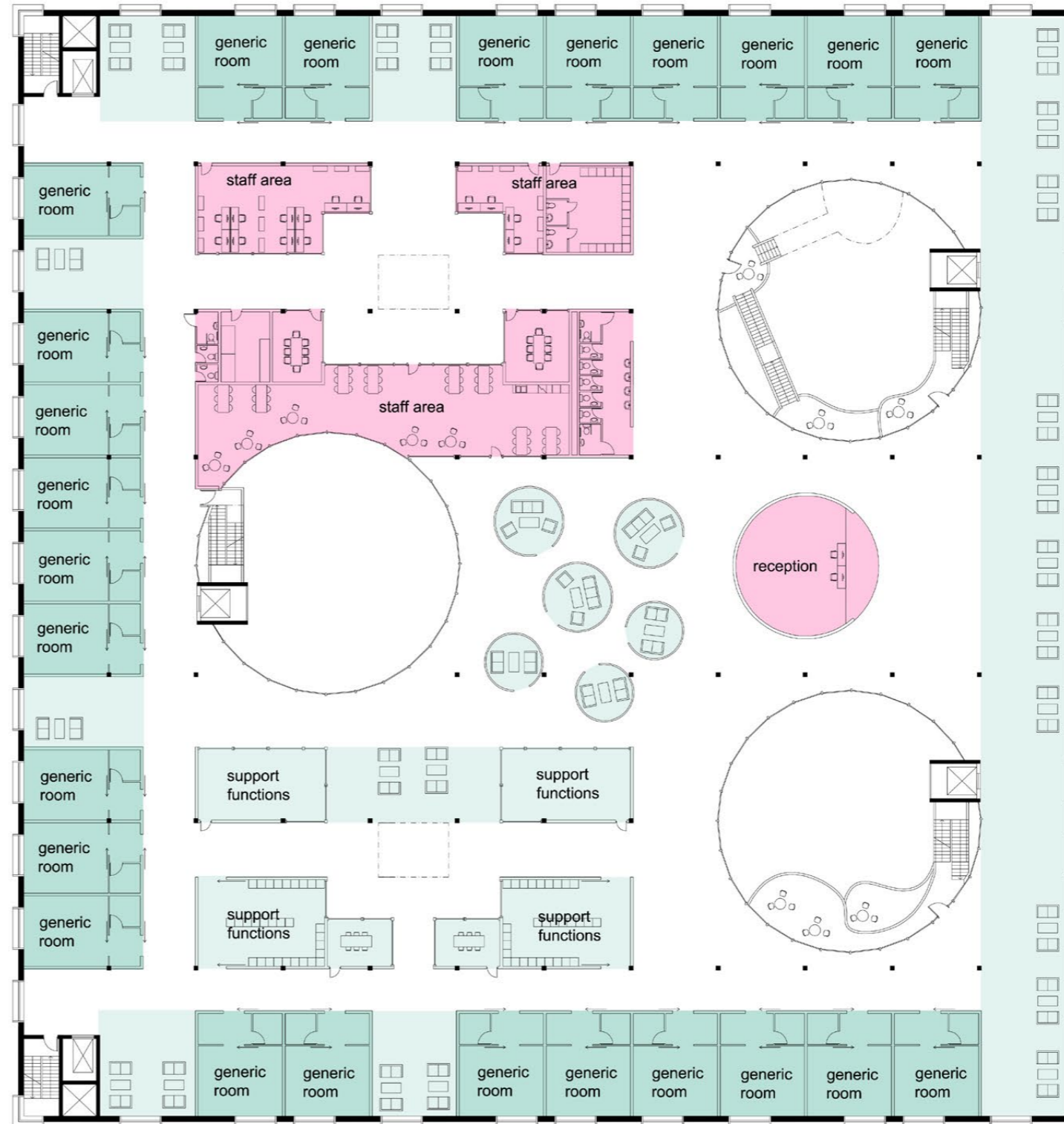
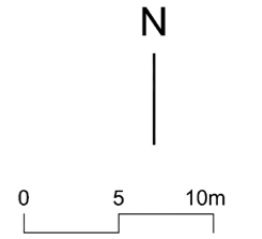
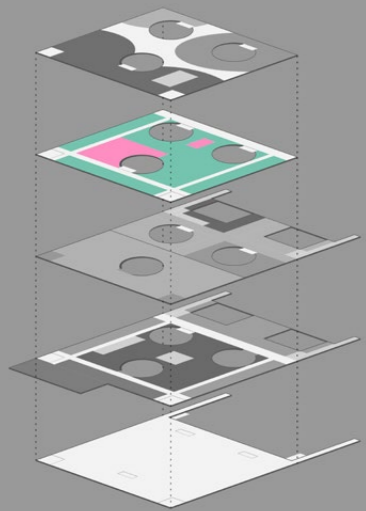


Plan 1 1:200

Investigation unit



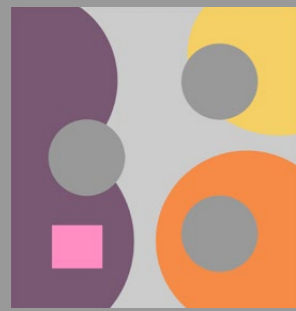
- Staff
- Fixed area
- Multi-used area



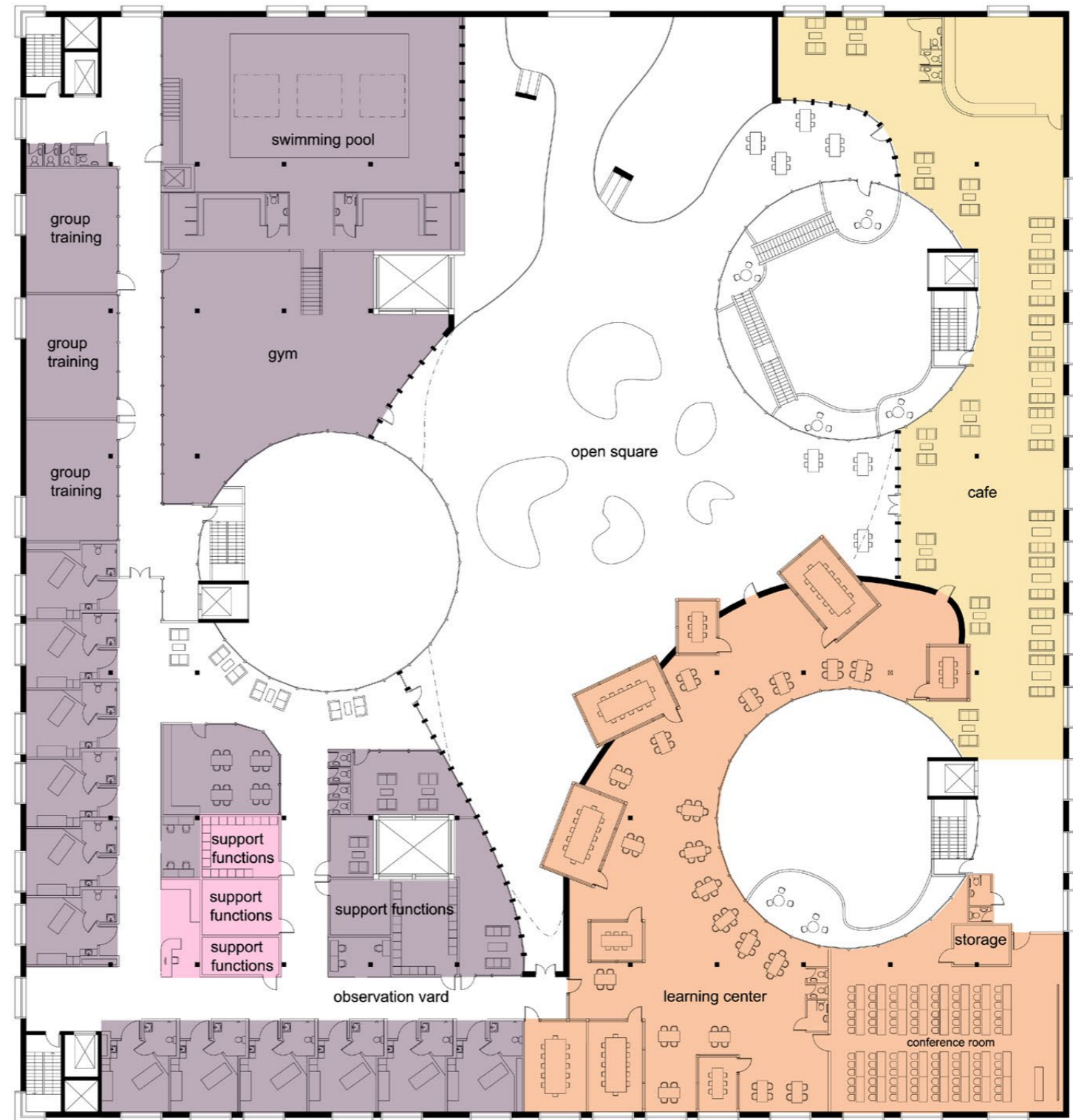
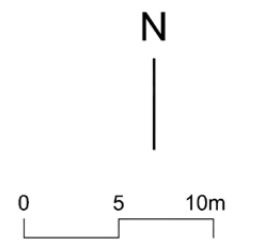
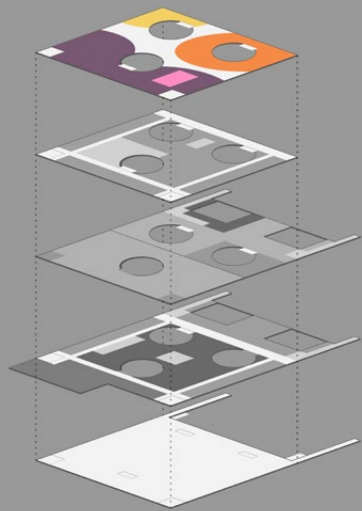
Perspective from the investigation unit balcony



Plan 2
1:400
Roof floor



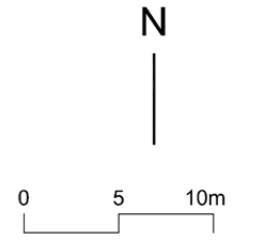
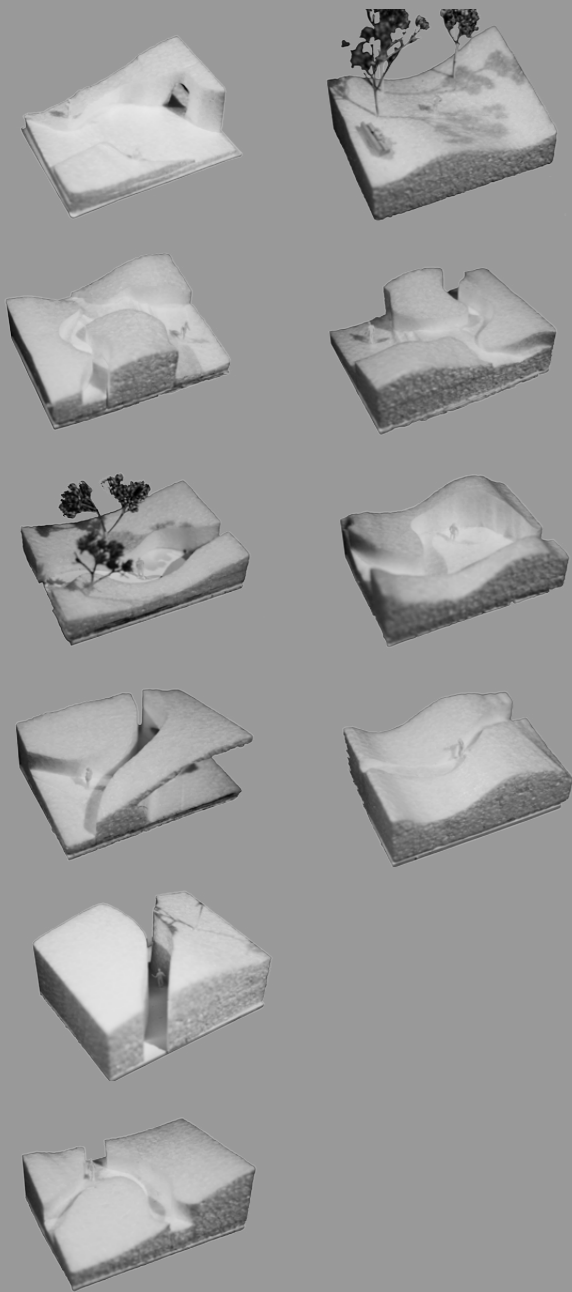
- Staff
- Rehabilitation unit
- Learning center
- Café



Perspective from the rehabilitation unit



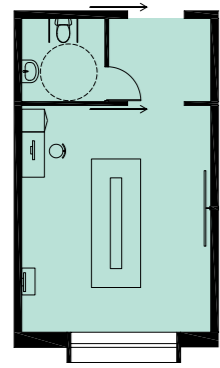
Roof surface 1:400



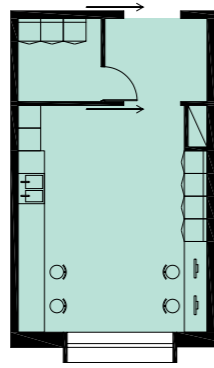
Perspective the roof garden



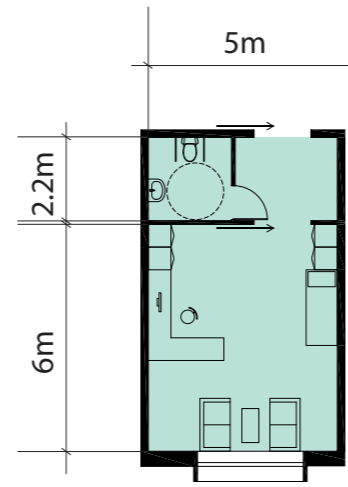
Generic room



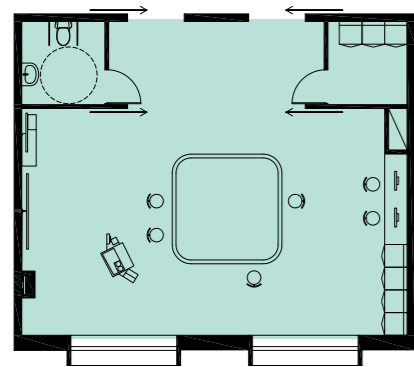
Diagnostic room



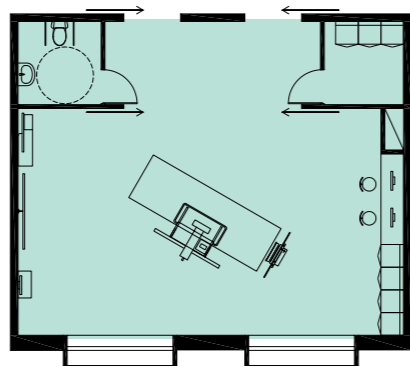
Lab



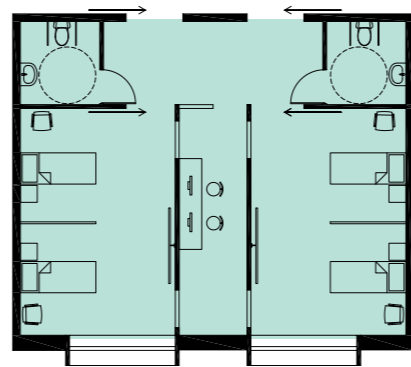
Consulting room



Operation theater



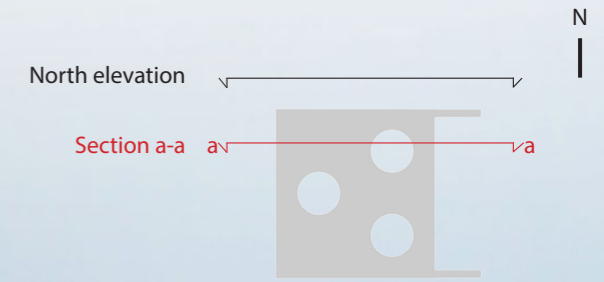
X-ray room



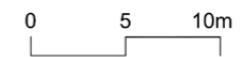
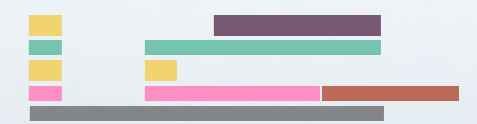
ICU



North elevation 1:400



Section a-a 1:400



West elevation
1:400



Section b-b
1:400



0 5 10m





Arvid Söderholm,
Jingjing Zheng,
Yang Emily Huang