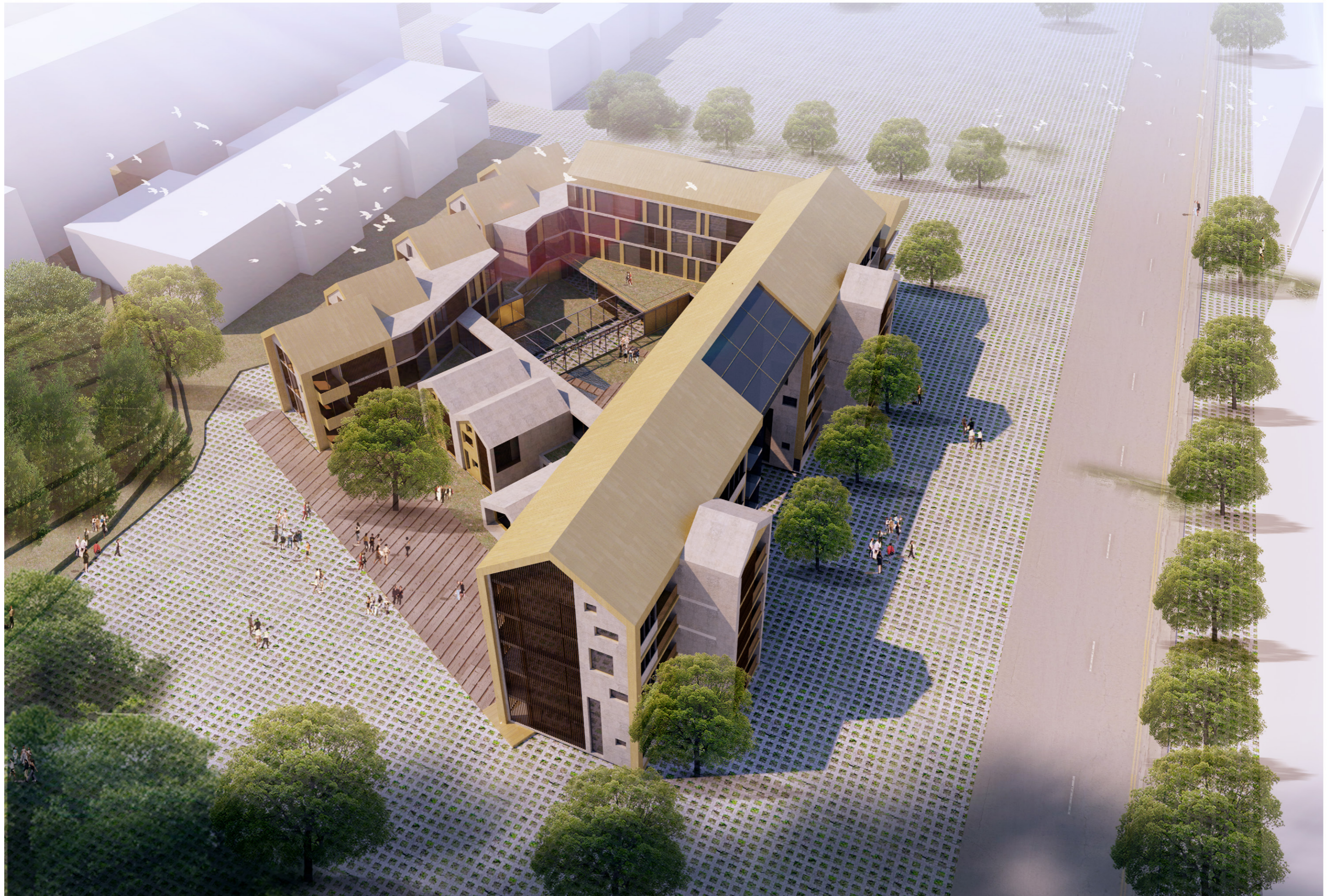


# AUT163 HOUSING FOR SENIORS

LINJING WANG



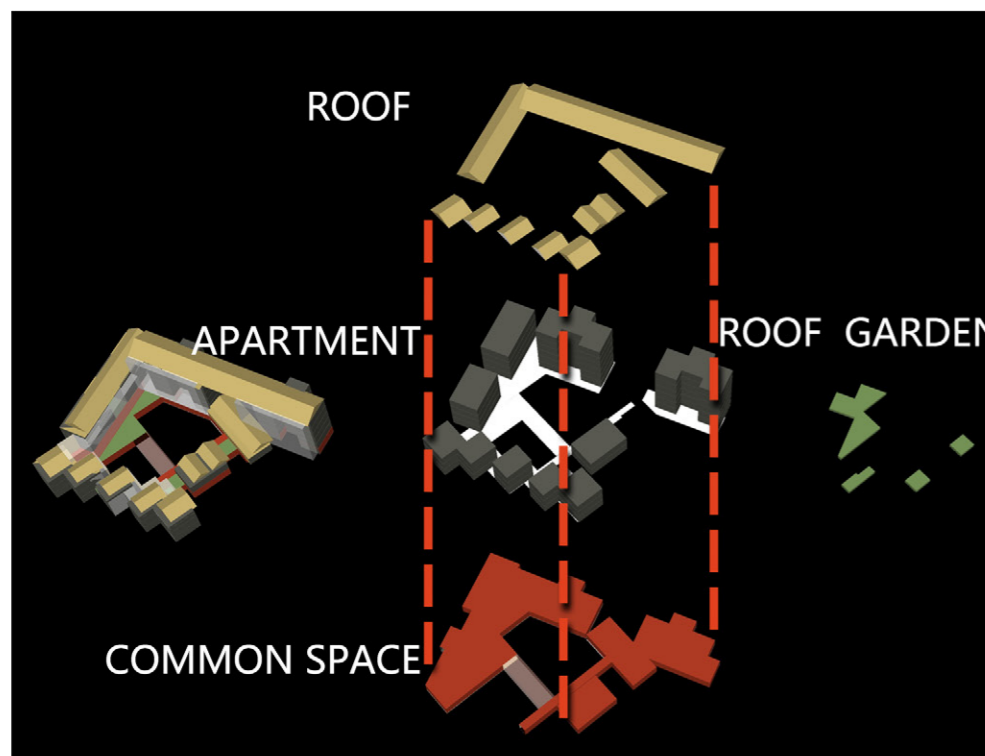
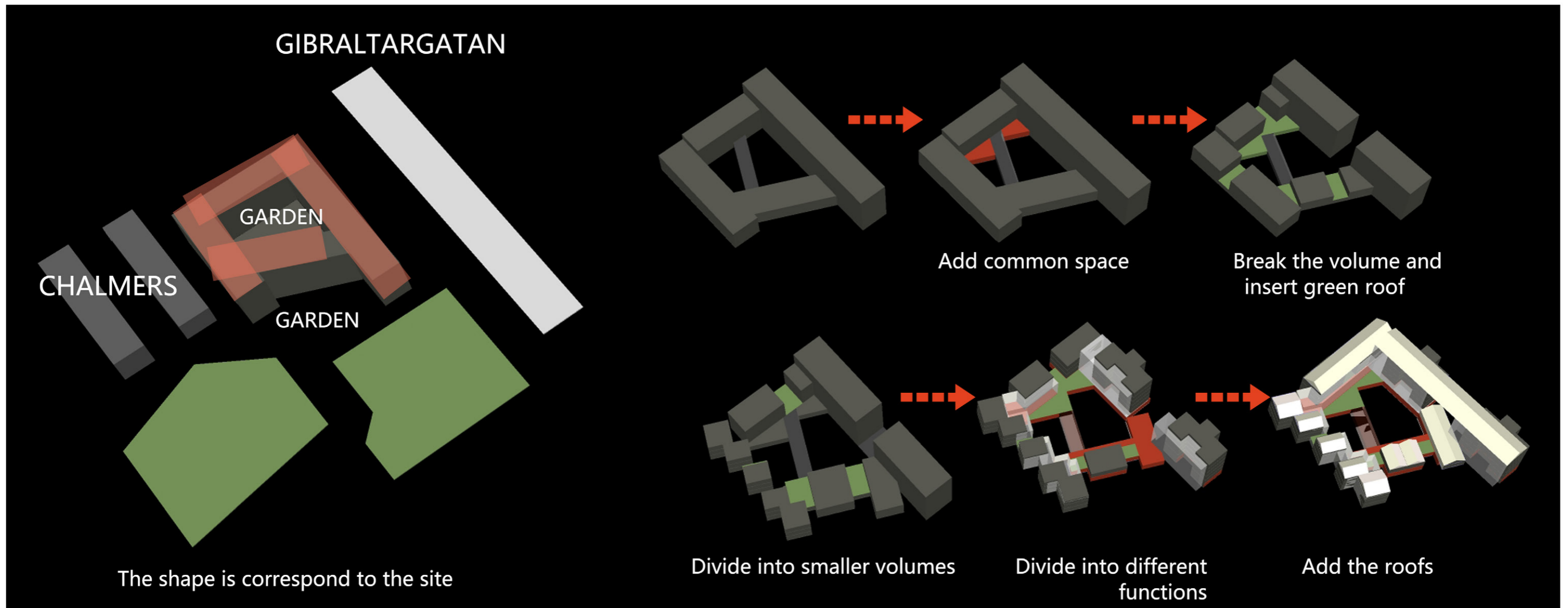
# AUT163 HOUSING FOR SENIORS

LINJING WANG



SITE PLAN 1:400

## GENERATE



# AUT163 HOUSING FOR SENIORS

LINJING WANG



**WINTER GARDEN**  
Using glass wall to divide the inner garden into two parts.

**CORRIDOR**  
Enable the elders to walk around the building

**POOL**



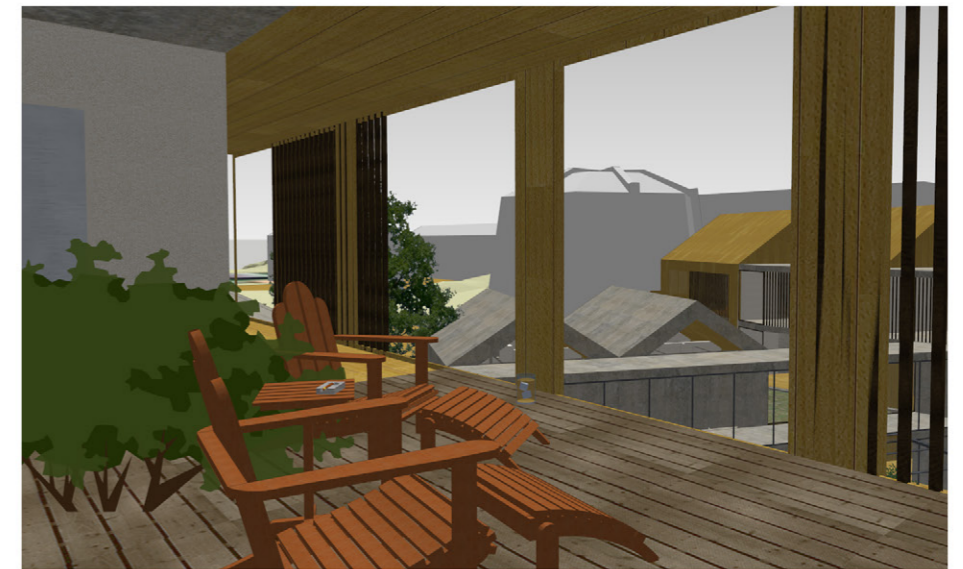
GROUND FLOOR PLAN1 : 300



## ROOF GARDEN

break the volume from second floor to let more sunlight in the inner garden and apartments, then build small gardens on these roof so the elders can still walk around and have more views of green.





SPACE SHARED  
BY NEIGHBOURS



FOURTH FLOOR PLAN 1 : 300

FIFTH FLOOR PLAN 1 : 300



APARTMENT TYPE1-3 1:100 52.8M<sup>2</sup>



APARTMENT TYPE4 1:100 67.2M<sup>2</sup>



APARTMENT TYPE5 1:100 48M<sup>2</sup>



# AUT163 HOUSING FOR SENIORS

LINJING WANG



SECTION A-A 1 : 300



SECTION B-B 1 : 300



# AUT163 HOUSING FOR SENIORS

LINJING WANG



SOUTH FACADE 1 : 300

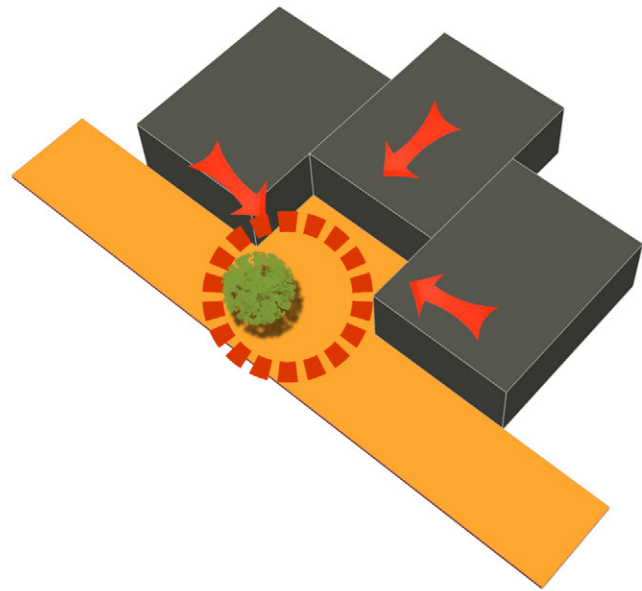


NORTHEAST FACADE 1 : 300

# AUT163 HOUSING FOR SENIORS

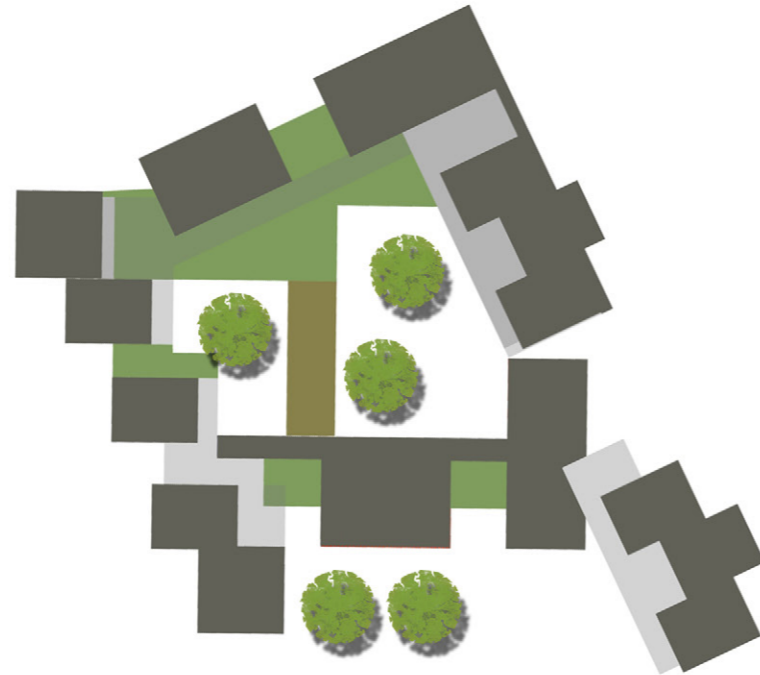
LINJING WANG

## CONCEPT1: CONTACT



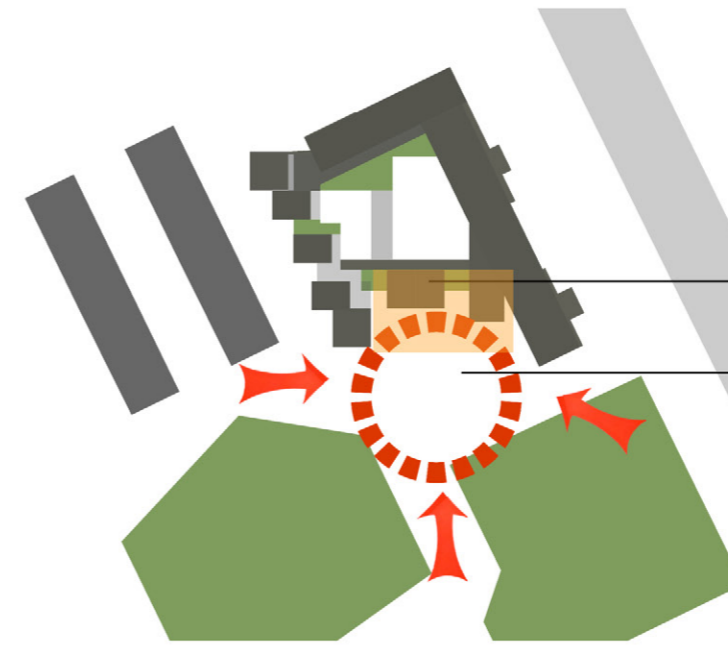
### WITH NEIGHBOUR

providing space for talking with neighbours or have a short meeting with some one. It also could be a space to have a rest when the elders walk around the building



### WITH NATURE

the building has five roof gardens, a winter garden and three gardens with different atmosphere. It will be very convenient for the elders to Contact with nature

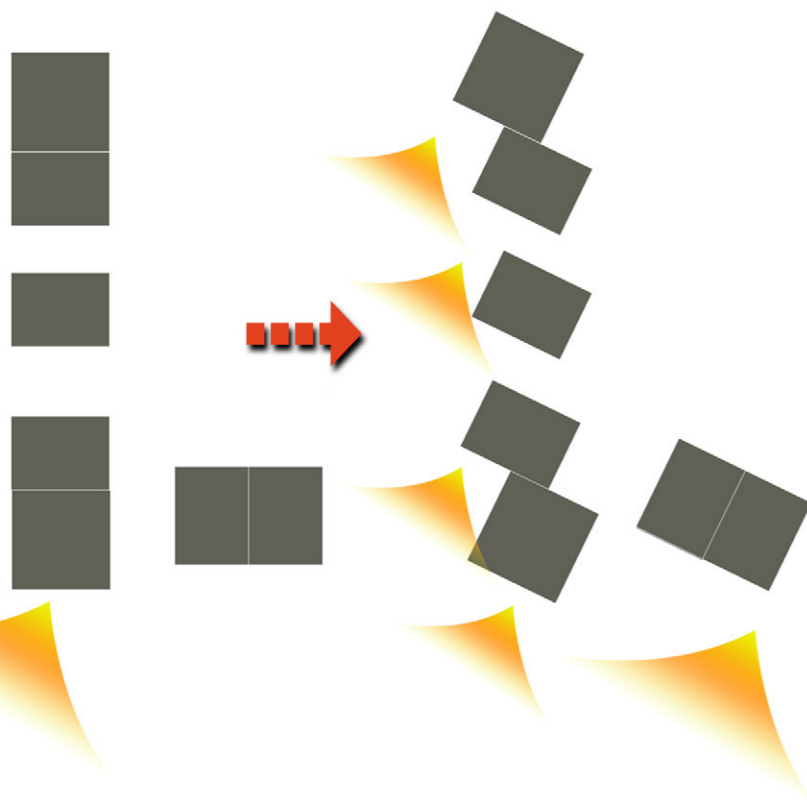


### WITH OTHER PEOPLE...

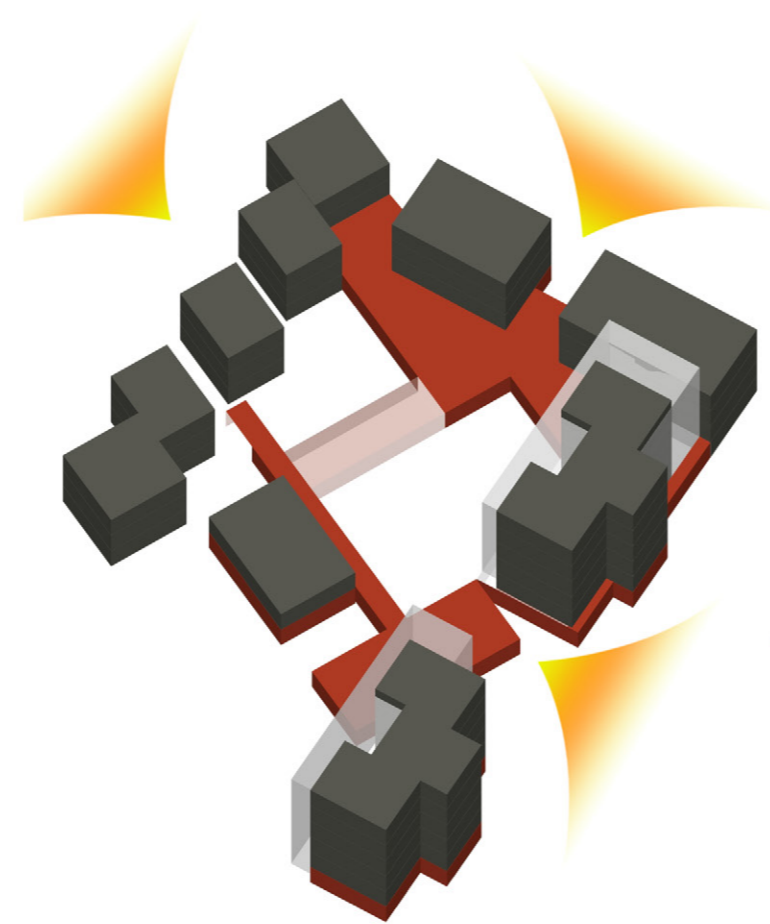
The themes of the outward garden are athletics and open. Athletic facilities and saunas are set along the garden, in where students and neighbouring residents are gathered for leisure and sports activities. That makes the building could also operate as a community activity center.



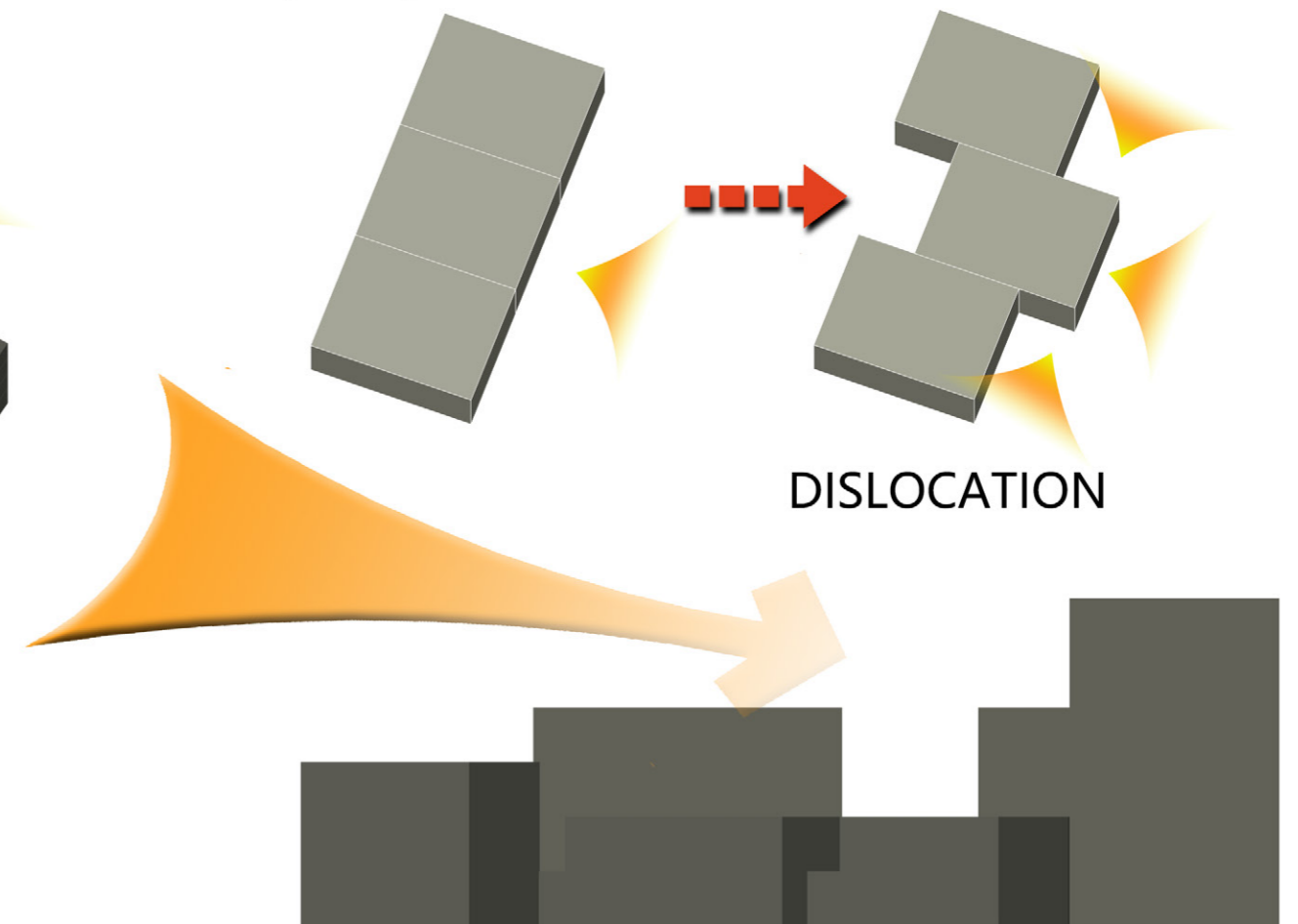
## CONCEPT2: SUNLIGHT



ROTATE



BREAK THE VOLUME



DISLOCATION

CONTROL THE HEIGHT



FORM THE SOUTH FACADE



FORM THE WINTER GARDEN