

THE SMALL VILLAGE

HOUSING FOR SENIORS



TOWN SQUARE

Embla Nilsson · Mattias Jonsson · Ziyu Zhao

AUT 164

2019-12-18

LIVING WITH DEMENTIA

WHAT IS DEMENTIA

Dementia is a name for many kinds of symptom caused by brain damage. The symptoms can vary depending on where the brain is damaged. It can show in different ways but the most common thing is the memory will get worse. Also the language and orientation abilities will affect a person with dementia. Some people get depressed and have huge changes in their behaviours. You will eventually need assistance to be able to live a normal life.

CAUSE

The most common type of dementia is Alzheimers. About 60-70% of the people with dementia have Alzheimers. This is caused by the brain cells that are gradually dying. Today there is no cure for Alzheimers but there is treatment for the symptoms. Studies have shown that alcohol and lack of B-12 could be a cause to dementia.

SALUTOGENESIS

Aron Antonovsky is a professor of medical sociology. This instead of what causes the disease. The model is focused on the relationship between stress, health and coping. The model is then used in dementia villages. The focus here is not on what the people with dementia can't do, it's all about what they can do. Also on how they can contribute to their own living. Aron Antonovsky means that Salutogenesis is a needed approach that is focused on supporting human health and well-being.

BEHAVIOUR

The behaviours of a person diagnosed with dementia are different. Some likes to walk around, some like to pick up things along the way and place them somewhere else. Repeating some of these behaviours over and over is common. Also open and closing doors is usually repeated, making other disturbed by the noise. Some people like to shout and scream, pee in the potted plants indoors or they want to go home where they grew up as children.

150 000
PEOPLE IN SWEDEN
HAS DEMENTIA

80
EVERY 5th PERSON
OVER 80 YEARS OLD
HAS DEMENTIA

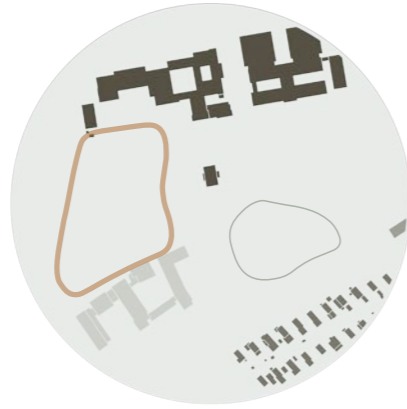
25 000
GETS THE
DIAGNOSE EVERY
YEAR

66 000
PEOPLE ARE LIVING
IN A HOME FOR
ELDERLY

THE SITE

BUILDINGS

To the south of the site is a small and calm villa area. In the north Bräcke Diakoni has some buildings, including a preschool. To the east they are building new apartments for elderly.



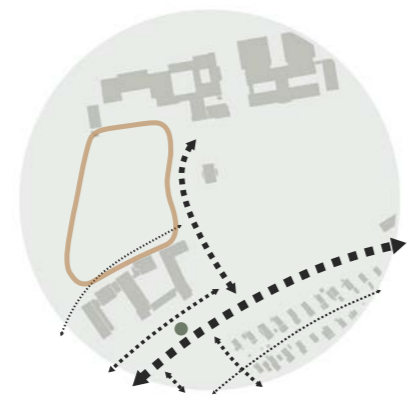
GREENERY

Green areas with old oak trees are surrounding the site. The typography has high variation.

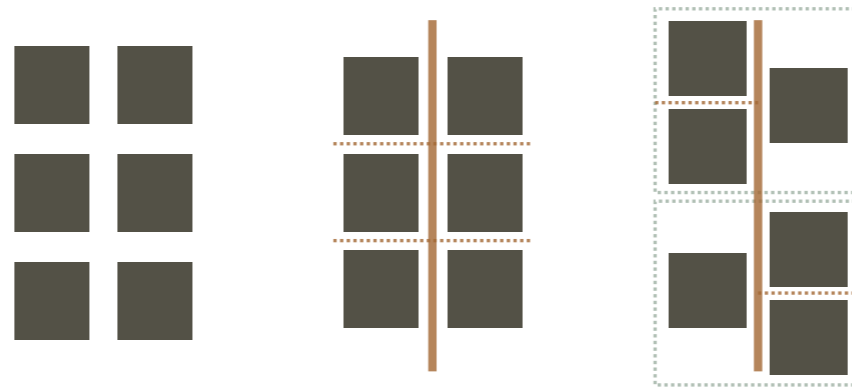


STREETS

The site is situated in Bräcke by Bräcke Östergårds väg. To the south lays Bräckevägen, here is a higher traffic density with a bus stop. Smaller streets are connecting to Bräckevägen.



THE PROCESS



To make a small scale village, we divided the units into multiple buildings. Then we made the main street and smaller streets. We then divided the buildings into groups.

The buildings were then shaped and they made a courtyard. To get it more open we removed one building. We later connected these to each other and still keep the small scale.



THE CONCEPT

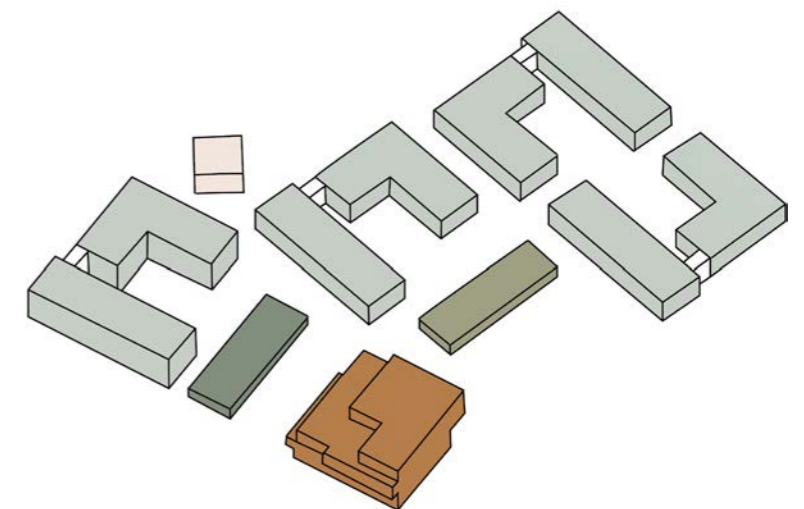
Our concept has been to take the small village scale and combine it with a city feeling and the surrounding greenery. Making a small village with everything a person with dementia needs. We wanted to use the greenery and make outdoor areas into an everyday living room for the people with dementia.



THE VILLAGE

The village has everything you need close by. Everything in the village should seem familiar to the people living there. It has a Town hall that is working as a meeting spot and is close by to the entrance of the village and the Town Square. The Town Square has an overview of the village and a market hall close by. The market hall has a small kiosk, hairdresser and a second hand store. Further in the forest is a beautiful building that we call the Ateljé. Here you can have painting classes, yoga or birthday parties overlooking the old oak trees. For the active elderly they can do some simple workout in the active park, perhaps together with the children from the preschool.

The village is planned so that the people living here can walk around and see new things and pick out their favourite spot and walking routes. It has a park where they can sit and enjoy all the butterflies in the summer. In the winter they can enjoy the Light Garden between two of the units. After a fika under the pergola perhaps take a walk on the pathway around the old trees ending the with a boul match with your neighbour.



1:1000



0 10m 20m 30m 40m 50m

1:500

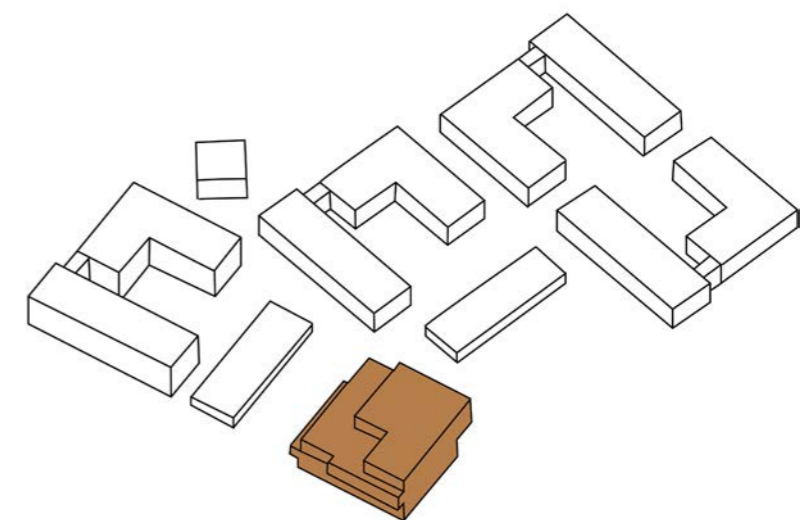


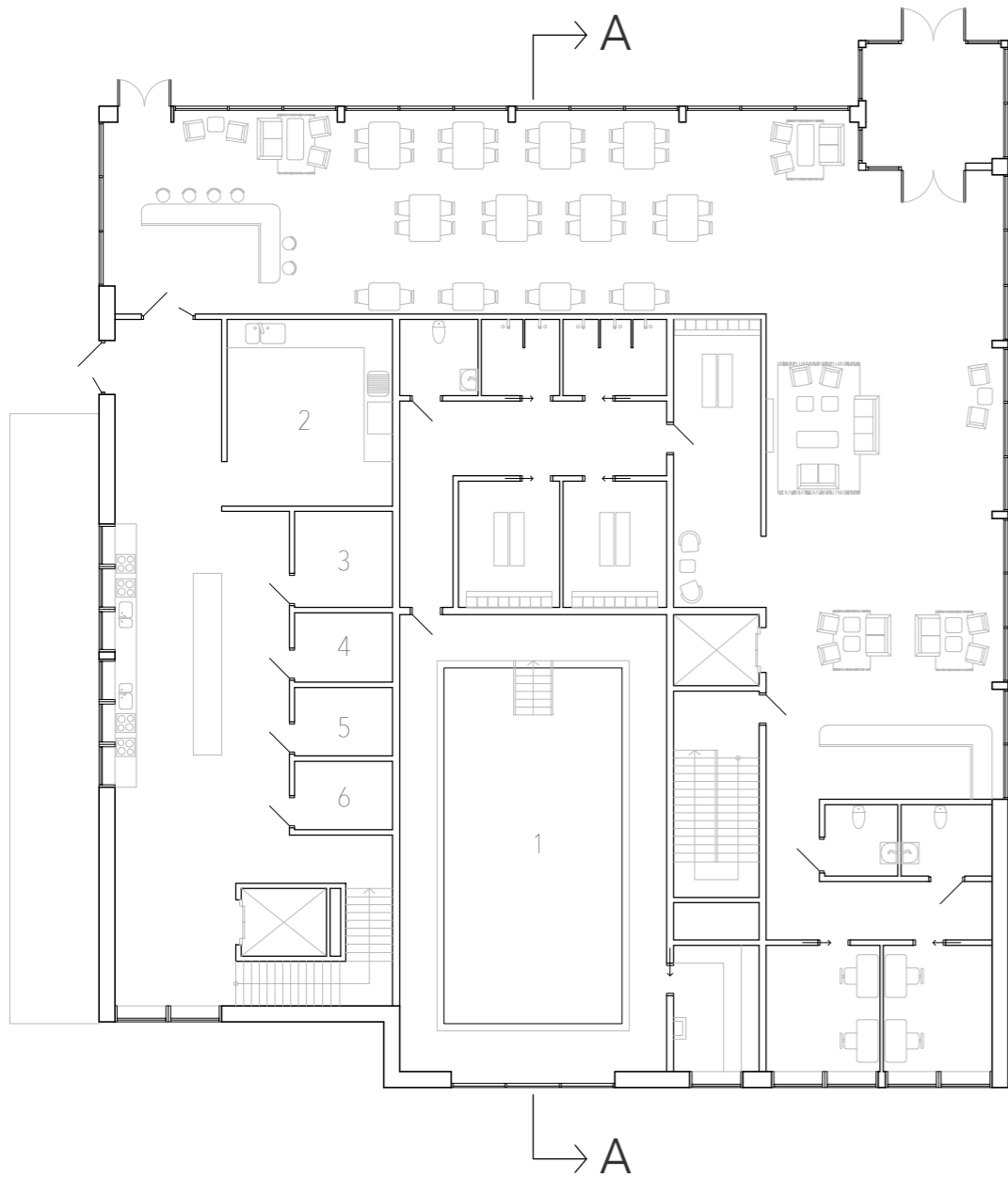
PARK

THE TOWN HALL

The Town hall is served as the meeting spot for the people living in the village. Here you can meet your relatives over a fika in the café or perhaps a beer with your best friend. As in most public houses you also have a lobby. Here you can wait for shuttle or relax in front of the fireplace. If you as a child went swimming you can do that here as well in the Town hall, perhaps ending the workout in the sauna. The swimming hall can also be used by the preschool or by anyone living around Bräcke.

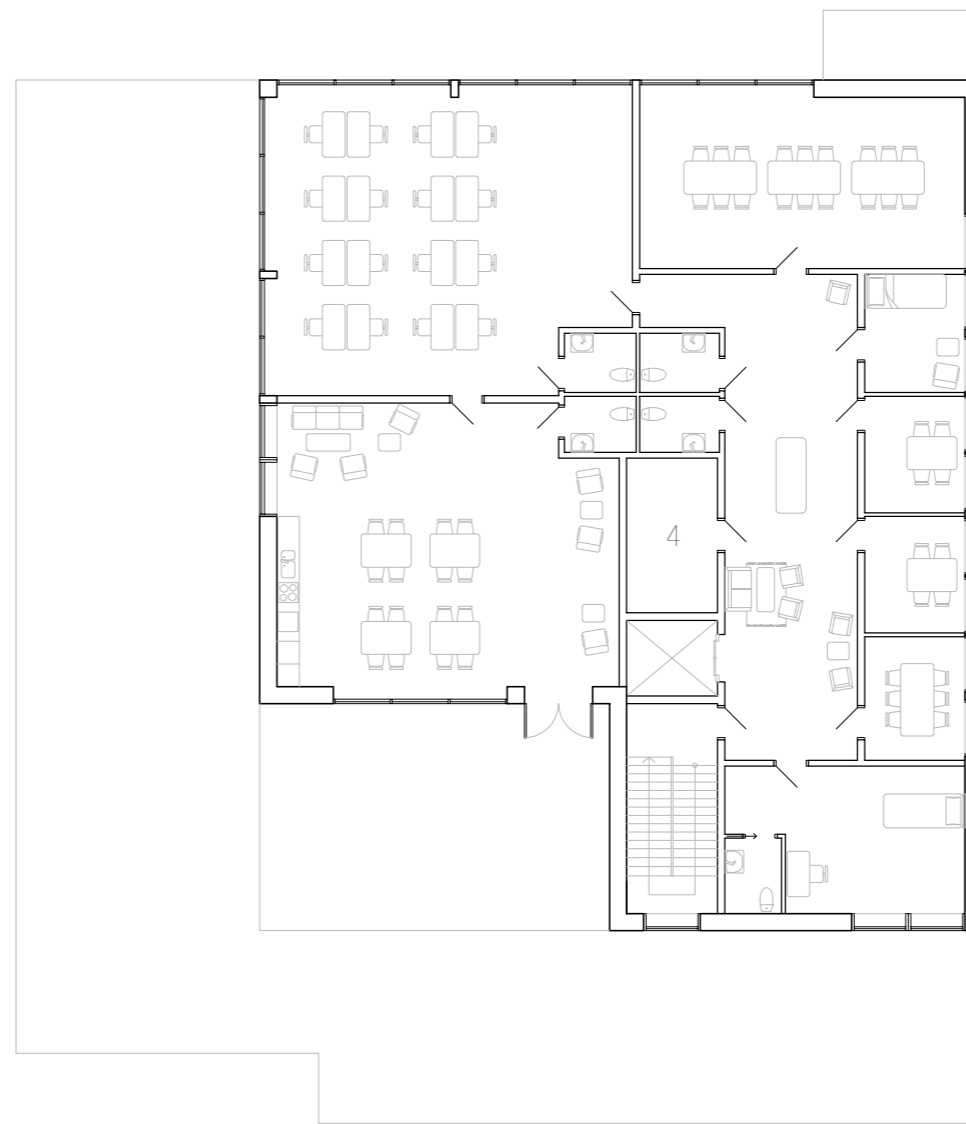
Most of the food are prepared here in the Town hall and delivered to the units. Also here on floor 1 there is all the rooms you need as a staff working here. With a large staff room connecting to a big balcony you can relax during your lunchbreak in the sun. The staff open office is overlooking the whole area so you still can have a connection to the people living here.





ENTRANCE

1:200

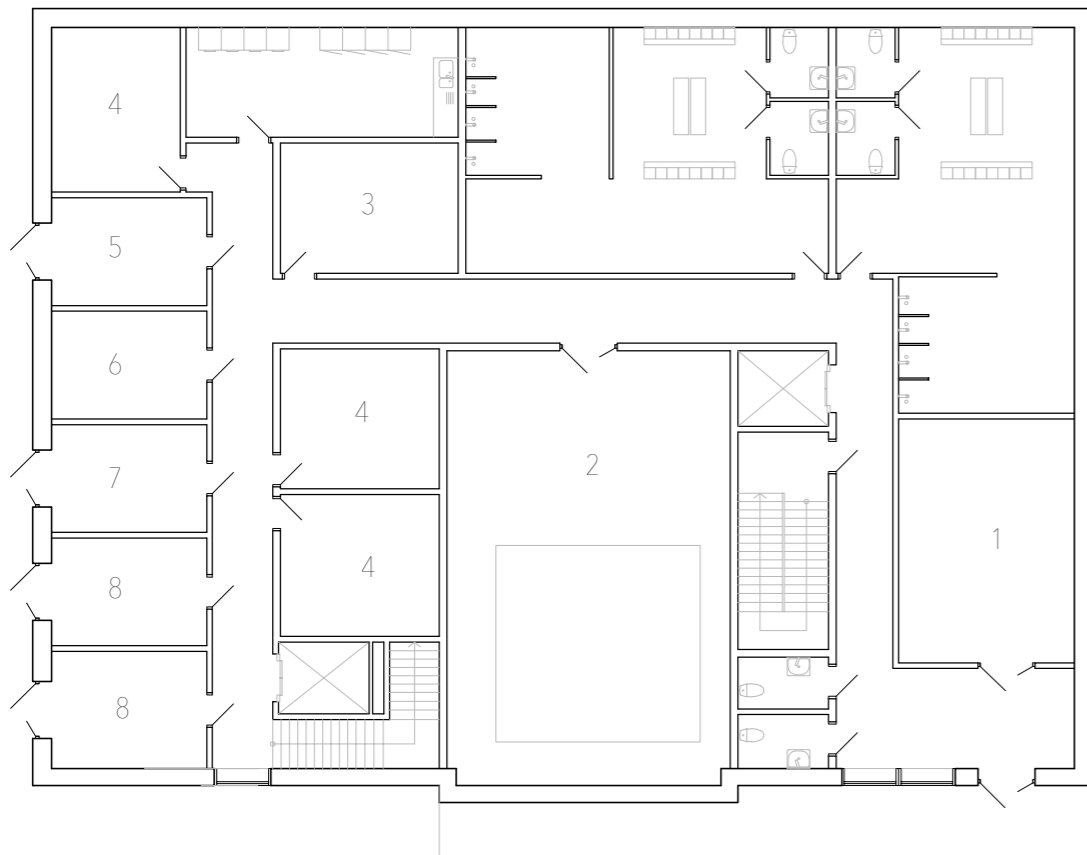


FLOOR 1

1:200

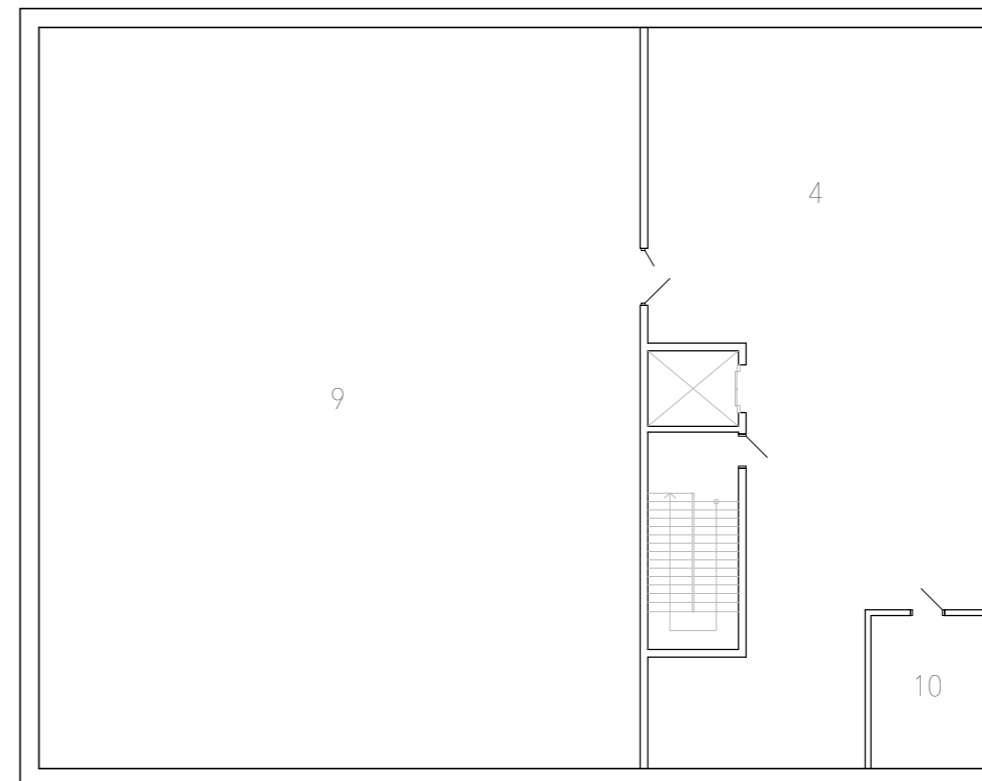
- 1. SWIMMING HALL
- 2. DISH ROOM
- 3. PREP. ROOM
- 4. STORAGE
- 5. FREEZER
- 6. FRIDGE





FLOOR 0

1:200

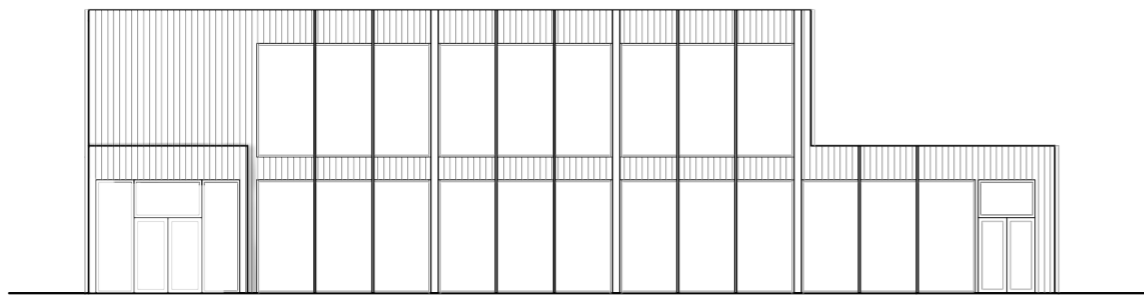


FLOOR -1

1:200

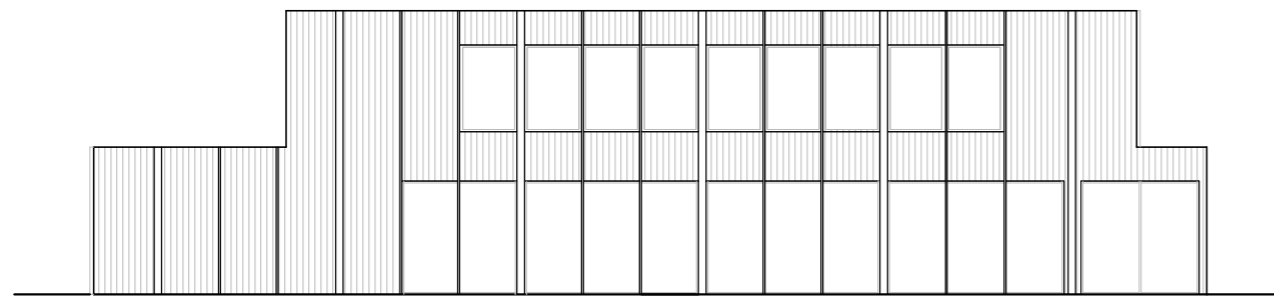
- 1. BIKE PARKING
- 2. POOL TEC.
- 3. CLEANING
- 4. STORAGE
- 5. HEATING
- 6. SPRINKLER
- 7. DELIVERY
- 8. WASTE
- 9. VENTILATION
- 10. ELECTRICITY





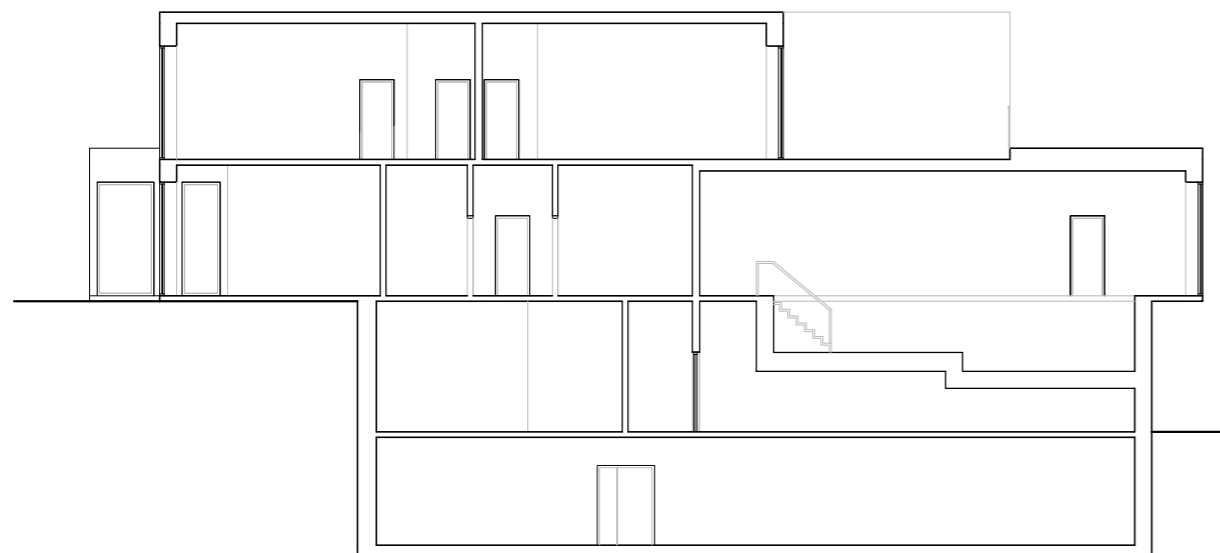
FACADE NORTH

1:200



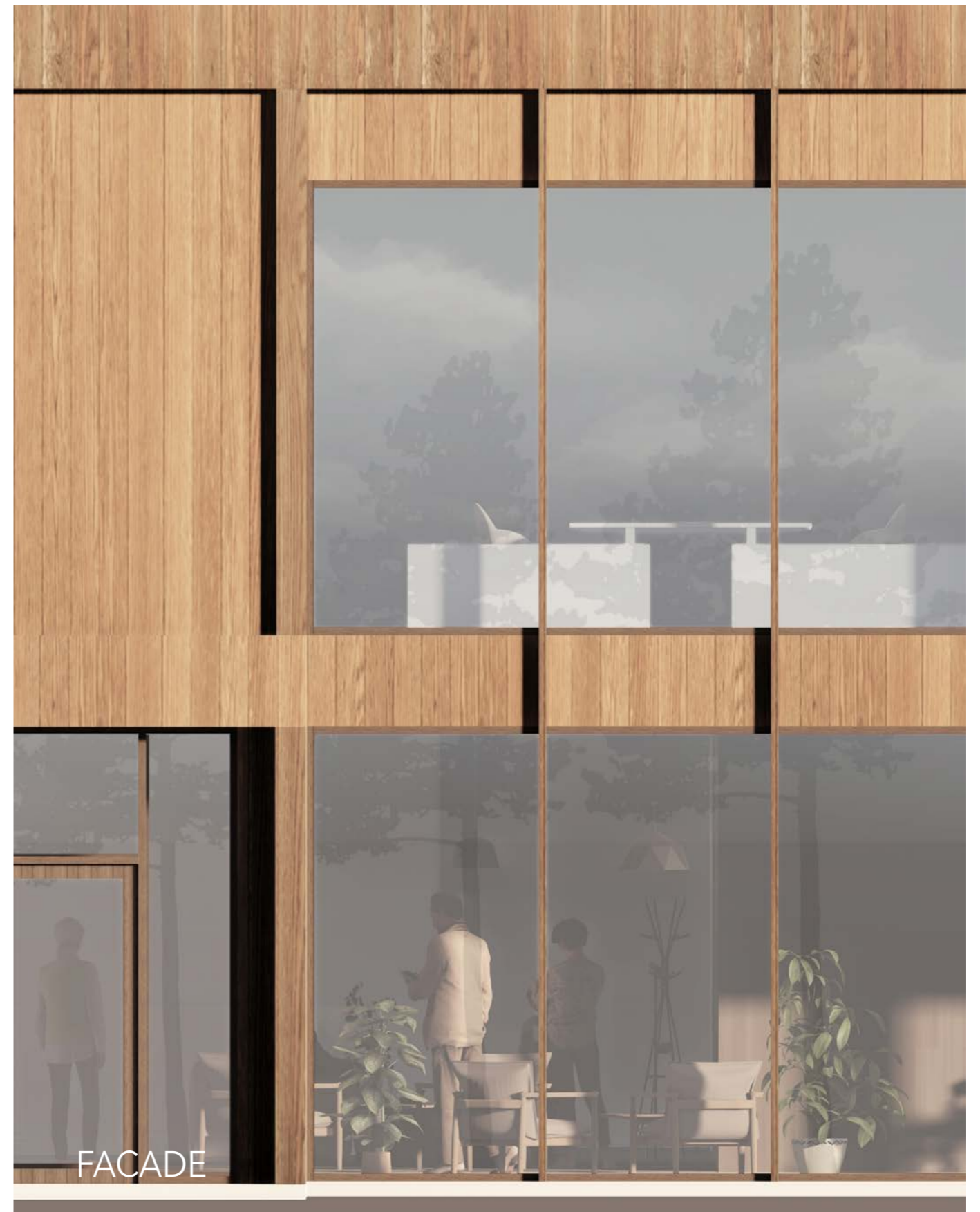
FACADE EAST

1:200



SECTION A-A

1:200



FACADE





LOBBY



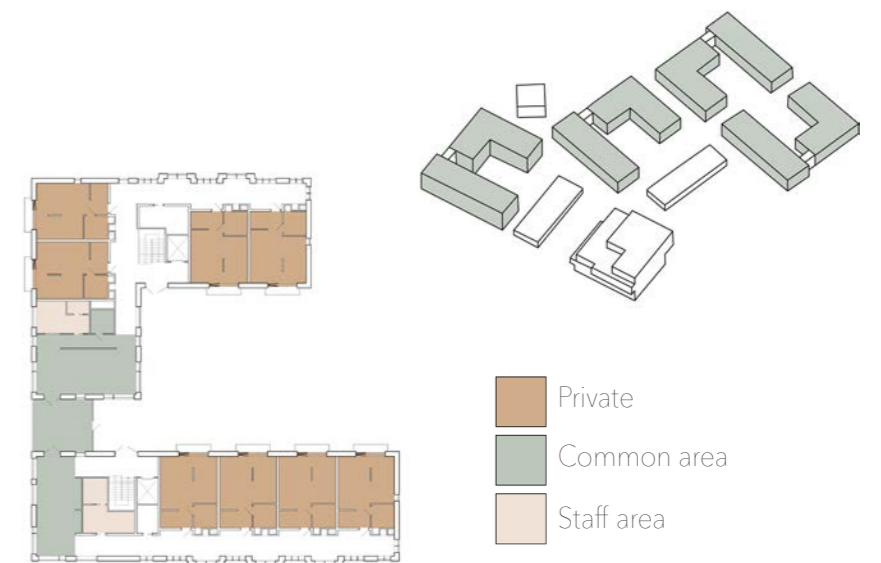
THE HOME

The homes, or the units, are all have the same shape and layout. The things that differs them is the brick colour and themed courtyards. This is to easy find the way home where you live. To keep the small scale village that we wanted we created one unit in two buildings that we then connected together with a glassed room.

In each unit there is a small office space for the staff. Here they have their own toilet and a window towards the dining room and to the outside.

The dining room is connected with the glassed room and the lounge. In the lounge you can sit and relax, read a book or play board games while enjoying the afternoon fika.

After socializing you will maybe go home to the private apartment. If you have trouble walking you can use the handrail in the hallway or take a break on the seating by the windows. There is a small seating in the end of the corridor where you can be more for yourself.





FLOOR 1

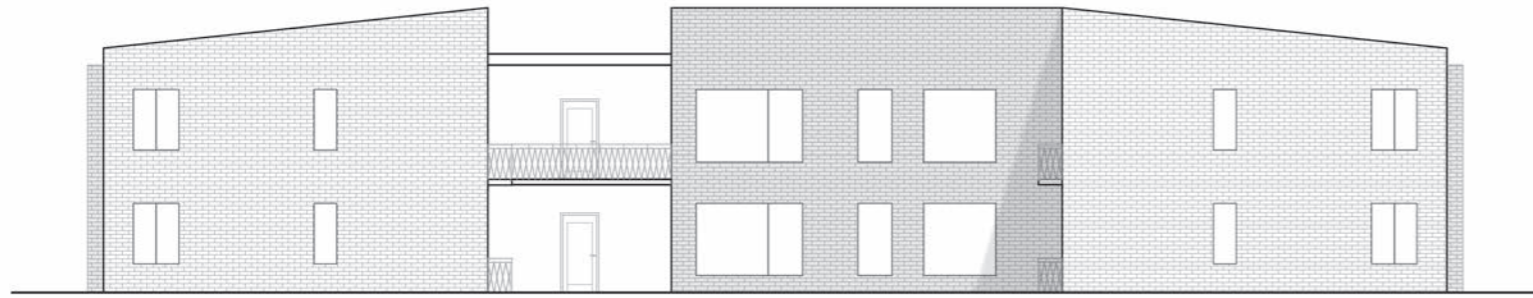
1:200



FLOOR 2

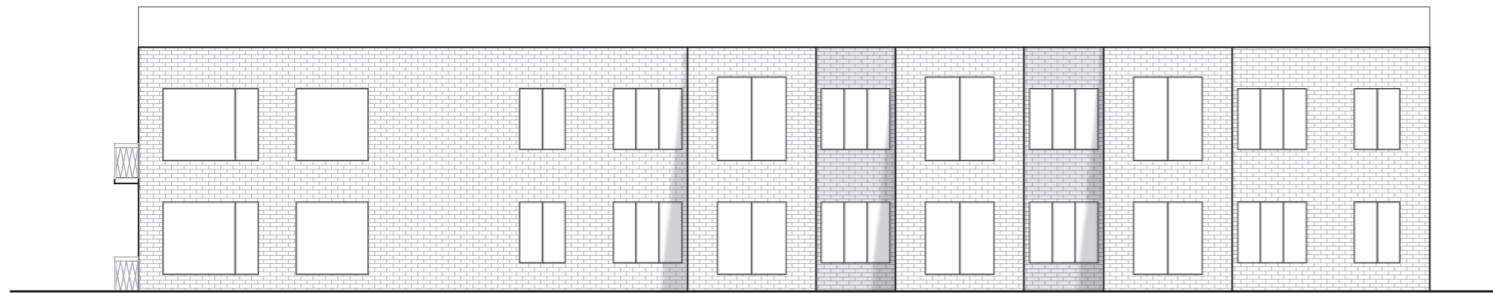
1:200





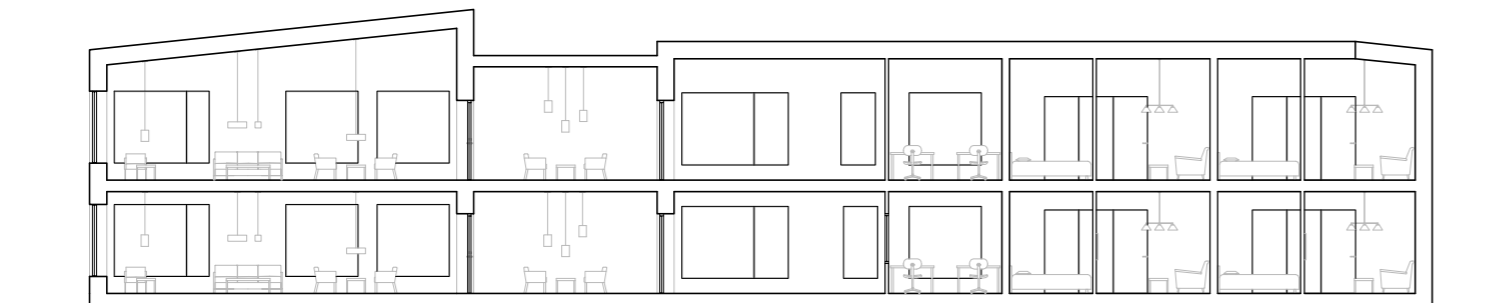
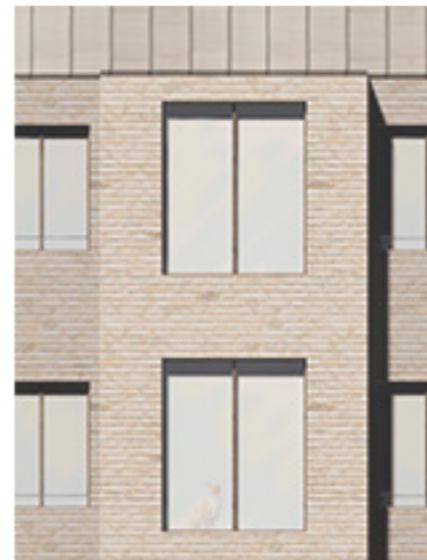
FACADE 1

1:200



FACADE 2

1:200



SECTION B-B

1:200

1:100





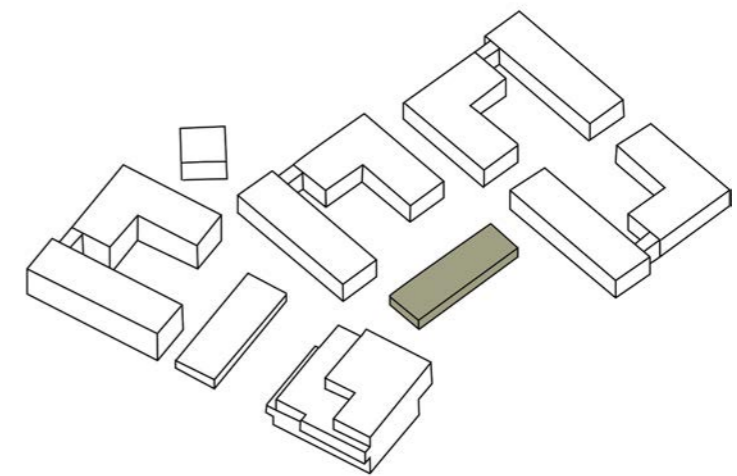
LOUNGE

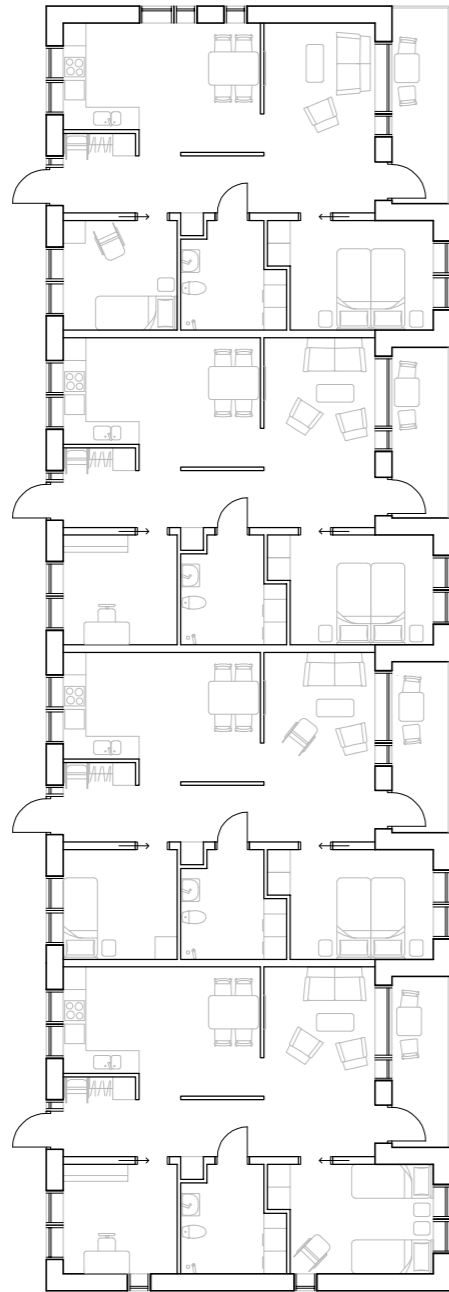


DINING ROOM

THE ROW HOUSE

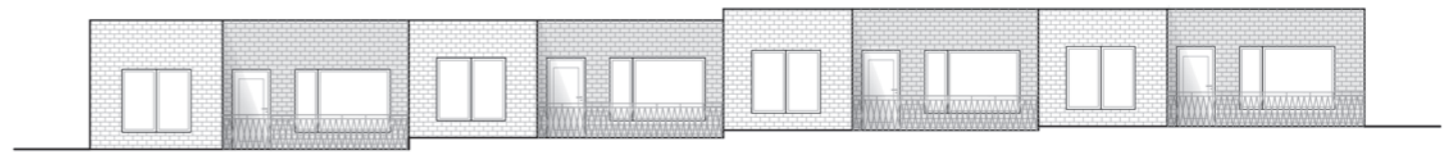
For the elderly who still want to live together but are in need of assistance, we have a separate building. The row house is one floor and have two bedrooms. One is larger and one is smaller and by the entrance. The small room can be used as an extra room for the elderly who might need more assistance. It can also be used as a guestroom or a working space. Here the couples can live a normal life with a little help from the village staff.





FLOOR PLAN

1:200



FACADE EAST

1:200



FACADE WEST

1:200

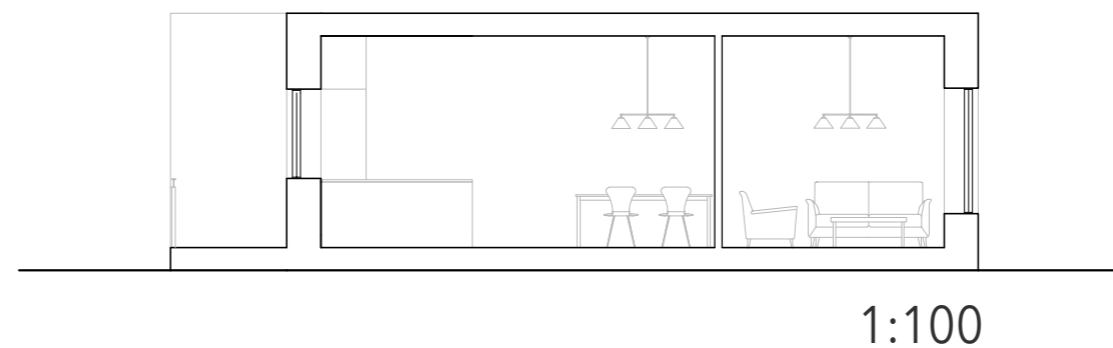
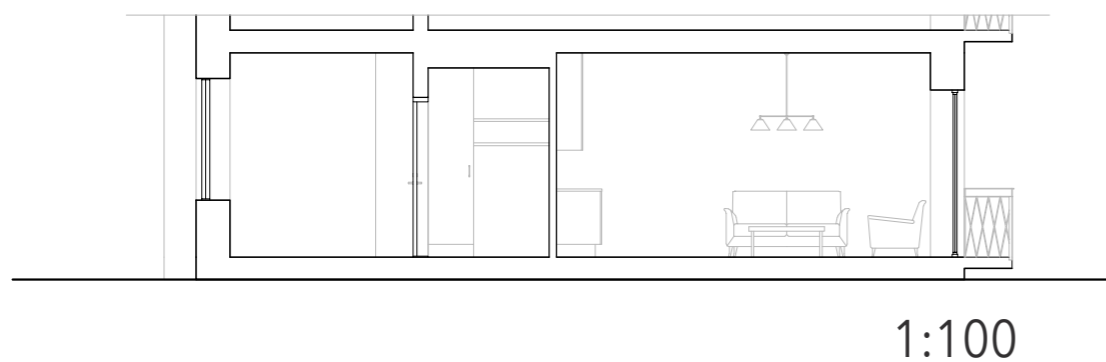
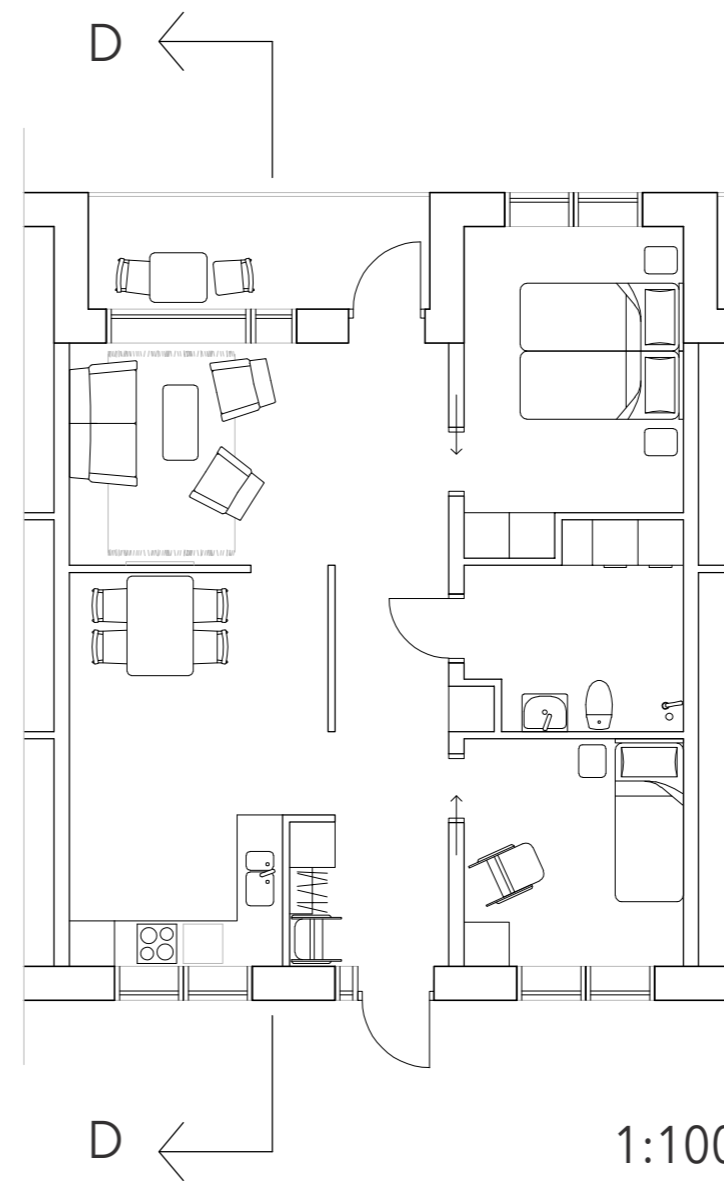
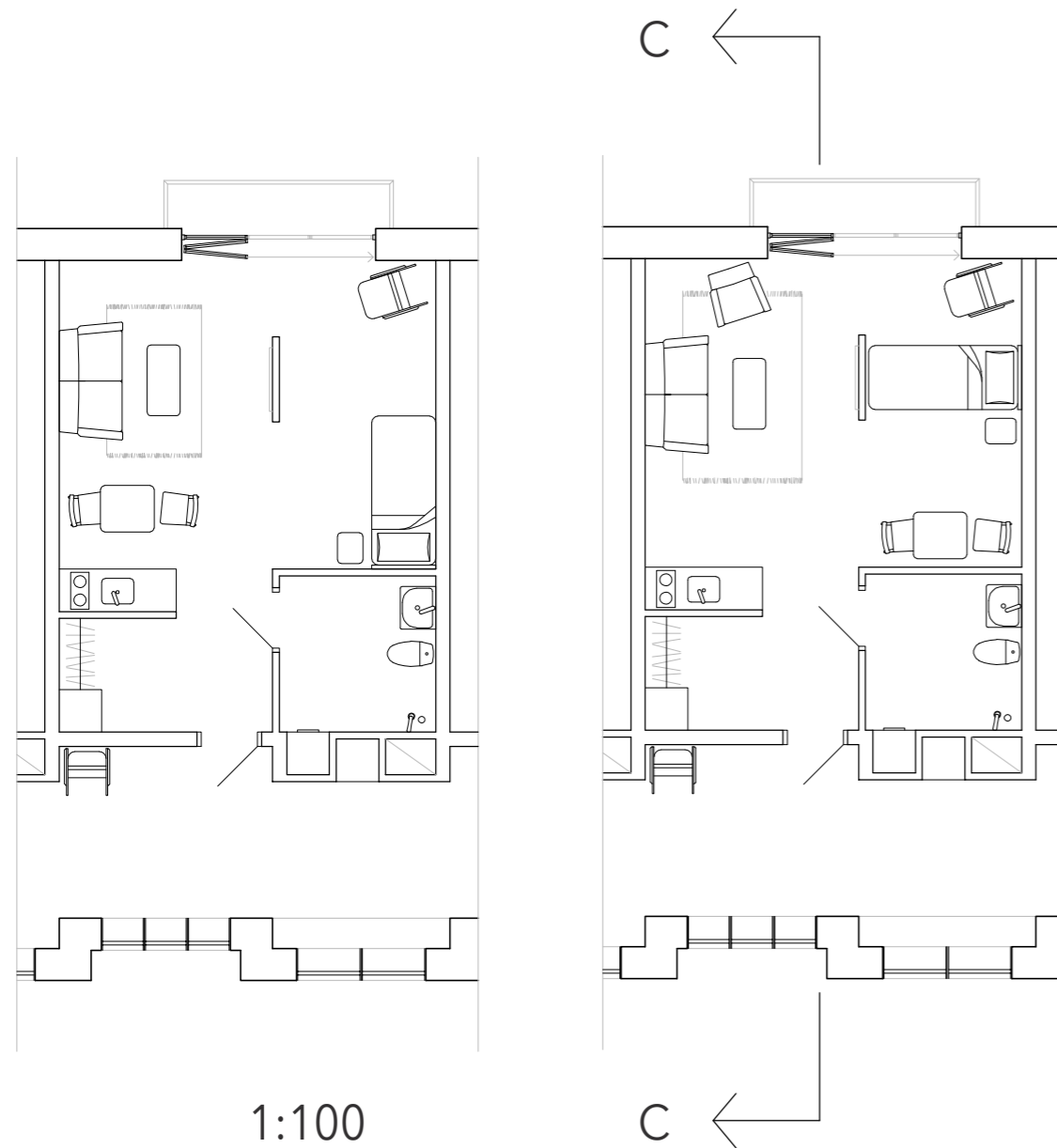


THE ROOM

The rooms are the most private in the village. All single apartments are 35 sqm and the row house couples apartment is 69 sqm.

The smaller apartments are flexible and have a small wall dividing the room making it easy to furnish it the way you like. On the small wall you can hang a TV or perhaps family photos. Each apartment has a bigger French balcony with large sliding glassed doors. Here you can take one step outside and still enjoy the outdoors even if you have difficulty leaving the apartment.

In the bigger apartment there is a larger kitchen and two bedrooms. One could be changed into a guestroom or a workspace. As well as in the small apartment there is a smaller wall where you can hang photos or put up a shelf. They also have a larger outdoor area facing the village park.





SINGLE APARTMENT

