



# HOME WITHIN THE GARDEN

Group 7 - Jin Qian, Natalie Isaksson, Ellen Ömmelspång  
AUT164 Future visions for healthcare, housing and work 1: Residential healthcare - housing for seniors  
2021

# BACKGROUND

Master plan, 1:2000

The site is located in Kärra in the north of Gothenburg. It's a neighborhood mainly developed in the early 70's with primary residential buildings around the center. The site we are planning for is close to the center where you find a few shops and restaurants. Next to the site is a preschool and closeby a elementary school. A pathway surrounds the site and closest to the site is mainly residential buildings in two stories. Kärra is now about to enter a phase of development and the task has been to design an assisted living for people with dementia with the concept of a dementia village as a role model for the project.

The aim has been to create a home-like living environment with the qualities of a village where the residents can live as normal and independent as possible but with the need of support. It has also been important to create a lively outdoor environment with different sceneries and to connect the village with its neighborhood by welcoming people to the public functions. An additional factor has been to design to minimize the spread of infection due to the pandemic aspects.



# CONCEPT & PROCESS

## Individuality



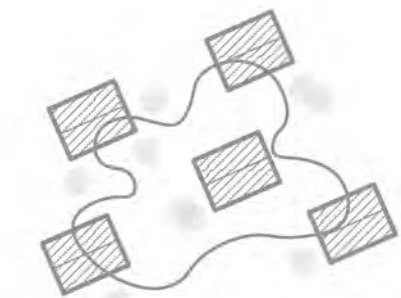
- Recognizable
- Flexible in use
- Variety of environments

## Nature

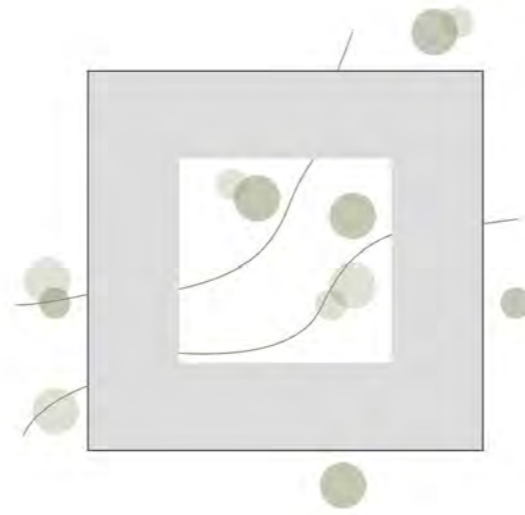


- Connection to nature
- Different sceneries
- Gradient in nature

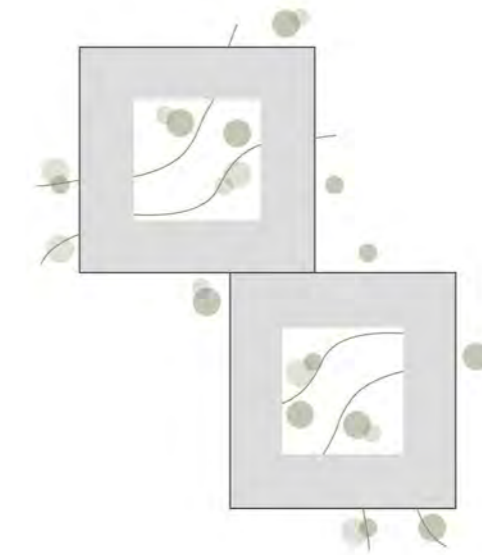
## Village



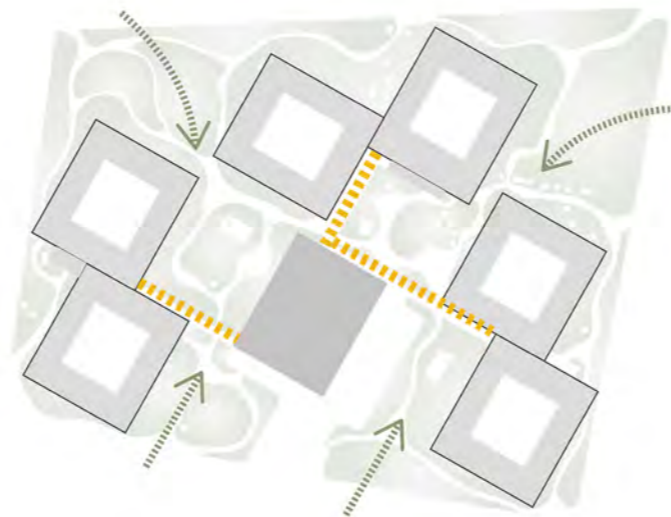
- Connection with the surroundings
- Detach
- Dynamic



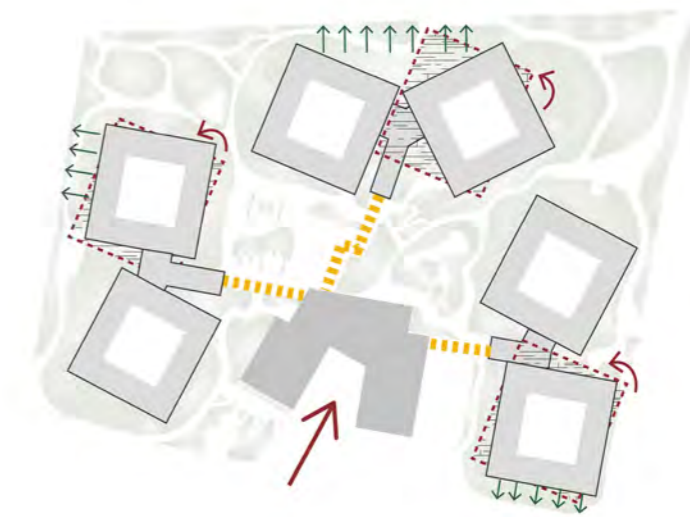
The unit was developed with three significant zones, the outdoor, the indoor and the indoor garden to create a limitless connection to the outdoors.



The units were put together two and two to make it easy to collaborate and share staff during the night shifts.



The blocks were placed at the site according to the terrain and connected with neutral indoor paths to a central commercial building that connects the different levels.



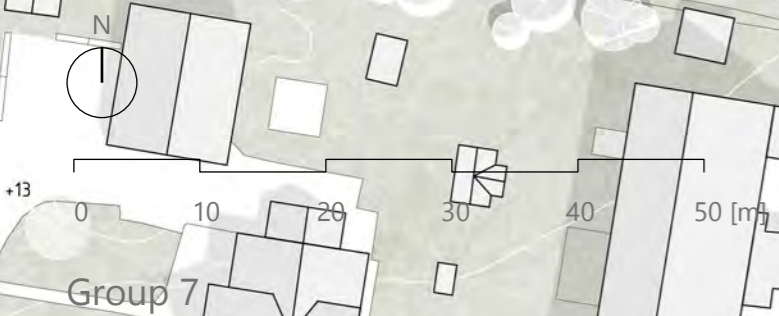
The blocks were later rotated to meet the street and the commercial building angled and shaped to be inviting.

# MASTER PLAN

Level 1, 1:600

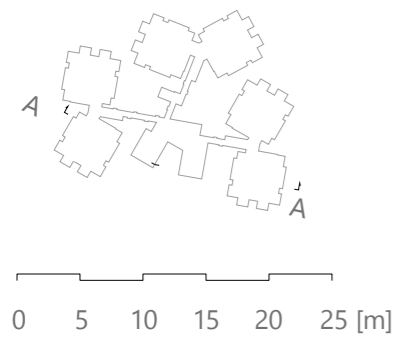
The village contains 96 apartments divided into 12 units with 8 apartments each. The units are connected two and two into blocks to make them more efficient as for example during night shifts but the units work fully fine alone if necessary.

The blocks are placed on different levels in the terrain and creates a village of two storey buildings that relates to the surrounding topology. The units connect through neutral corridors to a central commercial core that handles the differences in heights at the site.





Perspective from north-east



Group 7

SECTION A-A  
1:600



# FLOOR PLAN

Block A, First floor (Level 1), 1:400

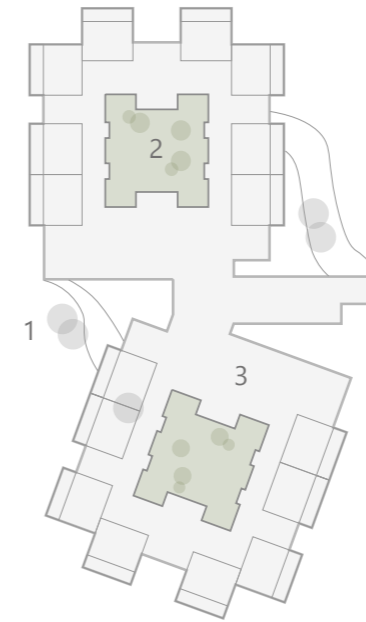
- 1. Communication
- 2. Staff administration
- 3. Entrance
- 4. Kitchen
- 5. Main living room
- 6. Balcony / Terrace
- 7. Storage
- 8. Cleaning room
- 9. WC
- 10. Waste room
- 11. Laundry
- 12. Indoor garden
- 13. Living room
- 14. Flexible space
- 15. Apartment



0 5 10 15 20 25 [m]

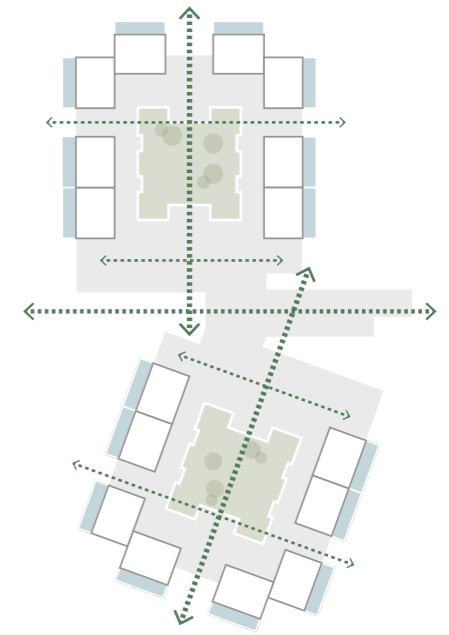


Three zones



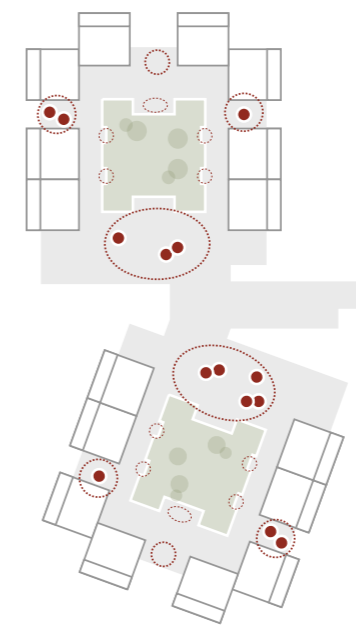
Three zones:  
1. Outdoor environment  
2. In-between environment  
3. Indoor environment

Sightlines



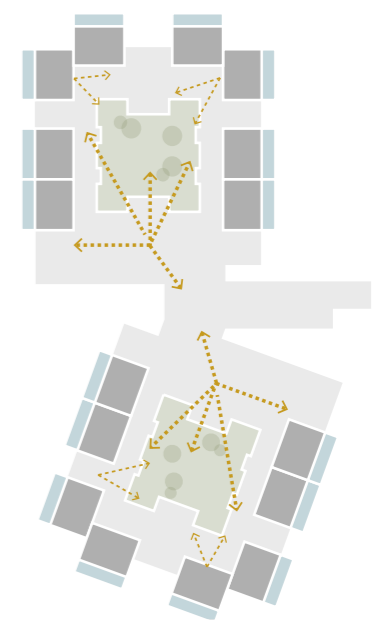
Connection between the indoor and outdoor environment

Public spaces



Different types of social spaces surrounding the garden

Overview



Overview from the apartments to the different social spaces

# FLOOR PLAN

Block B, First floor (Level 1), 1:400



0 5 10 15 20 25 [m]



Block C, Second floor (Level 1), 1:400

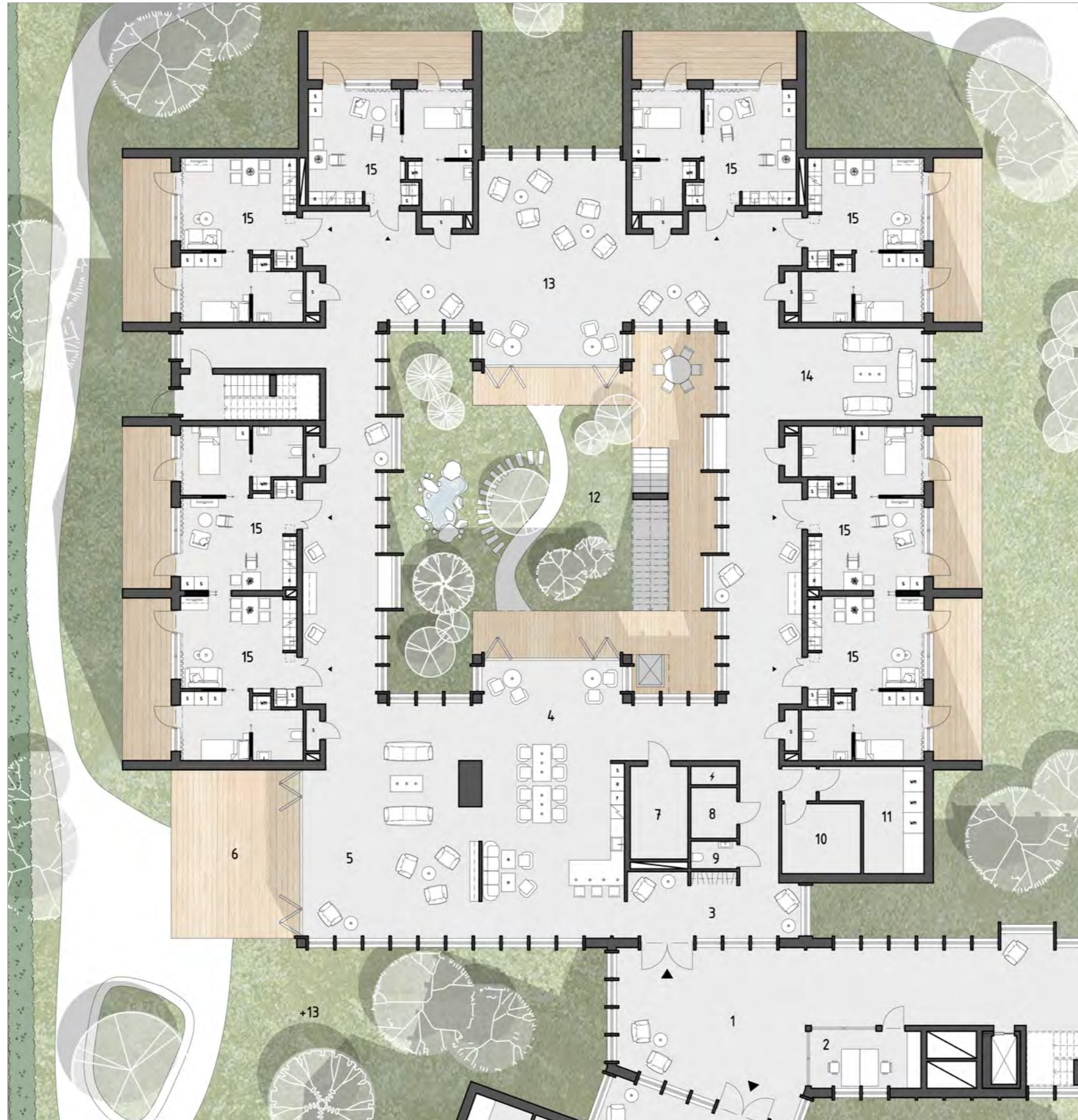


- 1. Communication
- 2. Staff administration
- 3. Entrance
- 4. Kitchen
- 5. Main living room
- 6. Balcony / Terrace
- 7. Storage
- 8. Cleaning room
- 9. WC
- 10. Waste room
- 11. Laundry
- 12. Indoor garden
- 13. Living room
- 14. Flexible space
- 15. Apartment

# FLOOR PLAN

Block A, Unit 2, First floor (Level 1), 1:200

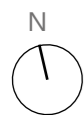
1. Communication
2. Staff administration
3. Entrance
4. Kitchen
5. Main living room
6. Balcony / Terrace
7. Storage
8. Cleaning room
9. WC
10. Waste room
11. Laundry
12. Indoor garden
13. Living room
14. Flexible space
15. Apartment



On the way to a unit you are welcomed by a lounge area shared by two units. To this area a small administration room is connected to make it easier for staff to collaborate and to have close access to a small office. When entering the unit you have a small coat hanger for guests and can then enter the kitchen and the main living room. These social spaces give you a great overview of the whole unit.

The units have multiple social spaces to fulfill the different needs of the tenant, there are smaller social spaces if you wish to be alone and two bigger ones in order to provide social spaces close to all the apartments. When you step out from every apartment you are greeted with a view of the indoor garden to give the residents a closeness to nature and to enhance the feeling of having your own garden.

Every unit also provides a flexible space for the residents that could be used differently depending on the needs over time and in the different units. The flexible space could be closed off as a separate room such as a television room or a workout room or just as a space for other activities. This space plays an important role if the unit needs to be closed during a pandemic because it provides the unit with a space to arrange activities within the unit.



0 2 4 6 8 10 [m]





## The Kitchen

In the social kitchen the residents can sit down, smell the new freshly brewed coffee or bake a cake together.  
Here is space to celebrate birthdays and other festivities together.  
From the kitchen it's possible to open the wide sliding doors and let the kitchen continue out and become one with the indoor garden.  
In winter time you can make a fire in the wide and warm fireplace.



### The Main Living Room

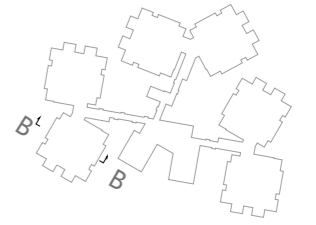
On the other side of the fireplace and bookshelf the residents can be social in the main living room.  
By opening the big sliding doors to the terrace you can directly step into the gardens.  
In the living room you have a constant visual connection to both the indoor garden and the outdoor environment.

# SECTION B-B

Block A, Unit 1, 1:100

The village contains three kinds of zones in different scales. The first zone is the outdoor spaces, where the residents can be outside in the fresh air to garden, walk around or enjoy the different seasons. The outdoor spaces and the landscape gives the residents a variety of views from their apartments and public spaces.

In each block there is an indoor garden, zone 2, where the residents can be outside but in the shelter from rain and wind. These in-between environments give the residents the opportunity to be outside and surrounded by nature all year around. The third zone is the warm and homey indoor environments where the residents can be in the shelter from the outdoors, either in their apartment or in the company of their neighbours and staff.



0 1 2 3 4 5 [m]

# FLOOR PLAN

Apartment, 1:100

The wide apartments provide the rooms with lots of daylight and a generous balcony. The flexible rooms make it possible for different spatial organizations and personalization. It's possible to open up in between two apartments (type 1) to make a couple apartments. The apartment also has a natural division between the private and public areas.



0 1 2 3 4 5 [m]

I



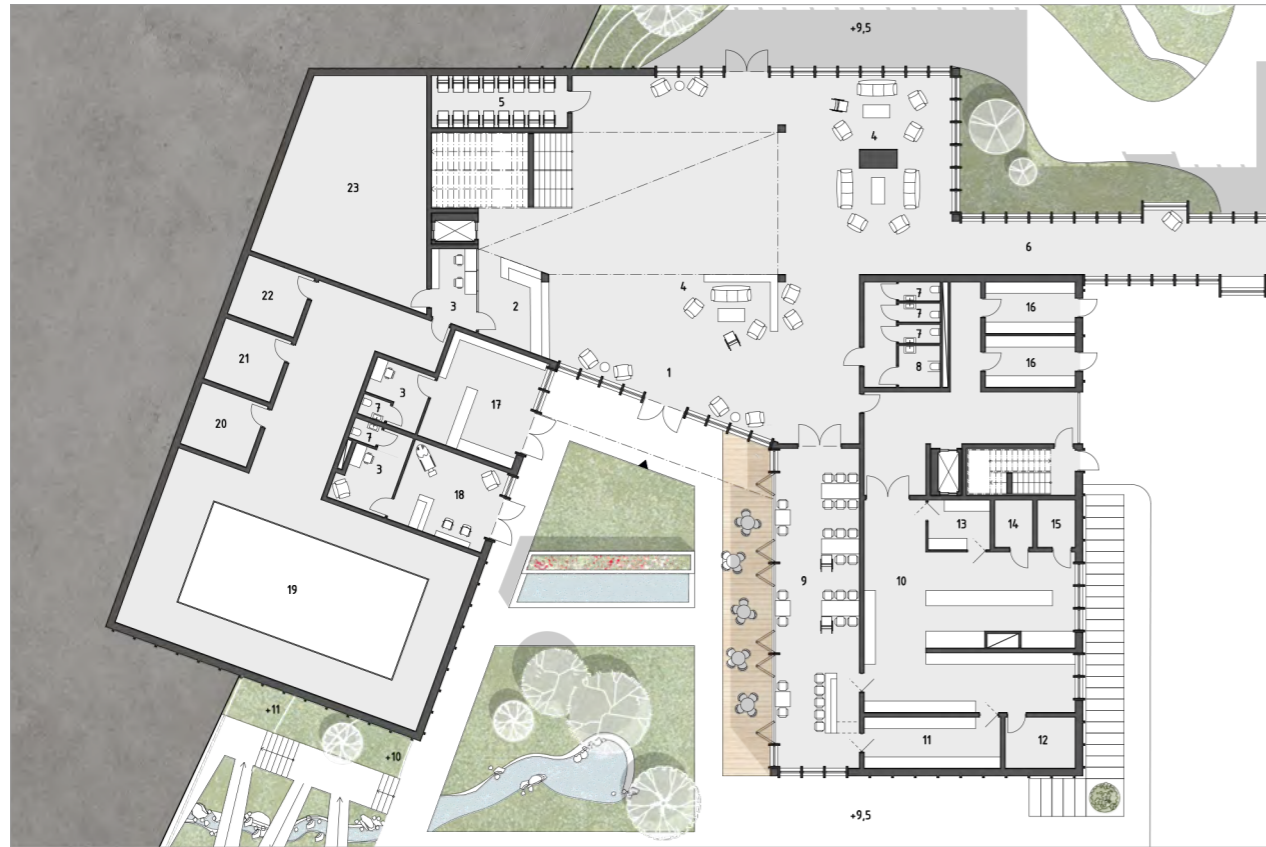
II



# FLOOR PLAN

Commercial building, 1:400

First floor (Level 0)



Second floor (Level 1)



- 1 Entrance
- 2 Reception
- 3 Back office
- 4 Social space
- 5 Wheelchair storage
- 6 Communication
- 7 WC
- 8 Accessible WC
- 9 Restaurant
- 10 Kitchen
- 11 Dish room
- 12 Storage
- 13 Preparation room
- 14 Fridge room
- 15 Freezer room
- 16 Waste room
- 17 Grocery store
- 18 Hairdresser
- 19 Technical pool area
- 20 Incoming electricity
- 21 Incoming district heating
- 22 Sprinkler room

Ventilation Basement

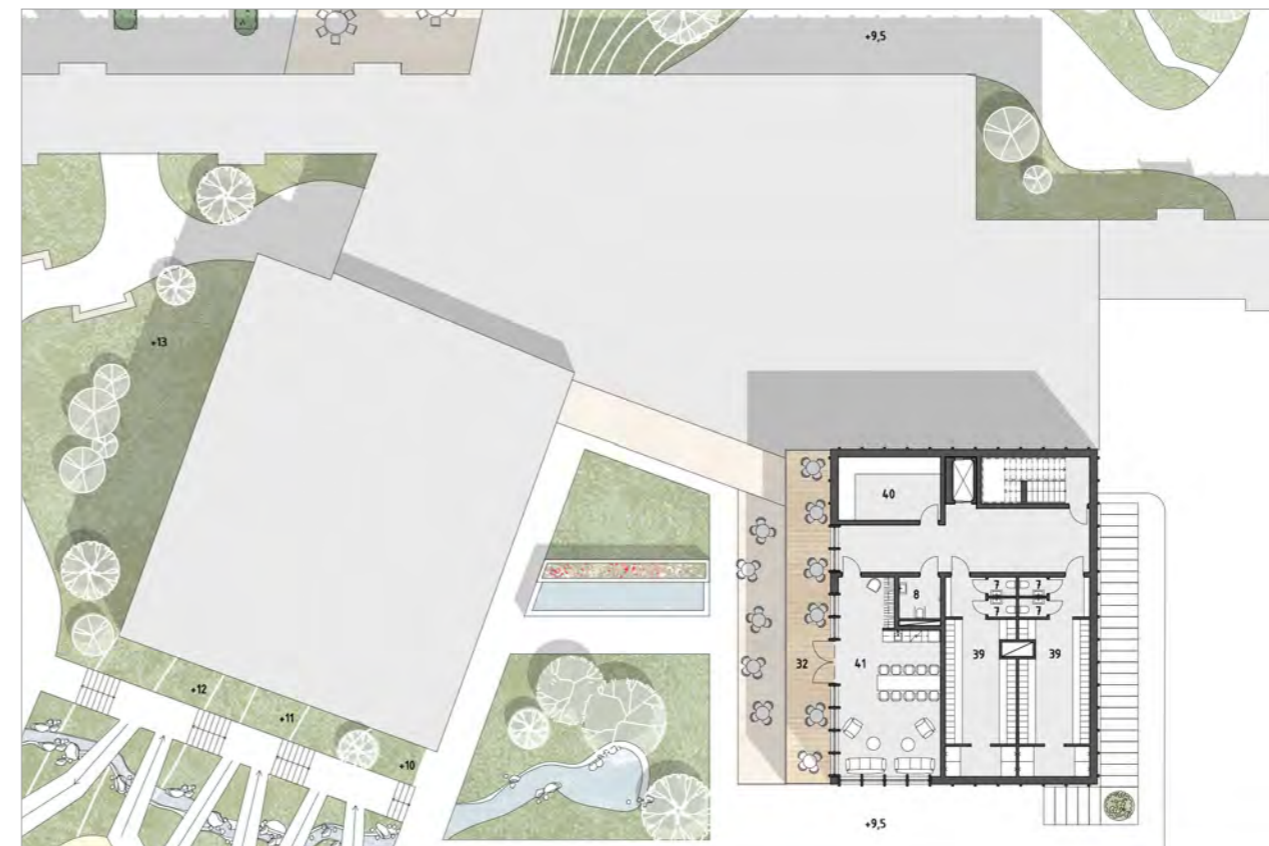


The ventilation space is divided to every block at basement level with a central ventilation space in the dark space of the commercial.

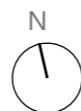
0 5 10 15 20 25 [m]

The commercial building is placed as a central and welcoming core at the site. The building opens up to the city with its urban garden and square in front of the entrance and makes the site lively and social. It's a building in split-levels to handle the height differences and to connect the different blocks and gardens. The building acts like a big common living room for the residents but also contains a small restaurant, a shop, a hairdresser, a pool and relaxation area to fulfill the needs of the residents.

Third floor (Level 2)



- 23 Ventilation
- 24 Conference room
- 25 Lounge
- 26 Drug storage
- 27 Storage, aid
- 28 Open office space
- 29 Office for the managers
- 30 Cleaning room
- 31 Meeting room
- 32 Balcony
- 33 Gym
- 34 Pool lounge
- 35 Changing room
- 36 Pool area
- 37 Massage room
- 38 Sauna
- 39 Staff changing room
- 40 Laundry
- 41 Staff room



SECTION  
Commercial building, 1:150

SECTION C-C



SECTION D-D



0 1 2 3 4 5 [m]



### The Entrance

In Front of the entrance people can meet in the urban garden, go to the restaurant or the stores.  
It's an inviting place to welcome visitors and the residents.  
Here in the surrounding of nature and the calm sound of water there is space to sit down and wait for transportation or guests.

# GARDEN

1:400



Within the village there are three main gardens. The first one to discover is the urban garden in the south that invites people from the neighborhood with its social character and functions such as a small shop, a hairdresser and a playground for the kids. This urban garden strengthens the connection to both the nearby school and preschool by its playground and creates intergenerational connections by inviting children to come and play. The sloping terrain in this garden is handled with a ramp and stairs to make the site accessible and along the stairs is a stream that can collect the rainwater to avoid flooding. The second garden is the calm garden with its sloping terrain and pouring water. The pond in this garden handles the water if heavy rainfall occurs and the garden has a more wild vegetation and natural feeling to it. The calm garden merges

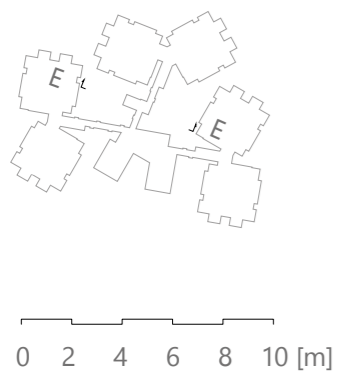
together with the wilder nature in the north-east where we have chosen to preserve, renovate and move the small red shed that could be used as storage for outdoor furniture. The third garden is the farming garden where the residents can be more active and plant in the high flower boxes, feed the chickens or spend time in the green house. The farming garden and the calm garden are both more secluded and private to the residents to make them feel safe in their village. The different gardens provide the site with different sceneries, views and activities to easier find your way home. Throughout the site, looping pathways lead you both around the whole site and in smaller loops within the gardens. This makes it possible to walk around in a variety of ways without hitting a dead end.





Perspective of the farming garden

SECTION E-E  
1:300



A view of the flourishing farming garden where the residents can plant in the high flower beds without needing to bend over or feed the chickens that live around the small chicken house. Here you can see the greenhouse in the far end where the residents can go to plant flowers for their balcony and apartment or just sit down in the warmer climate.



# ELEVATION

1:300

North



East



0 2 4 6 8 10 [m]

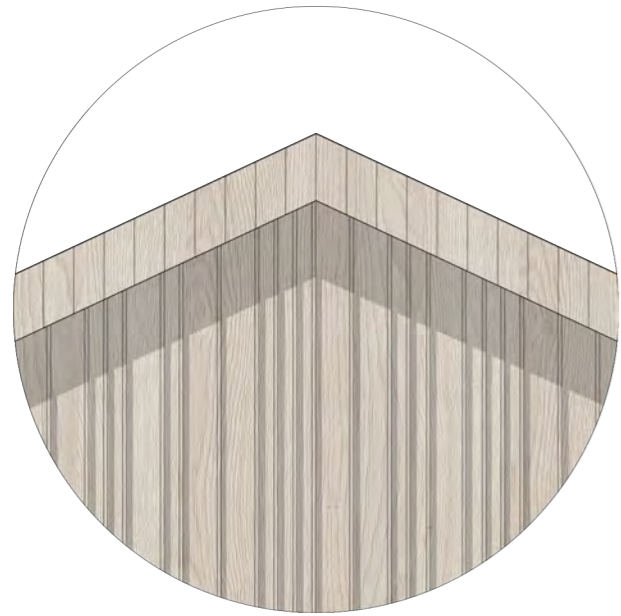
Group 7

# ELEVATION

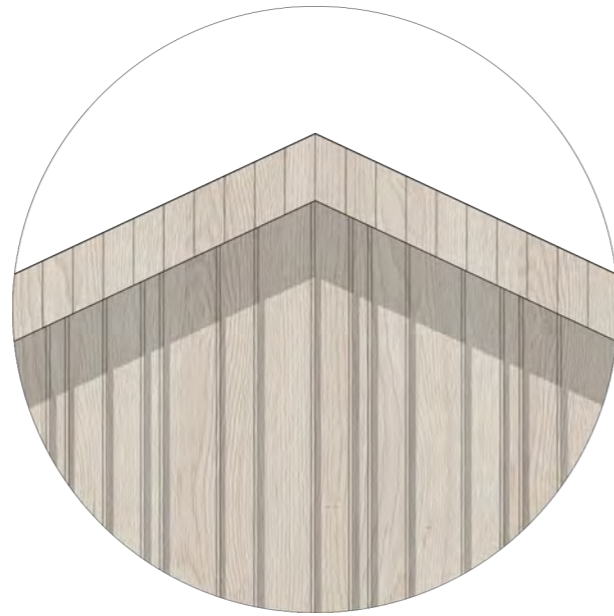
1:300

To create a more dynamic feeling to the site the different blocks have slightly different exterior cladding. The irregular spacing between the panels are wider and denser to create a more characteristic expression for each block.

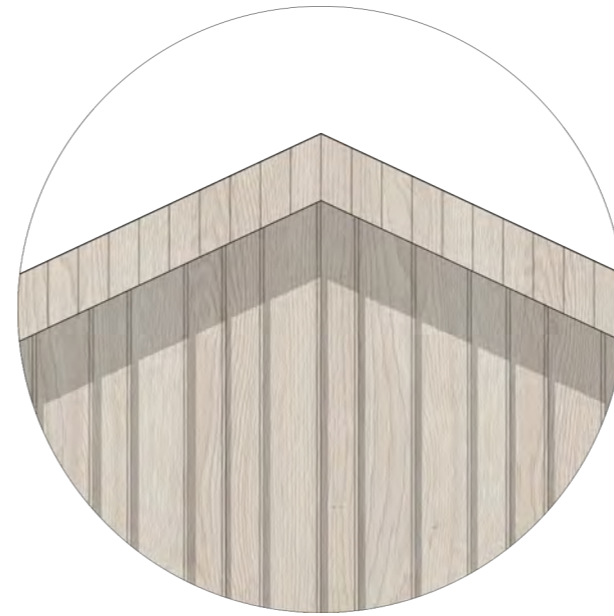
In order to distinguish the private units from the more public commercial building the material of the façade differs but with the same overall characteristics. The commercial building has a brick façade with elements of wood while the units have a totally wooden façade.



Apartment Type I



Apartment Type II



Apartment Type III



Public - Commercial



Private - Units, Corridors

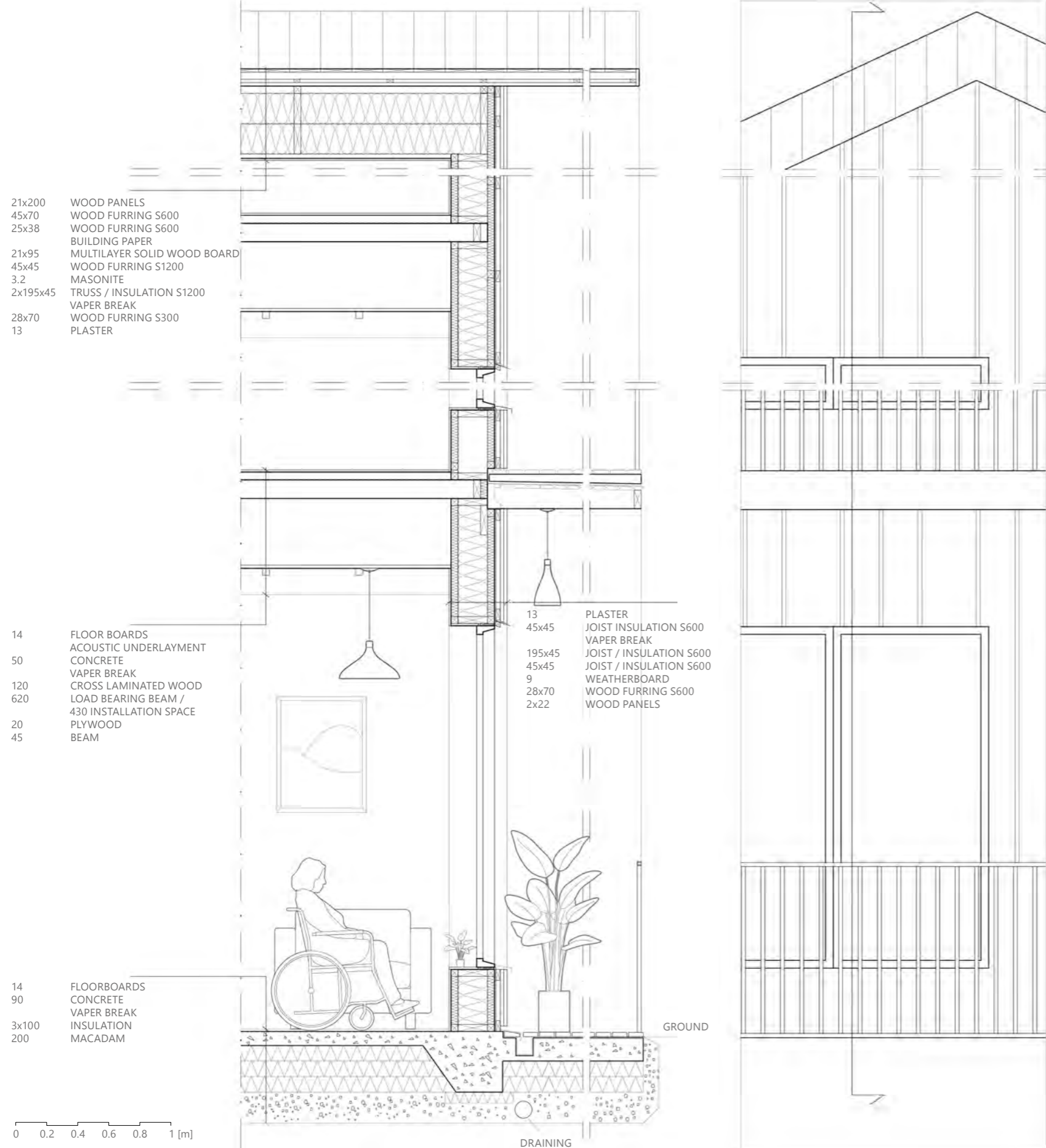
South



0 2 4 6 8 10 [m]

# CONSTRUCTION

1:30



## FINDING MY WAY HOME

### THEMED CORRIDOR



To simplify the wayfinding the three corridors have different themes. The themes are garden, music and library so you easily recognise the corridor that leads to your block. The garden corridor is full of plants and also connected to the greenhouse, in the library corridor there are seating places and bookshelves leading your way home and in the music corridor there are spots where you can sit down and listen to music.

### FRAMED VIEW



On the way to the units there are several framing windows to pass by that show specific views of the different gardens to make you recognize the specific view that frames the way to your unit.

### MEMORY BOX



When arriving at your unit you will recognize your apartment by its personal appearance. In front of every apartment door is a space for your own chair, a book shelf and a memory box where you can put some of your own belongings to recognize where you live.