



Temple of Time

Residential Healthcare Architecture
Chalmers University of Technology
E. Norden, H. Wrennö, P. Linger

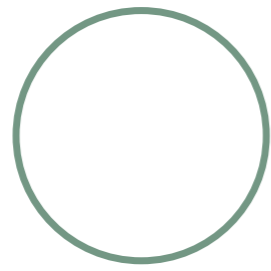
Introduction	3
Concept	4
Process	5
Situational Plan	6
Entrance Level	7
Public Entrance	8 - 9
The Spring	10 - 11
The Garden	12 -14
Residential Level	15
Residential Sanctum	16 - 17
Apartments	18 - 19
Facades	20 - 21

The Temple of Time is an architectural healthcare project that aims to enhance the living conditions for people with dementia.

The project entails planning of a residential care building carrying housing for 88 residences including necessary facilities, staff spaces and public functions.

The site resides in a naturally lush landscape located on the southern side of Hisingen, in close proximity to central Gothenburg. Sitting on the edge of Bräcke park, the lot forms an entrance to the Bräcke Diakoni organization grounds.

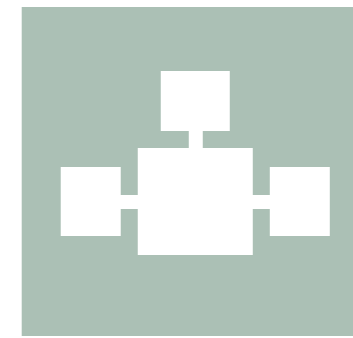




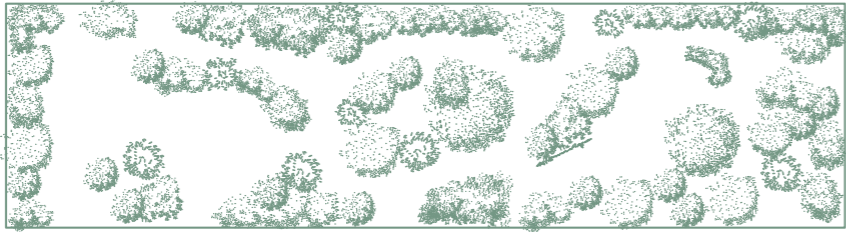
Loop of wandering



Grades of Intimacy



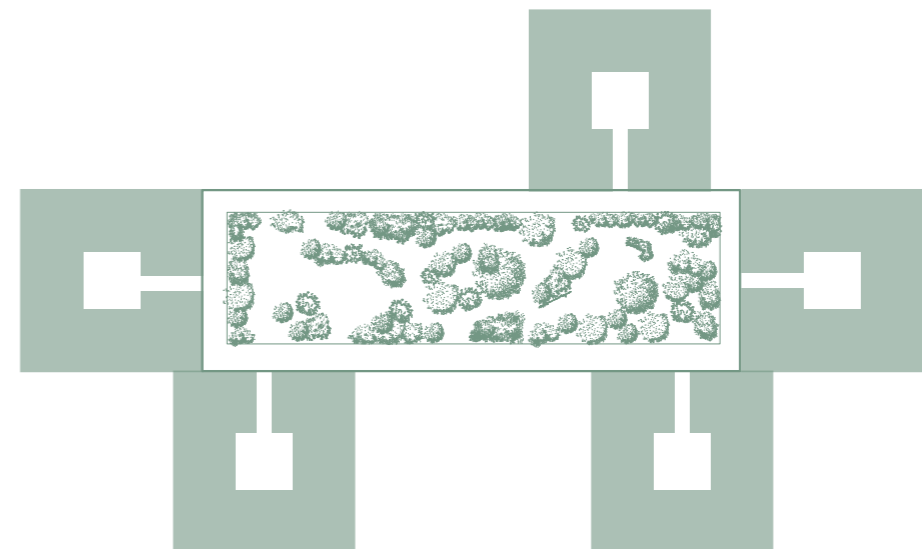
Inner World with Hidden Gems



The Garden

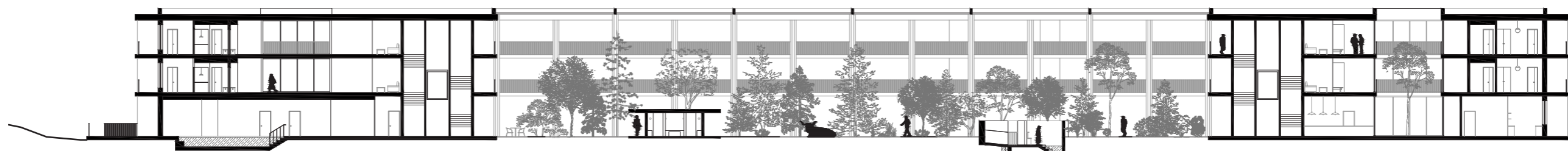
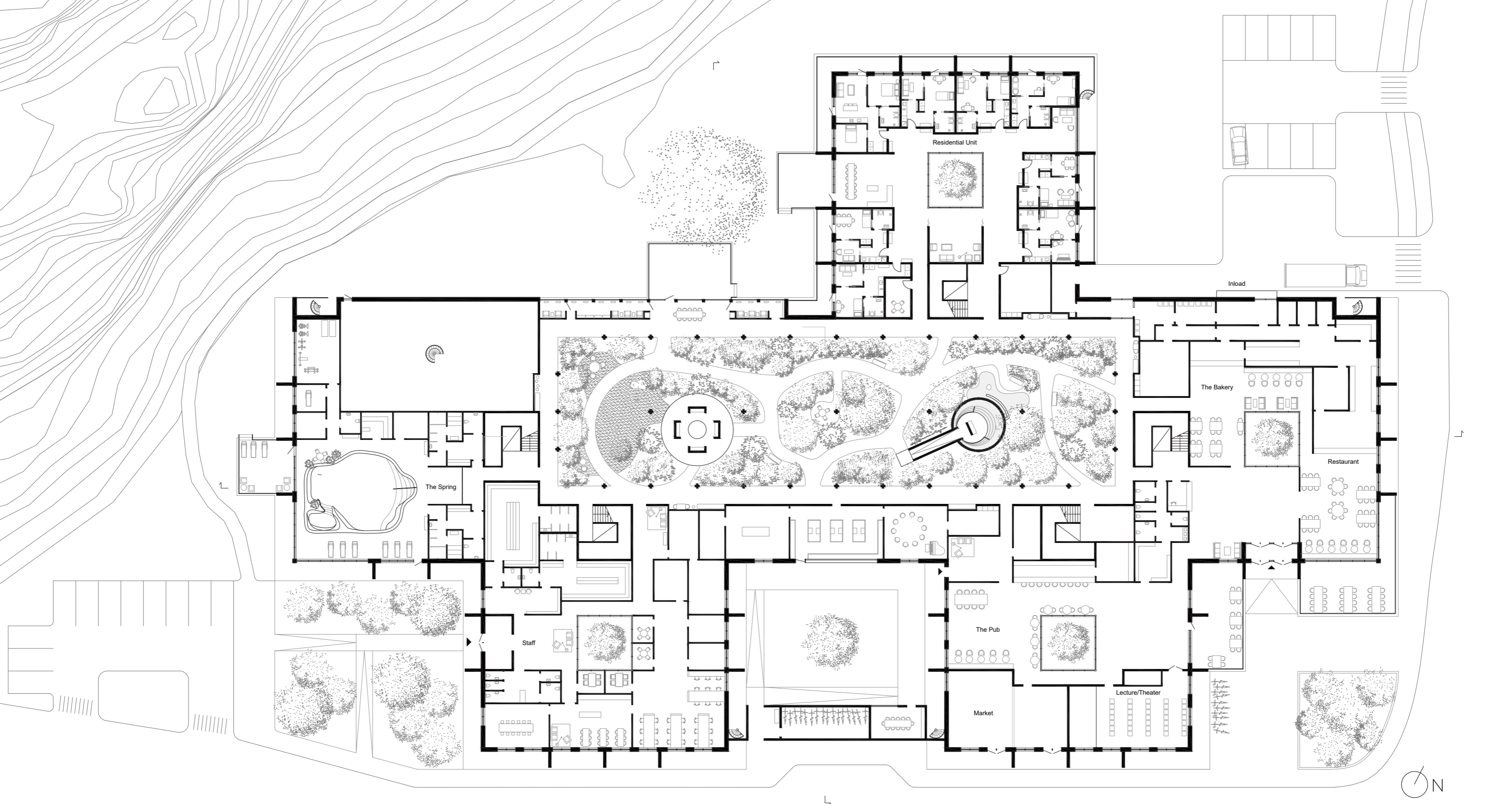


Independent Unit



Units Enclosing The Garden

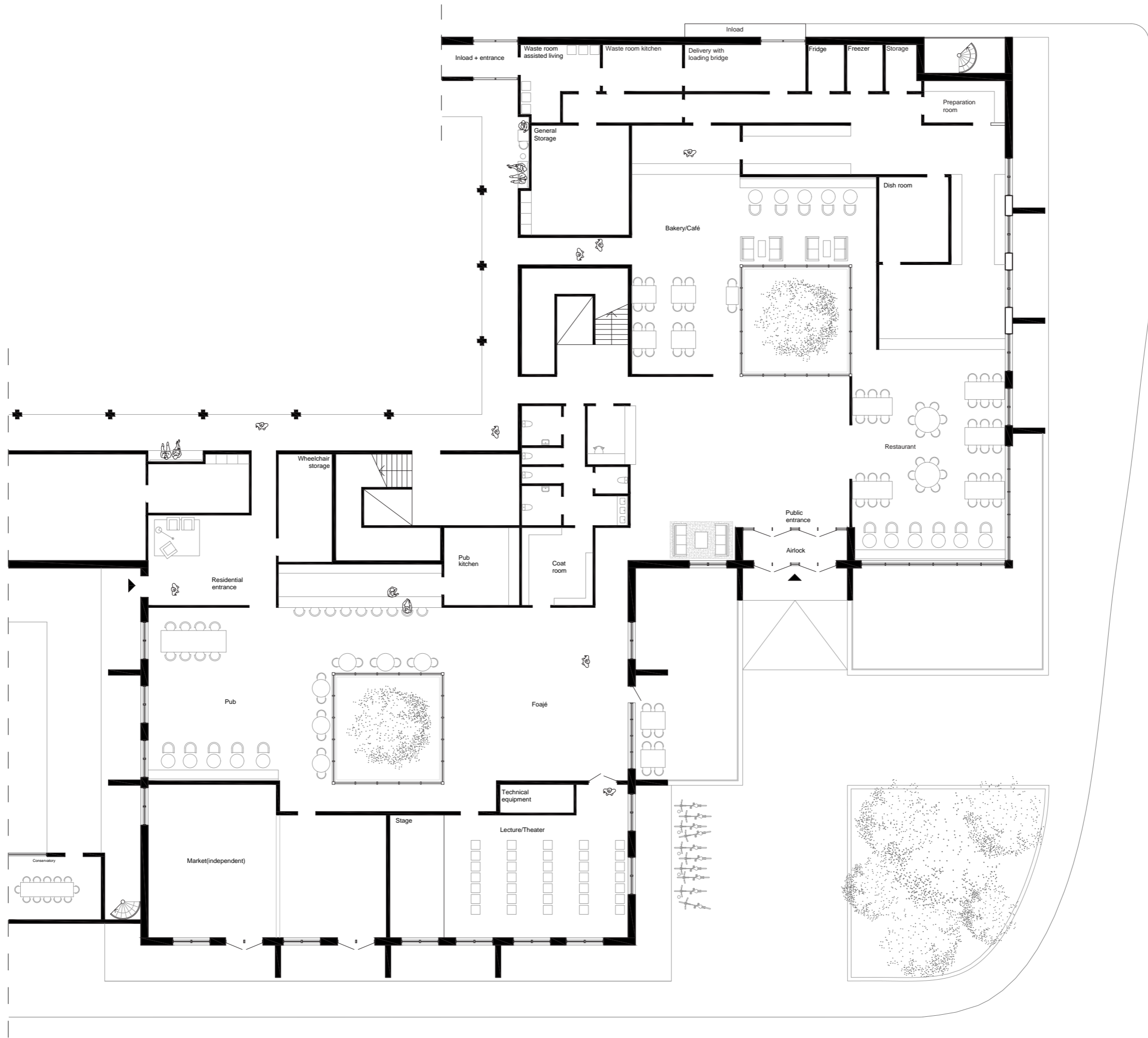
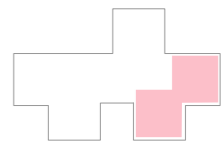




Entrance Level

Scale 1:400 (A3)



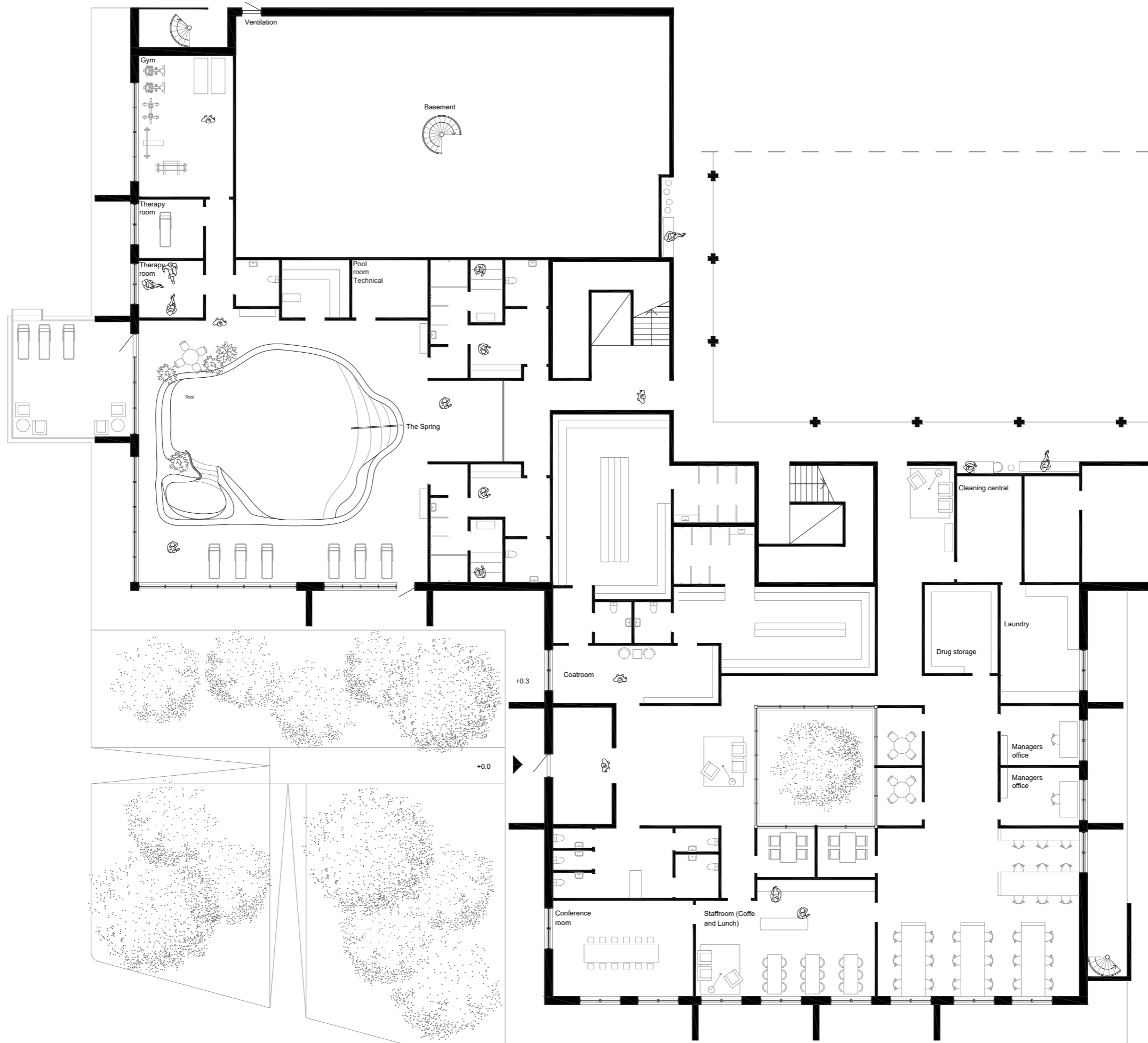
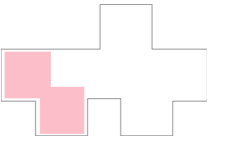


Public Entrance

Scale 1:200 (A3) 5m 0 10

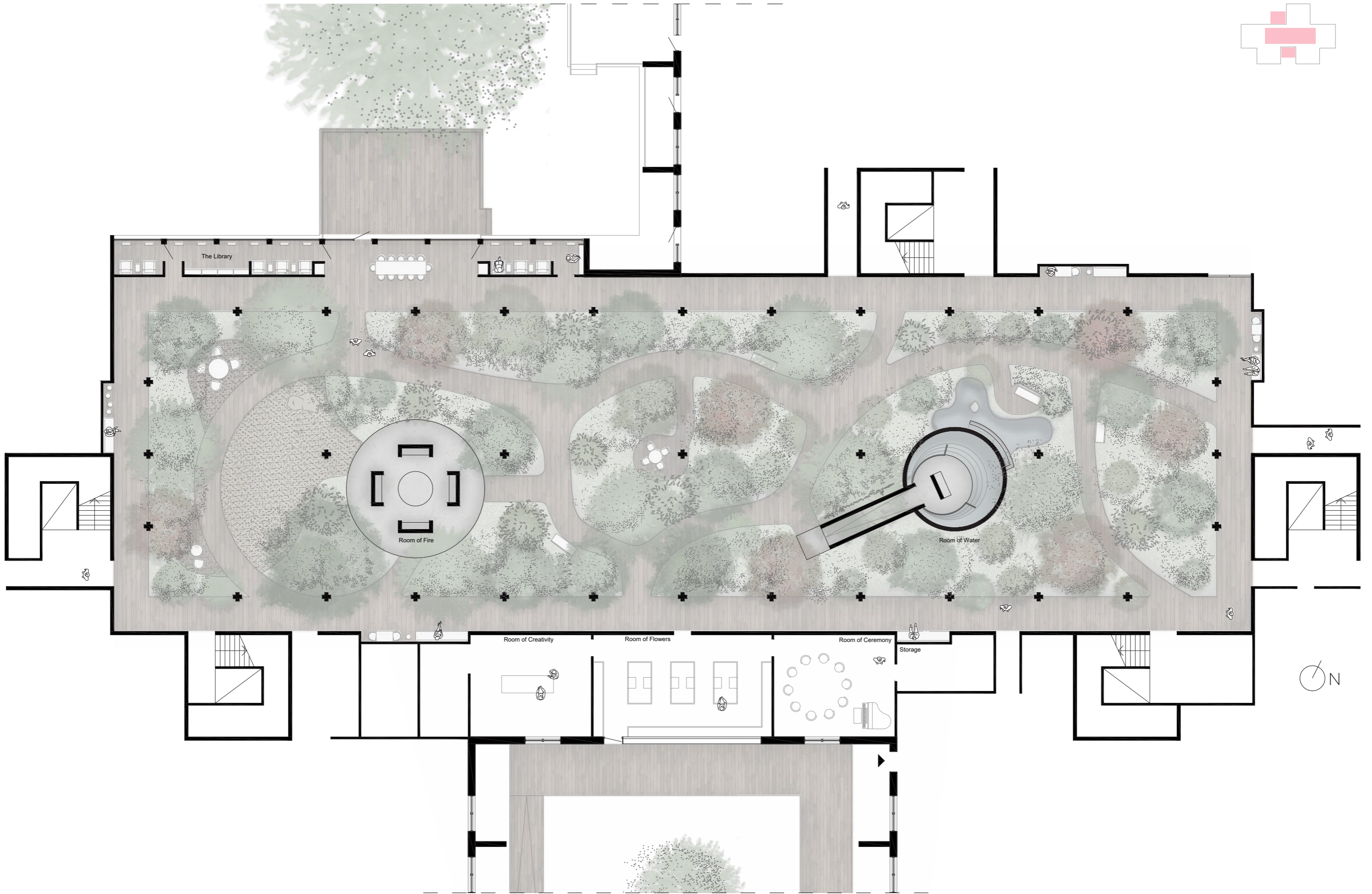
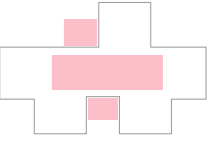


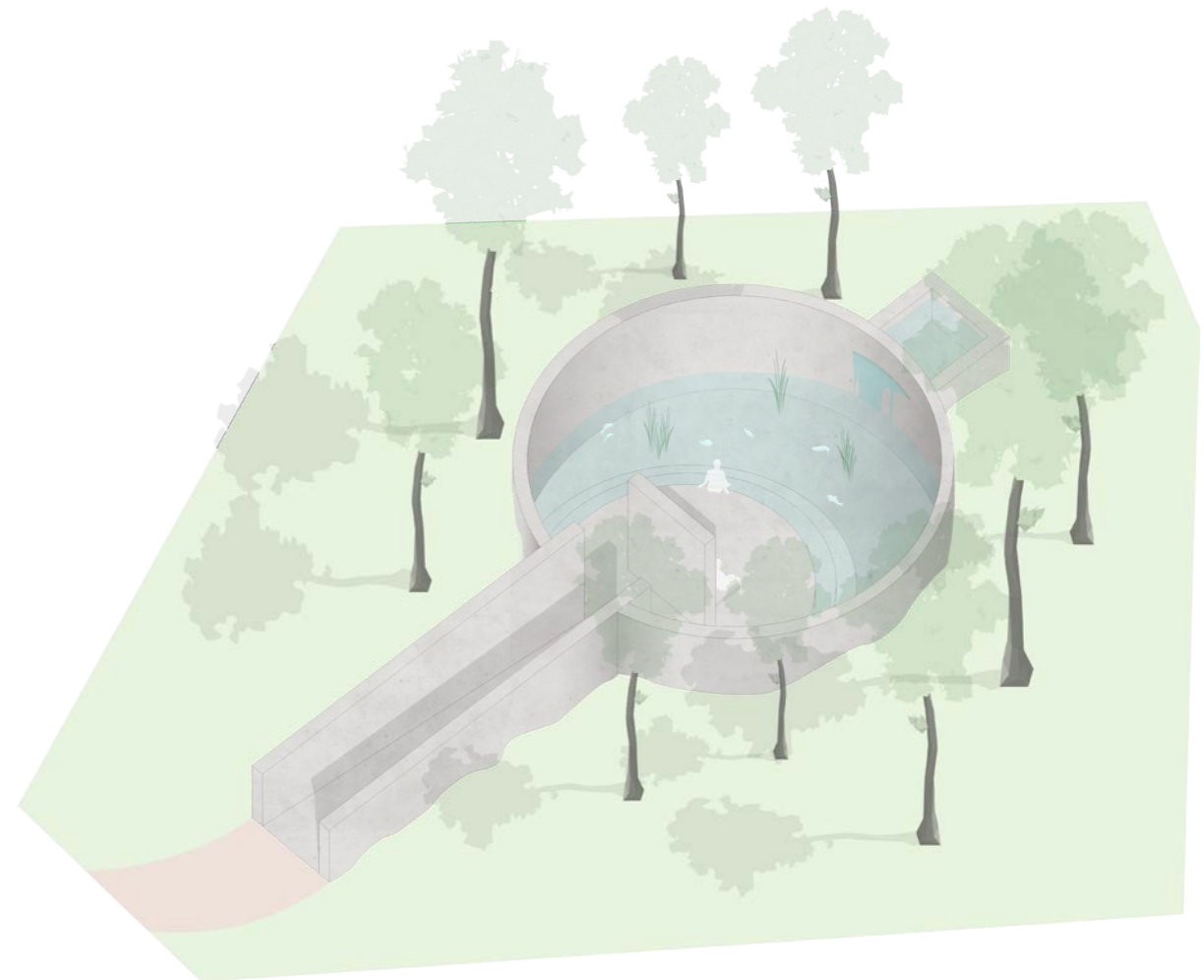
The public entrance faces the central light shaft as part of our pervading concept. From here, access to the public functions is available in every direction.



In the western wing of the temple lies the spring. This is a place where visitors can exercise therapy for body and mind or just find a moment to rejuvenate.

The carers' domain is entered by a narrow path through a lavish birch garden in the south. Spaces for work and gatherings are assembled along the facade of the wing and along the light shaft.

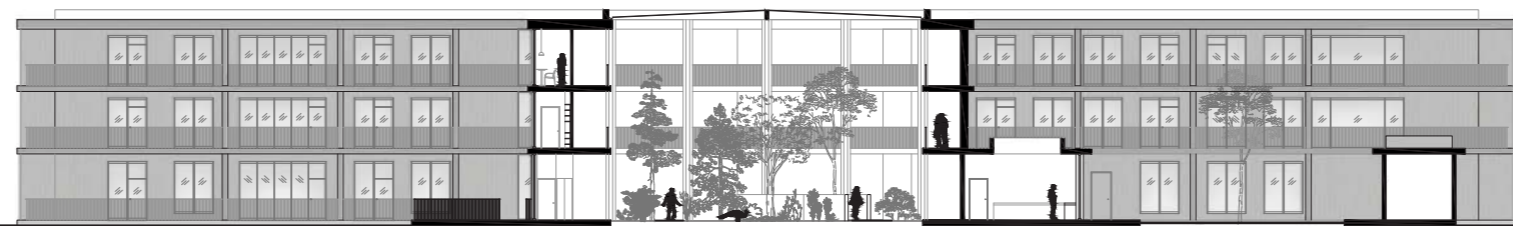
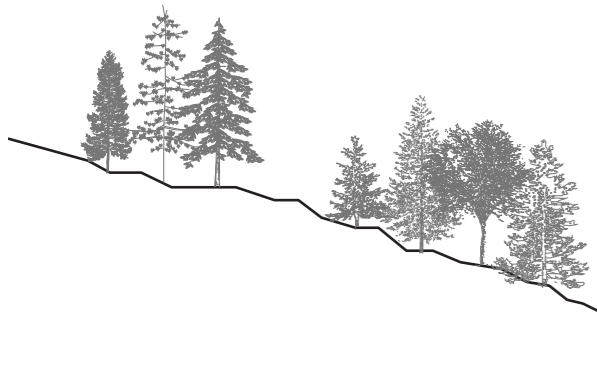
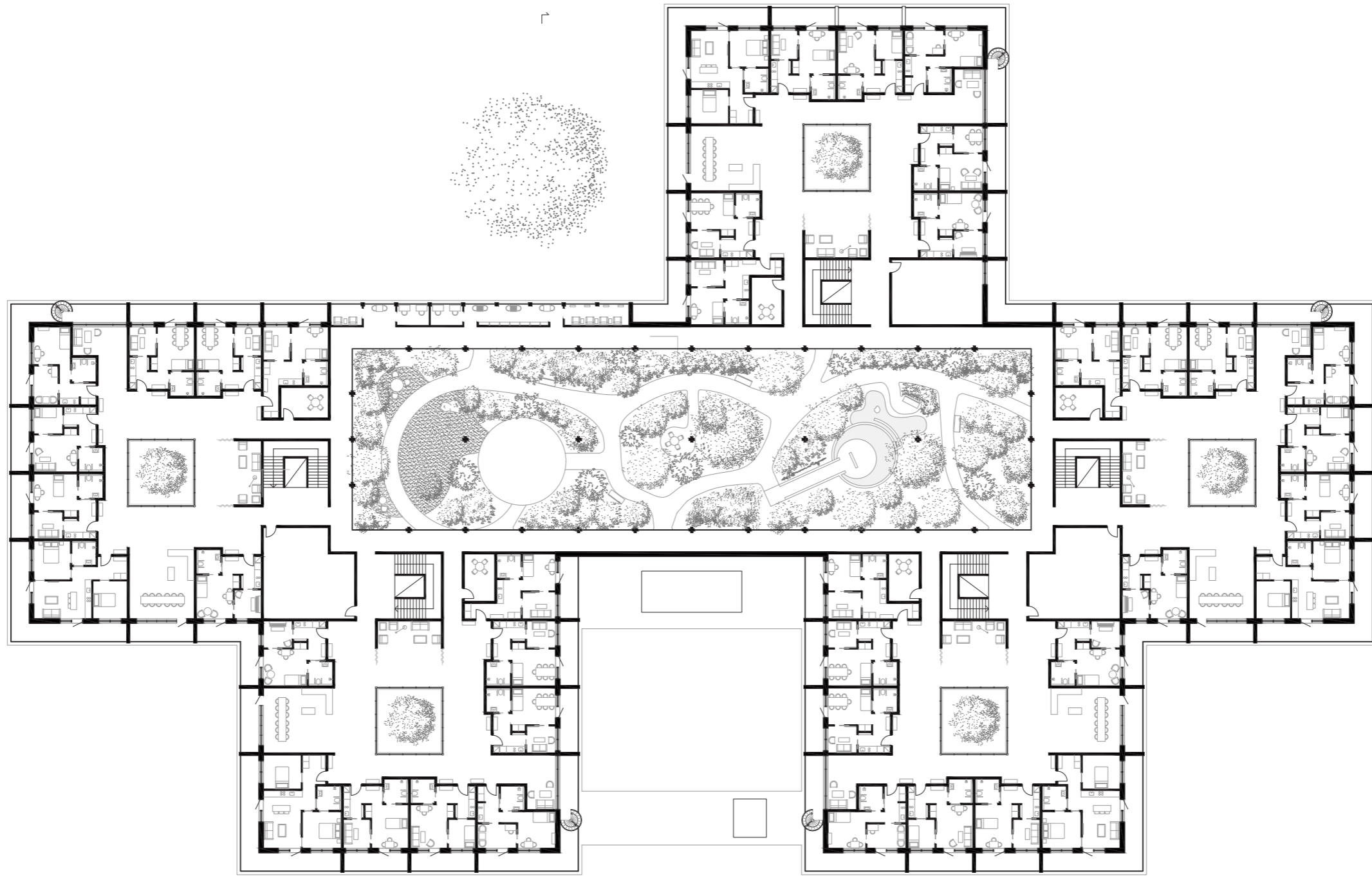


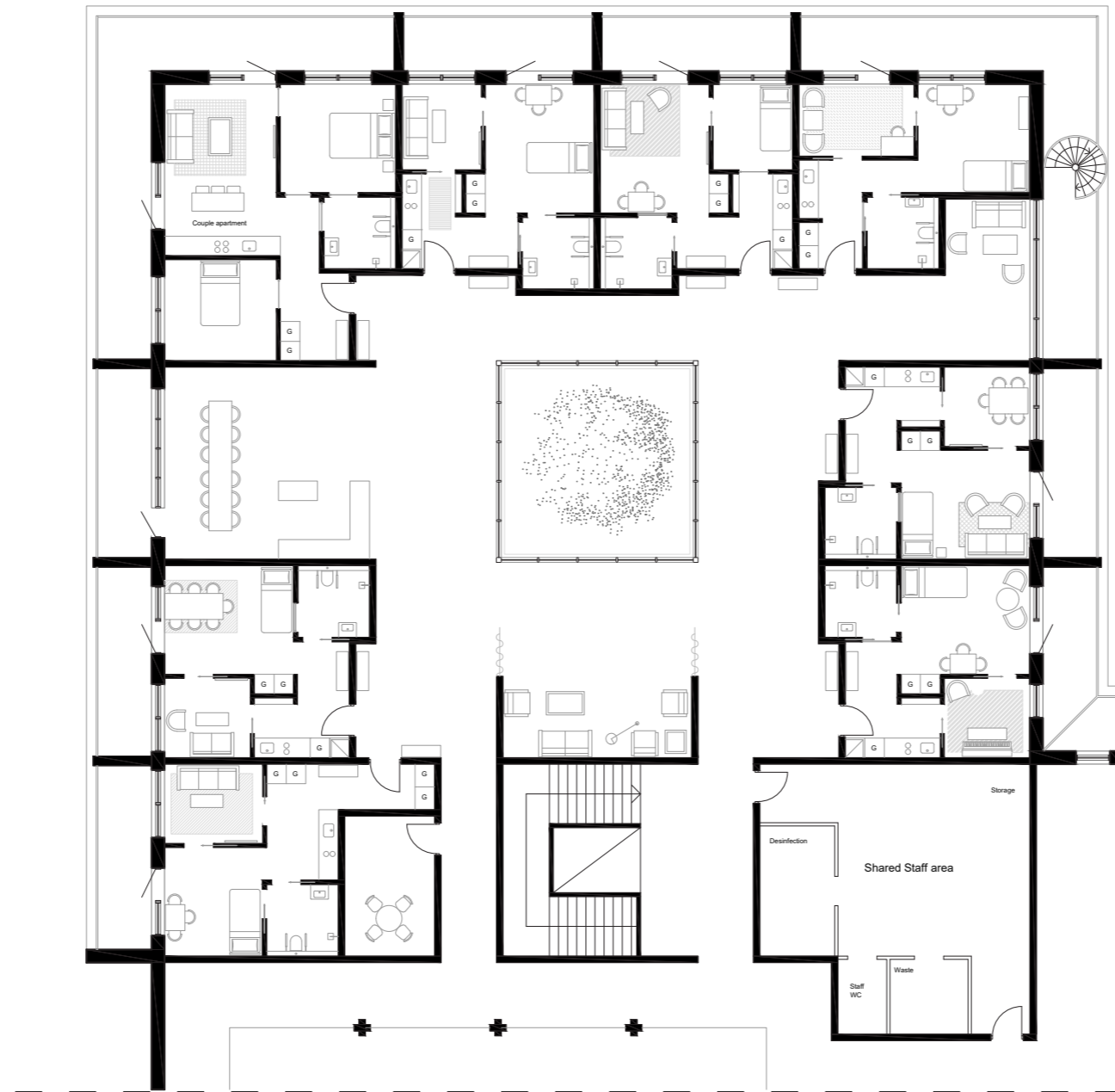
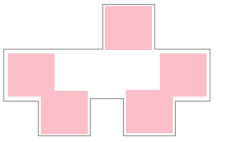


In the center of the temple, surrounded by residential sanctums and shielded from the outside climate, flourishes The Garden. This overgrown bed of life acts as a wandering platform where dwellers can strengthen their bond with nature and reconnect with raw emotions. Sharing this serene space are two rooms of elements: one of fire and one of water.



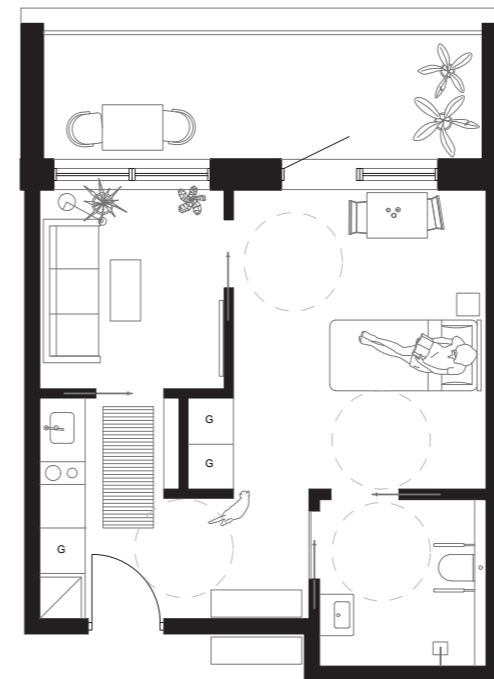
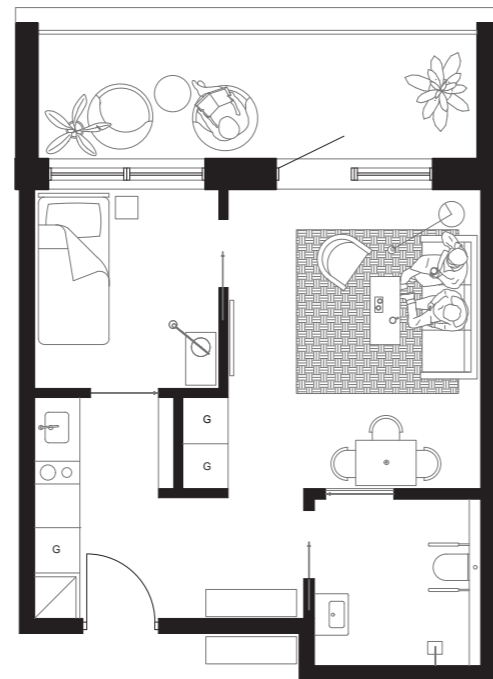
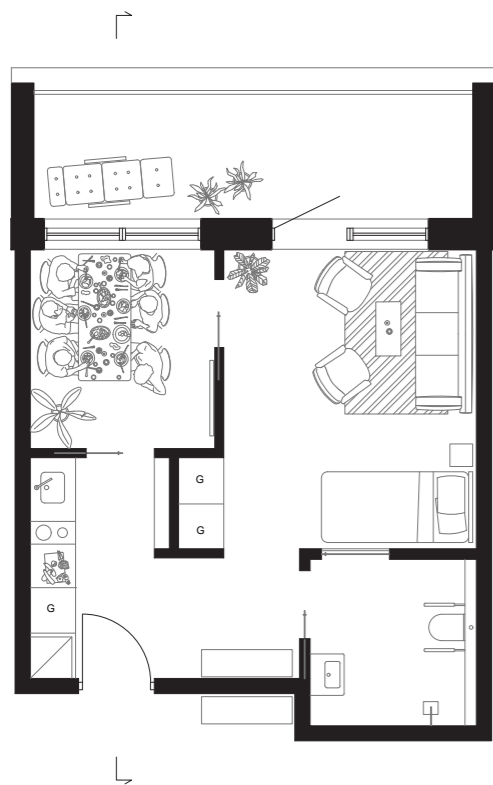
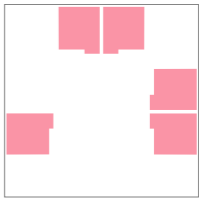
Wander along the winding paths within The Garden or walk sheltered under the arcade and explore some of the Temple's hidden gems.



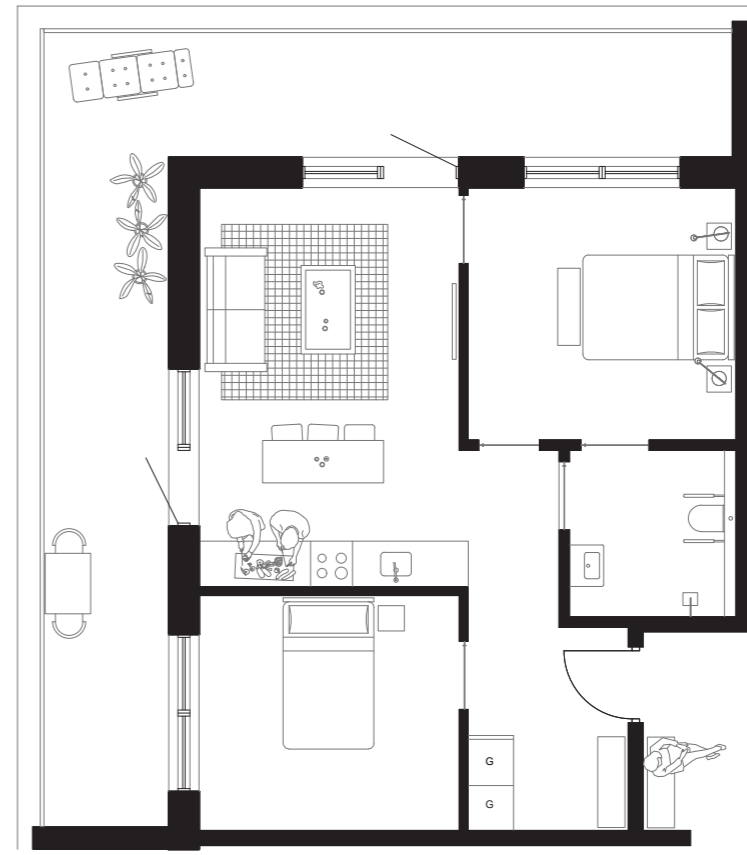
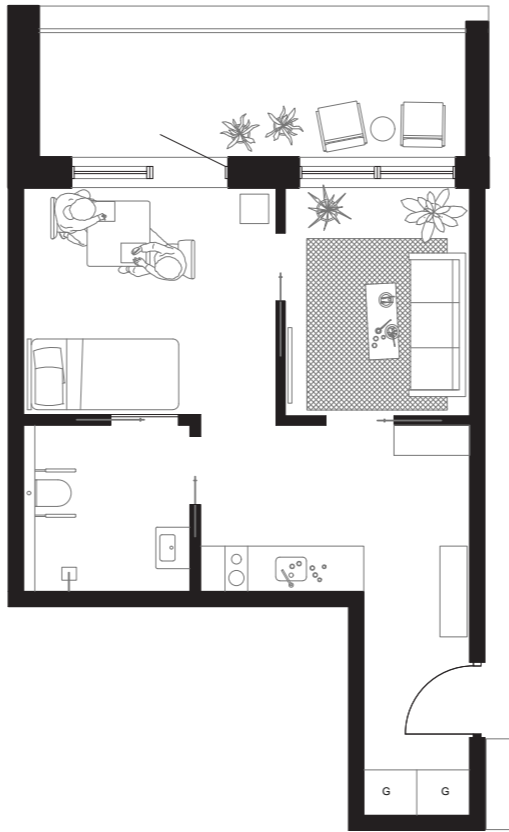
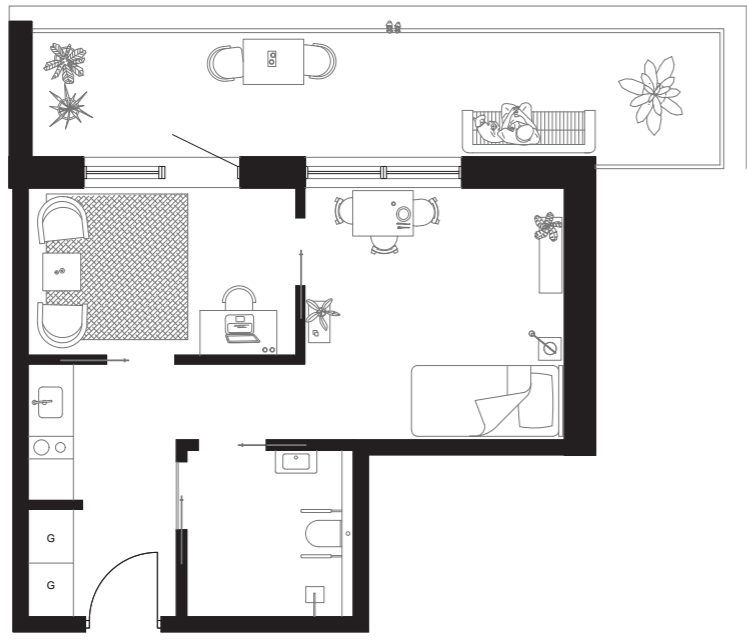
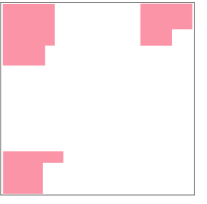


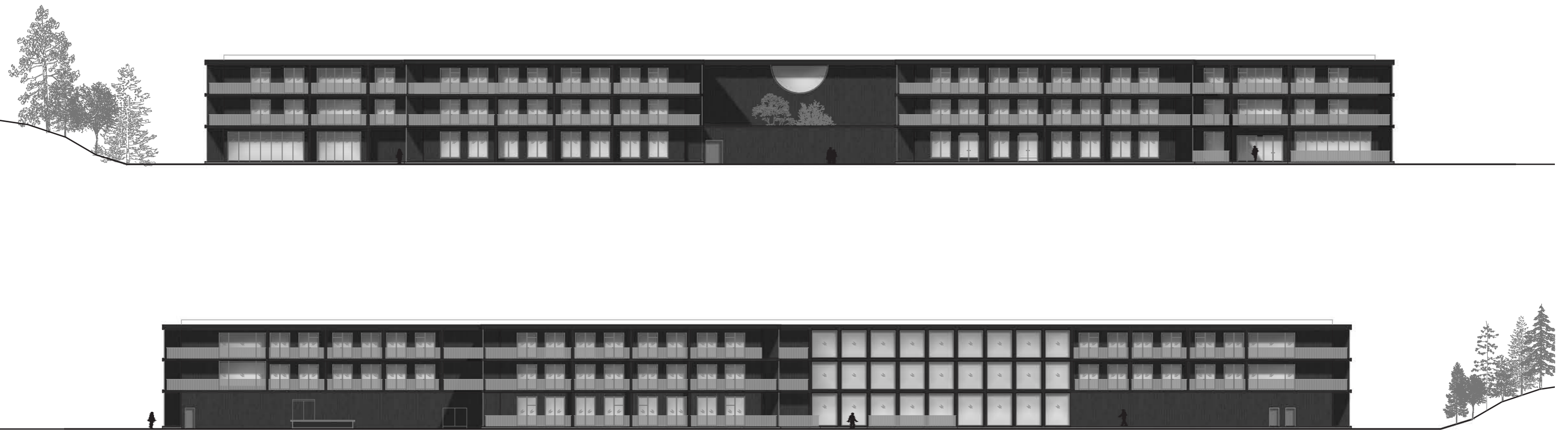


The light wells materialize the wandering loop, providing light, access to natural elements and transparency in every sanctum. Private dwellings enclose the space with panoramic balconies on the exterior and nooks with seating on the interior.



The apartments have a clear division with three spaces: one entrance space with a lower ceiling and two separate higher living spaces in order to better adapt to individual lifestyles. The room compositions can then be changed by adding wooden screens to door openings.





The building is constructed in cross laminated timber and stands on a concrete foundation. The structure of the facade is broken by a semi-circular opening, giving a glimpse of the inside experience in the otherwise rational composition. The dark color of the building amplifies the contrast between inside and outside.





Thank you