

INTO THE REEDS

KARIN AXELSSON JOHANRANCH PETTER SOLBRECK

INTO THE REEDS

BACKGROUND

The project is located in Önnared, a suburb 30 minutes from the central core. From the site you are 1 kilometer from the ocean and just some minutes from beautiful forests. The site contains beautiful natural elements, such as wild roses, reeds, birches and willows. From the beginning it was very important to keep that nature in the design process. The influences were from the etchings of the ruin city Tivoli by Giovanni Battista Piranesi and the sculptures by the Danish artist Per Kirkeby. We wanted the feeling that the building would rise up into the reeds, like a heavy monolith, just being there as a natural element. The façade has a bright beige brick cladding (Petersen D71) that resembles the reeds that are on the site. Windows (Hajom) are in birch and melts in with the brick. The building has sun screening, so that the residents can choose how much light they want in their building. The sun screens is in a natural beige color, to relate to the brick and the reeds. The building is divided in a social part (the entrance area of the building) and a more private part (the residential area). A lot of effort has been made to make the building dignified for the residents.

THE ENTRANCE BUILDING

The entrance building contains the public and private activities for the residents. Here you find the restaurant and other activity spaces. There are several rooms that are designed as general activity rooms. Here you can have for example yoga, hair-dresser, a small shop and other activities. In this part of the building you find a big terrace on the third floor. From the beginning we had the idea that the dementia building would focus on the relations between the residents and their relatives that would come to visit. Therefore there are for example a library and a spa that could be used together as a social activity.

GENERAL INTERIOR

Indoor you have both white walls, birch veneer walls, and brick walls that gives a delicate touch to the space. The floor is a classical and rough wooden floor, in Swedish called "skurgolv". Together it gives the space a calm and dignified feeling. The guidance through the building are designed from the sightlines from surrounding nature. The building uses the nature as sight guidance ("I live near the wild roses etcetera").

APARTMENT

The apartment is designed as a general room, so you can easily redesign the space so it fits the residents that lives there (for example move the kitchenette, see drawings). The material is the same as the other in the public part of the building. The build in light in the ceiling is made so that you can take away the lamp and instead insert a lift. The apartment has a bench in front of the windows, both so that you can have it as a bench or a window sill. The bench is also there to minimize the feeling that you can fall out of the windows.

GROUP ROOM

The group rooms are located in the corners of the building, to get good light conditions and proportions. The room has the same material as the other rooms in the building. They are designed as general rooms so you can easily redesign or refurnish the space as you like.

THE INNER COURTYARDS

The courtyards is wild and authentic as the site was before. You go into the reeds on low footbridges in wood. Out in the courtyards you have brick arches that defines the area as outer recreation spaces. The trees and the nature on the site are preserved.

INTERIOR DETAILS

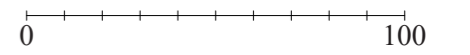
- Lounge chair Neptunes (Åke Axelsson, Gärsnäs)
- Chair MO 8002 (Thygesen/Sørensen, Magnus Olesen)
- Table 6286 (Børge Mogensen, Fredericia)
- Ceiling Lamp PH 4½ -5 (Poul Henningsen, Louis Poulsen)
- Floor lamp PH 4½ -3½ (Poul Henningsen, Louis Poulsen)
- Interior benches (designed for the project)

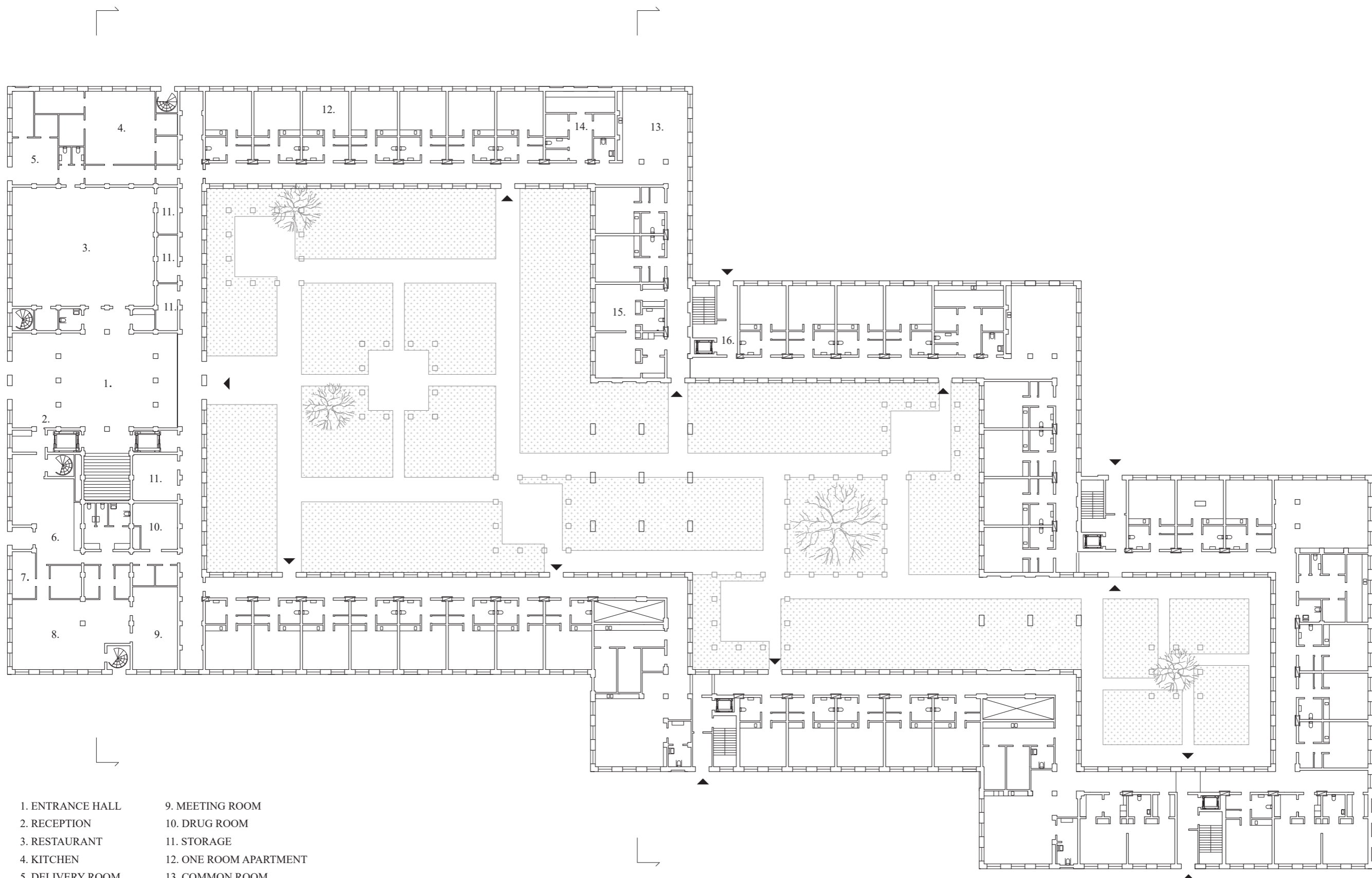
All drawing scales are adapted to paper size A3.





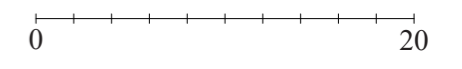
SITUATION 1:2000





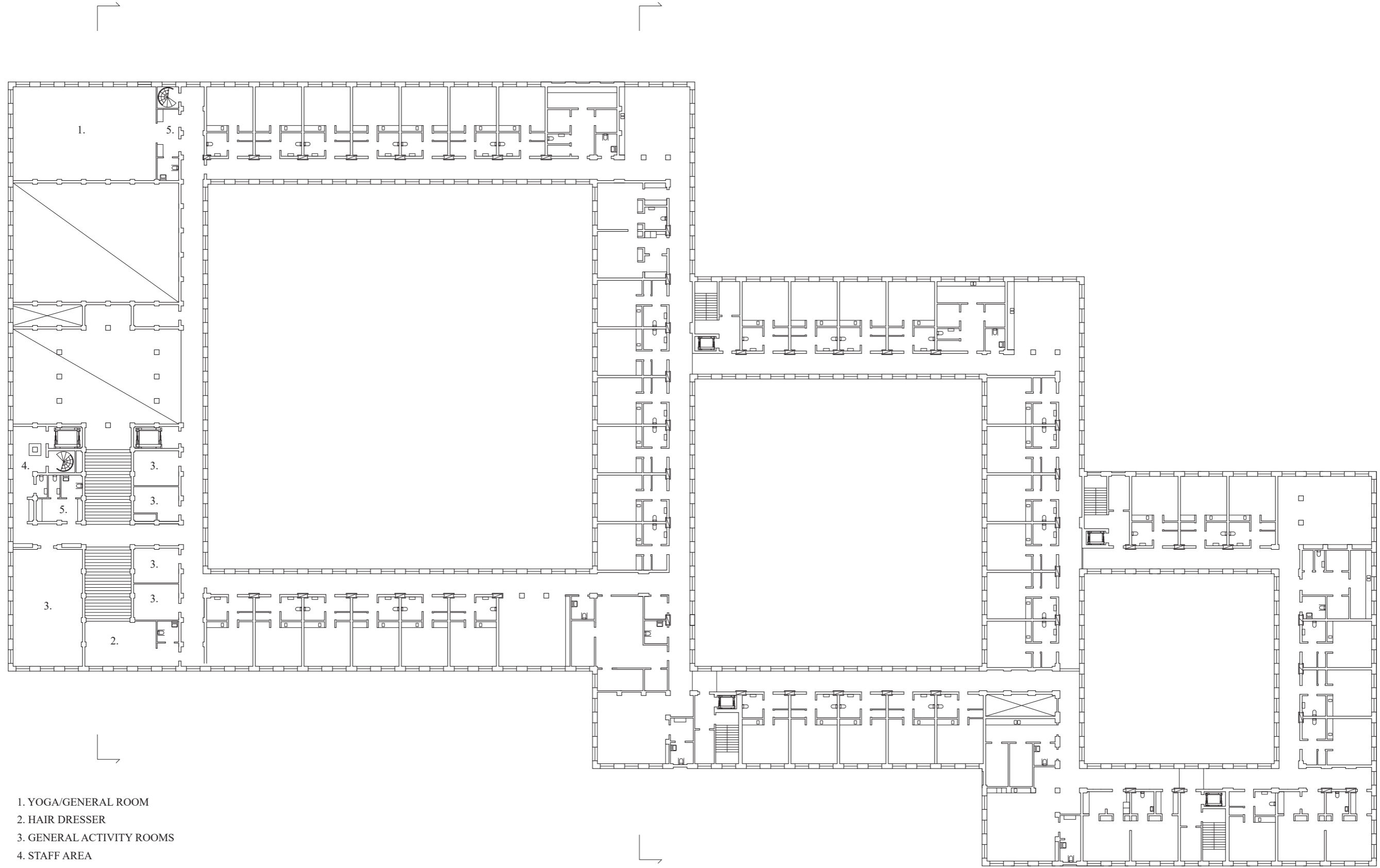
- 1. ENTRANCE HALL
- 2. RECEPTION
- 3. RESTAURANT
- 4. KITCHEN
- 5. DELIVERY ROOM
- 6. STAFF AREA
- 7. MANAGERS AREA
- 8. OFFICE AREA
- 9. MEETING ROOM
- 10. DRUG ROOM
- 11. STORAGE
- 12. ONE ROOM APARTMENT
- 13. COMMON ROOM
- 14. LAUNDRY/DESINFECTION/STORAGE
- 15. TWO ROOM APARTMENT
- 16. COMMUNICATION/ENTRANCE

ENTRANCE FLOOR 1:400



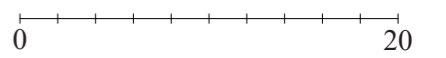


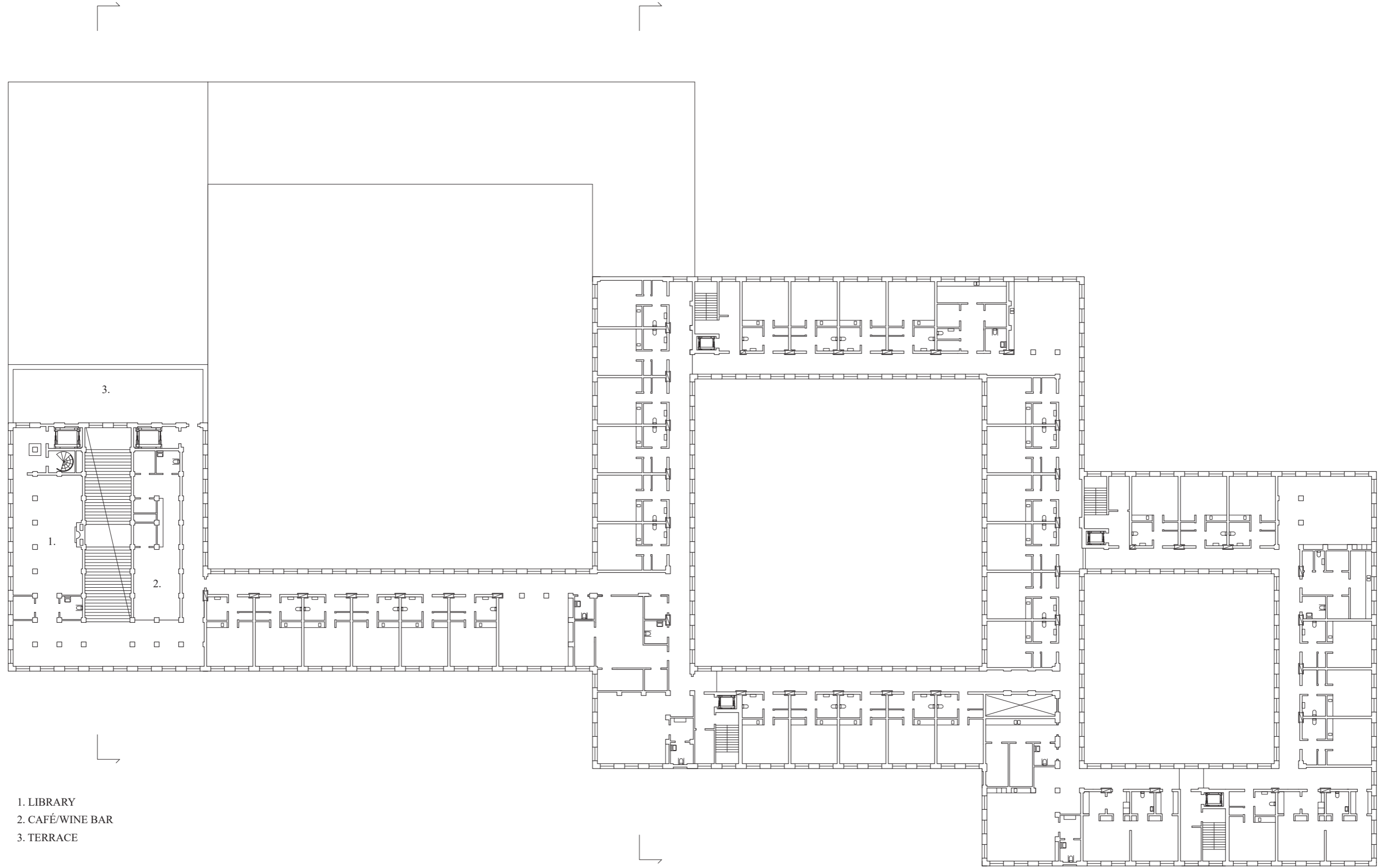
ENTRANCE HALL



- 1. YOGA/GENERAL ROOM
- 2. HAIR DRESSER
- 3. GENERAL ACTIVITY ROOMS
- 4. STAFF AREA
- 5. WARDROBE

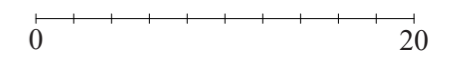
SECOND FLOOR 1:400





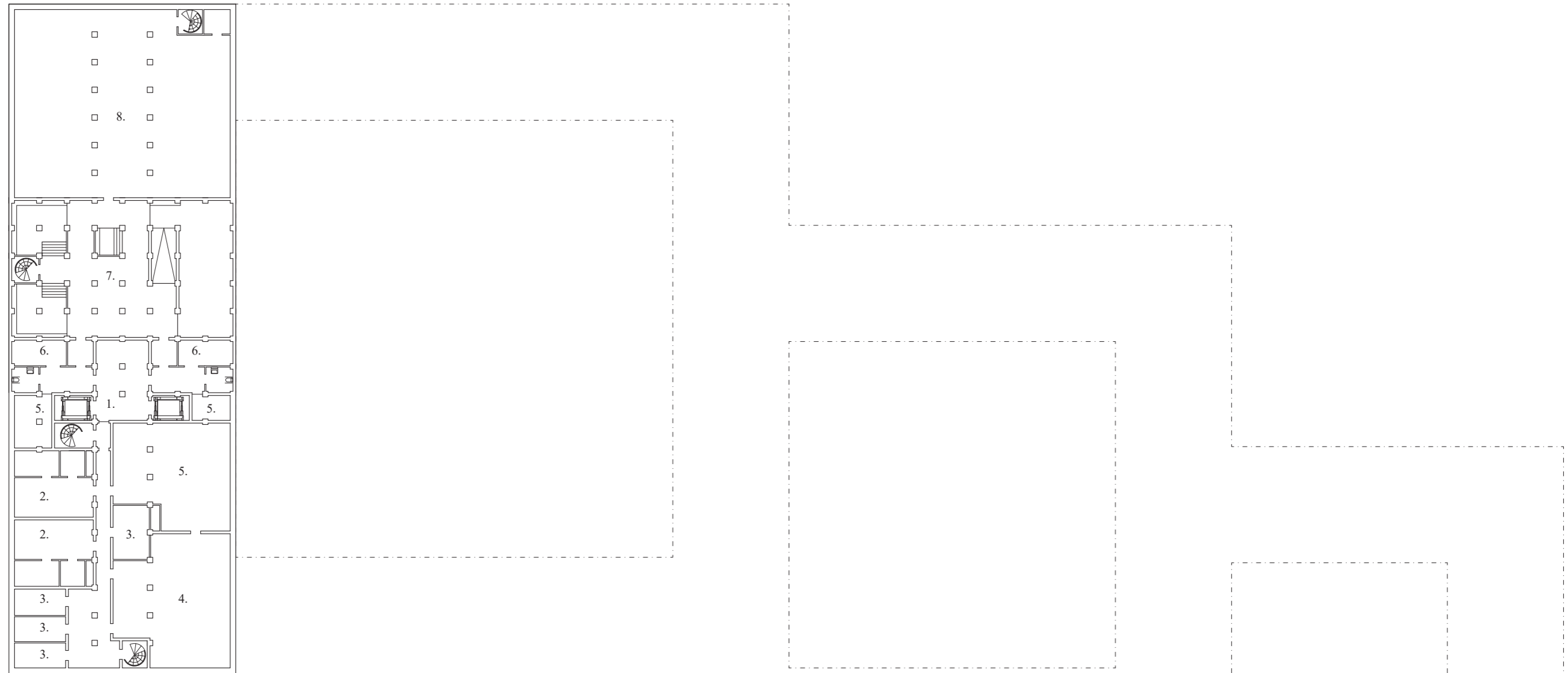
- 1. LIBRARY
- 2. CAFÉ/WINE BAR
- 3. TERRACE

THIRD FLOOR 1:400



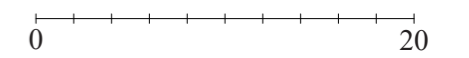


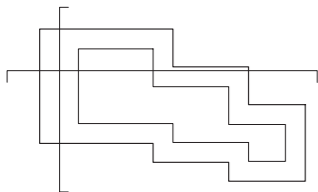
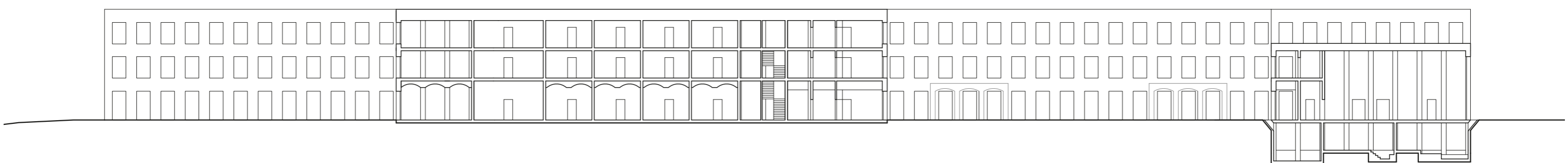
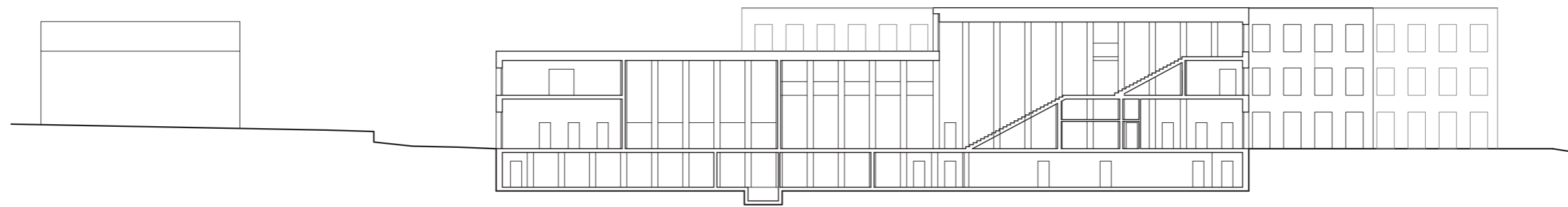
LIBRARY



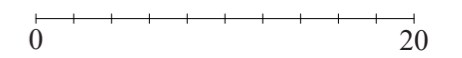
- 1. BASEMENT HALL
- 2. STAFF DRESSING ROOM
- 3. STORAGE
- 4. TECHNIQUE ROOM
- 5. RESIDENTS STORAGE
- 6. SPA DRESSING ROOM
- 7. SPA & POOL AREA
- 8. SPA TECHNIQUE

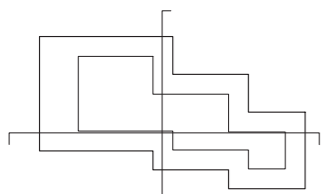
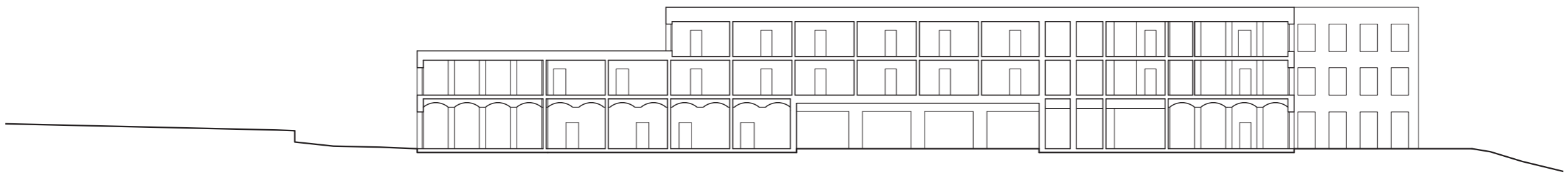
BASEMENT FLOOR 1:400





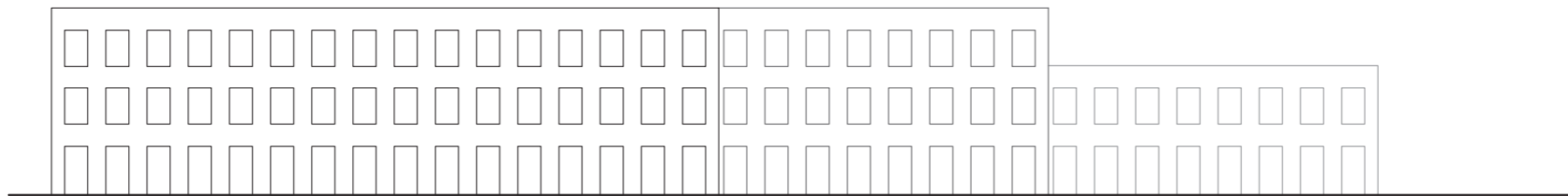
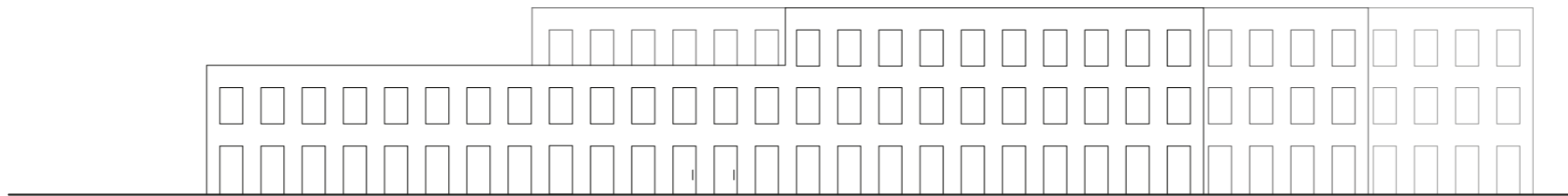
SECTIONS 1:400

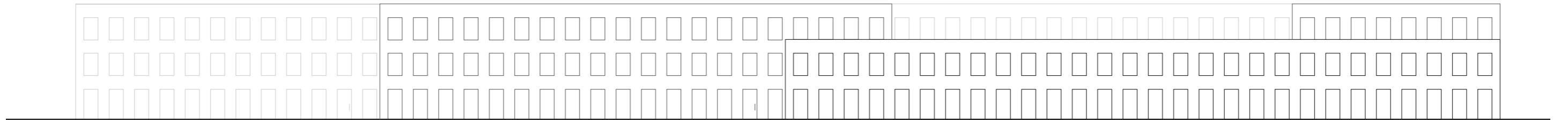
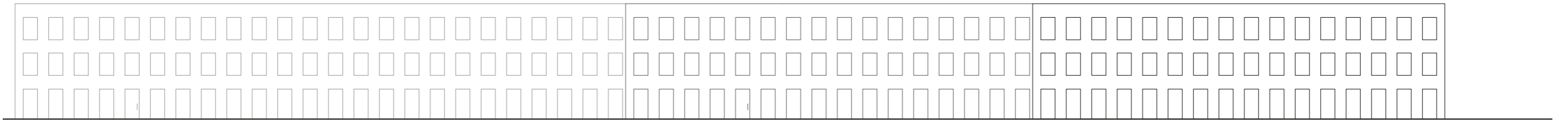


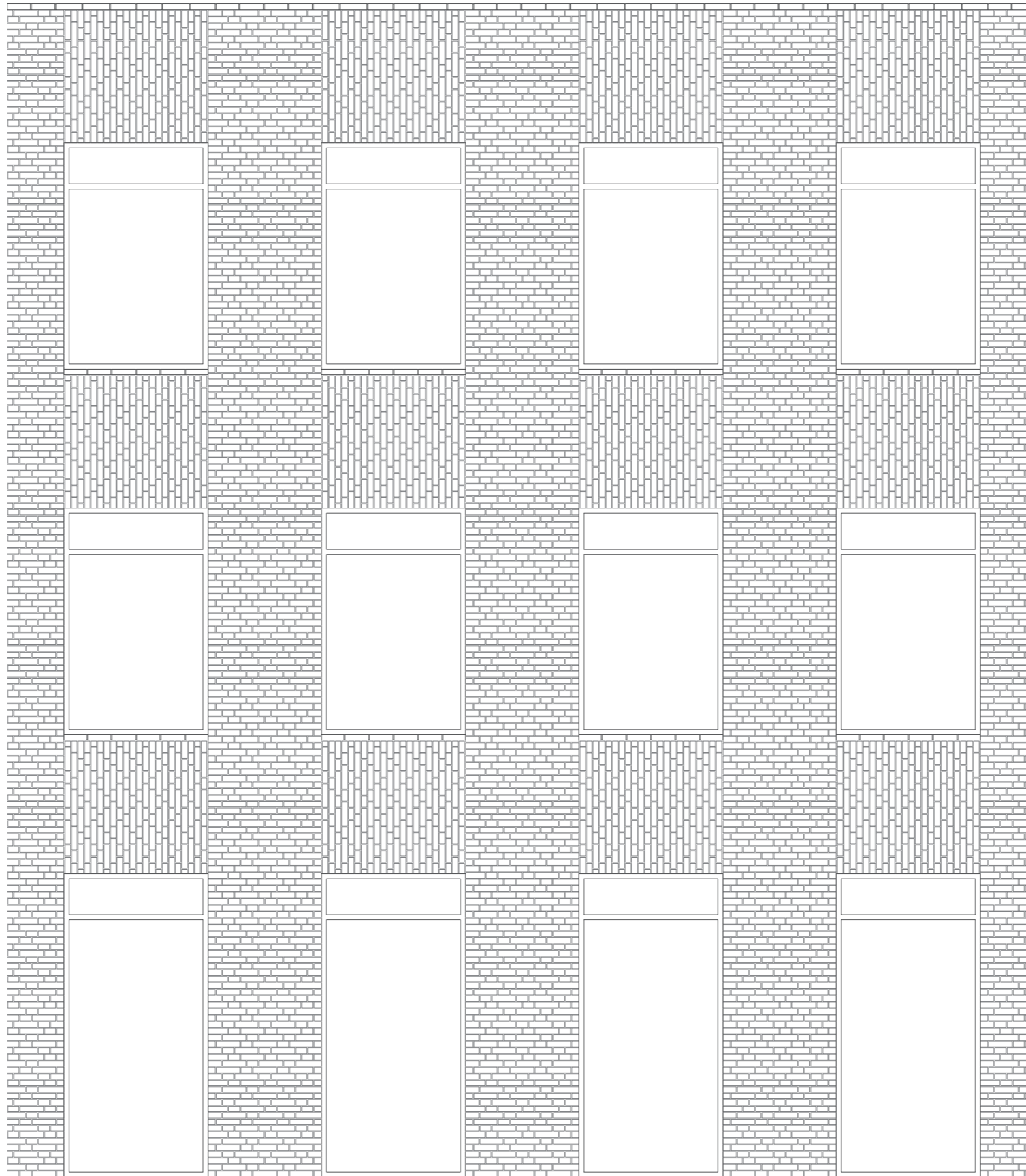


SECTIONS 1:400

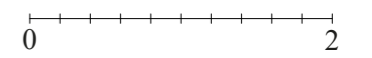
0 20





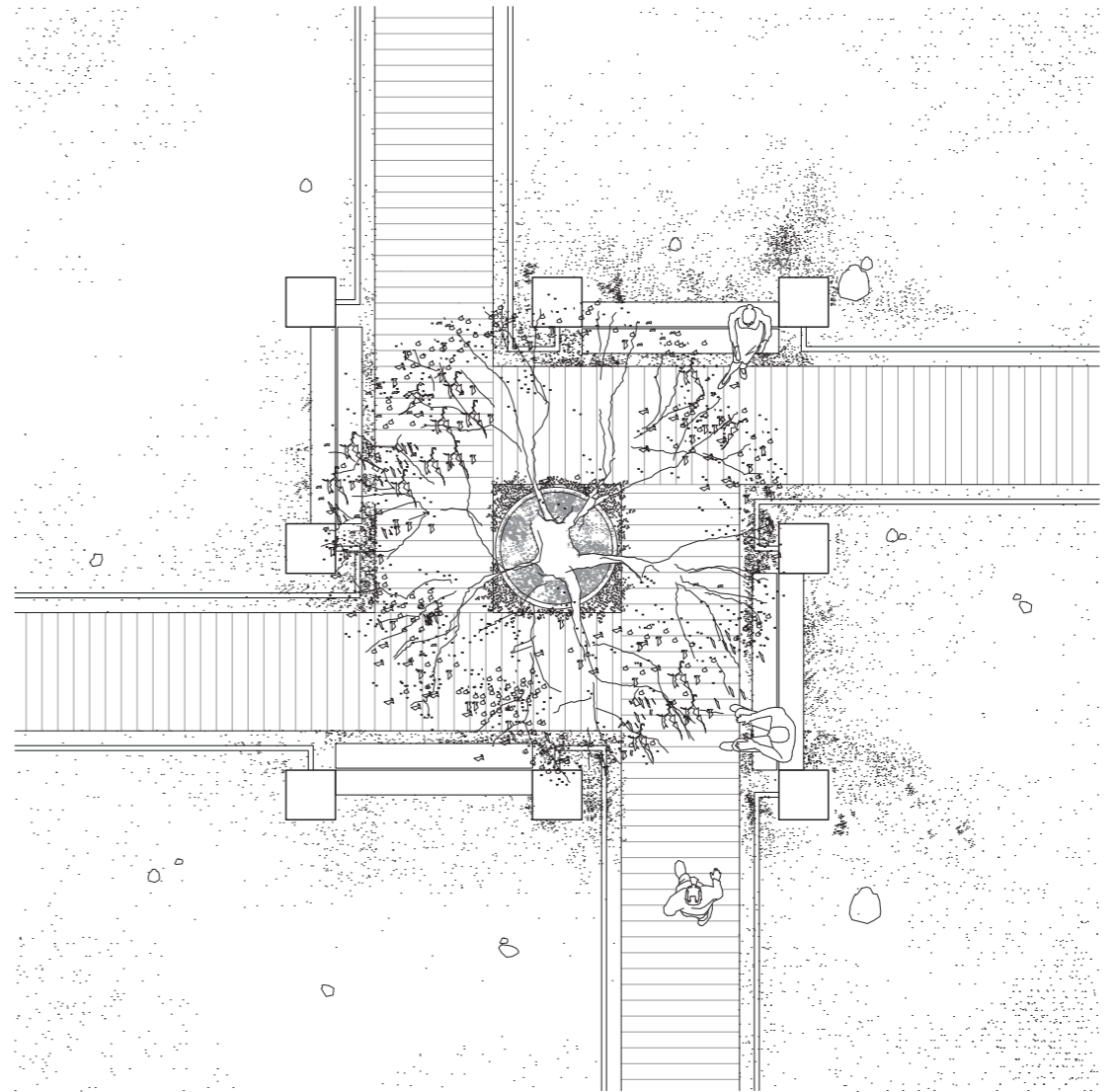
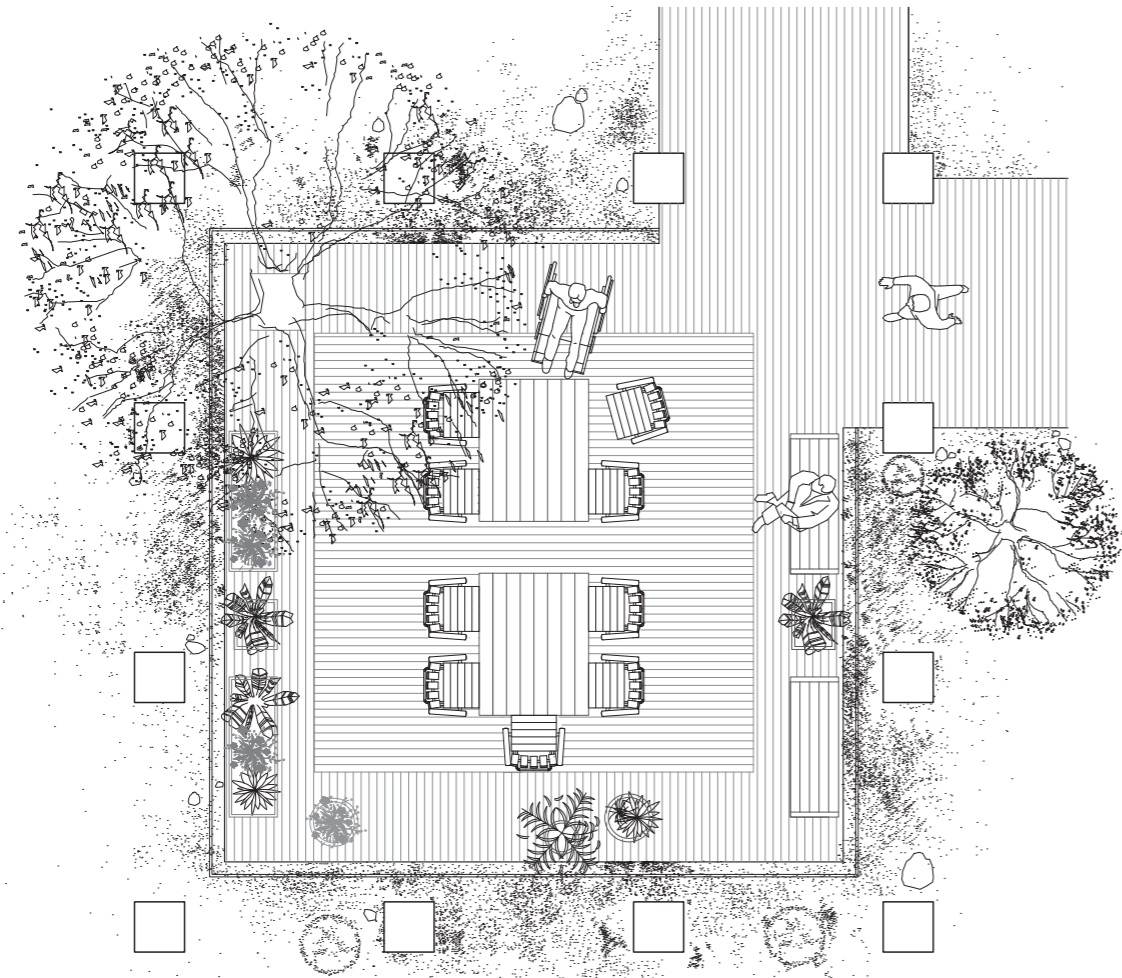


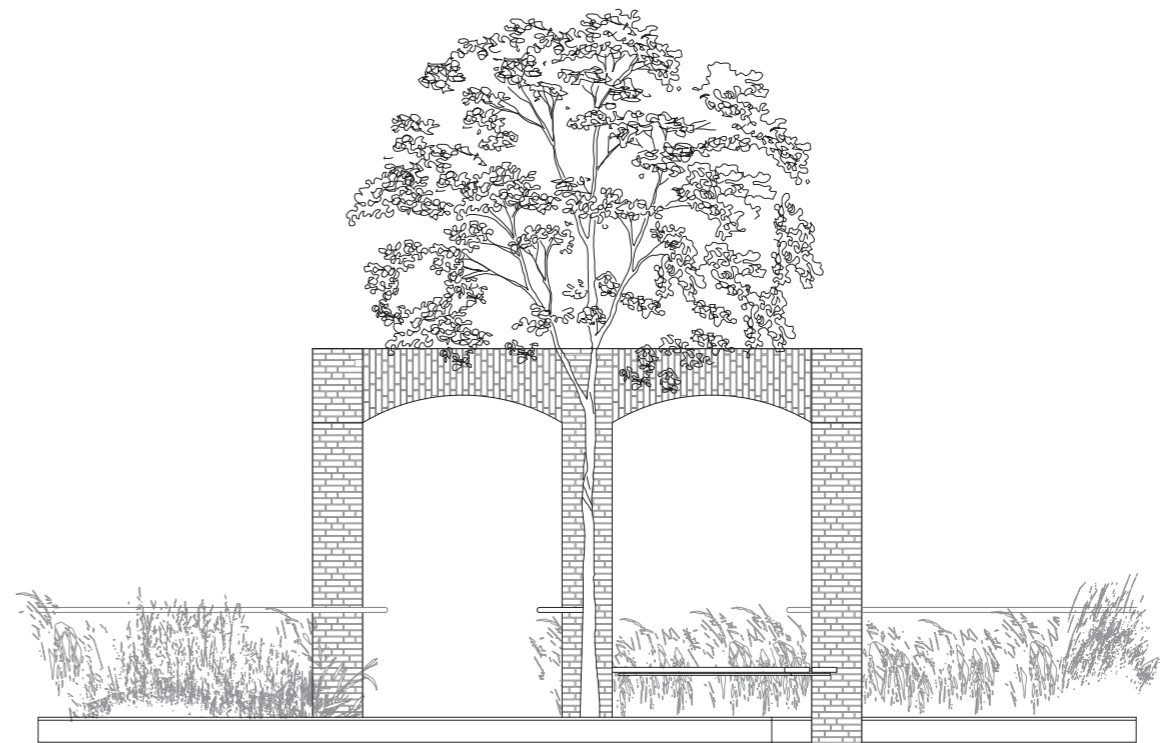
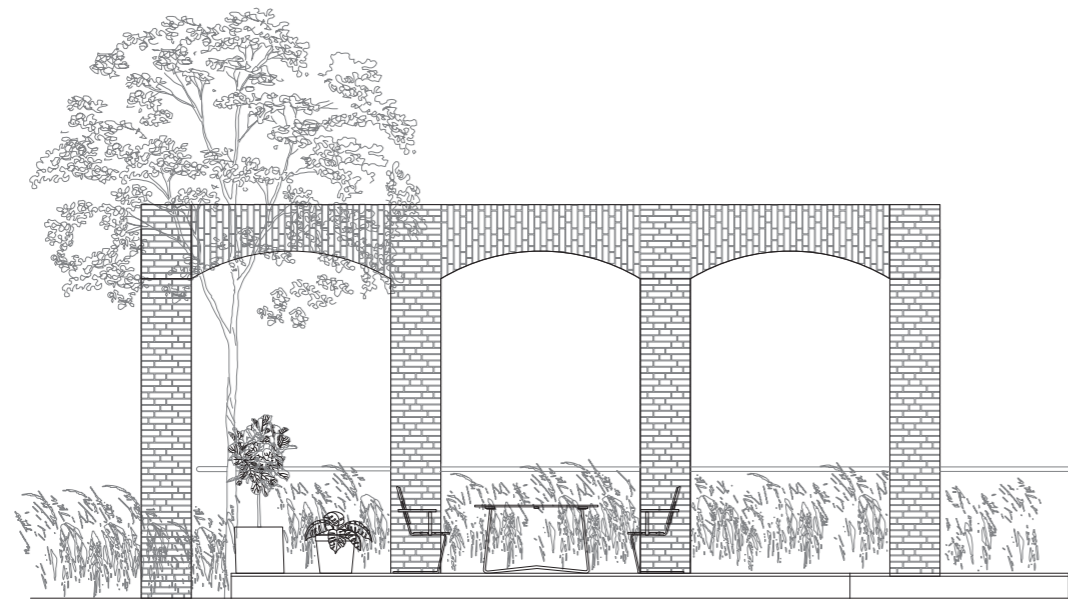
FACADE DETAIL 1:50





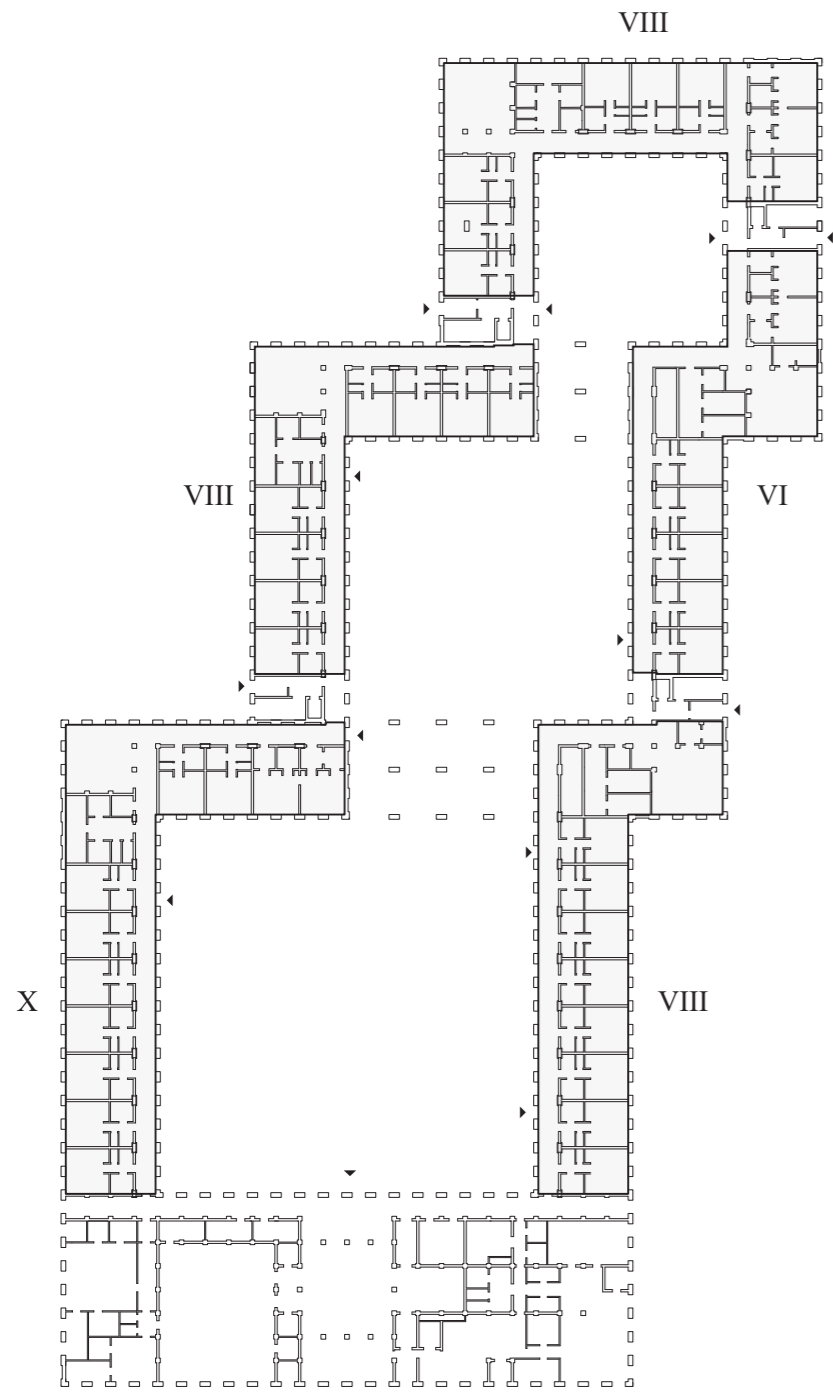
ENTRANCE FACADE



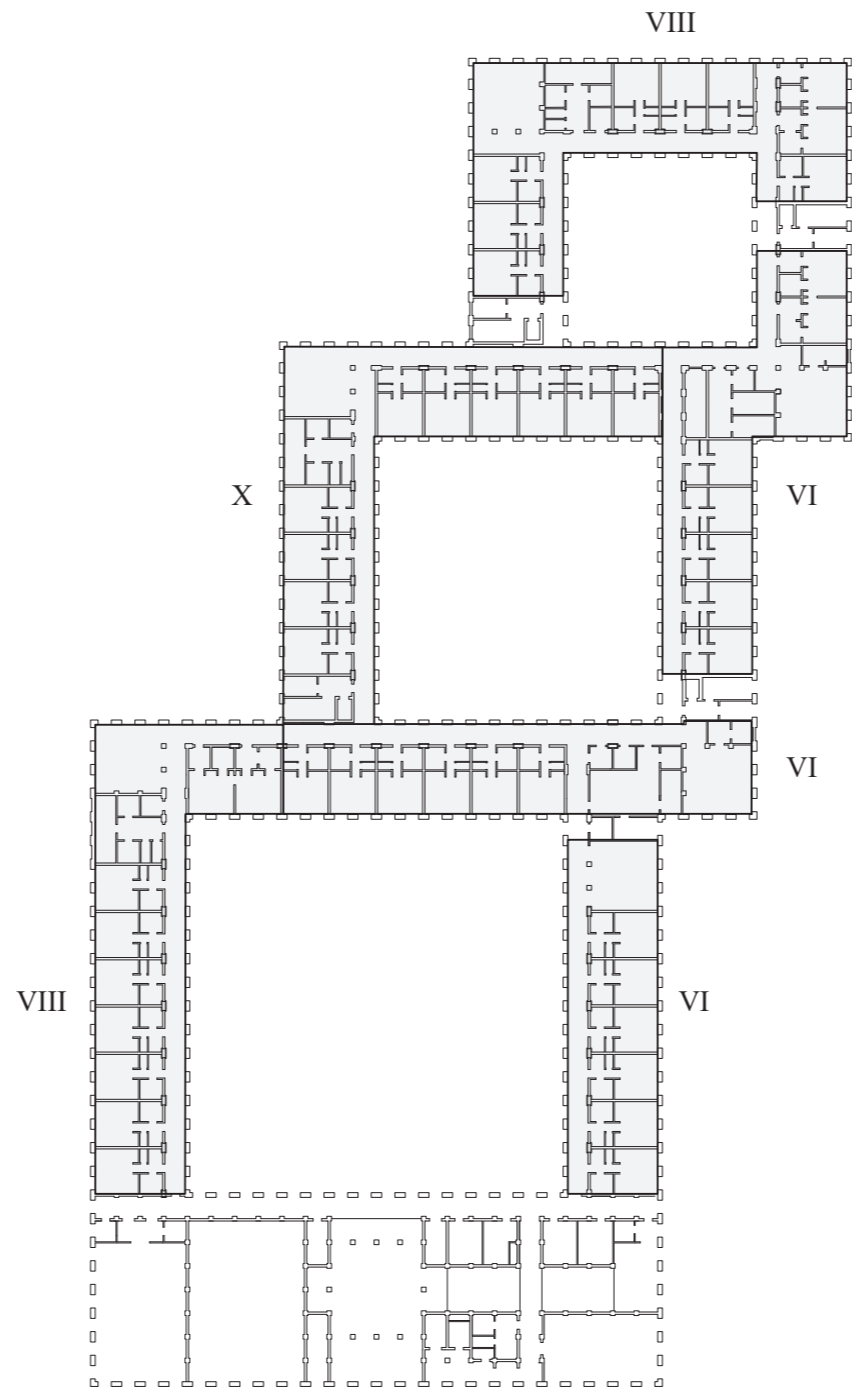




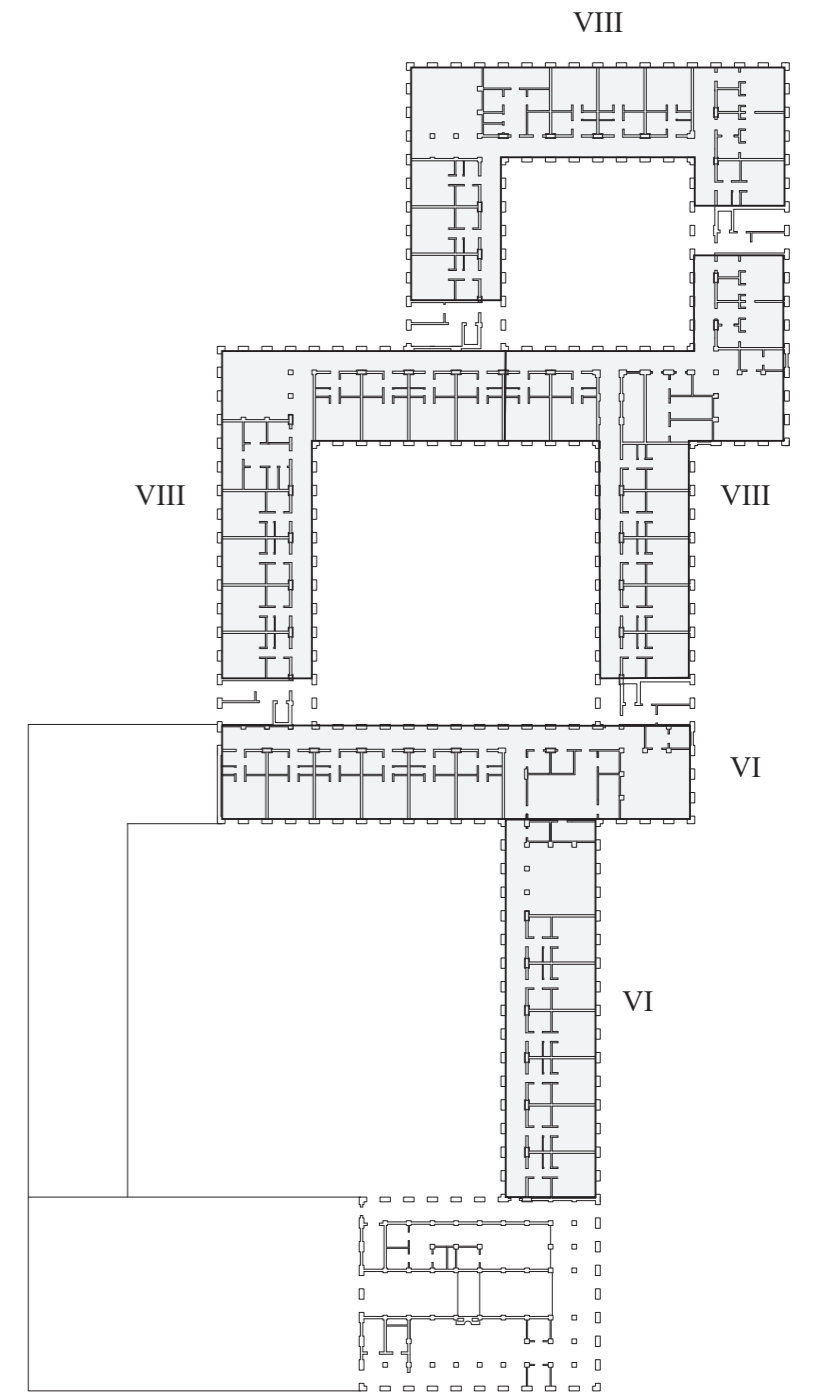
THE GARDEN & THE REEDS



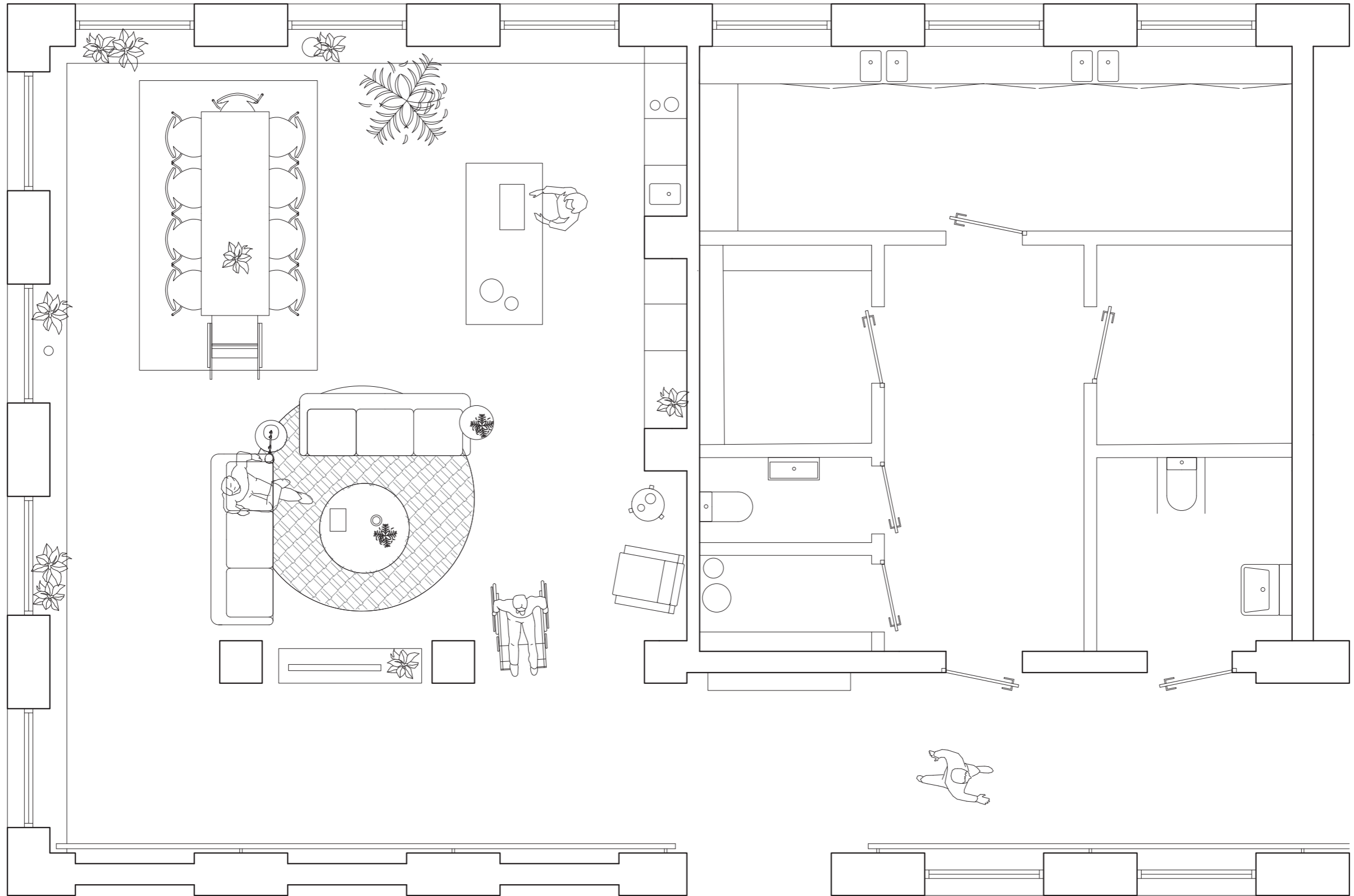
ENTRANCE FLOOR



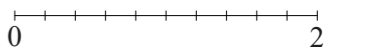
SECOND FLOOR



THIRD FLOOR

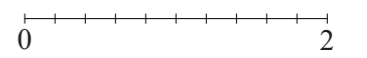


COMMON ROOM PLAN 1:50



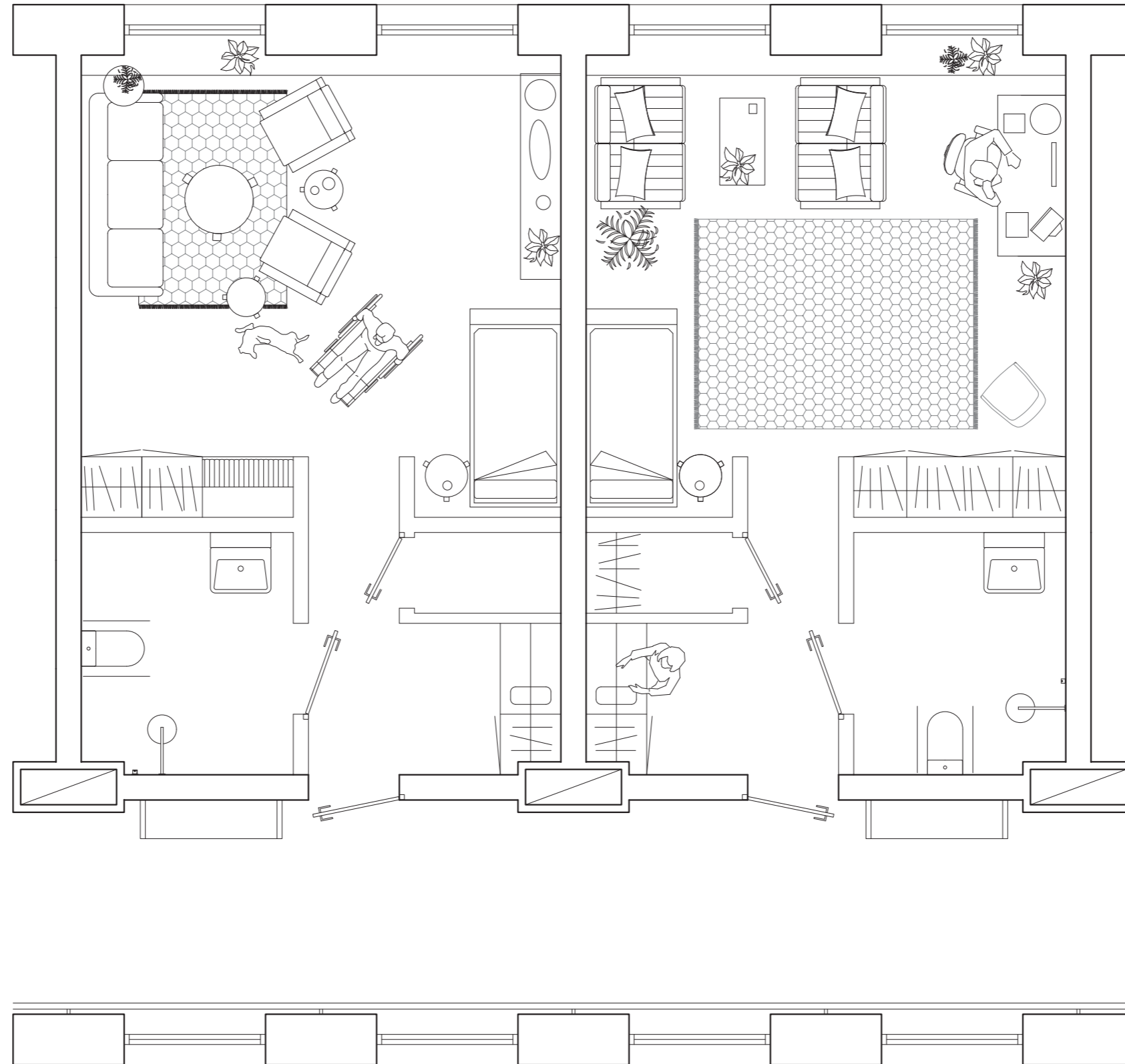


COMMON ROOM ELEVATION 1:50

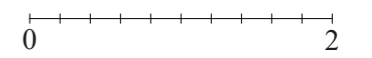


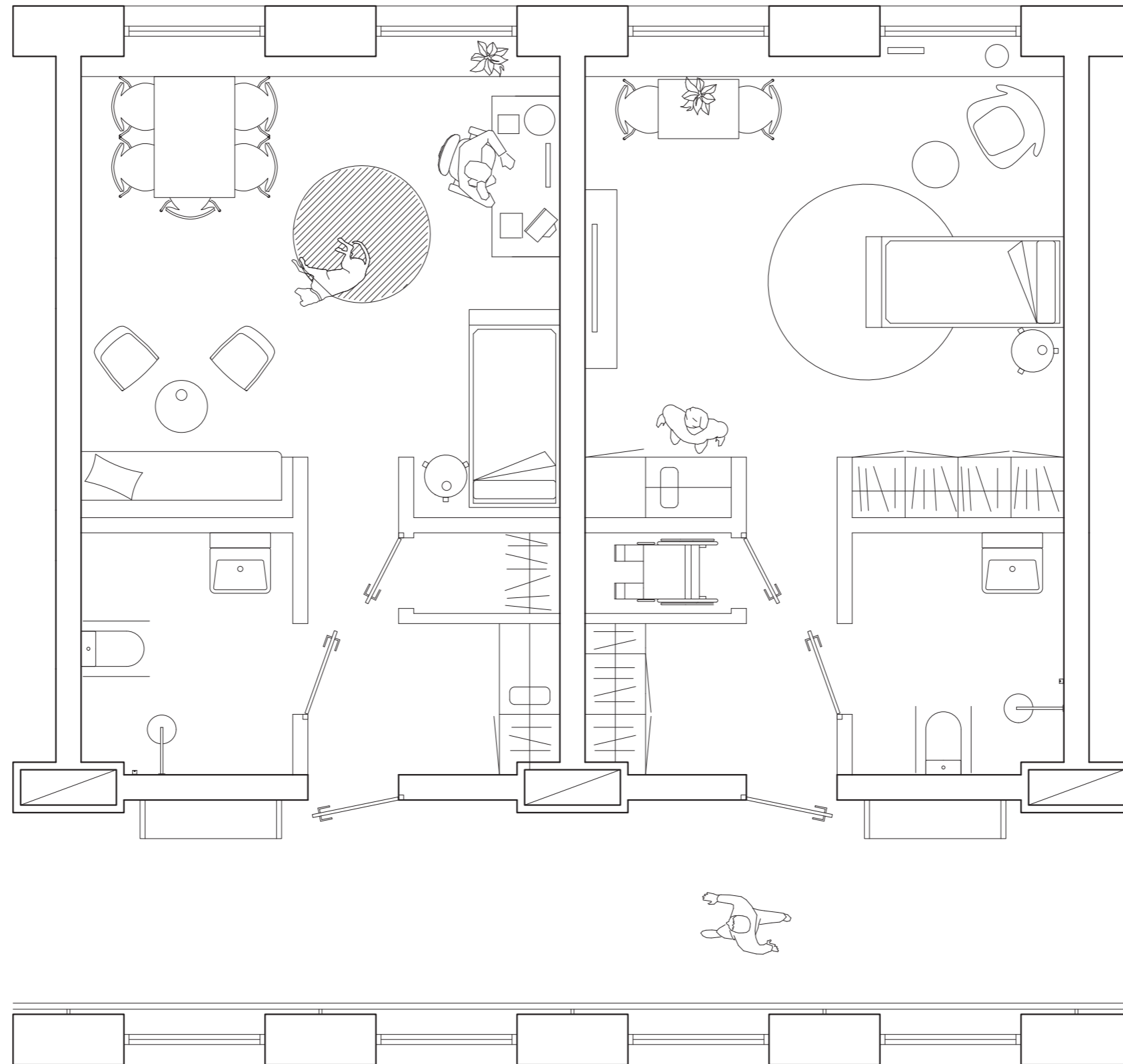


COMMON ROOM

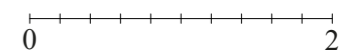


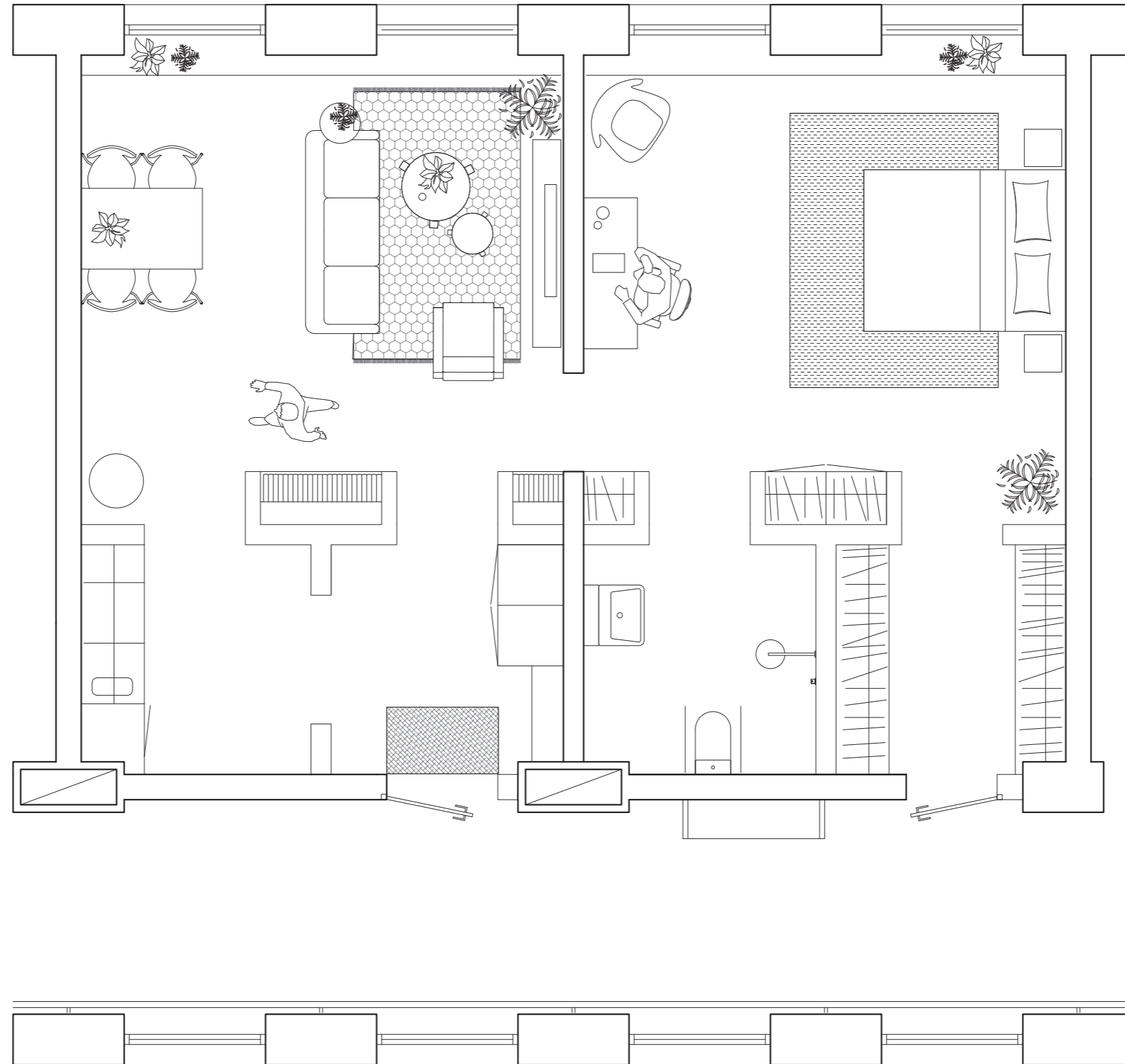
APARTMENTS & CORRIDOR PLAN 1:50



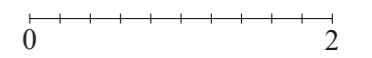


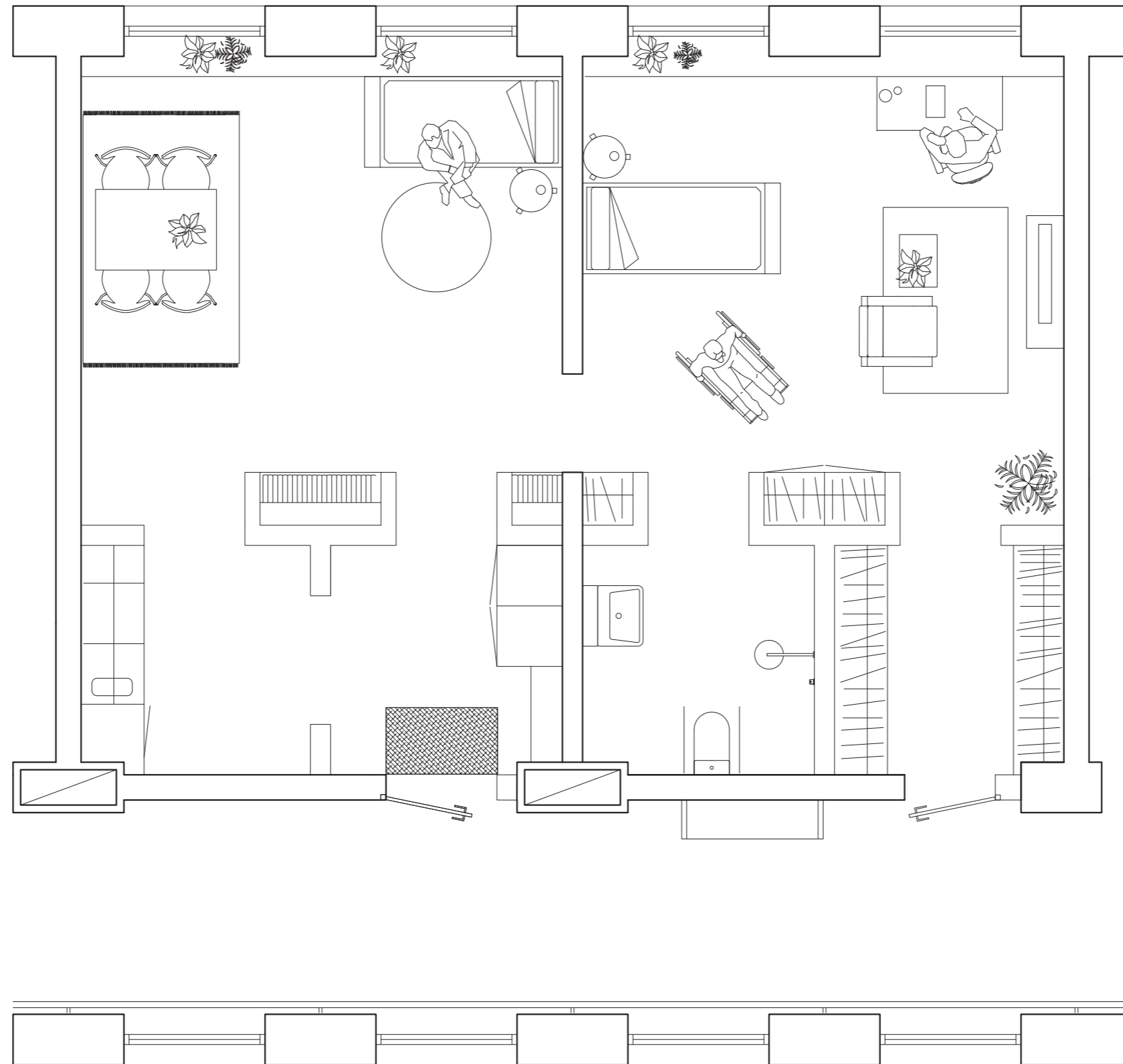
APARTMENTS & CORRIDOR PLAN 1:50



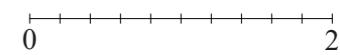


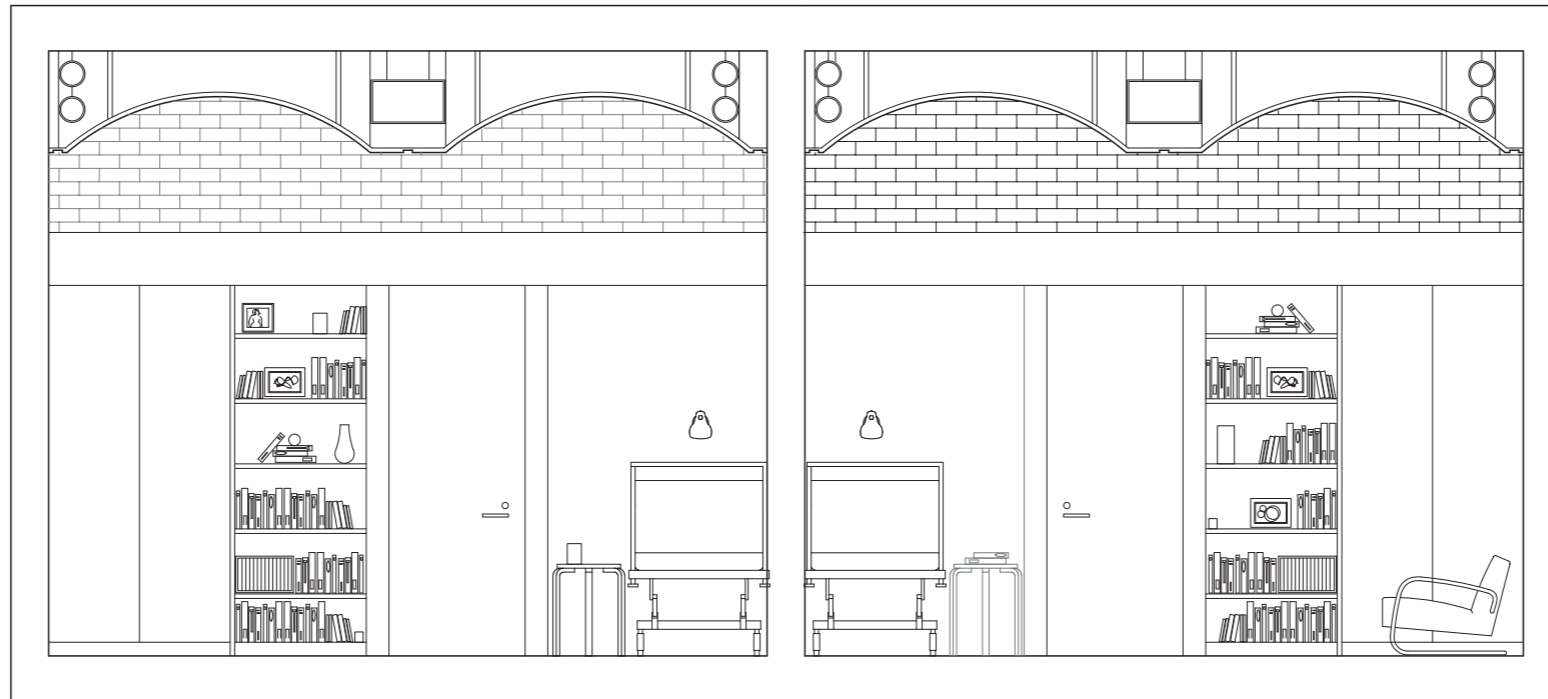
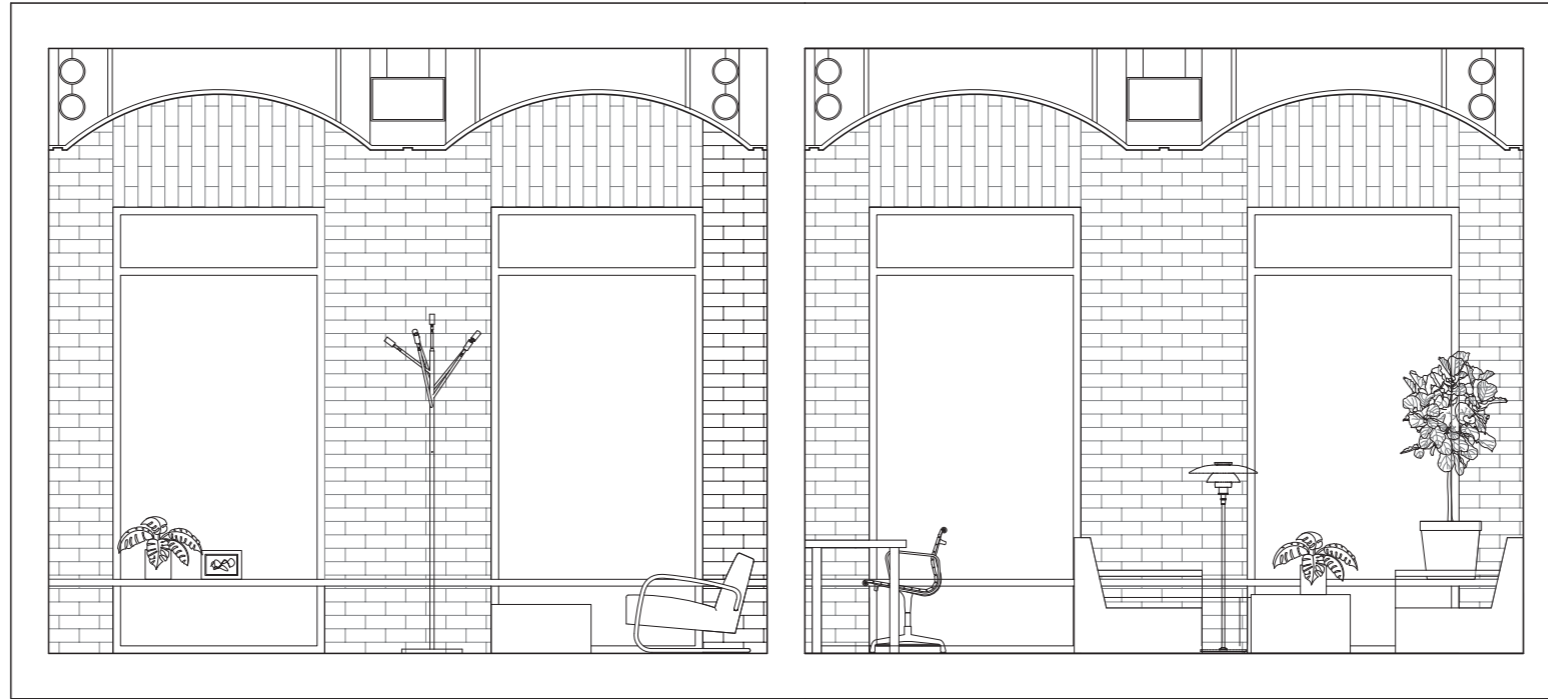
APARTMENTS & CORRIDOR PLAN 1:50





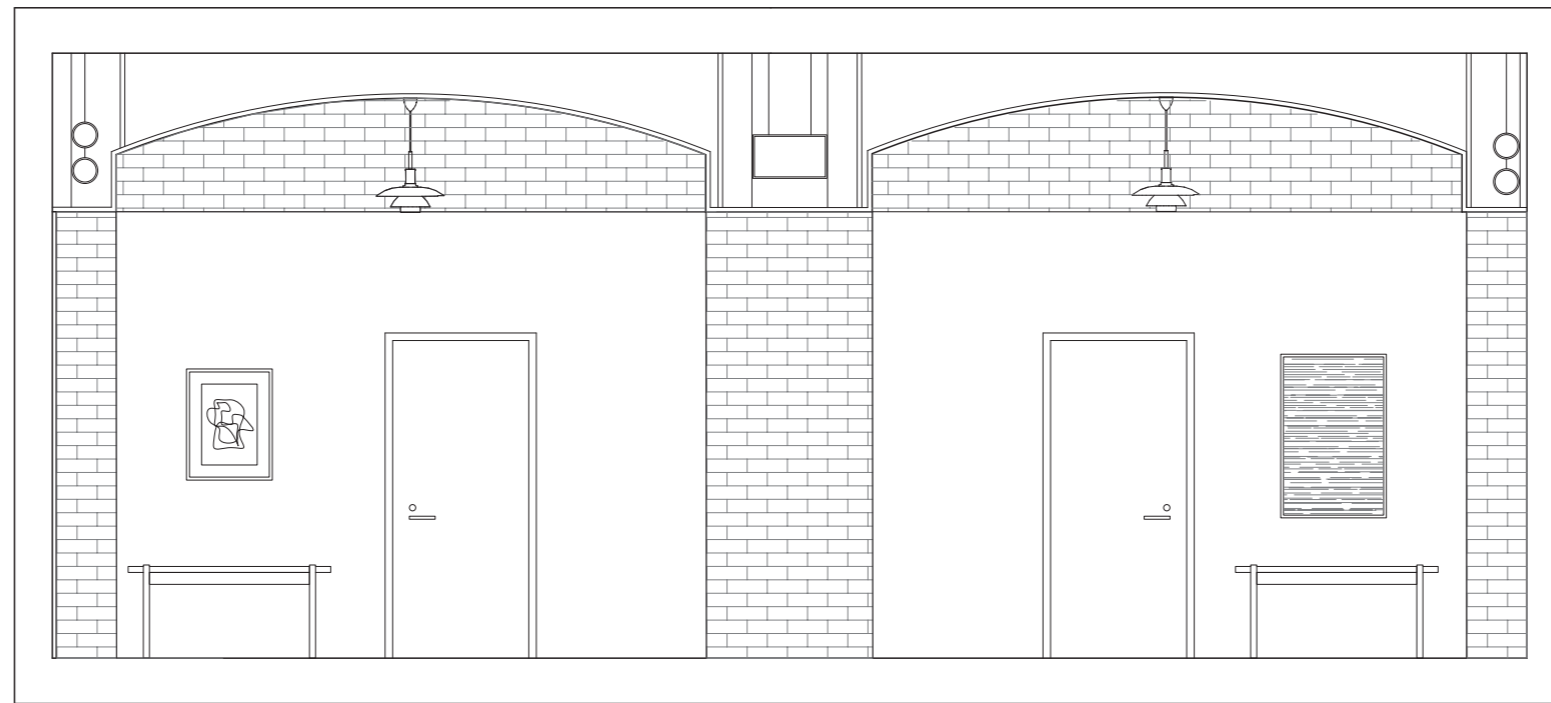
APARTMENTS & CORRIDOR PLAN 1:50



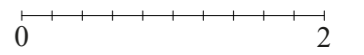


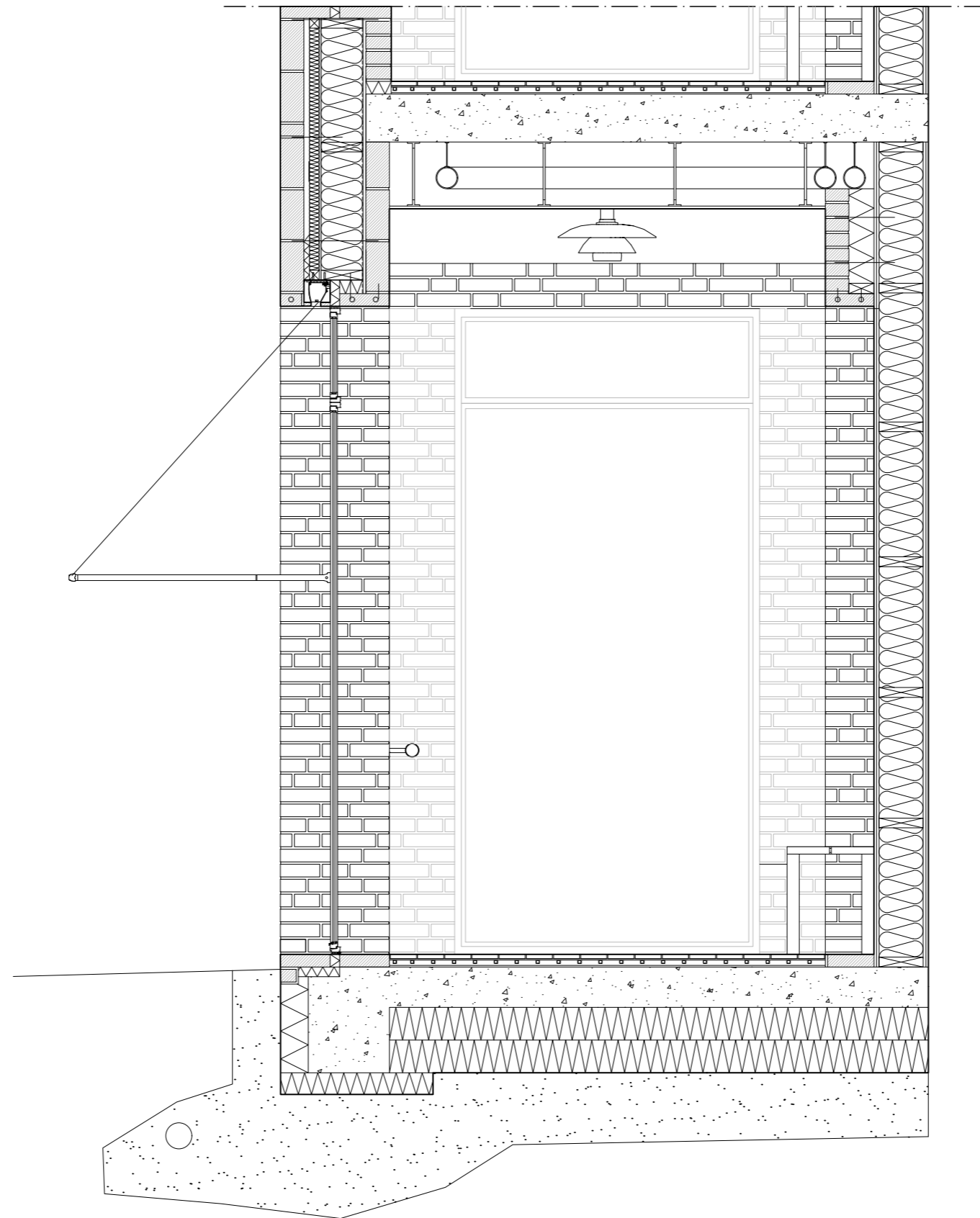


GROUND FLOOR APARTMENT

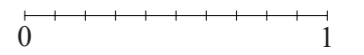


CORRIDOR ELEVATIONS GROUND FLOOR 1:50



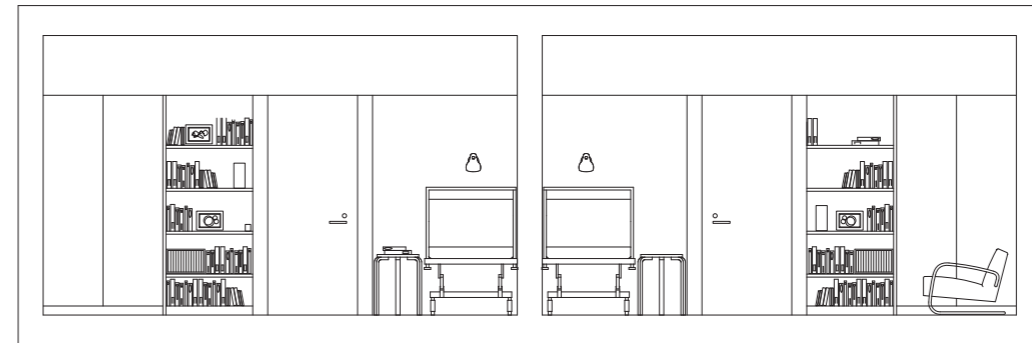
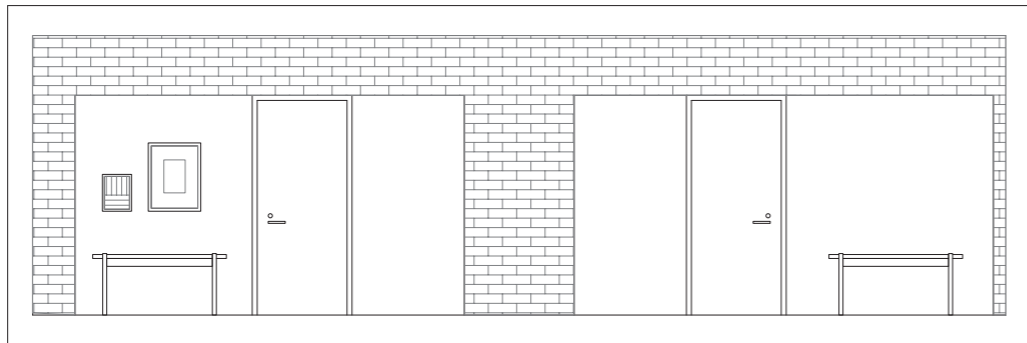
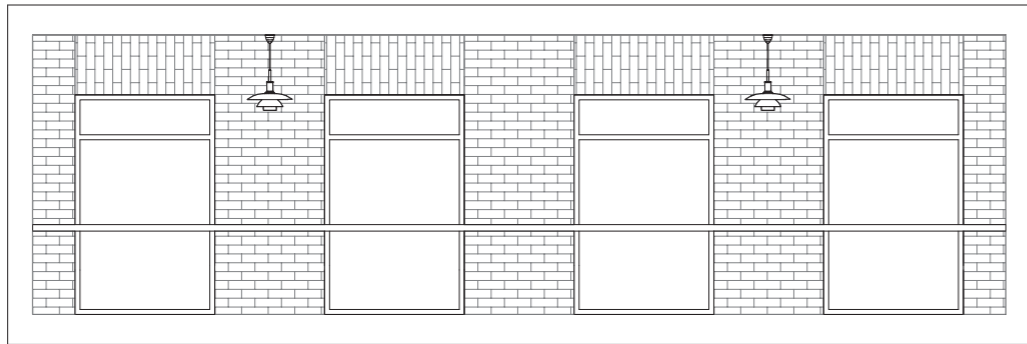


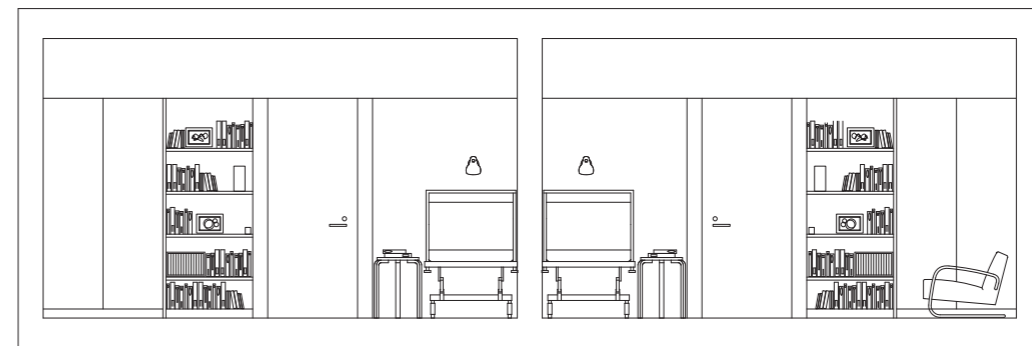
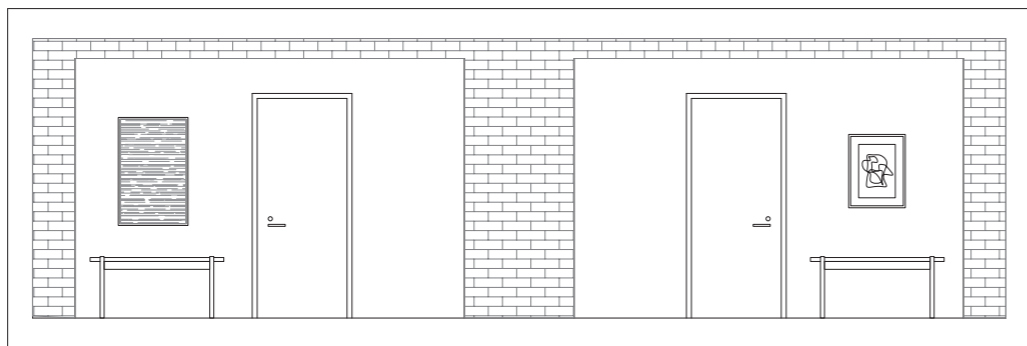
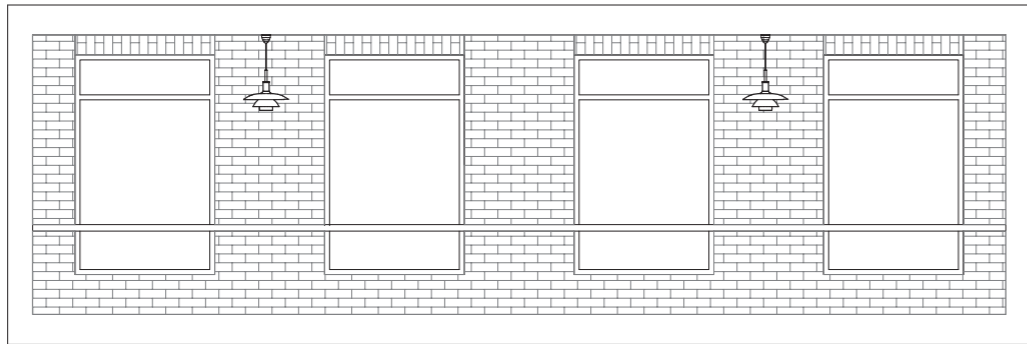
CORRIDOR DETAIL 1:25

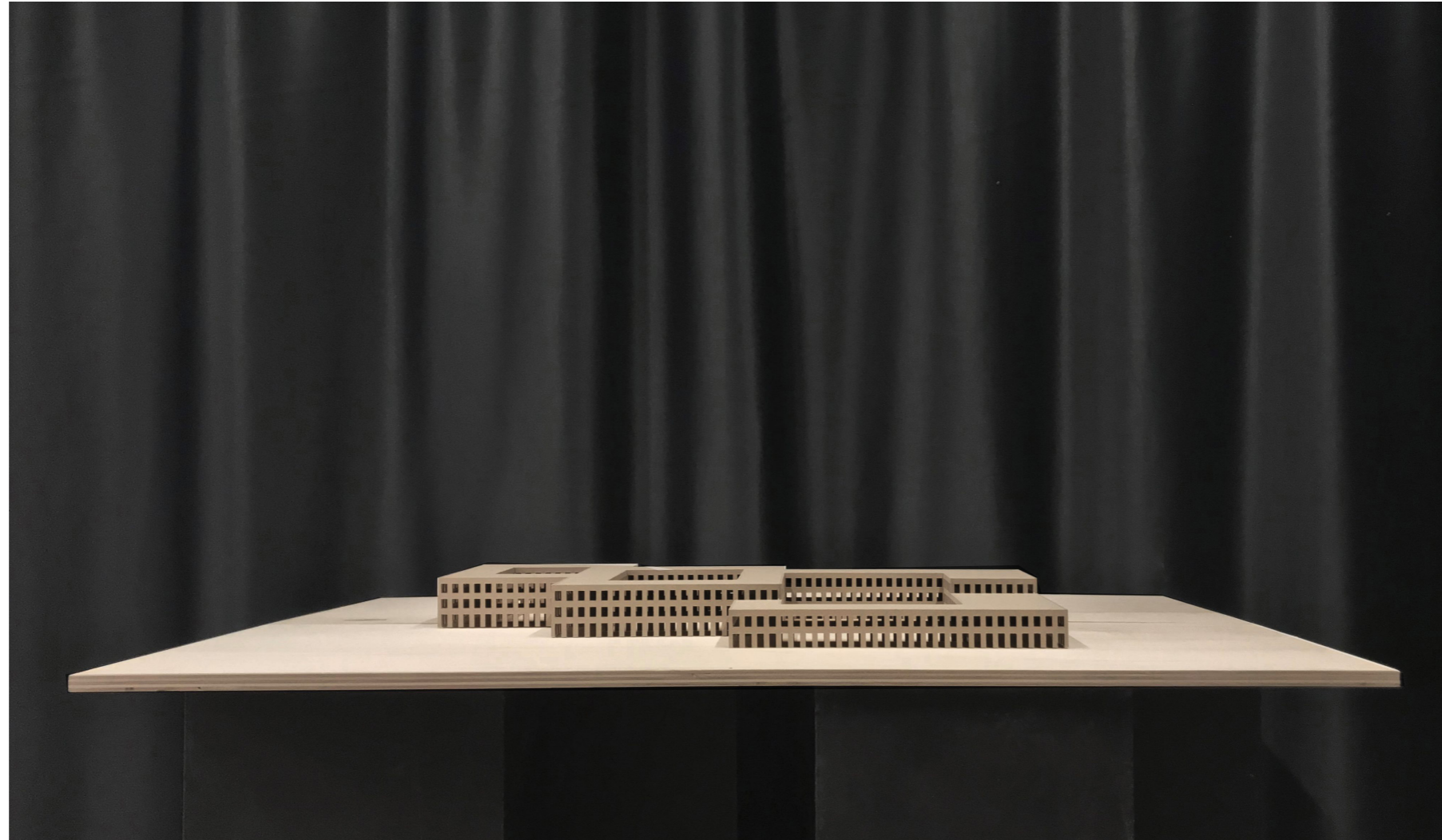




CORRIDOR







MODEL