



# WALK AROUND

Ebba Barkfors, Jalal Diarbakarli

ARK263 - Future visions for healthcare, housing and work 3: Healthcare architecture



# BACKGROUND

## SITE ANALYSIS



## A new health care center in the historical center of Karlskrona

### **Context**

The assignment is to create a new health care center in Karlskrona for the client Region Blekinge. The health care center contains a medical unit, a child care unit, a women's care unit, a dental care and a rehab. To create a public building we have added some functions such as a café, two meeting rooms and a restaurant. With those functions added we are creating a building that is active and in use more often.

Karlskrona was founded in the 1680s when the Royal Swedish navy moved from Stockholm to Trossö. The baroque buildings from this period are still standing and the city is therefore on the UNESCO World Heritage list.

### **Our ambition**

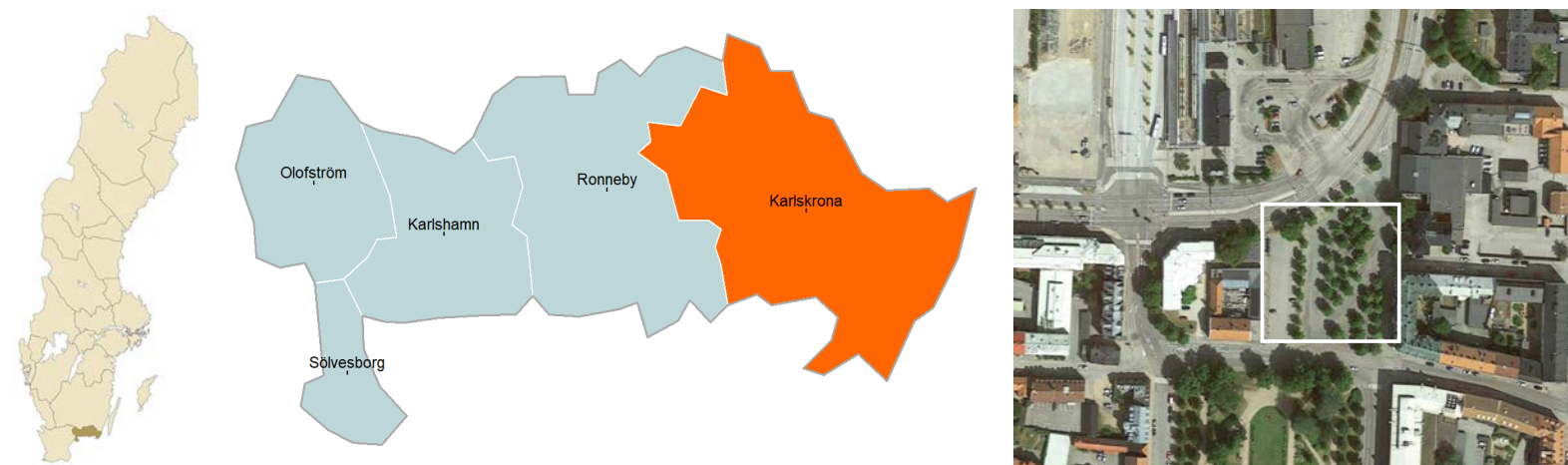
We are living in a special time when the effects of COVID-19 have changed our way of living. With that close in mind our aim with our proposal is to challenge the view of how a health care center can be used in order to make people feel safe.

The main strategy is to keep the flow of the staff separated from the patient's flow. And furthermore, we have analyzed the flow of patients and developed a new strategy for how we want patients to use and move around in the building.

To create a safe building, we have created a building where the patients have the possibility to move on the outside their whole visit.

In a normal situation there is a bigger waiting room in close connection to the main reception on the ground floor.

## SITE LOCATION



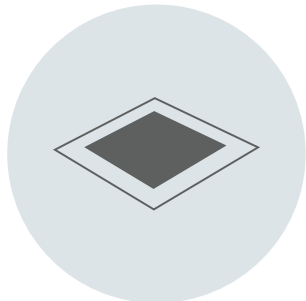
# DESIGN

## STRATEGIES



### Nature

Creating a connection to nature to increase well-being  
Remain and relocate the existing trees on the site



### Flow

Separating the flow of staff and patients help orientate and create a safe experience during a pandemic



### Human scale

A human scaled design regarding orientation, the experience and safety



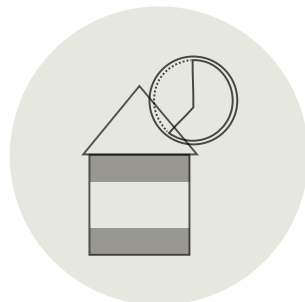
### Main axes

Remain the main axes because it is significant for Karlskrona



### History

Remaining the old rail tracks for its historical value



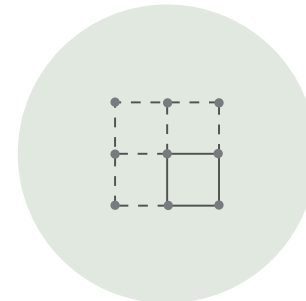
### Public

A public ground and top floor makes the building accessible longer



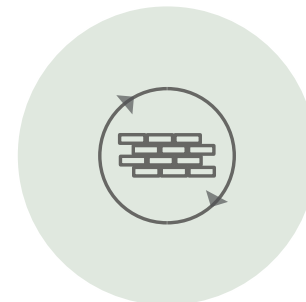
### Material

Green rooftops and a pond to divert and harvest water  
Using wood for the construction and the facade



### Flexible

Flexible structure creates an adjustable building

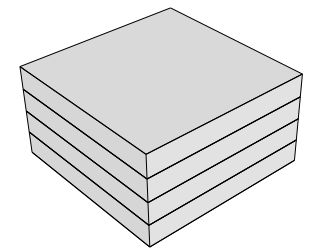


### Reuse

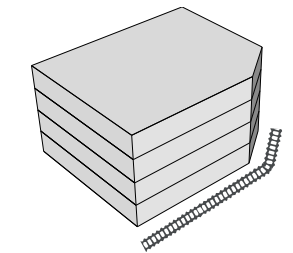
Reuse the bricks from the old health care center

## CONCEPT

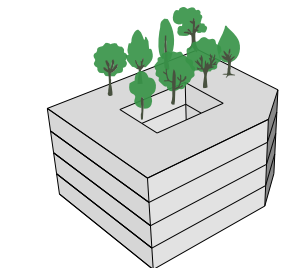
Ground shape that remain the main axes



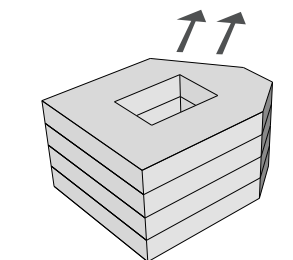
Adapting to the rail way tracks



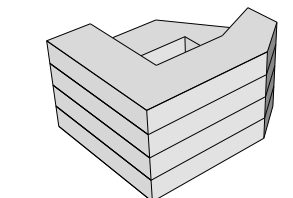
Adding inner garden



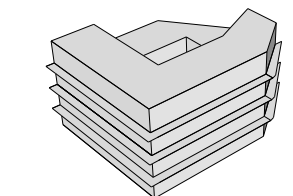
Adapting to the context  
Turning to where most people approach the building



Different heights to create sight views to the Höglands park



Balconies outside for the patient and visitors



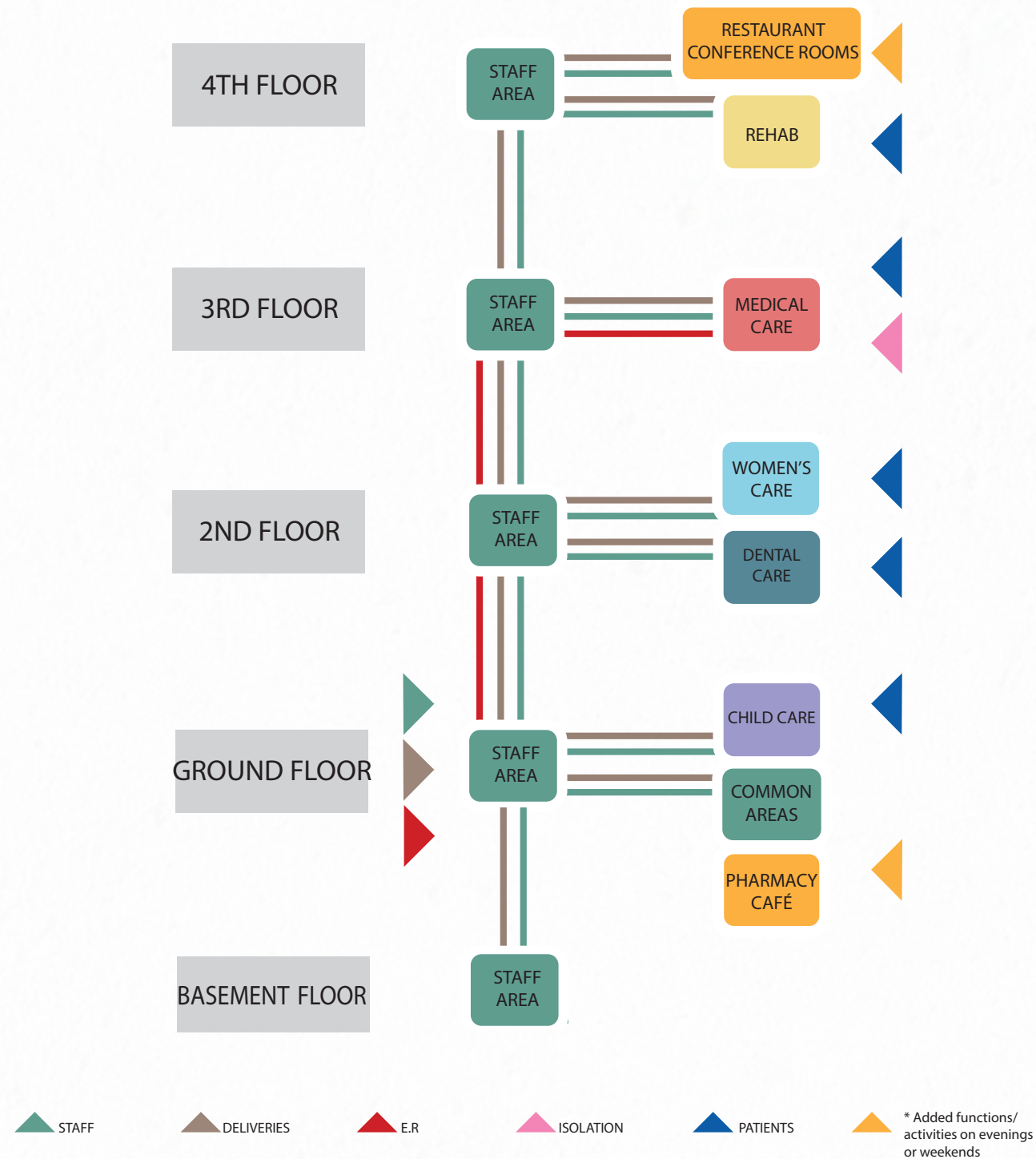
BRIEF, LOGISTICS AND HEALTH PROMOTING

SITE AND CONTEXT

SUSTAINABILITY AND FUTURE PROOFING



# FLOW

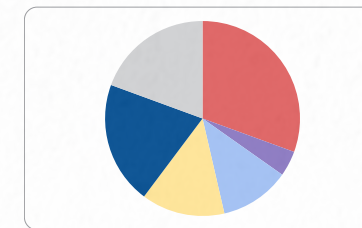
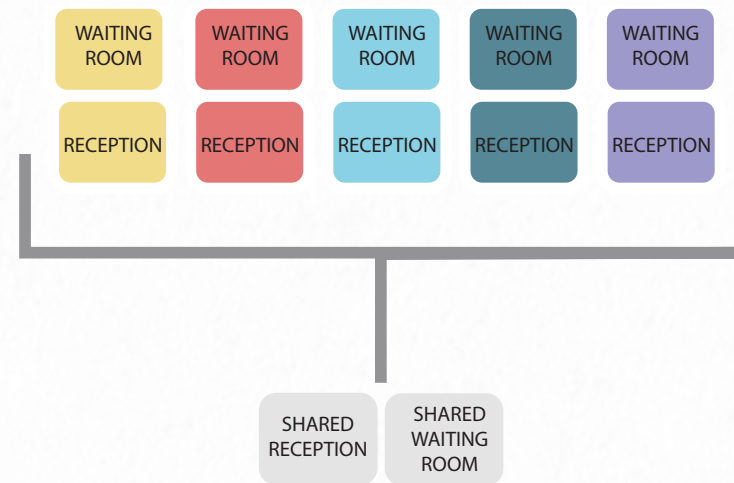


Patient and visitors can easily reach their destination through the stairs located in the inner garden. These stairs are outside and leads to every floor where there are balconies reaching every examination room in every unit. By making people move outside and have direct access to their specific examination room we have secured a flow with minimal areas where patients interact or meet each other.

# PROGRAM

Changes from the original brief were motivated by creating a building safe during a pandemic and at the same time saving space by looking at which functions could be shared or merged. Due to the saved space, we have added some public functions to create a building that is active longer. These functions can be found on the ground floor and on the top floor.

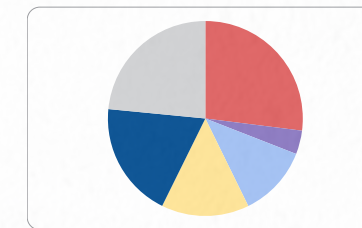
On the ground floor there is a shared, bigger, waiting room located close to the main reception which is serving the whole building.



Original brief

BTA 2591

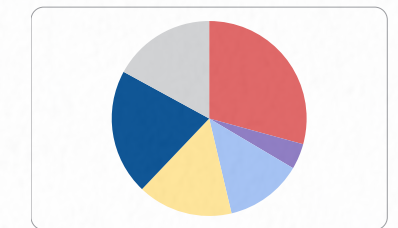
HEALTHCARE CENTER	SQMS
Medical care	792
Child care	109
Women's care	301
Rehab	359
Dental care	527
Common areas	503



Our brief

BTA 2862

HEALTHCARE CENTER	SQMS
Medical care	626
Child care	91
Women's care	274
Rehab	338
Dental care	544
Common areas	544
Added functions	543



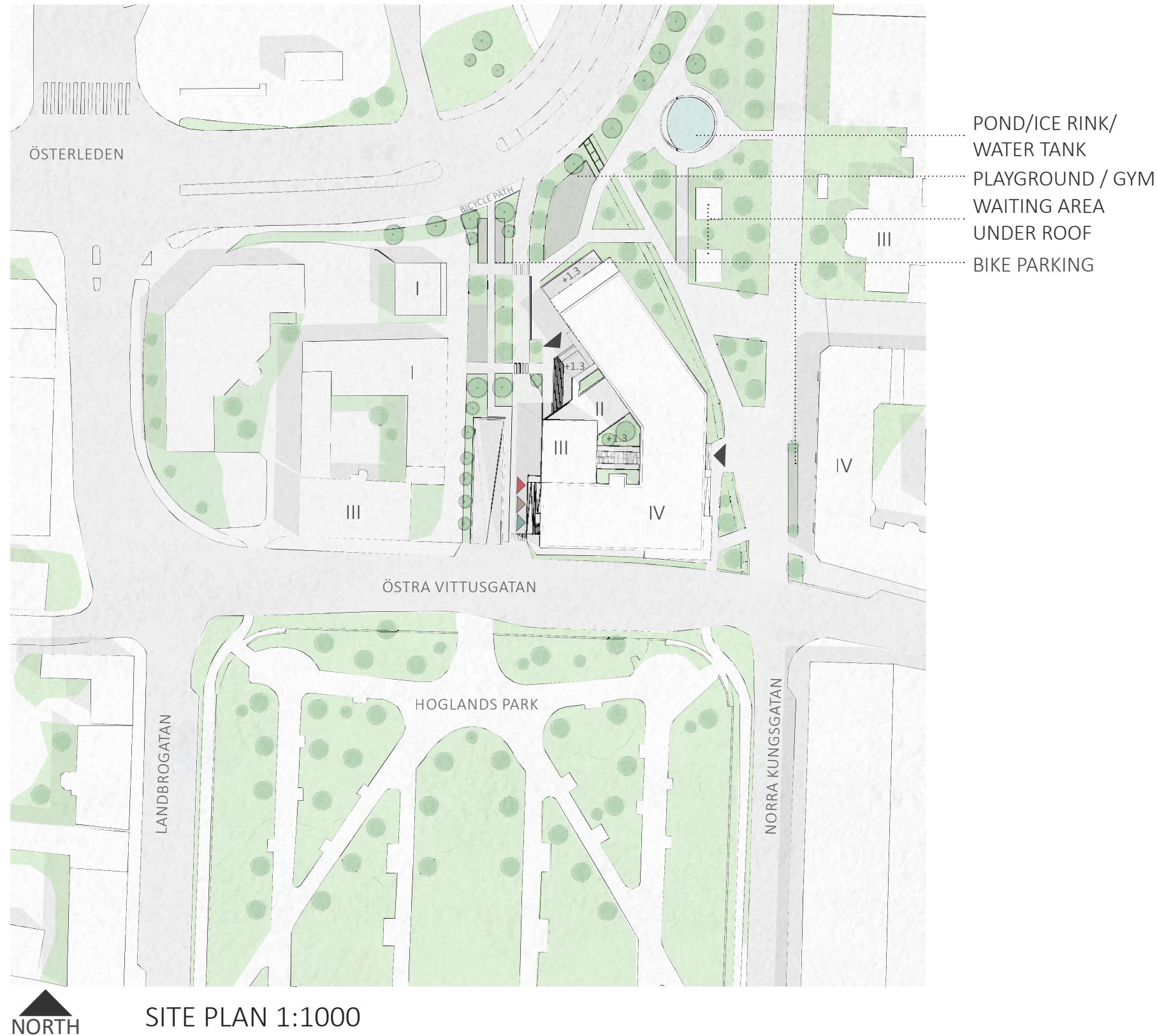
Our brief - above ground

BTA 2683

HEALTHCARE CENTER	SQMS
Medical care	626
Child care	91
Women's care	274
Rehab	338
Dental care	446
Common areas	365
Added functions	543



# SITE PLAN



Our building is shaped to maintain the historical rail way tracks which runs through the site. It is placed to remain a safe distance to österleden and it is angled in the north to connect to the new area Pottholmen, where the public transportation stops and to create a connection from inside the building to the Höglands park in the south.

Creating a site that is close to nature the building is surrounding a green inner garden, a green outside and to remain the connection to the Höglands park the building is lower in the west so that the highest floor plan has a sight view to the park.

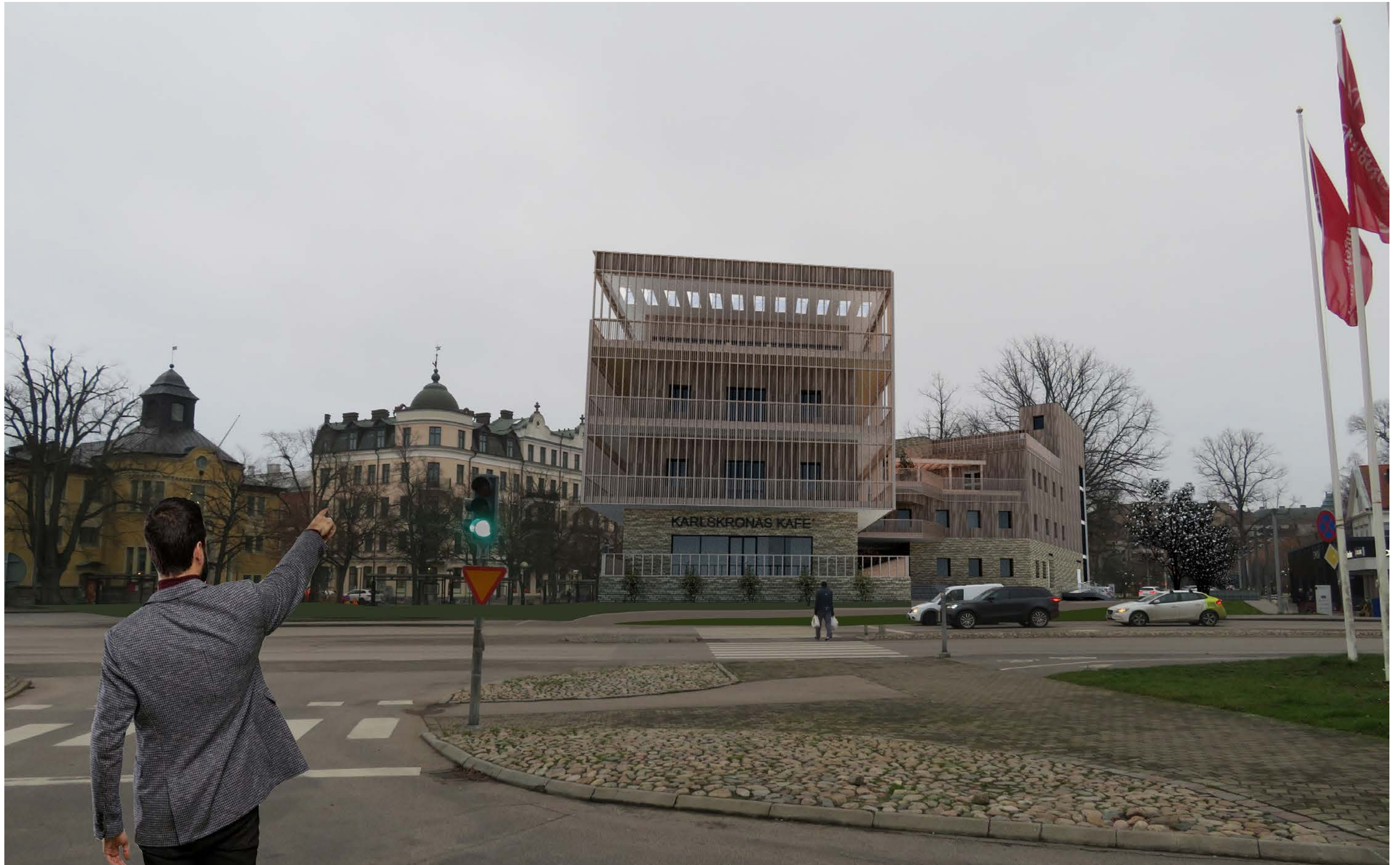
For the main entrance in the north west, the building is lower to create a more welcoming feeling.

By remaining the main axes to the east creates the opportunity for a area with bike parking, green areas, seating areas under roof and in the open and in the north part there is a pond that works as a ice rink in the winter. Since it is located in one of the lowest part on our site the pond also works as a water collector since it has a water tank underneath.

North of the building there is a playground located near the child care unit and there is also an outside gym next to it.

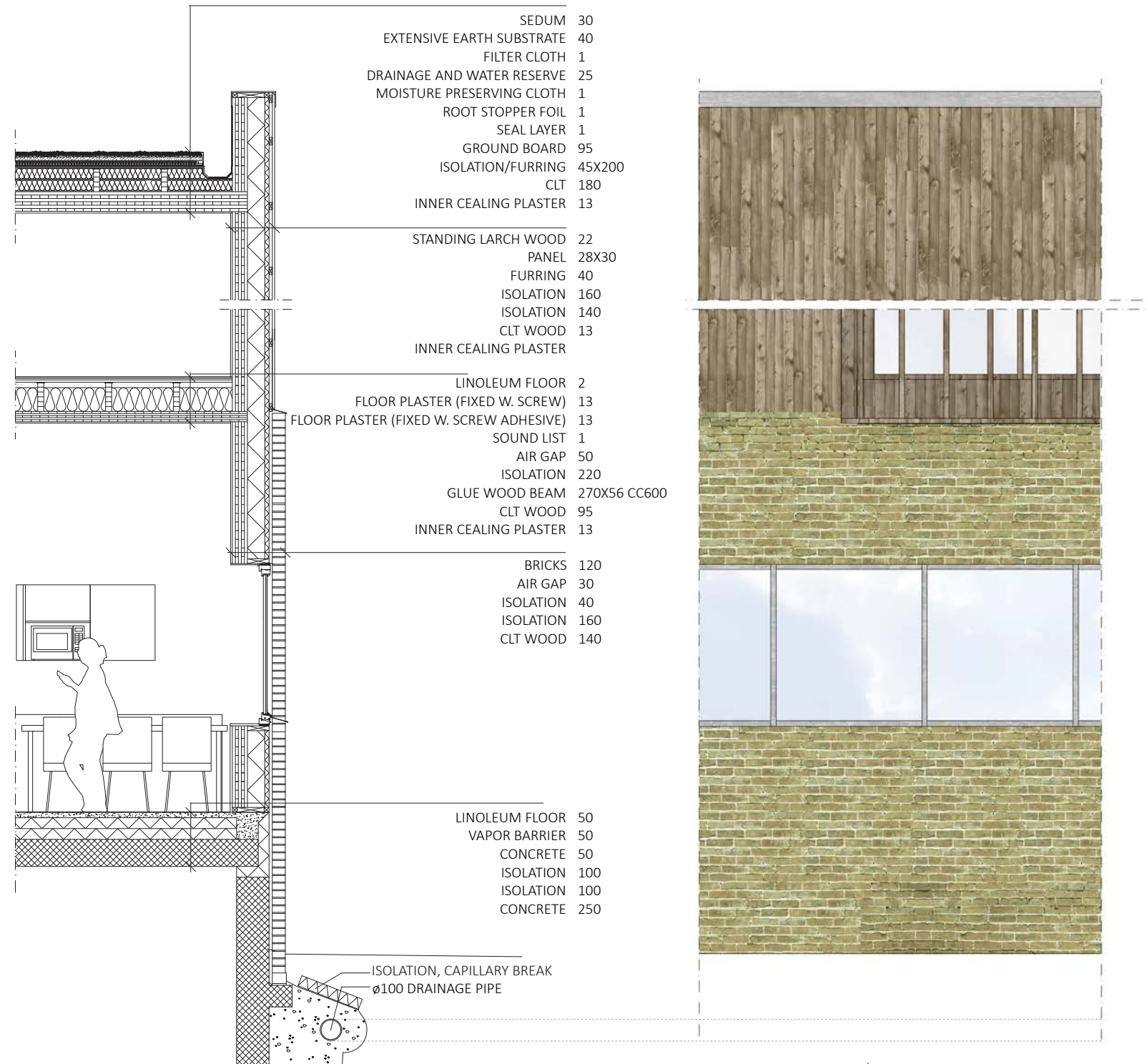
In the west of the building there is a parking for bikes, greenery, seating areas, the ramp down to the car parking and a road for the deliveries and the ambulance are connected to the main road in the north - making the way to the hospital easier and faster.







# STRUCTURE



Our building has a wooden structure that contains of bear loading outer walls and columns in the open space.

On the ground floor the building has a brick facade taken och reused from the old health care building. The brick facade starts under the ground, creating a smooth transition from where the building starts and the ground ends. The remaining floors have a larch facade that is untreated and will age beautifully with little maintenance required.

Our green rooftop serves as a water reserve and is part of our strategy to add greenery to the site.



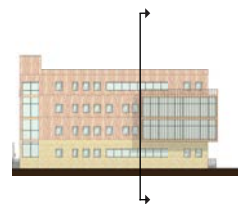
LARCH WOOD



RECYCLED BRICKS



SEDUM ROOF



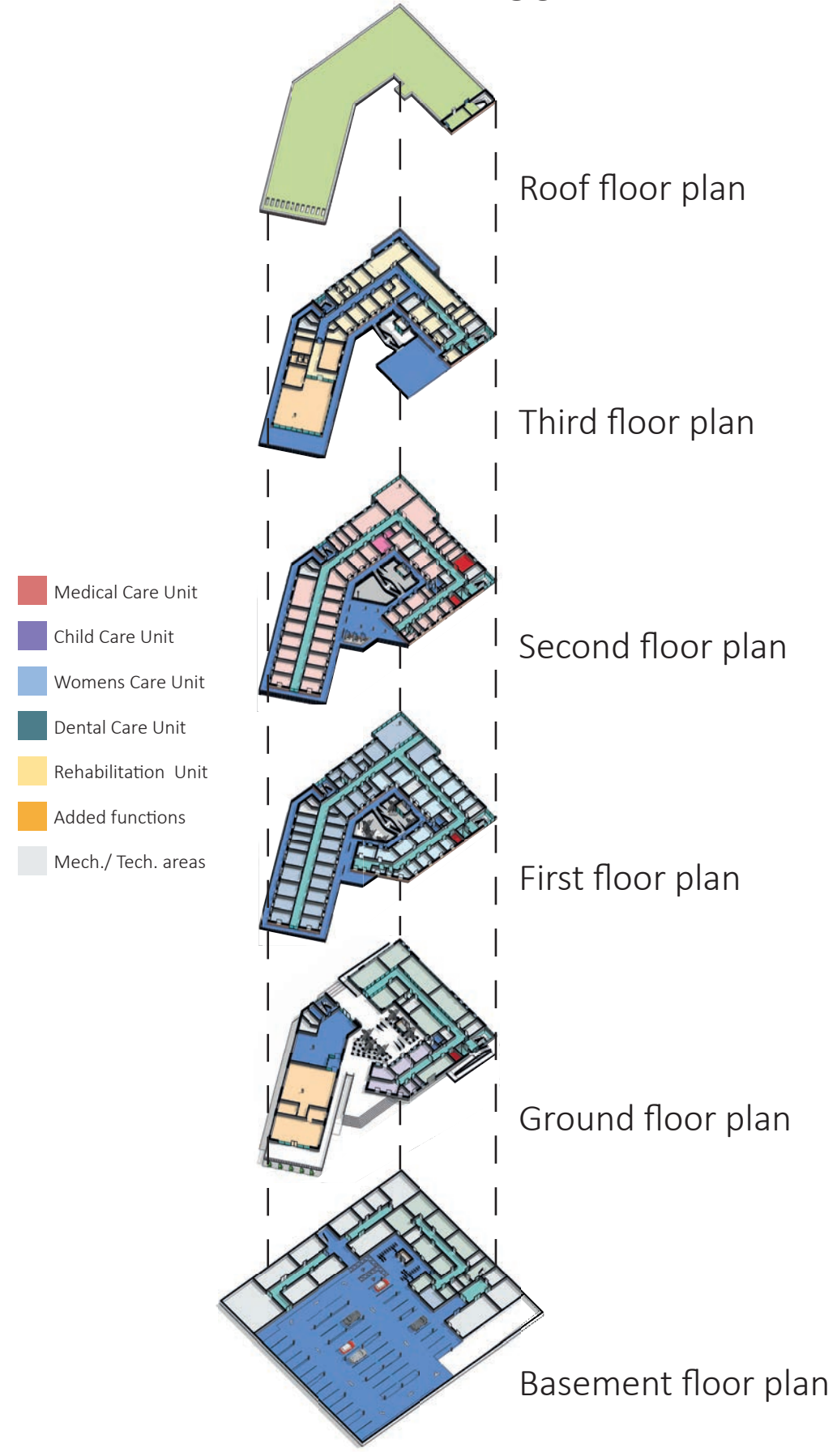
WALL SECTION 1:50





BASEMENT FLOOR PLAN 1:250

**VERTICAL CONNECTION AND DEPARTMENT LAYOUT**



- Medical Care Unit
- Child Care Unit
- Womens Care Unit
- Dental Care Unit
- Rehabilitation Unit
- Added functions
- Mech./ Tech. areas

Roof floor plan

Third floor plan

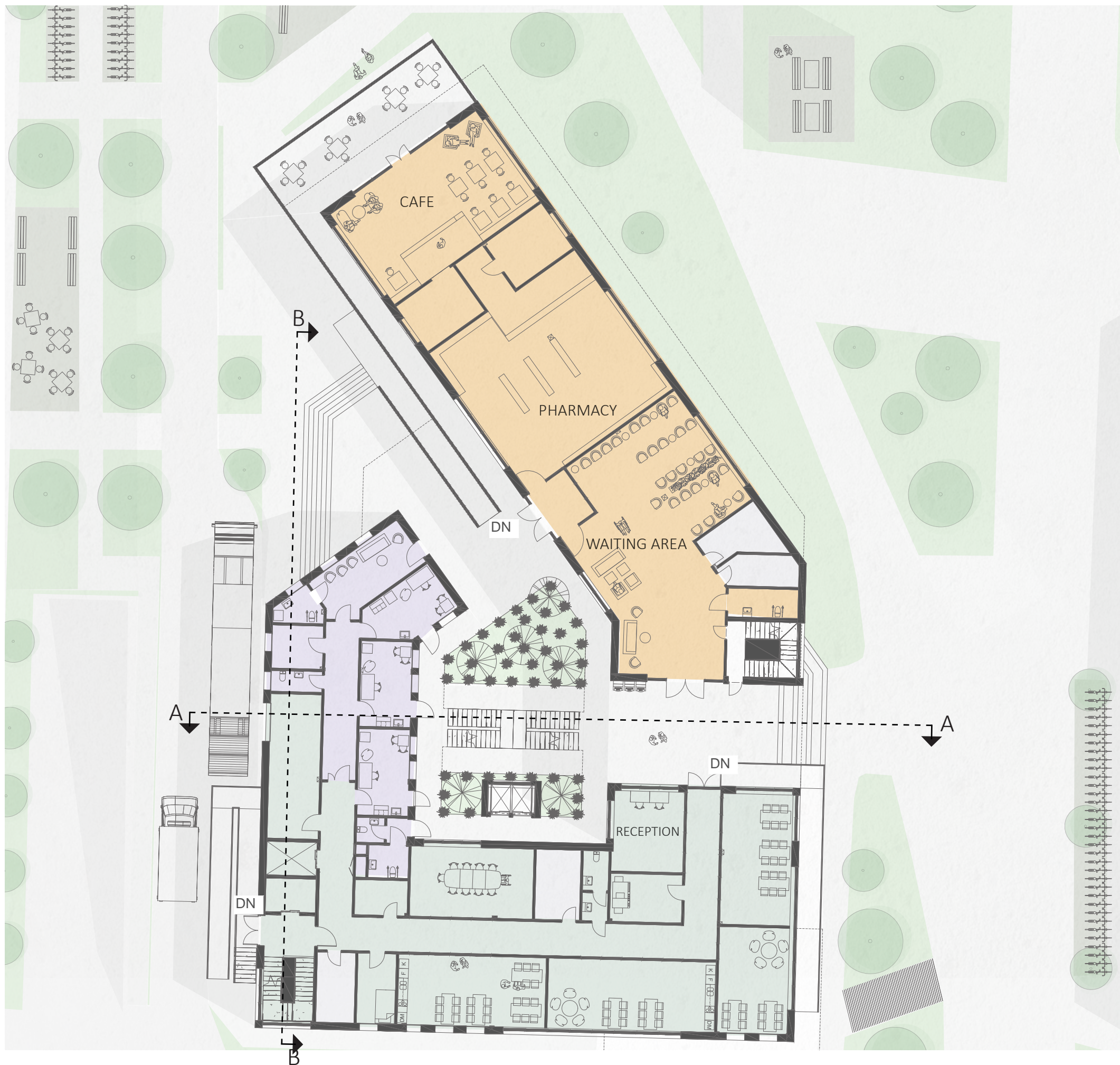
Second floor plan

First floor plan

Ground floor plan

Basement floor plan





For the patients and the visitors to our building there is two ways reaching the inner garden. Through the north west or to the east.

Bike parking and seating areas are available near both entrances. A playground in the north is located near the child care unit. Seating areas under roof is available to the east of the building, close to the reception and visible both when you approach the building from the north, east or the south.

The car parking is located in the basement. Where a bike parking also is available for staff. From the basement you can go up to the ground floor using the elevator or the stairs.

On the ground floor there is a café, a pharmacy, the child care unit, the shared reception and waiting area and common areas for staff located.

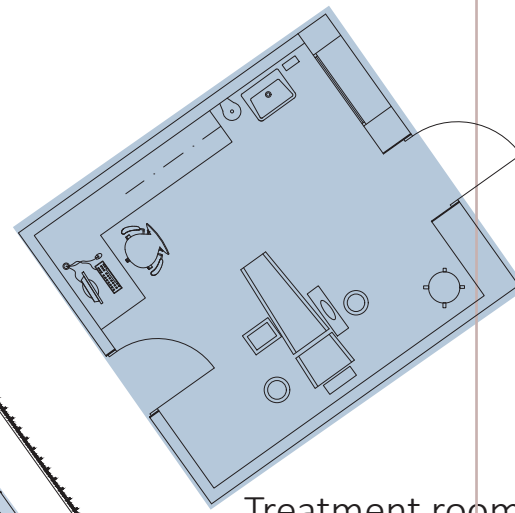
The staff, deliveries and the E.R all use the entrance located in the south west part of the building.

 NORTH GROUND FLOOR PLAN 1:250





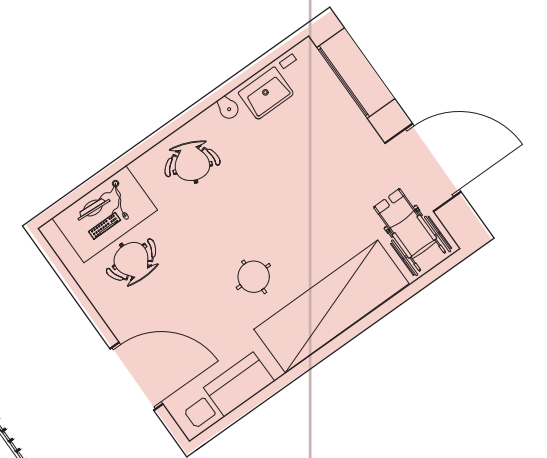
FIRST FLOOR PLAN 1:250



Treatment room  
1:100



SECOND FLOOR PLAN 1:250

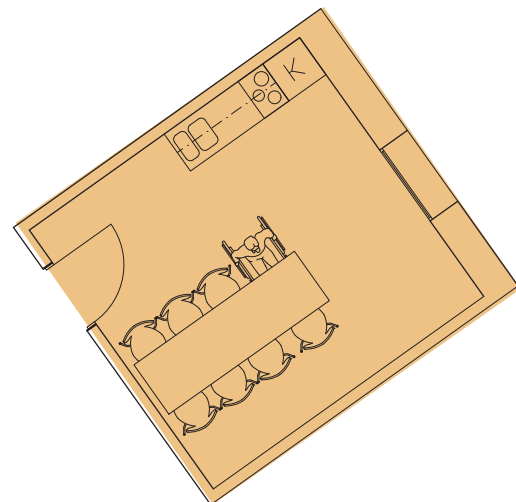


Examination room  
1:100





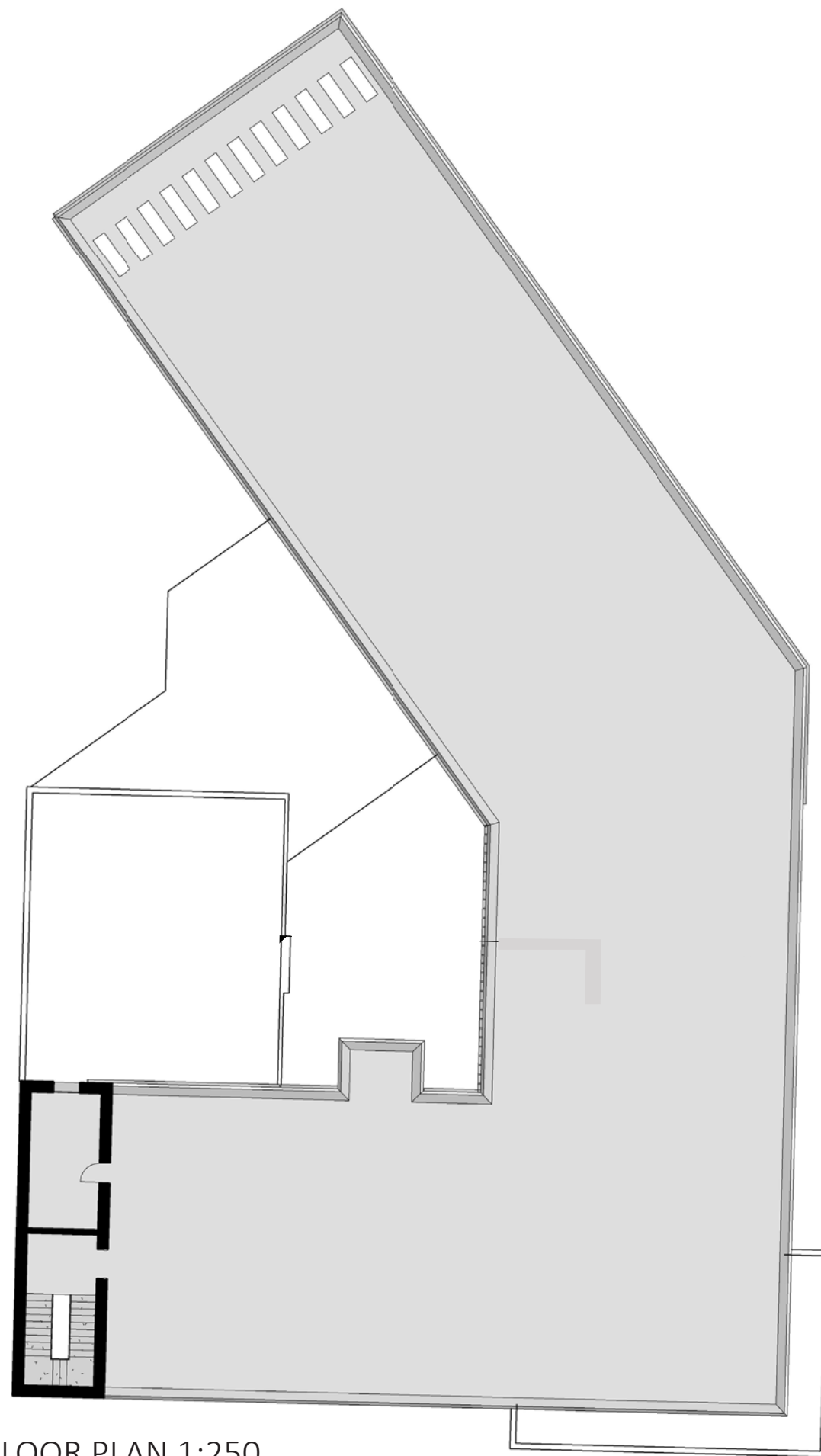
THIRD FLOOR PLAN 1:250



Meeting room  
1:100



NORTH



FOURTH FLOOR PLAN 1:250



# PERSPECTIVE WEST







EAST ELEVATION 1:250



WEST ELEVATION 1:250





NORTH ELEVATION 1:250



SOUTH ELEVATION 1:250





SECTION A-A 1:250



SECTION B-B 1:250



# PERSPECTIVE NORTH EAST

