



MORE THAN HOME

Agnes Ståhl, Beatrice Sterner
My Starbrink & Xue Zeng

Dementia Village

The goal is to create a facility that provides a normal and independent everyday life in a safe and secure environment, taking into account every resident's own abilities. Public functions will help create a meaningful life filled with different encounters and activities. Furthermore, the program places a preschool close to the dementia village, which allows for shared spaces and activities that creates interactions between generations.

By paying close attention to the surrounding nature and context a creative problem solving attitude can generate a socially, ecologically and economically sustainable facility that brings positive effects both to its residents, its staff and the community.

Anneberg, Kungsbacka

The site is located in Anneberg, 6 km north of Kungsbacka. It takes about 30 minutes to drive from Gothenburg and the train takes about 20 minutes. The commuter trains stop at Annenberg every 15 minutes during rush hours.

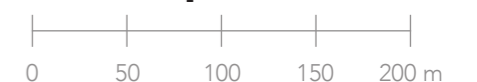
The plans for a new central area in Annenberg include:

- 400 new homes
- A nursing and care-home
- A preschool
- Housing with special services (BMSS)
- Public functions
- Recreational areas

The plot designated for this new area is located in a small valley going from north to south, in between two small hills. The location for the dementia village is located in the south of the current farmland. The ground slopes towards the river and is at risk of flooding, which had to be taken into account while designing.



Situation plan 1:4000





The feeling of home



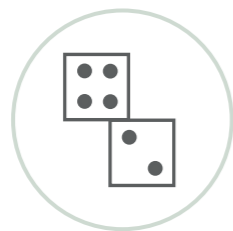
Connection to community



Healthy working environment



Provide privacy and ability to personalise your home



Provide activities and opportunities for socialising



Have a connection to nature both on the inside and outside



Connections and encounters through public spaces



Interaction across generations



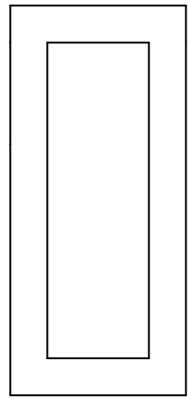
Easy communication and logistics



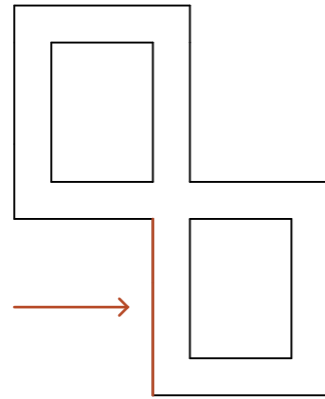
An inspiring workplace



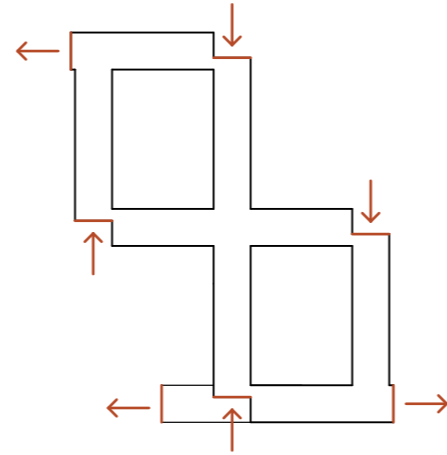
Opportunities for calm and recharging of batteries



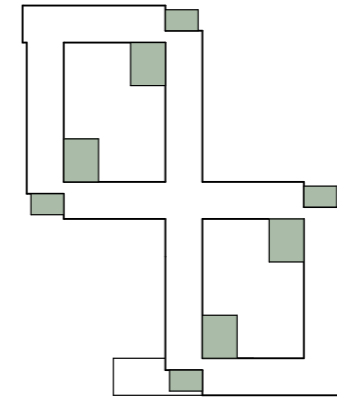
An enclosed space provides safety and relative freedom for residents.



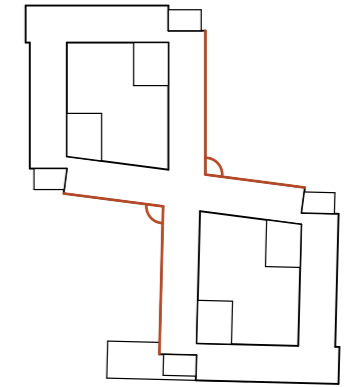
The volume is divided in two to keep scale and walking distances down.



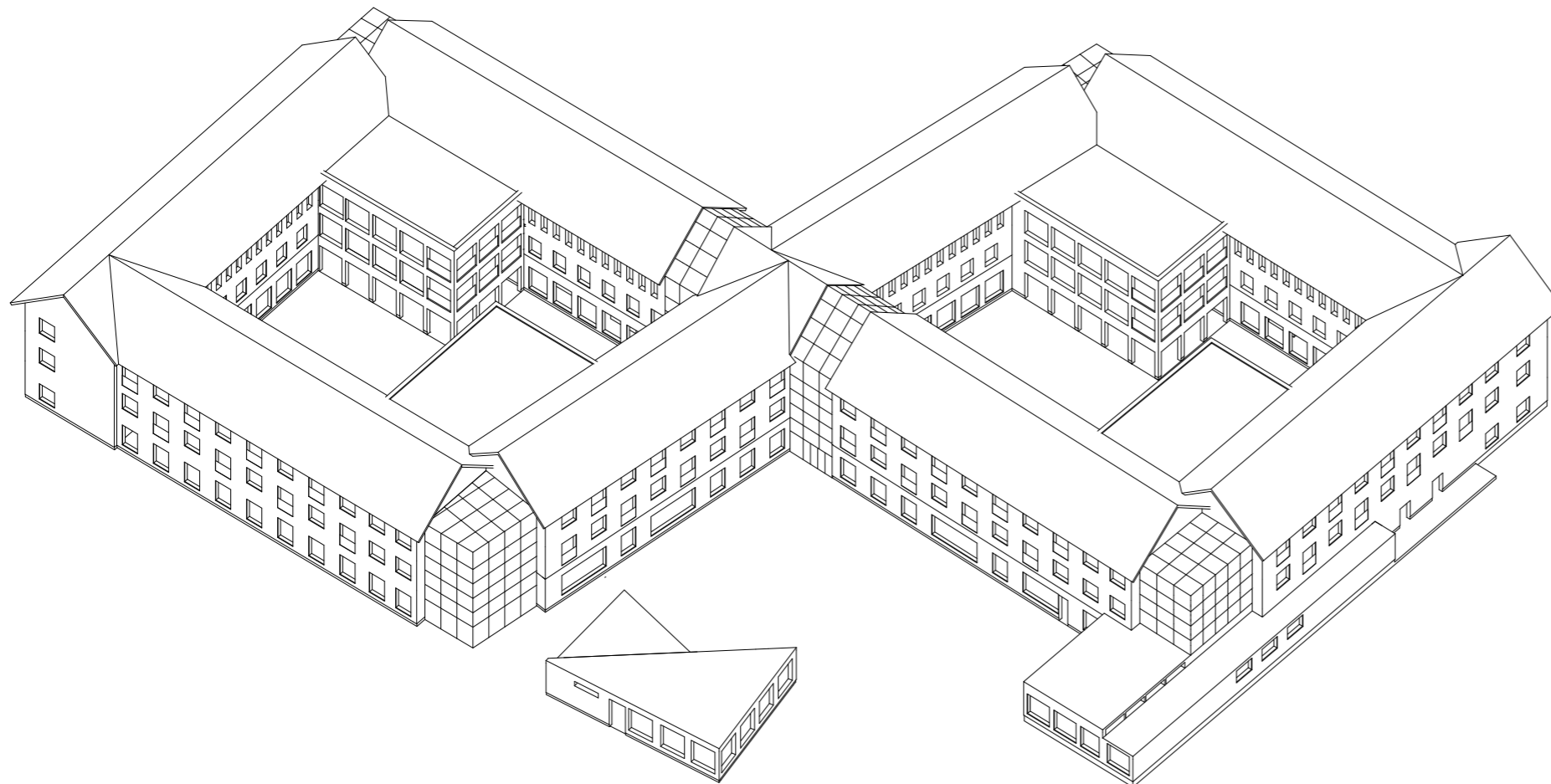
Corners are extruded or pushed in to articulate the different volumes.



Smaller volumes are added in the corners.



Finally the shape is skewed and adapted to the site conditions.



Final form

The facility is broken up into eight main volumes with a few smaller but more open volumes connecting them. These smaller volumes hold the units' common spaces and the winter gardens. The whole project is a wooden construction utilizing the proximity to the timber factory close by.

Connection to community

When arriving at the building, it offers a public plaza and facilities like a gym, a hair salon and a restaurant. This public plaza is open towards the west and the south, where the main movement from the train station and in the new area are going to be. The project wishes to blend with the local community and to be a place of activity and belonging.

Preschool

The preschool is located in a separate building in the northern part of the site, but shares some outdoor- and gathering spaces with the dementia facility. Most of the apartments have a view over the playground and the parking area by the creek.

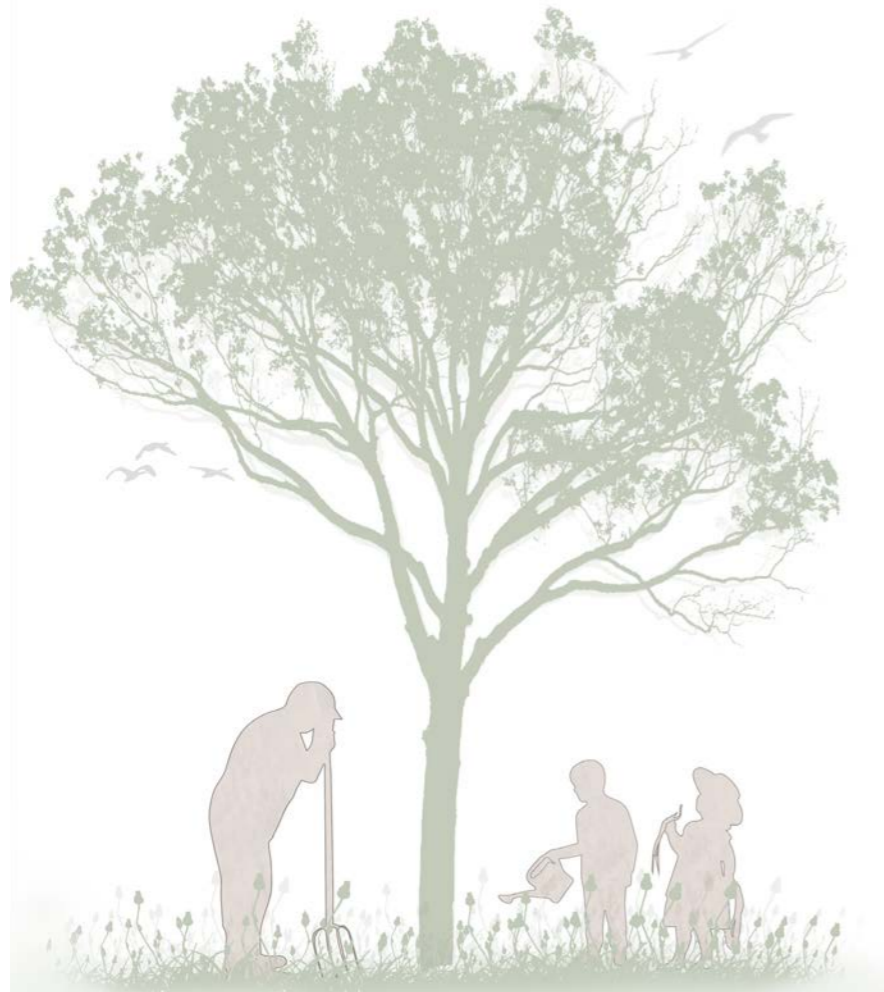


Illustration plan 1:1000



Landscape section 1:1000

Program disposition

All public facilities are facing the plaza in order to activate the space and to let the project give something back to the neighborhood. Here you can find the administrative areas, gathering facilities, a hair salon, a restaurant served by the facility kitchen and a gym catering to both the residents and others in the neighborhood.

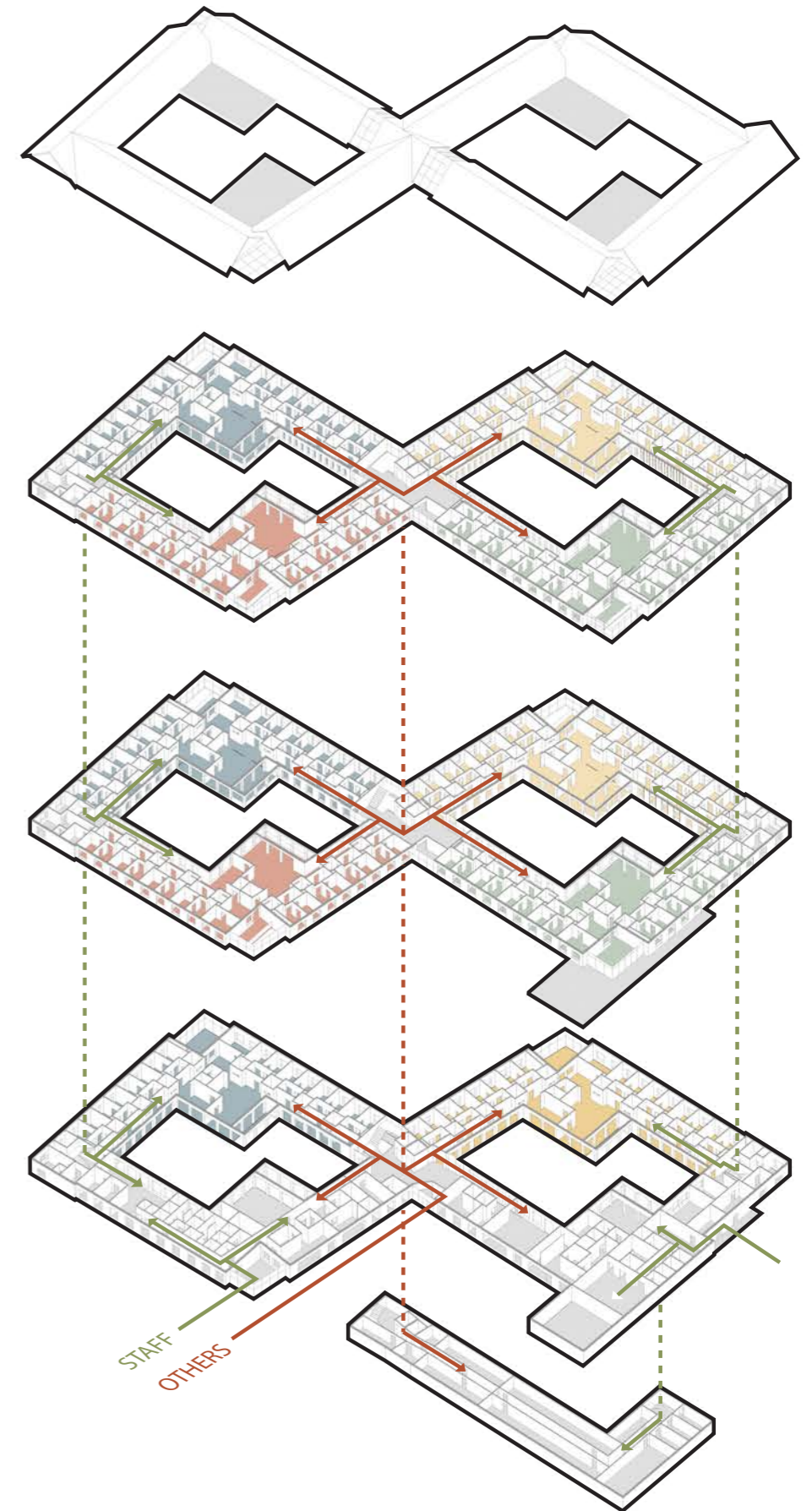
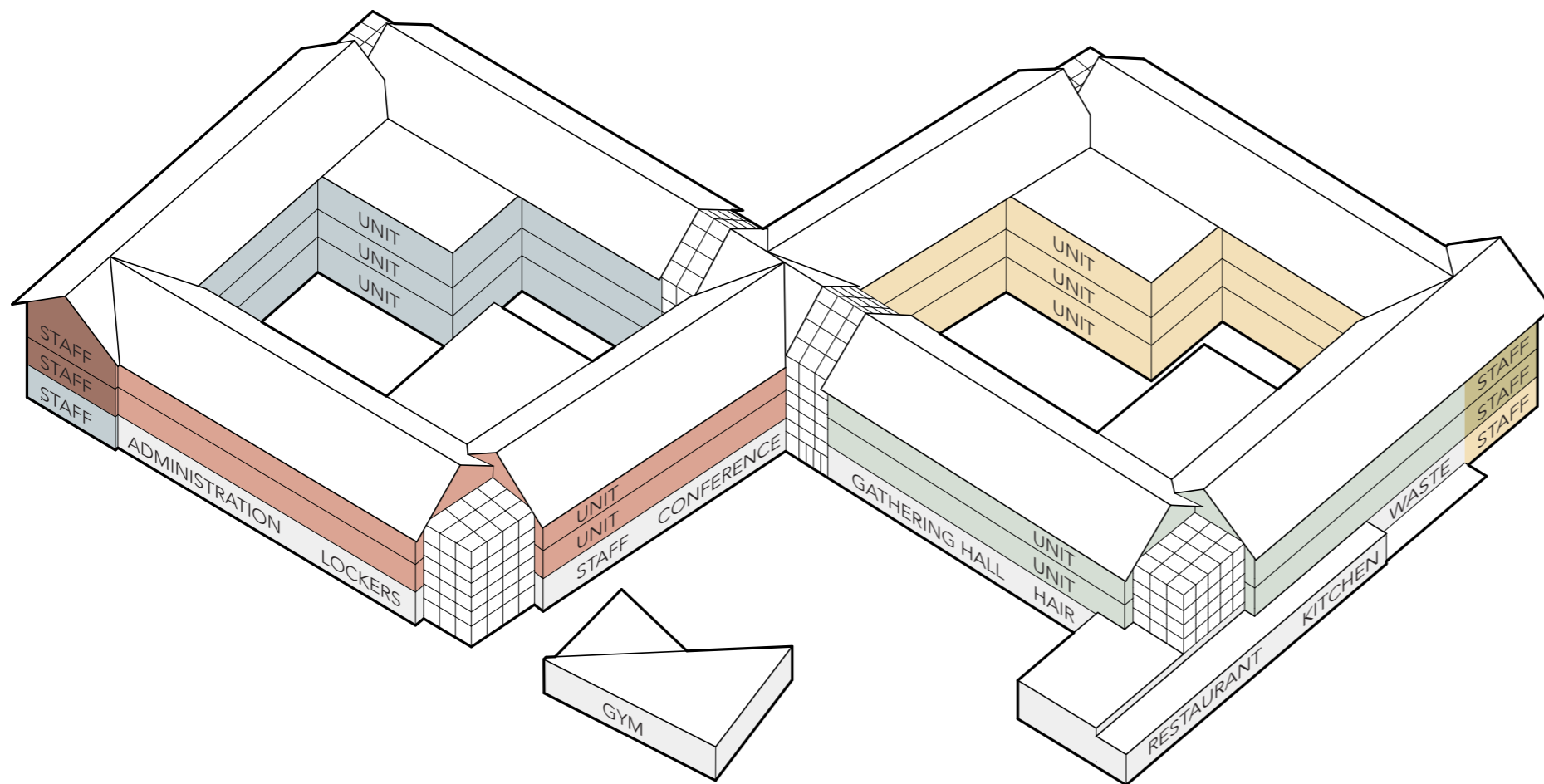
The ten units are divided across the three floors. Two of them are placed on the ground floor, but get privacy by facing away from the street and getting additional distance to the ground by the sloping landscape. Each pair of units share staff spaces in the corner between them, while a common documentation room by the central communication hub gives a good overview of all units for both day- and night staff.

The basement holds the technical spaces as well as both general-, tenant and restaurant storage.

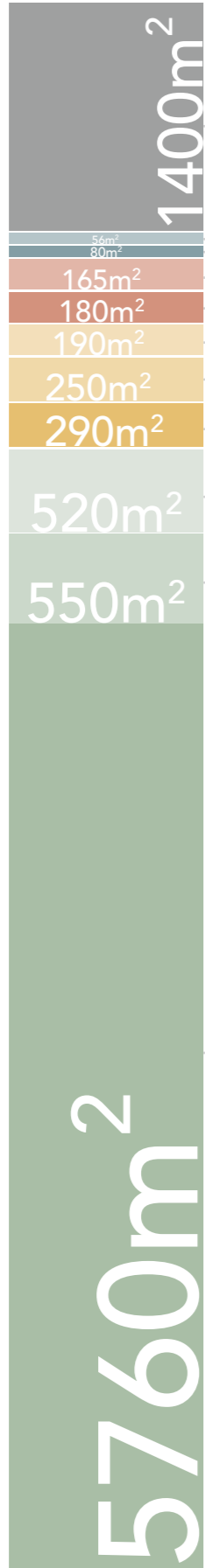
Circulation

The main circulation space is located in the center of the building with close connection to all units. This makes it easy to access every part of the building from the main entrance. In addition there are two smaller staircases connecting the staff facilities shared by two units. These can be used by staff for vertical communication as well as for fire escape.

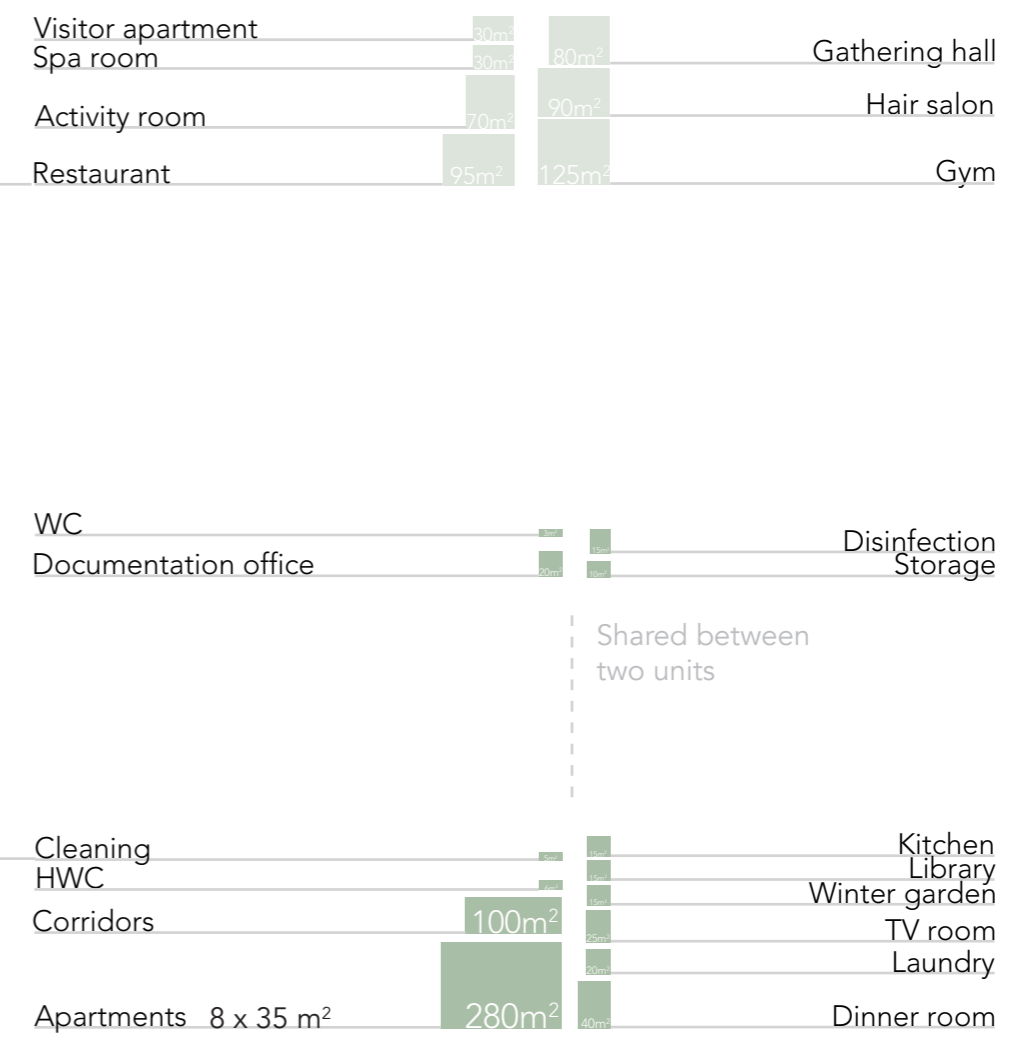
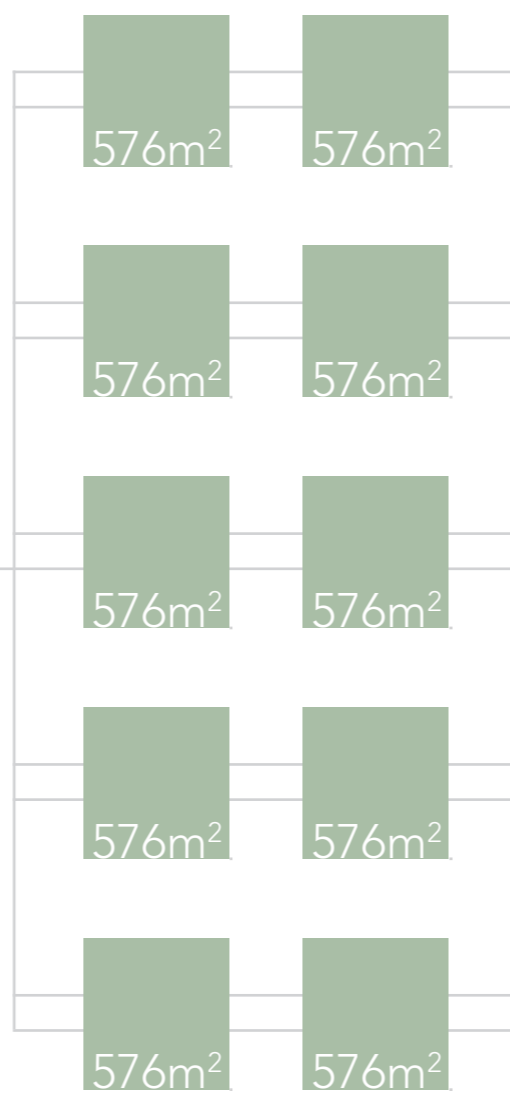
By the loading dock there is an extra elevator and stair going down to the basement, to provide simpler and safer deliveries to the facilities.



TOTAL AREA 10000m²



- Preschool
- Flexiroom
- Delivery & Waste
- Kitchen
- Support
- Admin
- Technical
- Staff
- Common & Public
- Communication
- Units



Public:

- 1. Entrance hall/ Reception
- 2. Guest apartment
- 3. Gathering hall
- 4. Hair salon
- 5. Restaurant
- 6. Gym

Staff:

- 7. Garden storage
- 8. Kitchen
- 9. Dishes
- 10. Delivery
- 11. Waste - Restaurant
- 12. Waste - Assisted living
- 13. Resting room
- 14. Administration
- 15. Changing room
- 16. Lunch room
- 17. Conference room
- 18. Drug storage

Residents:

- 19. Flexi room
- 20. Spa
- 21. Activity room
- 22. Apartments



Ground floor 1:400

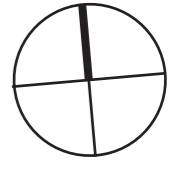


Staff:

- 1. Office, night staff.
- 2. Laundry
- 3. Cleaning
- 4. Office
- 5. Storage
- 6. Disinfection

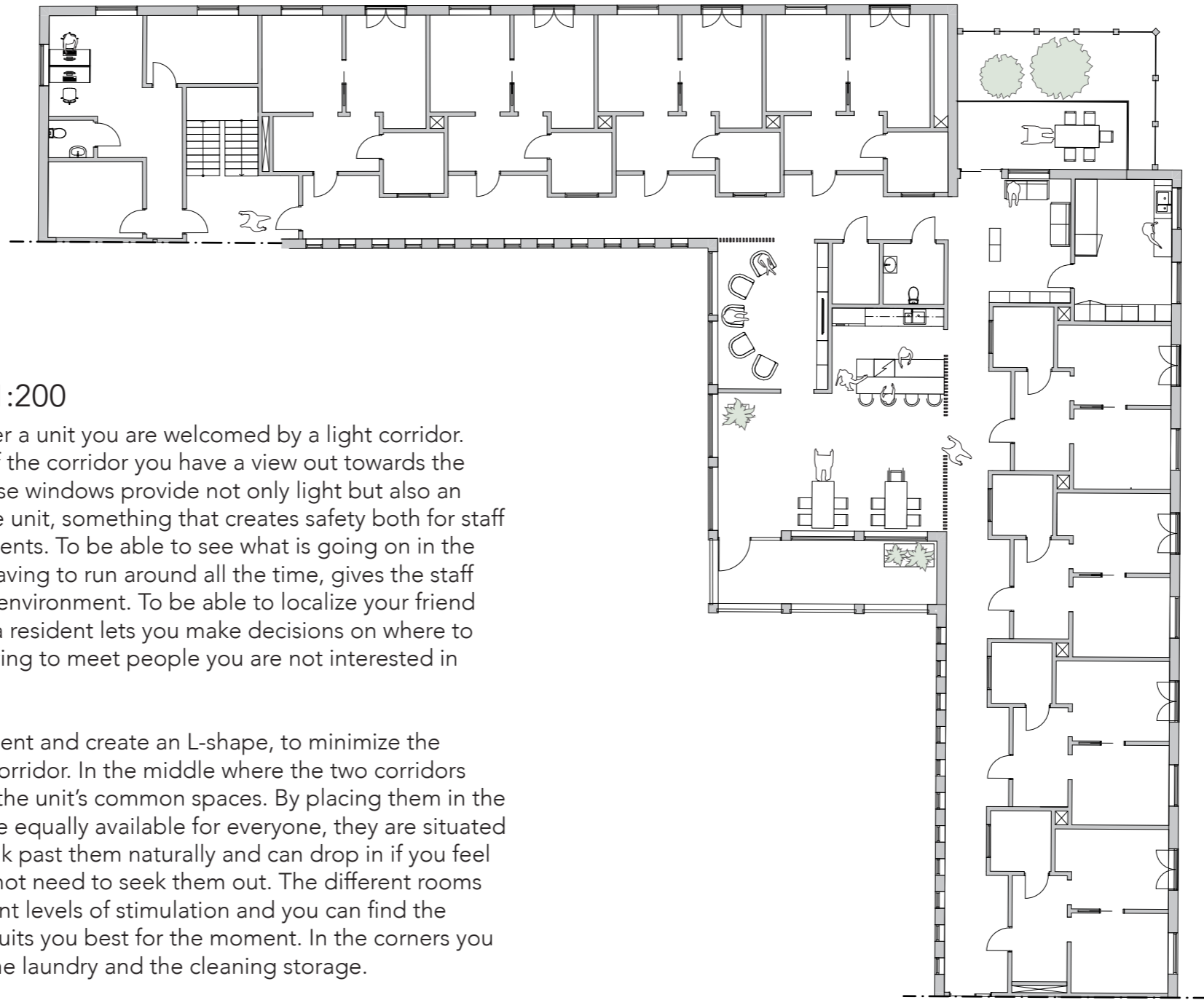
Residents:

- 7. Kitchen/ Dining room.
- 8. Tv-room
- 9. Library
- 10. Winter garden
- 11. Apartment



Upper floors 1:400



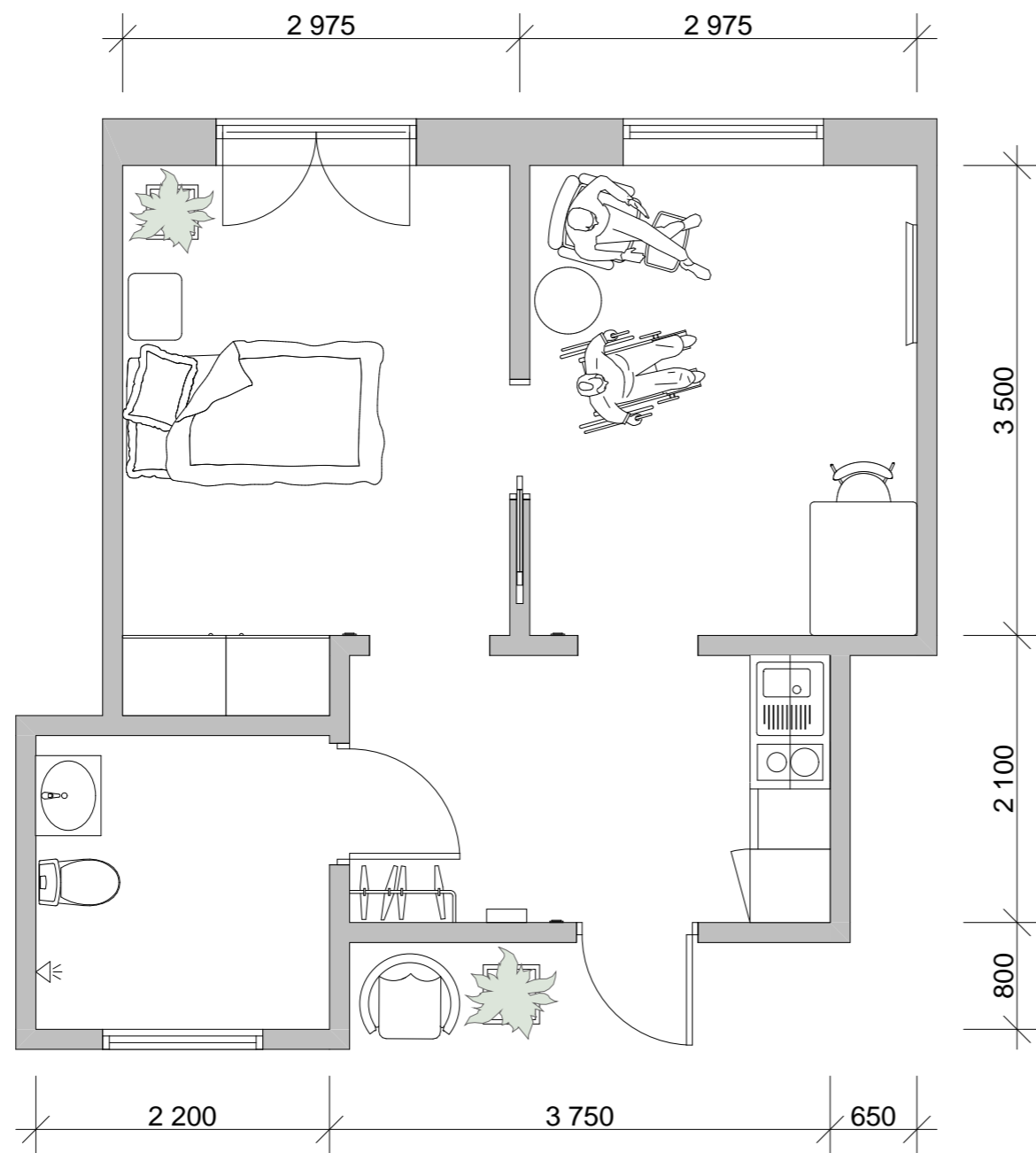


Unit plan 1:200

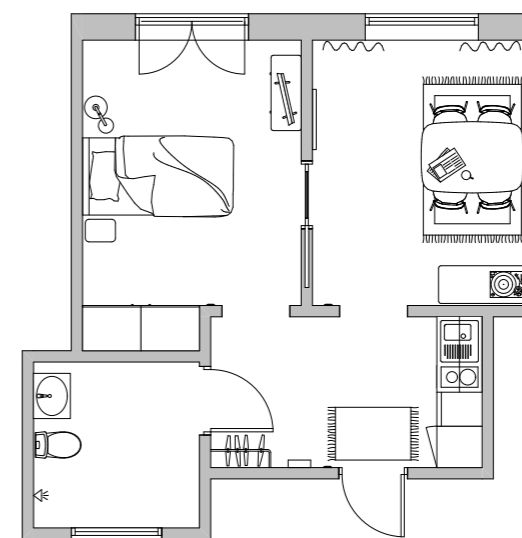
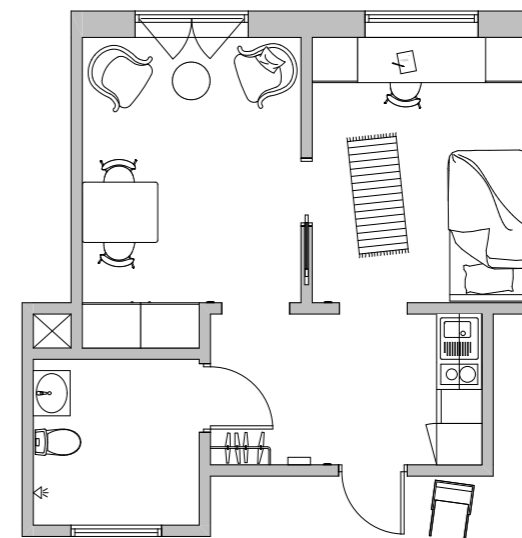
When you enter a unit you are welcomed by a light corridor. On one side of the corridor you have a view out towards the courtyard. These windows provide not only light but also an overview of the unit, something that creates safety both for staff as well as residents. To be able to see what is going on in the unit, without having to run around all the time, gives the staff a calmer work environment. To be able to localize your friend or the staff as a resident lets you make decisions on where to go without having to meet people you are not interested in meeting.

The units are bent and create an L-shape, to minimize the length of the corridor. In the middle where the two corridors meet you find the unit's common spaces. By placing them in the middle they are equally available for everyone, they are situated so that you walk past them naturally and can drop in if you feel like it, you do not need to seek them out. The different rooms provide different levels of stimulation and you can find the situation that suits you best for the moment. In the corners you can also find the laundry and the cleaning storage.



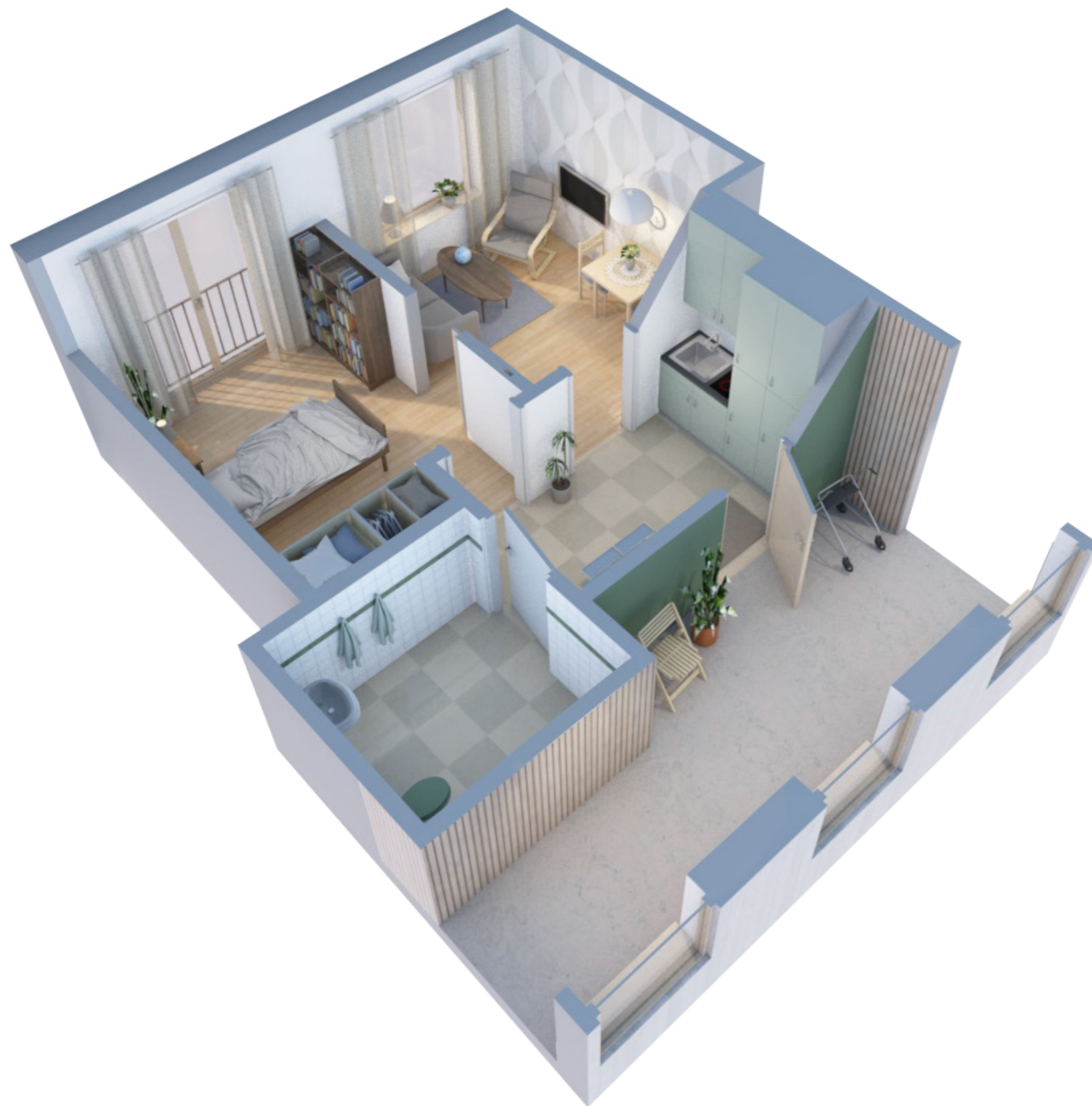


Apartment plan 1:50



Alternative plans 1:100





Apartment, 35 m²

The apartments are designed to function and feel like a home, not just a private room. The two general rooms allow for flexibility and personalization while providing variation even in the event of being isolated during a lockdown. The size of the rooms was set taking into account the accessibility that would be required for someone with severe dementia, and can accommodate a bed and the necessary space around it. At the same time a circular movement through the different rooms of the apartment is possible.

For a dementia patient there is a risk of confusion even walking out on your own balcony. The French balcony provides a direct connection from the apartment to the outdoors, while keeping in mind the safety aspect of not being able to walk out into the cold without the staff knowing about it.

The pantry is placed in the hallway to keep the generality in the other rooms.

The semi private pocket space outside the apartment can be furnished to ease wayfinding and recognition of your own home. The pocket spaces are painted in a calm colour to add contrast and signal, it also helps to ease wayfinding. The colour chosen is a mosse green inspired by surrounding nature.

A window with a high sill height gives daylight to the bathroom, making that space nicer to spend time in. The color green is added in the bathrooms as well, to add contrast to help the residents' daily life.

The TV room and the library

There are two different rooms to sit down and relax in. Sit down in the library in the space outside of the laundry to have a calm overview over the corridor. Here you can read a book or have a conversation. In the TV-room you can watch your favorite program together with your neighbors.

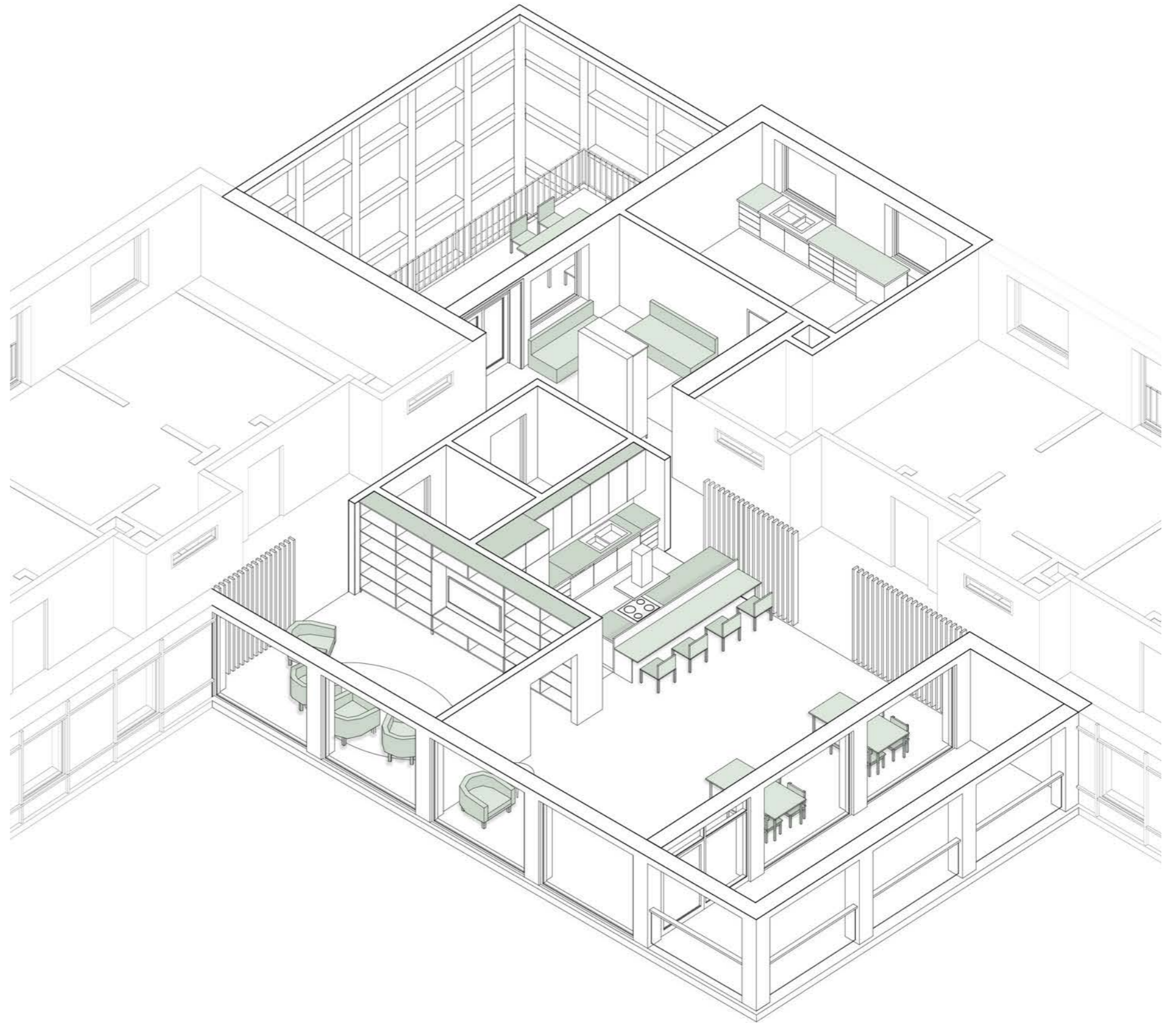
The social kitchen

The design of the kitchen lets the staff work undisturbed while still having an open connection to the dining area. The lower countertop dividing the kitchen and the dining area gives the residents the opportunity to help the staff in the kitchen even if they are in a wheelchair or too weak to stand in a kitchen. This also opens up for natural conversations whilst preparing the food.

Having two dining tables enables more intimate conversations but there is space enough to put them together if wanted. The dining room also connects to a big balcony where residents can have snacks or meals during the warmer months.

The winter garden

From the library you can access the winter garden, which is an open indoor/outdoor space across the three stories. Here you can enjoy the feeling of being almost outside even during the coldest months of the year.





Interior concept

The interior is designed to give a homey feeling, by paying close attention to scale, materials and wayfinding. The light wood signals warmth and the slats that are dividing the spaces create a balance between openness and intimacy while also being an interior detail.

The cement-bonded wood wool ceiling has sound absorbing properties while also providing effective fire protection. This helps to keep the volume down, since loud noises can be overstimulating for people with dementia.

Between the apartment entrances the walls toward the corridor are covered in wooden slats that are mirroring the exterior facade. This creates a feeling of being outside and adding to the notion of having your own home by giving the illusion that every apartment is like a row house. The exterior corridor wall also has the wooden slats but only up to waist height, thereby creating a railing that residents can hold on to if needed. The window sills in the corridor are low, so that every window sill functions as seating for those in need of a rest.



The lobby

The main entrance leads you directly to the reception, where you are greeted by the staff. From here you reach the elevators, the main staircase as well as both courtyards and the orchard that is shared with the preschool. This is an inviting place where you can sit down to look at the people coming and going or to wait for transportation services.



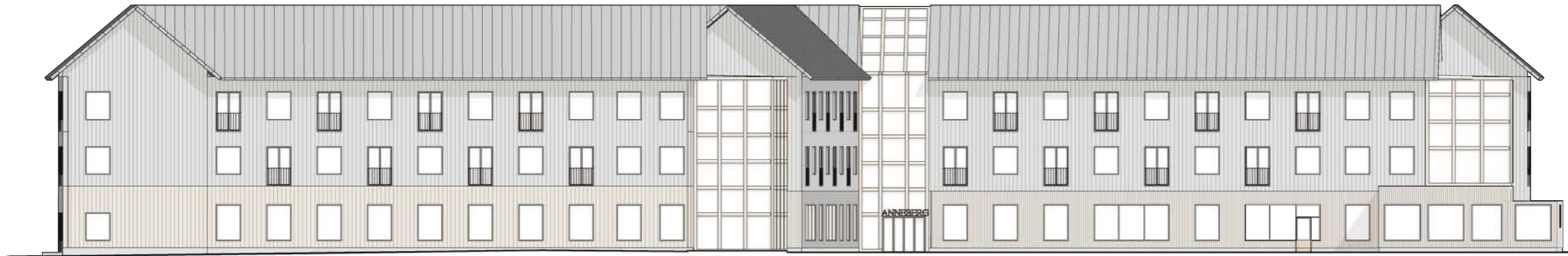
The office

The areas for the administrative work is located in the staff wing on the ground floor. Here you find the offices for the managers as well as an open office space for other personnel. This is also close to the conference area where meetings and presentations can take place.



The central hub

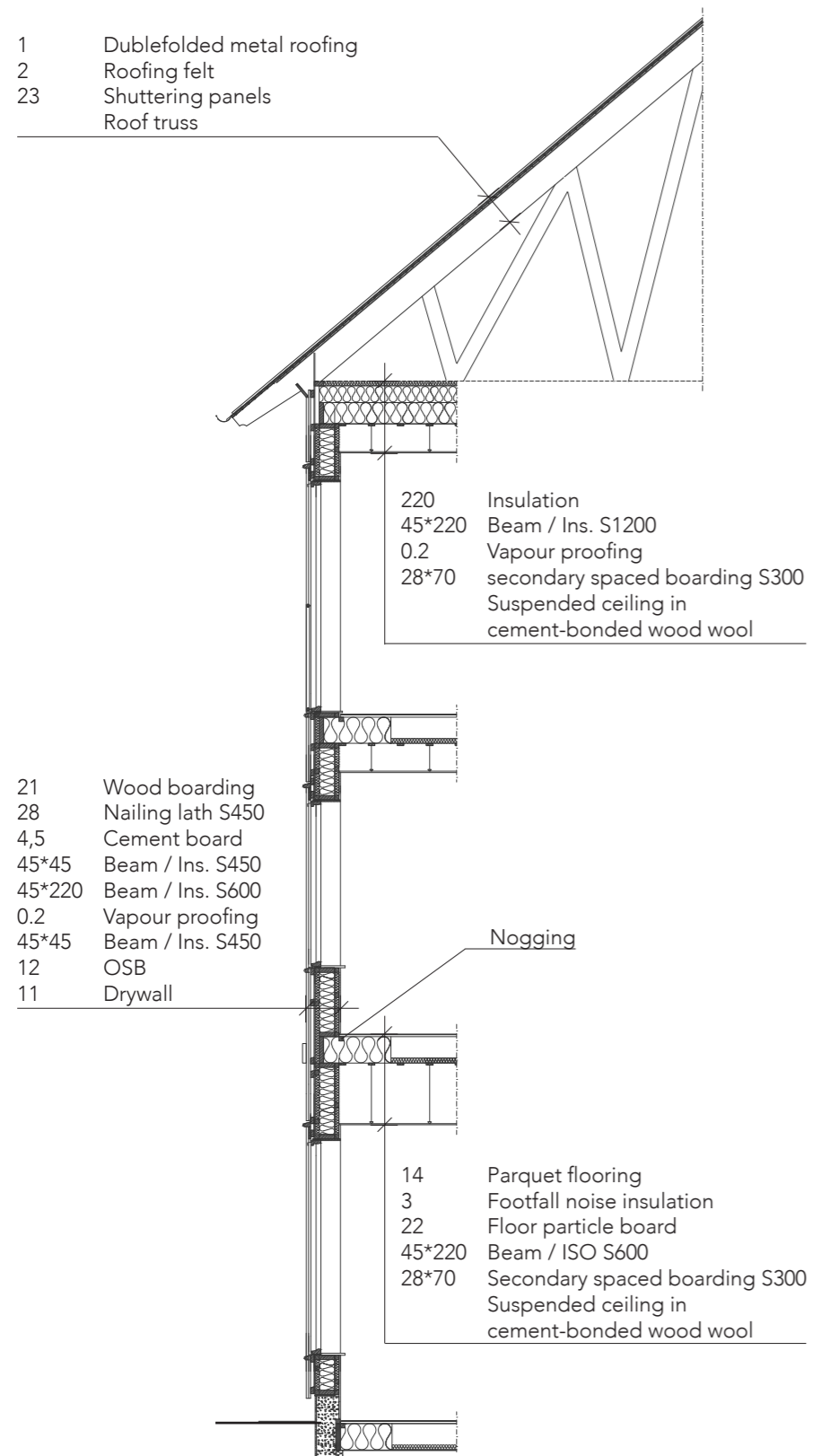
The central communication hub can be said to be the heart of the building. From this space you reach the main staircase, the elevators and all units directly. This space also works as a meeting place between the units, and this is also where the night staff have their workplace, with a good overview of all units on that floor.



West, South & North facades 1:300

The exterior is a play with different textures and varying ratios of wood and glass. The public facilities are articulated by the distinct slatted raw wood facade, while the facade of the apartments is more restrained in a grey wood.

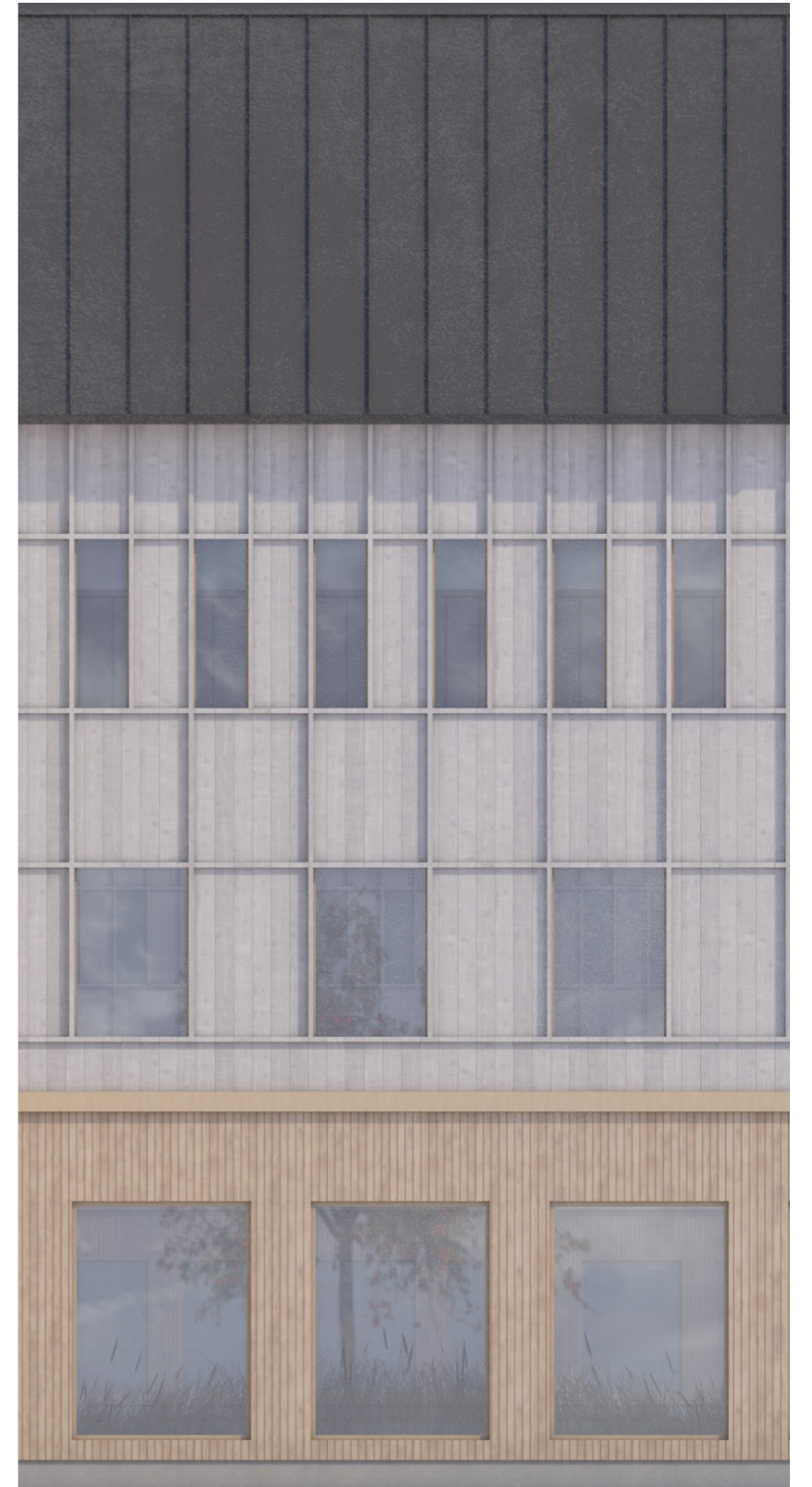




Principle section 1:70

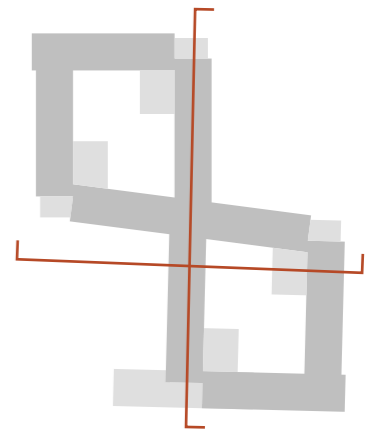
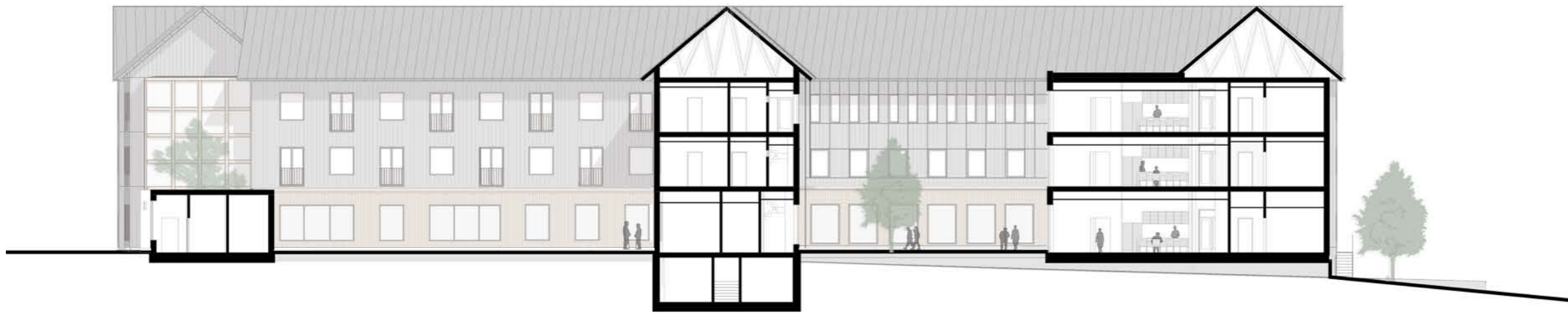


Exterior facade 1:70



Courtyard facade 1:70





Sections 1:300



Illustration plan 1:500



Landscape concept

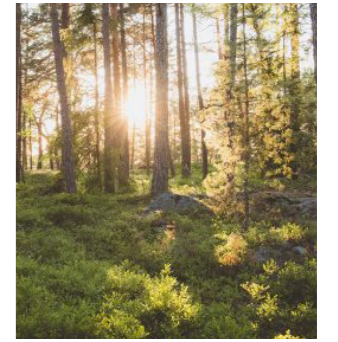
The outdoor spaces are designed to be different in typology and level of activity. By using species from the local flora the gardens attract local fauna, and together these stimulate the senses and evoke recognition in the residents. The two inner courtyards are themed "the meadow" and "the forest", paying homage to the local nature typology. A natural roughness resembling wilderness allows the plants to take their place on the site. The sensory gardens pay close attention to dementia symptoms such as perception and actionability.



The plaza



The meadow

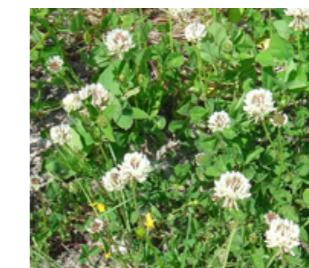


The forest

The facility divides the exterior area into different rooms. These spaces are designed with the physical abilities of the residents in mind. The north courtyard provides a bright walkable area, while the south courtyard is designed for a more quiet and forest-like feeling. The zone between the preschool and the care facility holds an orchard, which allows children and residents to take part in farming activities together.



Japanese knot weed



Shamrock



Red clover



Meadow vetchling



Feather grass



Common starwort



ANNEBERG