



LIFE GATEWAY JÖNKÖPING

EMELIE JOELSSON, ZHAO WU, XUE HAN

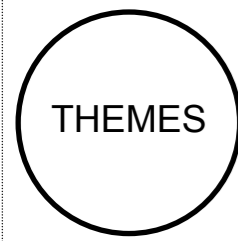
The processing of our studio starts from research. The 4 themes of reading and lectures in the beginning help us to understand more specific about what is happening in the healthcare system.

After theme 1 and theme 2 which are about nowadays healthcare and future healthcare, we reflected some valuable points which might be helpful to develop further into design.

HEALTHCARE IN 15 YEARS

As the client is asking for a "hospital" in 15 years, So the visions we have are concluded as follows:

1. **Patient centered**-- Patient will settle down in any place of the building and caregivers will come to them like **nomads**. Services or equipments will also be delivered to them by **artificial intelligence**;
2. More **diversed meeting** should be supported by the whole building structure for more **co-design process** between informal and formal areas;
3. **Dehospitalization** is happening to people well being. The more socialized structure is asking for more open, mixed and multifunctional functional layout.



Standardized Room: Includes labels like 'STANDARDIZED ROOMS', 'MODULAR SYSTEMS', 'CONSULTATION ROOMS', 'COACH CONCEPT', 'PATIENTS PRIVACY', 'NURSES SUPERVISION', 'FLEXIBILITY', and 'SINGLE PATIENT ROOMS'.

Information Support: Includes labels like 'DATA', 'APP', 'PHONE', 'TABLET', 'MODULAR SYSTEMS', 'CONSULTATION ROOMS', 'COACH CONCEPT', and 'SINGLE PATIENT ROOMS'.

Patient Centered: Includes labels like 'TREATMENT', 'DIAGNOSIS', 'PATIENT CENTRED', 'CONSULTATION', 'MEDICAL STAFF', 'CARE', 'COACH CONCEPT', 'CO-PRODUCTIVE', 'SINGLE PATIENT ROOMS', and 'THE PATIENT IS THE OWNER OF THE SPACE'.

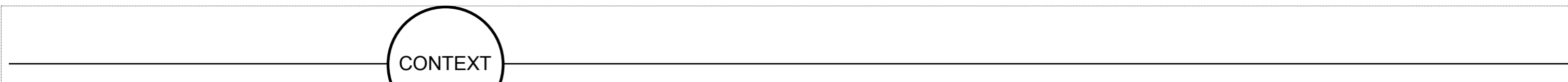
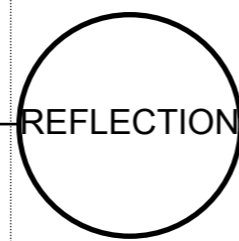
Working station: Includes labels like 'WORKING STATIONS', 'Knowledge center', 'Accessible for all kinds of activities', 'Ergonomic', 'Standardized', 'Diversity of space', 'Sharing Knowledge', and 'Offers a broad range of desks'.

Information Flow: Includes labels like 'Social Terminal', 'Activity Area', 'Working', 'Learning', 'Meeting', 'Sharing', 'Cooking', 'Physiotherapy', 'Resting', and 'Passage way'.

Co-Design: Formal meet Informal: Includes labels like 'Co-design', 'Formal meet Informal', 'Activity Area', 'Working', 'Learning', 'Meeting', 'Sharing', 'Cooking', 'Physiotherapy', 'Resting', and 'Passage way'.

Diversed Corridor space: Includes labels like 'CORRIDOR', 'Activity Area', 'Working', 'Learning', 'Meeting', 'Sharing', 'Cooking', 'Physiotherapy', 'Resting', and 'Passage way'.

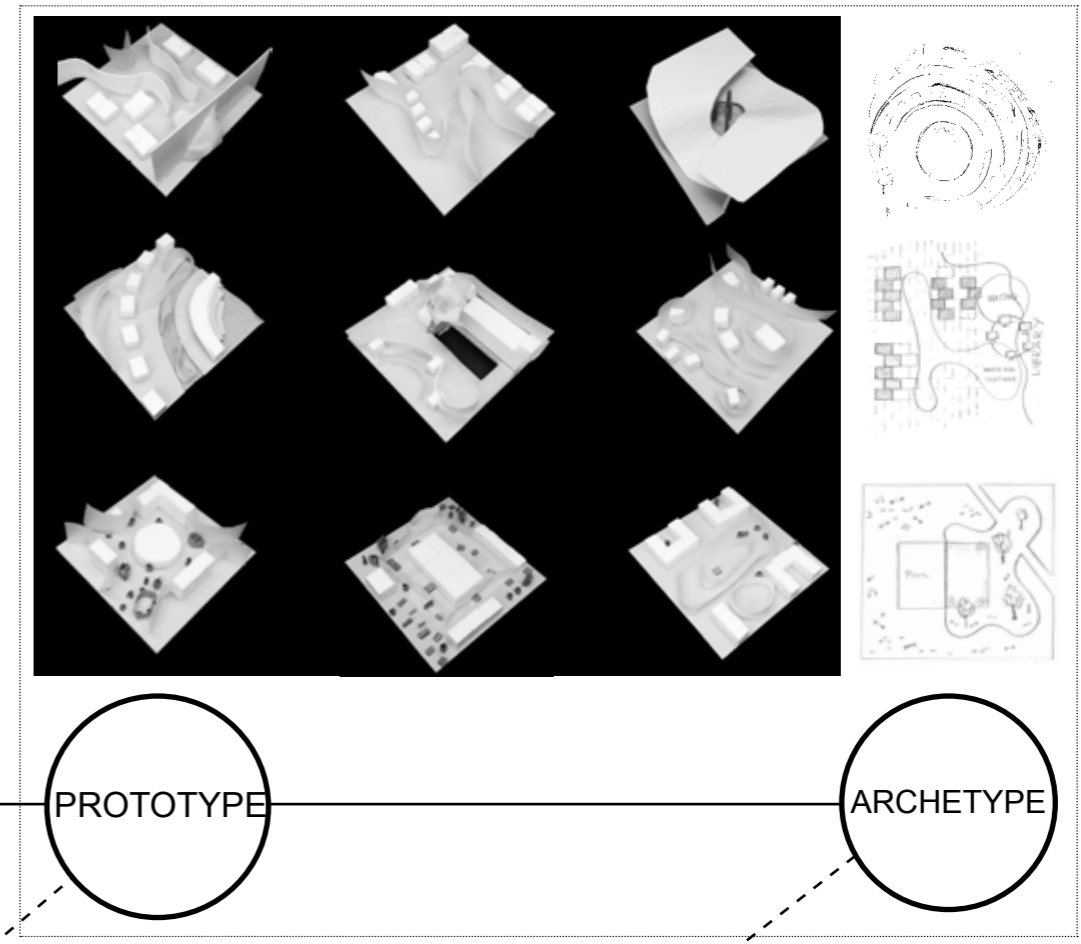
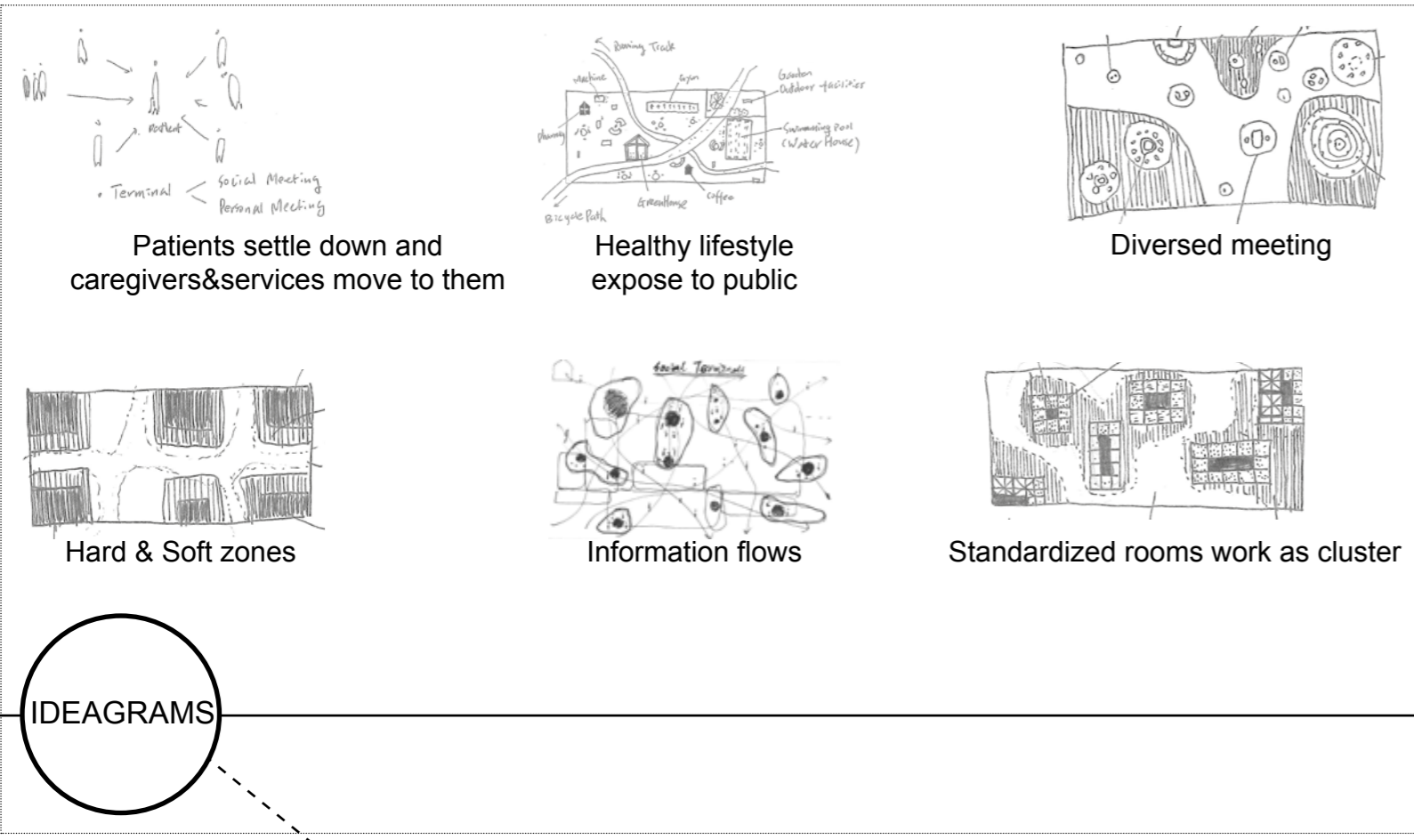
Learning and Changing: Includes labels like 'Opinion Health', 'Appetite', 'Behavior', 'Healthy diet', 'Physical exercise', 'Data sharing', 'Stressless', 'Calm', 'Positive', 'Innovation Design', 'Pharmacy', 'Gym', 'Outdoor rooms', and 'Innovation Design'.



RYHOV HOSPITAL INTRODUCTION

Ryhov Hospital is the largest hospital in Jönköping, which is located in the eastern part. The hospital has more than 20 clinics receptions and 500 beds spread across 34 departments and a total of 3300 employees. In 2014, it received over 400,000 patient visits. Ryhov Hospital wants to be a role model in the Swedish health care and are constantly working to improve conditions for patients and families. As to education, a part of everyday life in the hospital, students from nearly 20 professional categories training makes their practice here. Many employees do research in their specialties, and more than 80 have PhDs. Hospital is also equipped with a great laboratory of clinical chemistry, microbiology and clinical pathology and cytology. The last few years have Ryhov Hospital topped the national comparisons of medical outcomes and patient satisfaction.





NEEDS

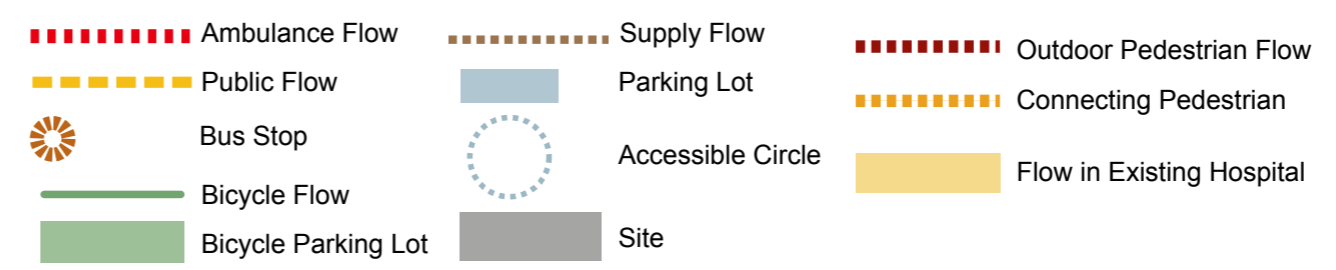
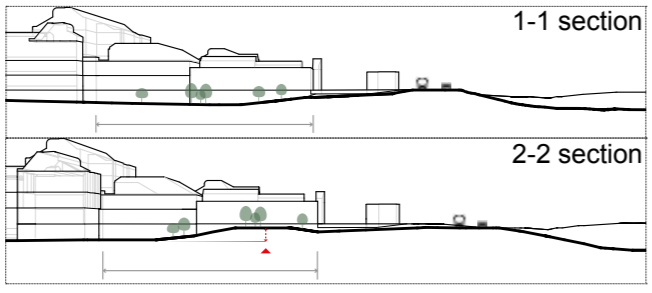
Functions

Orders

CONCEPT

SITE SELECTION

SITE DESIGN



We choose site 2 to develop our project after site investigation and analysis.

- Benefits of Site 2:
1. High accessibility to public transportation over all;
 2. Almost surrounded by nature;
 3. Natural terrace for flow divisions.

NEEDS

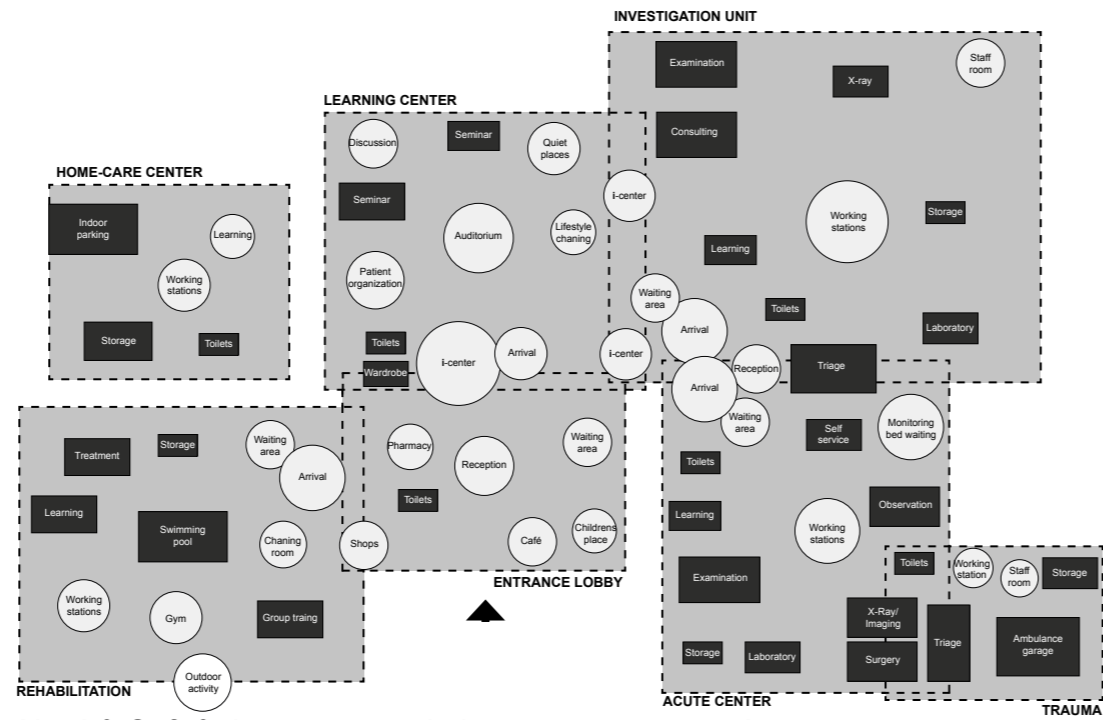
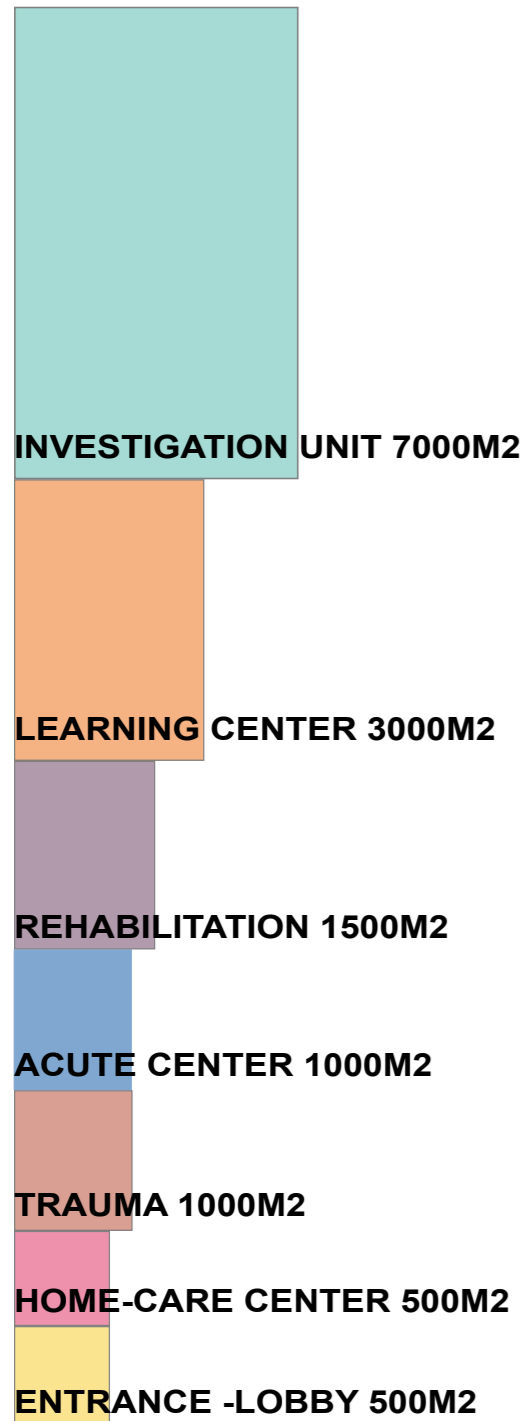
ORDERS

COMMISSION READING

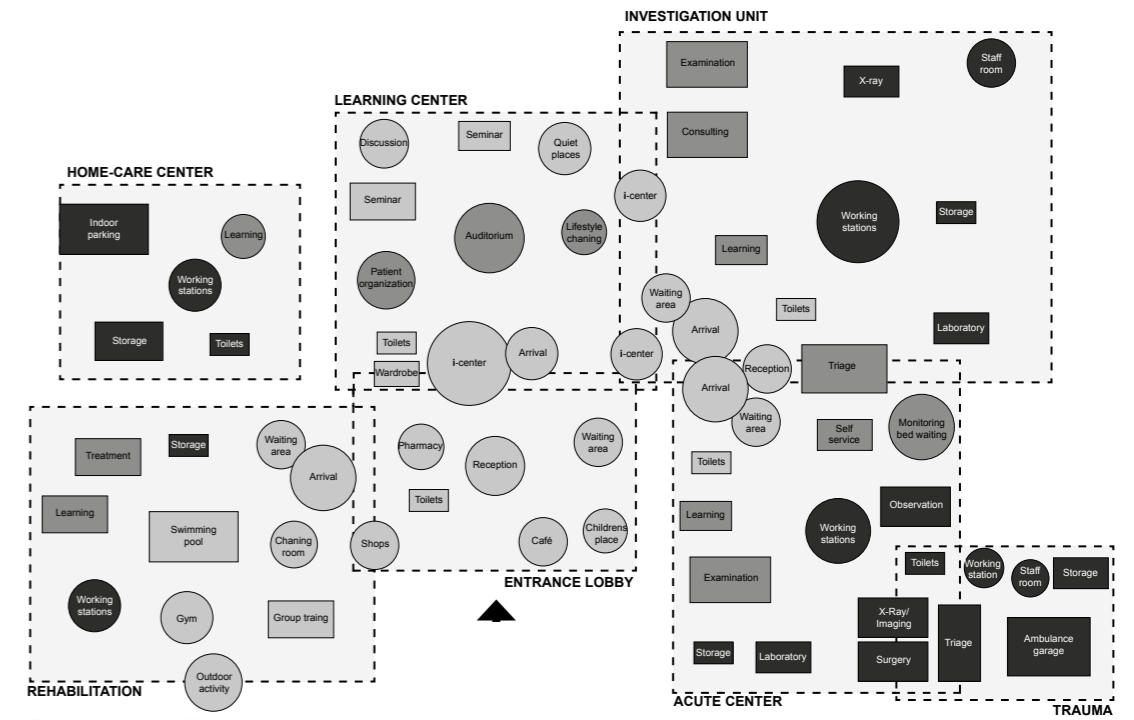
- The keywords are:
- Cooperation
 - Co-design
 - Connection
 - Coherence
 - Communication

TRANSLATION

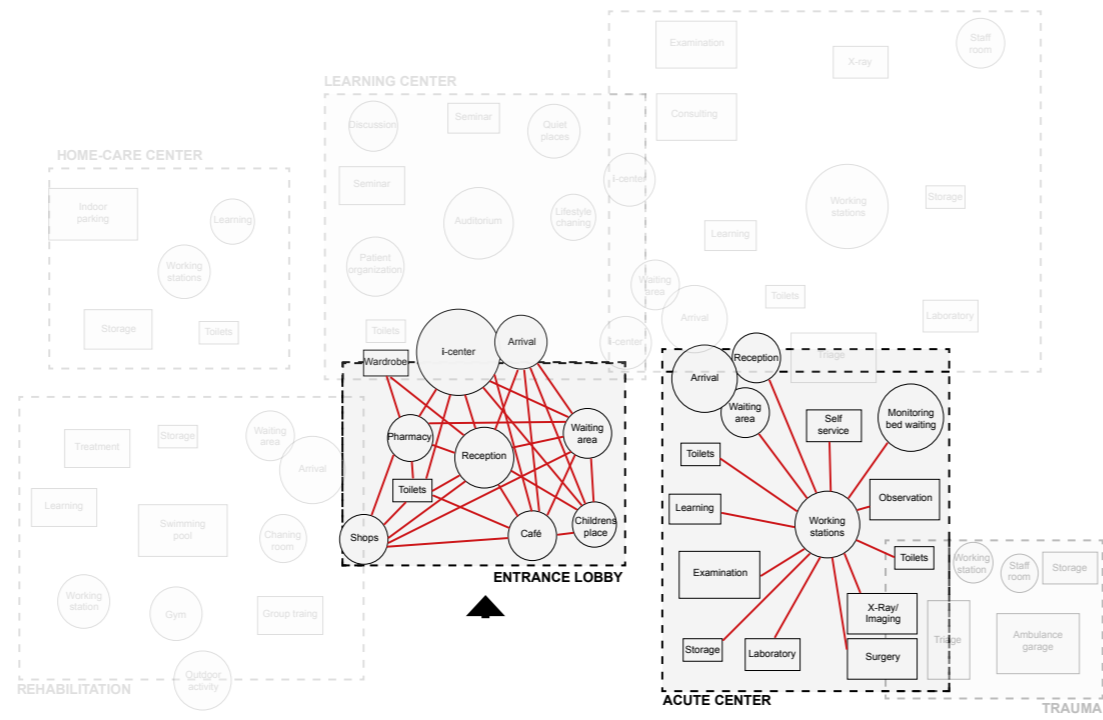
- Step1: We layout the required functions and supplementary ones in a big paper;
 Step2: We try to find out the spatial relationship between different units and functions by pattern design;
 Step3: We classified all the functions into 2 catalogues: Hard and soft. By inserting 2 different systems in the building, we hope to provide more diversified spaces for different social behaviors.



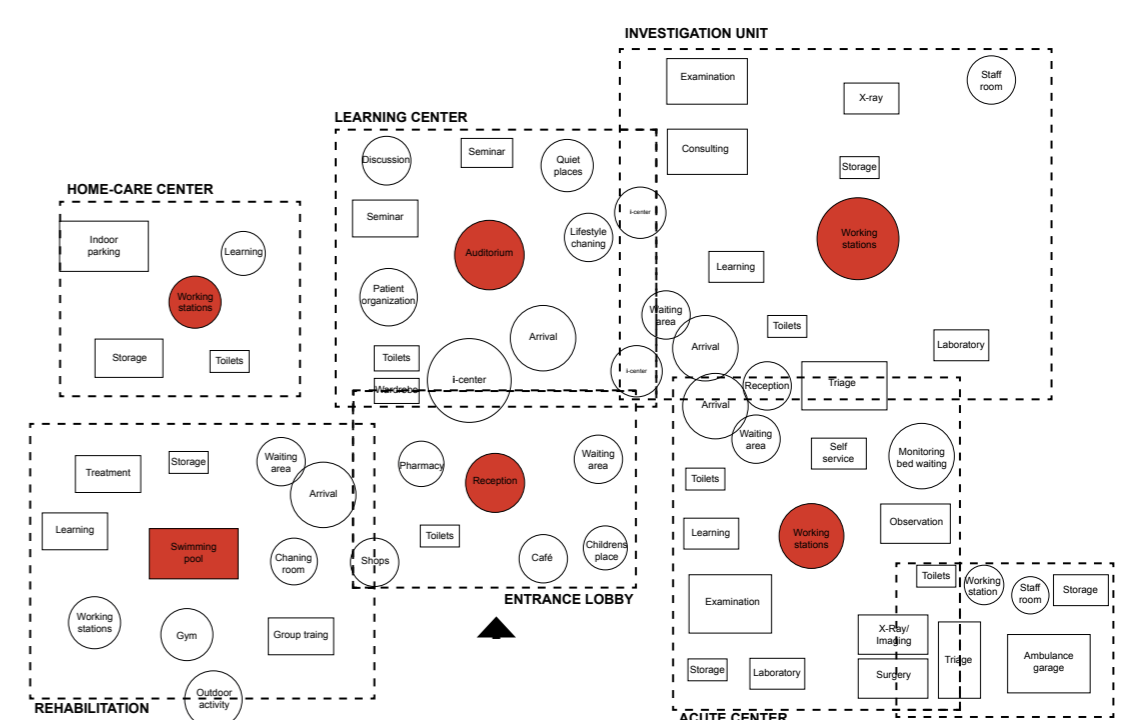
Hard & Soft & the grey zone in between as connection



Public and Private



Different flow comparasion



Organizational core for each unit

CONCEPT

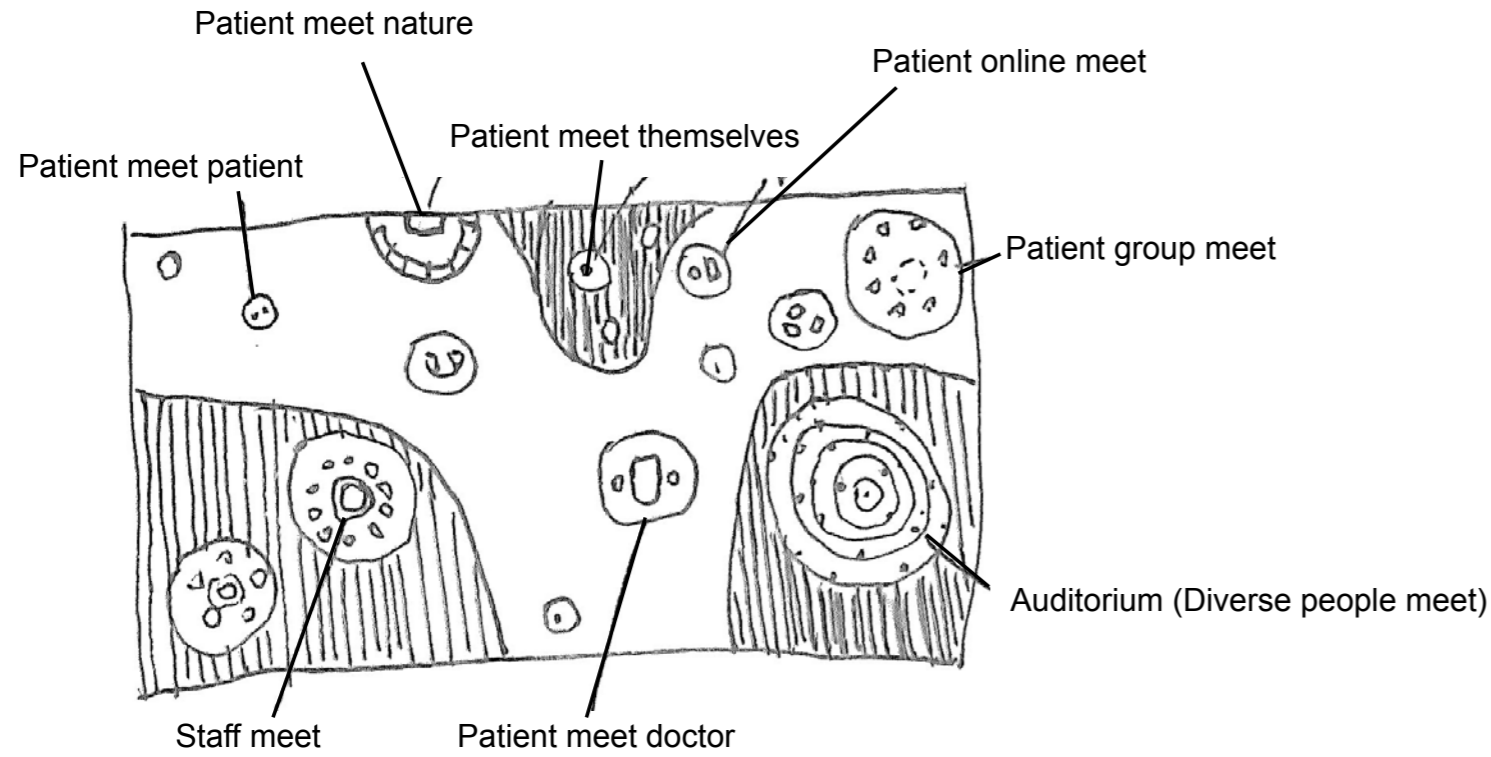
DIVERSED MEETING

BUILDING MEET CONTEXT

PEOPLE MEET BUILDING

PEOPLE MEET PEOPLE

HEALTHCARE MEET FUTURE



By providing or inserting a physical structure to fulfill diversified meetings is the 1st step to achieve cooperation among different stakeholders. we will zoom out to elaborate this concept in different layers and scales.

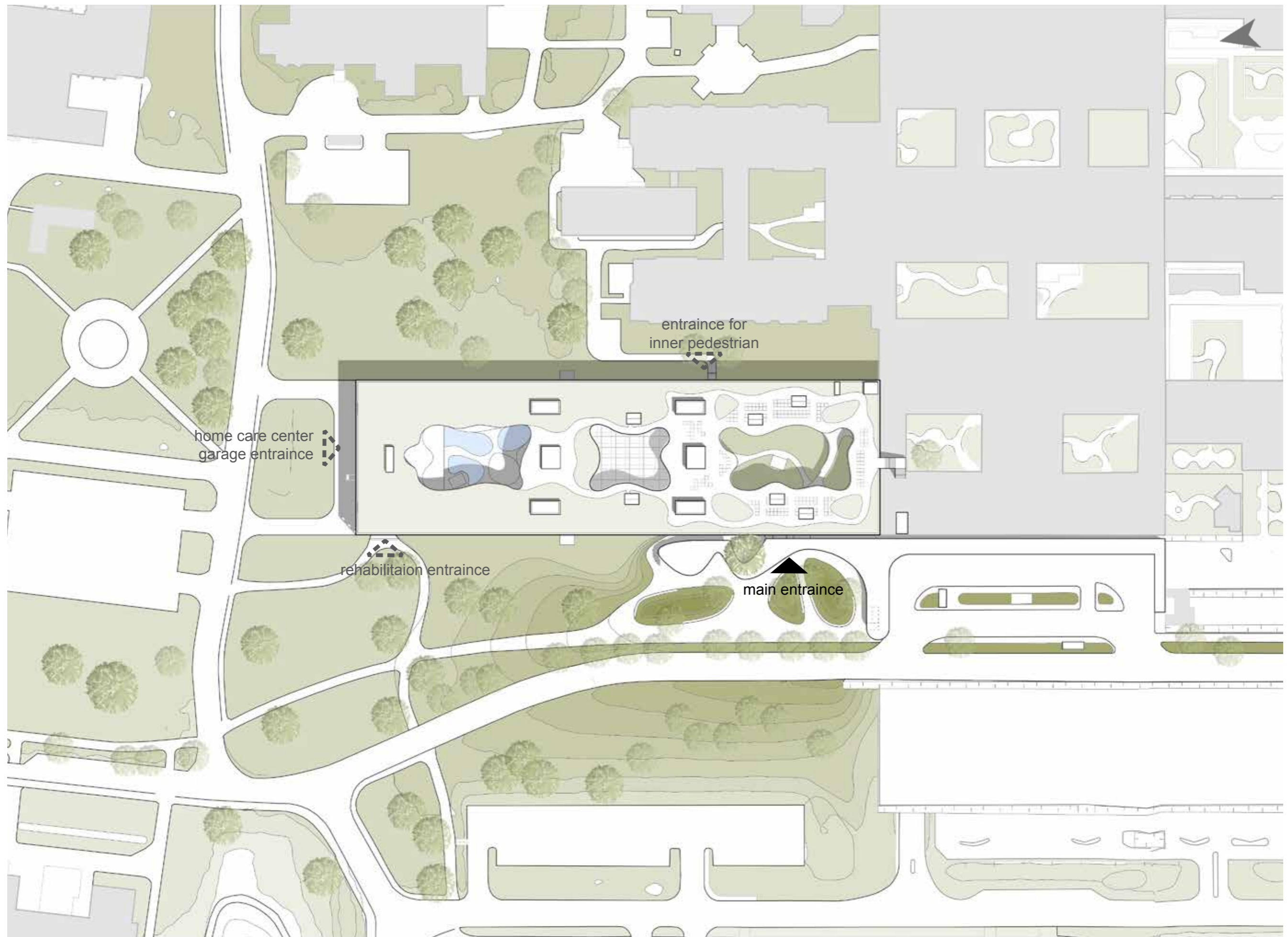


Diversed meeting in differen layers & scales

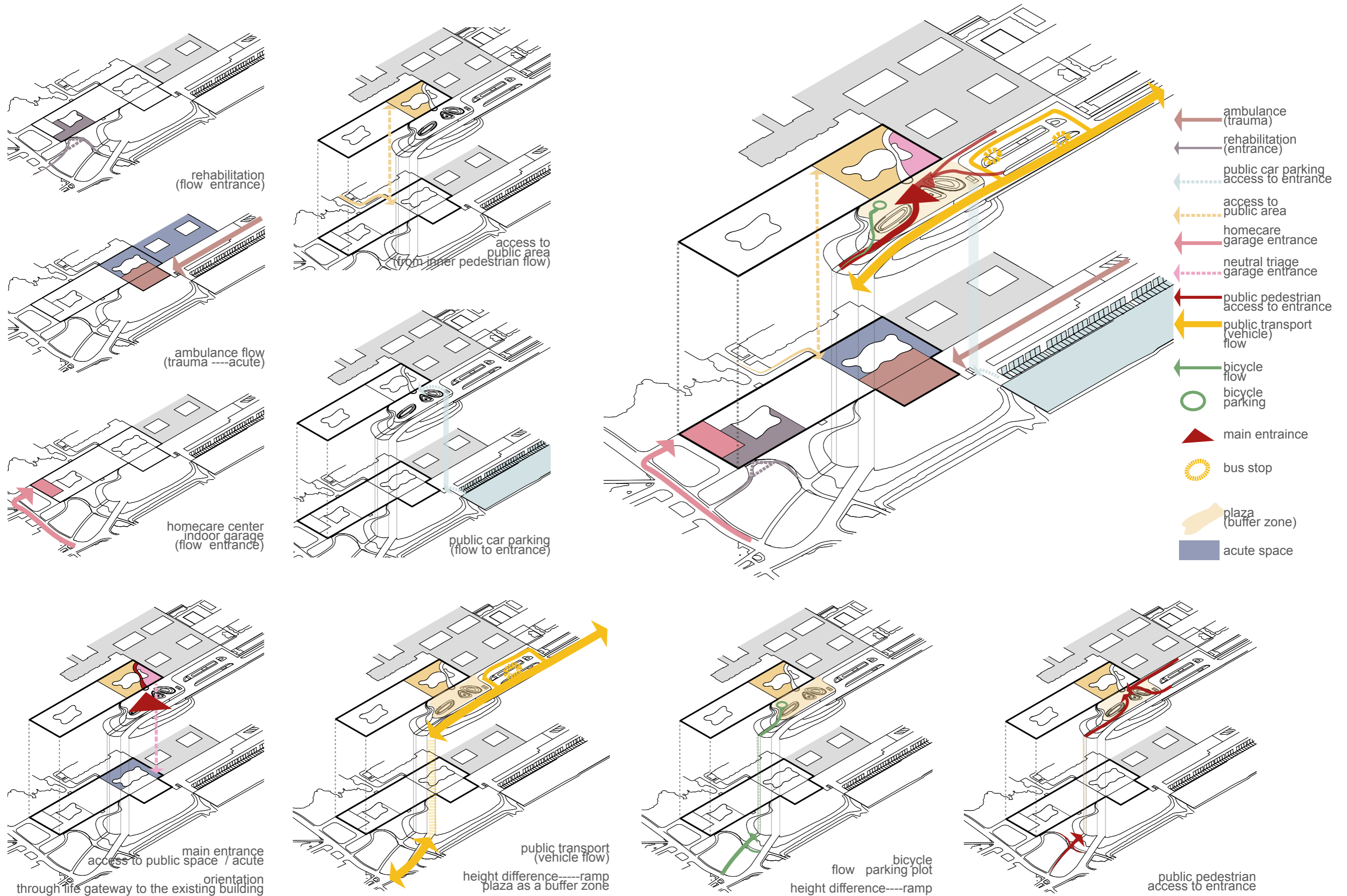
FURTHER EVOLUTION OF HARD&SOFT

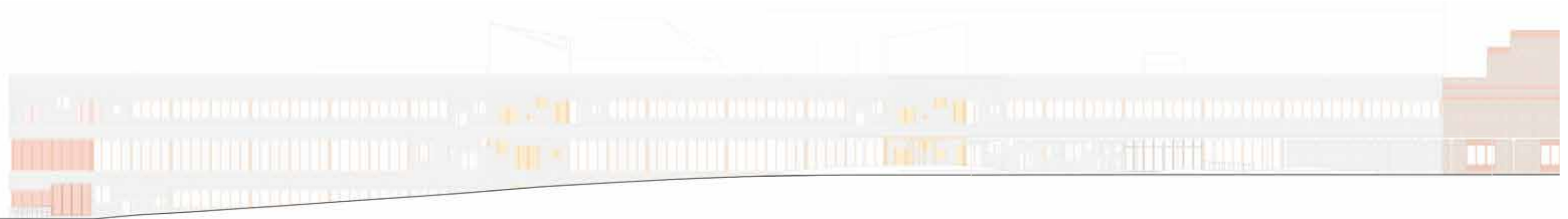
1. The hard standardized rooms work in a cluster and are located in the edge of the building to get more direct light and natural views;
2. The soft spaces and rooms are more spread out in the open space and around the yards to get in more diffused light and nature as well;
3. The grey open space in between works as connection;
4. The hard cluster and soft spaces communicate with each in a formalistic and functional way.





BUILDING MEET CONTEXT OUTER TRAFFIC FLOWS





WESTERN ELEVATION 1:400



ZOOMED-IN ELEVATION 1:200



MAIN ENTRANCE

OUTER FACADE MATERIAL

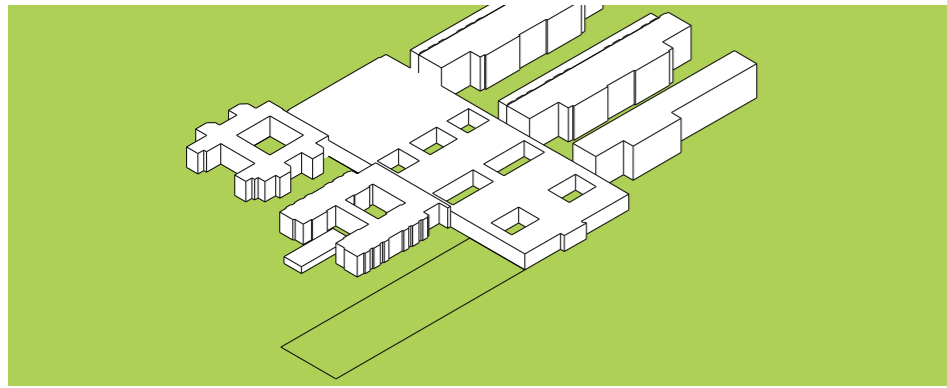
We use glass with a 3D brick pattern as the outer skin to talk to the existing building with red bricks. The inner skin is framed with wood to get a warm feeling when you touch it.

EXPERIENCE WITH THE BUILDING FACADE

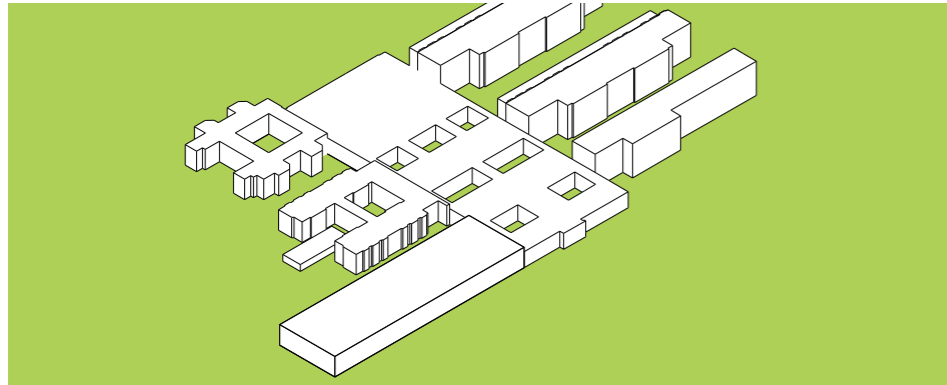
The first view you get about the building from far away is simple; when you get closer, you can see the exposed activities interior from the multilayers glass system to get a more active atmosphere of the building; when you come to the entrance, the organic shaped landscape furniture and architectural elements give you more clear orientation and welcome feeling.



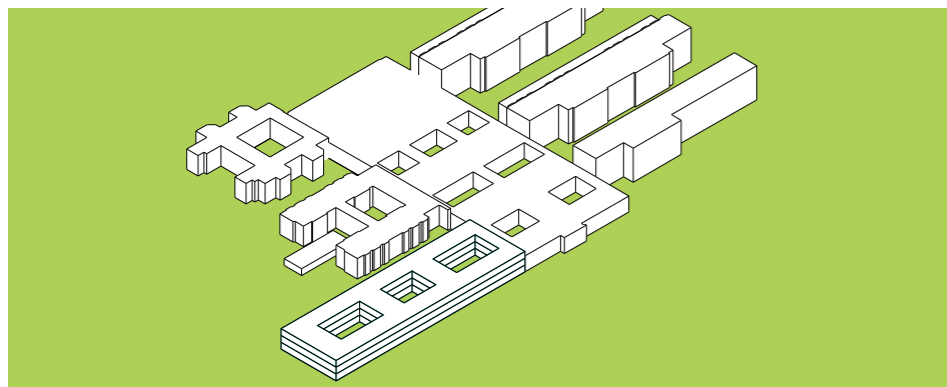
PEOPLE MEET BUILDING INNER EXPERIENCE



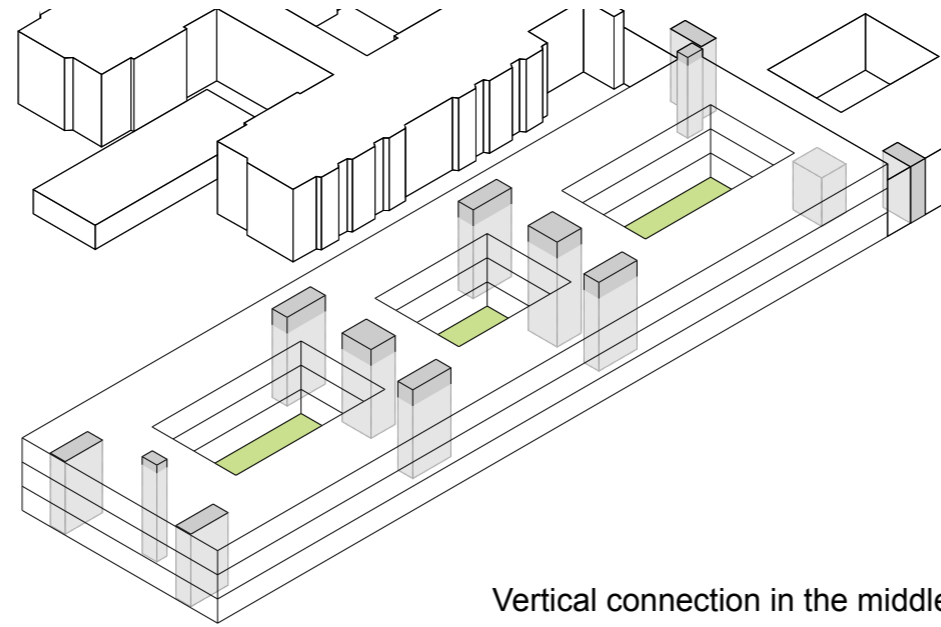
Site-open nature



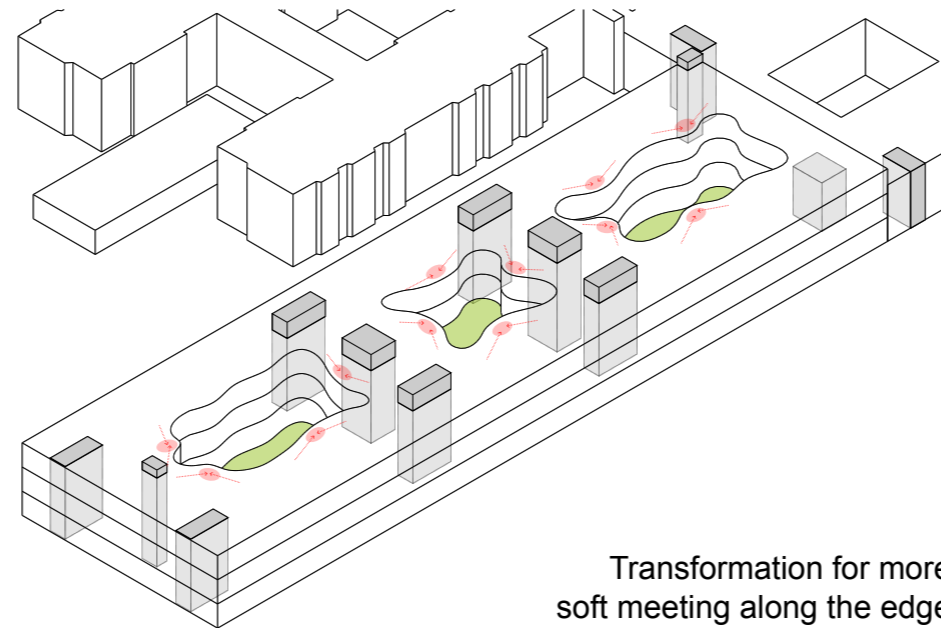
Box-simple building volume



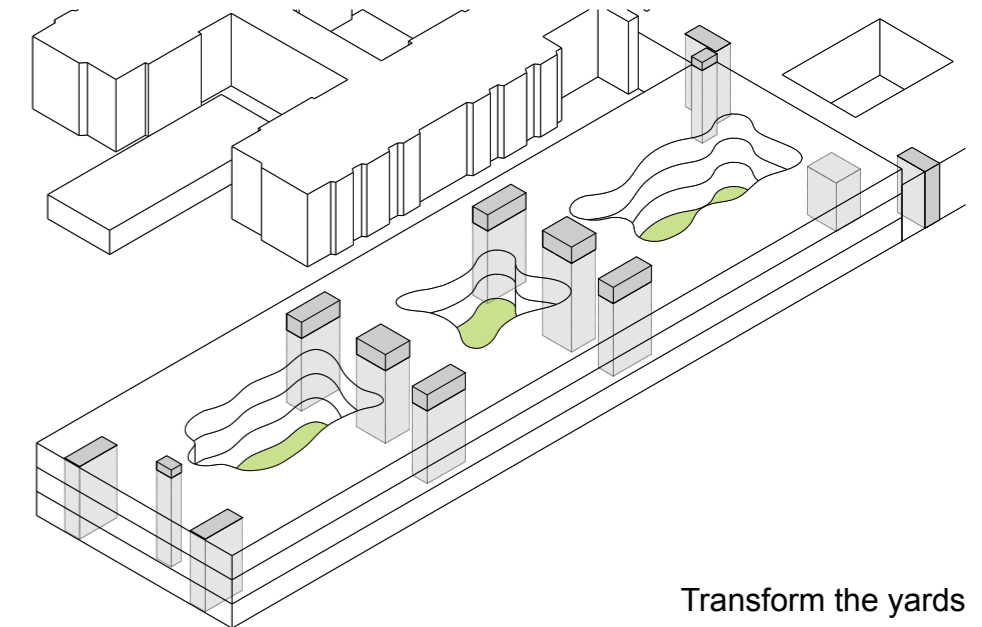
Inner yards to enclose intimate nature



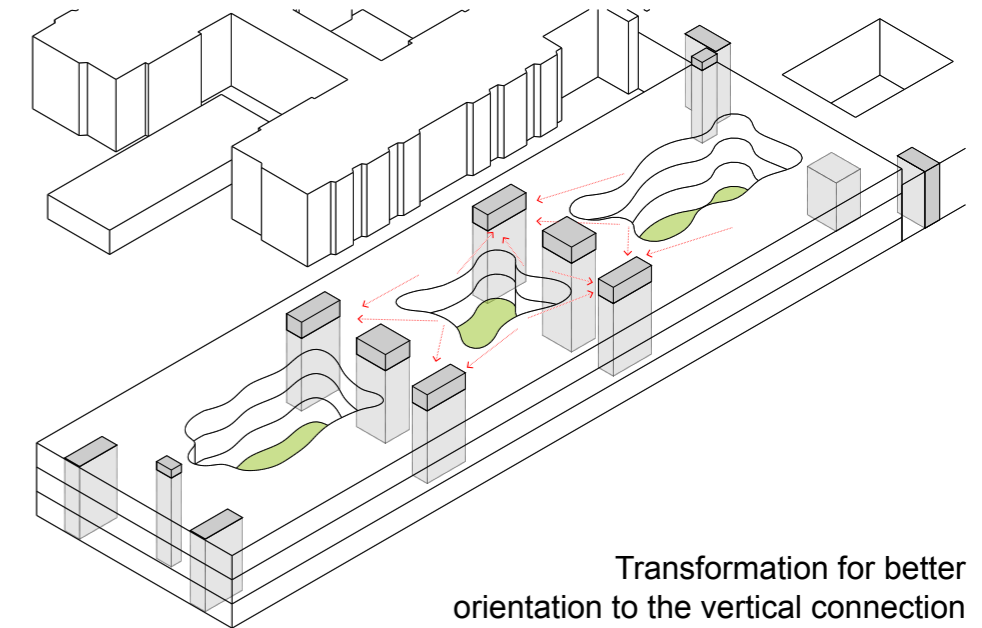
Vertical connection in the middle



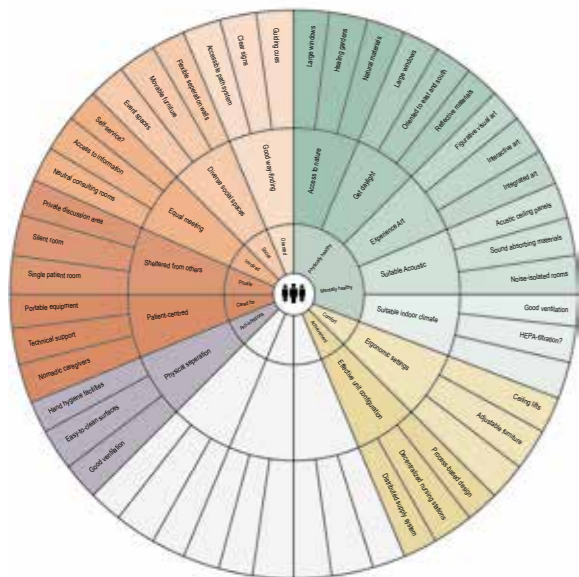
Transformation for more soft meeting along the edge



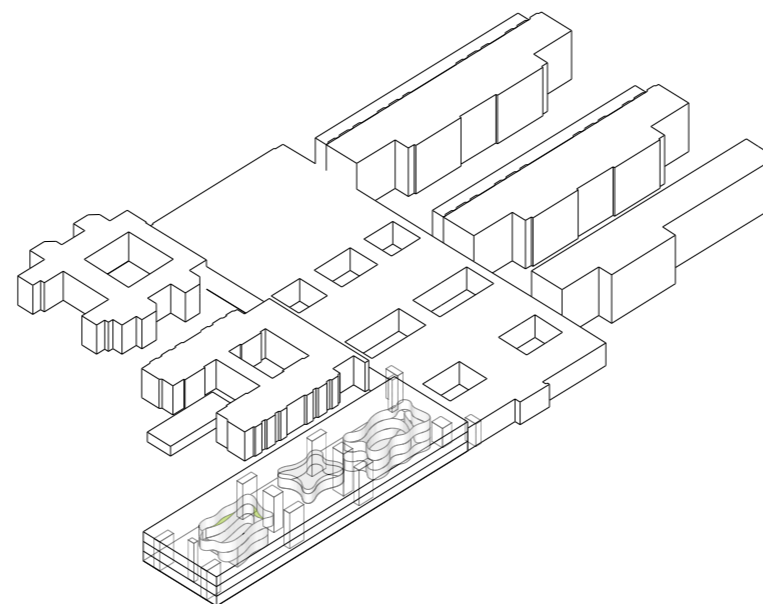
Transform the yards



Transformation for better orientation to the vertical connection



Theme 3 Evidence based design

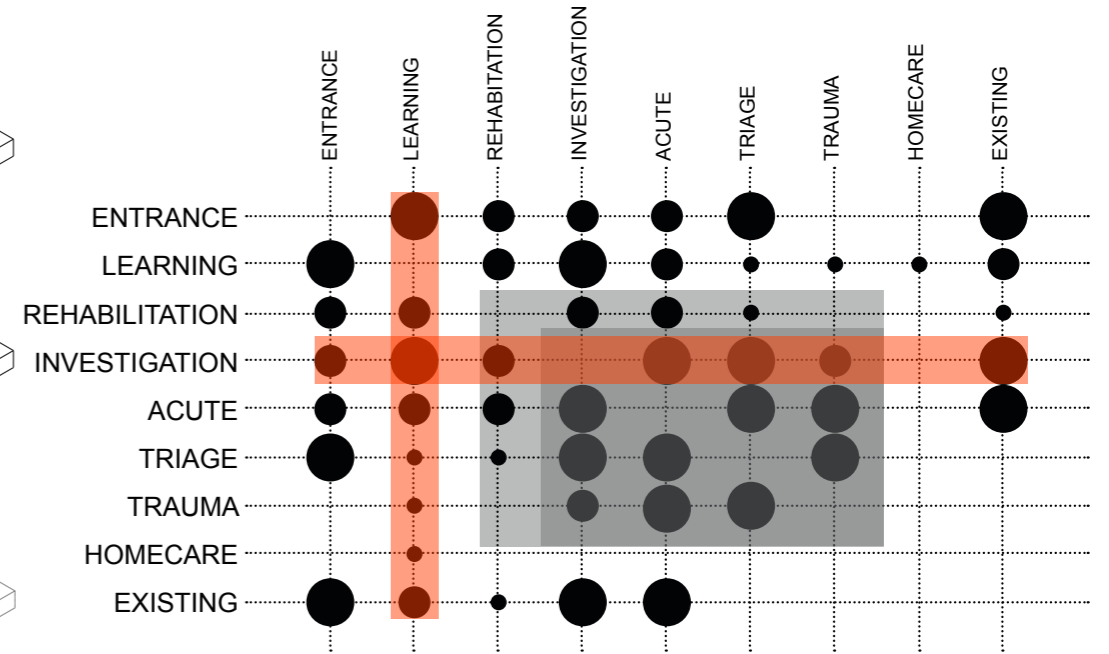
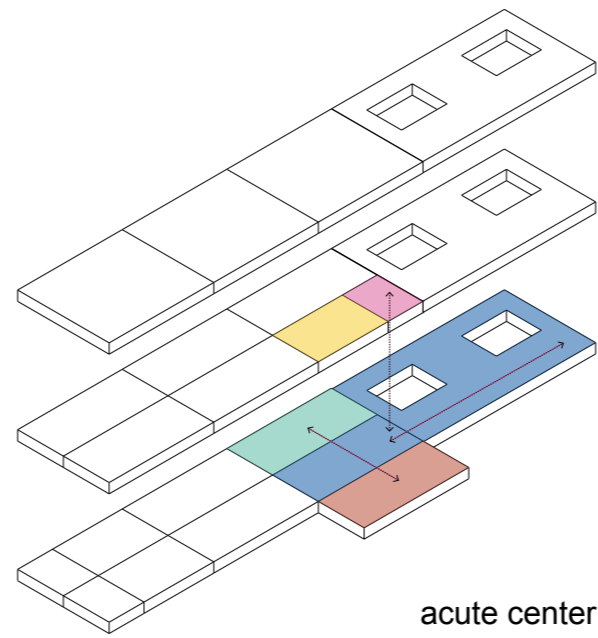
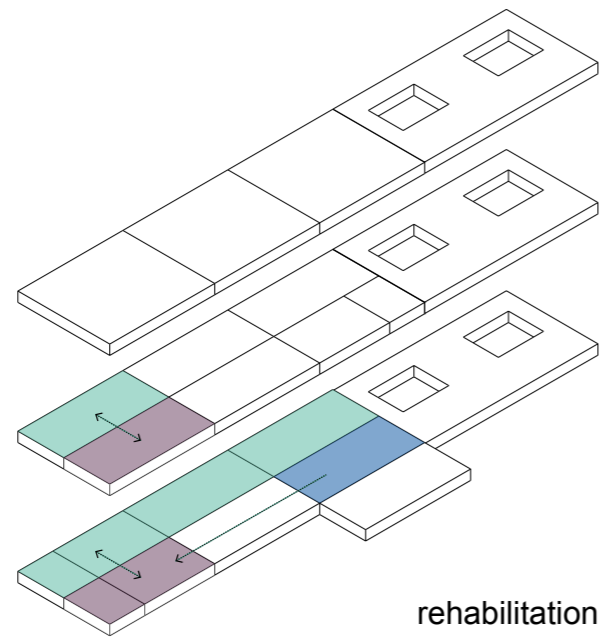
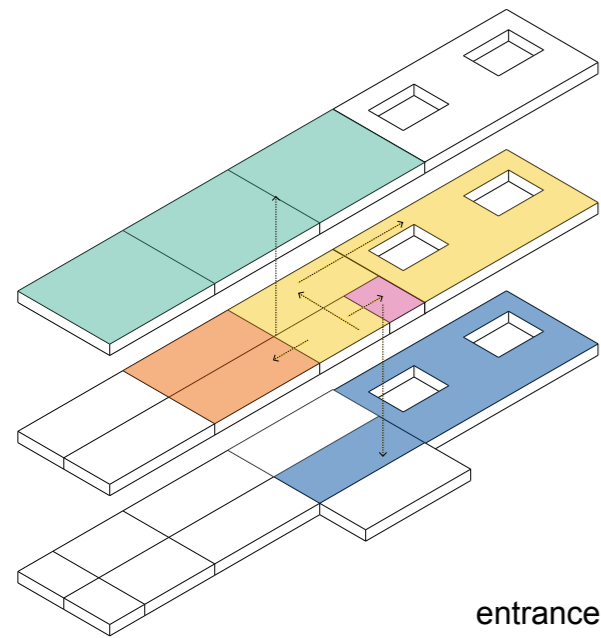
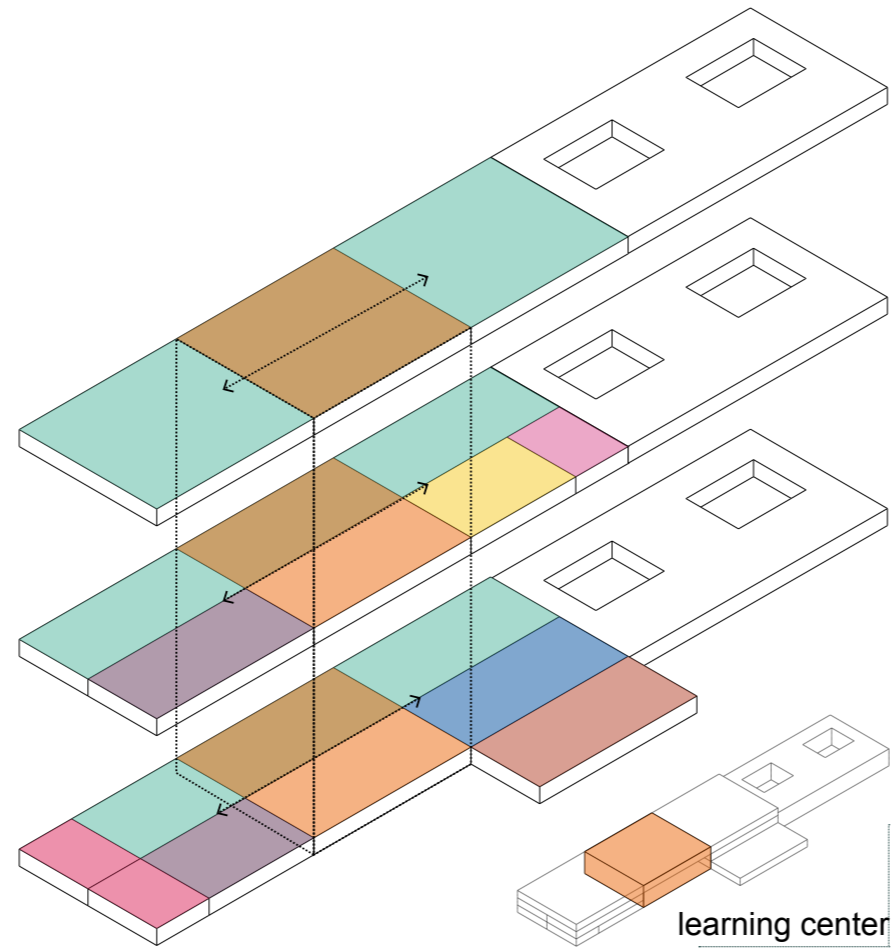
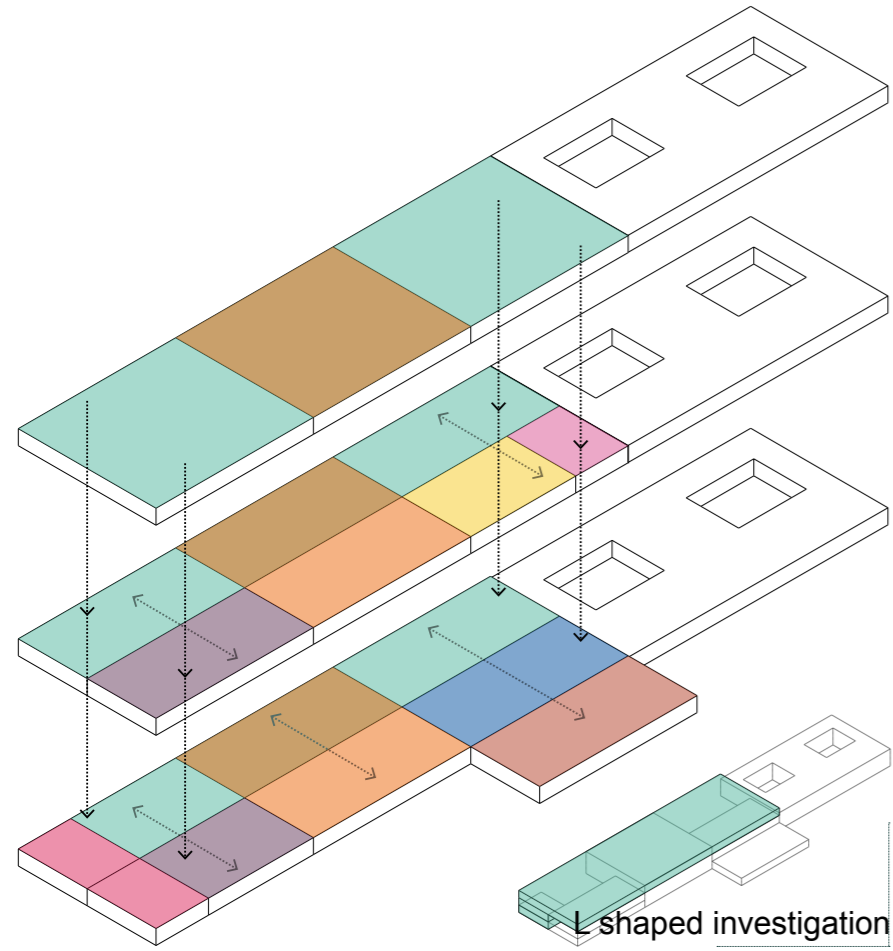


FORM MANIPULATION

With a starting point to bring in light and nature and create more intimate scale to people, we have all the shafts in the middle and transform the yards for better inner communication of space.

PEOPLE MEET PEOPLE

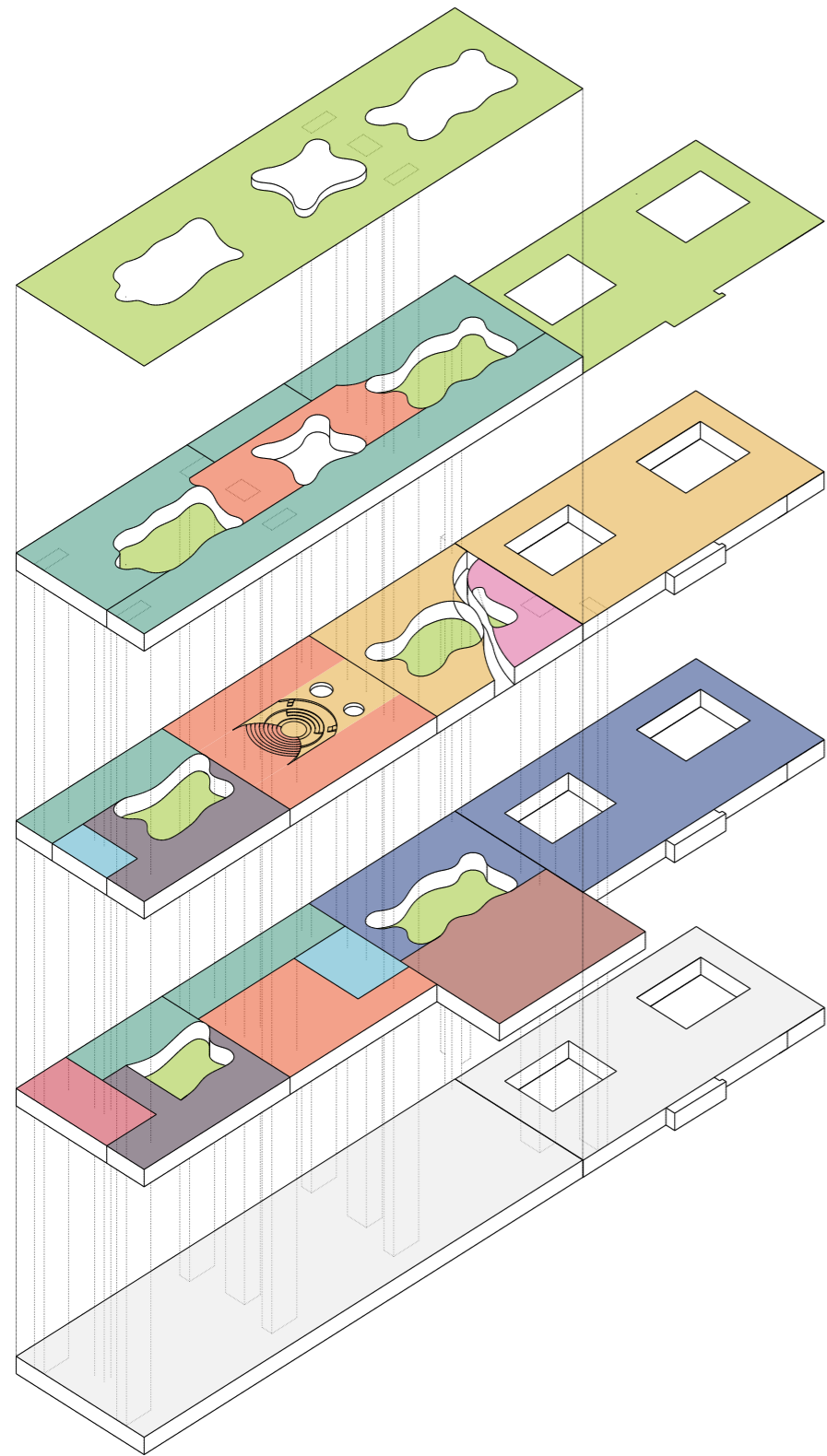
UNITS MEETING



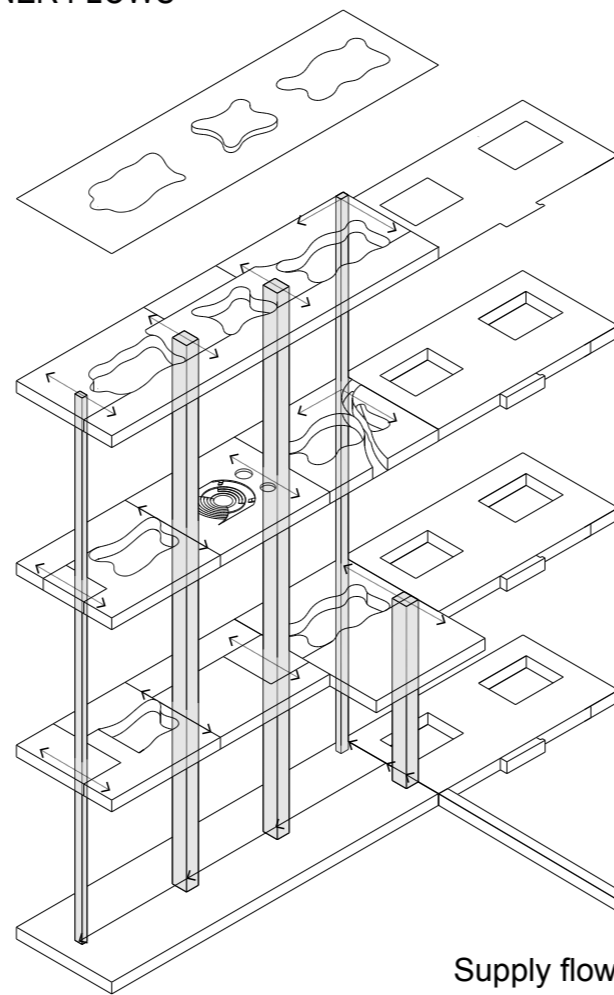
MATRIX OF UNIT MEETING

The meeting among different units decide most of the building structure . Different units have different levels of meeting or cooperation needs. The matrix above shows the meeting relationship in 3 levels. We find out the investigation and learning center need the most connection with other units. So we put learning center in the middle of the building and investigation in a L shaped volume to have horizontal connection to all the other units. and the investigation, acute , triage, trauma will have the most connection around a yard.

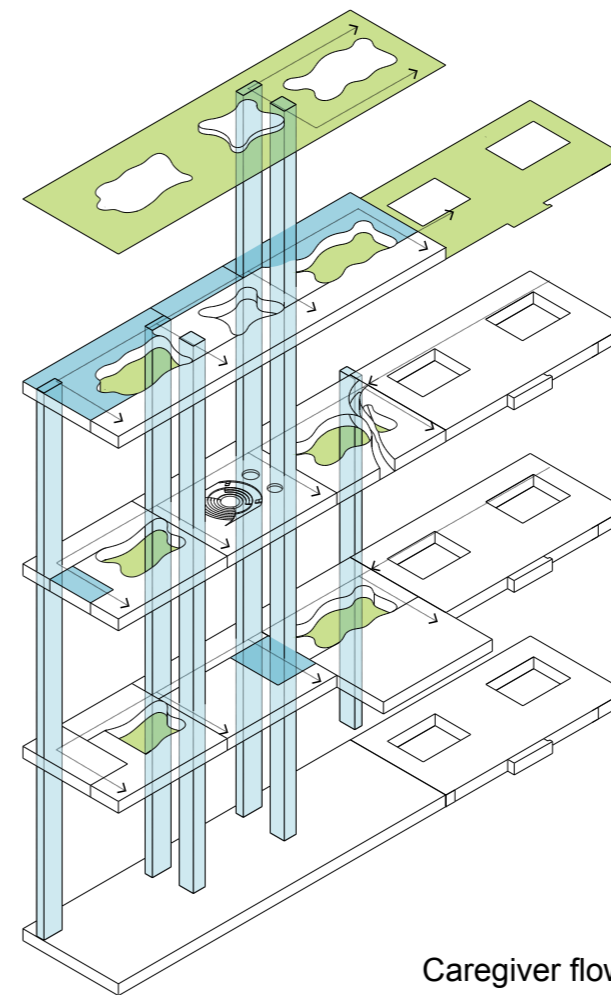
PEOPLE MEET PEOPLE FUNCTIONAL LAYOUT AND INNER FLOWS



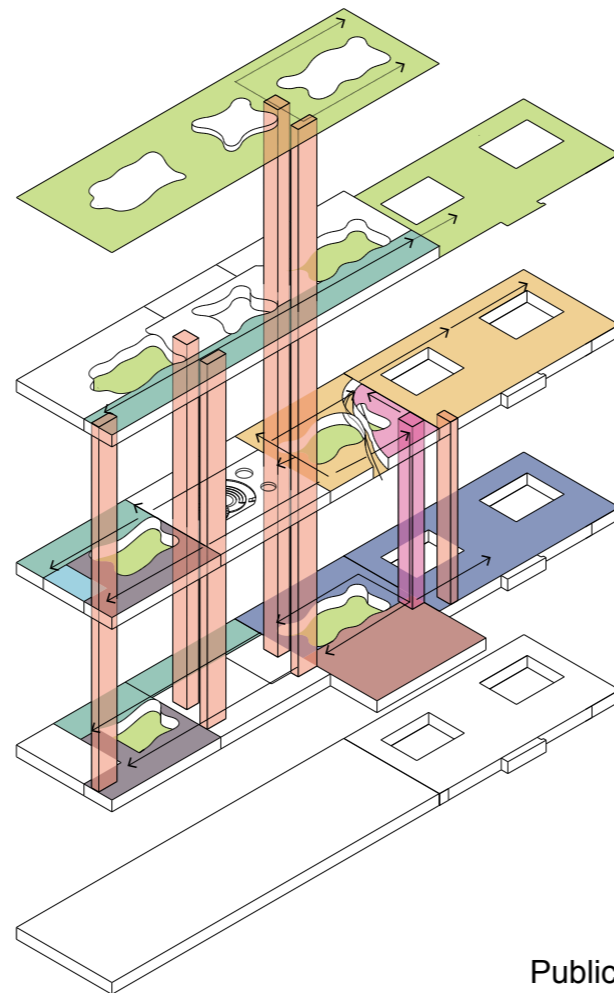
Functional layout



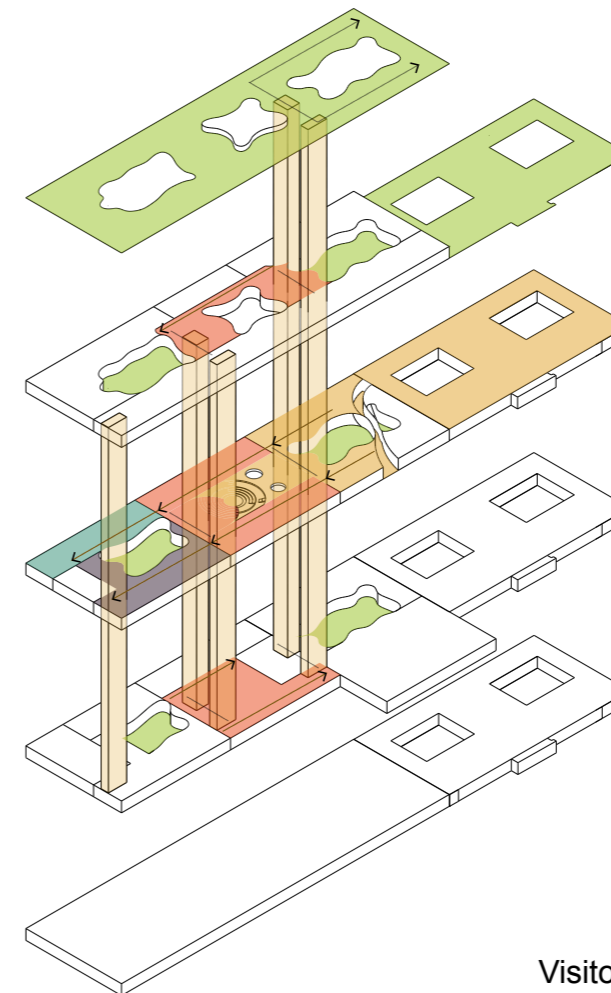
Supply flow



Caregiver flow



Public flow



Visitor flow

- Investigation
- Learning
- Rehabilitation
- Acute
- Trauma
- Homecare
- Entrance lobby
- Triage

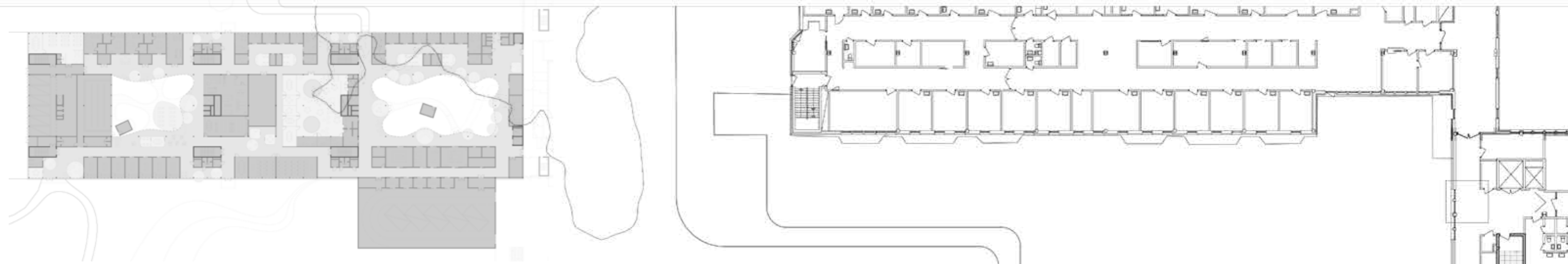
FLOWS

Supplies are from the 2nd floor and distributed to each floor mainly from the centralized good elevators.

Caregivers are mainly use the vertical connection on the backward and the staff zone are located in the center part to reach patients faster.

The public are mainly use the vertical connection on the foreward .

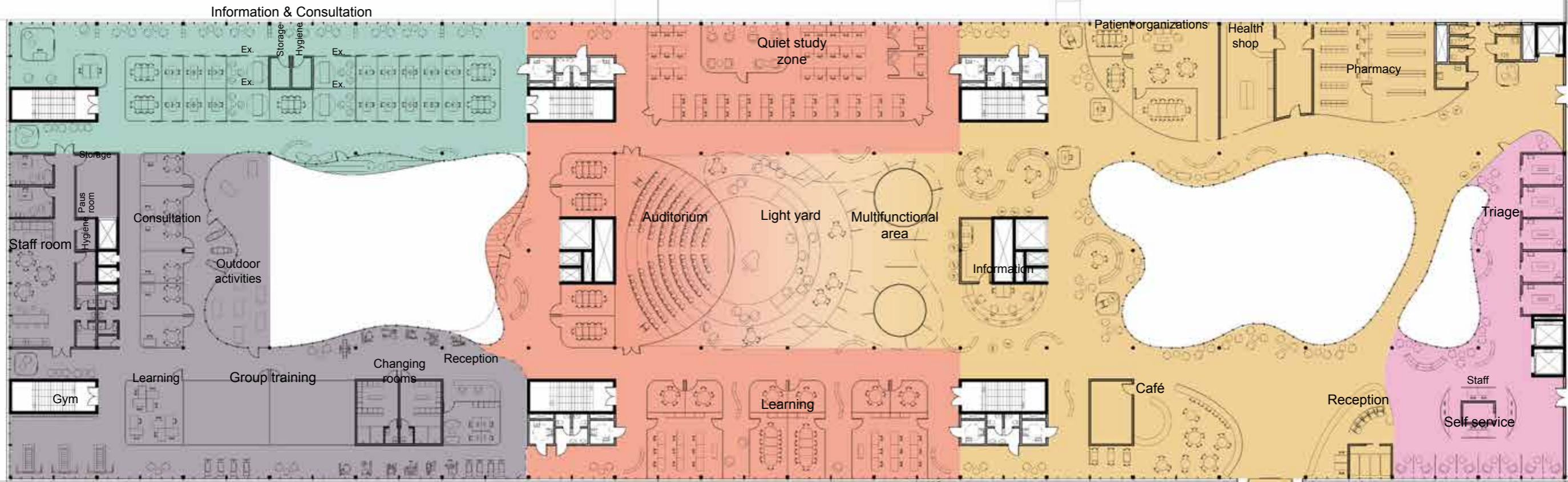
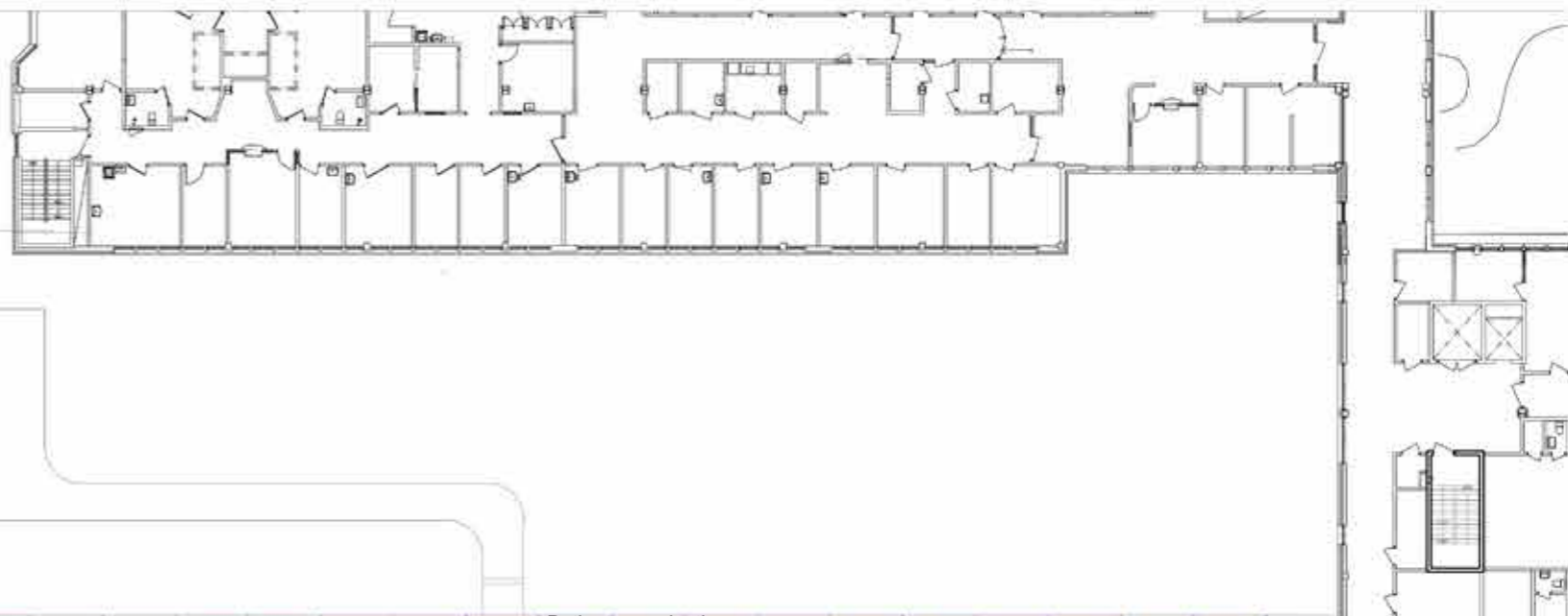
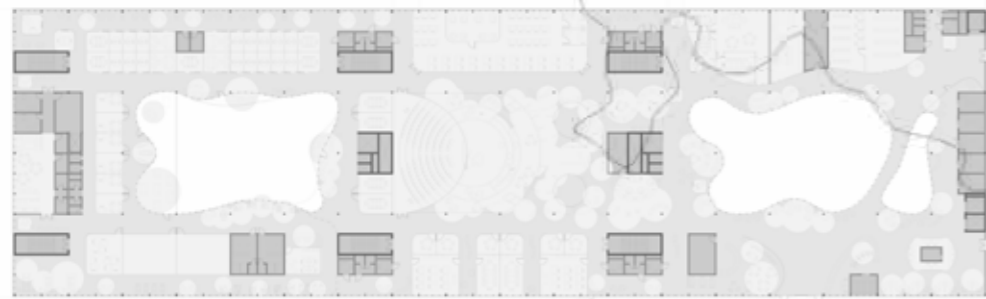
There are 3 elevators created for people going to the acute center which are separated from the public.



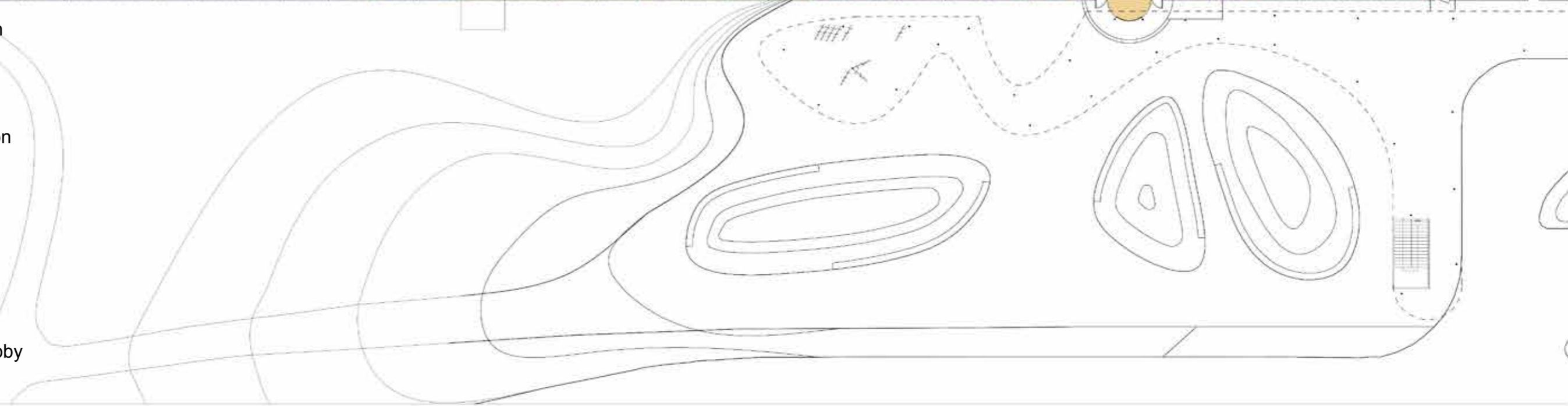
- Investigation
- Learning
- Rehabilitation
- Acute
- Trauma
- Homecare
- Entrance lobby
- Triage



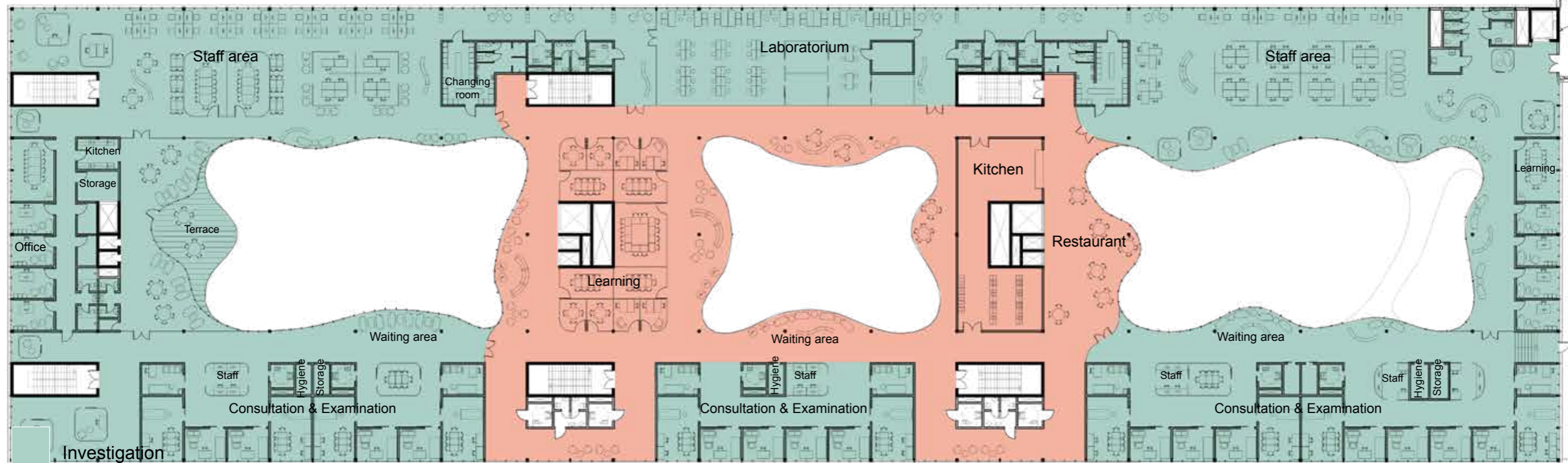
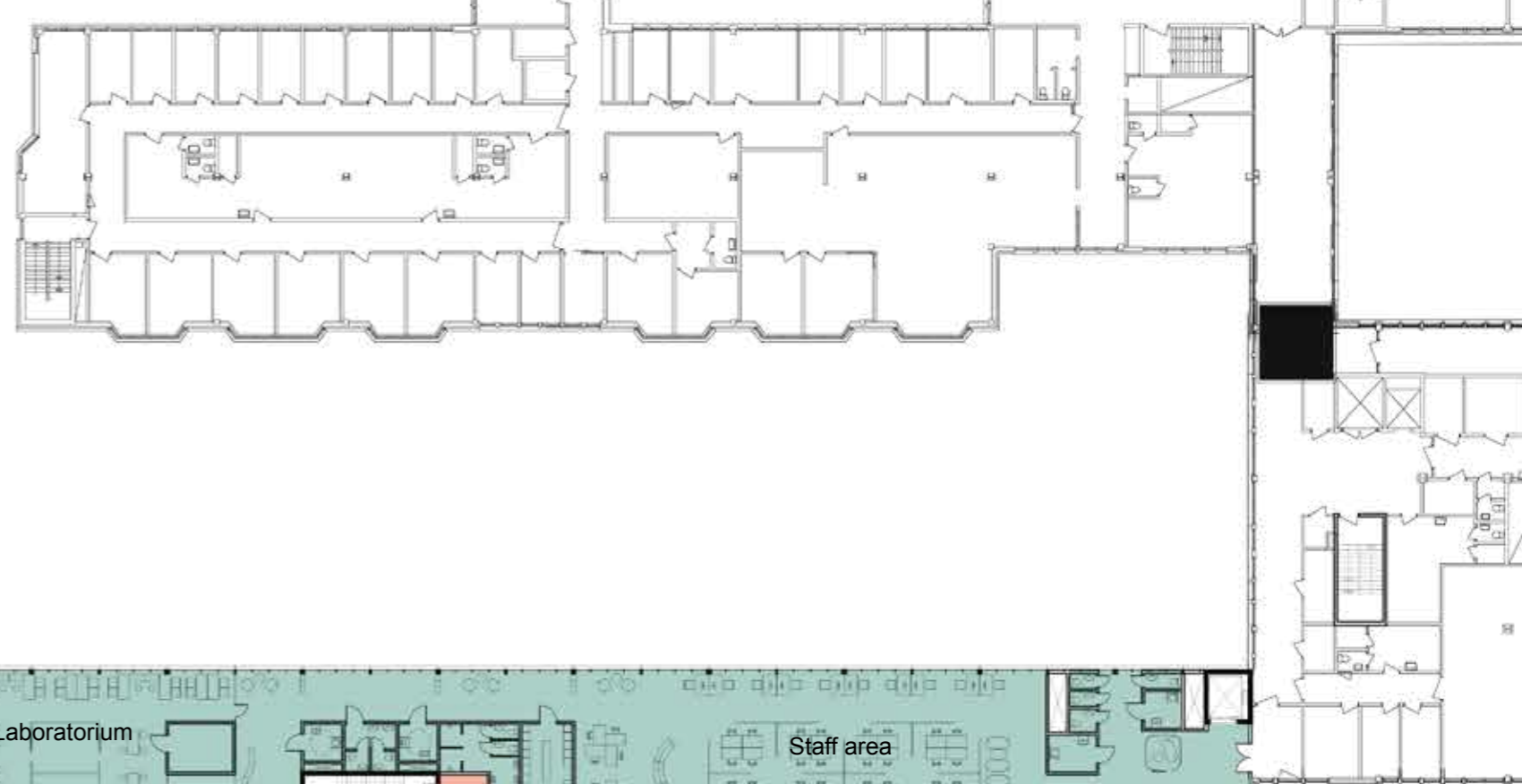
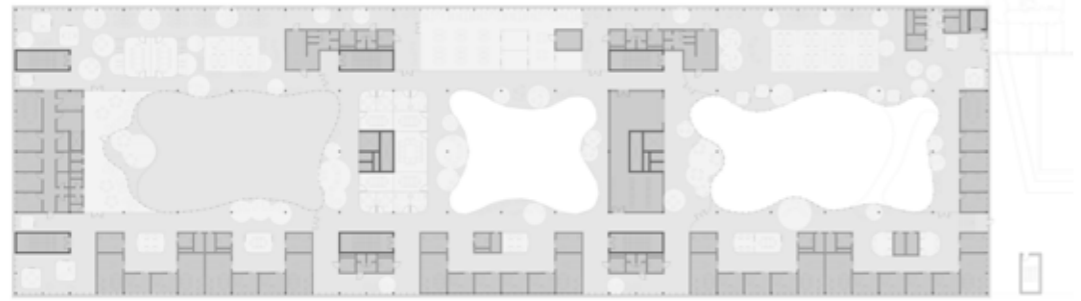
PEOPLE MEET PEOPLE 4TH(MAIN ENTRANCE) FLOOR PLAN 1:400



- Investigation
- Learning
- Rehabilitation
- Acute
- Trauma
- Homecare
- Entrance lobby
- Triage

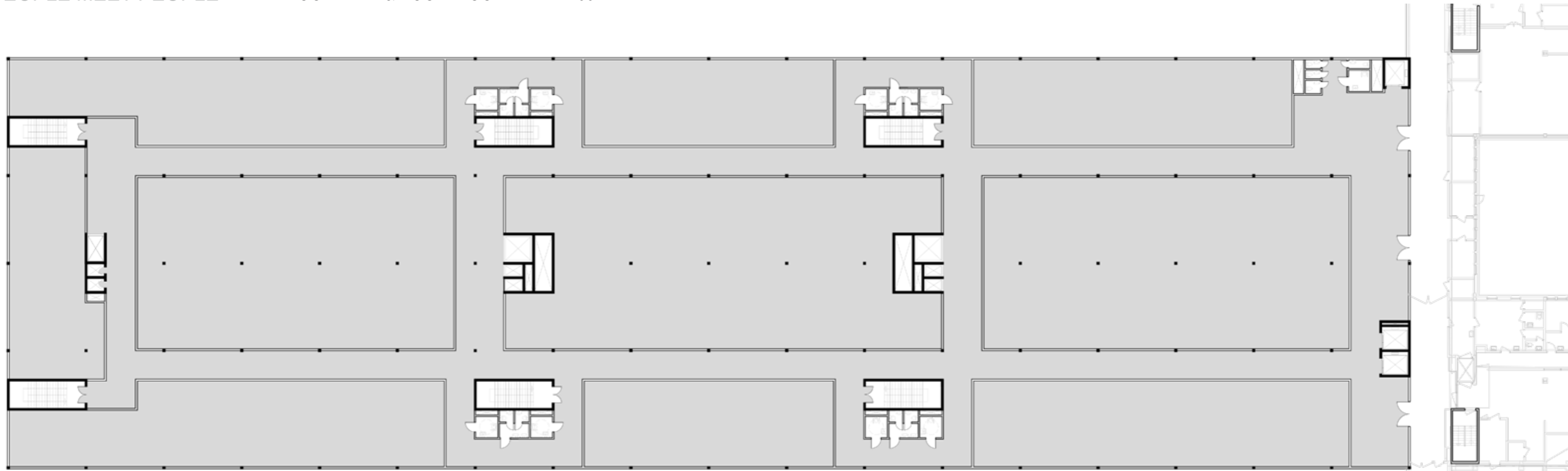




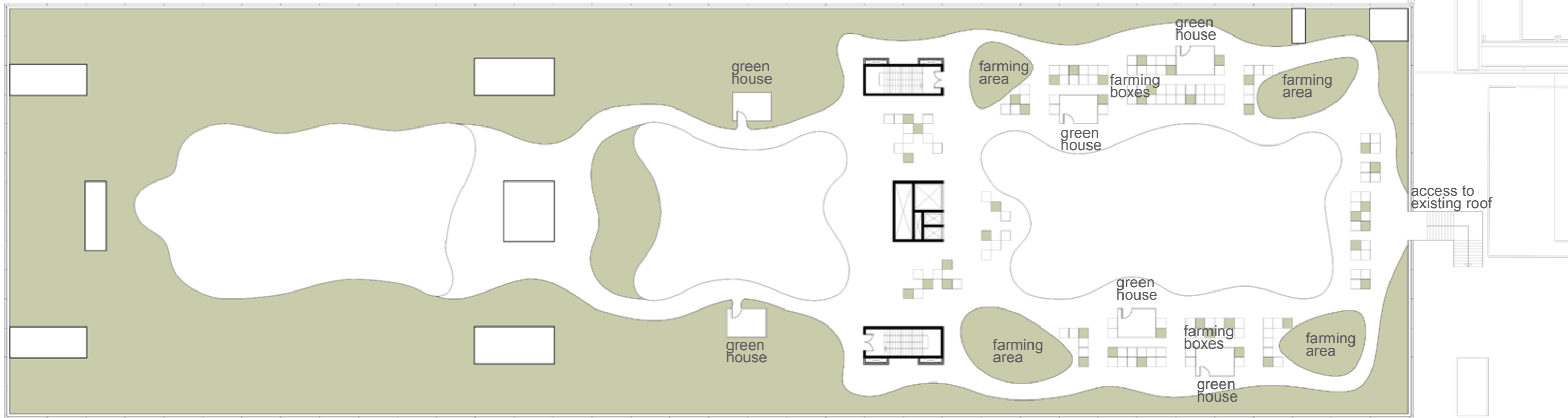


- Learning
- Rehabilitation
- Acute
- Trauma
- Homecare
- Entrance lobby
- Triage





TECHNOLOGY FLOOR 1:400



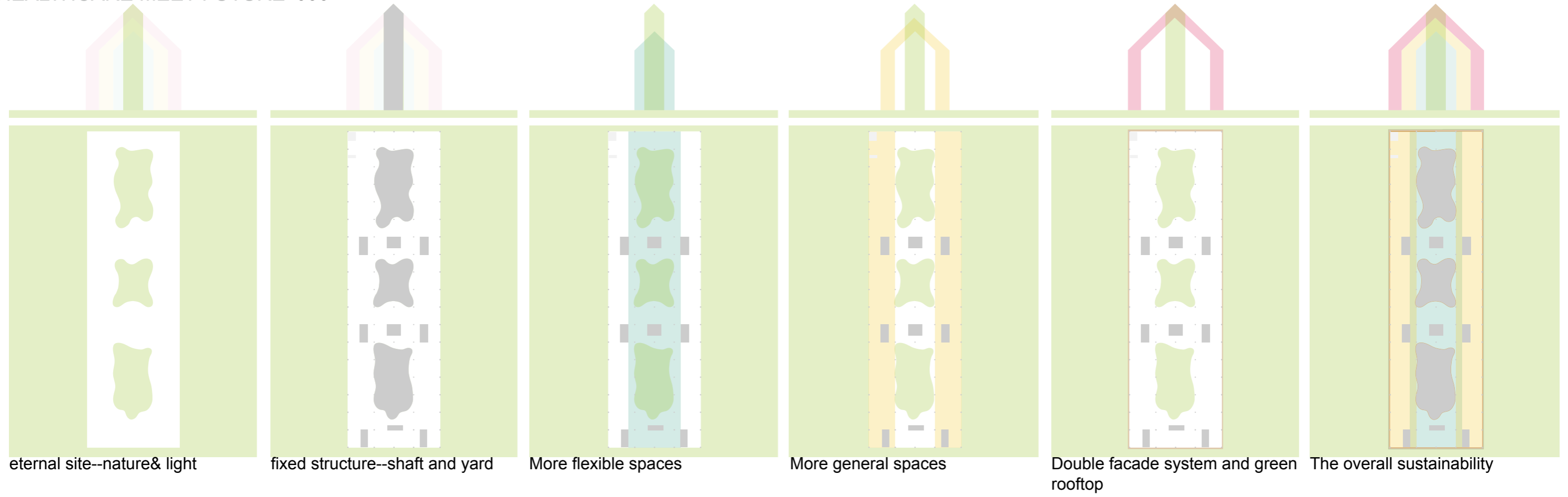
ROOF FLOOR 1:400



PEOPLE MEET PEOPLE 3D PERSPECTIVE SECTION

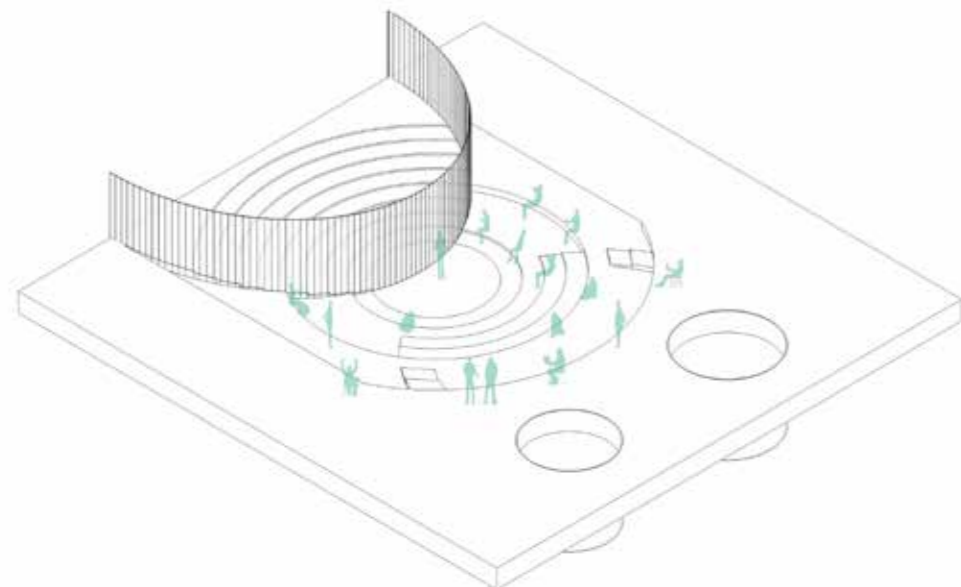




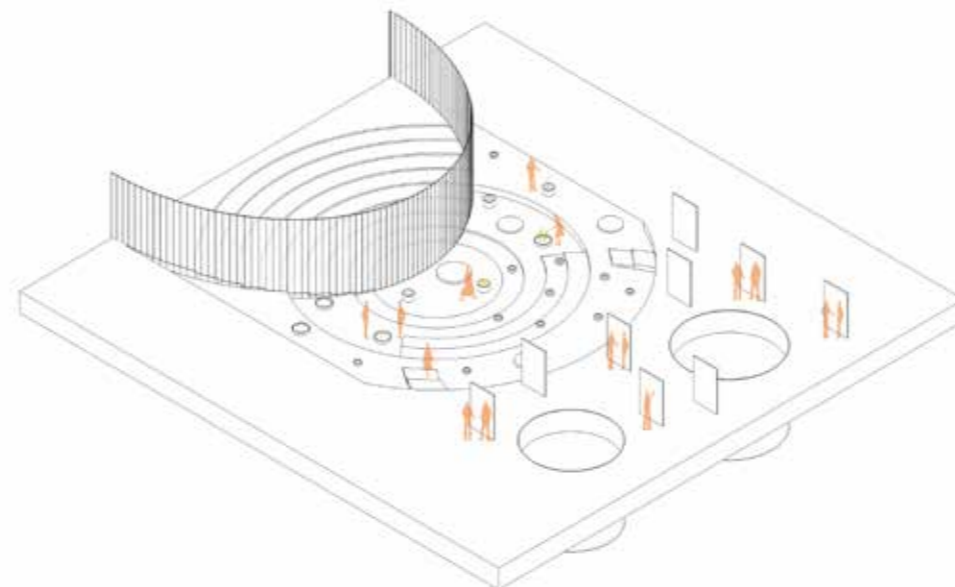


MULTIFUNCTIONAL USE OF THE LIGHT YARD

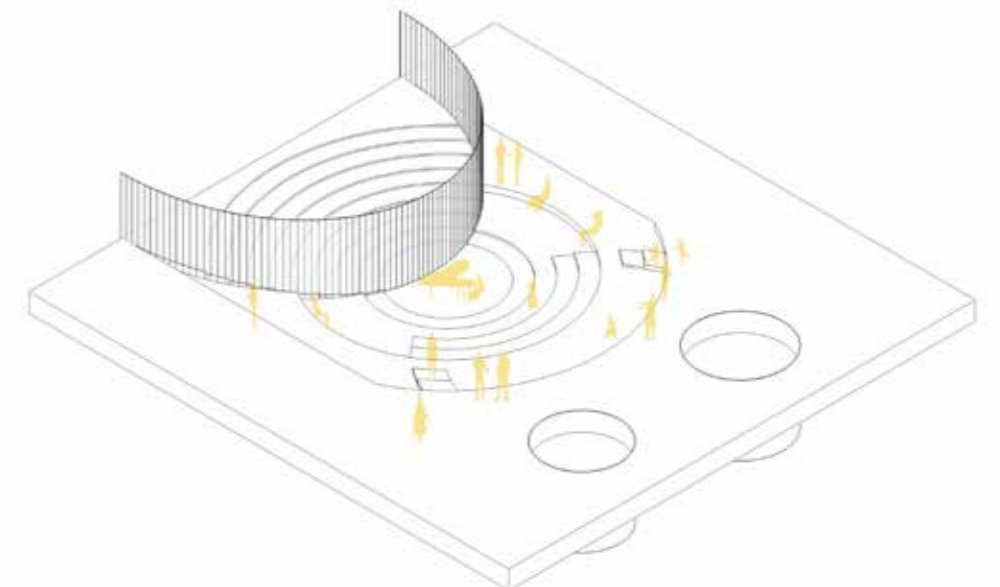
Informal lecture



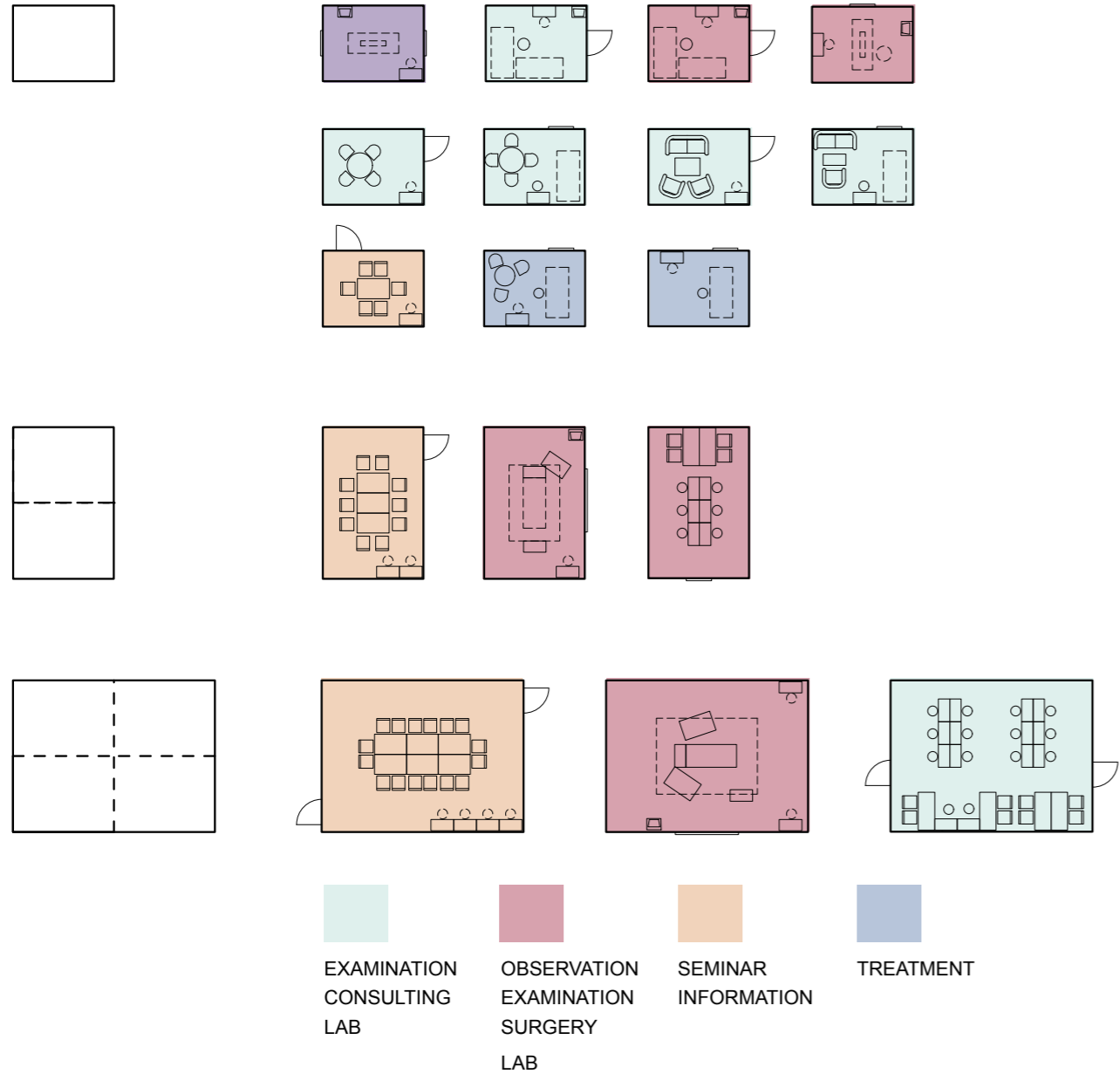
Educational exhibition



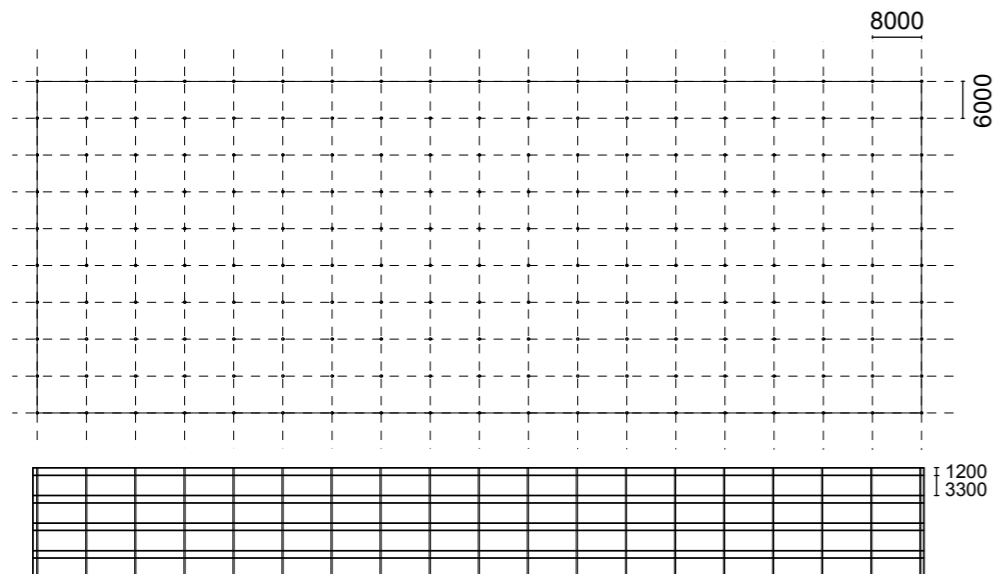
Art performance



CATELOGUE OF STANDARLIZED ROOMS

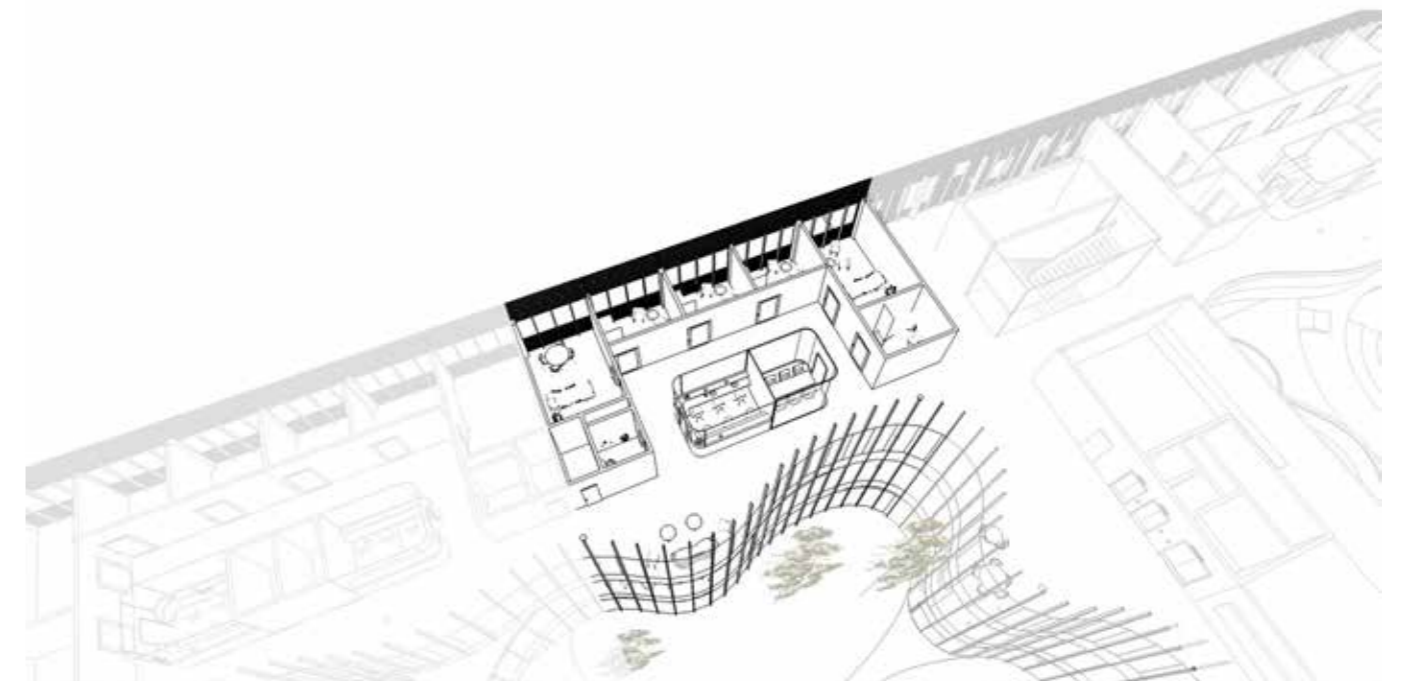
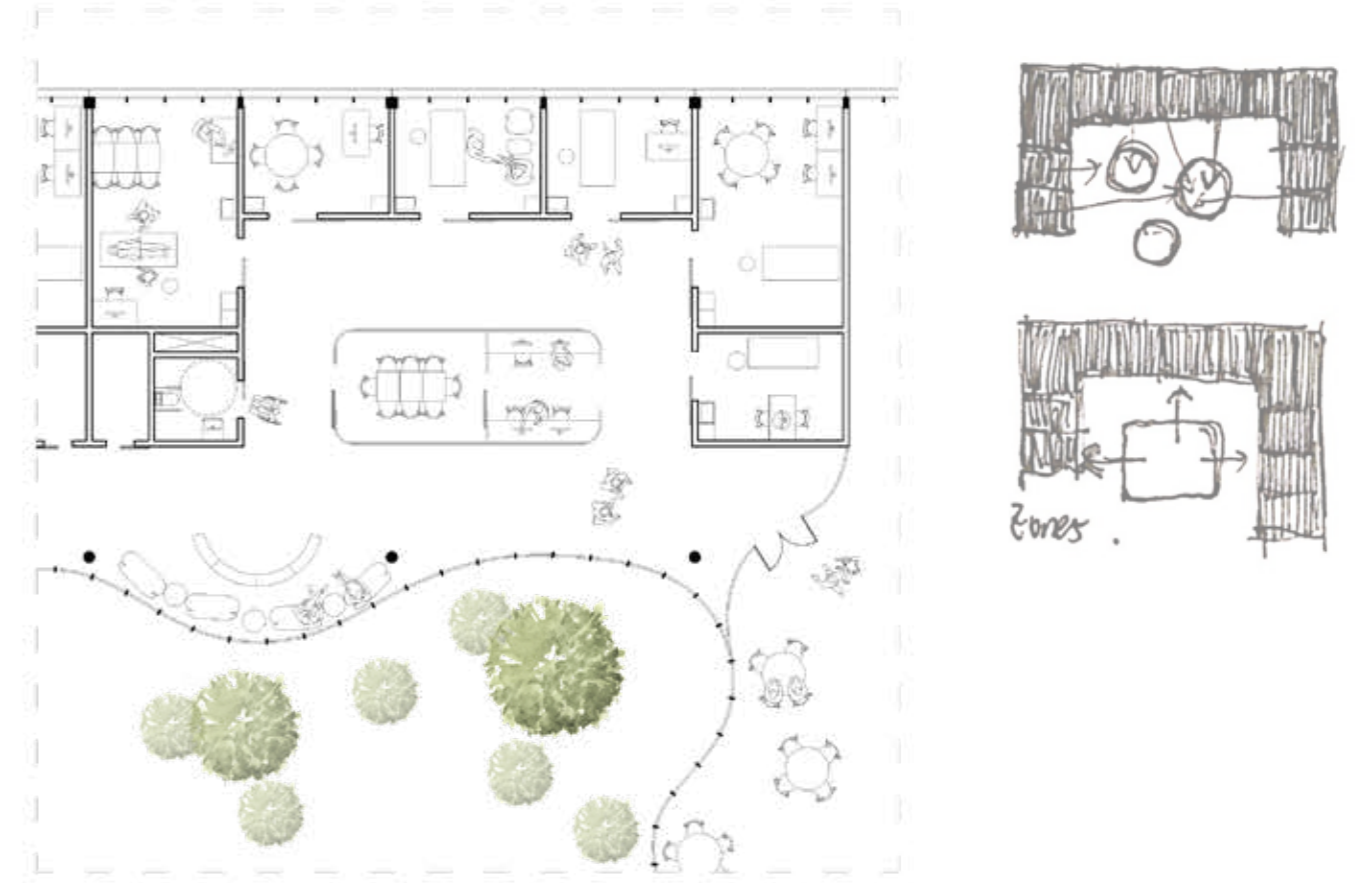


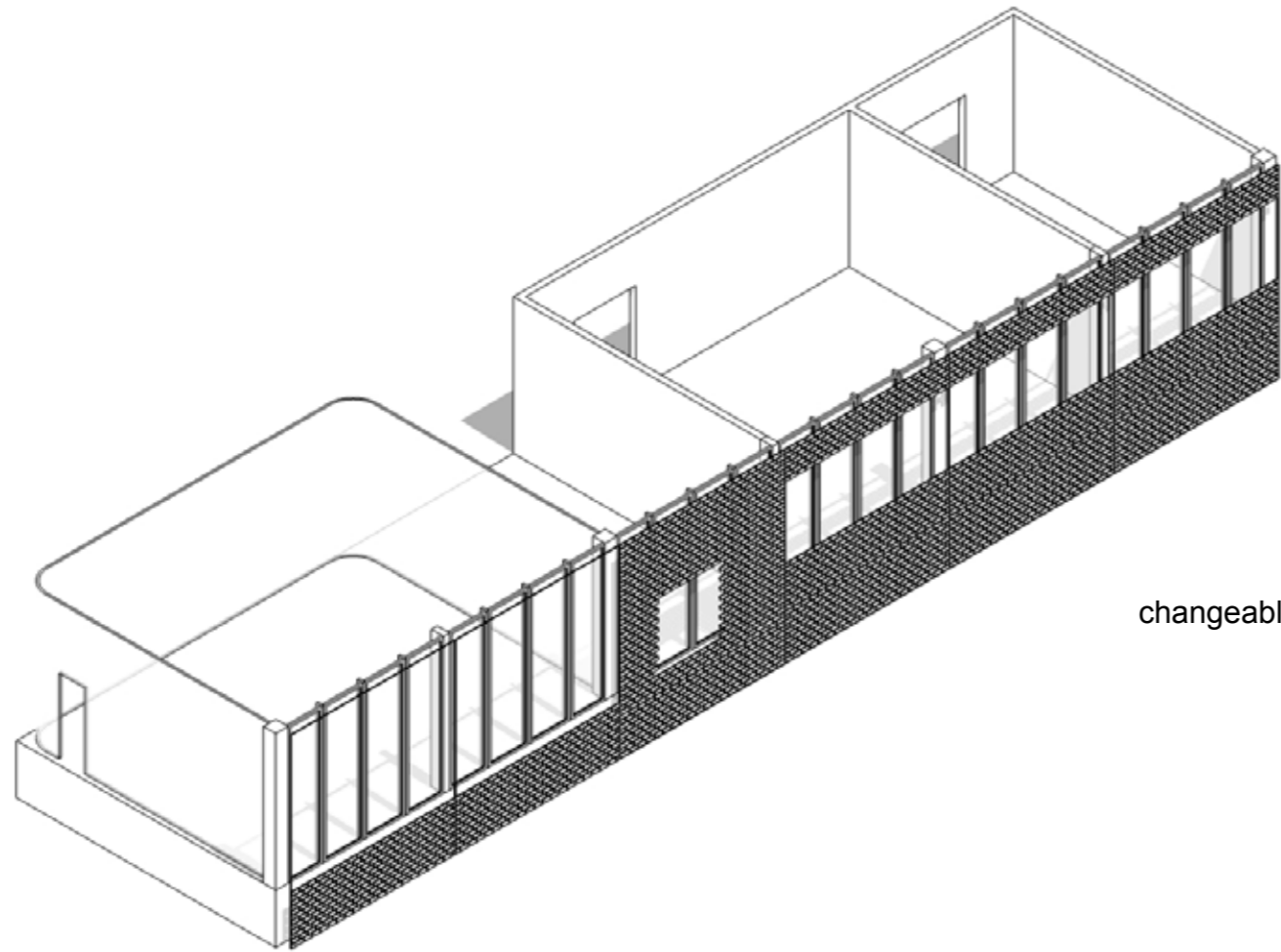
GENERAL GRID SYSTEM



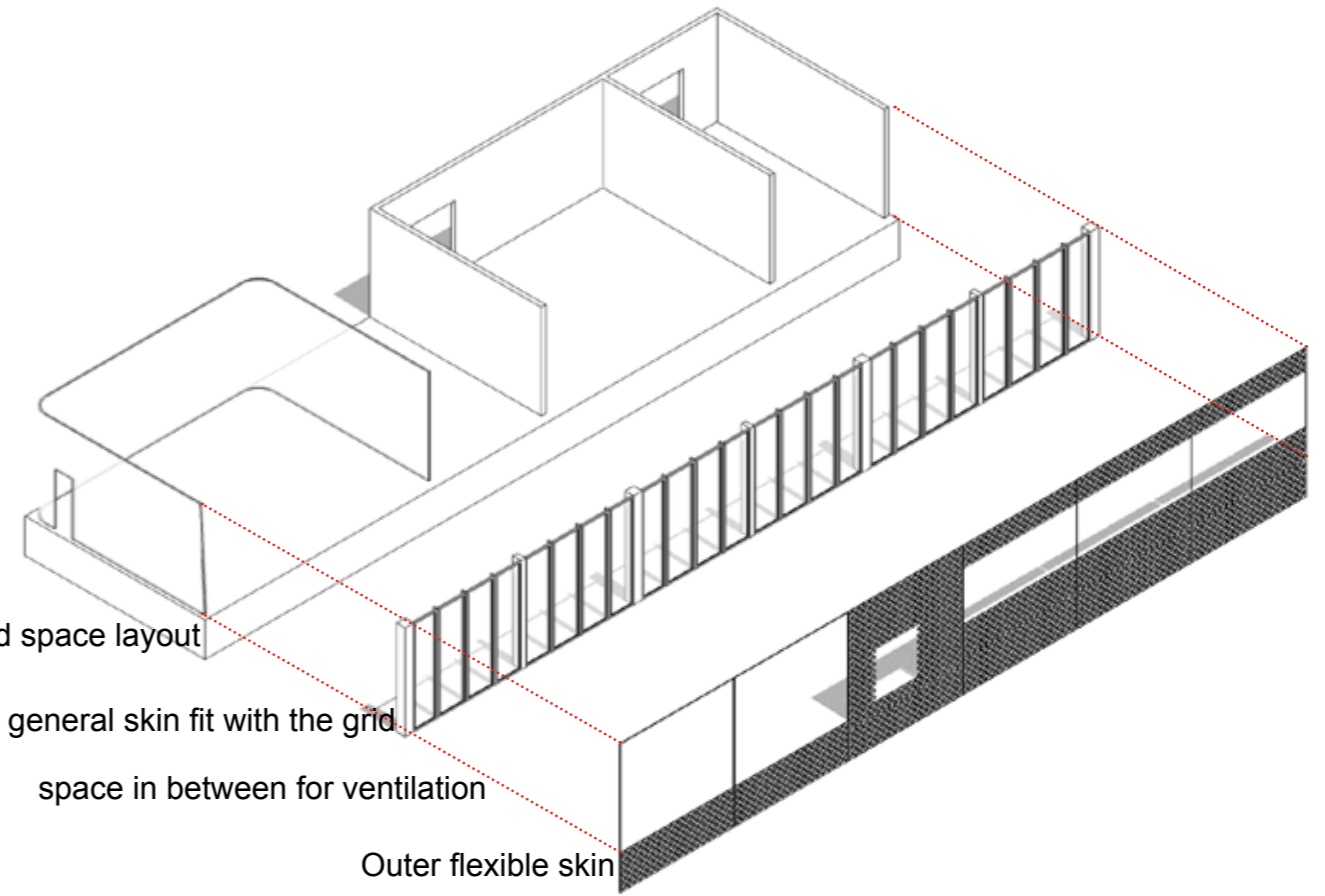
U-SHAPED INVESTIGATION CLUSTER

The standardized rooms are worked flexibly in a U-shaped cluster. It is specialized for old people and multi disease people. All different caregivers can come to the patient and meet in the soft room which could be worked as a co-design workshop.





changeable rooms and space layout



Inner general skin fit with the grid

space in between for ventilation

Outer flexible skin

DOUBLE FACADE SYSTEM

GREEN ROOFTOP



vegetation box

moss

green house

sculptural staircase

