



GREENWOOD HOUSE

HEALTHY INSIDE - HEALTHY OUTSIDE

SAMAN ALIRAMAEI & KRISTIN ORETORP

SITE ANALYSIS

The city centre of Karlskrona is located on the island Trossö, with the narrow connection to the mainland just north of our site. This makes the site an important part of the entry to the city.

There are a lot of things happening around the site. The main traffic route passes between the site and the railway station. South of the plot the large Hoglands park offers recreation and greenery to the city.

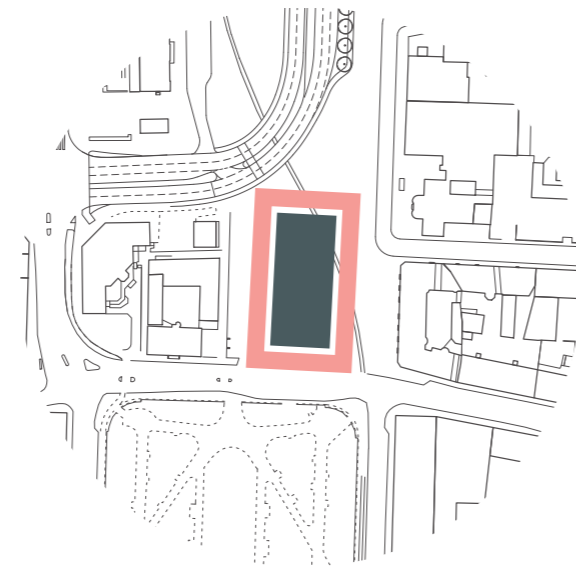


SUN MOVEMENT

The site creates good opportunities to take advantage of the sun's movement. The large trees in the park offers mid day shade, and the low buildings west of the site allows the afternoon sun to reach the facade during all seasons of the year.

The plot is surrounded by important historical buildings and the old cargo railway runs straight through the site. But to the north the areas around the railway station are undergoing major transformation, with an emerging urban city landscape facing the quayside.

Our plot is located at the gates of the city centre, on a site where density is low, history is rich and the future is on the way.



ACTIVE FACADES

The placement of the building on the site demands careful design of all facades, as lively public spaces will surround the building. Entrances and activities on each side will be necessary to contribute to the urban liveliness desired.



- TRAFFIC FLOW ———
- PEDESTRIAN FLOW
- OLD RAILWAY
- SITE ●
- MAJOR LOCUS ●
- HISTORICAL ARCHITECTURE ●
- MODERN ARCHITECTURE ●
- GREEN PARK ●

DESIGN STRATEGIES | SITE & CONTEXT

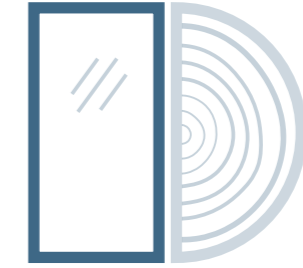
ISSUE OF CONCERN

THE SITE IS FACING BOTH HISTORICAL ELEMENTS AND A NEW URBAN LANDSCAPE

DESIGN STRATEGY

Two contrasting exterior design systems. Soft shapes and organic materials facing the older architecture to the east. Glass and flat surfaces greeting the new areas to the west.

CONTRASTS IN FACADE



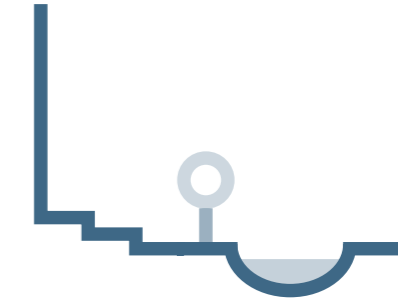
ISSUE OF CONCERN

GROUND FLOOR HEIGHT REGULATIONS CREATES DIFFICULTIES

DESIGN STRATEGY

Handling the height regulations within the landscape design. By using levels as a design feature in the landscaping a dynamic outdoor space can be created.

DYNAMIC LEVELS



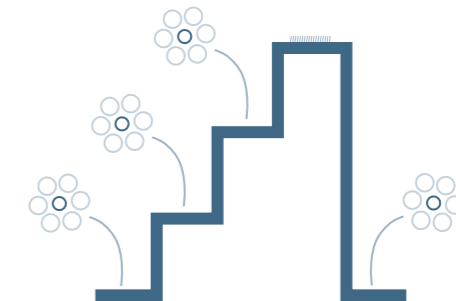
ISSUE OF CONCERN

THE SITE USED TO BE AN EXTENSION OF THE PARK, AND STILL OFFERS GREENERY

DESIGN STRATEGY

Adding new green spaces on the ground as well as on the roofs can contribute both to a health promoting environment and to the possibility of actively supporting biodiversity.

ENHANCED GREENERY



DESIGN STRATEGIES | BRIEF, LOGISTICS & HEALTH PROMO

ISSUE OF CONCERN

RISK THAT INTERNAL FLOWS ARE BUILT ON TRADITIONAL WORK STRUCTURES RATHER THAN VISITOR EXPERIENCE

DESIGN STRATEGY

Putting visitors at the centre of internal flows by supporting intuitive wayfinding. Using technology as an added reception feature, leading the visitor in the right direction at the right time.

WAYFINDING



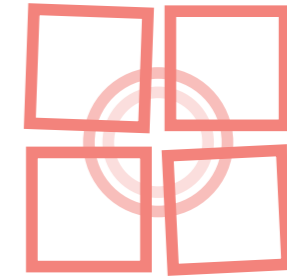
ISSUE OF CONCERN

THE BUILDING SHOULD ENCOURAGE COOPERATION BETWEEN DEPARTMENTS

DESIGN STRATEGY

Departments and facilities should be placed so that cooperation around the patient is possible. Shared spaces where possible to use the building surfaces efficiently.

CO-WORKING CARE



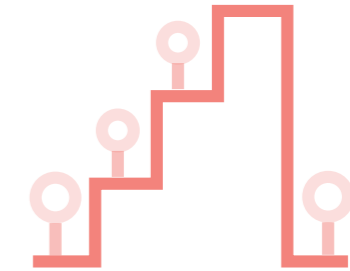
ISSUE OF CONCERN

ELEMENTS OF NATURE HAVE A POSITIVE IMPACT ON HEALTH

DESIGN STRATEGY

Accessible views to the park for both staff and visitors. Green roofs made accessible for staff for both work and recreation. Patients at the rehab clinic should be able to do rehab training outdoors.

ACCESSIBLE GREENERY



DESIGN STRATEGIES | SUSTAINABILITY & FUTURE PROOFING

ISSUE OF CONCERN

THE SITE IS PRONE TO FLOODING DURING HEAVY RAINS

DESIGN STRATEGY

Added greenery on the ground and on the rooftops will contribute to natural stormwater management. Ponds connected to an underground watertank work as regulators.

STORMWATER MANAGEMENT



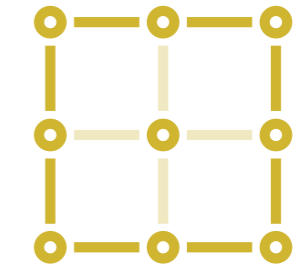
ISSUE OF CONCERN

BUILDINGS NEED TO BE ADAPTABLE TO STAY RELEVANT OVER TIME

DESIGN STRATEGY

Implementing a grid system in the floor plans simplifies the construction process and makes it easy to add and remove walls without regard to the load bearing qualities. CLT-wall components can be moved and reused within the system.

FLEXIBLE GRID SYSTEM



ISSUE OF CONCERN

REDUCING BUILDING CONTRIBUTION TO CARBON EMISSIONS

DESIGN STRATEGY

Lowering the carbon footprint of the building by mainly using materials and building components that are organic and/or have low inherent energy levels.

ORGANIC MATERIALS



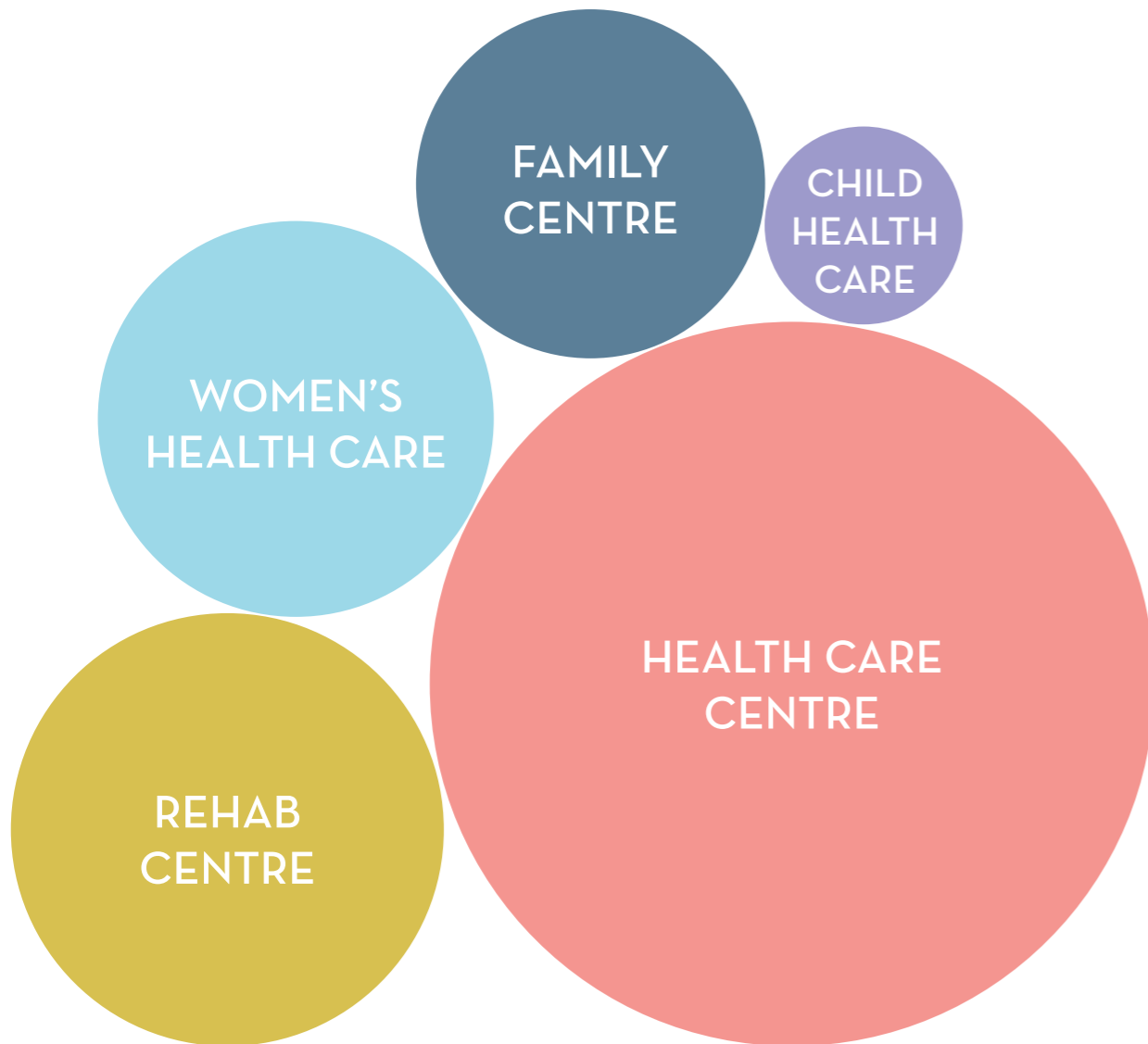
BRIEF | UNITS INCLUDED IN OUR PROGRAM

The possibility of cooperation between departments in order to put the patient in focus is one of our fundamental design strategies. Thus, we wanted to focus on units that could obtain a high level of cooperation and form relevant collaborations around the patients.

Knowing that both the Child Health Care Clinic and the Women's Health Care Clinic come in contact with a substantial amount of families, a

Family Centre seemed to be missing from the brief. Placing it strategically between the Children's and Women's departments makes it accessible when the other departments come in contact with families that need immediate support.

The presence of a Rehabilitation Centre also creates possibilities for cooperation, with access to expertise when a patient comes in with certain pains or injuries.



SET FUNCTIONS

HEALTH CARE CENTRE

Traditional health care in a modern work flow, promoting collaboration and human centered care.

CHILD CARE CENTRE

Health check ups, vaccination and parenting groups for children between 0-5.

REHAB CENTRE

Traditional rehabilitation centre, but with access to outdoor facilities, one focused on physical rehab and one on psychological (green rehab).

WOMEN'S HEALTH CARE

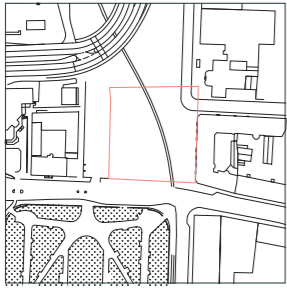
Traditional program for women's health care, with reproductive health in focus.

FAMILY CENTRE

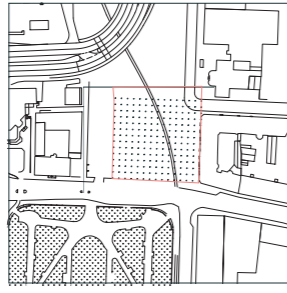
Unit cooperation between health care and social services. Collaborative work flows gives opportunities for early interventions and support to families that are at risk of dysfunction.

ADDED FUNCTIONS

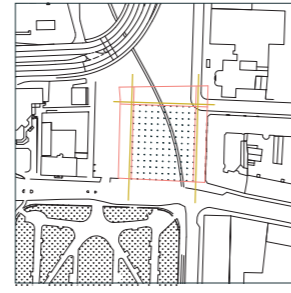
PROCESS | FINDING OUR VOLUME



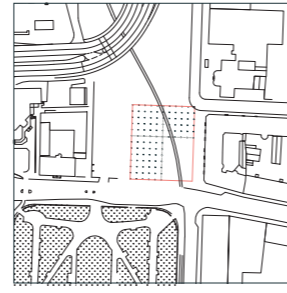
1. PLOT
The designated plot.



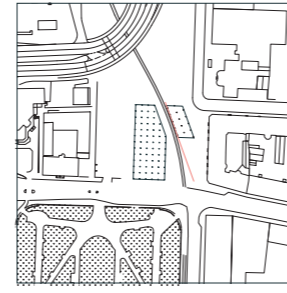
2. GRID
A grid system of 4x4 m is implemented to create a flexible structure supporting suitable room sizes.



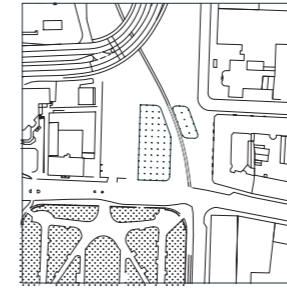
3. SIGHTLINES
Constraints of the plot to support sightlines around the building.



4. OPEN SPACE
Constraints of the plot to create an open space in front of Fribergsska huset.



5. SITE ADAPTATION
Opening up for existing pedestrian communication along the old railway, using its tangent to add another angle to the building.



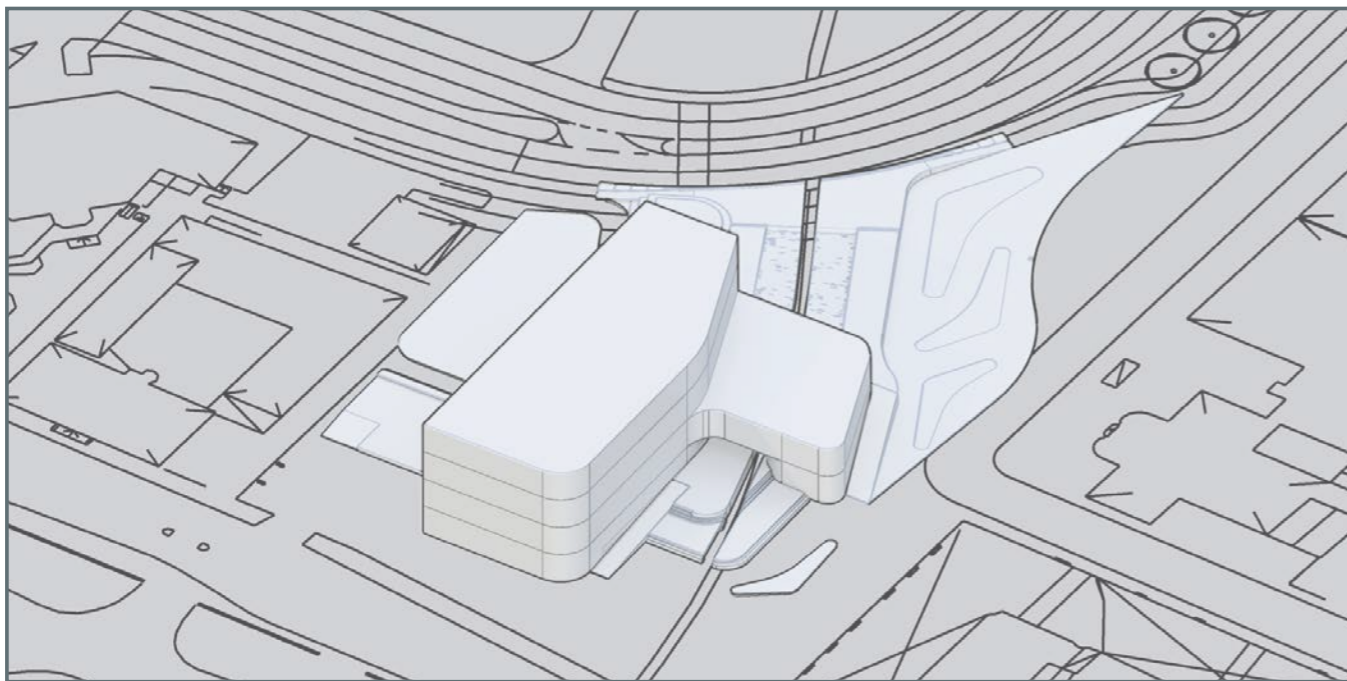
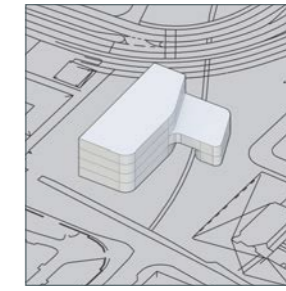
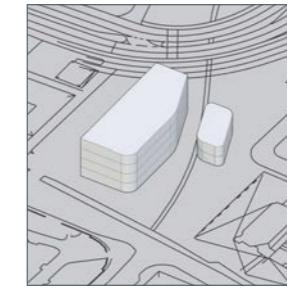
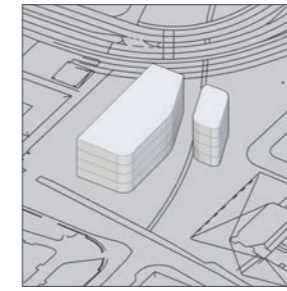
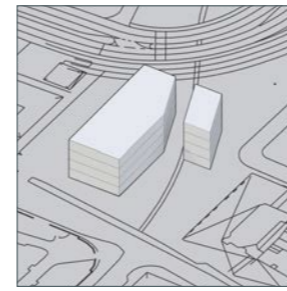
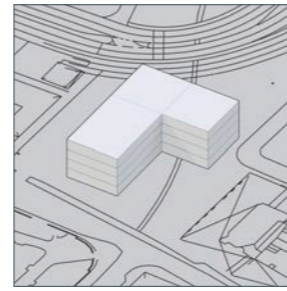
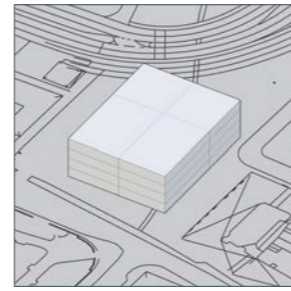
6. STRATEGIES
Soft corners are applied on the east-facing facades, in accordance with our design strategies.



7. ADDING AIR
The smaller eastern volume is brought down to two levels, leaving Fribergsska huset visible from the station.



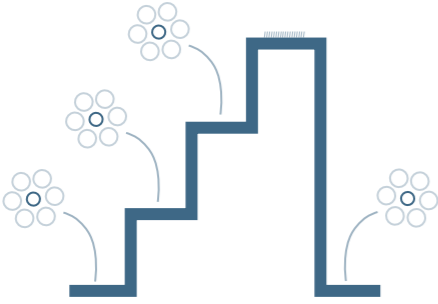
8. CONNECTION
The two volumes are re-connected on level 2, merging them back into one entity and at the same time providing a roof top terrace.



9. LANDSCAPING IN DIFFERENT LEVELS IS ADDED TO THE SITE

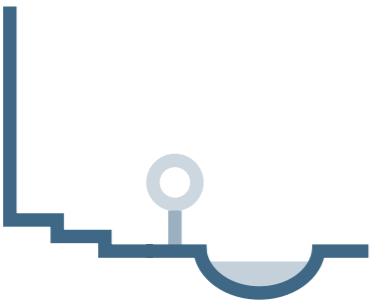
SITE PLAN | 1:1000

ENHANCED GREENERY



Vegetation has been added both on the ground and on the roof top and terraces. The biotope roof on top of the Rehab Centre will support pollinating species. The green terrace on top of the Family Centre offers a garden-like space for the staff, where they can spend breaks - or bring their computer outside for work.

DYNAMIC LEVELS



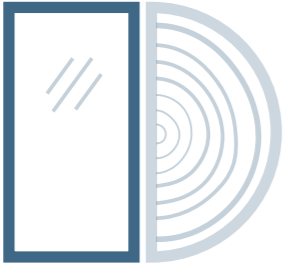
The landscape surrounding the building is designed in different levels, with ramps, stairs and seating opportunities that create multiple pathways and social spaces.

STORMWATER MANAGEMENT



In addition to the green roofs, five ponds with connection to underground water tanks are regulating stormwater. The ponds on the eastern side create a connection between the park in the south and the water in the north.

CONTRASTS IN FACADE



To the east - which also incorporates the northeast and southeast - all corners have been softened to address the soft corners of Fribergsga and the Bath house. On the west facade, the sharp corners and glass envelope creates an illusion that the building has been cut through the middle, leaving the inside exposed.



FLOWS | VERTICAL & OPERATIONAL CONNECTIONS

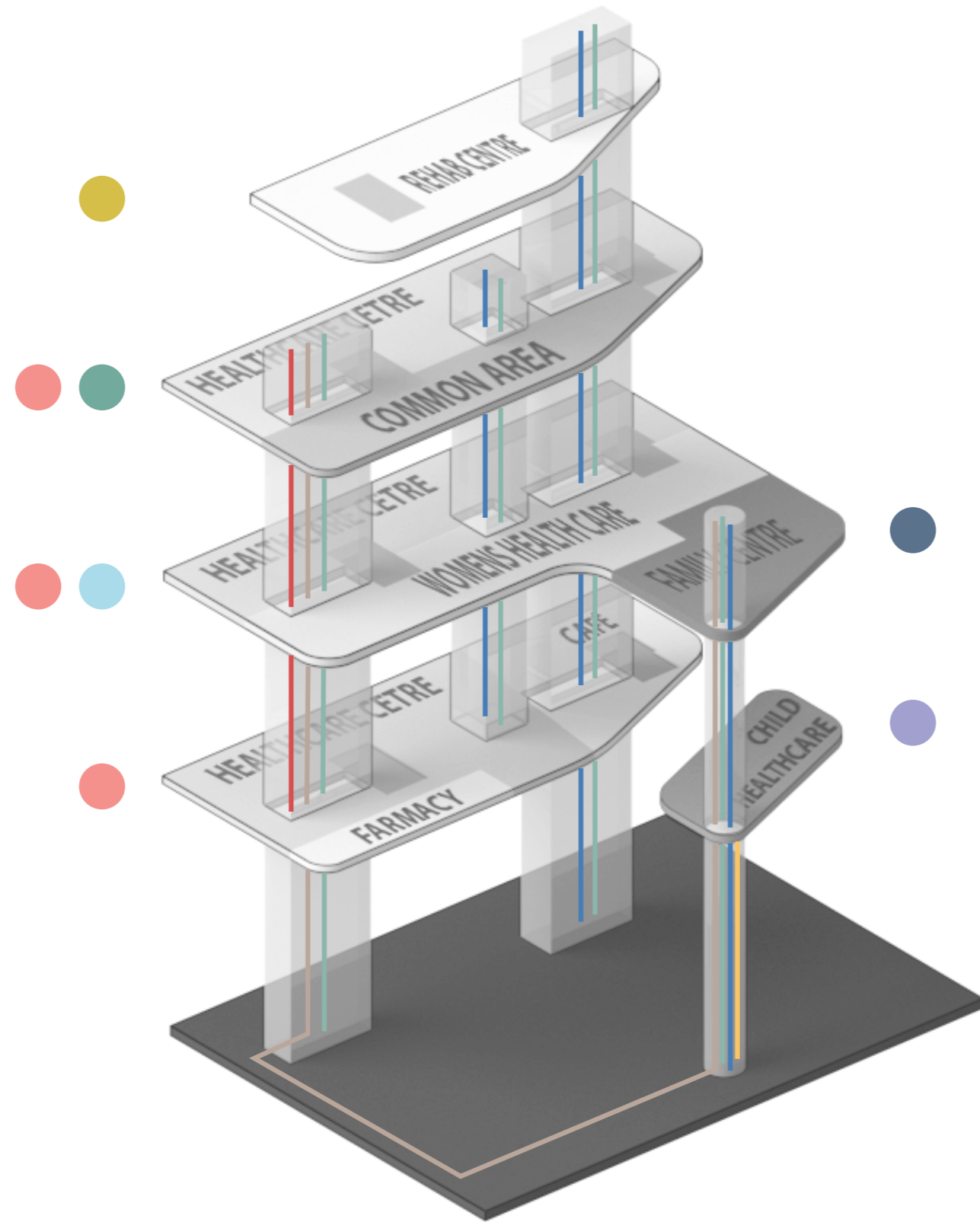
The larger volume contains two main cores, housing elevators and internal staircases. The north core is accessible for public use, and the south core is mainly used by staff, emergency transport and deliveries.

A sculptural and open staircase encourages both visitors and staff to use the stairs when moving between the floors.

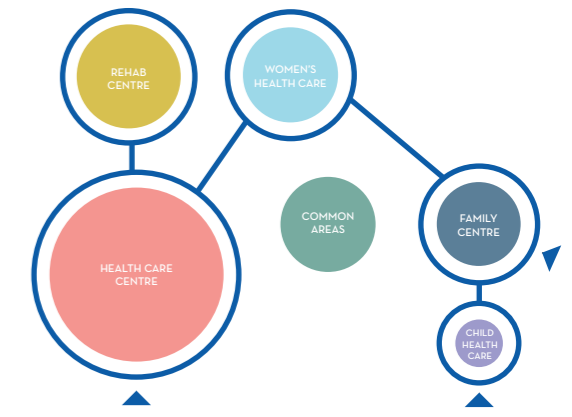
The Child Health Care Clinic and the Family Centre have a separate, shared entrance. The Family Centre is placed above the Child Health Care Clinic, in close contact with the Women's Health Care Clinic on the second floor. Since the Family Centre belongs to another organisational unit, the separated entrance is important to ensure integrity, as well as providing a unit that is sealed off from the others but can be opened when necessary.

Public accessibility to the underground garage after opening hours takes place through the entrance in the small volume.

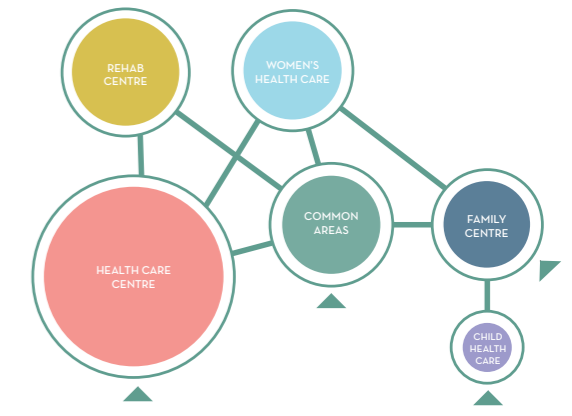
Level 1 houses the shared reception and waiting space, as well as a Pharmacy and a Cafeteria. Both have separate entrances, but can also be accessed from the reception/waiting area.



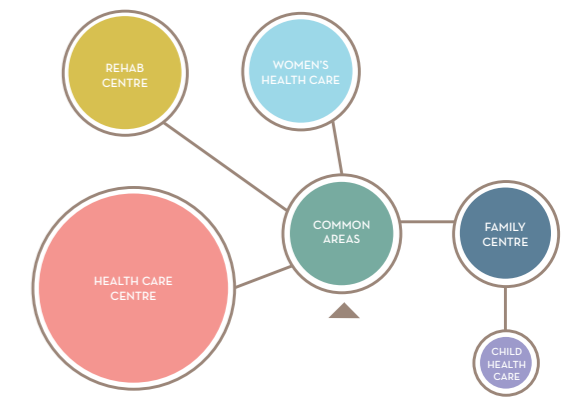
PATIENT FLOWS



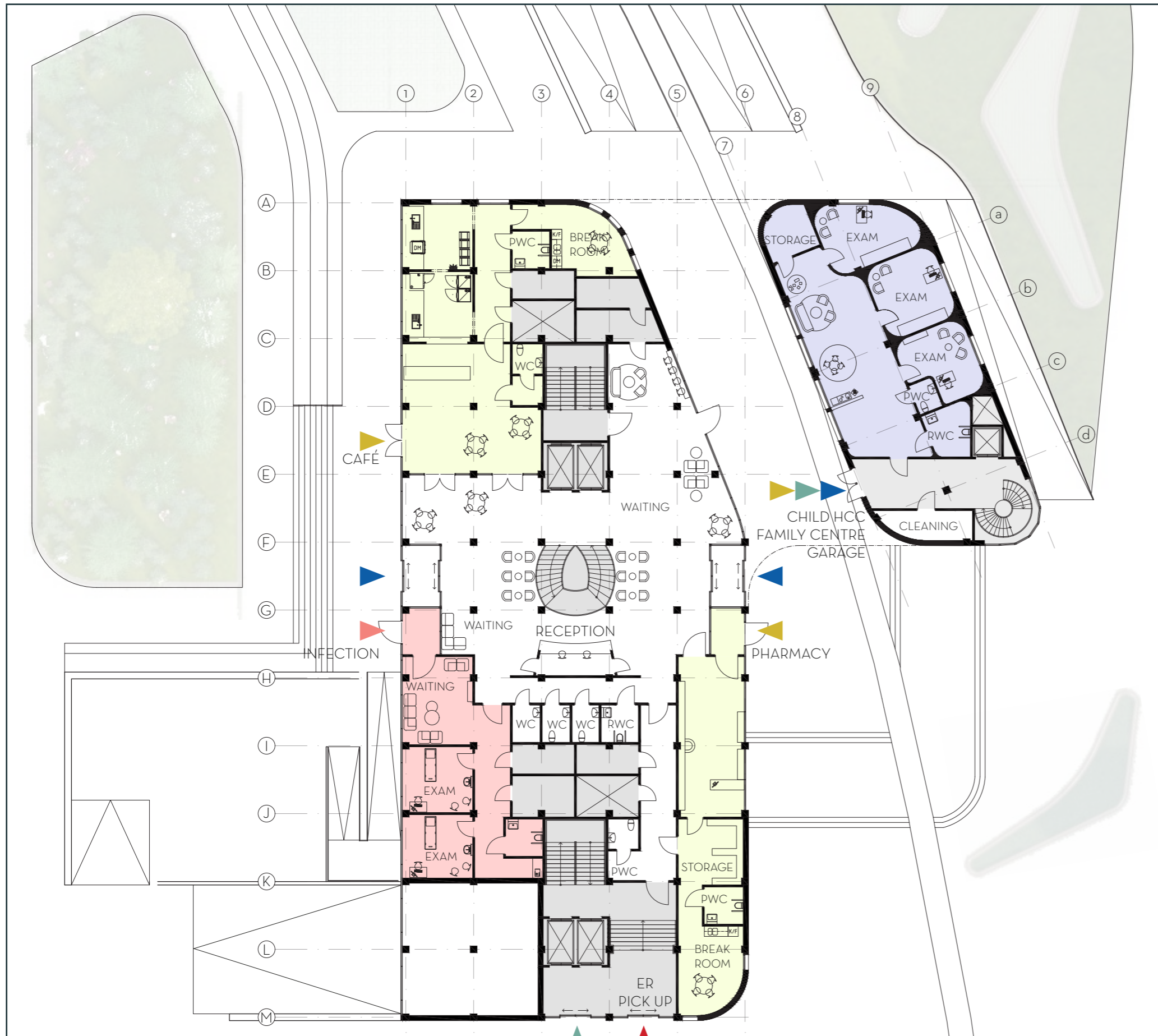
STAFF FLOWS



DELIVERIES



FLOORPLAN | LEVEL 1 | 1:250



Level 1 houses the large reception and waiting hall where visitors can check in either via the manned reception desk or through a digital solution. Patients can choose to wait in the hall, outside or to proceed directly to the inner waiting rooms if they are revisitors and know their way. When a staff member is ready to see them, they receive a text message with instructions where to go.

The Infection Clinic has a separate entrance, but is located close to the reception so that patients that enter through the wrong door can quickly be redirected.

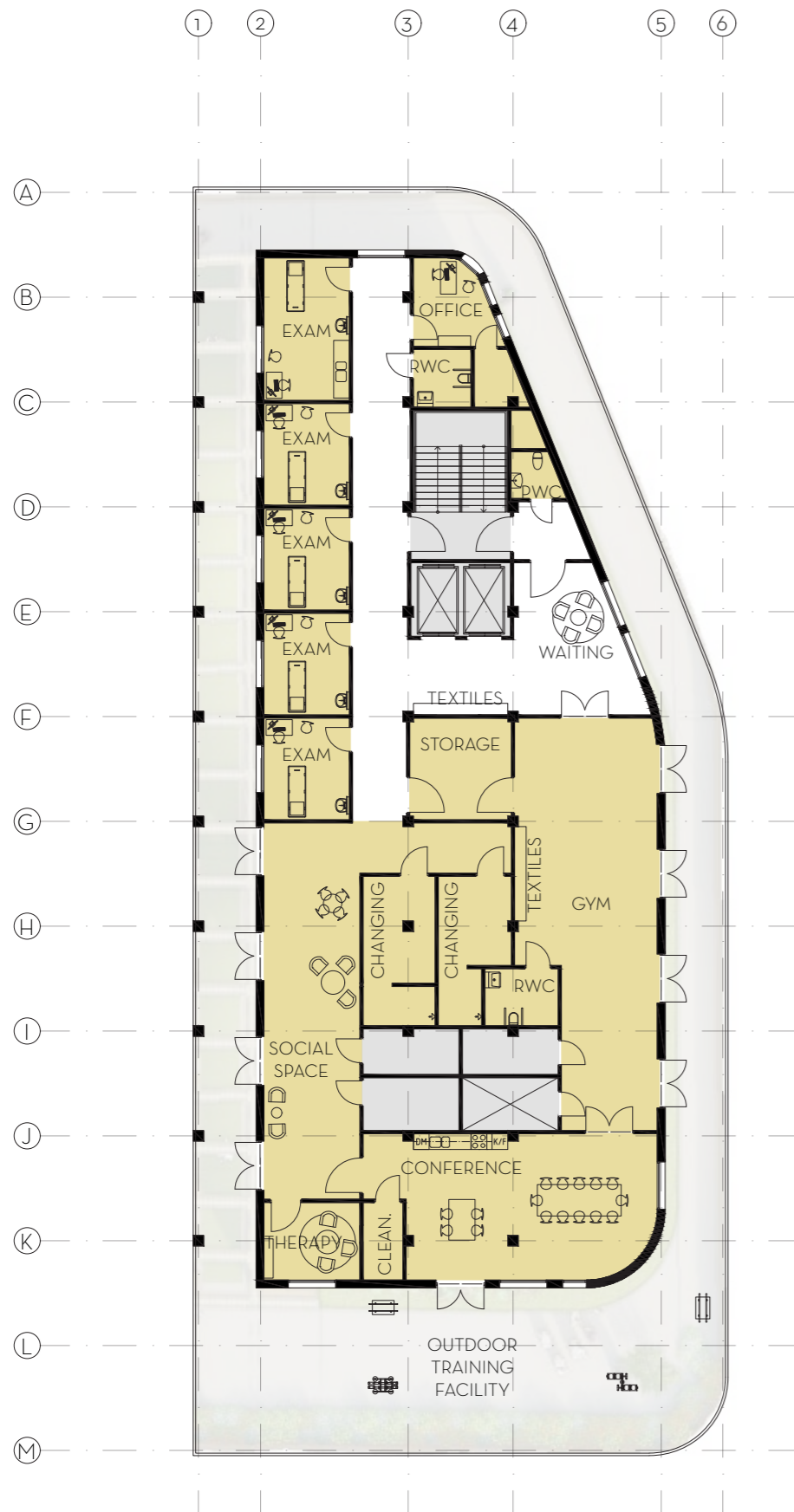
A cafeteria facing west and the afternoon sun and a pharmacy facing the eastern square, both have their own entrances, but can also be reached from the reception hall.

In the small building the Child Health Care Centre is located. The soft corners from the exterior has moved inside to give an inspiring environment for small children.

- HEALTH CARE CENTRE
- CHILD HEALTH CARE CENTRE
- PHARMACY & CAFÉ
- COMMUNICATIONS
- ▶ HEALTH CARE CENTRE
- ▶ INFECTION
- ▶ EMERGENCY PICK UP
- ▶ STAFF
- ▶ DELIVERIES
- ▶ ADDED FUNCTIONS & GARAGE



FLOORPLAN | LEVEL 4 | 1:250



On the top floor the Rehabilitation Centre is located. The terrace offers opportunities for outdoor training, with a training facility on the patio facing the park. Patients can also use the path around the building to achieve goals, such as "I'll walk around in 15 minutes today" or "I'll walk to the second bench before I rest".

The gym opens up to the terrace, and so does the conference room and the large space that has been set aside as a social area where patients can meet each other in an informal way.

<div style="width: 10px; height: 15px; background-color: #e67e22; margin-bottom: 5px;"></div> HEALTH CARE CENTRE LEVEL 1 LEVEL 2 LEVEL 3	896 m² 84 m ² 403 m ² 409 m ²
<div style="width: 10px; height: 15px; background-color: #6b8e23; margin-bottom: 5px;"></div> CHILD HEALTH CARE CENTRE LEVEL 1	134 m ²
<div style="width: 10px; height: 15px; background-color: #3498db; margin-bottom: 5px;"></div> WOMEN'S HEALTH CARE CENTRE LEVEL 2	430 m ²
<div style="width: 10px; height: 15px; background-color: #2c3e50; margin-bottom: 5px;"></div> FAMILY CENTRE LEVEL 2	214 m ²
<div style="width: 10px; height: 15px; background-color: #f1c40f; margin-bottom: 5px;"></div> REHABILITATION CENTRE LEVEL 4	447 m ²
<div style="width: 10px; height: 15px; background-color: #f39c12; margin-bottom: 5px;"></div> CAFETERIA LEVEL 1	140 m ²
<div style="width: 10px; height: 15px; background-color: #f1c40f; margin-bottom: 5px;"></div> PHARMACY LEVEL 1	86 m ²
<div style="width: 10px; height: 15px; background-color: #27ae60; margin-bottom: 5px;"></div> SHARED SPACES LEVEL 1 LEVEL 2 LEVEL 3	638 m² 331 m ² 9 m ² 298 m ²
<div style="width: 10px; height: 15px; background-color: #95a5a6; margin-bottom: 5px;"></div> VERTICAL COMMUNICATION LEVEL 1-4	564 m ²
<div style="width: 10px; height: 15px; background-color: #95a5a6; margin-bottom: 5px;"></div> TECHNICS AND SHAFTS ABOVE GROUND BELOW GROUND	317 m² 225 m ² 92 m ²
TOTAL BTA	3.836 m²



FLOORPLAN | PARKING GARAGE | 1:250

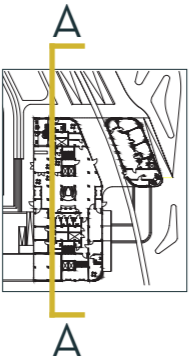
The garage holds 38 parking spaces, two of which are large parking spots. In addition to this there are 2 large parkings on ground level next to the entrance on the west side, and 10 parking spaces are added along Österleden.

Technical areas and main storage is also located in the garage.

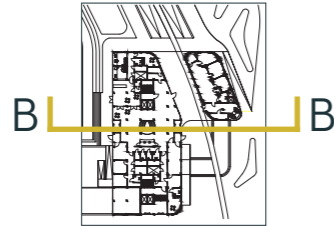


SECTIONS | 1:250

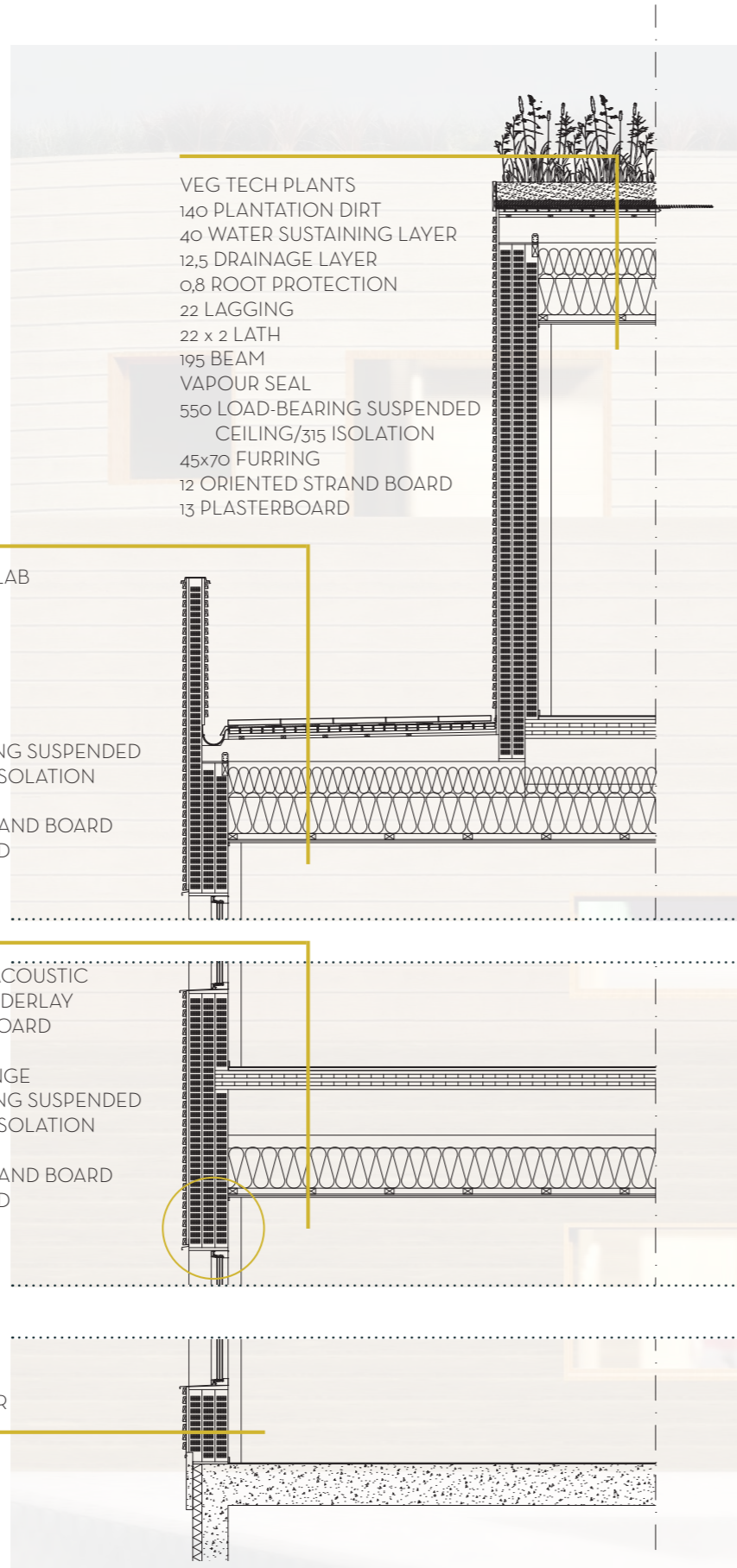
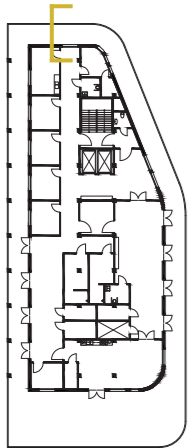
Section A - A cuts along the western corridor and views towards the central staircase that continues up to the 3rd floor. On the 4th floor we look through the examination/therapy rooms and the large social space, as well as the terrace in the south. Below ground the garage ramp is visible.



Section B - B cuts through the intermediate landing of the central staircase, looking north. On level 1 the large shared waiting room and the entrance windbreaks are visible. On the upper levels we see the view along the corridors, and the terrace that encircles the rehabilitation centre on level 4. Outside the building, the connection with the street level through different levels is visible.



DETAILED SECTION | 1:50



FACADES | 1:250



FACADE EAST

The wooden facades have rounded corners in all directions. The dainty cladding is oiled with three different pigmentations, from dark to light, to give the impression that the building dissolves into the air. The quadrate windows are drawn into the facade.



FACADE SOUTH



FACADES | 1:250



To the west, a glass envelope protects the building from the winds. The facade on this side is more strict than the other three, giving a wink to the new city areas emerging on Pottholmen.

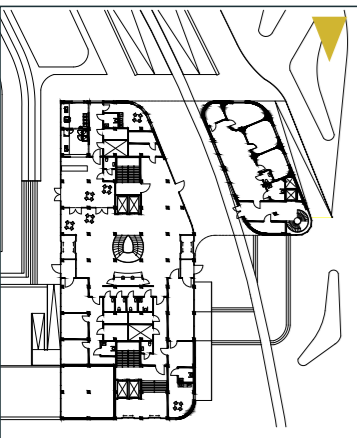
FACADE WEST



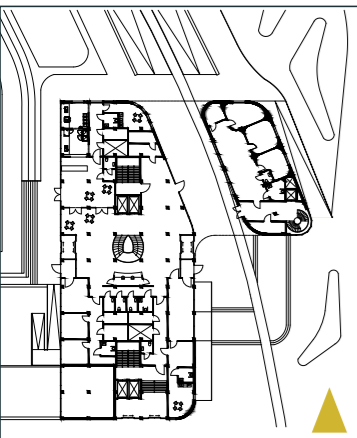
FACADE NORTH



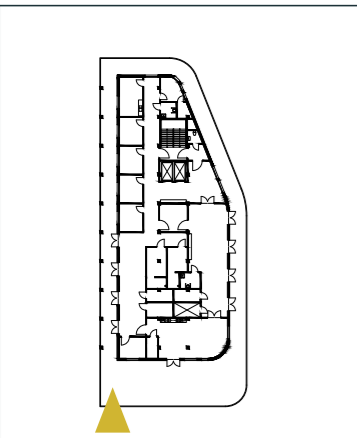
PERSPECTIVES



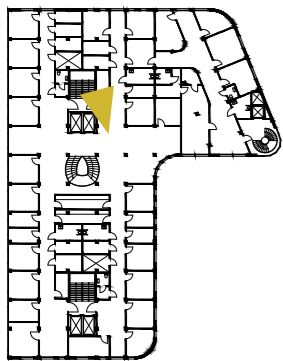
LOOKING SOUTH from Kungsleden, the view still offers green elements and the terraces - both on the ground and in the new volume - creates a gentle meeting between the new building and Fribergsska huset.



LOOKING NORTH towards the open space between Friberg'ska huset and the new building, the terraces and the roundes corners create an interesting dynamic. Warm light from the Health Care Centre and the Child Health Care Centre enlightens the passage through the building.



THE REHAB CENTRE on the fourth floor offers a terrace that circulates the facilities. The terrace can be used as part of the rehab training, and generous doors open up to the outside from the gym, conference room and social space.



THE WOMEN'S HEALTH CARE CENTRE has a small waiting room for those who need a more quiet space to wait. The corridors run from north to south in the building and connects the heart of the building with the outside in both directions.



HEALTHY INSIDE - HEALTHY OUTSIDE
SAMAN ALIRAMAEI & KRISTIN ORETORP