

INTRODUCTION

The project is situated in Frihamnen, a stone's throw away from the city centre. Frihamnen is a former industrial area which is being redeveloped to celebrate the Gothenburgs Jubilee in 2021. The municipality have developed a masterplan in which our plot is included in the first round of construction.

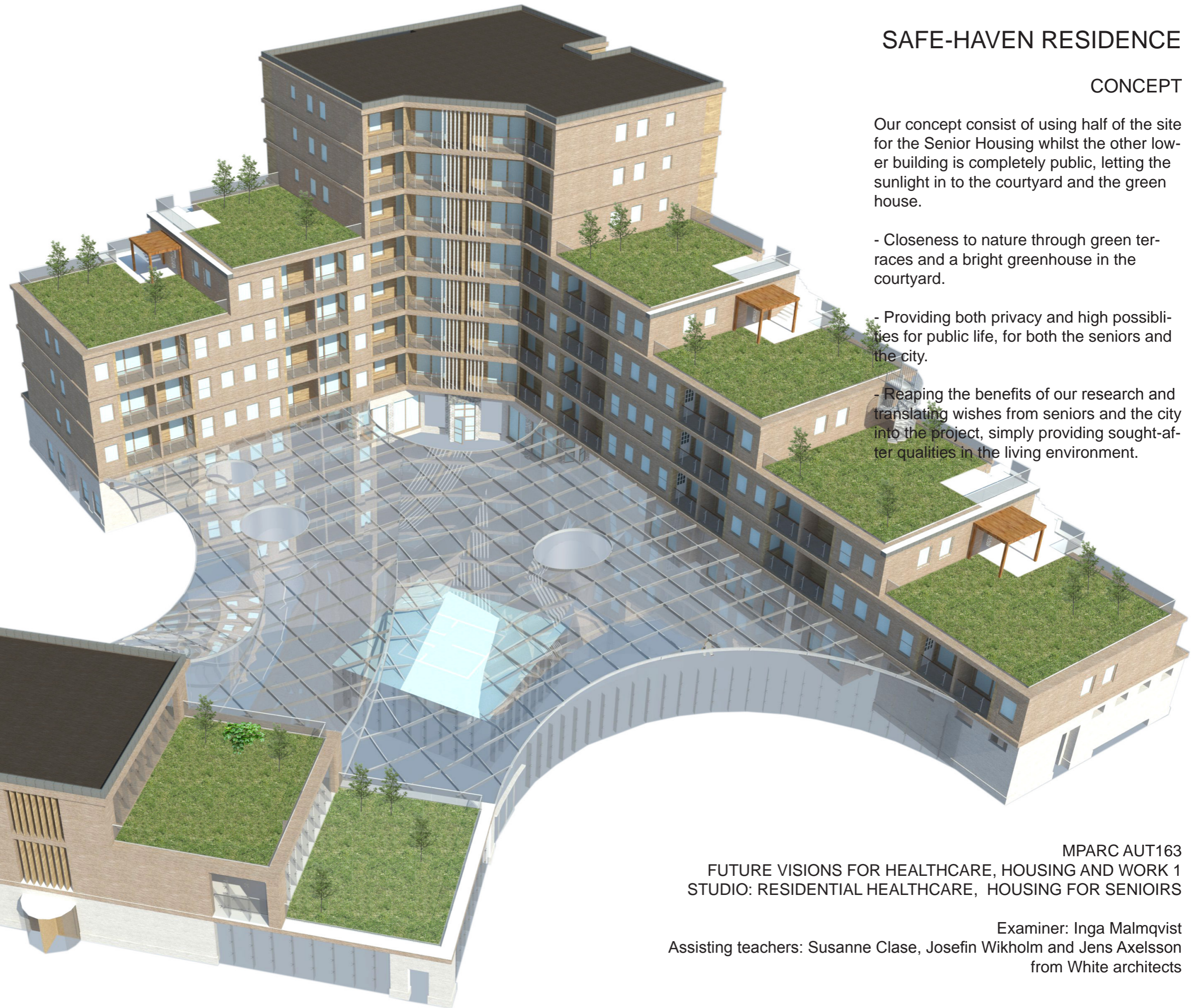
As the number of seniors increase rapidly in Europe and in Sweden, surely the challenge for us lies in carefully providing functional architecture infused with rich qualities for our elderly.

Thus, in our design studio, we have been focusing on developing a "Safe-Haven Residence", a housing type inbetween regular and nursing home. Staff will be there at times, but not all day and night like in nursing homes.

In our project, we aimed towards applying much of the feedback that we got from our visits at other housing for elderly and through interviews with seniors, where we found out more about their dreams and visions of what type of environment they wished to have around themselves. We learned that it exists a strong fear of loneliness, the wish to share spaces but at the same time keeping privacy, possibility to sustaining an active lifestyle and to meet new people through both inviting and visiting.

From this grew a willingness to provide a safe and pleasant environment with high possibilities to interact with both familiar and new faces.

From this grew our concept of incorporating basic human needs in our project, such as functional measurements, sunshine, views, pleasant climate, public life and privacy.



SAFE-HAVEN RESIDENCE

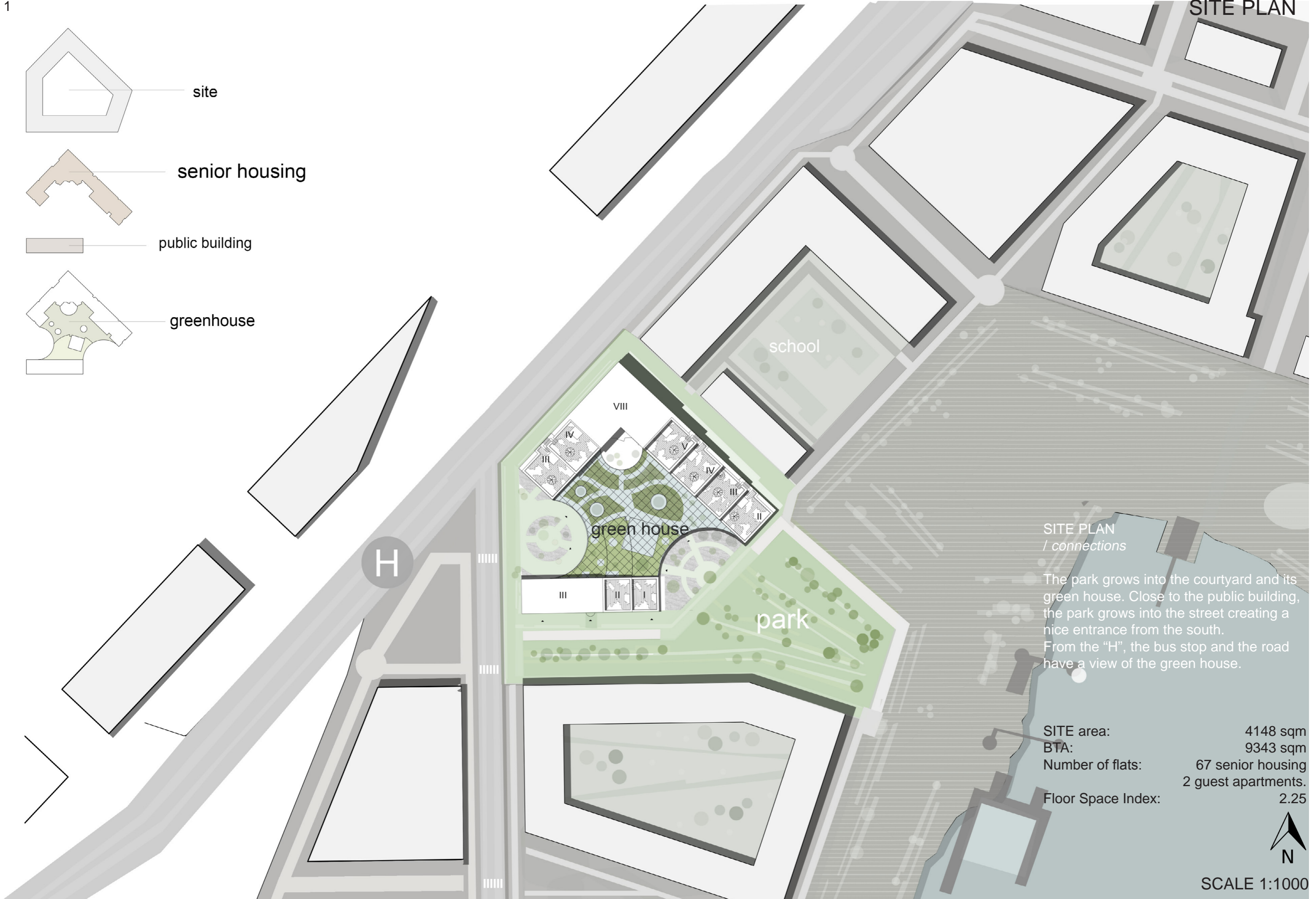
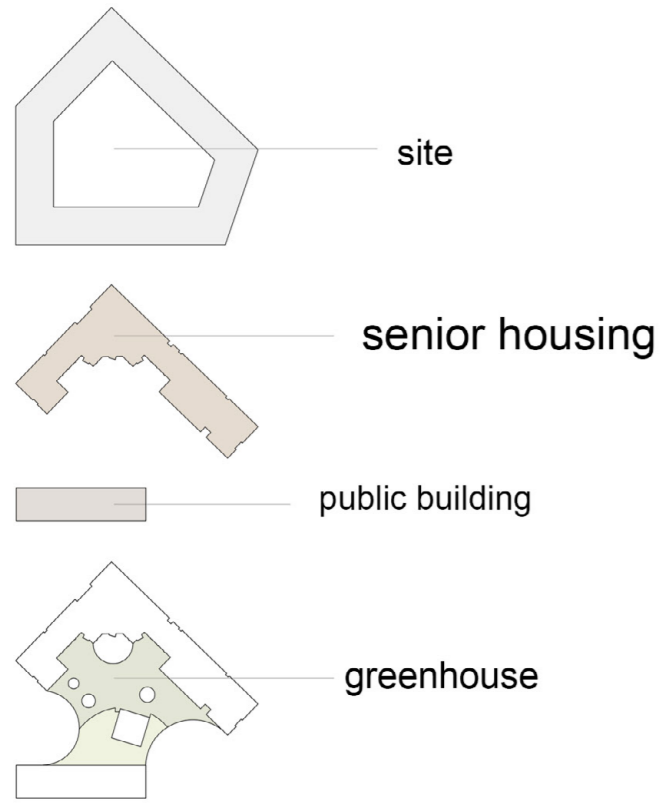
CONCEPT

Our concept consist of using half of the site for the Senior Housing whilst the other lower building is completely public, letting the sunlight in to the courtyard and the green house.

- Closeness to nature through green terraces and a bright greenhouse in the courtyard.
- Providing both privacy and high possibilities for public life, for both the seniors and the city.
- Reaping the benefits of our research and translating wishes from seniors and the city into the project, simply providing sought-after qualities in the living environment.

MPARC AUT163
FUTURE VISIONS FOR HEALTHCARE, HOUSING AND WORK 1
STUDIO: RESIDENTIAL HEALTHCARE, HOUSING FOR SENIOIRS

Examiner: Inga Malmqvist
Assisting teachers: Susanne Clase, Josefin Wikholm and Jens Axelsson
from White architects



SITE PLAN / connections

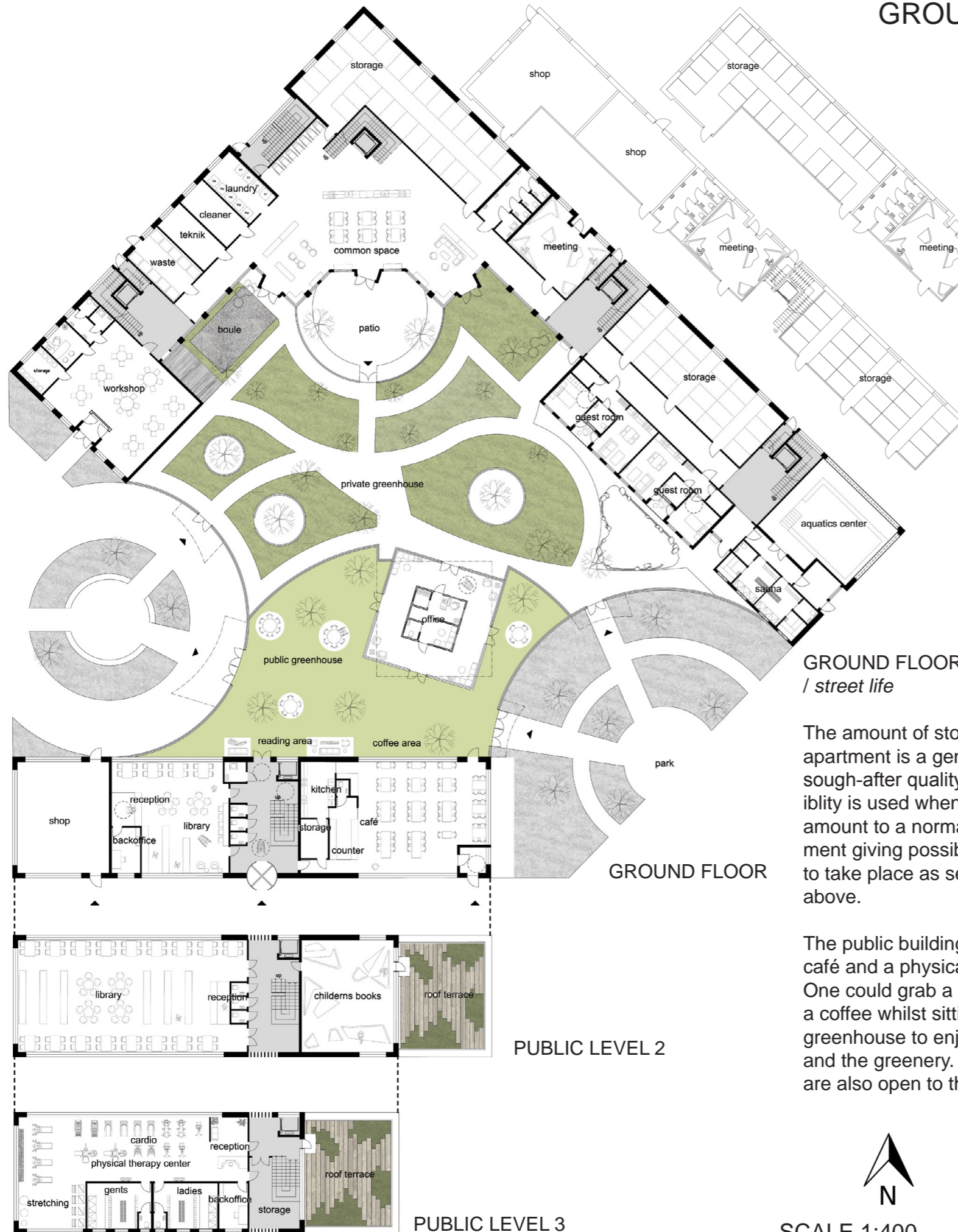
The park grows into the courtyard and its green house. Close to the public building, the park grows into the street creating a nice entrance from the south. From the "H", the bus stop and the road have a view of the green house.

SITE area:	4148 sqm
BTA:	9343 sqm
Number of flats:	67 senior housing 2 guest apartments.
Floor Space Index:	2.25



SCALE 1:1000

GROUND FLOOR



GROUND FLOOR / street life

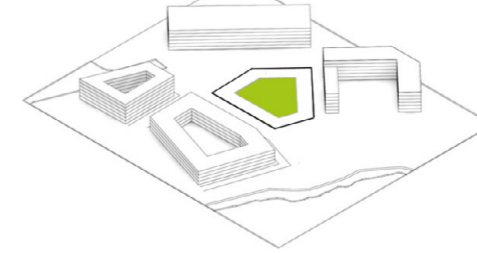
The amount of storage for each apartment is a generous 6.5 sqm, a sought-after quality, however flexibility is used when reducing the amount to a normal 3 sqm/apartment giving possibilities for shops to take place as seen in the plans above.

The public building has a library, café and a physical therapy centre. One could grab a book to read or a coffee whilst sitting in the public greenhouse to enjoy the climate and the greenery. The two terraces are also open to the public.

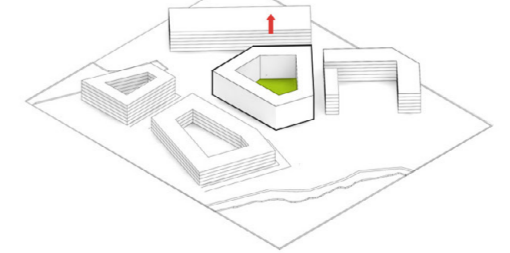


SCALE 1:400

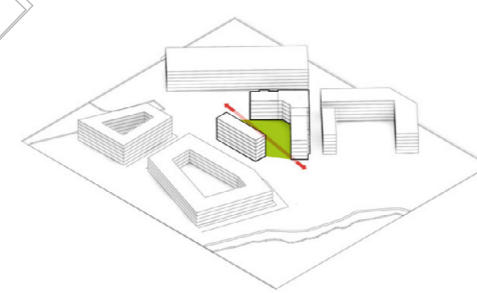
1 site boundary



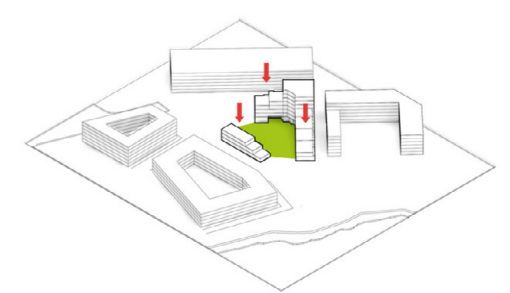
2 massing



3 openings



4 terraces



5 green house

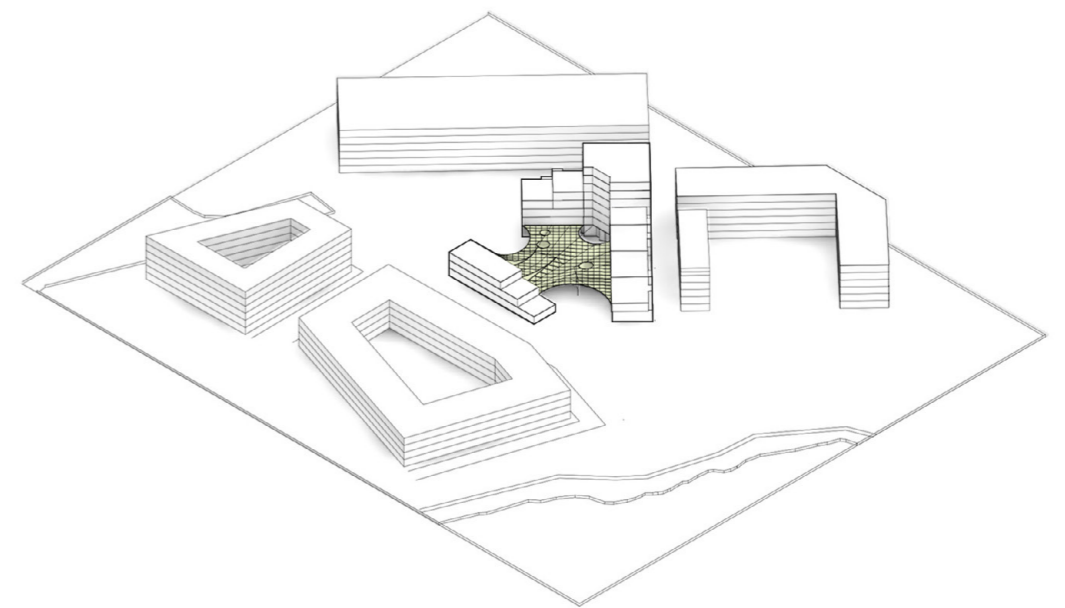


DIAGRAM / connections

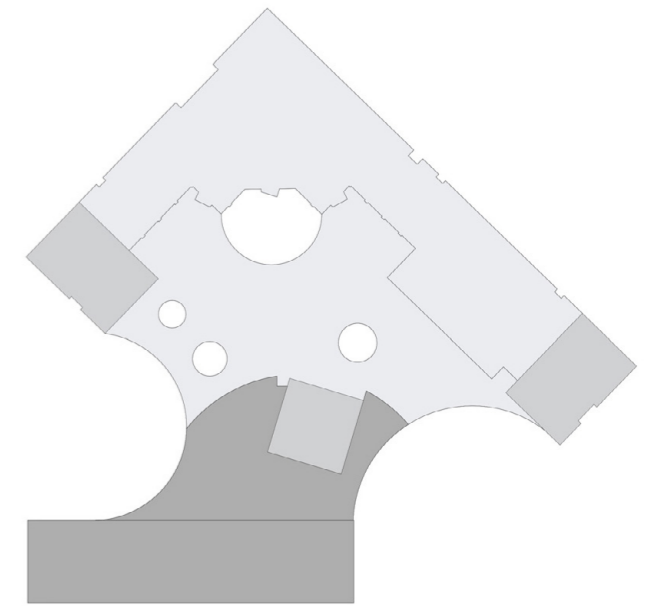
The diagrams show how the massing evolved during our work flow, again, we decided to design two building blocks, one for the senior housing and the other for public life. Closeness to greenery and providing views were also central aspects in our design.

PRIVATE SPACE



PRIVATE (sqm)
 Waste room: 21
 Laundry: 24
 Cleaner room: 16
 Teknik: 16
 Children (meeting room): 38
 Storage: 435 (6.5 sqm each apartment)
 2 guest apartments: 43 sqm each
 Common space: 110
 Toilets ground level: 17
 Private green house: 914

SEMI-PRIVATE
 Workshop: 122
 Aquatic center : 74
 Office: 25



GROUND FLOOR
 / private, semi-private, public

The heart of the senior housing is the common space, leading to a patio and also directly into the green house. Close to the common space is other accommodations such as laundry room and a meeting room which can be used for smaller gatherings or to invite students from the schools closeby to socialize and learn more about the greenery in the green house.

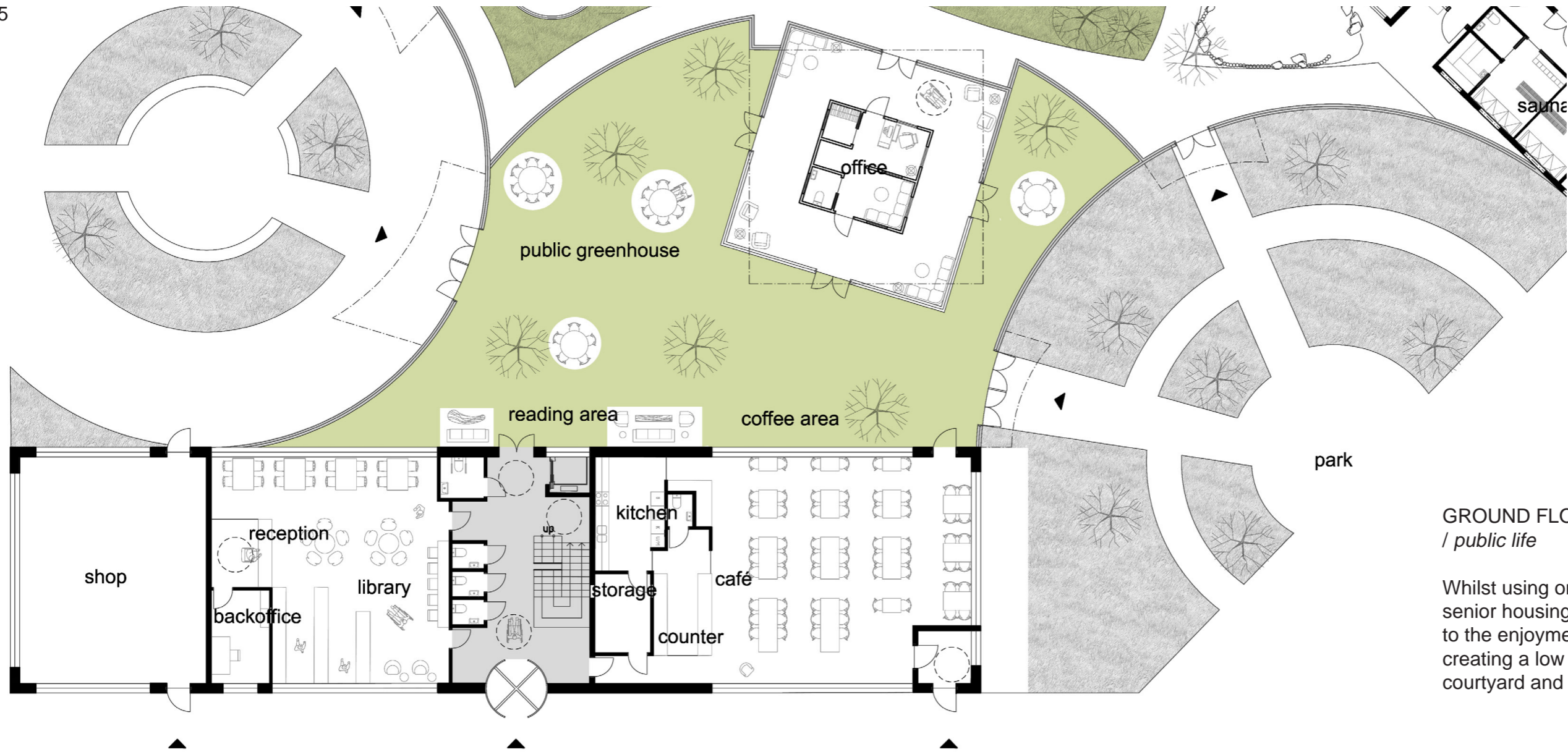
The corners in the senior housing block consists of semi-private zones, strategically places in the corners to be open to the public, they consist of a workshop and an small aquatics centre with a warm water pool and saunas.



SCALE 1:200



PRIVATE PATIO



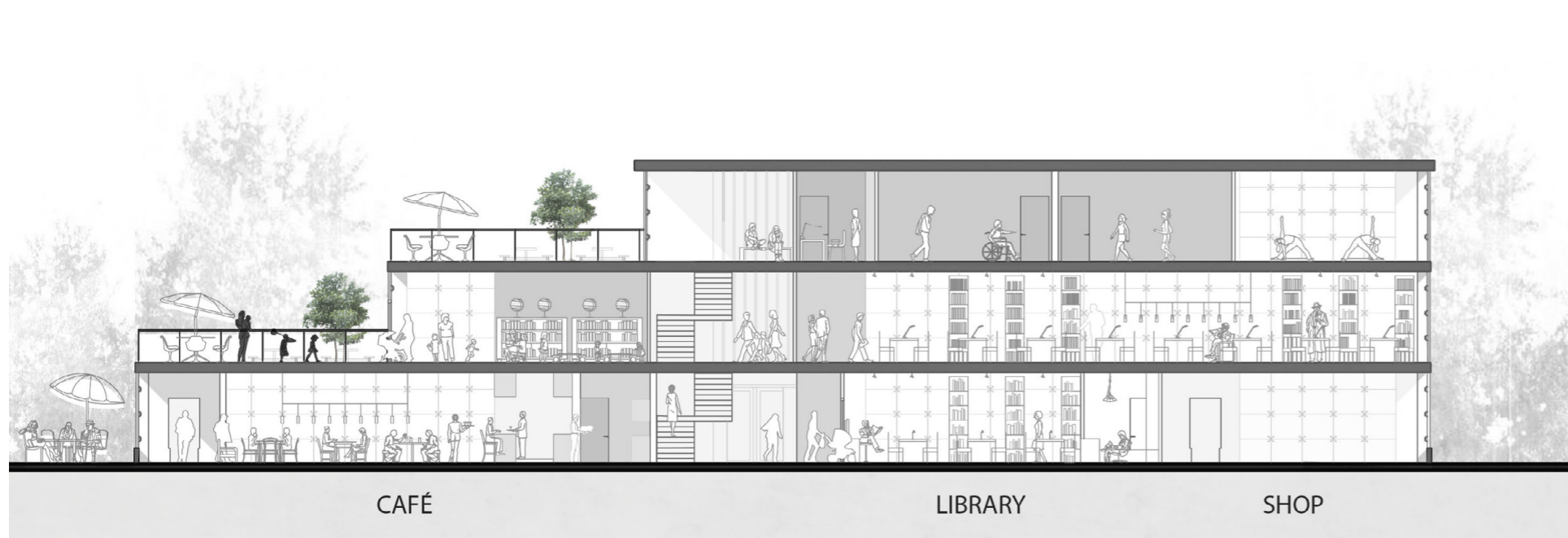
PUBLIC SPACE

PUBLIC (sqm)	
Shop:	77
Café :	155
Library:	375
Phycial Therapy:	193
Public green house:	317

GROUND FLOOR
/ public life

Whilst using only one side of the site for senior housing, the other is left for public life to the enjoyment of the seniors and the city, creating a low building, the sun reaches the courtyard and its green house.

SCALE 1:200



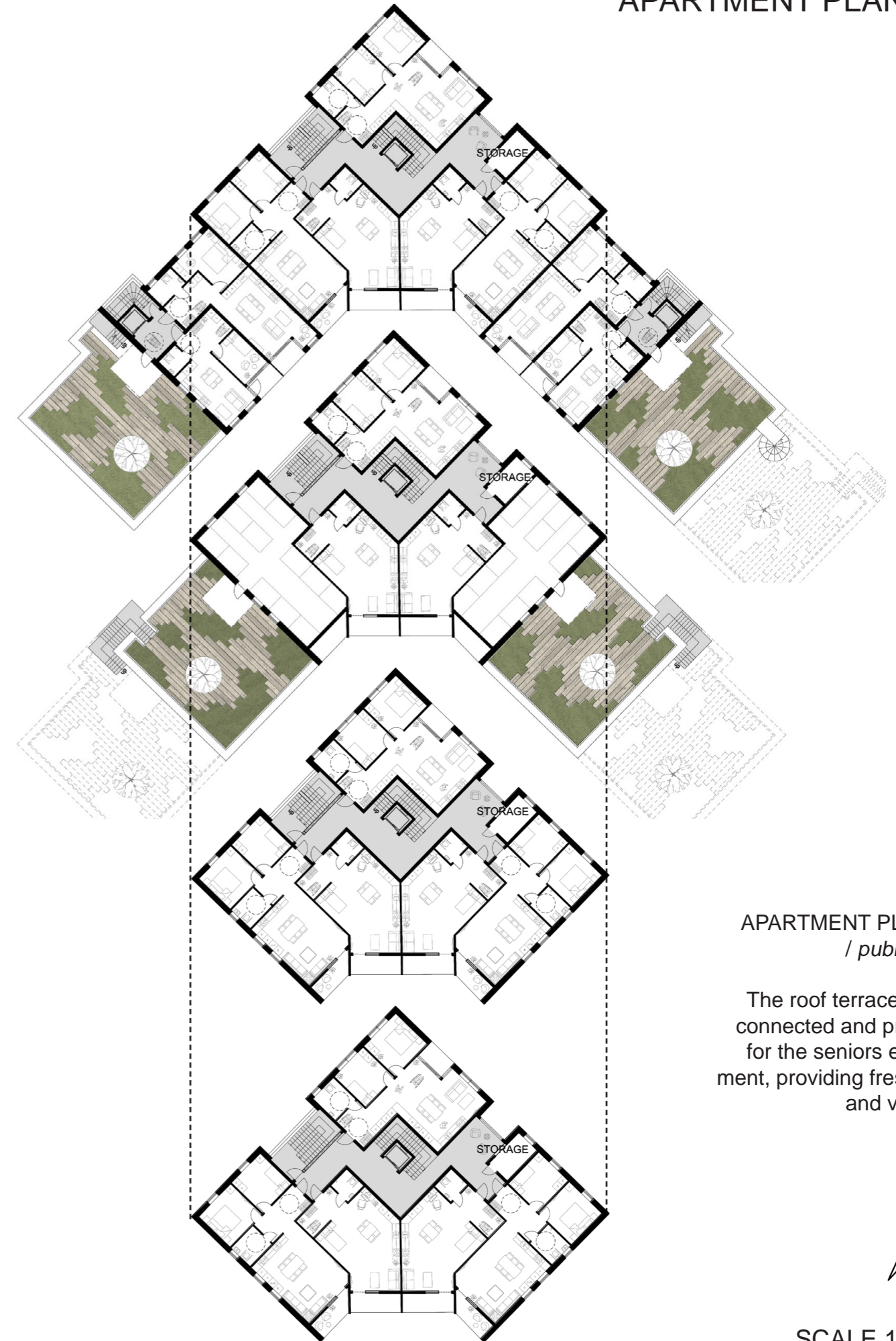
SECTION
/ public life

The public buliding has acitvities (café, library and physical therapy center) which are in line with the seniors interest and the people of the city. Here, the seniors can come and meet new people and enjoy a cup of coffee or read a book amongst other city people.

SCALE 1:200



PUBLIC GREEN HOUSE



APARTMENT PLANS
/ public life

The roof terraces are connected and private for the seniors enjoyment, providing fresh air and views.



SCALE 1:400



APARTMENT VIEW

CORNER UNIT



QUALITIES

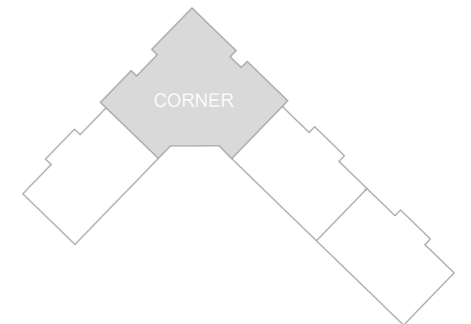
/ generous amount of squaremeters in the hall way making it easy to move around.

/ possibility to look out throuh an window whilst laying in the bed.

/ balcony "inside" the apartments making the experience of being out on the balcony secure and protected from harsh wind. Also spreading light into the apartment.

/ open and modern plan with kitchen and living room created in to a single room providing a spacious room.

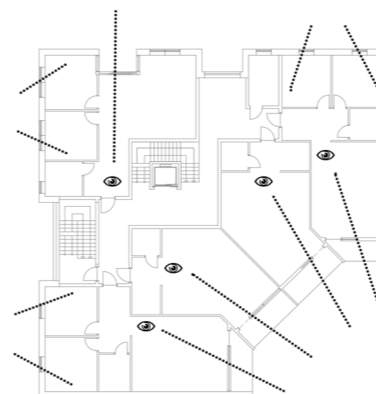
/most balconies facing south to increase sunshine.

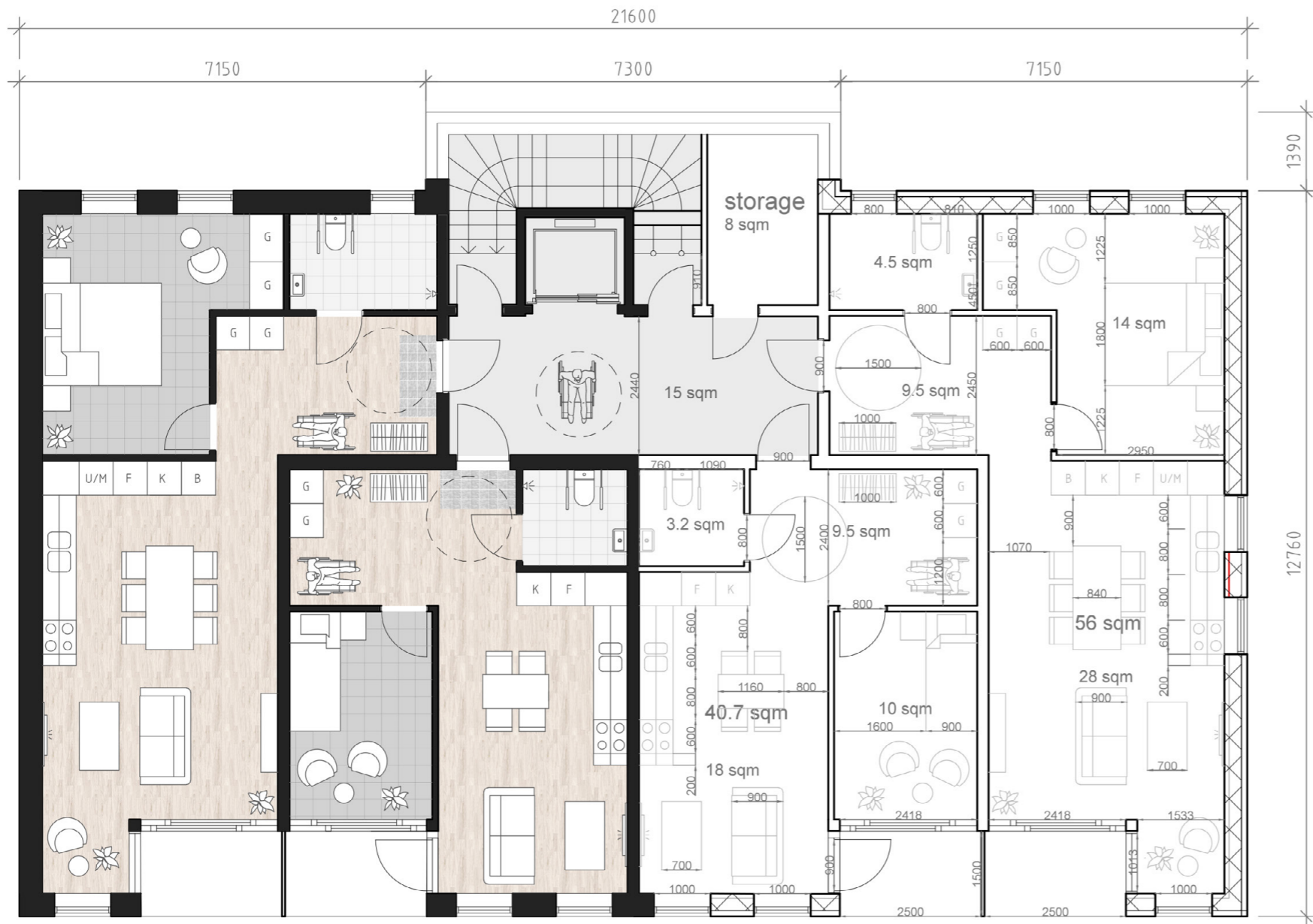


CORNER UNIT

/ connected to 5 apartments

All apartments are divided in a *semi-private* and *private* zones making it easy for staff to enter and give aid in the bathroom or bedroom, which is separated from the private living room and kitchen. The apartments are of 3 different types with measurements for normal standard of accesblity according to Swedish Standards Institiute (SIS) .





QUALITIES

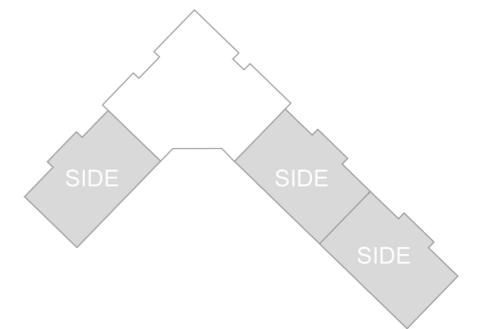
/ generous amount of squaremeters in the hall way making it easy to move around.

/ possibility to look out thurgh an window whilst laying in the bed.

/ balcony "inside" the apartments making the experience of being out on the balcony secure and protected from harsh wind. Also spreading light into the apartment.

/ open and modern plan with kitchen and living room created in to a single room providing a spacious room.

/all balconies are facing south for increased sunshine

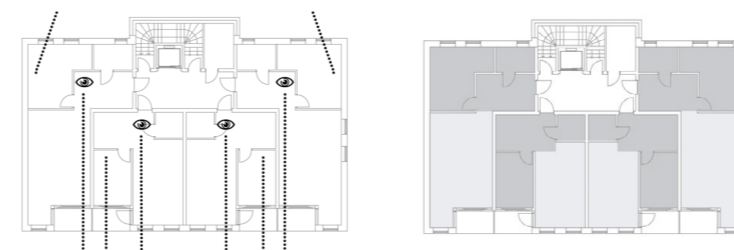


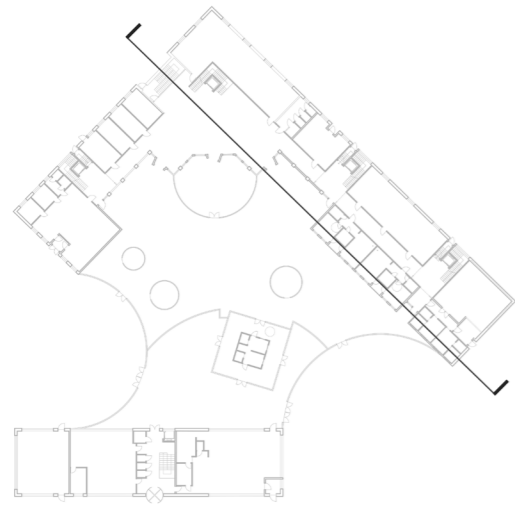
SIDE UNIT

/ connected to 4 apartments

The apartments are of 2 different types.

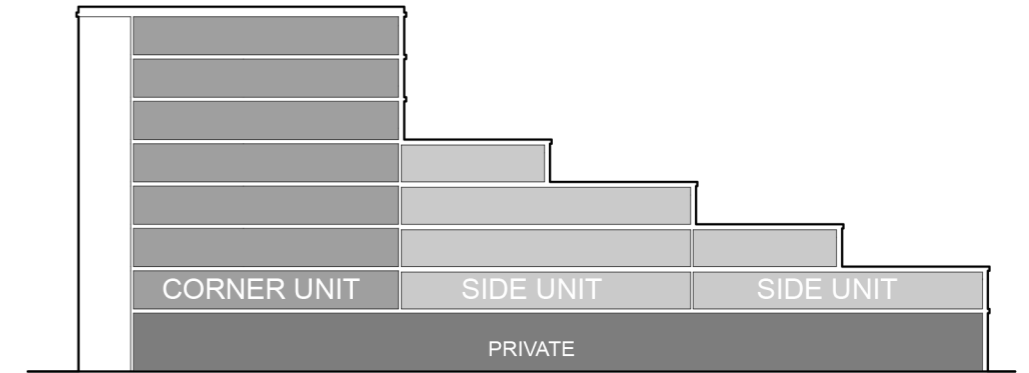
On the left, mirrored apartments with all measurments, showing the number of squaremeters of each flat.





SECTION
/ configuration and life

Section through the private part, the senior housing showing the apartments and accommodations on ground level along with the characteristic shape with roof terraces.



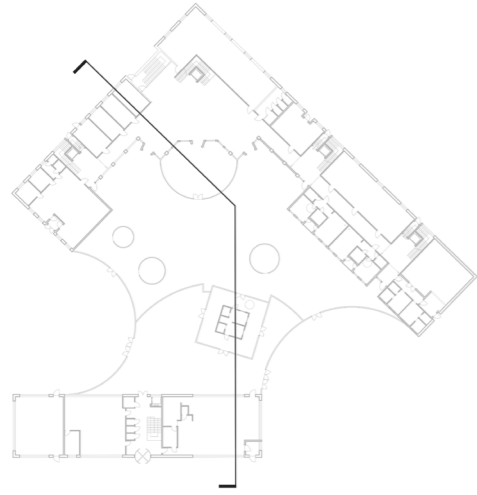
COMMON SPACE

GREEN HOUSE

GUEST APARTMENTS

SAUNA

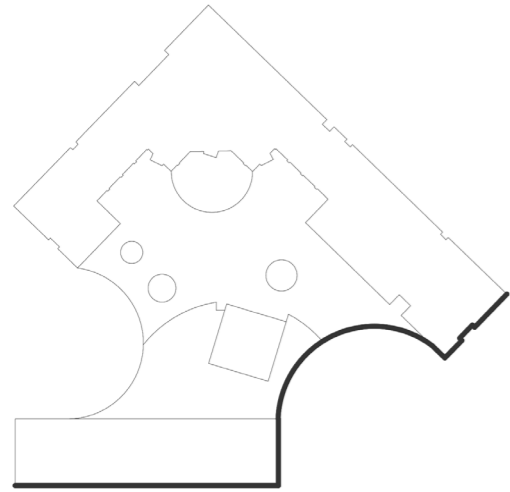
SCALE 1:200



SECTION
/ from public to private

Section showing the relationship between the public and private areas. Since the building is experienced from eye-level, a greenhouse spreads its wing in the courtyard, providing shelter, closeness to greenery and pleasant environment and climate.



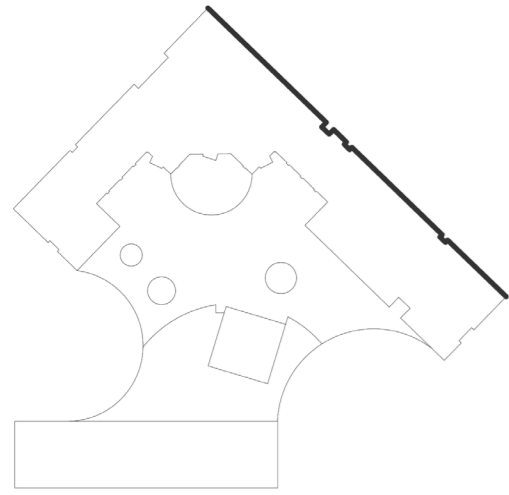


WEST FASCADE

WEST FASCADE */ materials*

Brick, wood and glass. A play of heavy, natural and light materials. The facade shows how the concept of the building merge and gives one expression on the whole, creating a cohesive sense.





NORTH FASCADE
/ materials

From each angle, the building is experienced differently, here creating a strong characteristic expression with transparency and glass in the traffic cores leading all the way up to the roof terraces.

