

GIBRALTARTORGET

Along Gibraltargatan arises a new Safe-haven (trygghetsboende), Gibraltarorget. A Safe-haven that stands out from the crowd. Along Gibraltargatan there are a variety of commercial premises, which offer a variety of services and goods, but along the long street, you can't find a hub. Gibraltarorget is the hub along this long street. In the square there are a number of shops and a restaurant offering outdoor-dining in southern direction hot summer days.

The common areas are something that is important for seniors to engender comfort, safety. These spaces provide the opportunity for social contacts, to move and to get an environmental change. Gibraltar Square offers a variety of common areas. A common room, roof terrace adjacent to the common room, a workshop, a large private courtyard, a roof garden and last the access balcony with semi private balcony.

Gibraltarorget offers 50 warm, bright and fully accessible apartments. 25 bigger two room apartments for two persons and 25 smaller two room apartments for one person. There are also two guest apartments that relatives and friends can rent when they wish to sleep over. All apartments have both east and west facing windows, balconies in southwest, a semi private balcony in the eastern direction and storage on the same floor as the apartment.



Concept

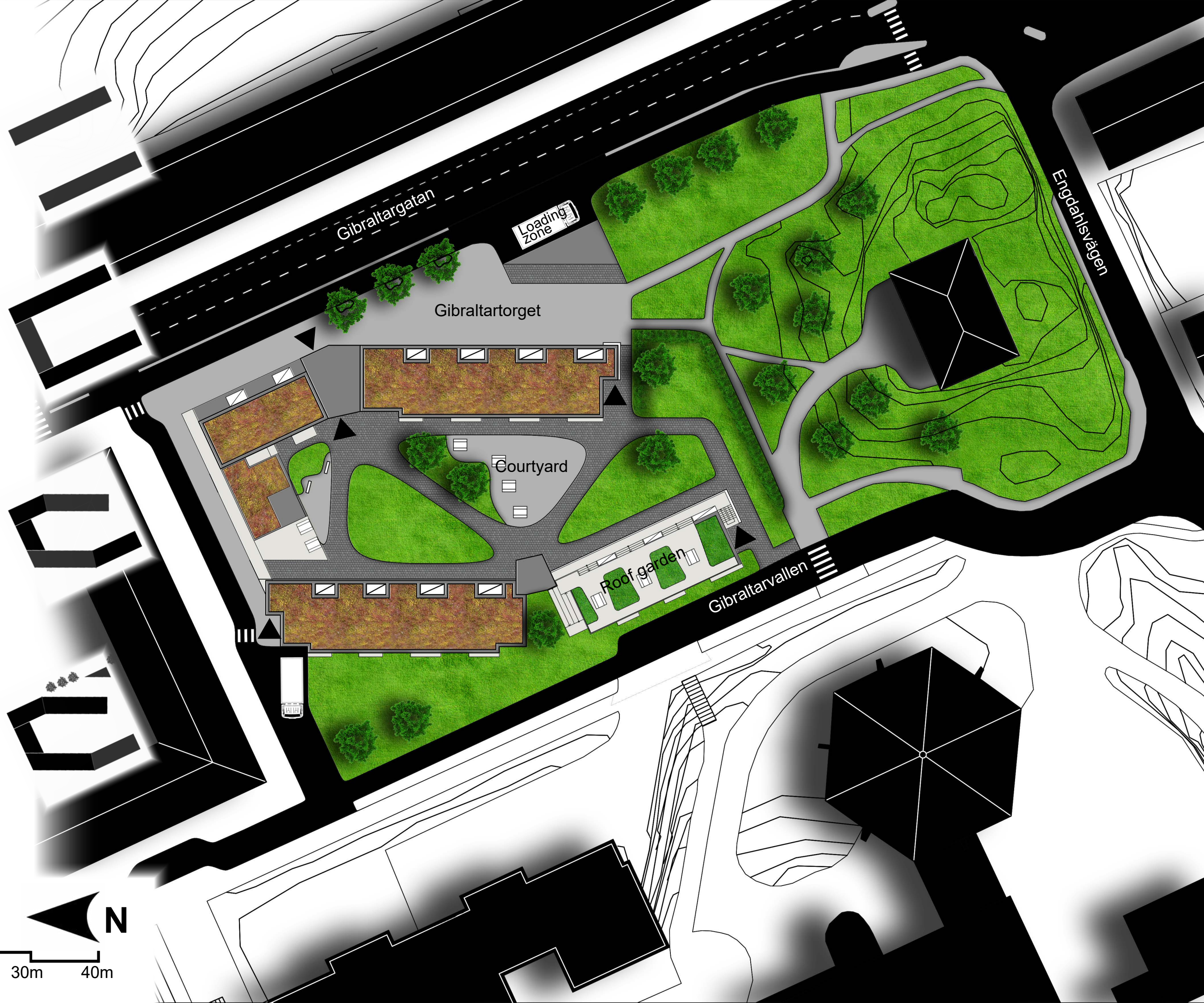
Two lamellar buildings five storeys high (15m) each, are placed in the same direction as Gibraltargatan so that all apartments gets both morning and evening sun. At the same time the eastern lamella make the streetscape clearer (Gibraltargatan).

A building volume two storeys high (6,5m) are placed between the lamellar buildings to shield off the streets around at the same time create a private courtyard with the direction towards the green area in the south.

Parts of the lamellar buildings are bent toward south to maximize the amount of light from west and east and get rid of the southern sunlight into the apartments. The bending of the lamellar buildings also make the possibility to create a square in east with a clear direction toward the green area in south and a green area in west.

The number of floors is reduced to four storeys in the southern part of the western lamella to increase sunlight into the courtyard and a roof garden is created on the lowered part of the lamella. In east, a shelter roof and a number of trees are placed along Gibraltargatan to maintain the streetscape (Gibraltargatan) and to shield off the traffic from the square.

Site plan 1:500





- Access balcony & entrances
- Common areas
- 2 room APT. 58,9m²
- 2 room APT. 48,9m²
- Guest APT. & Staff area
- COMP. areas (storage if not defined)
- Public premises (store if not defined)

1st. plan 1:200





- Access balcony & entrances
- Common areas
- 2 room APT. 58,9m²
- 2 room APT. 48,9m²
- Guest APT. & Staff area
- COMP. areas (storage if not defined)
- Public premises (store if not defined)

2nd. plan 1:200





- Access balcony & entrances
- Common areas
- 2 room APT. 58,9m²
- 2 room APT. 48,9m²
- Guest APT.& Staff area
- COMP. areas (storage if not defined)
- Public premises (store if not defined)

3rd. plan 1:200





- Access balcony & entrances
- Common areas
- 2 room APT. 58,9m²
- 2 room APT. 48,9m²
- Guest APT. & Staff area
- COMP. areas (storage if not defined)
- Public premises (store if not defined)

4th. plan 1:200





- Access balcony & entrances
- Common areas
- 2 room APT. 58,9m²
- 2 room APT. 48,9m²
- Guest APT. & Staff area
- COMP. areas (storage if not defined)
- Public premises (store if not defined)

5th. plan 1:200





Eastern facade 1:200



Western facade 1:200



Section A-A 1:200



wall materials



The facades outer shell is made of vertical black-stained pine panel, creating a rough feeling.



The facades inner shell is made of horizontal bright-stained pine panel. The bright pine panel gives a warm home feeling while separating the private and public areas.



Balconies, access balconies and stairwells are in concrete, giving a heavy expression that violates the palpable wooden facade. The railings are made of semi-transparent black-stained pine, the heavy concrete is oozing out through the railings.



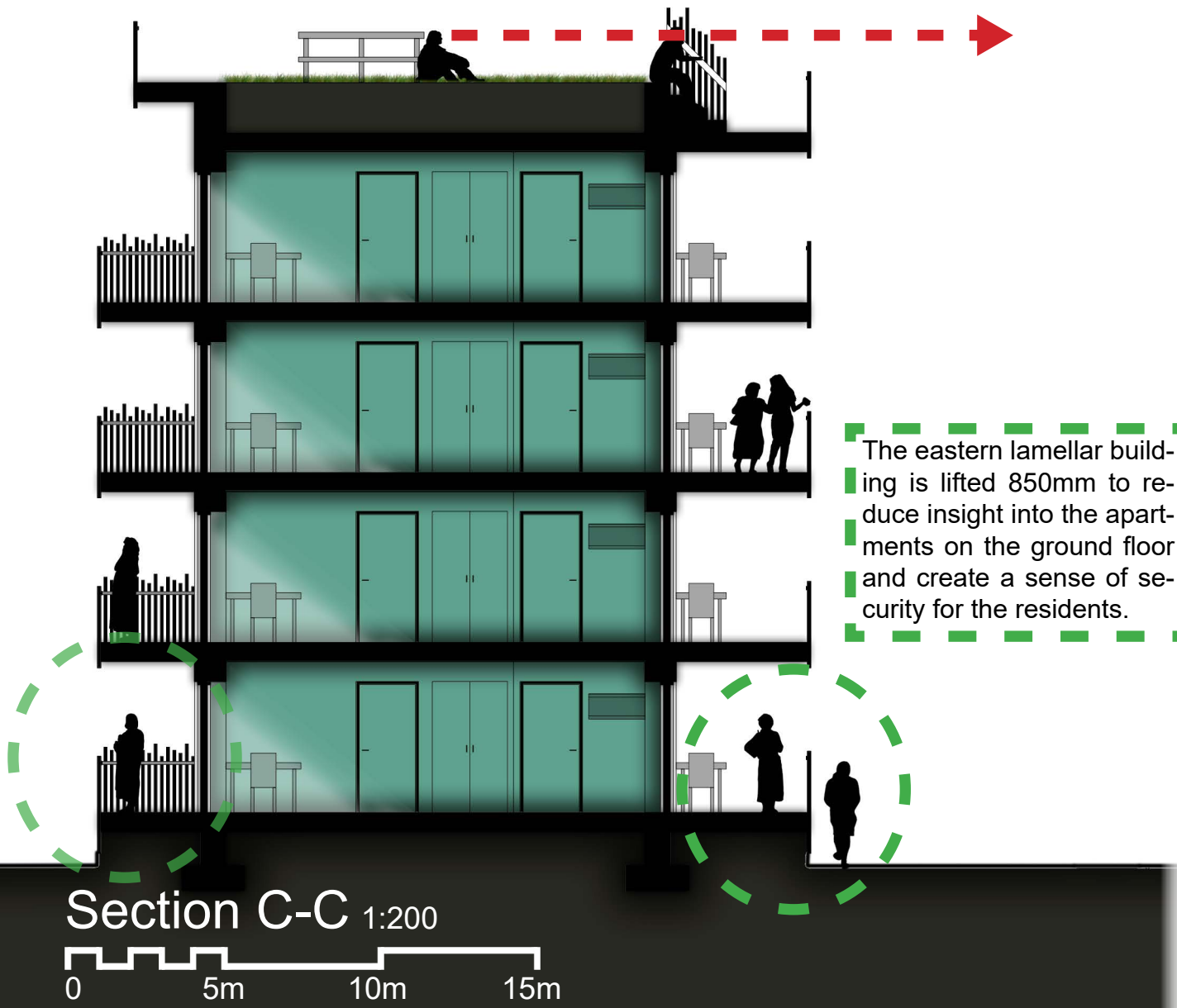
The bedrooms, part of the living rooms and parts of the common room are in white stained pine to again give the cosy warm feeling all home needs.



Section B-B 1:200

0 5m 10m 15m

To create possibility to plant on the roof garden, the terrace is raised 800mm above the access balcony. The raising of the terrace also gives the opportunity to look out towards Gibraltargatan above the railing when sitting down and enjoying the sun or planting something.



The eastern lamellar building is lifted 850mm to reduce insight into the apartments on the ground floor and create a sense of security for the residents.

Where there is a need for light shaft, there is instead a small planting area to reduce insight into in the apartments.

Access balconies are located on the eastern part of lamellar buildings, this contributes to a reduction of morning light into the apartments through the kitchen window. In order to again increase direct sunlight, I have created a light shaft outside the kitchen window through the access balconies. The shaft also reduce insight into the apartments, since the shaft narrows the walkway and provides a clearer direction of movement for the people walking out there.



The apartments

Once you open the entrance door there is a clear sightline through the apartment out through the glazed balcony window. There is also a clear sightline from the balcony through the windows out towards the access balcony. Bathrooms are placed near the bedrooms to reduce the risk of falling during the night. In the apartments there are plenty of storage space and there is space for tumble dryer and washing machine in the bathroom. There are also storage outside the apartments on the same floor level.

The larger apartment is for two persons. There is a clear division between the private parts and common parts in the apartment. From the hallway there is a direct connection to the kitchen through the sliding door, you can close the door if you want it a little more private in the kitchen and to avoid looking into the bathroom while cooking. It is also possible to separate the kitchen from the living room if you wish. The kitchen is equipped with a raised dishwasher and the oven is located in a high cabinet. If you are wheelchair bounded and need to pull out the under cabinets, there are still enough kitchen storage.

The smaller apartment is for one person. Similar to the larger apartment the oven and the dishwasher raised, but are located in the same cabinet. Kitchen and hallway are also separated to avoid looking into the bathroom.

Guest apartments and staff areas

As the apartments, there's also a clear sightline from the entrance door through the window. There are semi private balcony as the apartments. The staff area is located adjacent to the stairwell so the staff can quickly get to the residents needing help.



2 room APT. 58,9m² for 2 persons

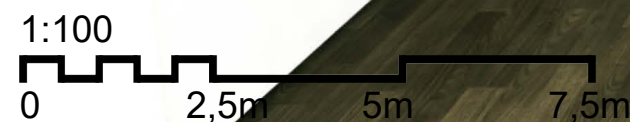
alt. layout with partition

2 room APT. 48,9m² for 1 person



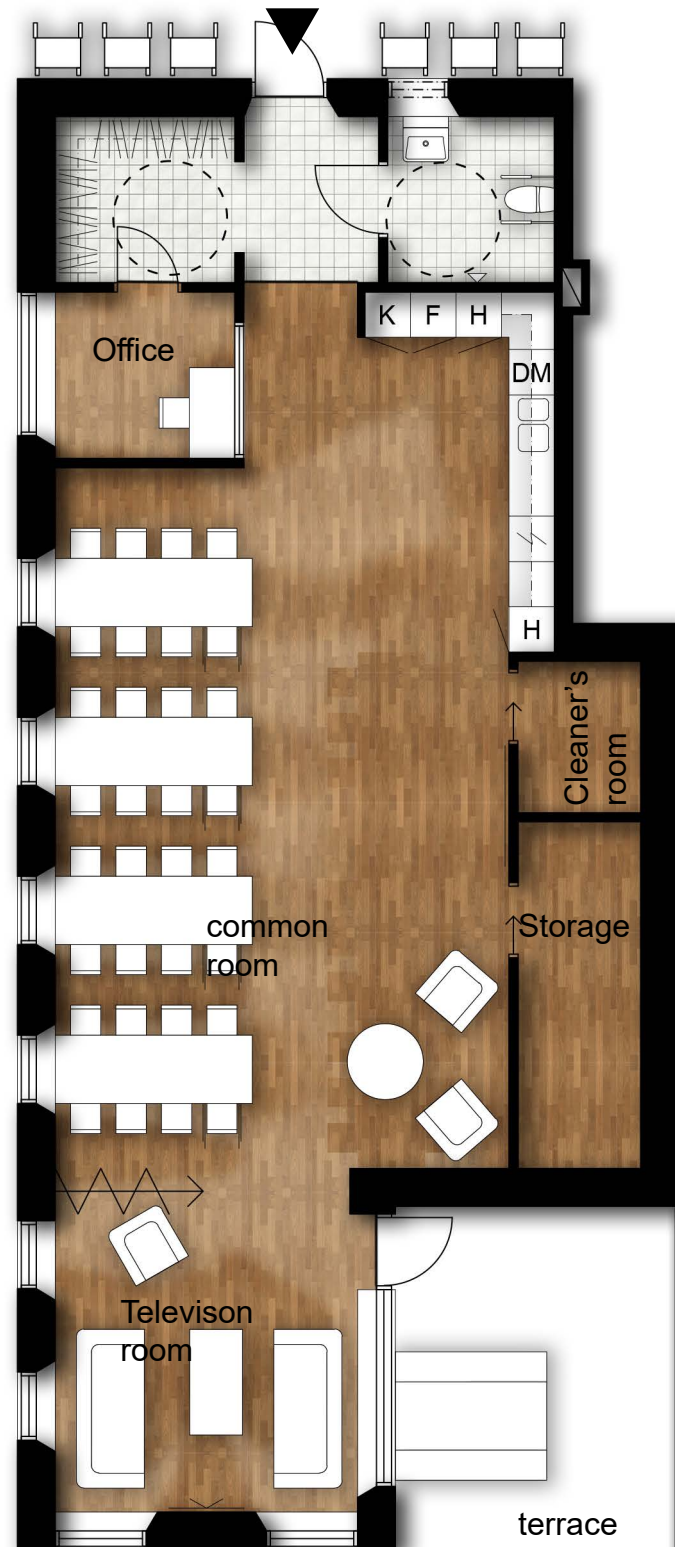
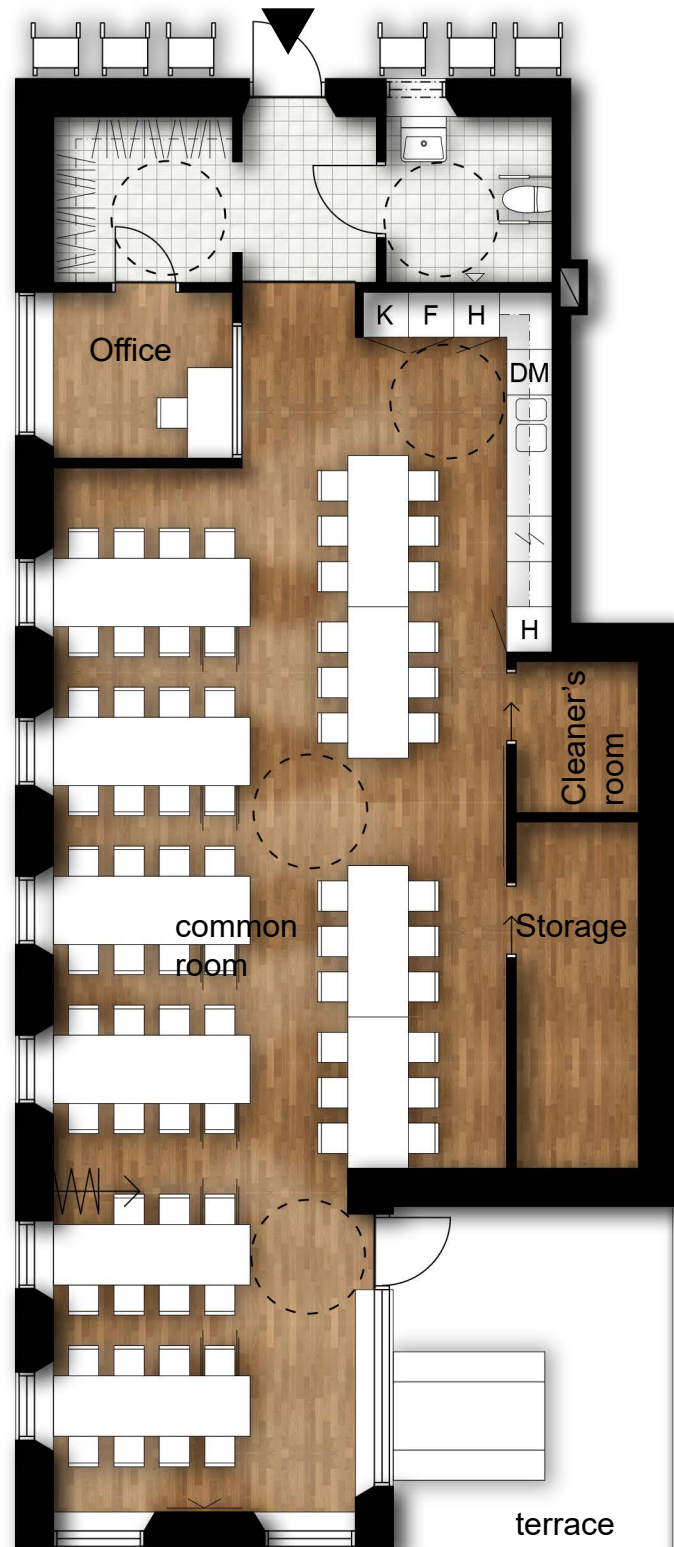
Guest APT. 24,0m²

Staff area 35,4m²



Rendering taken from the balcony door towards the kitchen and entrance

Common space 117,3m²



As the apartments there is room for walkers outside the entrance door, and once you enter through the entrance door there is a clear line of sight through the common space. The total area of the common space is 117,3m², but the common room including the kitchen is only 79,6m². The room can be furnished various ways. When all the residents want to gather and have party or dinner, the room can be rearranged for 80 chairs. Projector screen can be hung on the wall between the storage and the room for cleaners. The common room can also be split into two separate smaller rooms with the help of the foldable wall, a television room and a smaller common room. Directly adjacent to the common space is the terrace.

