

# Bräcke Homes

Group 8: Agnes Leo, Anisia Gorchkov, Saman AliRamaei

AUT164 - Space for Healthcare, Housing & Work MPARC

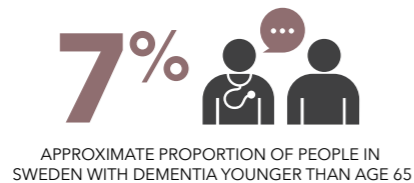
# INTRODUCTION

## BACKGROUND

Bräcke Diakoni is a non-profitable private foundation established in 1923. Today, Bräcke Diakoni has about forty functions in the areas of healthcare, disability and elderly care - for instance health centers, rehabilitation, psychiatry, children's and youth activities and hospice.

The head office is located in Gothenburg, but their activities exist in many different locations in Sweden.

Bräcke Diakoni are about to develop their property for different kind of care but also other facilities.



## DEMENTIA

Dementia is pathological changes in the brain which affects memory and thought abilities. 130 000 - 150 000 people in Sweden suffer from dementia but almost 1 million people are affected along with relatives.

It is estimated that approximately 25,000 people fall ill each year. According to the National Board of Health estimates, as many as 185 000 people will have dementia in 2030 and approximately 250 000 people in 2050 (Demensförbundet, 2019).

## DEMENTIA VILLAGE

Elderly who live in assisted living have neither somatic diseases or dementia diseases and are not able to live in an ordinary home. People with dementia and somatic diseases have different needs in their living environment and care.

When suffering from dementia the daily life is greatly affected. Depending on the dementia disease you may be experiencing, you may have difficulty with memory, finding, performing various practical tasks or reading social rules. However, much can be done to preserve the remaining functions for as long as possible through support and stimulation.

The idea of this project is to create a living environment that has the qualities of a village and where people with dementia can live as normal as possible. The dementia village also interacts with its neighbourhood with public facilities.

## LOCATION ON SITE

On the project site today, there is a building that consist of "daglig verksamhet" and a dog-daycare. The building is in really bad shape and therefore hard to maintain, and will be demolished in the future.

We chose to place our project on the lower part of the site to keep as much as possible of the green structure and leave the upper part for future projects. We can also use the hill and nature as a border to create an enclosed garden.



Location of Gothenburg.



Location of Bräcke Diakoni in the city



Photo of the site.

# DEFINING INTENTIONS



## CREATING COMMUNITY

### COMMON AREAS

Creating spaces for social activities and interaction is important to improve the quality of life for elderly with dementia.

### CROSS-INTERACTION

A central aspect of this project includes integrating the elderly with people in the area, with focus on intergenerational interaction. It has a proven benefit as a dementia therapy method and is beneficial to the children in terms of their learning.



## FIT INTO CONTEXT

### INTEGRATION

The ambition for the housing complex to be integrated into the area is important in order to create the sense of a home.

### PREVENT ISOLATION

To de-institutionalise the building, the intention is to invite people into the public parts of the building, this to prevent isolation and enhance the daily interaction for the residents.

### NATURE IN FOCUS

The rich forest area that defines our site is an important factor and crucial part in the identity of the area. The green structure is also a big benefit for the well being of the residents, and a feature we want to use and emphasise on.



## MULTIPLE CHOICES

### NATURE

To work with the outdoor spaces and create various activities is a benefit for social interaction and meaning in the everyday life.

### SOCIAL SPACES

The ambition is to offer diverse common spaces, both in the units and in the public areas. This is important to enhance the interaction between residents in different units, but also create a circular flow in the building.



## QUALITY OF WORKPLACE

### GOOD WORK FLOW

The design of the building should enhance a great work flow and create a good environment for the staff. Here, the strategy is to eliminate possible dead ends and unviewable spaces.

### SPACES FOR STAFF

The aim in this project is not only to focus on the residents, but also on the staff who will work here. In order to create a good workplace, common spaces are integrated with the heart of the housing complex, where the staff can gather energy and socialize.

Strategies

ACTIVITIES FOR CHILDREN

EXTENDED UNITS

PROGRAMMED ACTIVITY SPACES

CREATE PATHWAYS IN THE AREA

DESIGN INCLUDING PUBLIC AREAS

ENVIRONMENT SHAPES BUILDING

DEFINE THE SPACES IN THE GARDEN

VERSATILE OUTDOOR SPACES

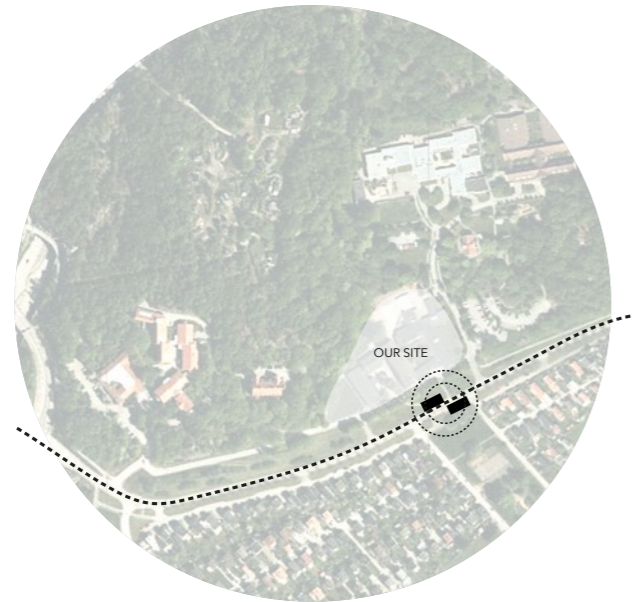
CREATE VARIOUS SPACES IN UNIT

WORK WITH ROUNDABOUTS IN UNIT

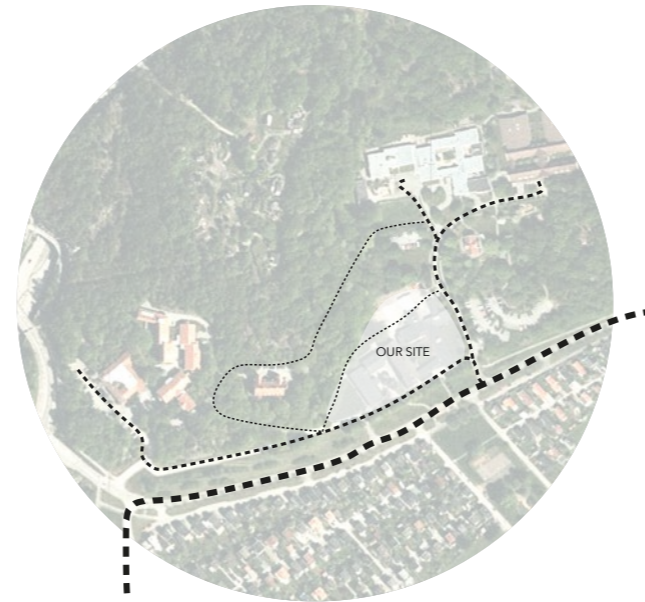
CREATE VARIOUS AND FUNCTIONAL SPACES FOR STAFF

# THE FEATURES OF THE SITE

General



**TRANSPORTATION**  
The bus stop is located conveniently close to our site and Bräcke Diakoni.



**ROADS OF IMPORTANCE**  
The linked roads and future expansion create a need for parking, yet making the current site accessible by car.



**CURRENT BUILDINGS**  
Bräcke Diakoni is located to the west from the project site. The current building that's there will be demolished. To the north is the kinder garden and the hospital.

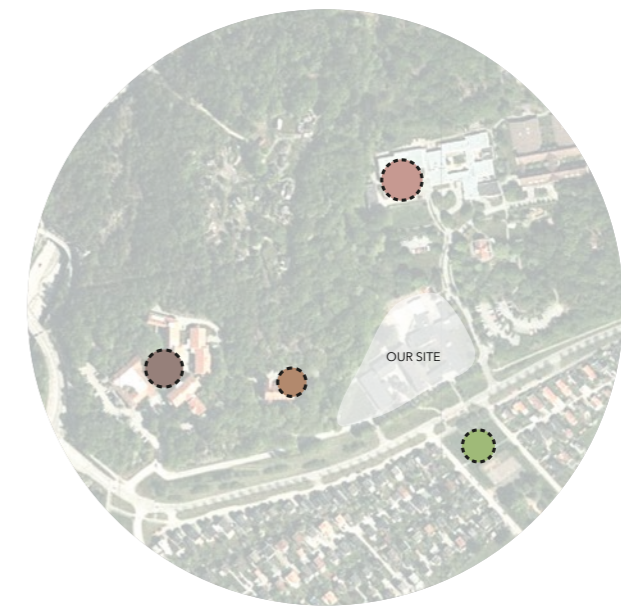
Benefits



**FUTURE BUILDINGS**  
Three housing units are planned to the north-east of the site. The housing will include a square which will bring a flow of people into the area.

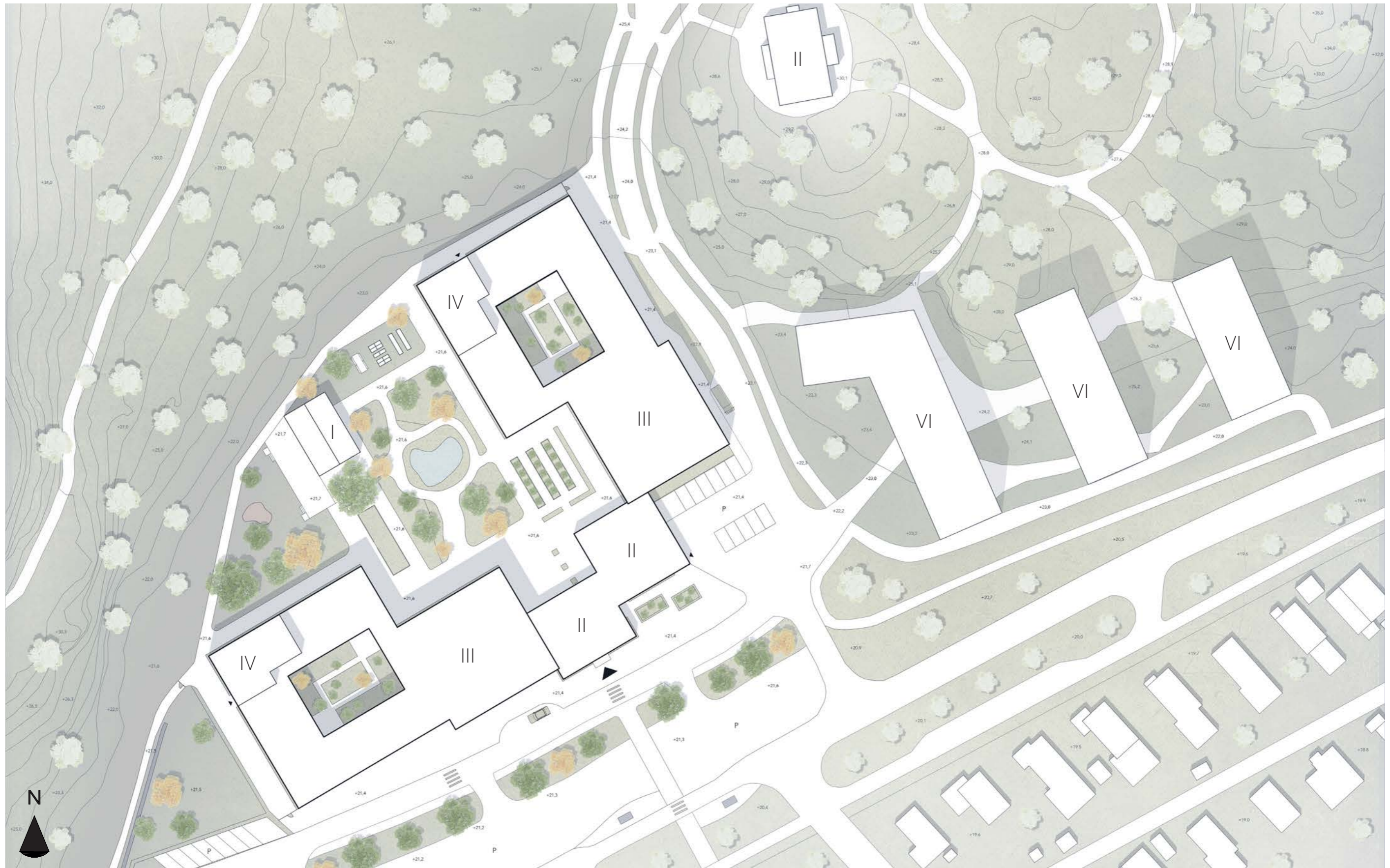


**GREEN STRUCTURE**  
The site is edged by a dense and green forest, which plays a central and very beneficial role in the position of our building.



**NODES IN THE AREA**  
In the north, the pink node is a preschool, while in the south, the green node, is a park. Bräcke Diakoni consists of one main building and a restaurant to the west.

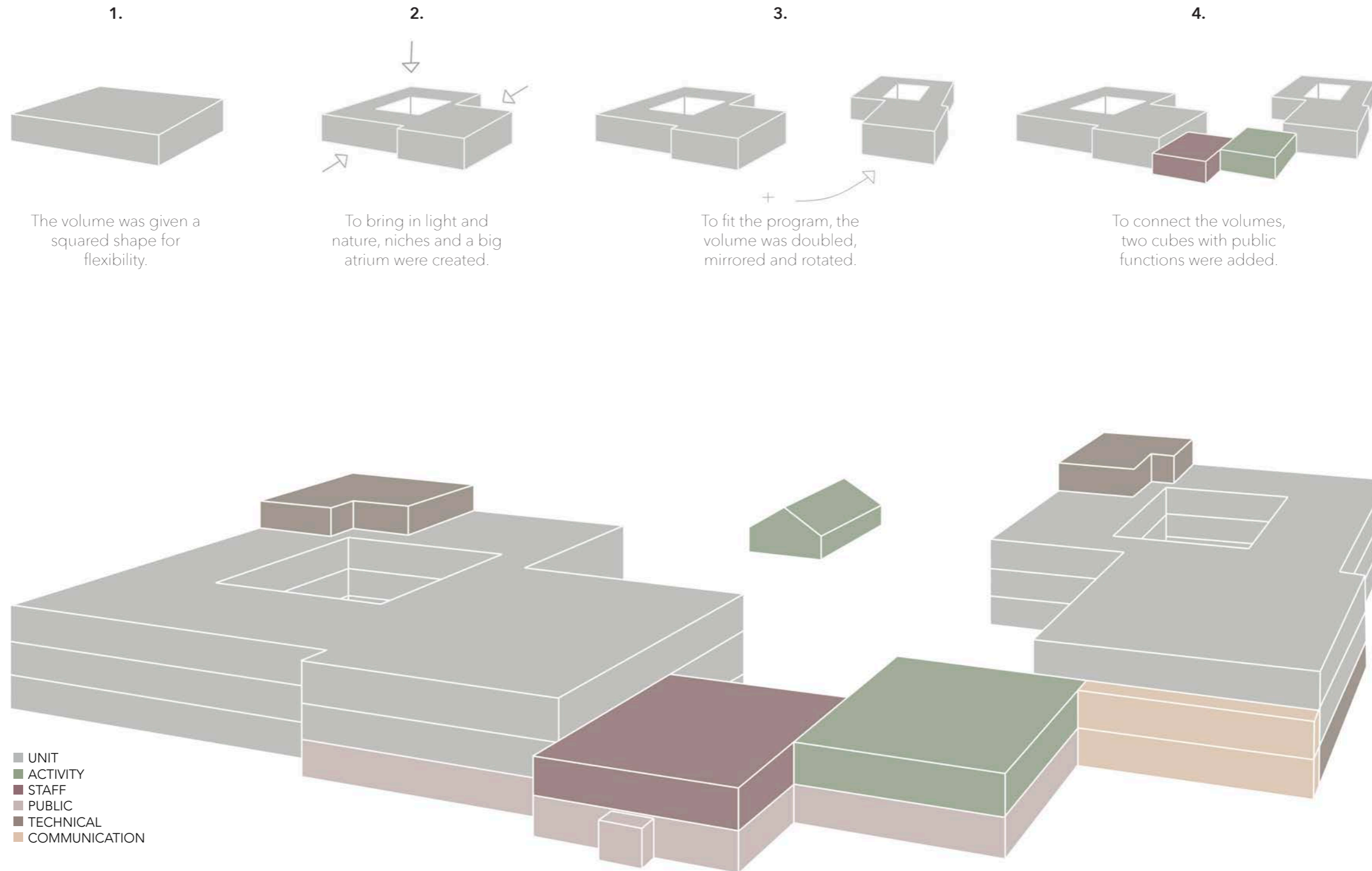
# SITE PLAN



GROUP 8: Agnes Leo, Anisia Gorchkov, Saman AliRamaei  
AUT164 - Space for Healthcare, Housing & Work MPARC

SCALE 1:800 0 20 40M

# BUILDING AND PROGRAMME

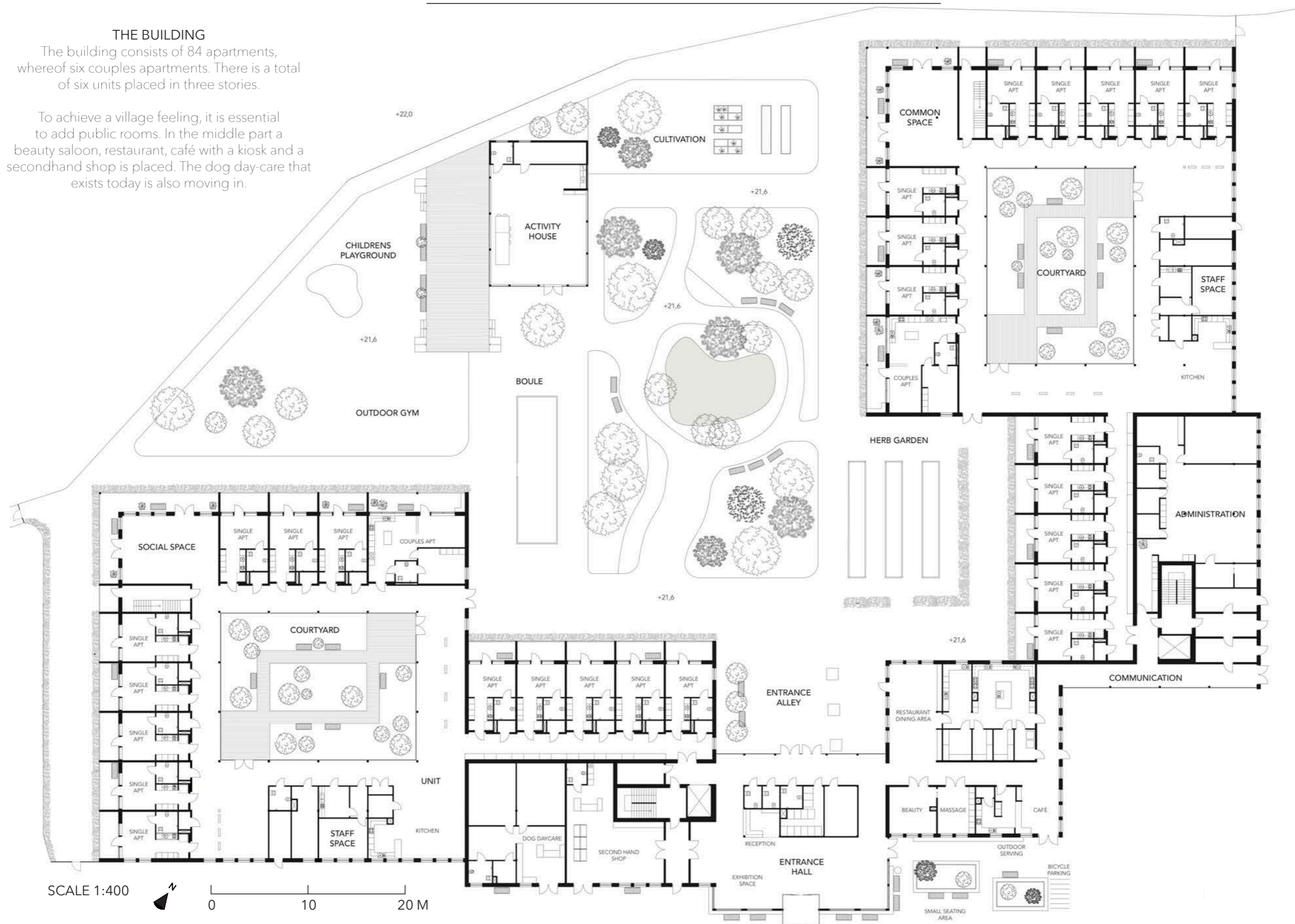


# ENTRANCE LEVEL AND GARDENS

## THE BUILDING

The building consists of 84 apartments, whereof six couples apartments. There is a total of six units placed in three stories.

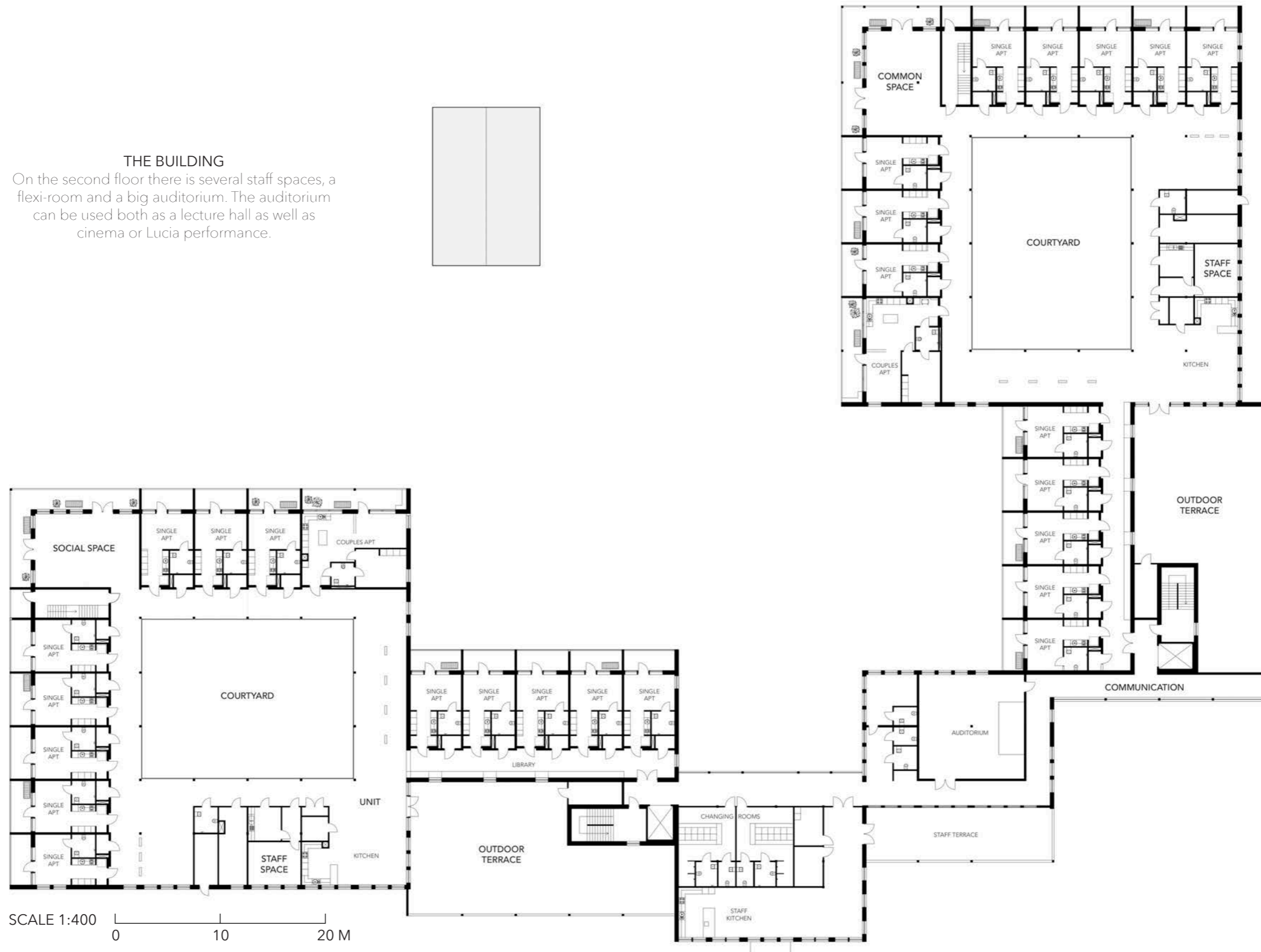
To achieve a village feeling, it is essential to add public rooms. In the middle part a beauty saloon, restaurant, café with a kiosk and a secondhand shop is placed. The dog day-care that exists today is also moving in.



# FIRST LEVEL

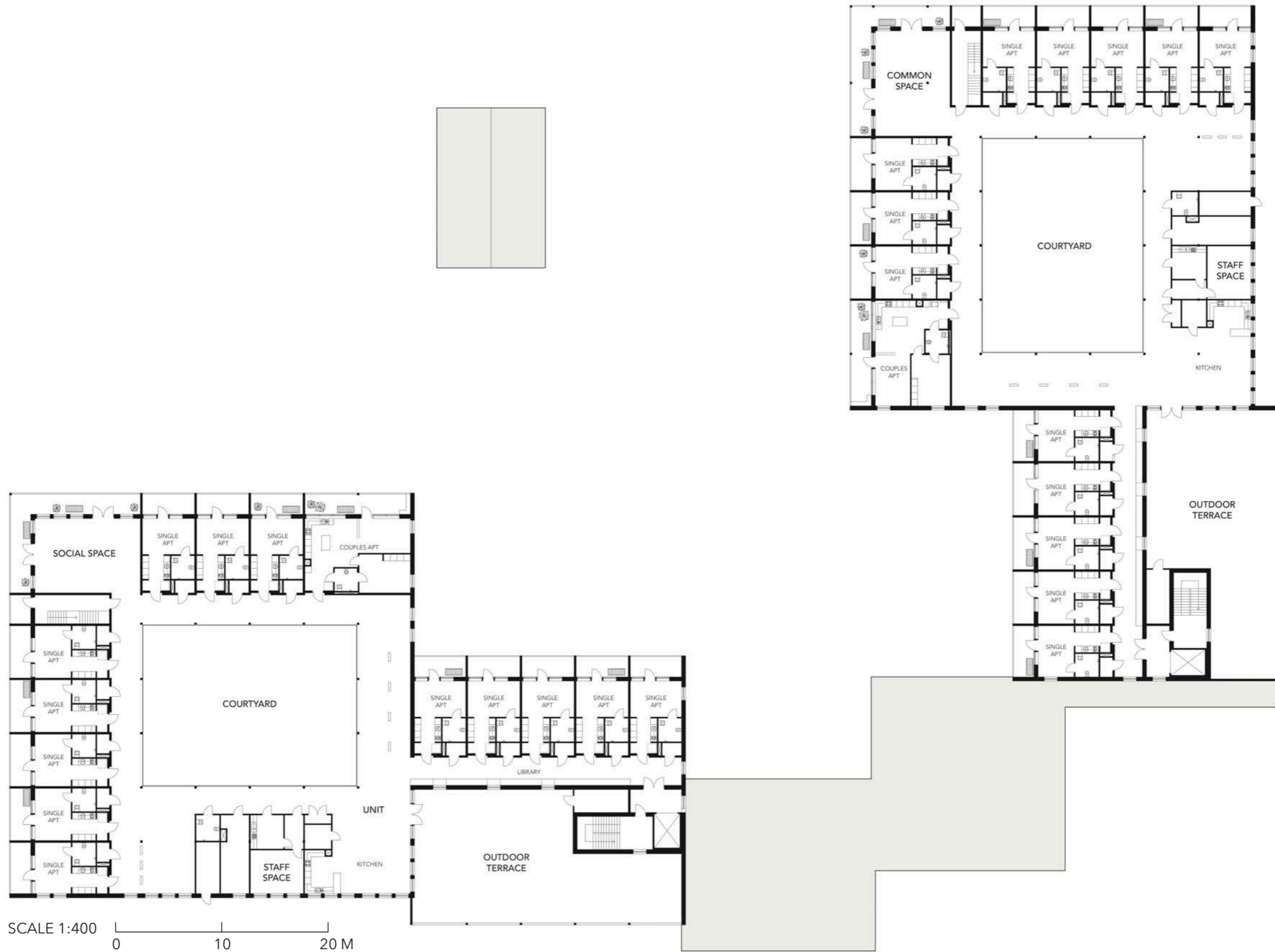
## THE BUILDING

On the second floor there is several staff spaces, a flexi-room and a big auditorium. The auditorium can be used both as a lecture hall as well as cinema or Lucia performance.





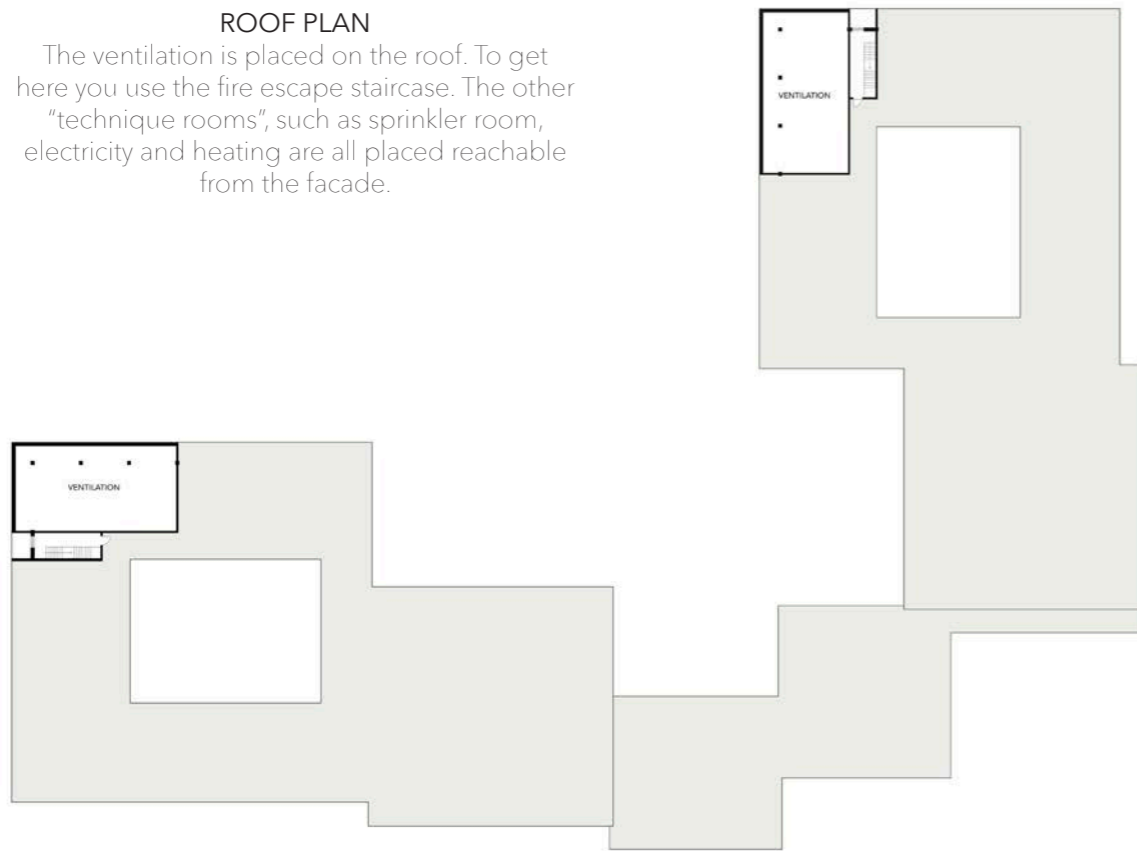
# SECOND LEVEL



# VENTILATION AND CONSTRUCTION

## ROOF PLAN

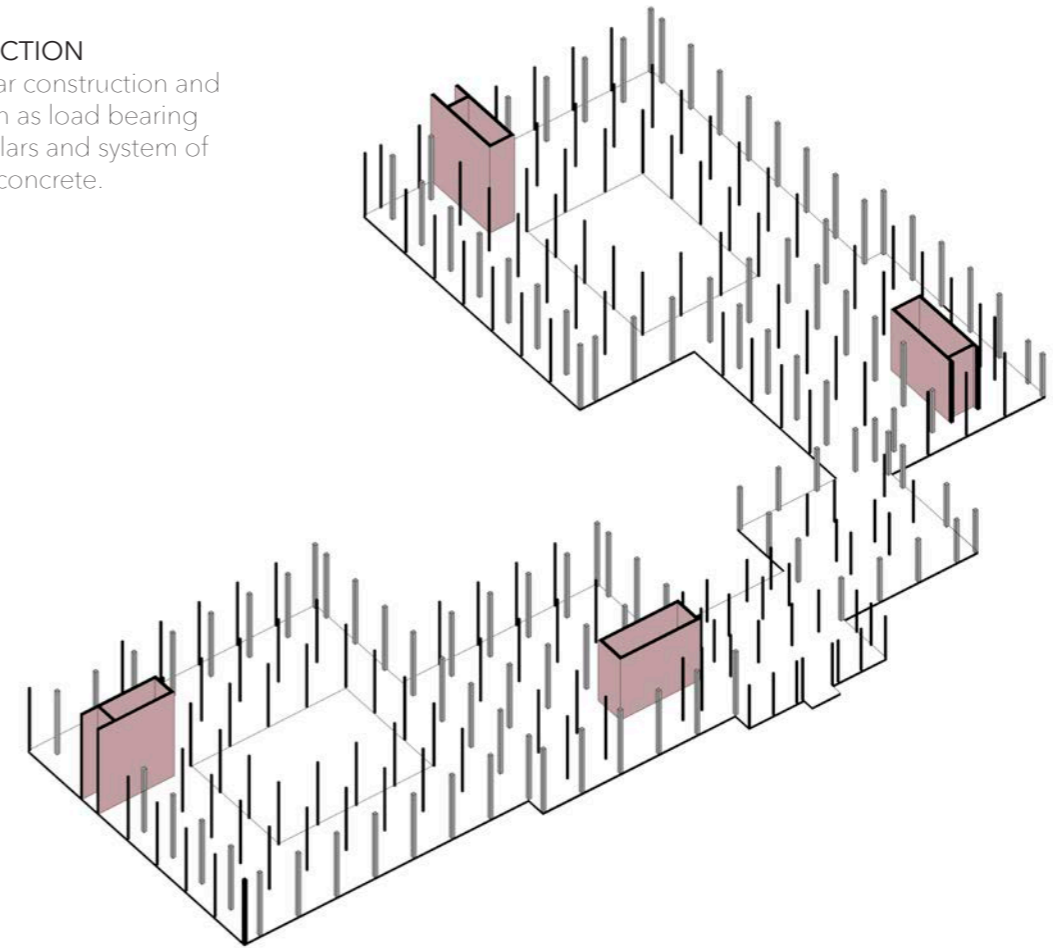
The ventilation is placed on the roof. To get here you use the fire escape staircase. The other "technique rooms", such as sprinkler room, electricity and heating are all placed reachable from the facade.



SCALE 1:400  
0 20 M

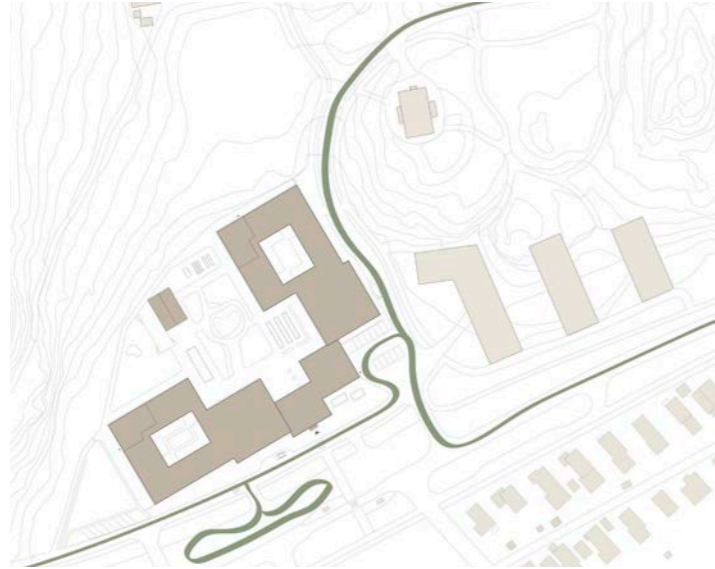
## CONSTRUCTION

The building has a pillar construction and the stairwells function as load bearing sideways. Both the pillars and system of joints are in concrete.



# FLOWS OF PEOPLE

Exterior



## CARS

Cars park both close to the main entrance and the staff entrance. The site is accessible to cars, yet enclosed to preserve the green structure.



## BIKERS

The site is easily accessible by bike. Generous bike parking is planned around and close to the residence.



## PEDESTRIANS

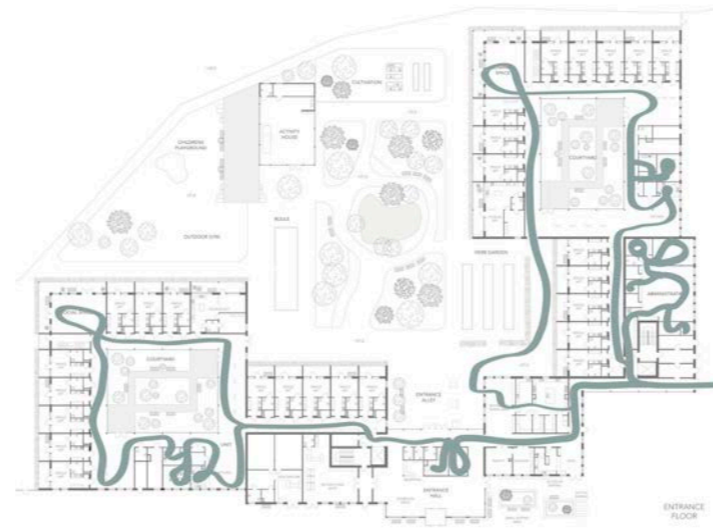
Most movements are around the structure, to and from the bus stop and in the surrounded residential part.

Interior



## RESIDENTS

Residents are free to move around the area, except in the staff spaces. The connections to the outdoors are enhancing the movement between inside and outside.



## STAFF

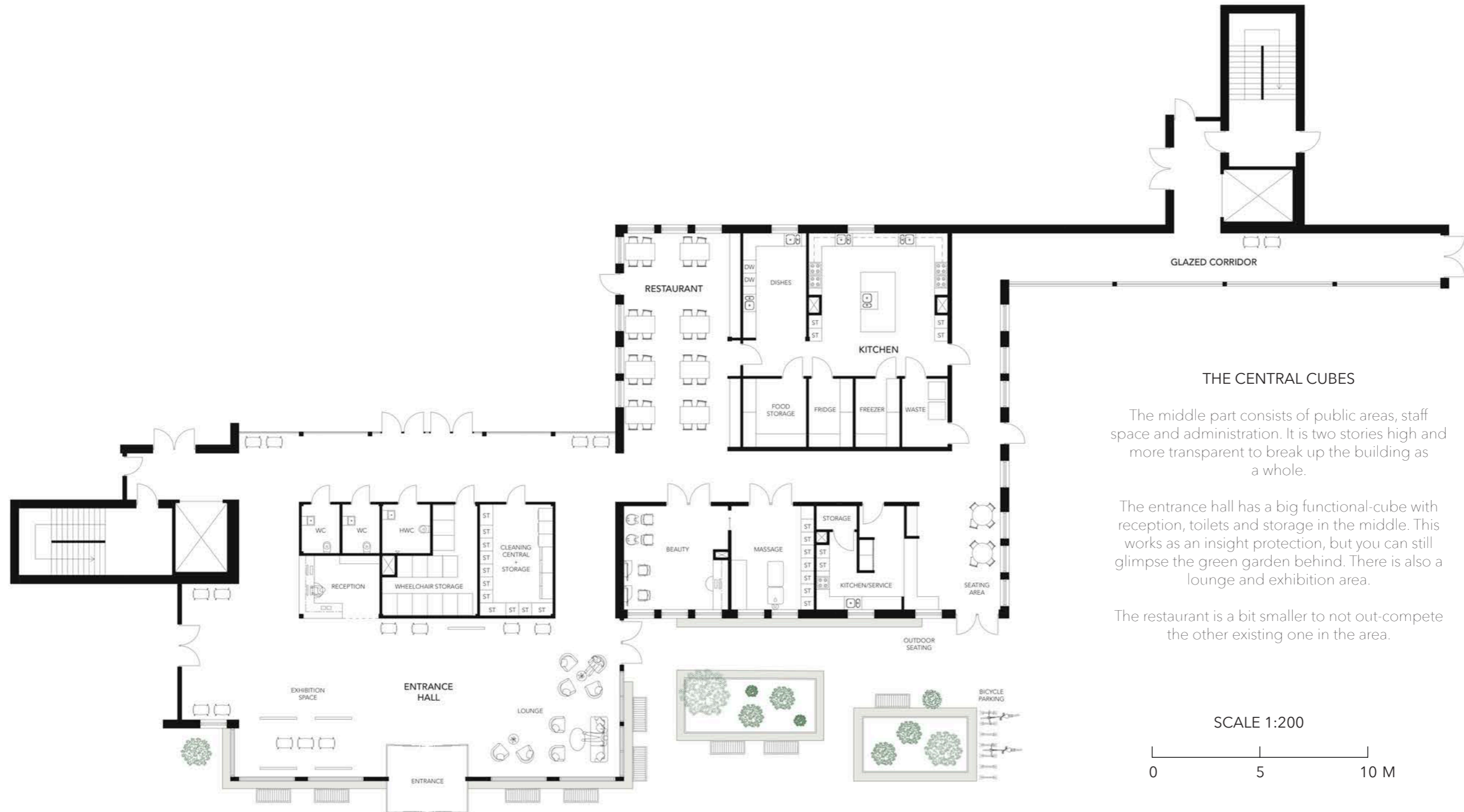
Staffs are moving mostly in the staff and administration area, as well as in the units. The movement is improved by the quality of no dead ends.



## CHILDREN

Children may access the garden through the gateway in the north, close to the pre school. In the garden, they can use both the cultivation area and the playground.

# PUBLIC CUBES - ENTRANCE LEVEL



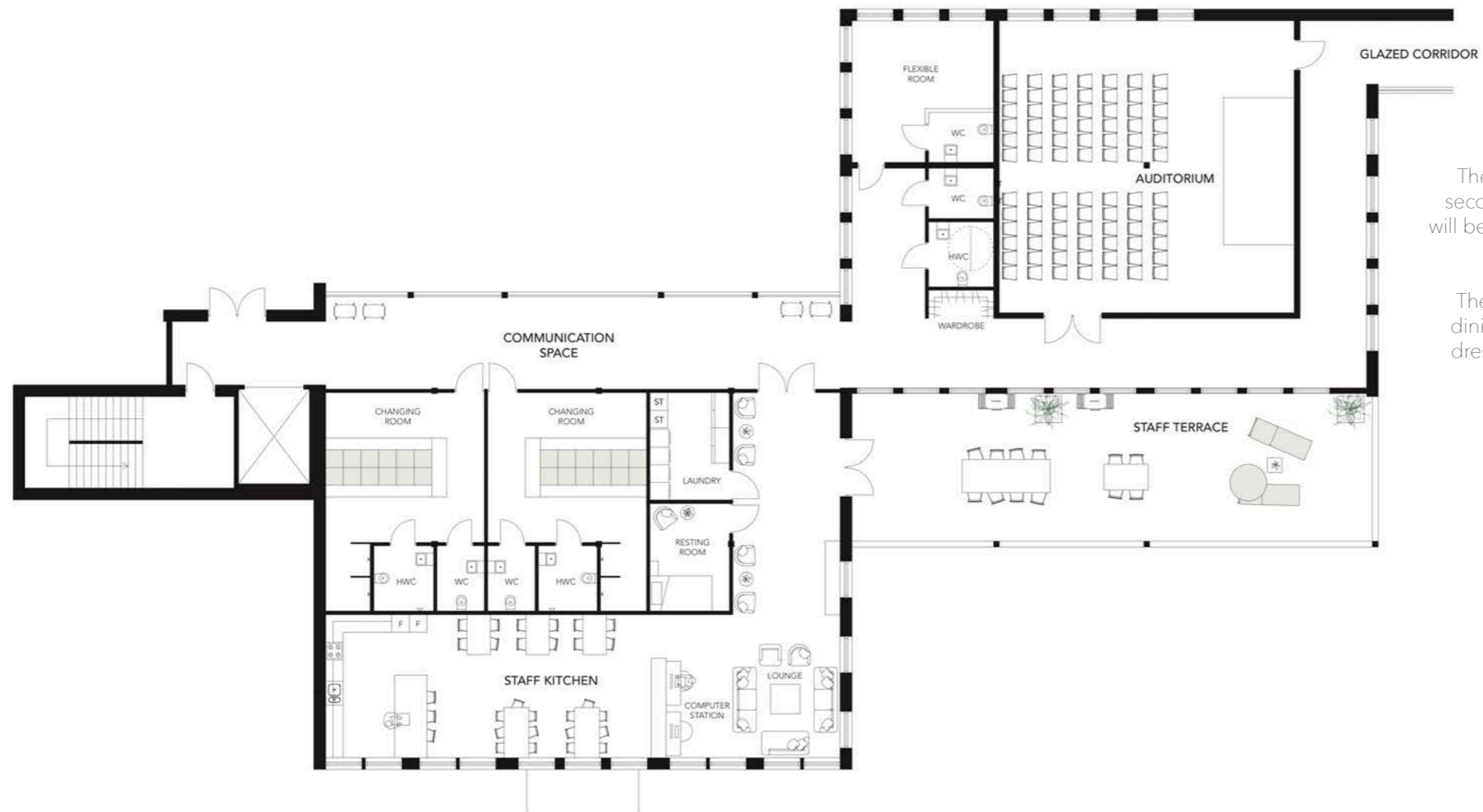
## THE CENTRAL CUBES

The middle part consists of public areas, staff space and administration. It is two stories high and more transparent to break up the building as a whole.

The entrance hall has a big functional-cube with reception, toilets and storage in the middle. This works as an insight protection, but you can still glimpse the green garden behind. There is also a lounge and exhibition area.

The restaurant is a bit smaller to not out-compete the other existing one in the area.

# PUBLIC CUBES - FIRST LEVEL

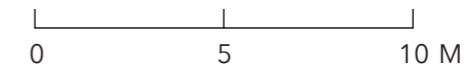


## STAFF SPACES

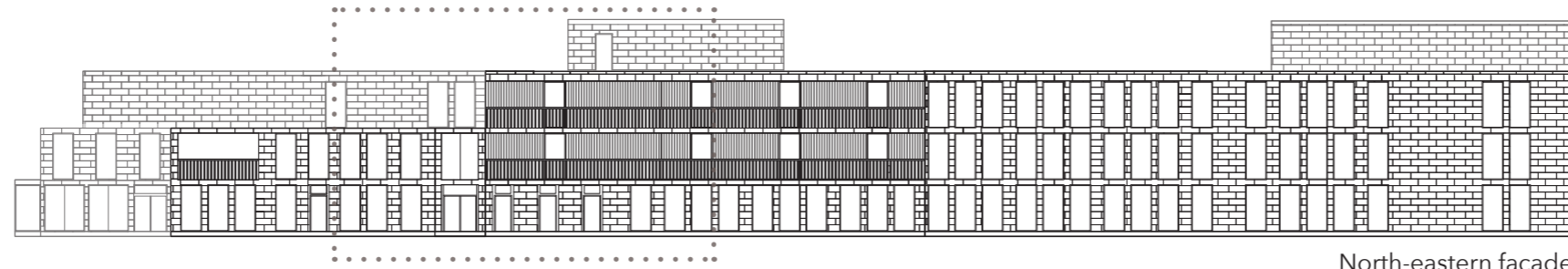
The staff area is placed in the middle on the second floor. It's placed so the way for the staff will be as short as possible and that there is always easy to transport between the units.

The staff space consists of a kitchen with big dining area located towards glazed walls, two dressing rooms, rest room and laundry room. They have also access to a big terrace.

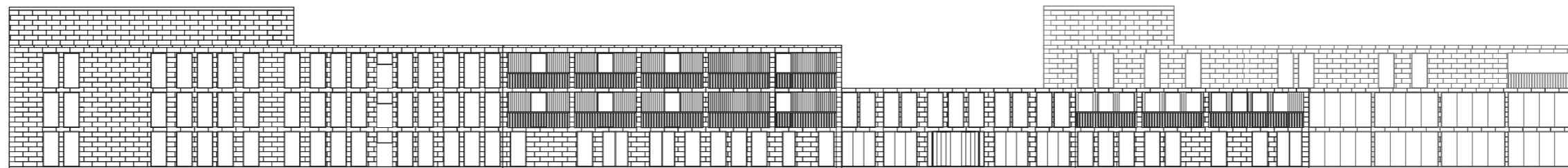
SCALE 1:200



# QUALITIES OF SPACES - FACADES

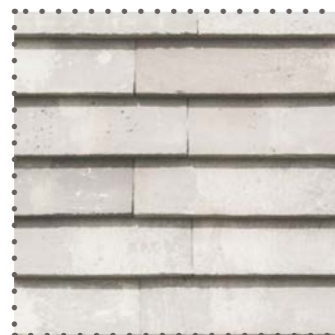


North-eastern facade.



South-eastern facade.

SCALE 1:400  
0 10 20 M



## TERRACES/ BALCONIES

One of our leading intentions has been the connection to nature. Therefore, we have tried to make the step from indoor to outdoor easier and shorter by adding many different terraces and balconies, both protected and not.

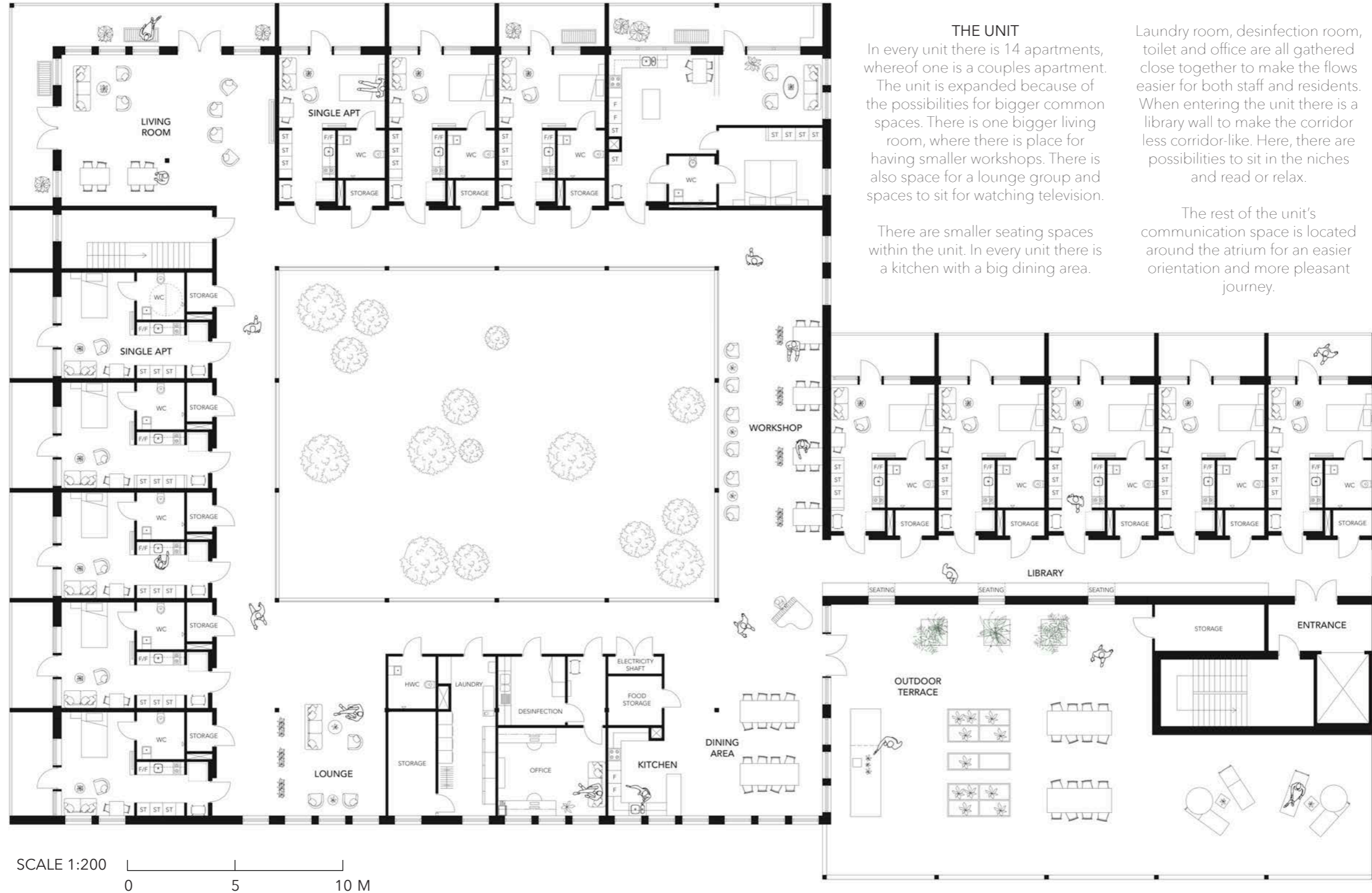
## MATERIALS

The facades are made of screen brick. To break the building up, the different cubes have different colors. The balcony walls are made of wood, this to get a mix of hard and soft textures. The winter garden/activity house is made of glass.



Figure 1. Part of the building with terraces and various facade shades.

# UNIT - FIRST LEVEL



## THE UNIT

In every unit there is 14 apartments, whereof one is a couples apartment.

The unit is expanded because of the possibilities for bigger common spaces. There is one bigger living room, where there is place for having smaller workshops. There is also space for a lounge group and spaces to sit for watching television.

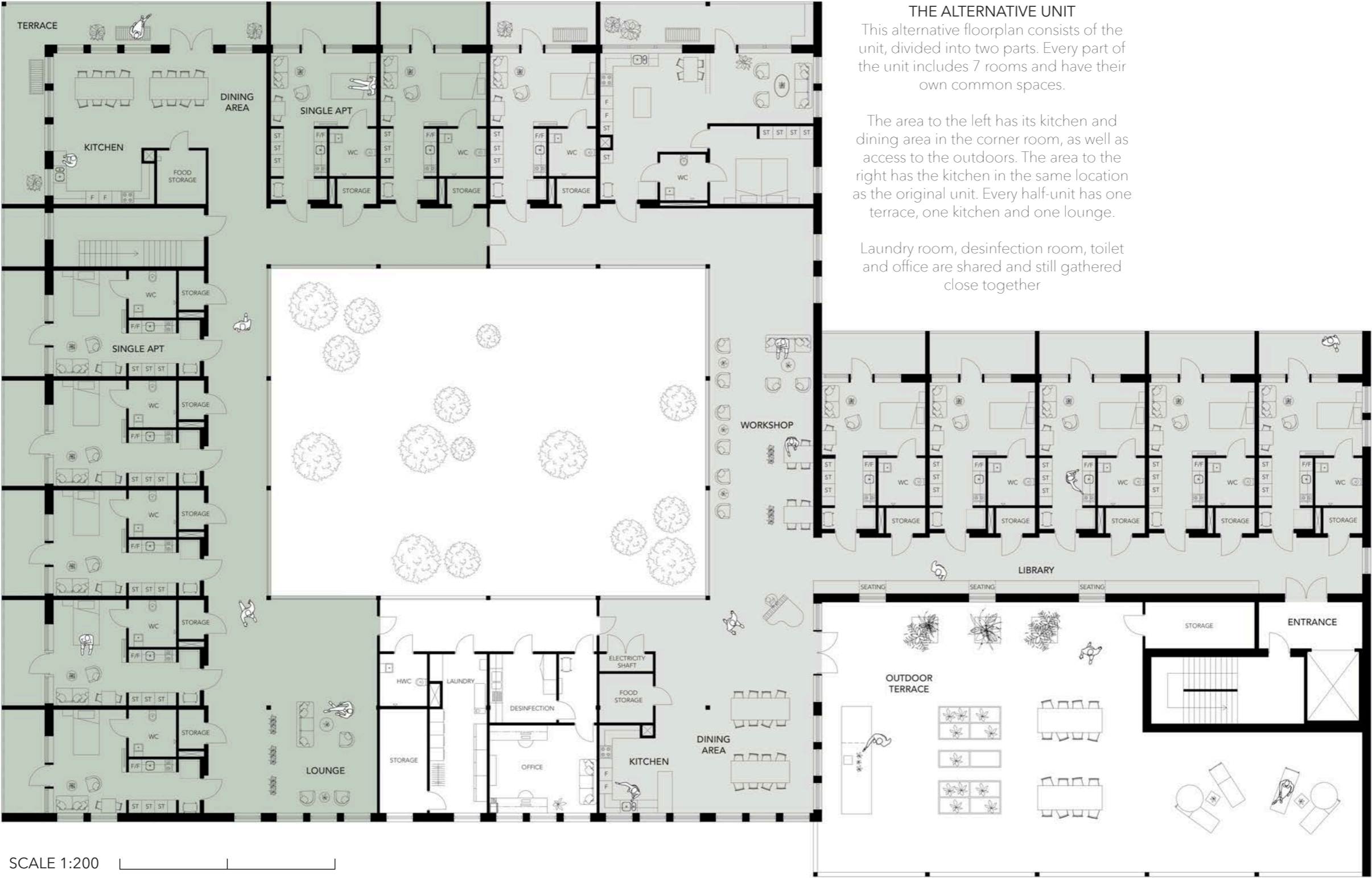
There are smaller seating spaces within the unit. In every unit there is a kitchen with a big dining area.

Laundry room, disinfection room, toilet and office are all gathered close together to make the flows easier for both staff and residents. When entering the unit there is a library wall to make the corridor less corridor-like. Here, there are possibilities to sit in the niches and read or relax.

The rest of the unit's communication space is located around the atrium for an easier orientation and more pleasant journey.

SCALE 1:200  
0 5 10 M

# ALTERNATIVE UNIT - FIRST LEVEL



**THE ALTERNATIVE UNIT**

This alternative floorplan consists of the unit, divided into two parts. Every part of the unit includes 7 rooms and have their own common spaces.

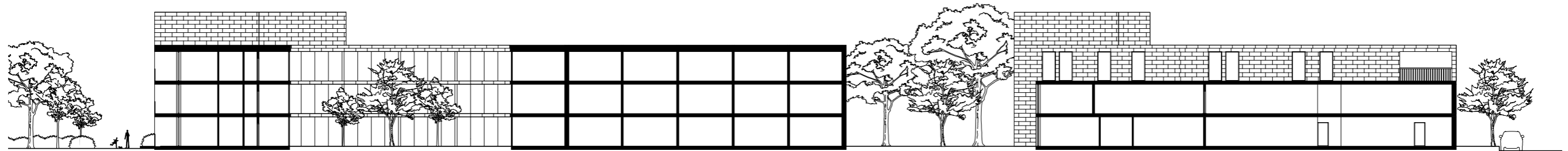
The area to the left has its kitchen and dining area in the corner room, as well as access to the outdoors. The area to the right has the kitchen in the same location as the original unit. Every half-unit has one terrace, one kitchen and one lounge.

Laundry room, desinfection room, toilet and office are shared and still gathered close together

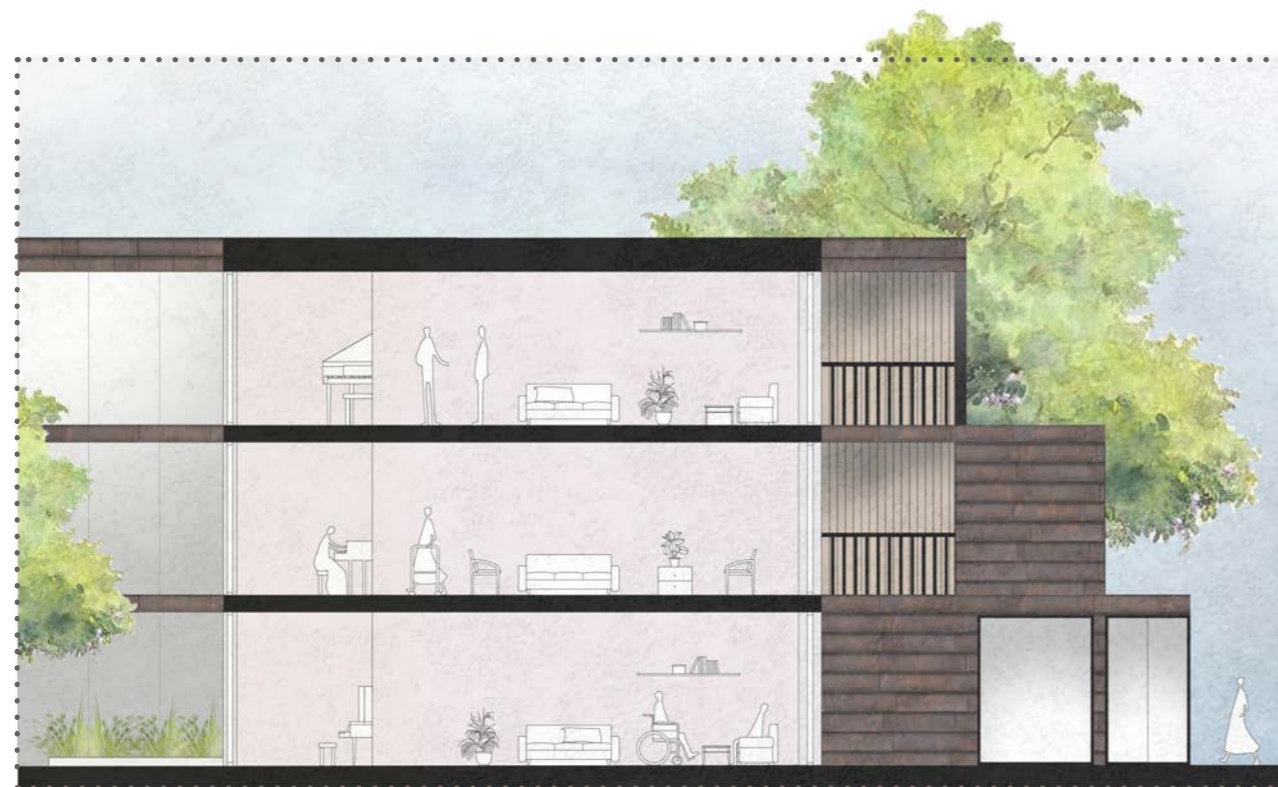
SCALE 1:200 0 5 10 M



# QUALITIES OF SPACES - SECTIONS

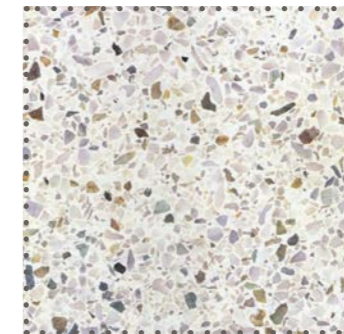


SCALE 1:400  
0 10 20 M



## THE BUILDING

To de-institutionalize the building, we aspired to break up the structure horizontally, but also vertically by creating height differences in the building volumes.



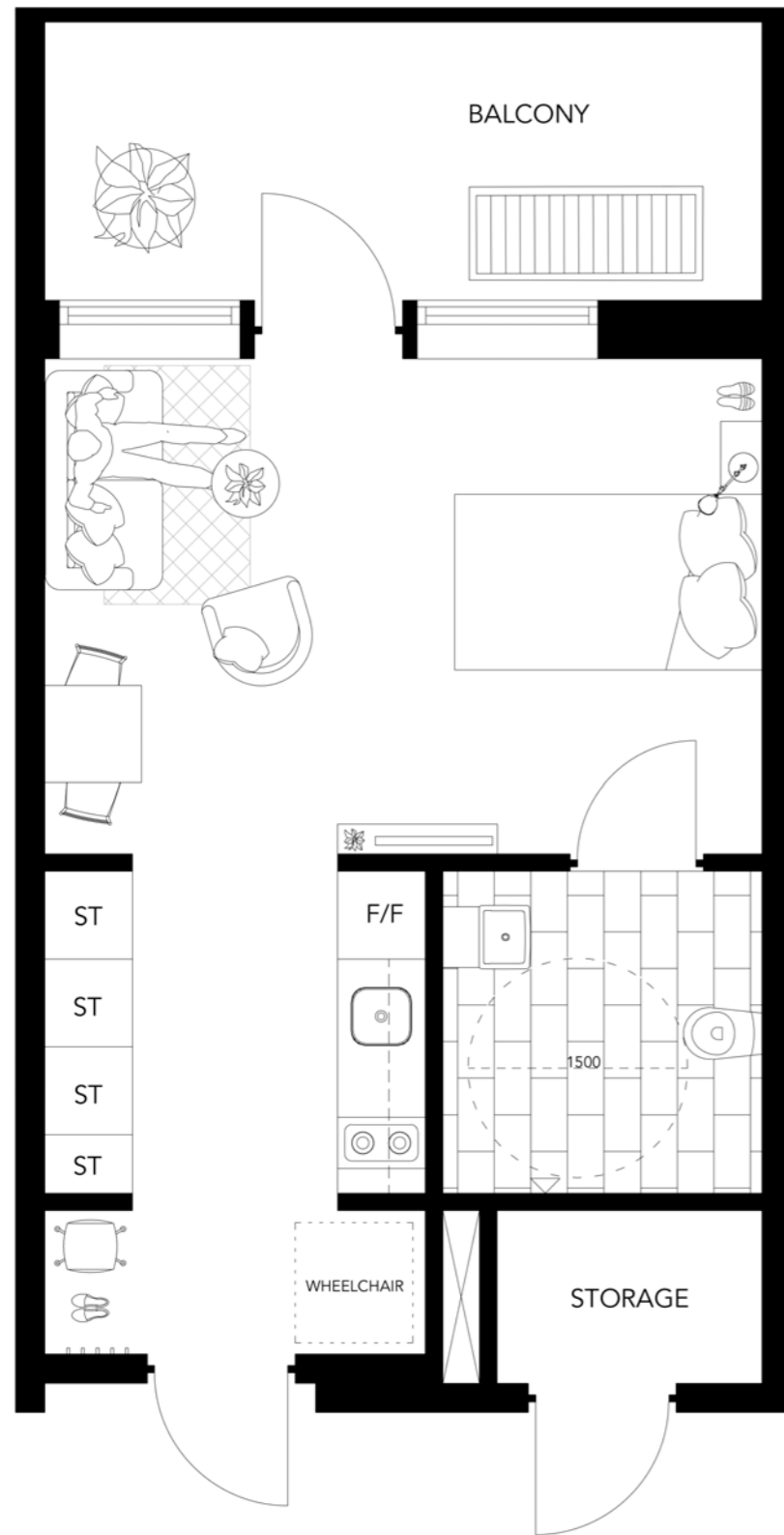
## MATERIAL

The interior is a mix of wooden floor and colorful walls. Every unit has their own color for easier orientation and wayfinding. The floor in the entrance hall is made of terrazzo.



# SINGLE APARTMENT

SCALE 1:50  
0 1 2 M



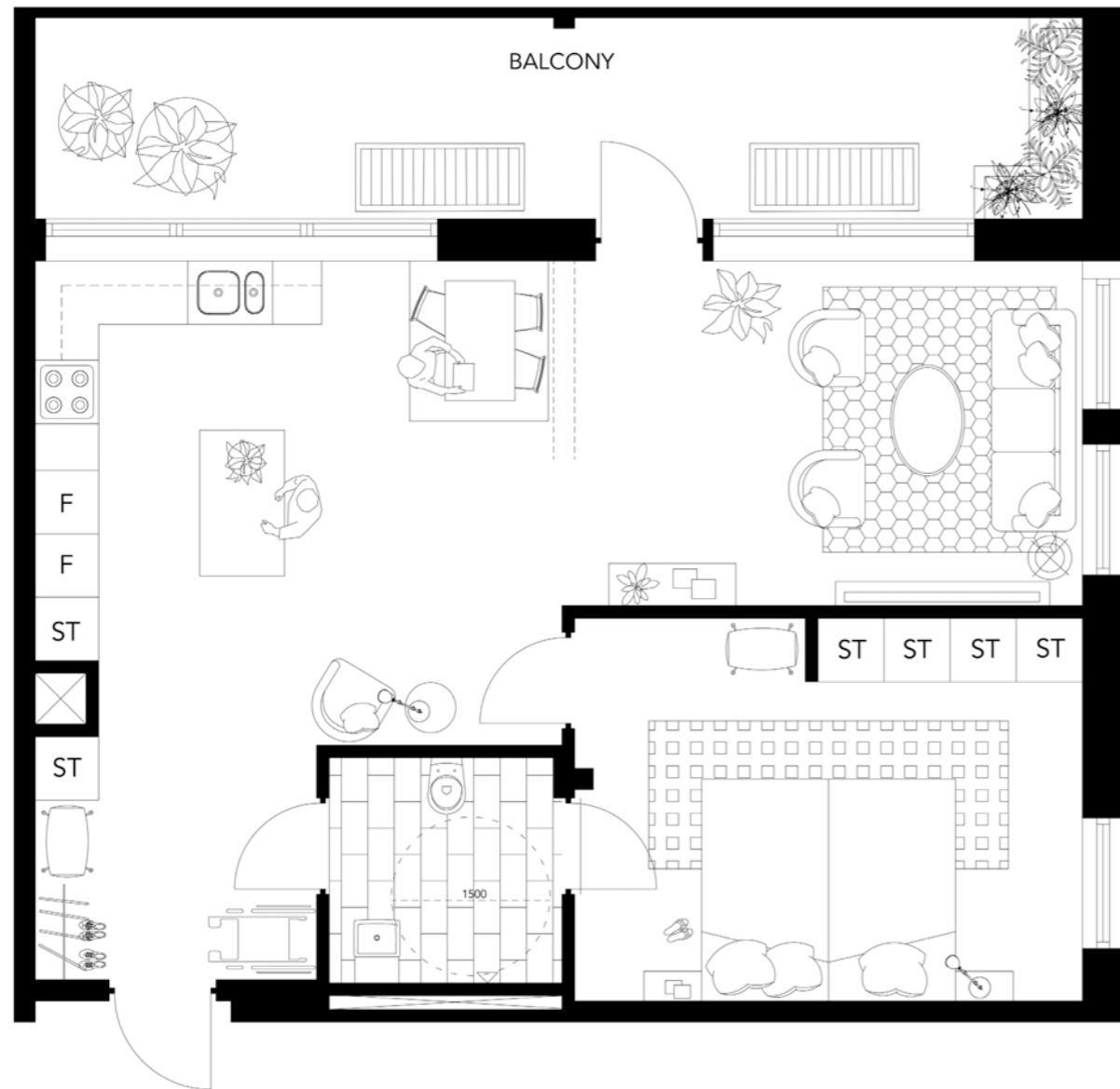
## THE SINGLE APARTMENT

All the single apartments are provided with a small kitchenette and good storage opportunities. In the hallway there is room to store a wheelchair/walker. There is also space for a small seating pouf. The apartment has the possibility of furnishing a sofa, small dining table, TV and bed.

The bed is placed close to the bathroom door because of the great fall risks between bed and toilet. To make that transportation easier there is a hand railing in wood placed on the wall. All the apartments have their own balcony to make the connection to nature stronger.

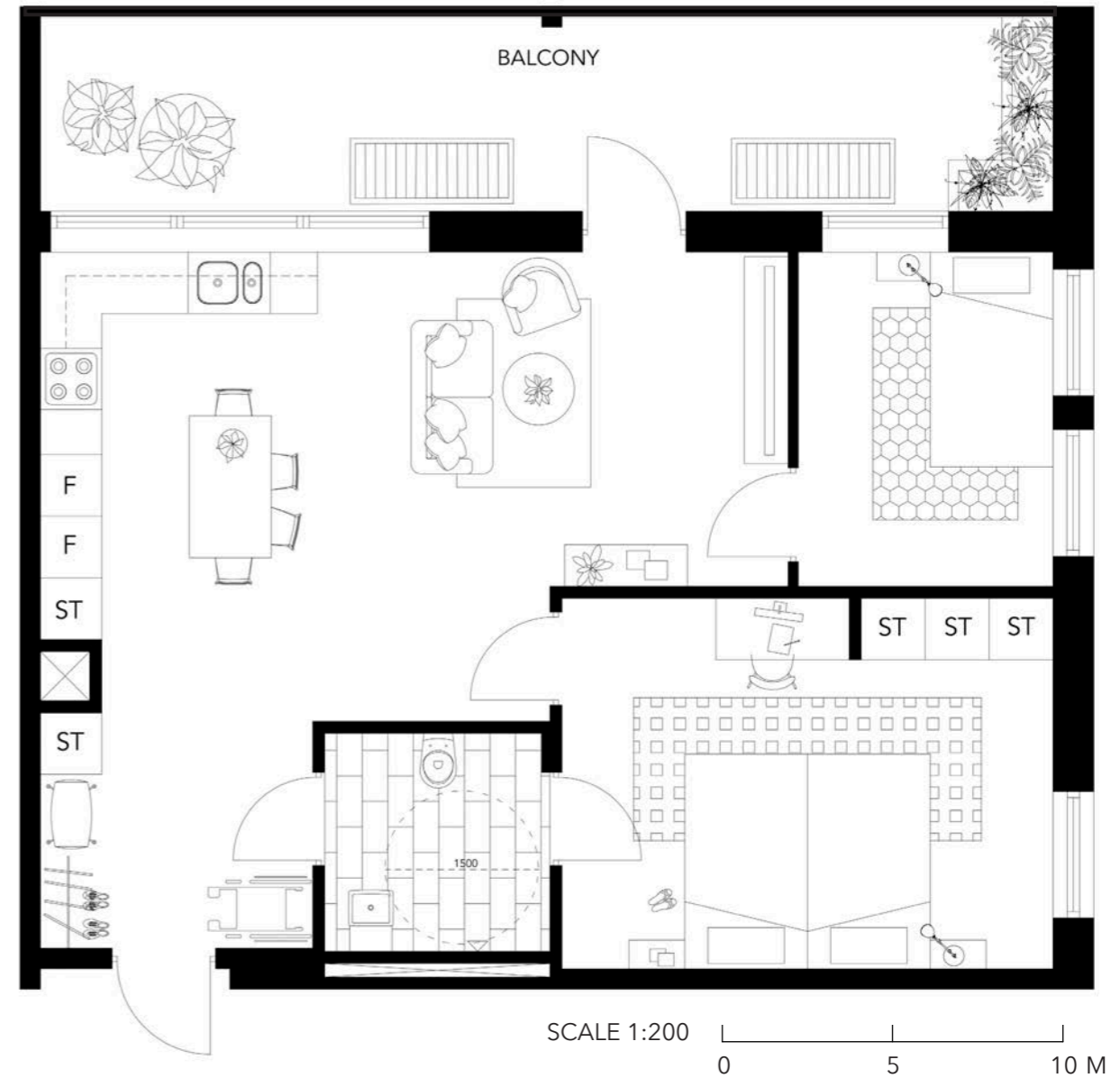


# COUPLES APARTMENT



## THE COUPLES APARTMENT

There are two versions of the two rooms apartment. Both of them have fully equipped kitchen with a dining area. The bathroom has two doors, also here because of the fall risks.



In one of the examples we assume that one of the residents is healthy and therefore want the possibility to sleep in a separate bedroom. In this example, the living room is a bit smaller. In the other version there is only one bedroom. This makes the living room and social areas bigger.

# QUALITIES OF SPACES - GARDEN



SCALE 1:200  
0 5 M

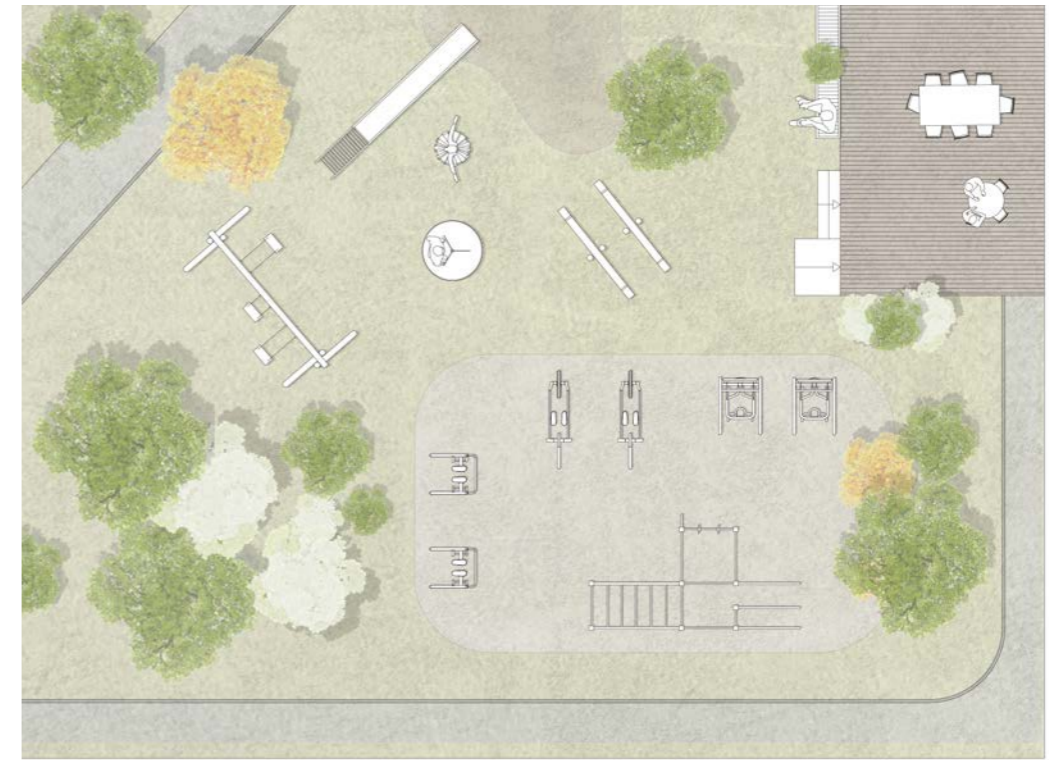
## THE ACTIVITY HOUSE

The activity house is intended for ongoing events, social activities and gardening. This space can both be used by the residents but also the staff.

The connection between different generations is beneficial for both, therefore there are places created for them to meet.

The playground can be used both by the children that's visiting, or the children from the pre school close by.

The children can also use the cultivation area and/or the activity house.



## THE GARDEN

For people with dementia outdoor spaces are important. By creating a big green garden with options, you can choose what you wish to do.

There are possibilities for playing boules, work out in the gym, relax in the leafy part, cultivate herbs and flowers or be inside in the winter garden/ activity house.

## THE ENTRANCE GARDEN

By the secondary entrance there is a small spot to sit down and relax. The café has its outdoor serving here during summertime.



# PERSPECTIVES



Perspective. The unit - lounge and kitchen next to the atrium.



Perspective. The entrance with a view to the garden.



Perspective. The building seen from south. Entrance, entrance garden and outdoor serving.