



FRIHAMNEN SJUKHUSET
- THE HARBOUR HOSPITAL

2016 DESIGN COMMISSION - GÖTEBORG, SE

TATARI PHAN MARTINEZ

CHALMERS SCHOOL OF ARCHITECTURE • GOTHENBURG, SWEDEN

INDEX

THE FRIHAMNEN DISTRICT

BACKGROUND	3
PRELIMINARIES	5
SITE PLAN	6

SCHEMATIC DESIGN

DESIGN PROGRAM	7
GOODS FLOW	7
FLOOR STRUCTURE	8
SCHEMATIC FLOORPLANS	9

DETAIL FLOORPLANS

LEVEL N0	12
LEVEL N1	13
LEVEL N3	14
LEVEL N4	15
LEVEL N11	16
LEVEL N12 - N13	17
LEVEL N13	18

FAÇADES AND SECTIONS

STRUCTURE	19
FAÇADES: DESIGN GUIDELINES	20
FAÇADES	21
SECTIONS	22

BACKGROUND

FRIHAMNEN

The new Frihamnen District was developed in order to link the center of Gothenburg across the river, into the the Kvillebäcken, Lindholmen and Backaplan areas. The vision was to turn this harbour area into a green and dense part of the Gothenburg city center.

By 2021, it is projected that the Frihamnen District will have 3,000 new homes, 2,000 new workplaces and a sizable public park. It is projected to be a walking district where visitors will park their cars in a public garage before entering the residential area situated right next to the park.

The design of this area also revolves around the idea of social integration. The pavements are immersed in green qualities that enable the user the possibility to stop, sit down and have a conversation with other pedestrians passing by. It is a strong pledge to embrace the cultural diversity currently being brewed in the city and give way to a stronger and unified society.

VISION

After going through the course literature and having made a thorough analysis on the existing conditions and projections for the site, we produced our interpretation and intentions for this design commission. We believe that it is time to have a comprehensive approach and be aware that the user experience proves to be as important as the end purpose of going to a healthcare facility: treating our ailments and getting better.



Source: Image courtesy of KKA



GREEN

We want to give the hospital a qualitative courtyard with trees and seating areas. We believe it will provide a healing environment for both patients and staffs. The atmosphere is calm and quiet as opposed to the busy square in front of the hospital.



INTEGRATION

The building provides health promoting functions in two of its levels. As designers, our intention is to bring the public into the hospital's courtyard as a way to take away that feeling of estrangement from ill people.



SELF-EMPOWERMENT

We aim for a clear and rational floor structure inside the hospital that allows patients to be as much independent as possible.



MEMORY

We want to use the origin of the place, which is a ship harbour, as an inspiration to design the envelope of the building. By doing this, we hope people will be reminded of Frihamnen's history when they arrive to the public transportation hub and meet our hospital.

BACKGROUND

PLOT ANALYSIS

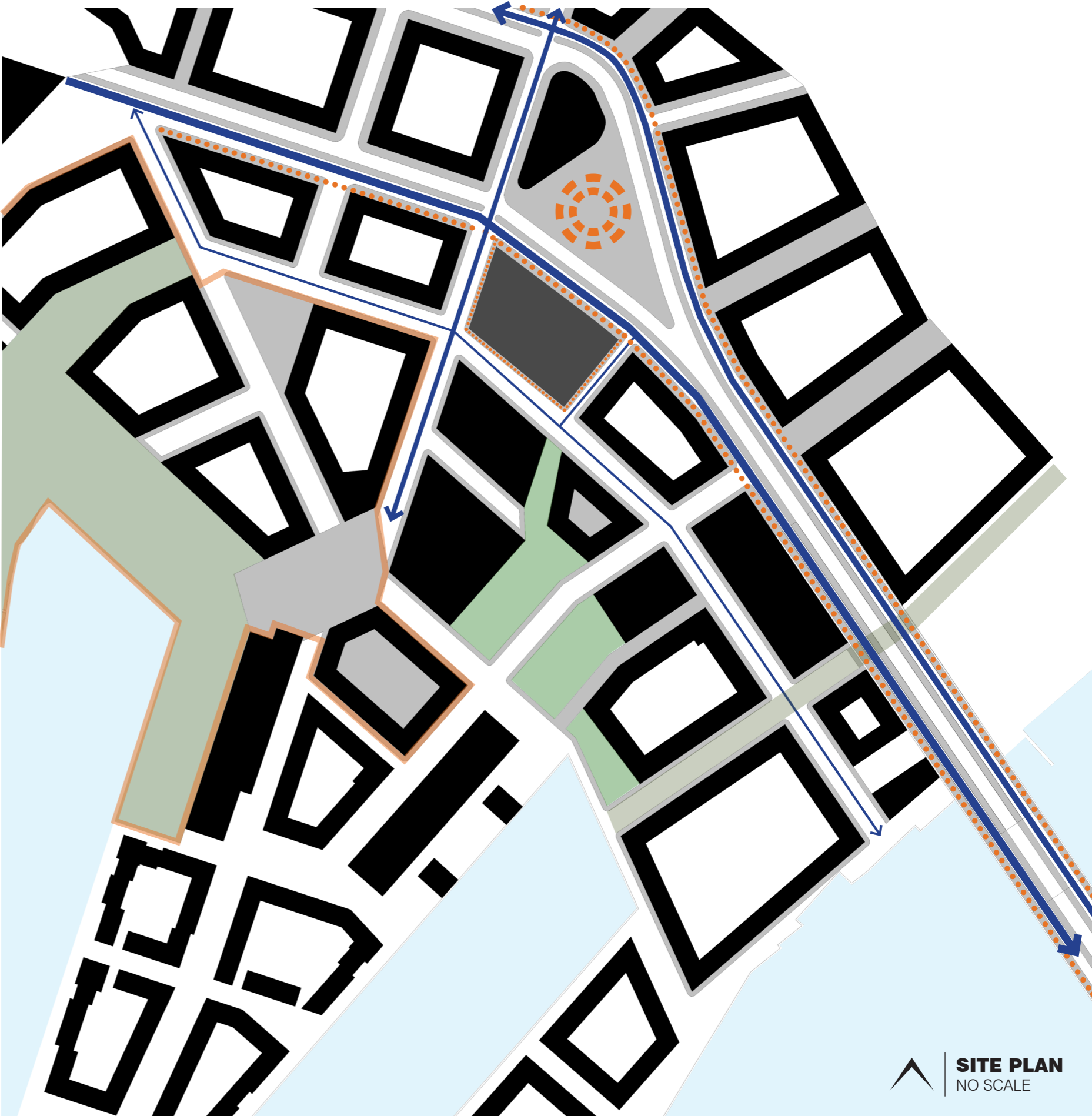
The site is located along the main street that opens up from the Gothenburg City Center into Frihamnen, and provides a link with Backaplan.

Facing the largest square of the district with several bus and tram stops on its northern side, the hospital stands as a gateway leading people into Frihamnen's attractions such as the Jubileum's Park and Frihamnen's Waterfront which stay further down the southern part.

The building will also probably leave people with their first impression on Frihamnen when they visually experience it right after getting off the public transports.

The busy atmosphere as part of the northern facade will be attenuated when people either walk down the western or eastern smaller streets to access the area. Although the two bear resemblances in terms of size, the western one possibly carries heavier traffic flows as it connects with another big traffic node two blocks away from the hospital and then finally ending at the park and waterfront area.

- MAIN CAR FLOW
- SECONDARY CAR FLOW
- TERTIARY CAR FLOW
- PEDESTRIAN FLOW
- SQUARE
- PUBLIC FUNCTIONS
- PUBLIC GREEN AREA
- SEMI-PUBLIC GREEN AREA



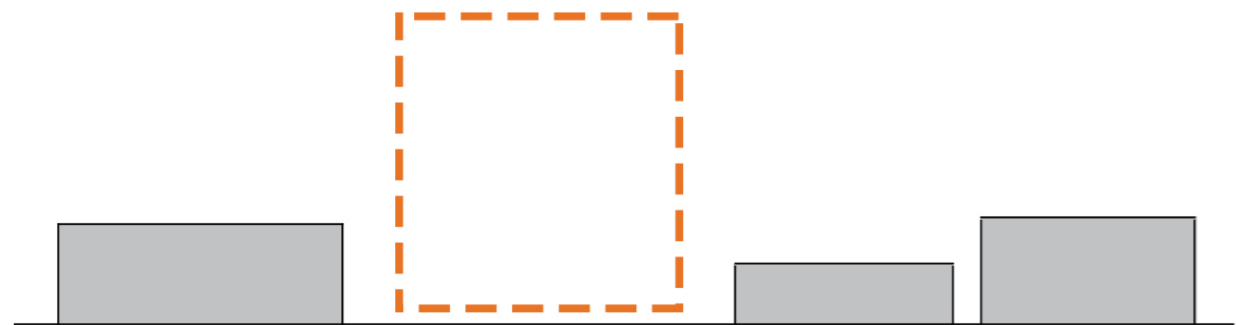
PRELIMINARIES

DESIGN GUIDELINES

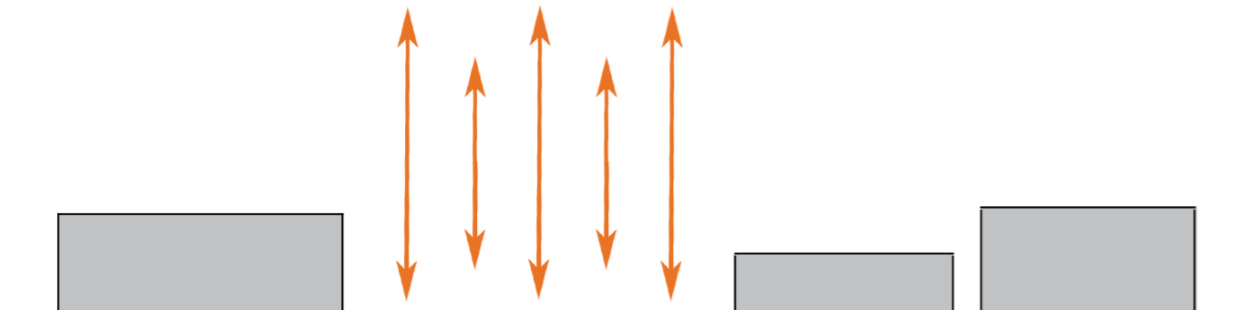
Before actually coming up with the building's shape, we envisioned its character through some basic guidelines:



1. The plot sits in an area surrounded by bulky buildings that form a solid belt in front of the square.



2. If the building's shape follows the surrounding typology, the belt will be even more obvious.



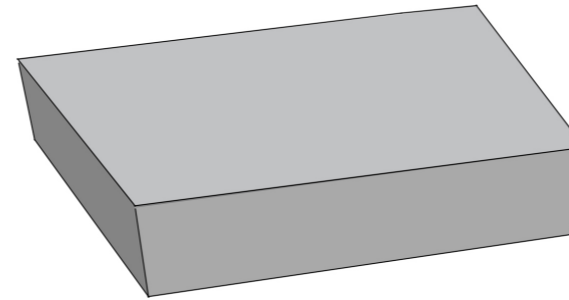
3. We played with verticality to create a rhythm that breaks this belt.



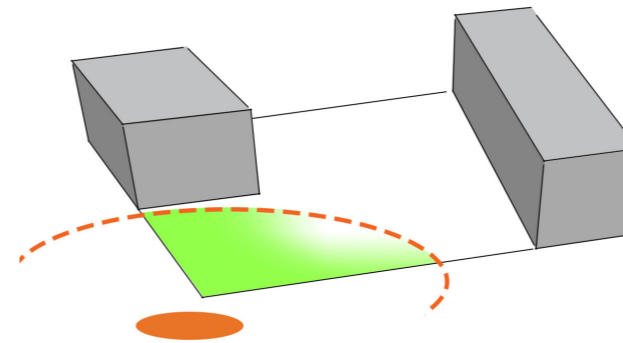
4. It's important to give the building a human-scale character to relax the pedestrians coming to the hospital or just walk pass it to access the area.

SCULPTING PROCESS

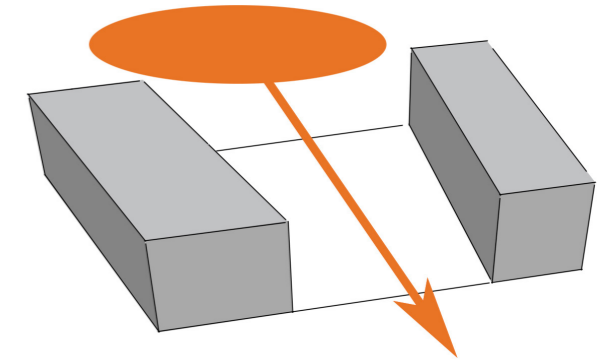
The volume was sculpted based on the design guidelines:



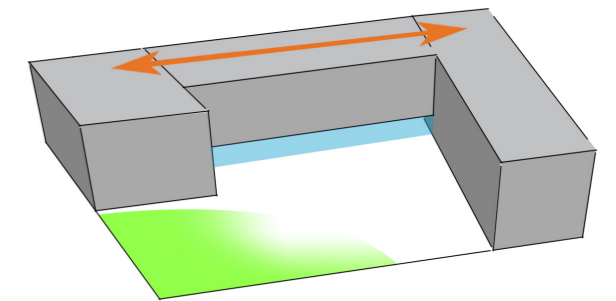
1. We simply took the plot's footprint and extruded it.



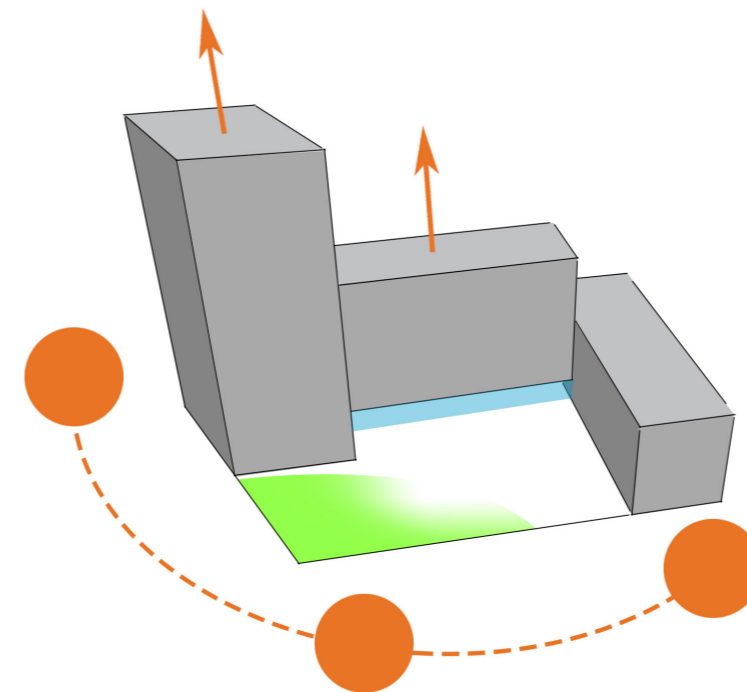
3. We identified the main traffic node. We then shortened the west volume to direct people to the node, and we started the courtyard from there.



2. The volume was then split in half to create a walkway into the plot.



4. In order to provide a more efficient workflow and an indoor connection between these two volumes, we decided to link them through a third middle block. The lower part is glazed to allow a visual connection to the courtyard.



5. We emphasized the verticality aspect of the volumes by adjusting the three heights according to sun study to make sure the courtyard receive the best and longest daylight all year round. We finally came to a conclusion with a basic three-volume composition.

SITE PLAN

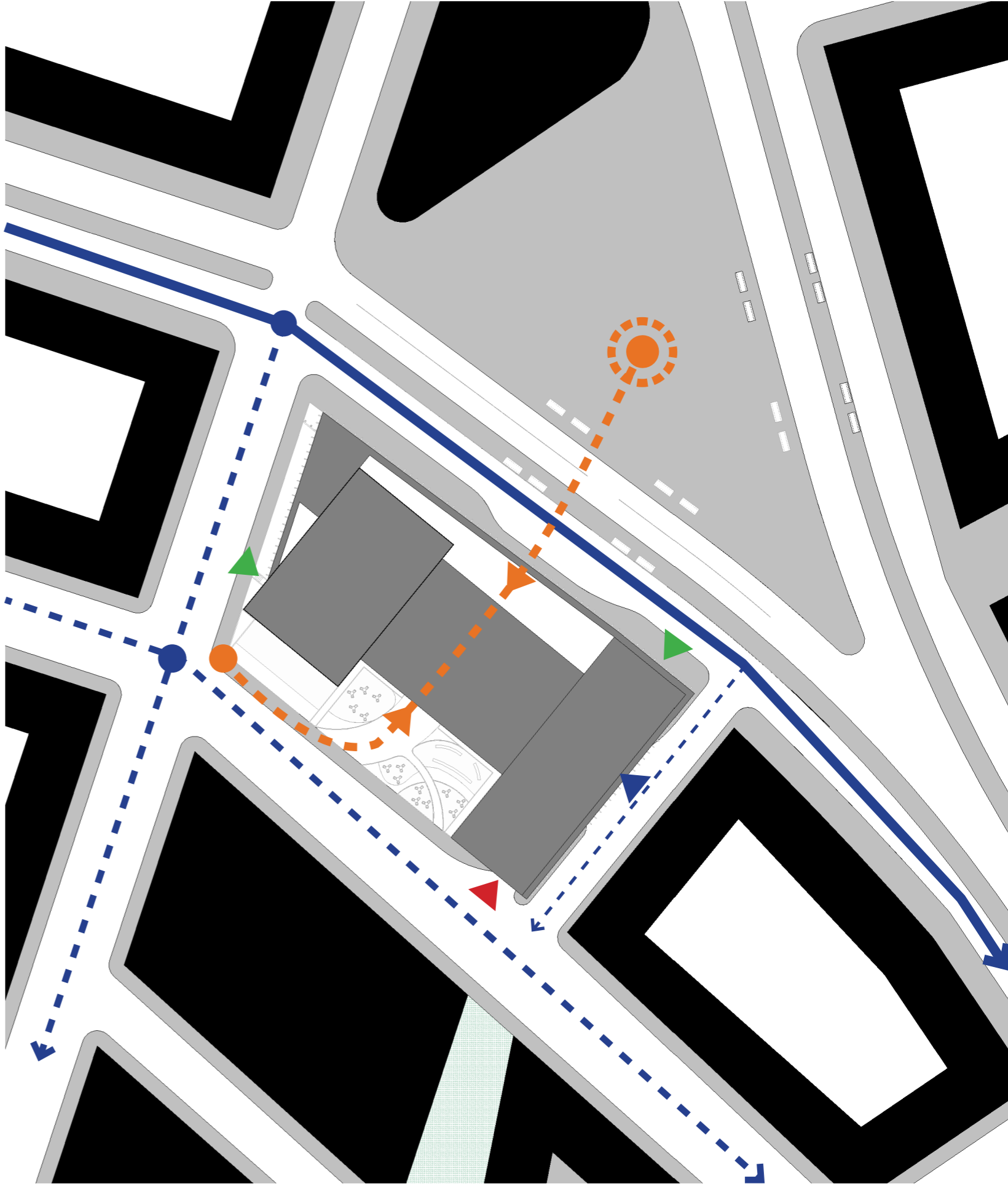
OVERVIEW

The entrances to the building were determined based on the traffic analysis:

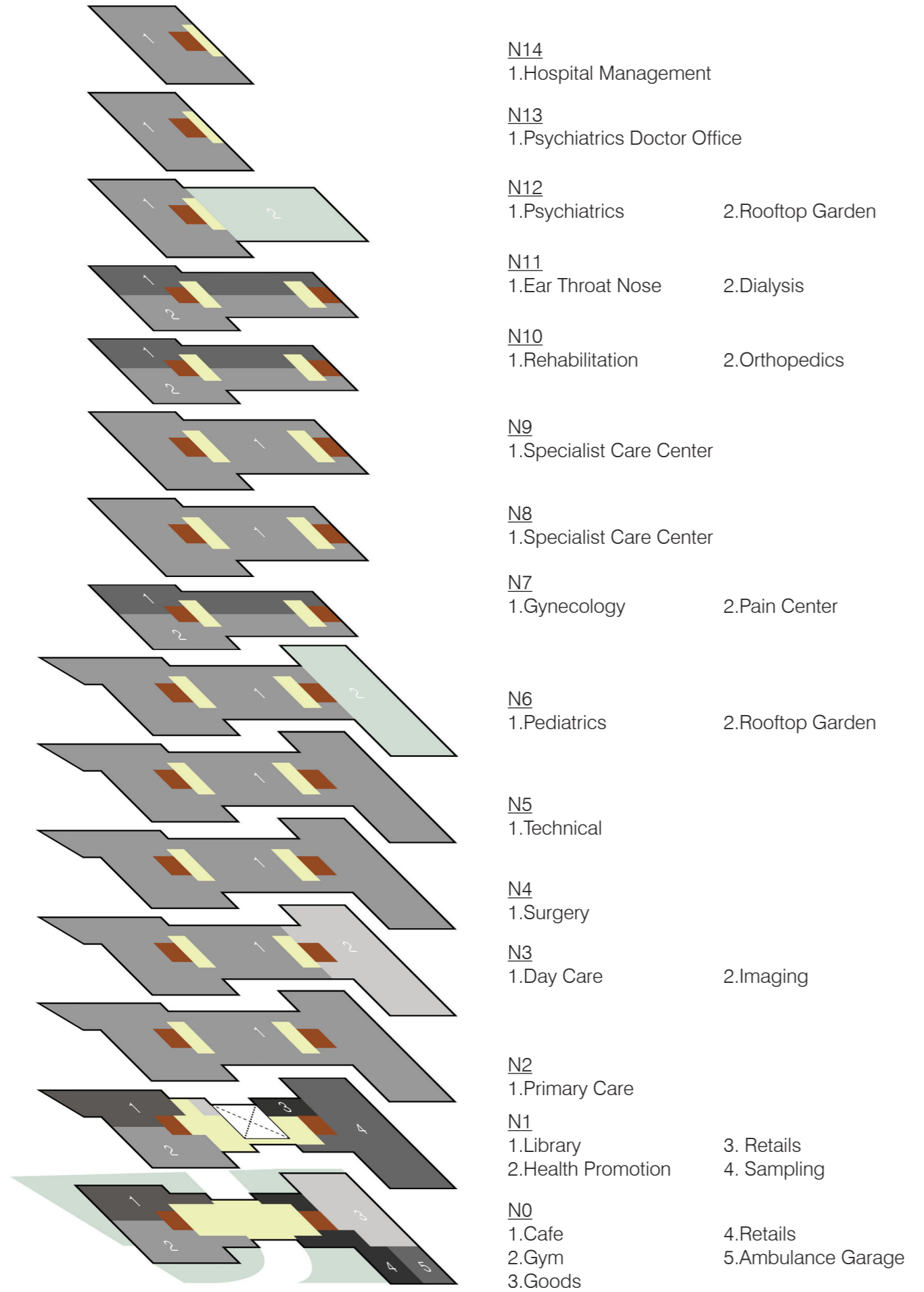
- Main Entrance for patients and visitors
 - Placed along the middle volume on the northern façade of the hospital, it faces the square and can be easily to be seen from the distance. Visitors can access the building from the courtyard as well.
- Staff Entrances
 - Two Staff Entrances were deemed necessary in order to provide an efficient workflow for the staff. One is located on the northeast corner of the building, and the second along the west side of it. With this arrangement, staff will access the building depending on the entrance's proximity to their department.
- Goods Entrance
 - Trucks will arrive to the hospital's east side into the garage and proceed to unload the goods. Since this side of the building has low traffic flow and still stays close to the main street, it's suitable for goods delivery
- Ambulance Entrance
 - The ambulance garage is located on the eastern volume with direct access to the emergency elevator and facing a low traffic street for a quick exit.



SITE PLAN
NO SCALE

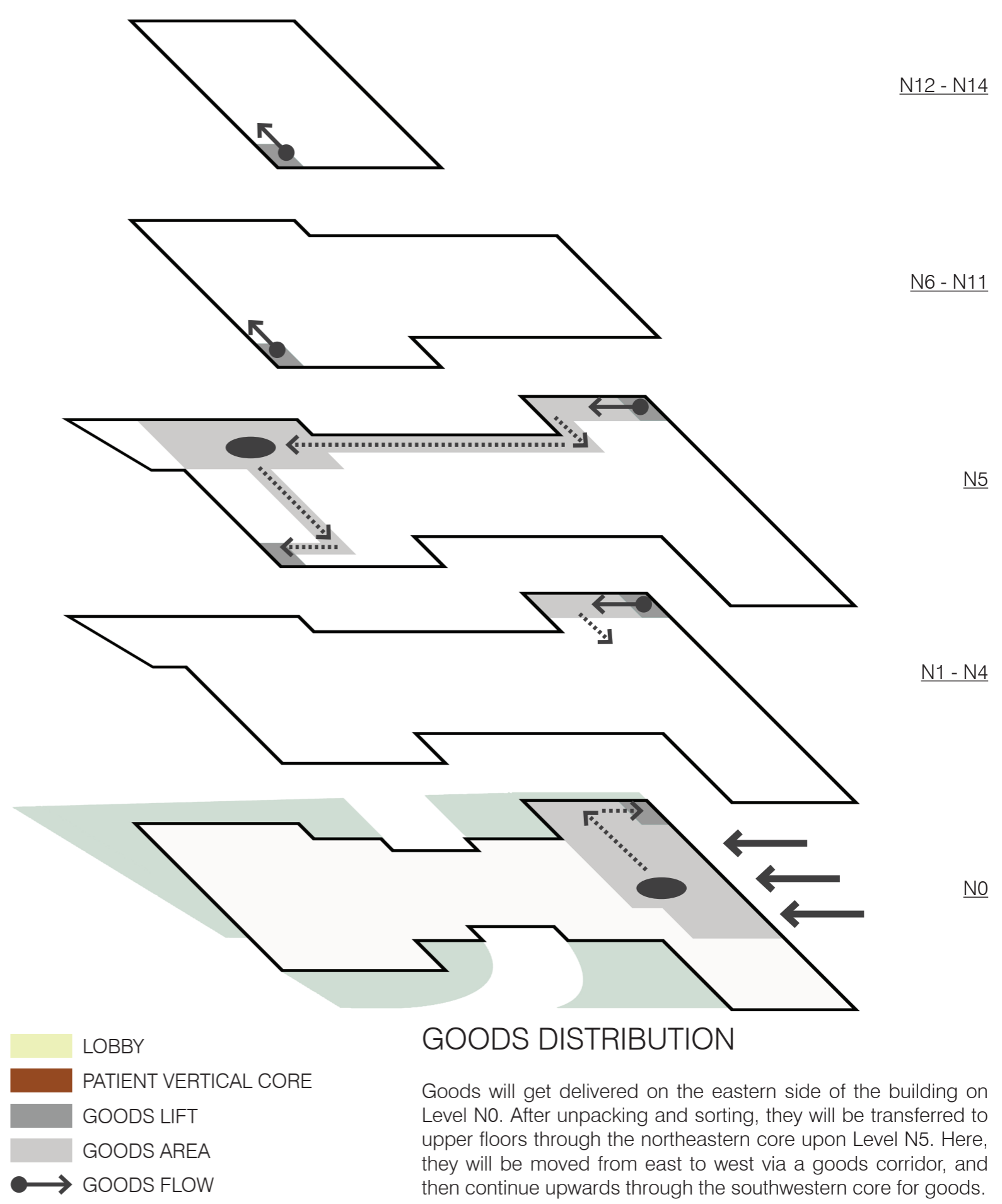


DESIGN PROGRAM



- N14**
1. Hospital Management
- N13**
1. Psychiatrics Doctor Office
- N12**
1. Psychiatrics 2. Rooftop Garden
- N11**
1. Ear Throat Nose 2. Dialysis
- N10**
1. Rehabilitation 2. Orthopedics
- N9**
1. Specialist Care Center
- N8**
1. Specialist Care Center
- N7**
1. Gynecology 2. Pain Center
- N6**
1. Pediatrics 2. Rooftop Garden
- N5**
1. Technical
- N4**
1. Surgery
- N3**
1. Day Care 2. Imaging
- N2**
1. Primary Care
- N1**
1. Library 3. Retails
2. Health Promotion 4. Sampling
- N0**
1. Cafe 4. Retails
2. Gym 5. Ambulance Garage
3. Goods

GOODS FLOW



- LOBBY
- PATIENT VERTICAL CORE
- GOODS LIFT
- GOODS AREA
- GOODS FLOW

GOODS DISTRIBUTION

Goods will get delivered on the eastern side of the building on Level N0. After unpacking and sorting, they will be transferred to upper floors through the northeastern core upon Level N5. Here, they will be moved from east to west via a goods corridor, and then continue upwards through the southwestern core for goods.

FLOOR STRUCTURE

BASIC STRUCTURE

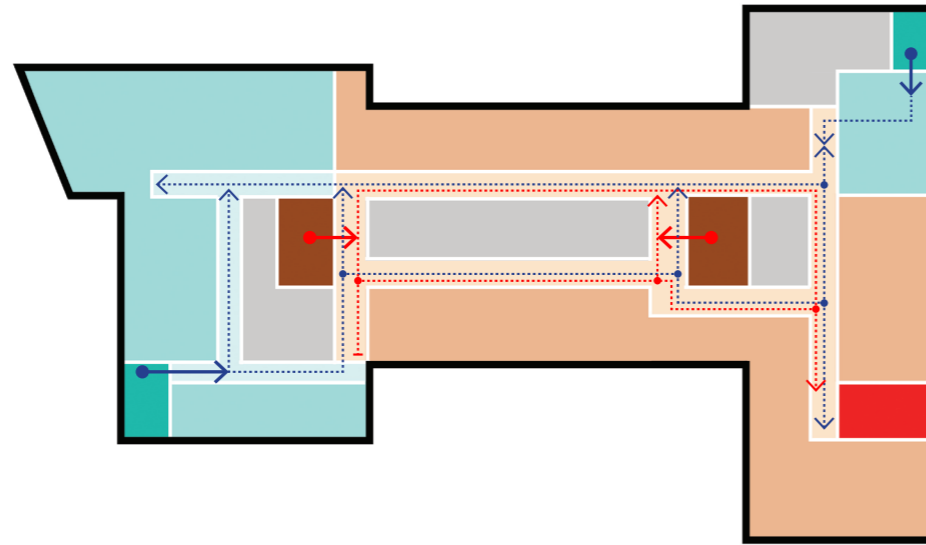
Coming up to any floor by taking one of the two main circulation cores, patients or visitors will see the reception desk right away. Then, they can access the department either through the middle volume or the eastern volume.

The location of the two cores and the departments keep the travel distances as short as possible, while the corridor structure provides a clear way finding inside the hospital, allowing patients to see the other end or locate the other circulation core regardless of where they are standing in the corridor.

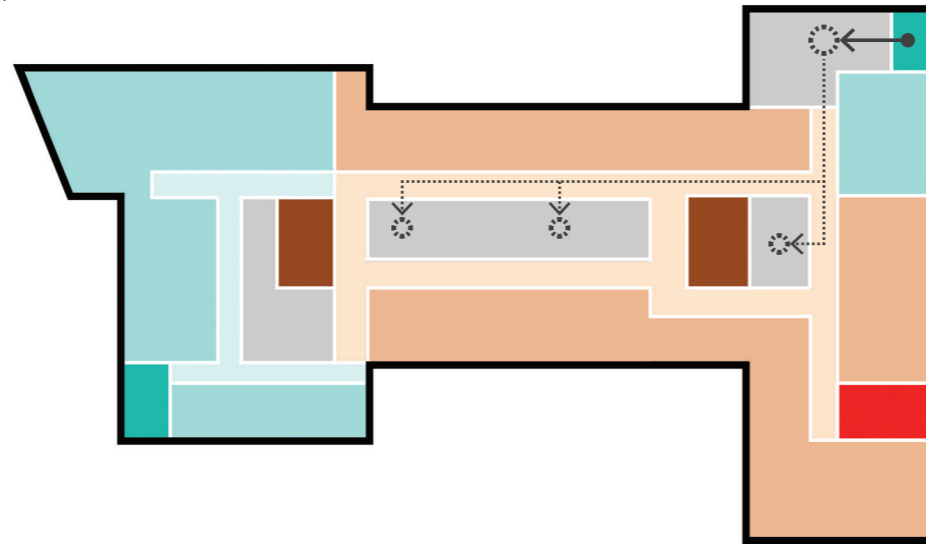
The staffs areas sit in the eastern and western wings of the hospital, built around two staff cores. This arrangement gives way to easy access to patient areas and also keeps the travel distance to a minimum.

From the Goods elevator, goods packages are first delivered to the floor's main storage right next to it, then get distributed to smaller storage rooms the dark core which are closer to patient rooms.

- PATIENT ZONE
- PATIENT CORRIDOR
- STAFF ZONE
- STAFF CORRIDOR
- LOBBY
- PATIENT VERTICAL CORE
- STAFF VERTICAL CORE
- PATIENT FLOW
- STAFF FLOW
- GOODS FLOW

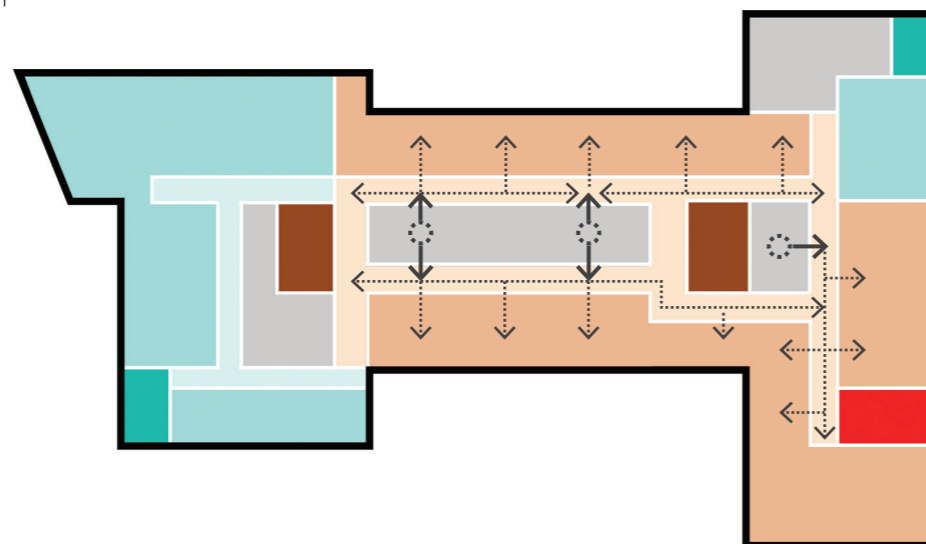


TYPICAL PLAN
NO SCALE



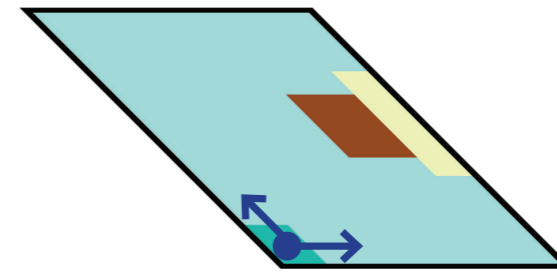
GOODS FLOW
NO SCALE

Goods go to the floor's storage rooms from goods lift

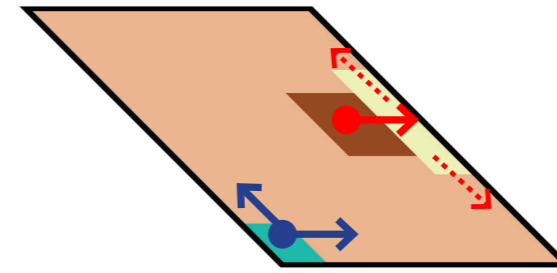


SUPPORTING SERVICES
NO SCALE

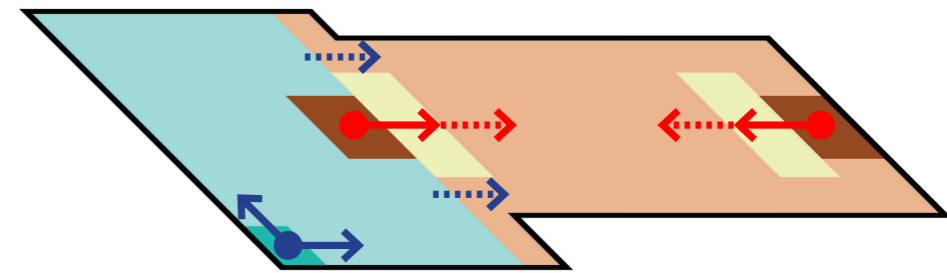
From storage rooms, goods will be then distributed to exam/patient rooms



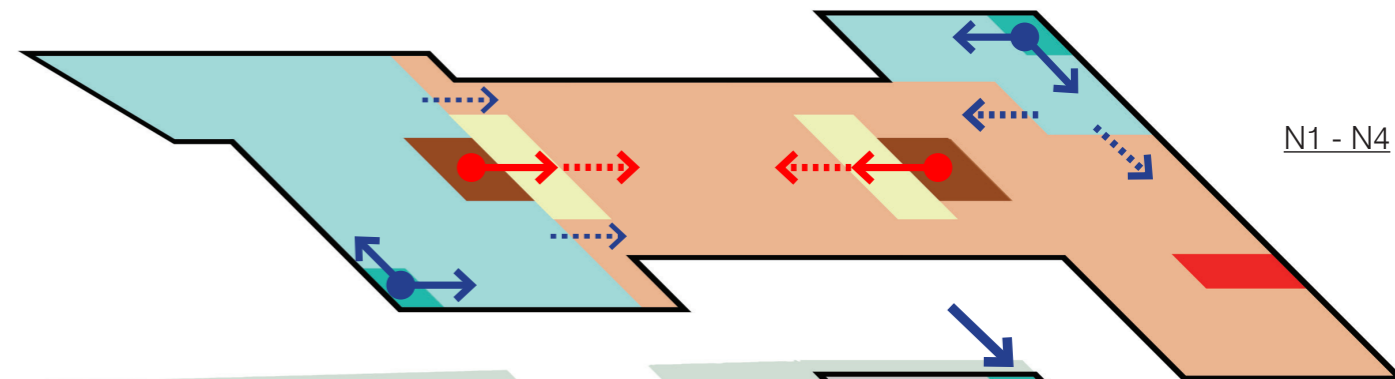
N12 - N14



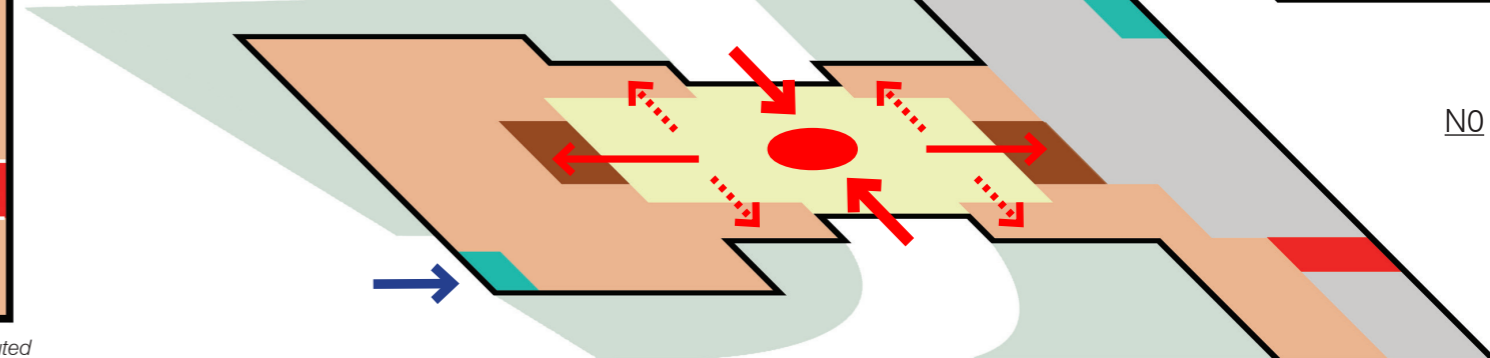
N6 - N11



N5



N1 - N4



N0

SCHEMATIC FLOORPLANS



- CAFE ■ PHARMACY ■ GOODS ■ EMERGENCY CORE ■ CIRCULATION CORE
- GYM ■ RETAIL ■ STAFF-GOODS CORE ■ SUPPORT-TECHNICAL

LEVEL N0 - GROUND FLOOR
SCALE 1:800

GROSS SURFACE: 2,911.755 SQM
RENTABLE SURFACE: 1,582.250 SQM - RETAIL + LOBBY
463.150 SQM - GOODS
173.900 SQM - OTHERS



- HEALTH PROMOTION ■ SAMPLING ■ STAFF-GOODS CORE ■ SUPPORT-TECHNICAL ■ GOODS
- RETAIL ■ STAFF ■ EMERGENCY CORE ■ CIRCULATION CORE

LEVEL N1 - HEALTH PROMOTION + SAMPLING
SCALE 1:800

GROSS SURFACE: 2,907.850 SQM
RENTABLE SURFACE: 158.200 SQM - RETAIL
1,017.250 SQM - SAMPLING
1,218.500 SQM - HEALTH PROMOTION



- PRIMARY CARE ■ STAFF-GOODS CORE ■ SUPPORT-TECHNICAL ■ GOODS
- STAFF ■ EMERGENCY CORE ■ CIRCULATION CORE

LEVEL N2 - PRIMARY CARE
SCALE 1:800

GROSS SURFACE: 3,037.000 SQM
RENTABLE SURFACE: 2,452.800 SQM - PRIMARY CARE



- DAYCARE ■ STAFF ■ EMERGENCY CORE ■ CIRCULATION CORE
- IMAGING ■ STAFF-GOODS CORE ■ SUPPORT-TECHNICAL ■ GOODS

LEVEL N3 - DAY CARE + IMAGING
SCALE 1:800

GROSS SURFACE: 3,037.000 SQM
RENTABLE SURFACE: 782.850 SQM - SHARED STAFF
811.800 SQM - IMAGING
858.150 SQM - DAY CARE

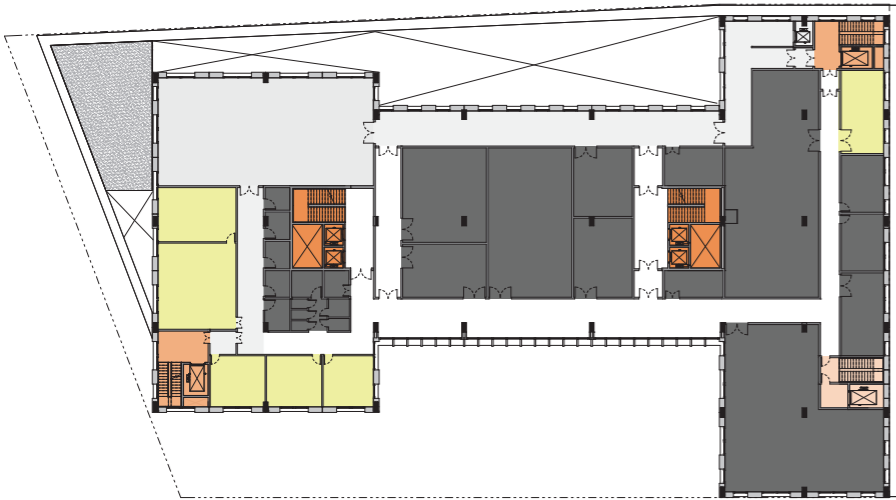


- SURGERY ■ STAFF-GOODS CORE ■ SUPPORT-TECHNICAL ■ GOODS
- STAFF ■ EMERGENCY CORE ■ CIRCULATION CORE

LEVEL N4 - SURGERY
SCALE 1:800

GROSS SURFACE: 3,037.000 SQM
RENTABLE SURFACE: 898.850 SQM - STAFF
1,553.950 SQM - SURGERY

SCHEMATIC FLOORPLANS



- STAFF
- EMERGENCY CORE
- CIRCULATION CORE
- STAFF-GOODS CORE
- SUPPORT-TECHNICAL
- GOODS

LEVEL N5 - TECHNICAL FLOOR

SCALE 1:800

GROSS SURFACE: 2,700.000 SQM

RENTABLE SURFACE: 564.150 SQM - GOODS DISTRIBUTION HUB
1,888.650 SQM - TECHNICAL



- PEDIATRICS
- STAFF-GOODS CORE
- CIRCULATION CORE
- PEDIATRICS ROOF GARDEN
- STAFF
- SUPPORT-TECHNICAL
- GOODS

LEVEL N6 - PEDIATRICS

SCALE 1:800

GROSS SURFACE: 2,667.600 SQM

RENTABLE SURFACE: 452.050 SQM - SHARED STAFF
1,106.750 SQM - PEDIATRICS
767.800 SQM - ROOF GARDEN



- PAIN CENTER
- STAFF
- SUPPORT-TECHNICAL
- GOODS
- GYNECOLOGY
- STAFF-GOODS CORE
- CIRCULATION CORE

LEVEL N7 - GYNECOLOGY + PAIN CENTER

SCALE 1:800

GROSS SURFACE: 2,667.600 SQM

RENTABLE SURFACE: 464.450 SQM - SHARED STAFF
576.760 SQM - GYNECOLOGY
545.600 SQM - PAIN CENTER



- SPECIALIST ADULT CARE CENTER
- STAFF-GOODS CORE
- CIRCULATION CORE
- STAFF
- SUPPORT-TECHNICAL
- GOODS

LEVEL N8 - SPECIALIST ADULT CARE CENTER

SCALE 1:800

GROSS SURFACE: 1,766.800 SQM

RENTABLE SURFACE: 452.050 SQM - SHARED STAFF
1,106.750 SQM - SPECIALIST ADULT CARE CENTER



- SPECIALIST ADULT CARE CENTER
- STAFF-GOODS CORE
- CIRCULATION CORE
- STAFF
- SUPPORT-TECHNICAL
- GOODS

LEVEL N9 - SPECIALIST ADULT CARE CENTER

SCALE 1:800

GROSS SURFACE: 1,766.800 SQM

RENTABLE SURFACE: 452.050 SQM - SHARED STAFF
1,106.750 SQM - SPECIALIST ADULT CARE CENTER

SCHEMATIC FLOORPLANS



REHABILITATION STAFF SUPPORT-TECHNICAL GOODS
 ORTHOPEDICS STAFF-GOODS CORE CIRCULATION CORE

LEVEL N10 - REHABILITATION + ORTHOPEDICS SCALE 1:800

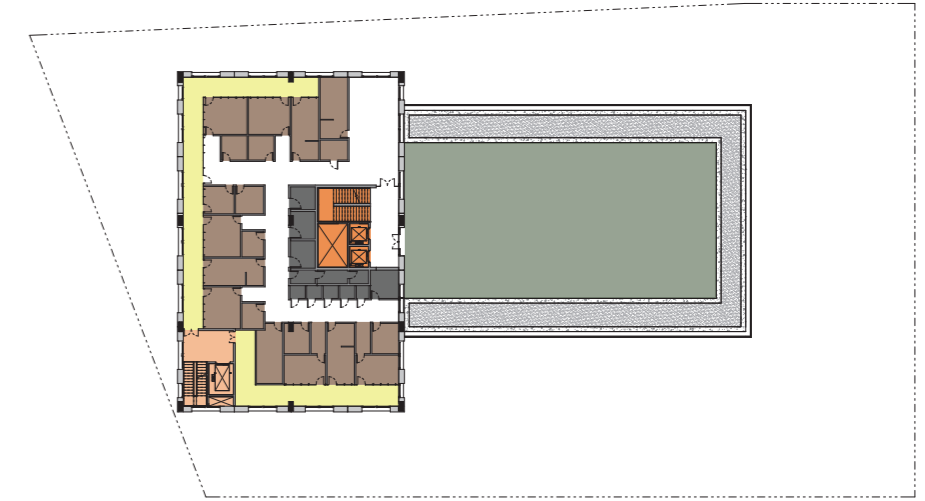
GROSS SURFACE: 1,766.800 SQM
 RENTABLE SURFACE: 454.050 SQM - SHARED STAFF
 576.750 SQM - REHABILITATION
 530.000 SQM - ORTHOPEDICS



DIALYSIS STAFF SUPPORT-TECHNICAL GOODS
 EAR, NOSE & THROAT STAFF-GOODS CORE CIRCULATION CORE

LEVEL N11 - EAR NOSE THROAT + DIALYSIS SCALE 1:800

GROSS SURFACE: 1,766.800 SQM
 RENTABLE SURFACE: 436.450 SQM - SHARED STAFF
 530.000 SQM - EAR, NOSE AND THROAT
 592.350 SQM - DIALYSIS



PSYCHIATRICS STAFF-GOODS CORE CIRCULATION CORE PSYCHIATRY ROOF GARDEN
 STAFF SUPPORT-TECHNICAL GOODS

LEVEL N12 - PSYCHIATRY SCALE 1:800

GROSS SURFACE: 1,408.500 SQM
 RENTABLE SURFACE: 734.550 SQM - PSYCHIATRY (EXAMINATION)
 535.650 SQM - ROOF GARDEN



PSYCHIATRY (STAFF) EMERGENCY CORE CIRCULATION CORE
 STAFF-GOODS CORE SUPPORT-TECHNICAL GOODS

LEVEL N13 - PSYCHIATRY (ADMIN) SCALE 1:800

GROSS SURFACE: 864.000 SQM
 RENTABLE SURFACE: 734.550 SQM - PSYCHIATRY (ADMINISTRATION)

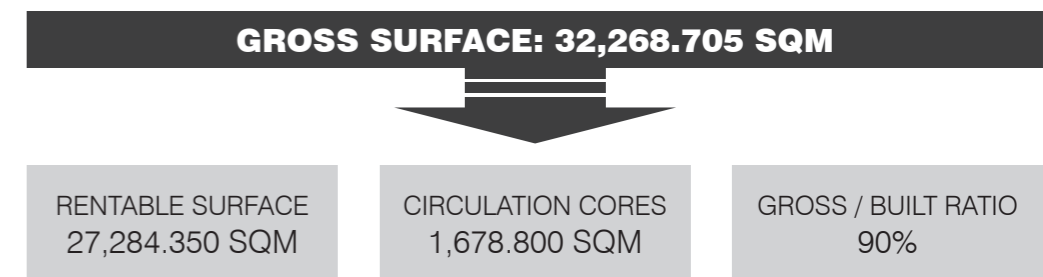


STAFF EMERGENCY CORE CIRCULATION CORE
 STAFF-GOODS CORE SUPPORT-TECHNICAL GOODS

LEVEL N14 - MANAGEMENT + ADMINISTRATION SCALE 1:800

GROSS SURFACE: 864.000 SQM
 RENTABLE SURFACE: 734.550 SQM - MANAGEMENT (ADMINISTRATION)

PROJECT OVERVIEW



GROSS SURFACE:

- INCLUDES EXTERIOR AREAS, BRACE, LANDSCAPE AND GREEN ROOFS.

RENTABLE SURFACE:

- INCLUDES INTERIOR CORRIDORS BY DEPARTMENT AND TECHNICAL ROOMS ON EACH FLOOR.

LEVEL N0

GROUND FLOOR

The main lobby stands right in the middle of the three volumes, and serves as a transition area leading people from the outside into the courtyard. In terms of way finding, it is easy to get to the two main circulation cores which are visible even from the landscape in front of the main entrance. People can check at the reception booth to be sure which elevator they should use to get to a specific department upstairs.

The Café Shop, Gym and other retail spaces contribute to turn this floor into a populated public area with visual access to the busy square or the calm green courtyard.



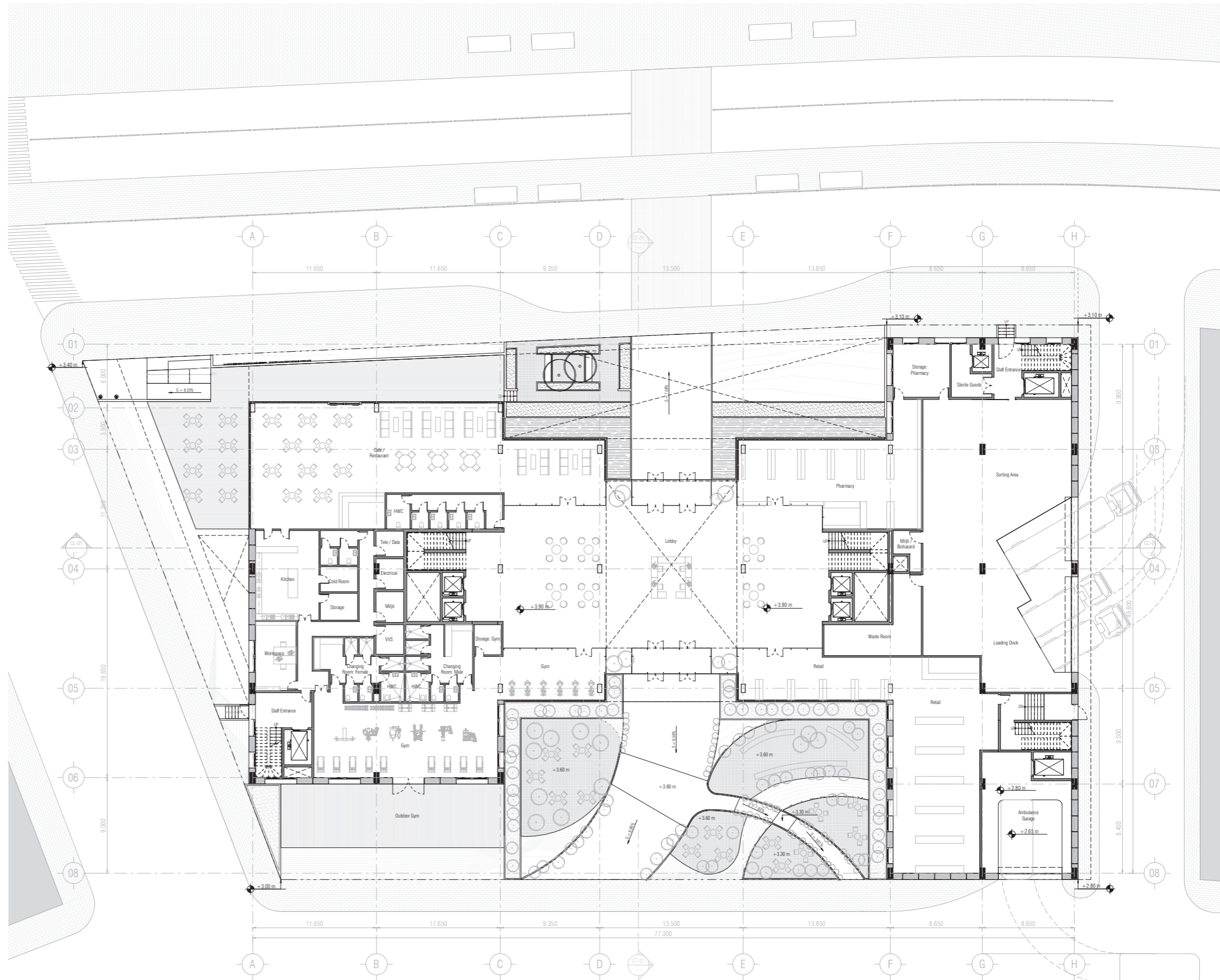
- CAFE
- PHARMACY
- GOODS
- EMERGENCY CORE
- CIRCULATION CORE
- GYM
- RETAIL
- STAFF-GOODS CORE
- SUPPORT-TECHNICAL

SCHEMATIC FLOORPLAN

NO SCALE



GROUND FLOOR LOBBY



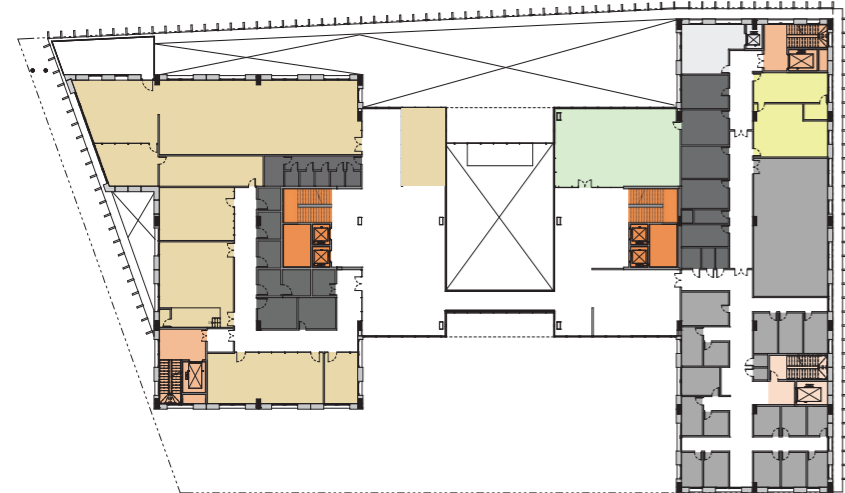
GROUND FLOOR
SCALE 1:400

LEVEL N1

HEALTH PROMOTION + SAMPLING

Self check-up, Library and Health promotion department are in the west wing, whereas the east one houses Retail and Sampling Department. The atrium allows a visual connection with the lobby on Ground Floor, and doubles the normal ceiling height giving the lobby a grandeur character. A bridge was added across the void to unify the whole floor plan.

The Health Promotion department is a new function into the design program. The purpose of having it is to create an educational place for people to come and attend seminars, lectures or workshops to gain knowledge about how to lead a healthier life.



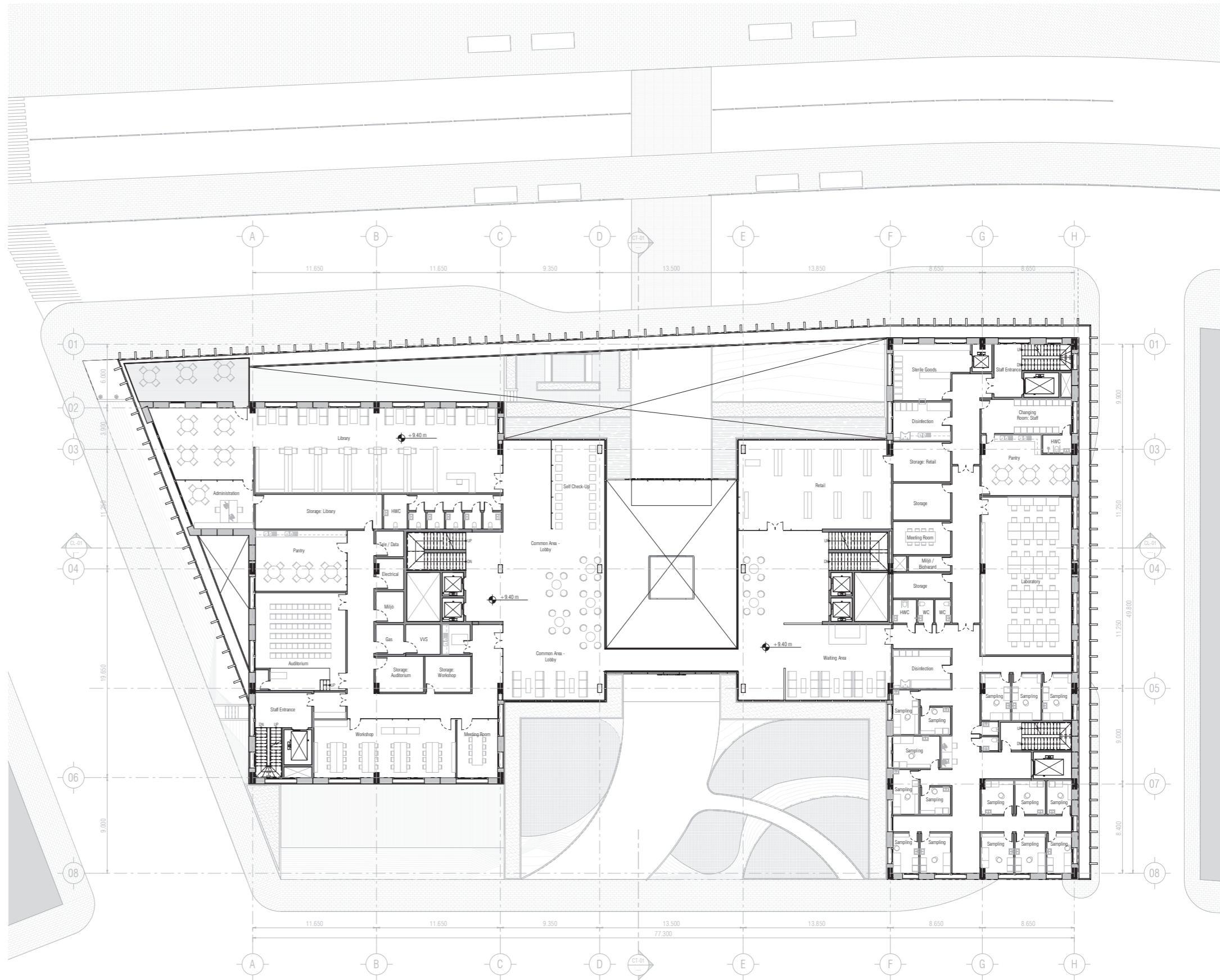
- HEALTH PROMOTION
- SAMPLING
- STAFF-GOODS CORE
- SUPPORT-TECHNICAL
- GOODS
- RETAIL
- STAFF
- EMERGENCY CORE
- CIRCULATION CORE

SCHEMATIC FLOORPLAN

NO SCALE



GROUND FLOOR LOBBY FROM N1



LEVEL N1
SCALE 1:400

LEVEL N3

DAY CARE + IMAGING

Regarding Day Care, we provide single-bed and double-bed patient rooms to give them the opportunity to choose what suits them better. There is one elevator placed in the middle dark core for dedicated use between N3 and N4 (Surgery Floor) in order to ease the patient transfer process from post-surgery to their own rooms.

Imaging is in the east volume and like Daycare, it has its own lobby, reception area, waiting area but the two departments are connected to support each other function-wise.



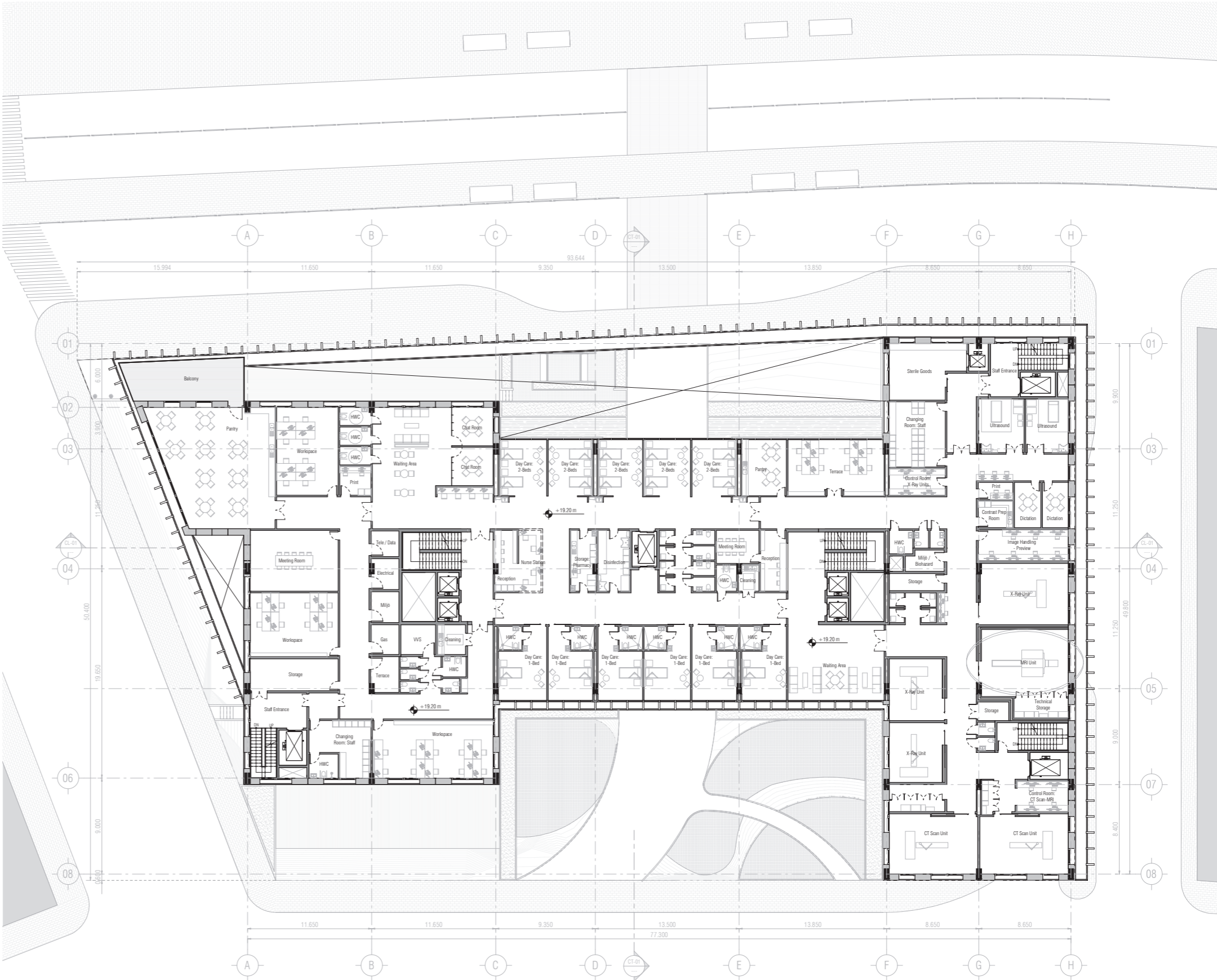
- DAYCARE
- STAFF
- EMERGENCY CORE
- CIRCULATION CORE
- IMAGING
- STAFF-GOODS CORE
- SUPPORT-TECHNICAL
- GOODS

SCHEMATIC FLOORPLAN

NO SCALE



DAY CARE ROOM - SINGLE BED



LEVEL N3
SCALE 1:400

LEVEL N4

SURGERY FLOOR

Doctors, coming from their office located on the west volume, access the *Clean Zone* through a set of locks in the middle part of the building. Then, they proceed to the disinfection room and then change into their surgery gowns. After that, they go through another set of locks to enter the *Sterile Zone* with six Operation Rooms and one Endo-Gyno Operation Room.

Pre-Post Op Rooms are located within the middle volume as open plan rooms and connected with the level below through a dedicated lift. N4 is supplied by an inclusive sterile goods cycle.

The emergency elevator sits in between the operation rooms and goes right down to ambulance garage on ground floor.



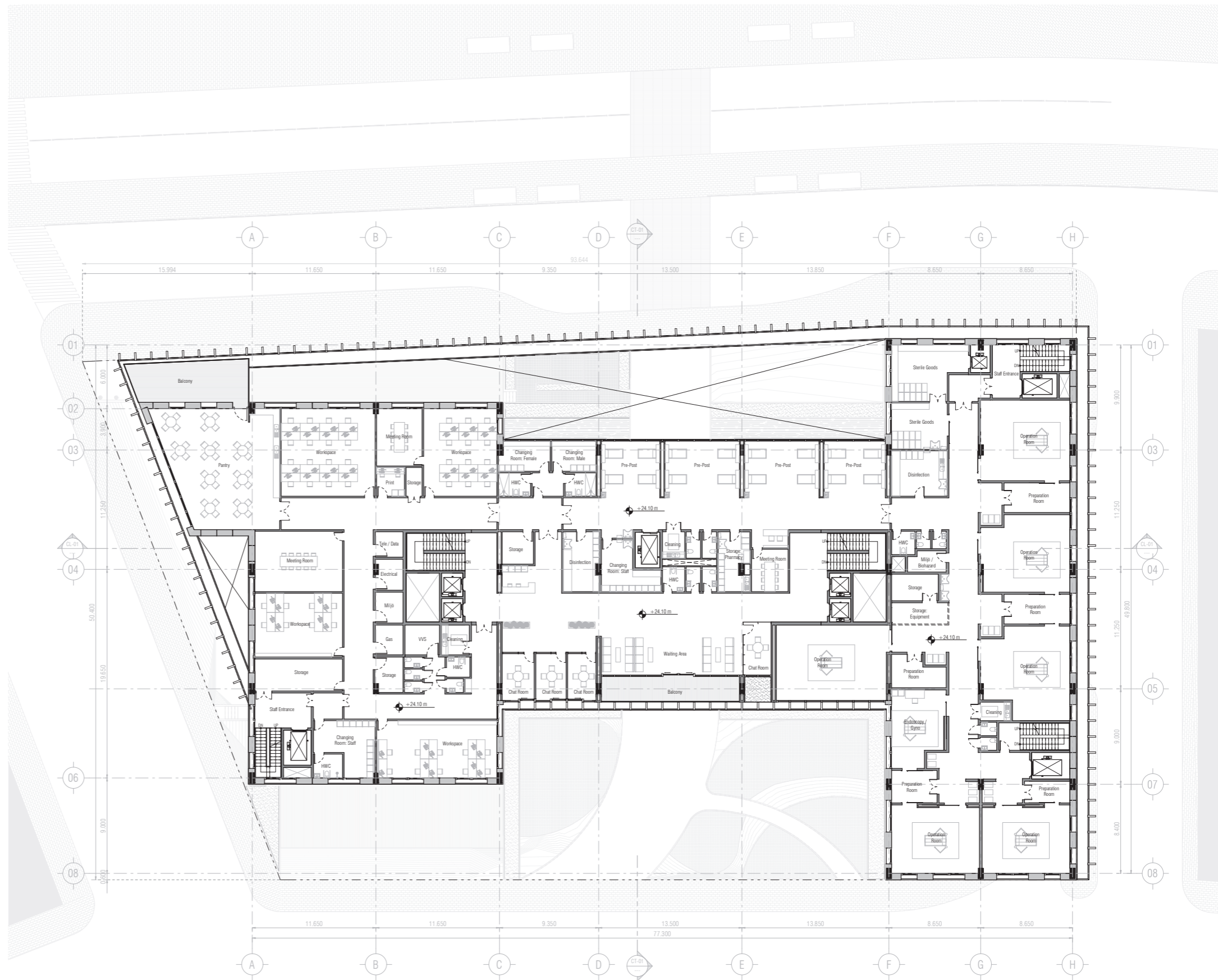
- SURGERY
- STAFF-GOODS CORE
- SUPPORT-TECHNICAL
- GOODS
- STAFF
- EMERGENCY CORE
- CIRCULATION CORE

SCHEMATIC FLOORPLAN

NO SCALE



WAITING ROOM - SURGERY FLOOR



LEVEL N4
SCALE 1:400

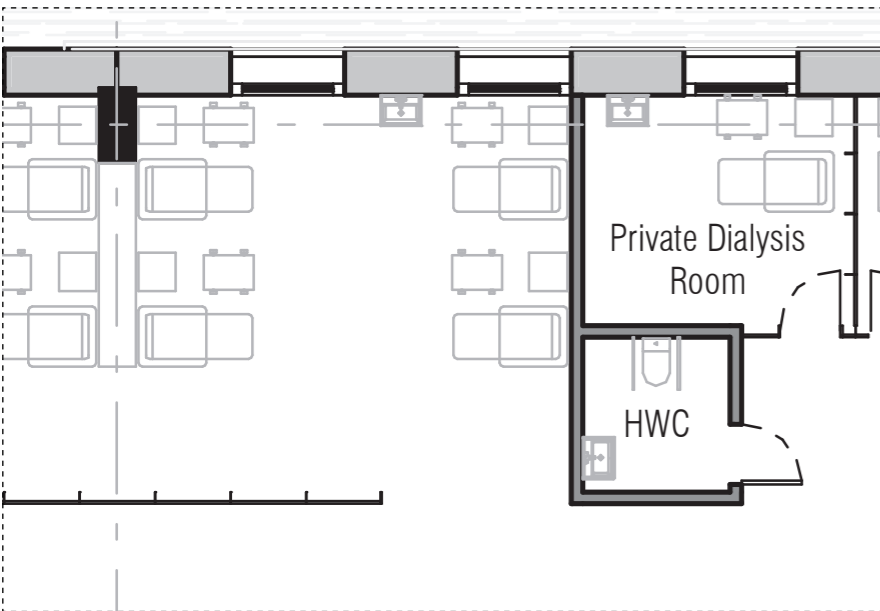
LEVEL N11

EAR NOSE THROAT + DIALYSIS

In order to provide the patient the opportunity to integrate, communicate and to avoid the sense of captivity commonly associated with this type of facilities, we decided to introduce two types of dialysis rooms: private and lounge. Both options were designed taking as point of departure glass partitions to have a clear connection with the surroundings but yet adding some privacy to the single rooms. As for the *Dialysis Lounge*, no interior partitions were considered as we envision this room as a space for communication and dynamism.

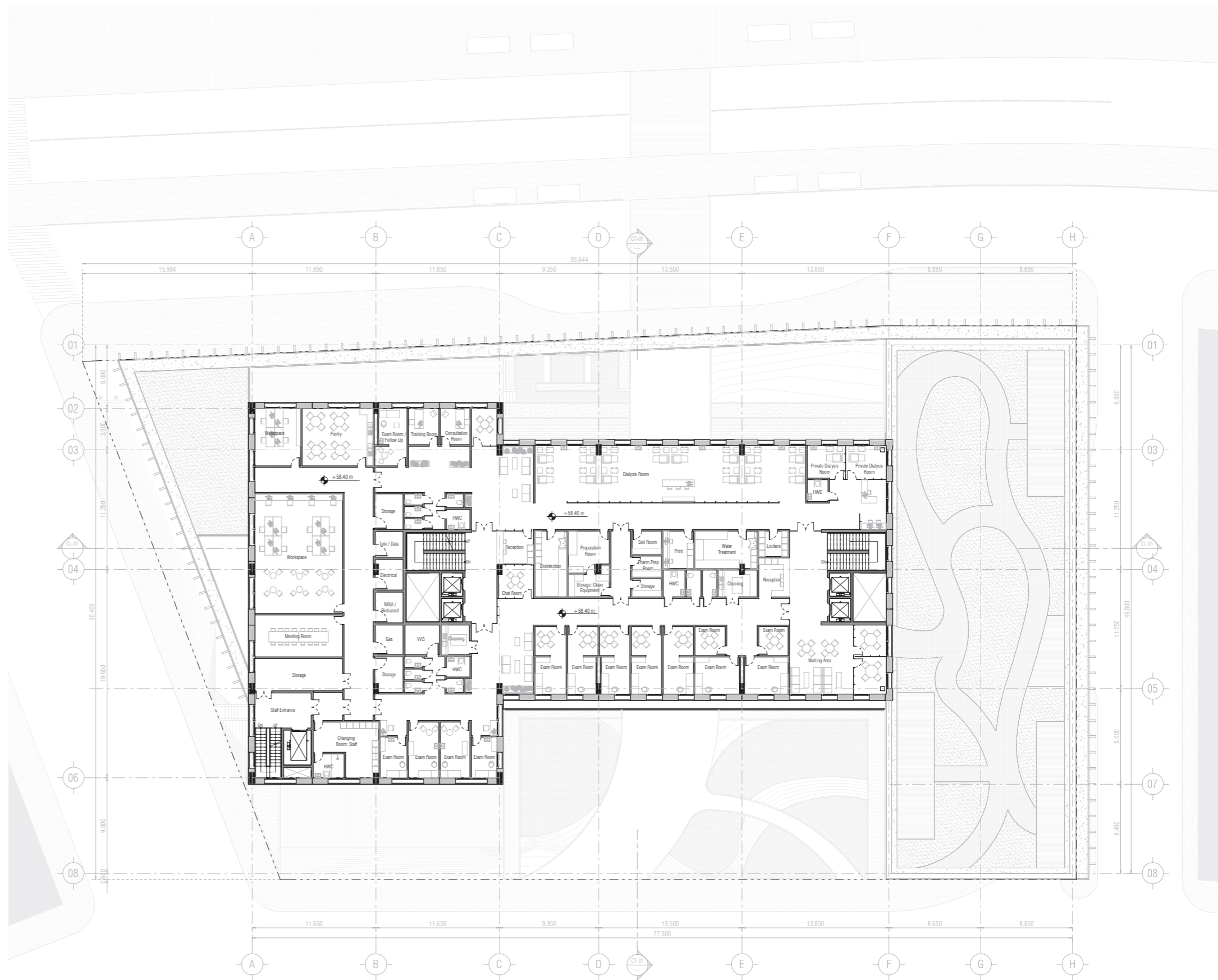


■ DIALYSIS ■ STAFF ■ SUPPORT-TECHNICAL ■ GOODS
■ EAR, NOSE & THROAT ■ STAFF-GOODS CORE ■ CIRCULATION CORE
SCHEMATIC FLOORPLAN
 NO SCALE



DETAIL DIALYSIS ROOMS - LEVEL N11

SCALE 1:100



LEVEL N11

SCALE 1:400

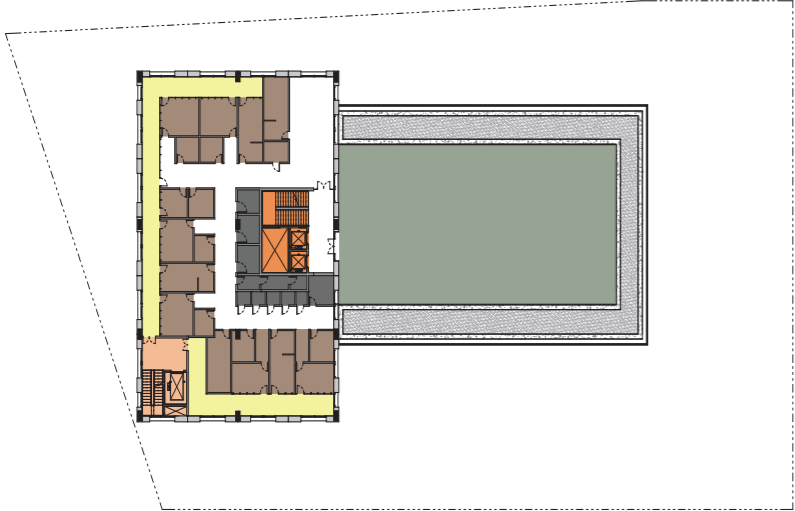
LEVEL N12 - N13

PSYCHIATRY FLOOR

The Psychiatry Department is divided into two levels. Level N12 houses the basic Patient - Doctor encounters through several types of Examination Rooms supported by an escape corridor on the back leading to staff's communication core; and Chatting Spaces.

Level 13 provides each doctor with a private office to work on their daily journals or other errands related with the department. This department features a dedicated outdoor garden with access on the patient's level.

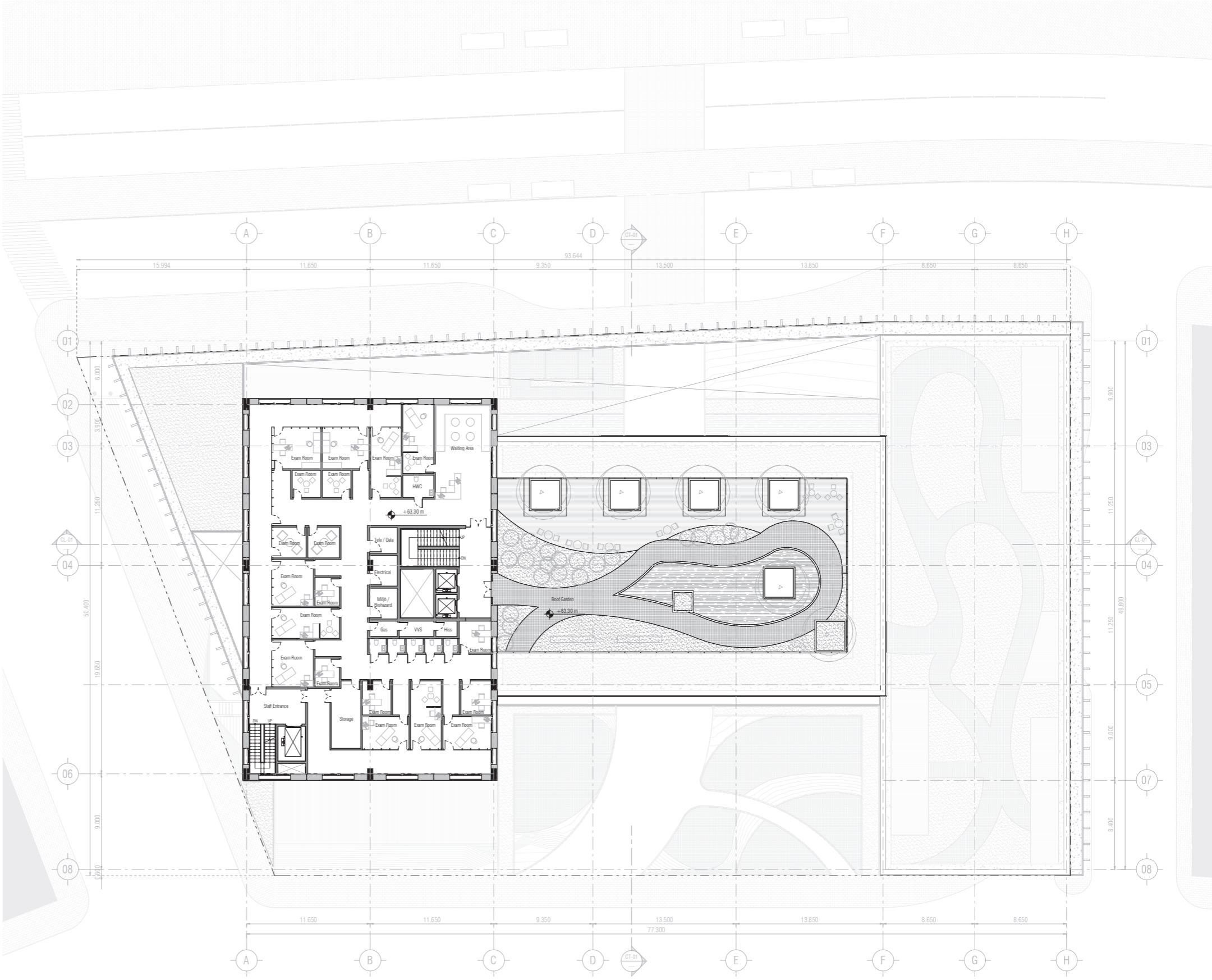
The garden is fenced by 4.50 m height mesh panel system which allows visual connection to the surroundings but also complies with the safety regulations regarding this department.



SCHEMATIC FLOORPLAN N12
NO SCALE

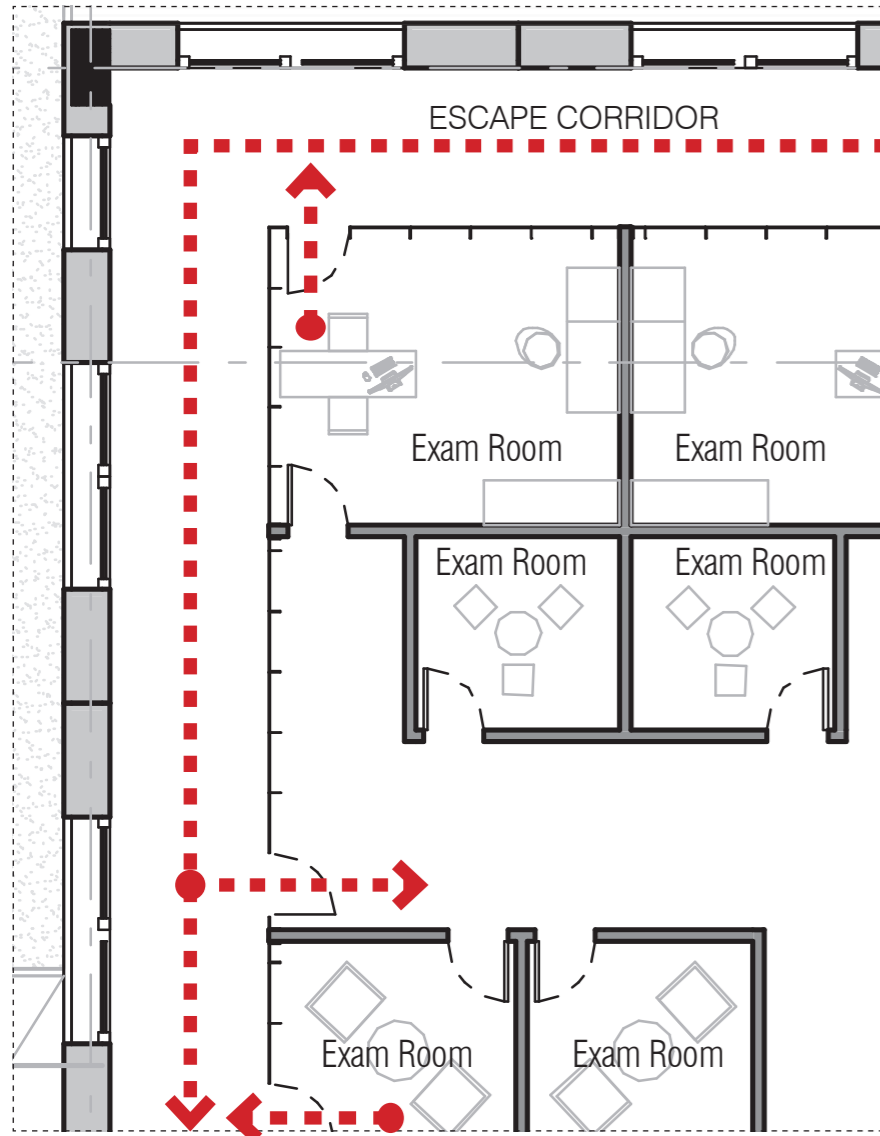


PSYCHIATRY ROOF GARDEN



LEVEL N12
SCALE 1:400

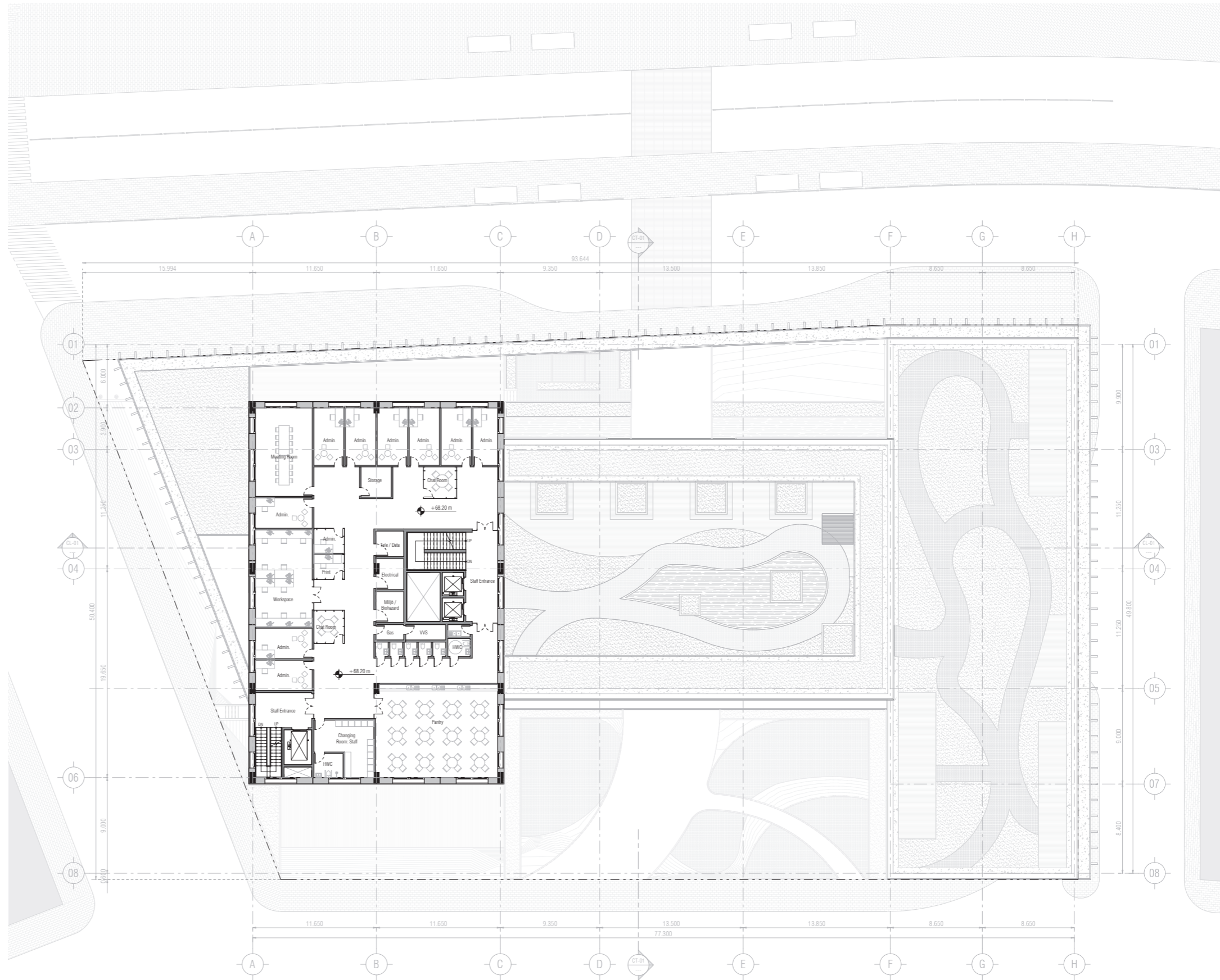
LEVEL N13



DETAIL EXAM ROOMS - N12
SCALE 1:100



■ PSYCHIATRY (STAFF)
 ■ EMERGENCY CORE
 ■ CIRCULATION CORE
■ STAFF-GOODS CORE
 ■ SUPPORT-TECHNICAL
 ■ GOODS
SCHEMATIC FLOORPLAN
 NO SCALE



LEVEL N13
SCALE 1:400

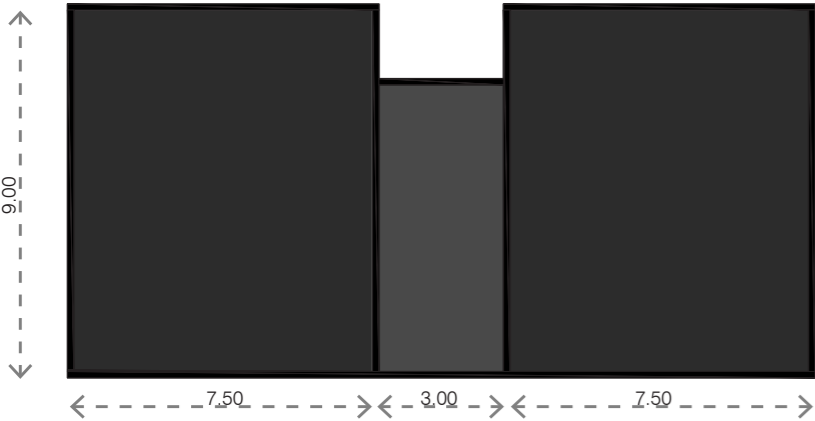
STRUCTURE

GENERALITY

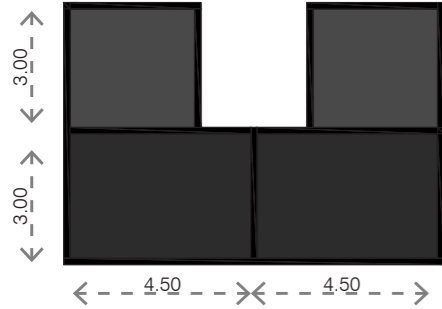
We started with a basic 1.50 X 1.50 M square to set the main drafting lines. This measurement enables various possibilities of room combinations, which fulfils the needs of the hospital in terms of functionality and generality. The grid system of the hospital was then developed based on this.

Below are examples of how we can achieve an assortment of room compositions serving different departments thanks to the 1.50 meter measurement.

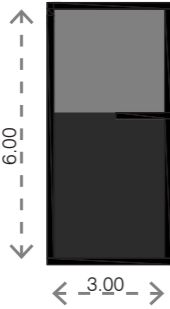
The floor plan is also capable of handling extreme future changes to its room layout. The middle volume has less general quality due to constraints from the dark core in the middle, whereas the other two volumes can be re-configured up to 100%



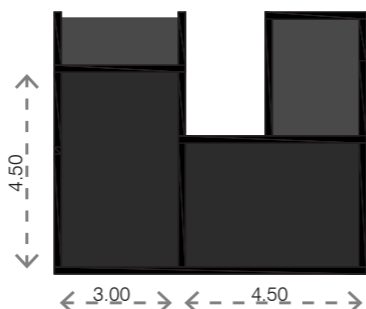
Two operation theaters and preparation room



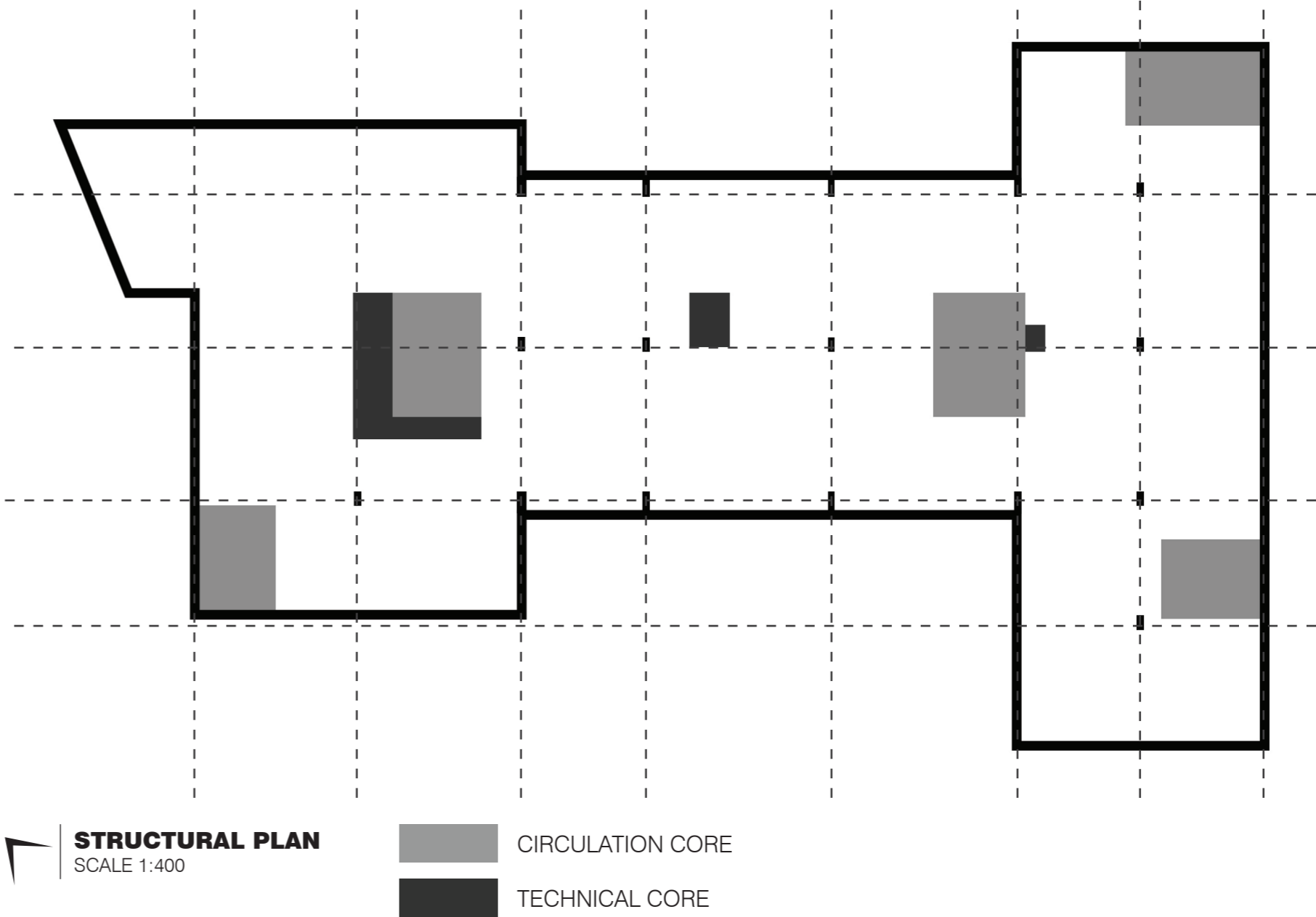
Sampling / Exam rooms with smaller units



Exam room with meeting area



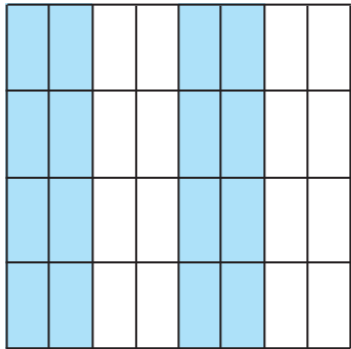
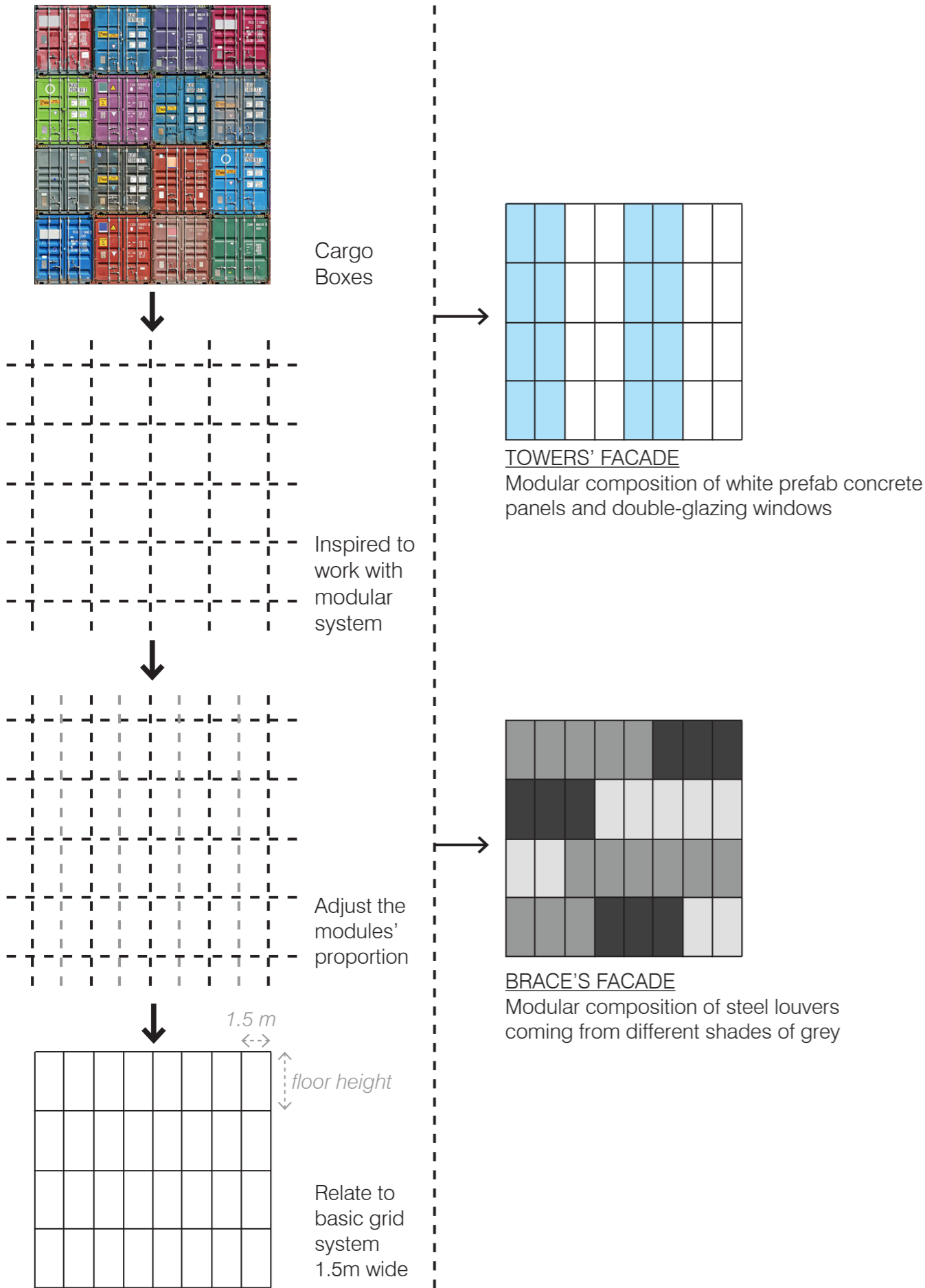
Two examination rooms, chat room and workstation



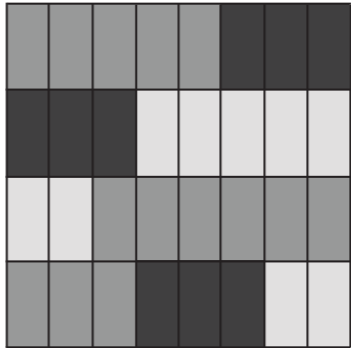
STRUCTURAL PLAN
SCALE 1:400

- CIRCULATION CORE
- TECHNICAL CORE

FAÇADES: DESIGN GUIDELINES



TOWERS' FAÇADE
Modular composition of white prefab concrete panels and double-glazing windows



BRACE'S FAÇADE
Modular composition of steel louvers coming from different shades of grey



VIEW COMING FROM NORDSTAN TO THE FRIHAMNEN DISTRICT

INSPIRATION

The façade idea was inspired by the image of ship cargo boxes stacked on top of the others, from which we translated to a modular system of 1.50 meters wide panels sitting side by side horizontally and vertically. The 1.50 m measurement came from the attempt to strengthen the generality quality as explained on previous pages. There is a variety of panel types including solid for wall, transparent for windows.

The brace was added to the 3-volume composition as a 4th element to bring down the size to a more human scale. It features a louvered skin with 1.50 meters between each vertical element, in consonance with the existing modules for the main façade. We emphasized the cargo box inspiration on this element the most as it reflects in the way multiple shades of grey were introduced on the louvers to create different rhythms.

The material selected for the solid panel is white pre-fabricated concrete panels and powder-coated steel plates louvers.

FAÇADES



NORTH FAÇADE
SCALE 1:800



SOUTH FAÇADE
SCALE 1:800



EAST FAÇADE
SCALE 1:800



WEST FAÇADE
SCALE 1:800



VIEW FROM THE COURTYARD

MODULARITY

The placement of the modular windows follows one of the design guidelines which is stressing the verticality of the architecture.

The façade of the three towers is also kept to the most minimalistic level in order to emphasize the height transition of the towers.

SECTIONS



SECTION CL-01
SCALE 1:800



SECTION CT-01
SCALE 1:800

CONNECTIVITY

The long section indicates that two main vertical communication cores connect the three volumes effectively. They fulfill their purpose of reducing the travel distance and establishing a clear way-finding structure in the building. The short section illustrates how the building works with landscapes and the square. The green area in front of the building acts as a buffer zone between the square and Ground Floor, underneath an outdoor atrium created by the brace. The courtyard behind the tower is more hidden, but since the lobby is all glazed, it is possible to get a glimpse of this calm green area from the main entrance

SCALE

In order to enable a wide range of possibilities in terms of future technology and expansion, we decided that the distance from slab to slab on each level should be 4.90 meters, except for ground floor, where the measurement is 5.50 meters. On the main lobby, the total height is 10.40 meters.



VIEW FROM THE ATRIUM



URBAN SECTION



FRIHAMNEN SJUKHUSET
- THE HARBOUR HOSPITAL

2016 DESIGN COMMISSION - GÖTEBORG, SE

TATARI PHAN MARTINEZ

CHALMERS SCHOOL OF ARCHITECTURE • GOTHENBURG, SWEDEN