

# myllan

## dementia village

group 1:  
Haihong Huang  
Jonas Delin  
Klara Moene-Omholt

# concept



## movement

accessibility

safety and security

exercise

comfort



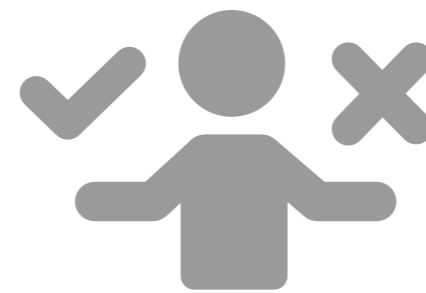
## community

visitors

facilities

staff

relationship



## independence

service

integrity

orientation



## stimulation

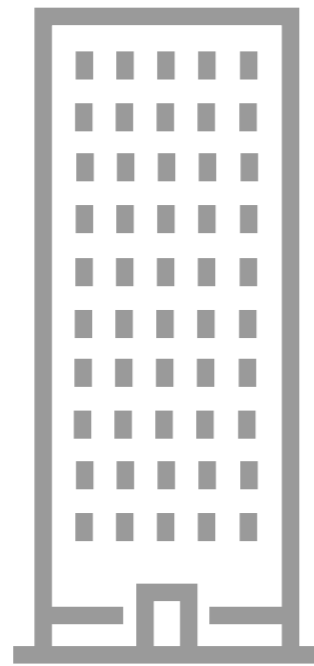
sensory

activities

green environment

# village typology

Housing adapted to different lifestyles in an organic village.



high rise

+



building block

+



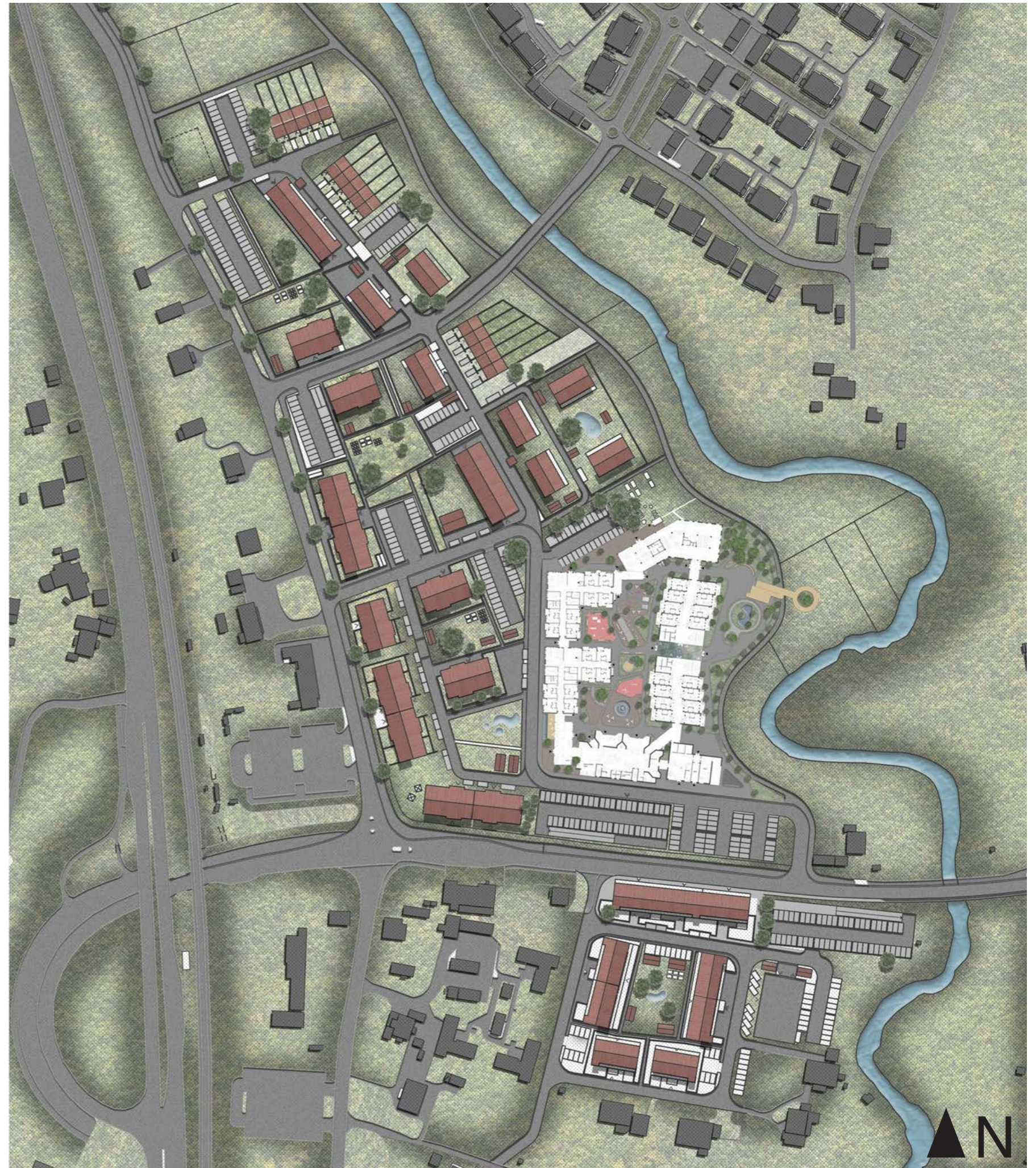
town house

# the village

On the site of the dementia village neighbourhood, typologies are historically characterized by swedish agriculture. Houses were often organized around a large yard with both private and public space where several households lived together. Using this simple and well-known form creates one strong and clear identity in the area as developed in different typologies.

With a modern reinterpretation of the farmhouse and its outbuildings and barns give the area a clear identity. Volume repeated in different scales, number of floors and direction to provide variation within one common design language. Further variation is created by wood as facade materials and are used in different colors and forms. The selected colors give the area an unique character and a cohesive whole.

1:2000 (A3)



# the village

The dementia village Myllan opens up to the neighbourhood through a welcoming entrance, facing the station and inviting visitors from the main road on the south-west corner of the site. Well inside you are greeted by the village plaza, an urban space where the residents can socialize with each other or visit the hairdresser. The plaza is characterized by a big fountain that provides the south courtyard with a tranquil ambiance. Above the village plaza you will find a children's-playground as well as a pavilion, a social space shared by both visitors and residents, that part the two courtyards.

The northern courtyard provides a stimulating space for the residents. On the boule court the playful ones can challenge each other over a game. In the planter garden one can smell the flowers, feel the grass under your feet or even grow your own vegetables in the small greenhouses. The residents can stay active in the exercise area while being outside at the same time. Towards the upper part, you can find some outdoor seating in the transition to the village restaurant. The restaurant provides the village with pleasant meals and the bar is always open for socializing or private events. The restaurant also functions as a community house and has a space for performances, movie nights or bingo-evenings.

In the garden to the east one can find a private and secluded natural space where you can find both a bird watching platform that stretches out to the river and a small forest walk with quiet seating for private conversations and peaceful reflection.

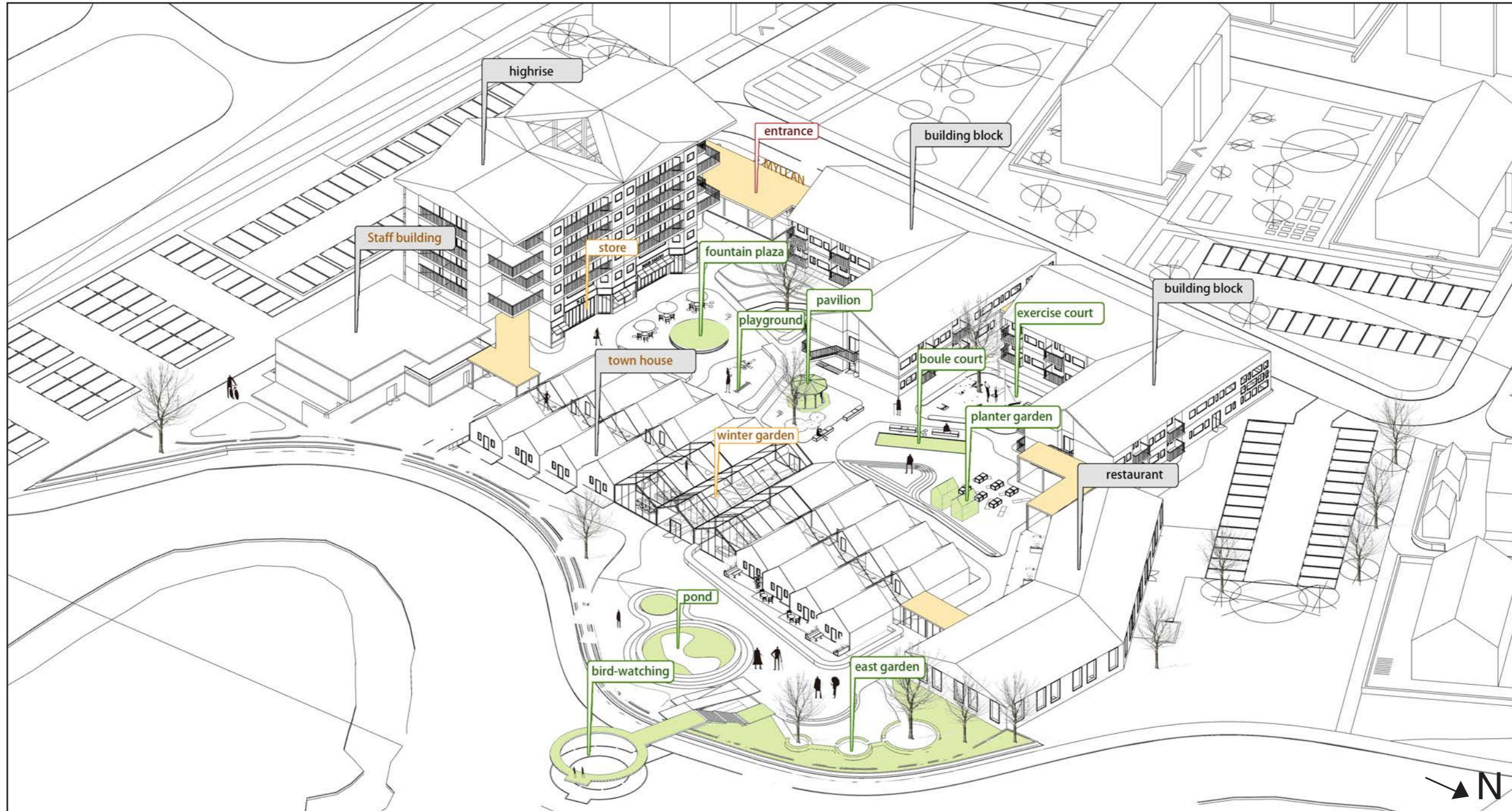
1:500 (A3)



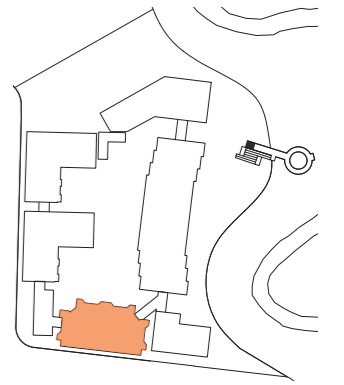
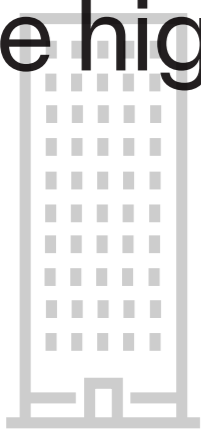
# the village entrance



# village overview



# the high rise



## Facades 1:500 (A3)



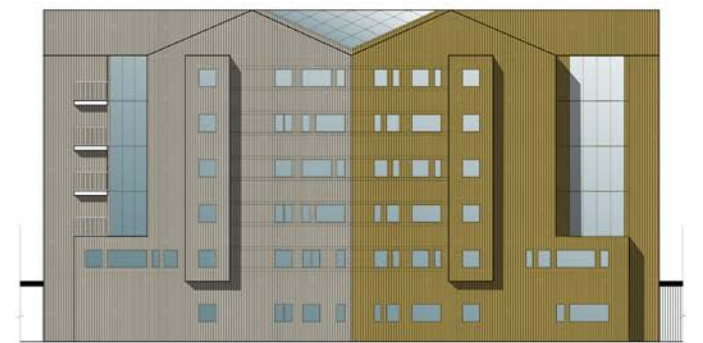
East facade



North facade



West facade



South facade

Fredrik lives in the high rise. He has always been a friendly person and especially now that his old age is coming up on him he does not mind having his friends and assistance close at hand. He rarely goes outside but loves to spend time with his caretakers and friends on the high-rise balconies. On special occasions he brings a friend downstairs to do some weekend shopping and socialize with all the residents at the indoor plaza.



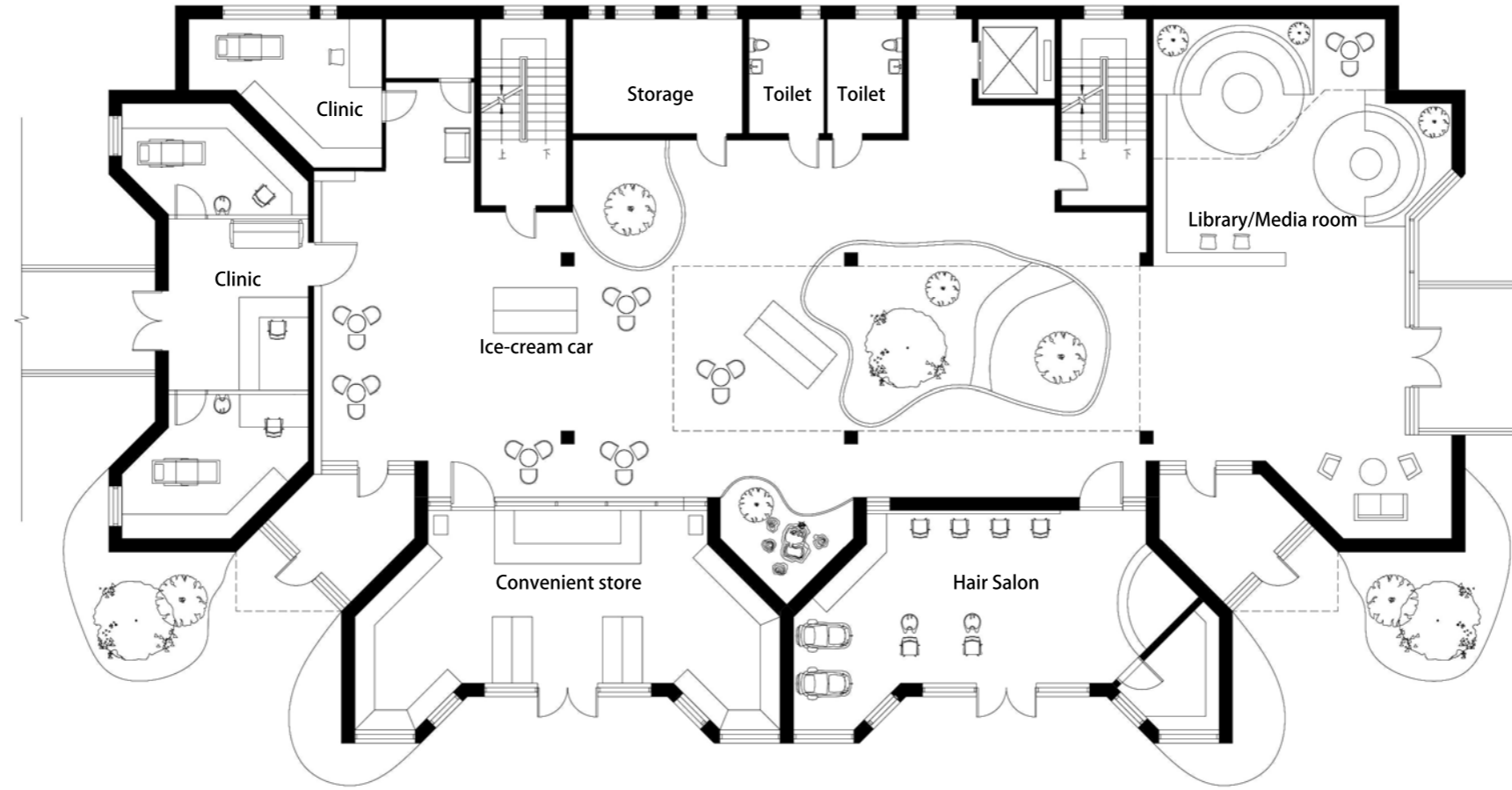
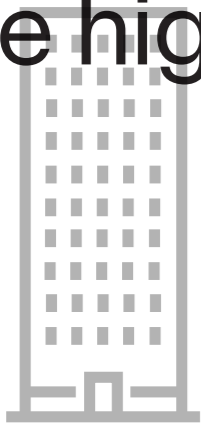
The view from one of the common balconies.



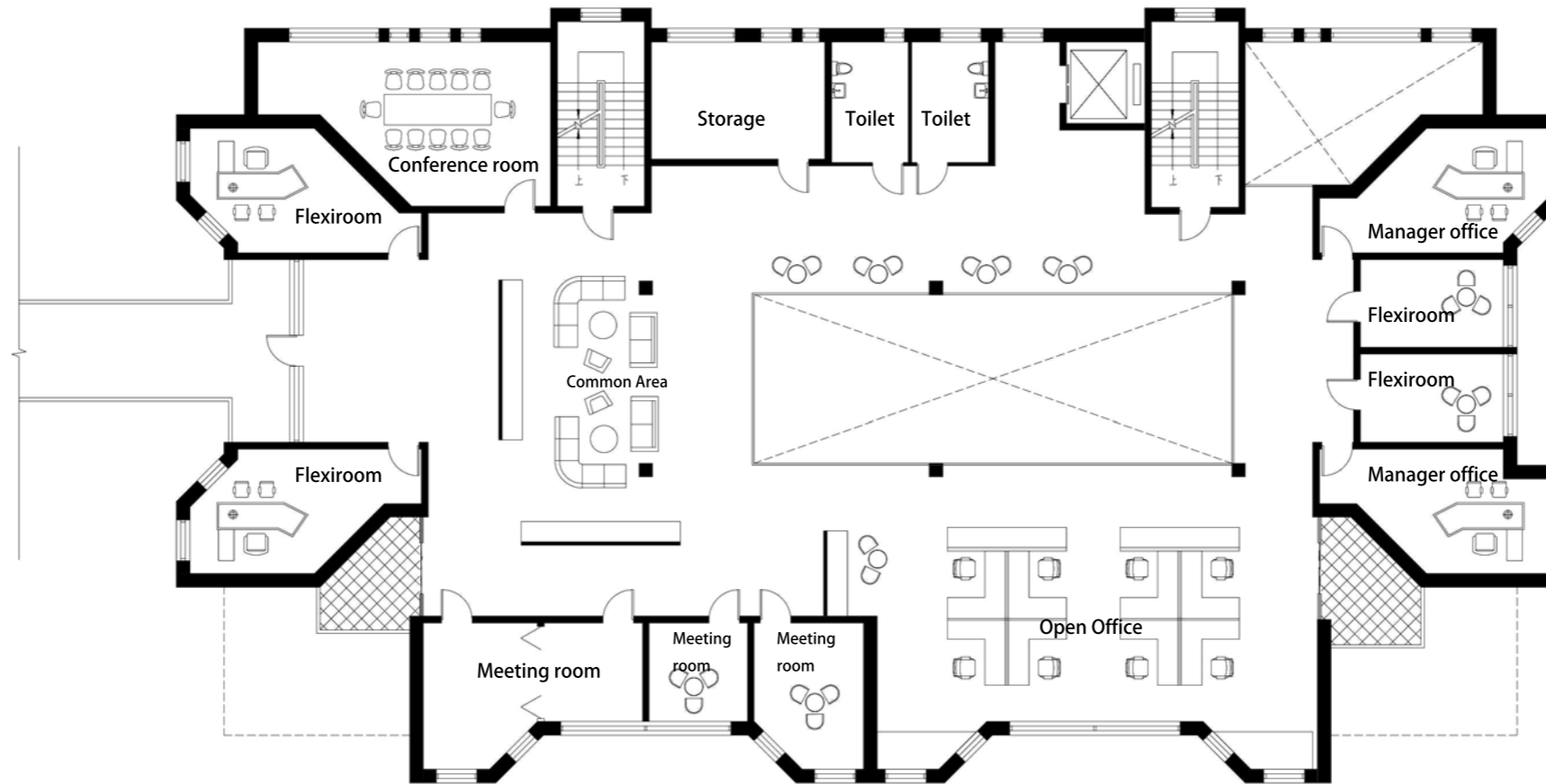
From the indoor plaza showing the library and stores.



# the high rise



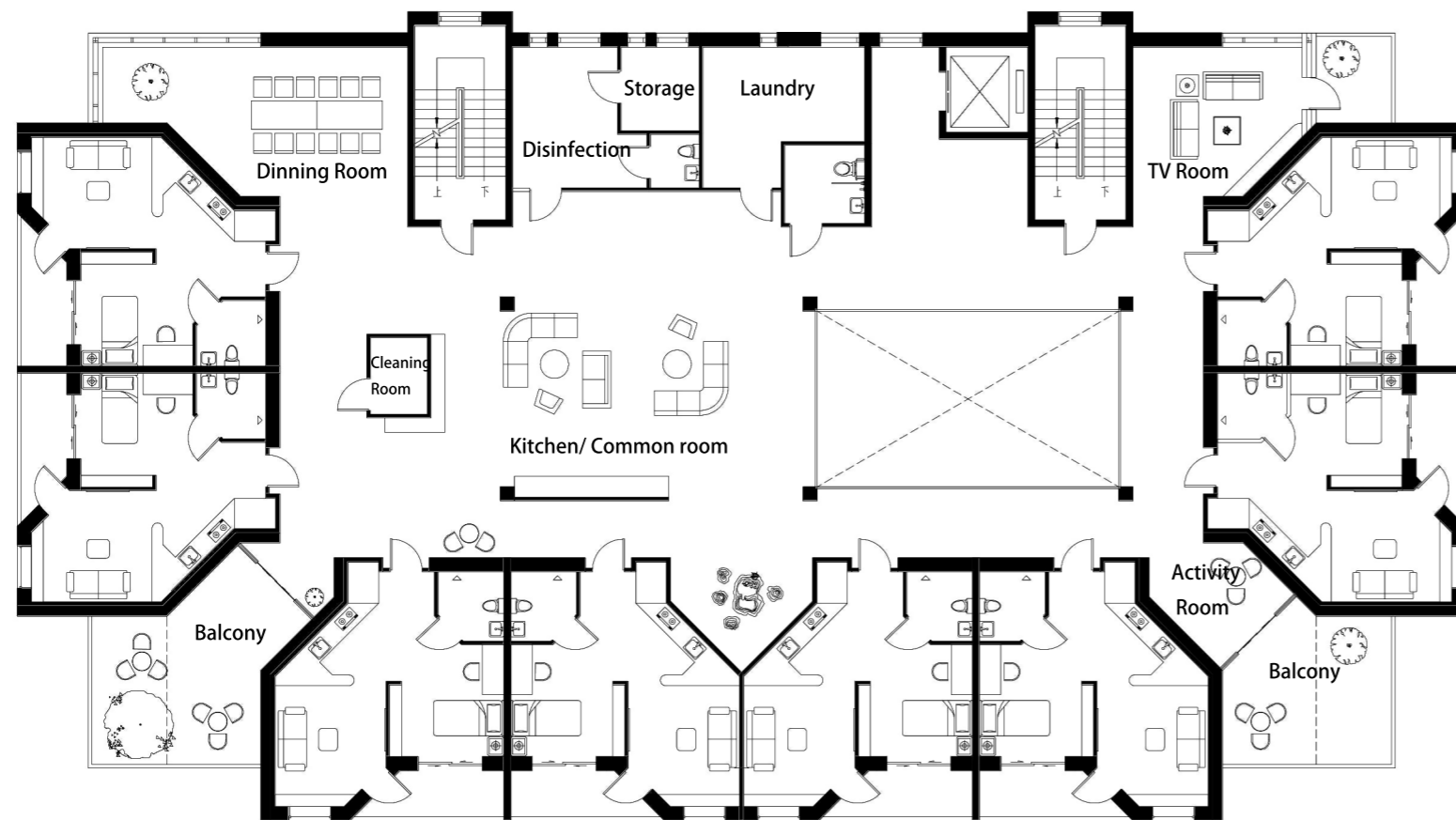
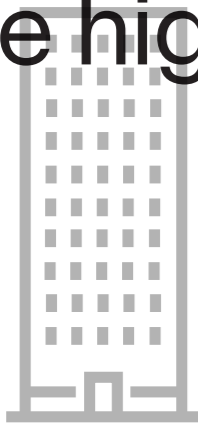
1st floor



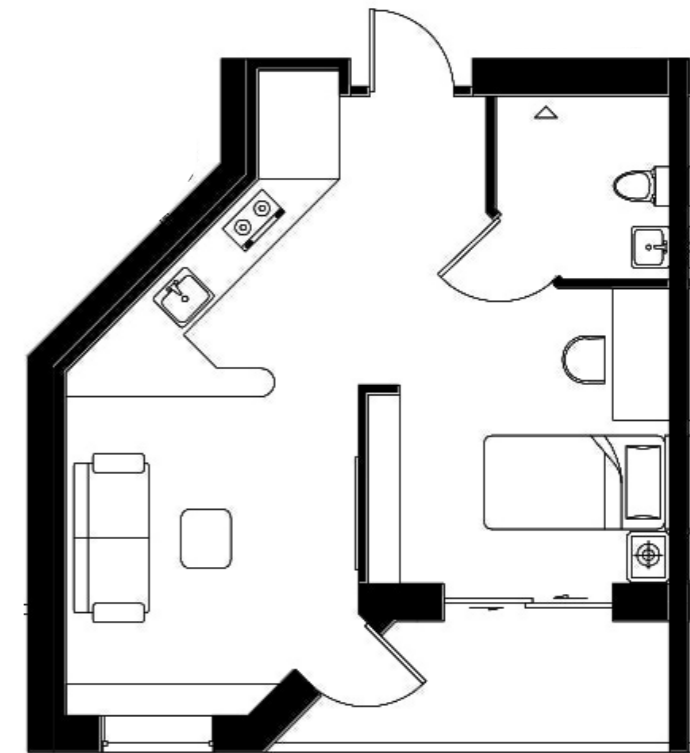
2nd floor

1:200 (A3)

# the high rise

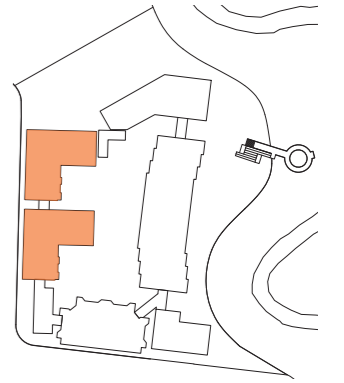
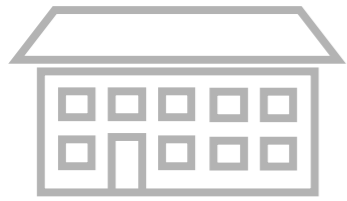


3rd - 6th floor  
1:200 (A3)



Apartment plan

# building block



West facade



North facade



East facade



South facade



1:250 (A3)



Anna loves how the pace of things finally has slowed down. In the building block she finally has time to spend with her friend who lives just on the other side of the corridor, they rarely close the door between their apartments. She uses the exercise grounds every morning and then have her breakfast with the others in the light and spacious common area. After that she retires to her book-circle in the activity room.

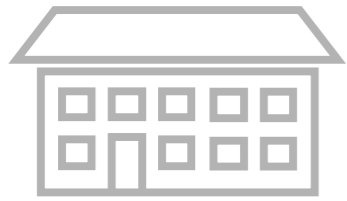


Garden outside the building blocks.



Building block common area.

# building block



1st floor

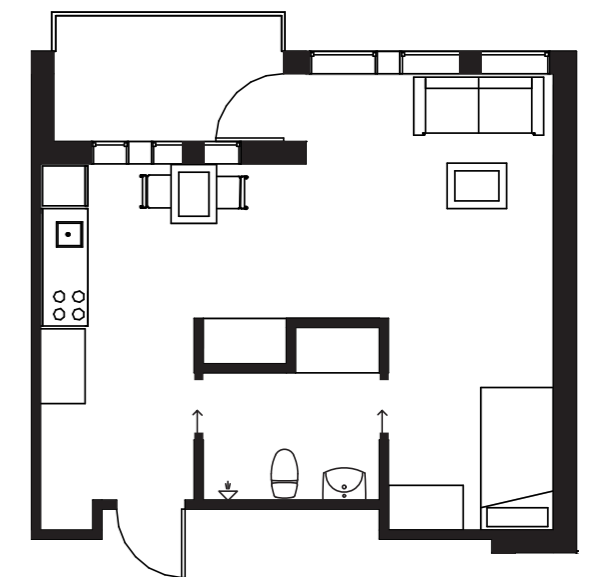


2nd floor

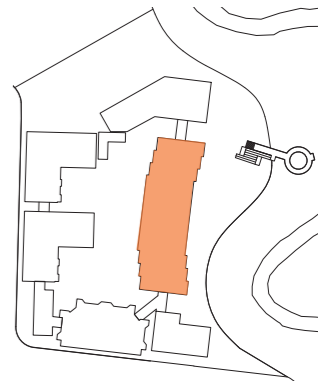


1:200 (A3)

Apartment plan



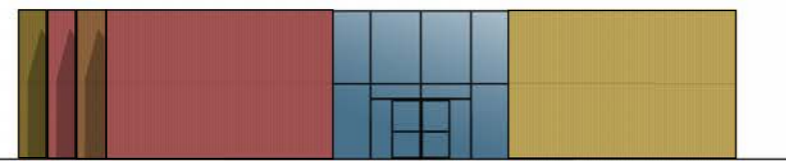
# the town house



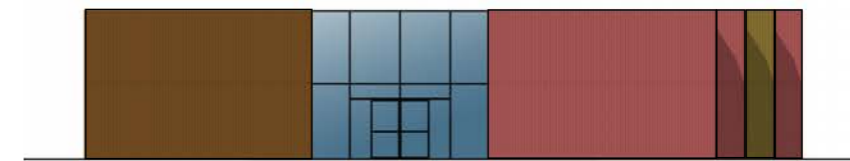
East facade



West facade



South facade



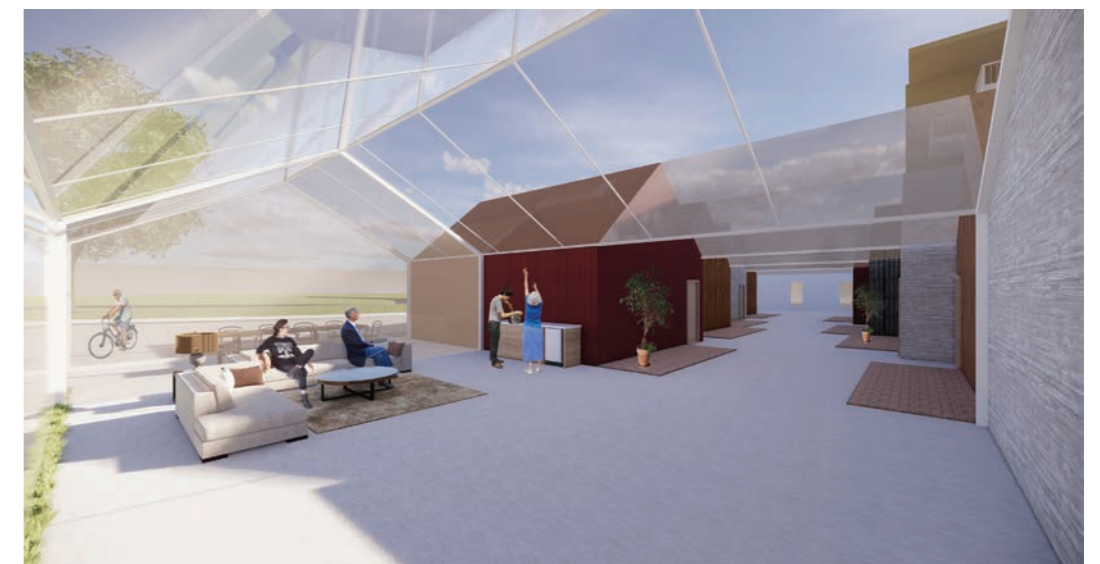
North facade

1:250 (A3)

Eva values her integrity above all things. She has spent most of her life living in a villa in the suburbs and though she has always liked her neighbours she prefers to spend time alone in her garden. The townhouse fits her perfectly, two private patios and the feeling of living in her own house provides her with the privacy she needs while having a social space just down the indoor avenue that passes outside her front door. The neighbours are always just a friendly wave away.

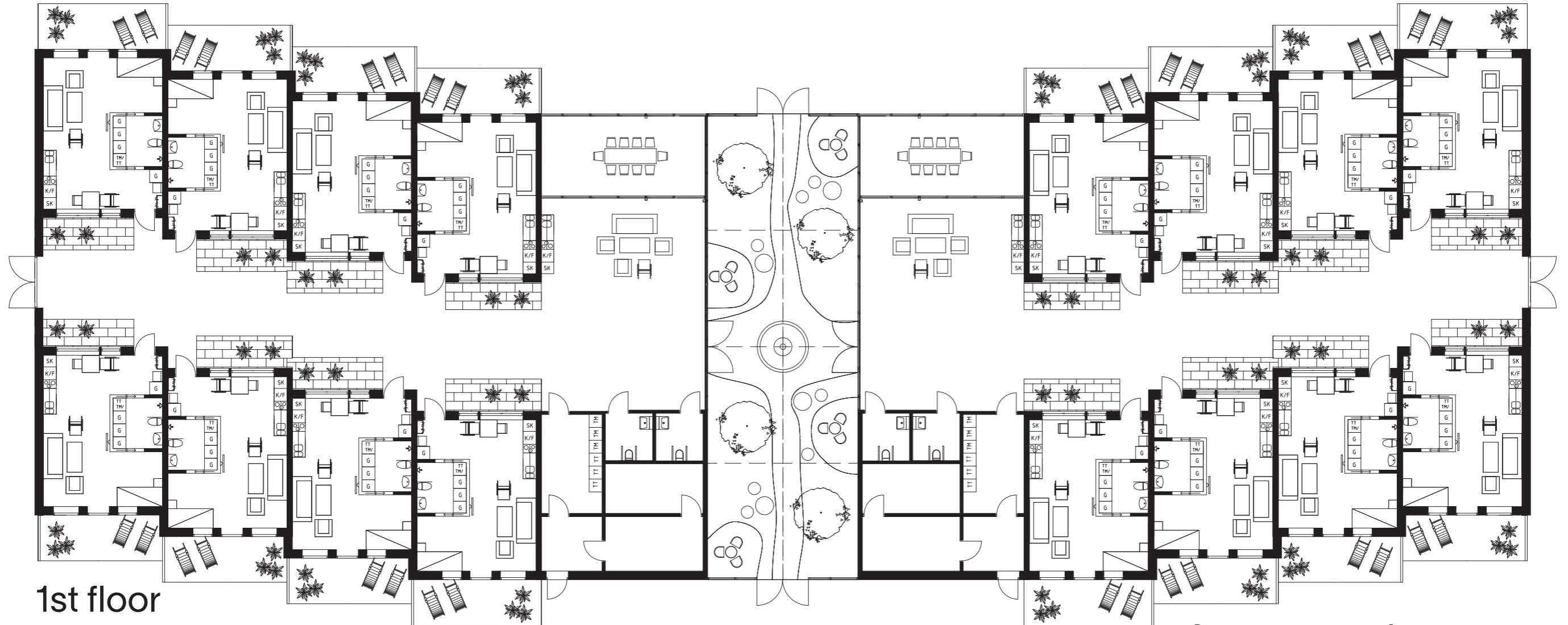


Town house view from east garden.



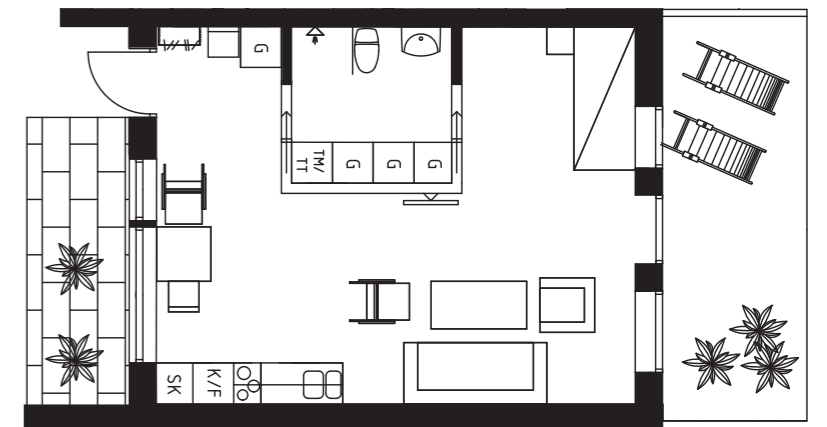
Inside town house common room.

# the town house



1st floor  
1:200 (A3)

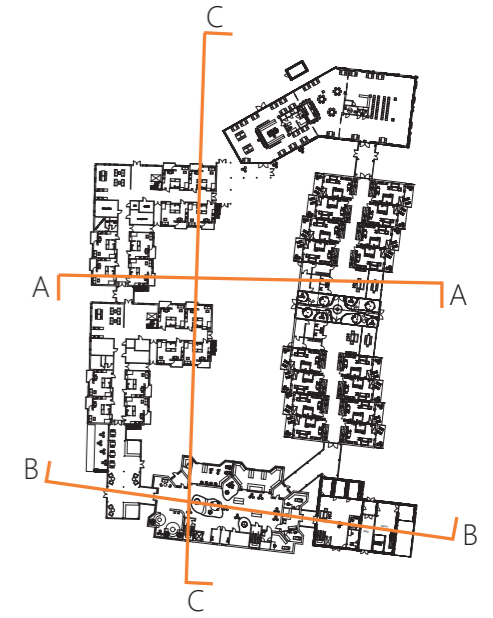
Apartment plan



# sections



A-A section



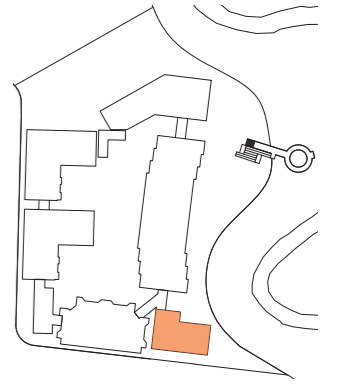
B-B section



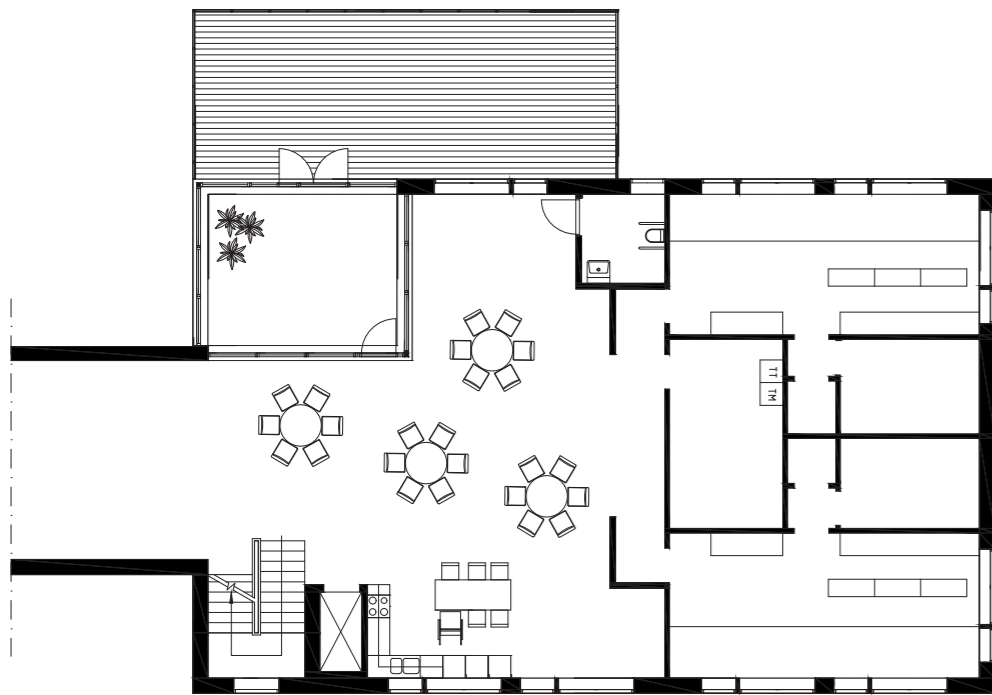
C-C section

1:500 (A3)

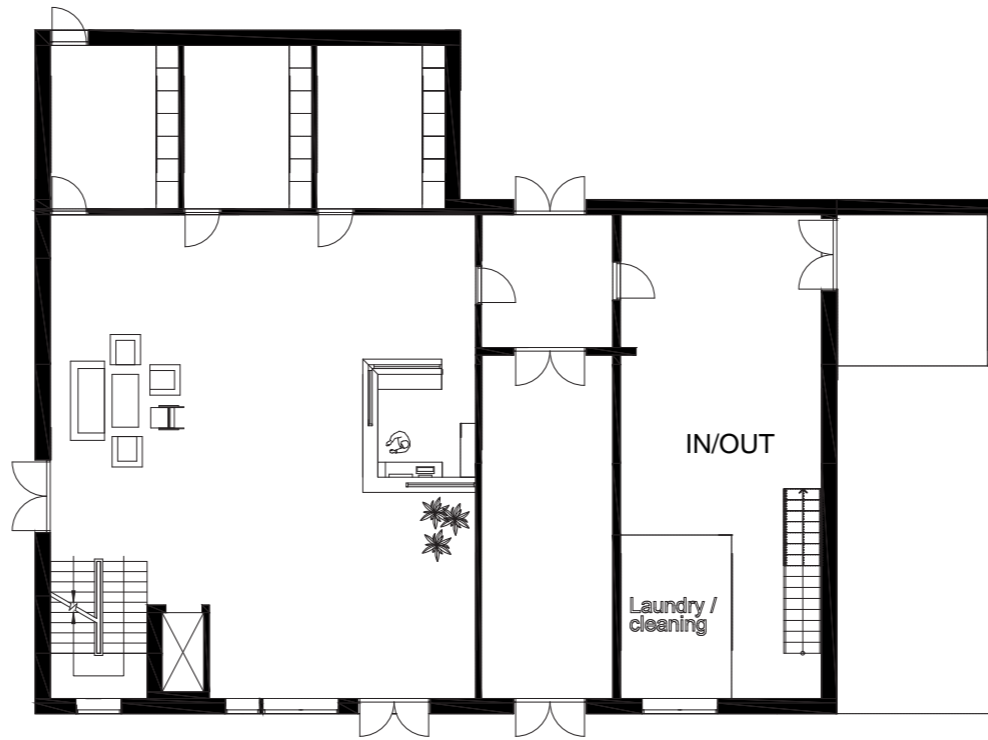
# staff building



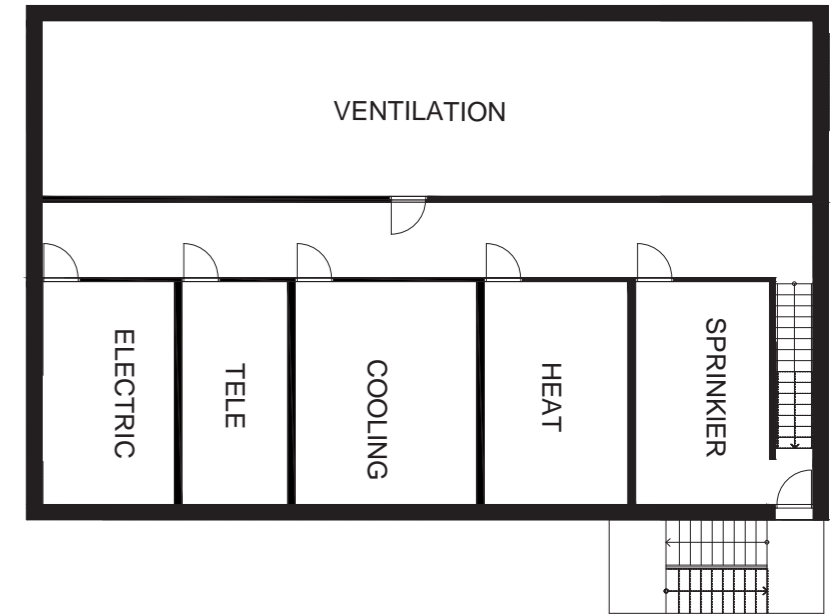
## 2nd floor



## 1st floor



## Basement



1:200 (A3)



# village plaza



myllan

