



A CARING HOME

LAURA COMMERE, TESS EKMAN, SAGA NILSSON

A CARING HOME

THE IDEA BEHIND THE CONCEPT

The concept is to integrate the residents, who are suffering from dementia, into the rest of the area, making them feel AT HOME, as opposed to institutionalised. The architecture accommodates the needs of the dementia patients in empathic ways while still giving the impression that this is a place where people can spend many years of their lives. **WOOD** has been the obvious material of choice because of its sustainable properties, local traditions and atmosphere.

THE BUILDING IN ITS CONTEXT

The building supports the city structure and defines the main street, which helps integrate the building as a natural part of the neighbourhood. The main entrance and public functions are placed towards the square which invites the public into the building. The "8-shape", as well as the scale, creates qualitative spaces inside the blocks. This decision was inspired by both regular city blocks and the "Kringbyggd gård", where buildings were placed around the yard to protect it from wind and ensured privacy. The planning and sizes of the yards are created to get a lot of sunlight while still remaining intimate and welcoming.

The first floor of the block includes both functions of the care home, and a preschool. This adds life to the parts of the building which have a connection to the surrounding, and creates possibilities for **INTERGENERATIONAL** meetings, for example involving both seniors and kids in gardening in the yards. This has been proven beneficial for both parts. The preschool's main playground is placed outside the block, in the park next to nature.

THE LOGIC BEHIND

The block is divided into two by the central core building housing the main entrance, logistics, stairs, elevators and a winter garden. Placing all these functions in a core creates a rational flow of logistics where everything radiates from the central point, and gives both the staff, patients and visitors a good overview of the building volume. An important aspect taken into consideration was also to enable circulation throughout the building and have no dead ends.

The ground floor has the entrance, with a layout that allows the staff to keep record of who enters and leaves the building in a natural and efficient way. This floor also hosts public functions facing the

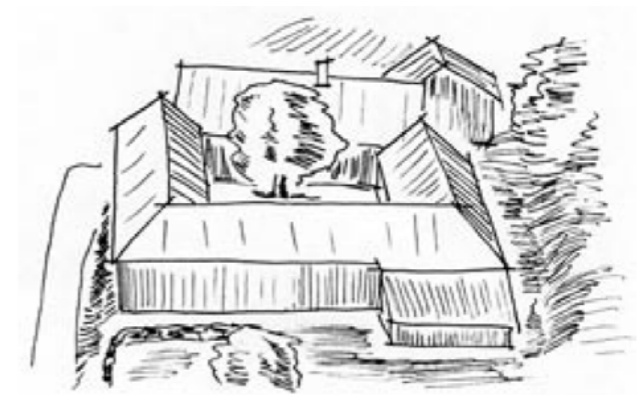
square and main street, as a way to invite into the building. Supportive functions such as the kitchen, laundry etc, are placed towards the parking lot in the south. In the eastern part lies the staff area with views towards the nature outside. The preschool has its own entrance placed in the north. An emphasis has been made on the connection to **NATURE** because of its health benefits. The outdoor environment therefore has four different programs: a cultivation, a sensory, a social and a winter garden.

For sense of security, no residents are placed on the ground floor, instead all units are on level two and three. There are four units per floor, each unit including ten apartments. Between each unit, there is a small shift in the building volume, which creates a visual boundary between the units without the use of closed doors or walls. Within the units, there is a clear emphasis on the corners, where the common room is placed. This emphasis is created by having sightlines through the corridors all the way into the common room, and out which favour orientation, but also results in the common room having views in two directions, making it a more qualitative space.

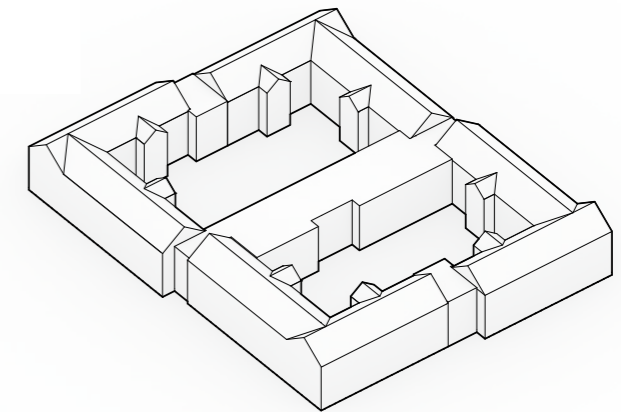
In this project, double sided corridors have been avoided, as it creates spaces which are hard to orient and have a strong institutional feeling to them. Instead the corridors are placed along the facades facing the yards, making them light and easily orientable. An added feature of the corridor are the **NICHES**, which breaks the monotone halls and creates small spaces which makes resting possible, as well as creates an "in-unit" alternative to the private apartment and the public common room.

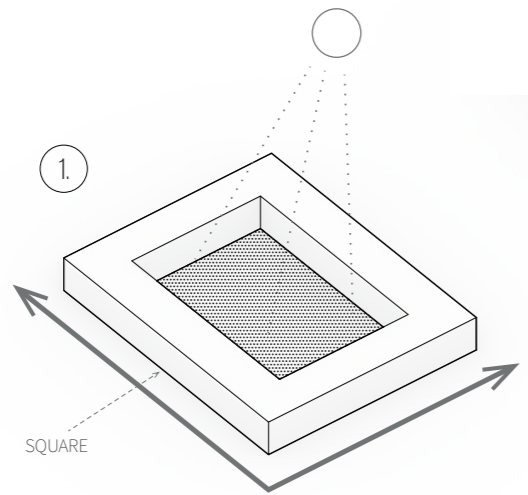
THE APARTMENT

To make the residents feel part of the "real world", a connection towards the outside is made in both the common rooms and in all apartments. Every apartment has a french balcony, as well as a big window with an integrated niche for sitting, storage and to put decorations on. The apartments being placed exclusively on floor two and three also means that the residents can feel safe while sleeping with an open window. Niches and windows in front of the apartments make it possible to personalize the space and help the residents to recognize their home. The layout of the apartment is kept general to make it possible to furnish in multiple ways, according to the residents preference.

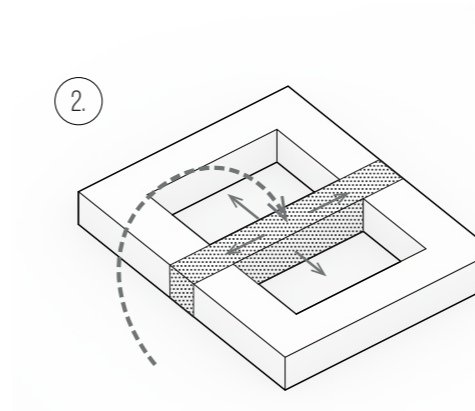


A "Kringbyggd gård" - built around yard. The upper picture taken from Kungsbacka Architectural program, which inspired us in the choice of concept. The lower picture is the new project.

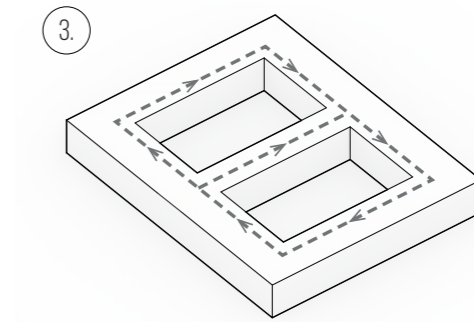




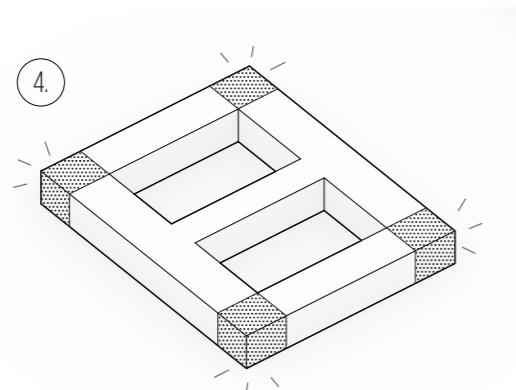
Supporting city structure, defining street and creates private yard



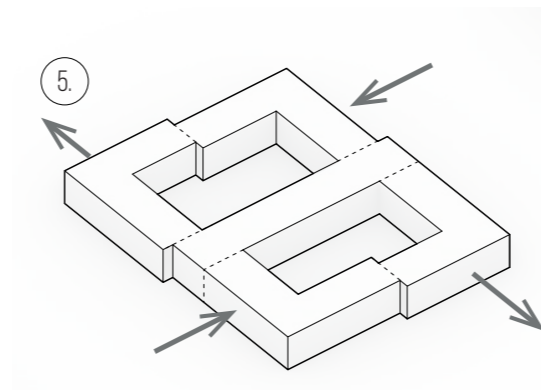
Functional core create rational flows. Yard is divided by two intimate spaces



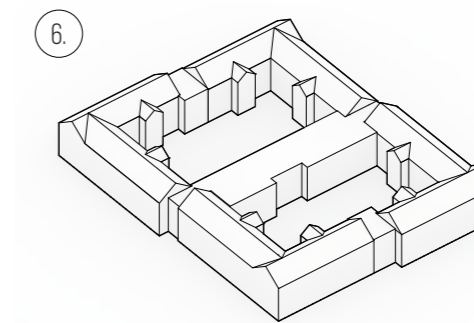
Enables circular movement with no dead ends or double sided corridors



Common rooms is put in corners with light and views in two directions



A small shift between units creates a visual division without adding barriers

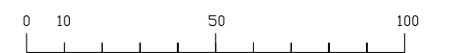


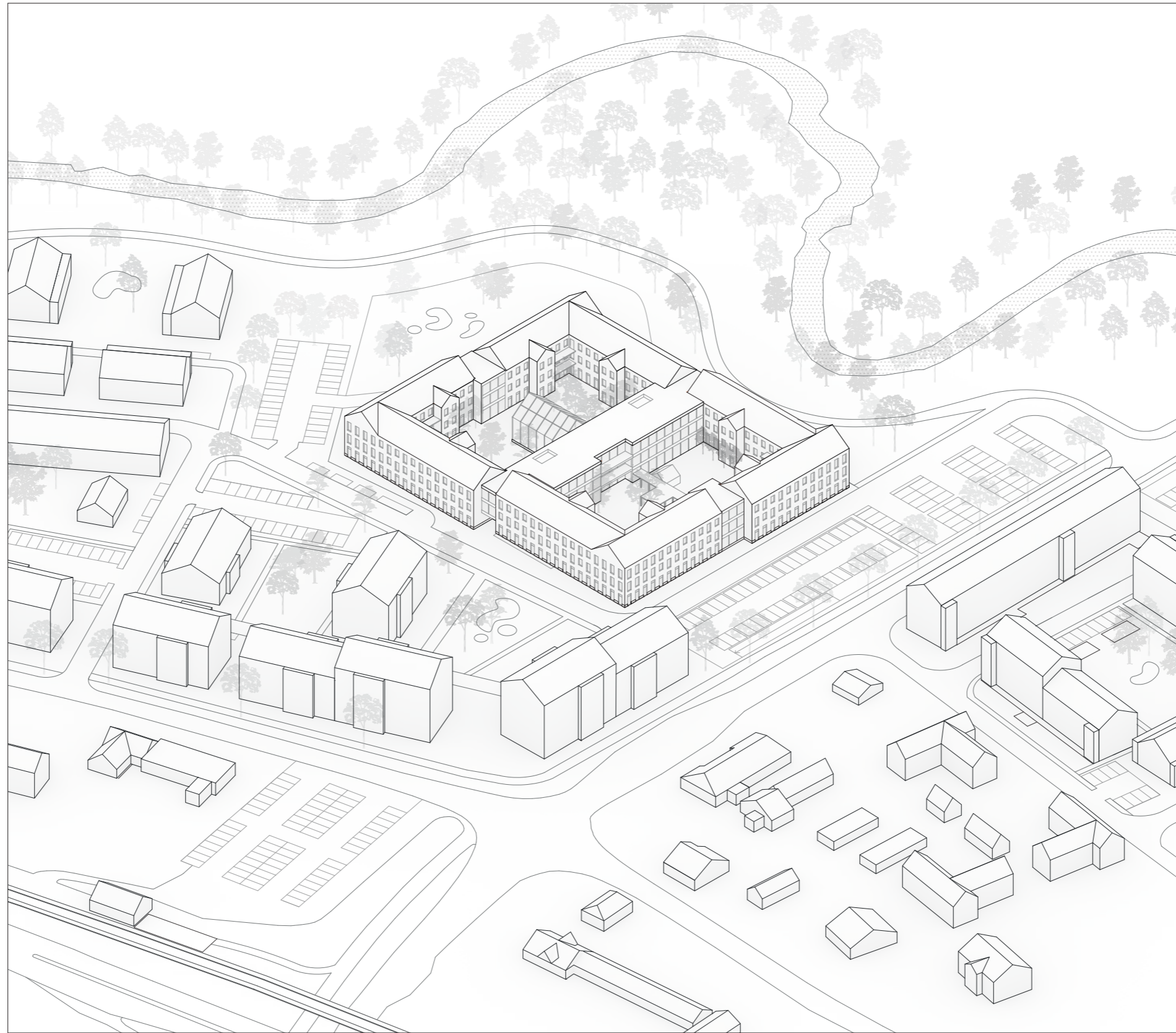
Gable roof, greenhouse and niches in corridor adds value and breaks scale

VOLUME DIAGRAMMS



SITE PLAN 1:2000





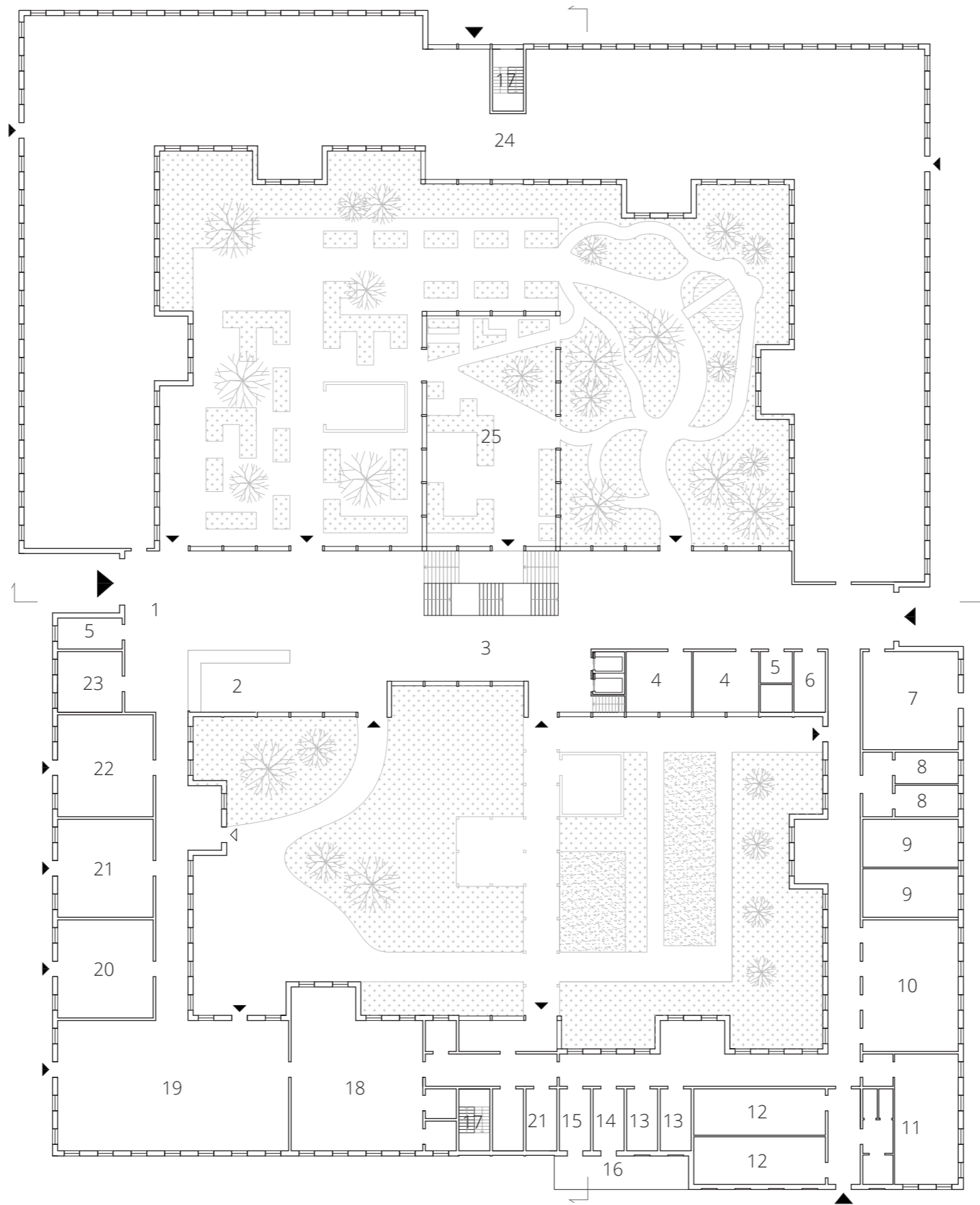
AXONOMETRIC OVERVIEW

The building in its context - the shape of the building helps define the surrounding streets, creating rooms in the urban context.



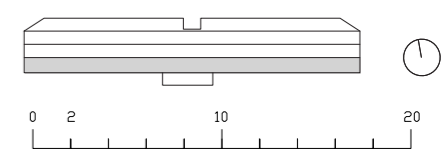
ENTRANCE

The main entrance is facing the square and is emphasised by an indent in the facade. The wooden panelling in two sizes is meant to create a human scale on the bottom floor.



- 1. Entry hall/Lobby
- 2. Reception space
- 3. Vertical communication
- 4. Gym/Spa
- 5. Storage
- 6. Drug room
- 7. Staff room
- 8. Managers office
- 9. Meeting rooms
- 10. Open office space
- 11. Conference
- 12. Locker room
- 13. Sanitary
- 14. Deliveries
- 15. Waste
- 16. Loading dock
- 17. Fire exit
- 18. Kitchen
- 19. Resturant
- 20. Public Store
- 21. Public Library
- 22. Public Hairdersser
- 23. Flexiroom
- 24. Preschool
- 25. Winter garden

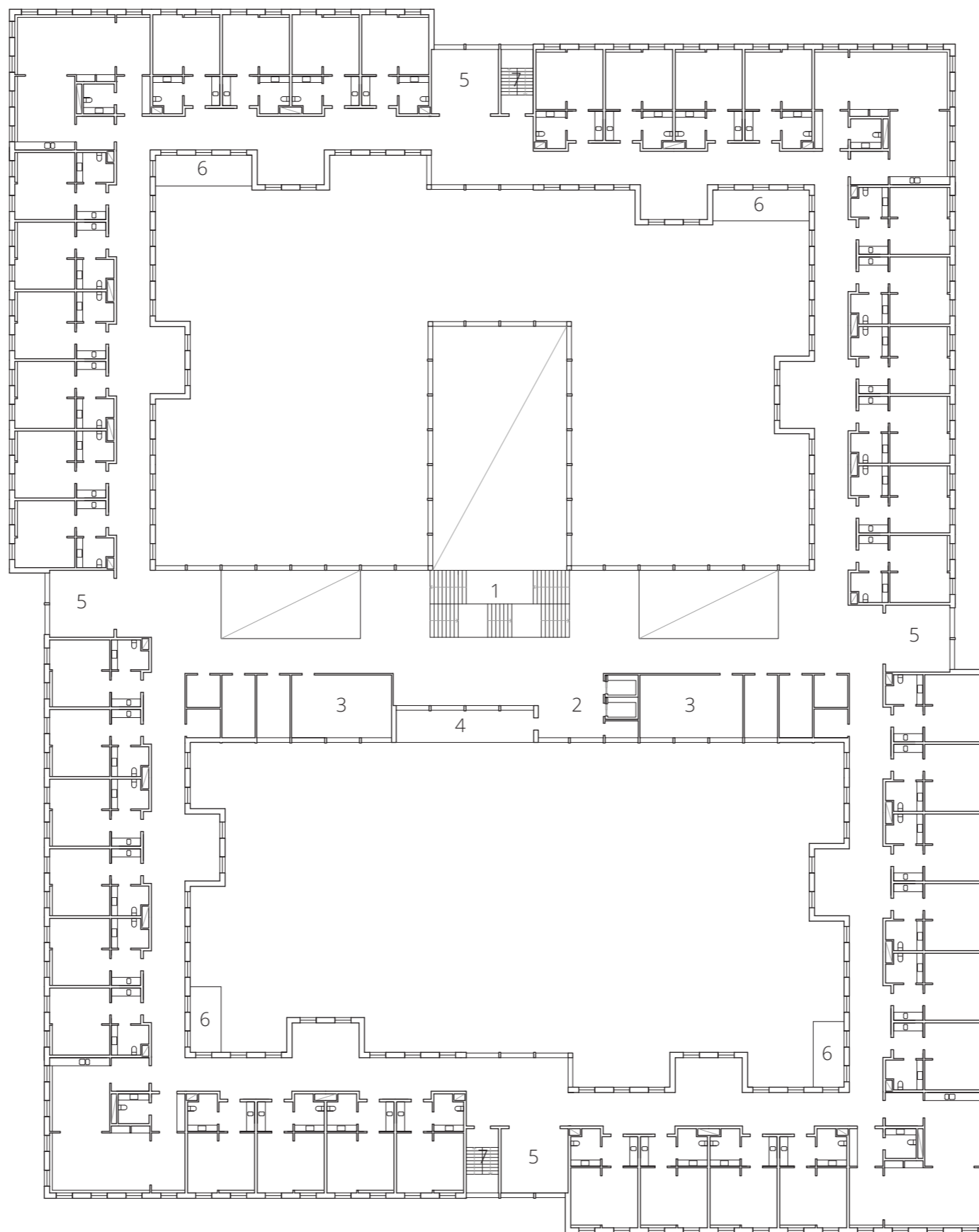
ENTRANCE FLOOR 1:400





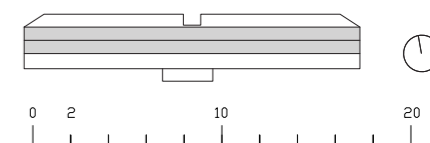
ENTRANCE HALL

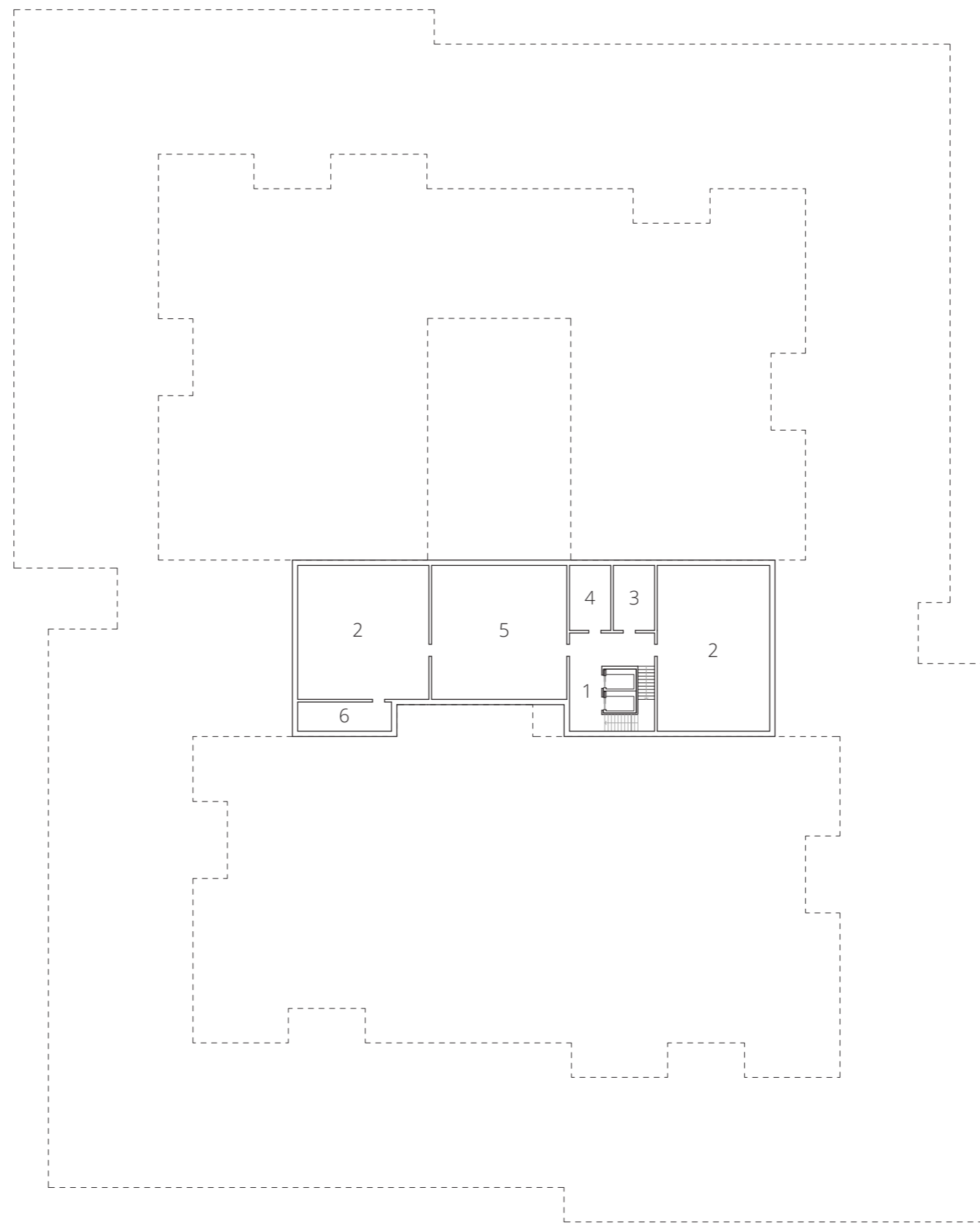
When entering the entrance hall, you immediately get an overview of the building. The reception to your right is impossible to miss.



- 1. Main stairs
- 2. Elevators
- 3. Staff areas
- 4. Terrace
- 5. Small common rooms
- 6. Balconies
- 7. Fire exit

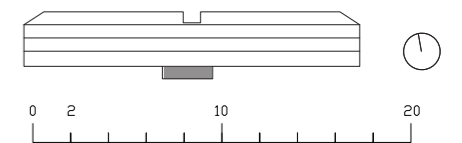
SECOND AND THIRD FLOOR 1:400

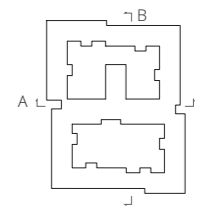
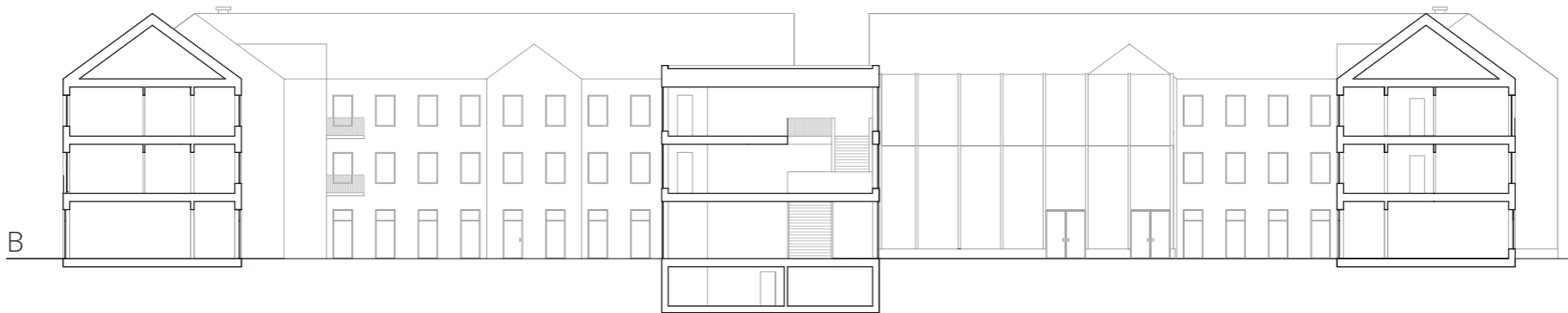
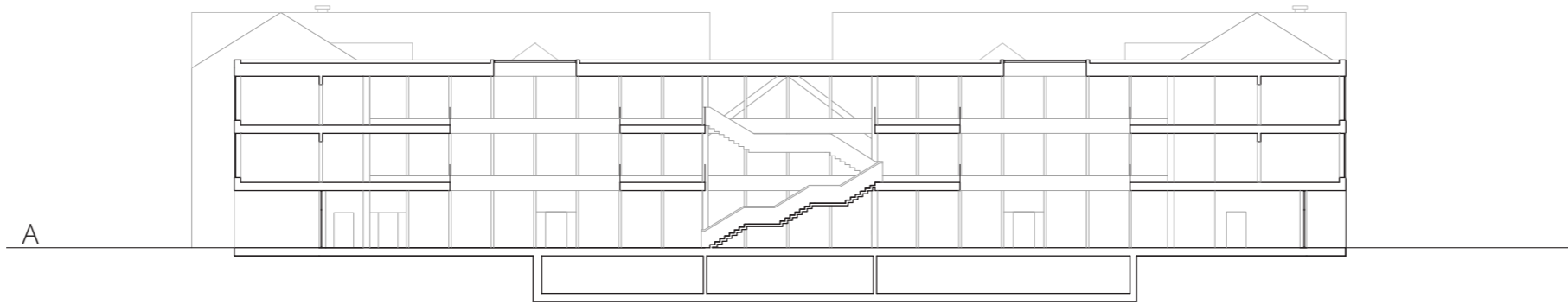




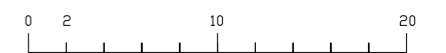
- 1. Vertical communication
- 2. Ventilation
- 3. Sprinkler room
- 4. Heating
- 5. Residents' storage
- 6. Electricity

BASEMENT 1:400





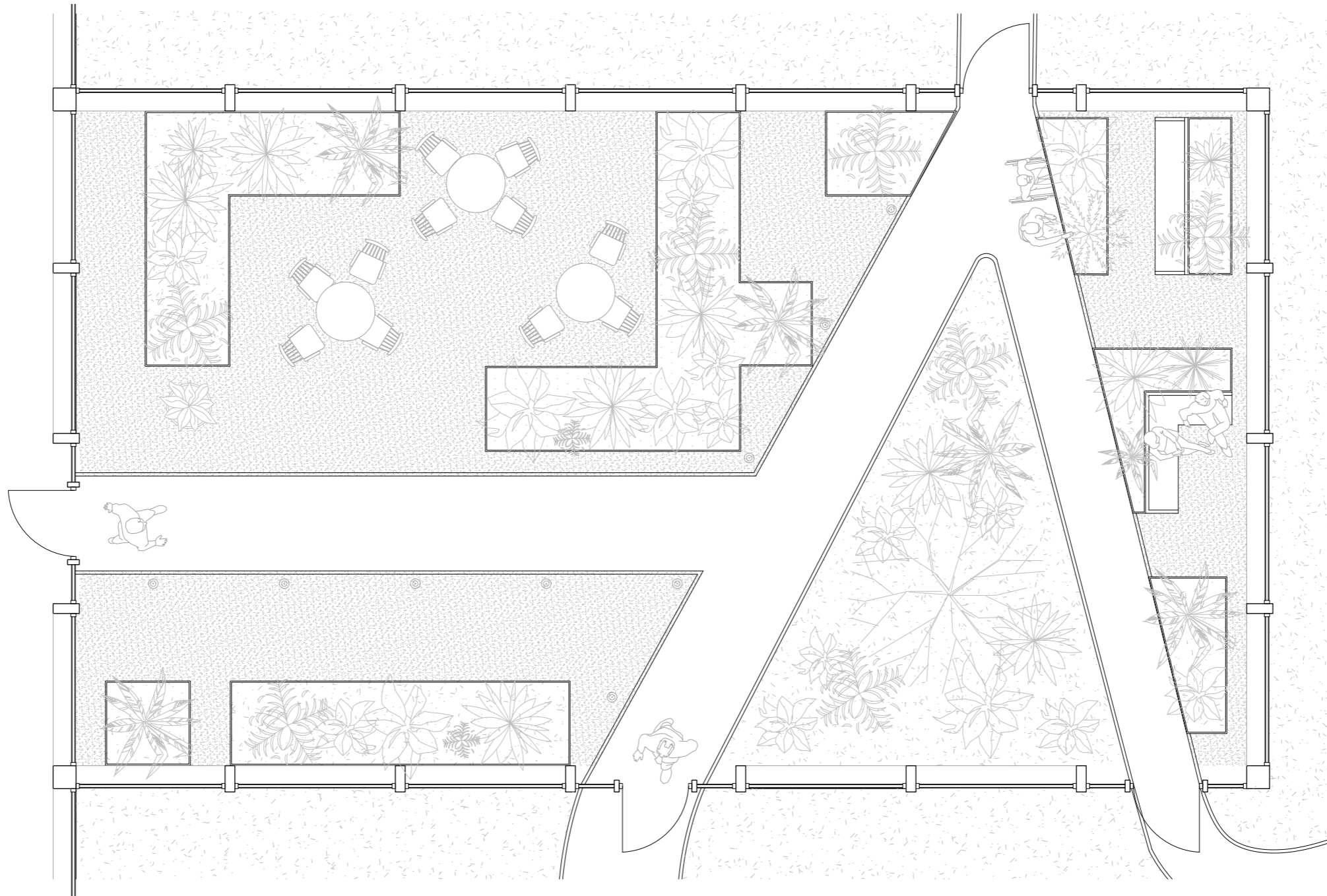
SECTIONS 1:400





YARD

In the northern yard there is both the cultivation area, where children from the kindergarden and the elderly residents can meet and learn about gardening together, as well as the sensory garden where there is something to stimulate every sense.



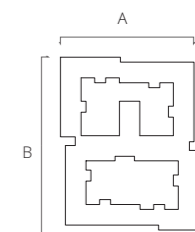
WINTERGARDEN 1:100



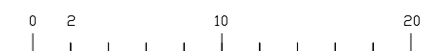


WINTERGARDEN

Social activities can go on all year round in the winter garden. Some of the flowerbeds are made so that you can roll under them with a wheelchair, making them accessible to everyone.

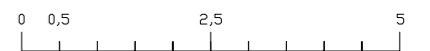


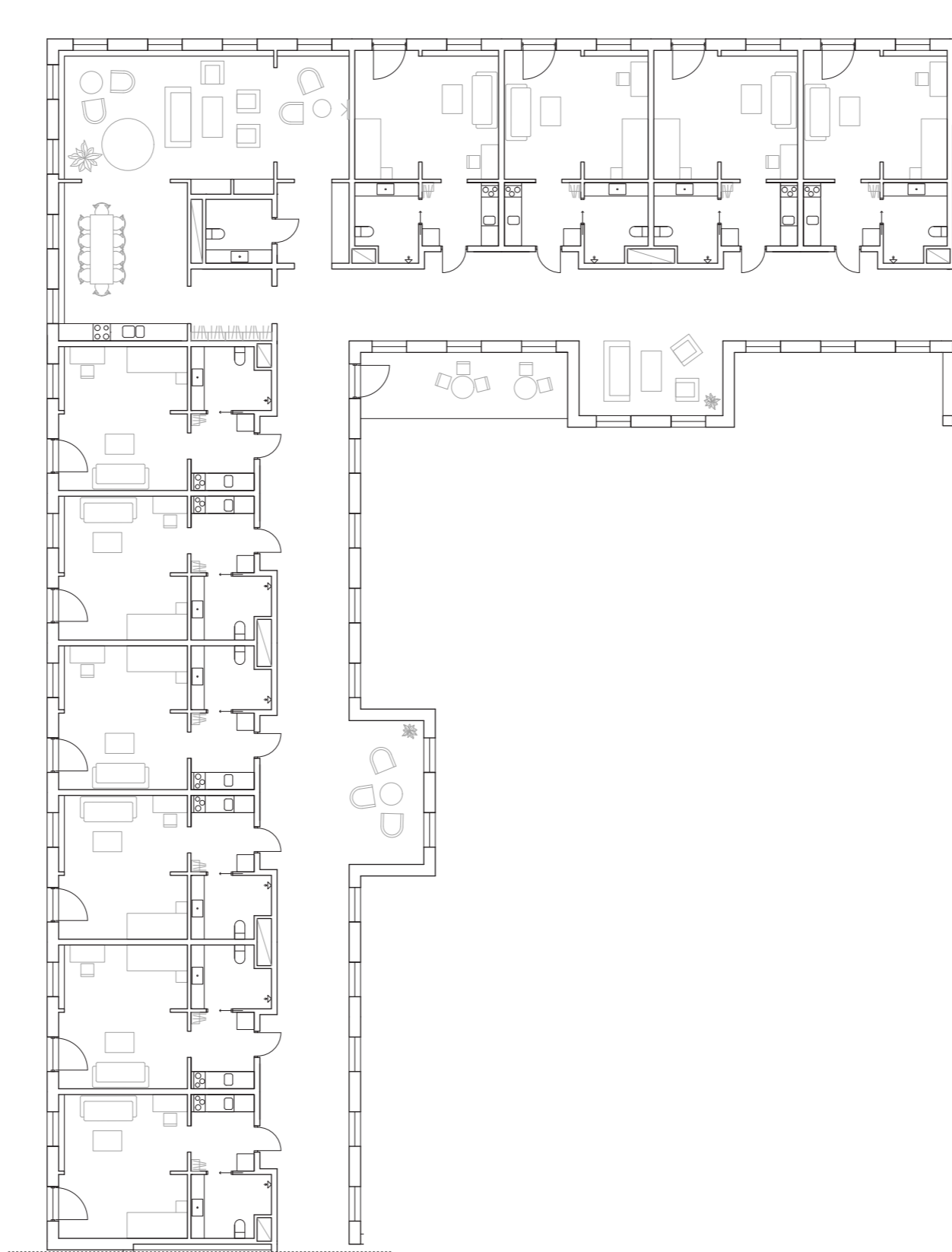
FACADES 1:400



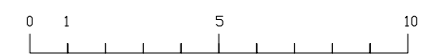
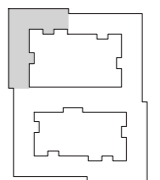


FACADE DETAIL 1:100





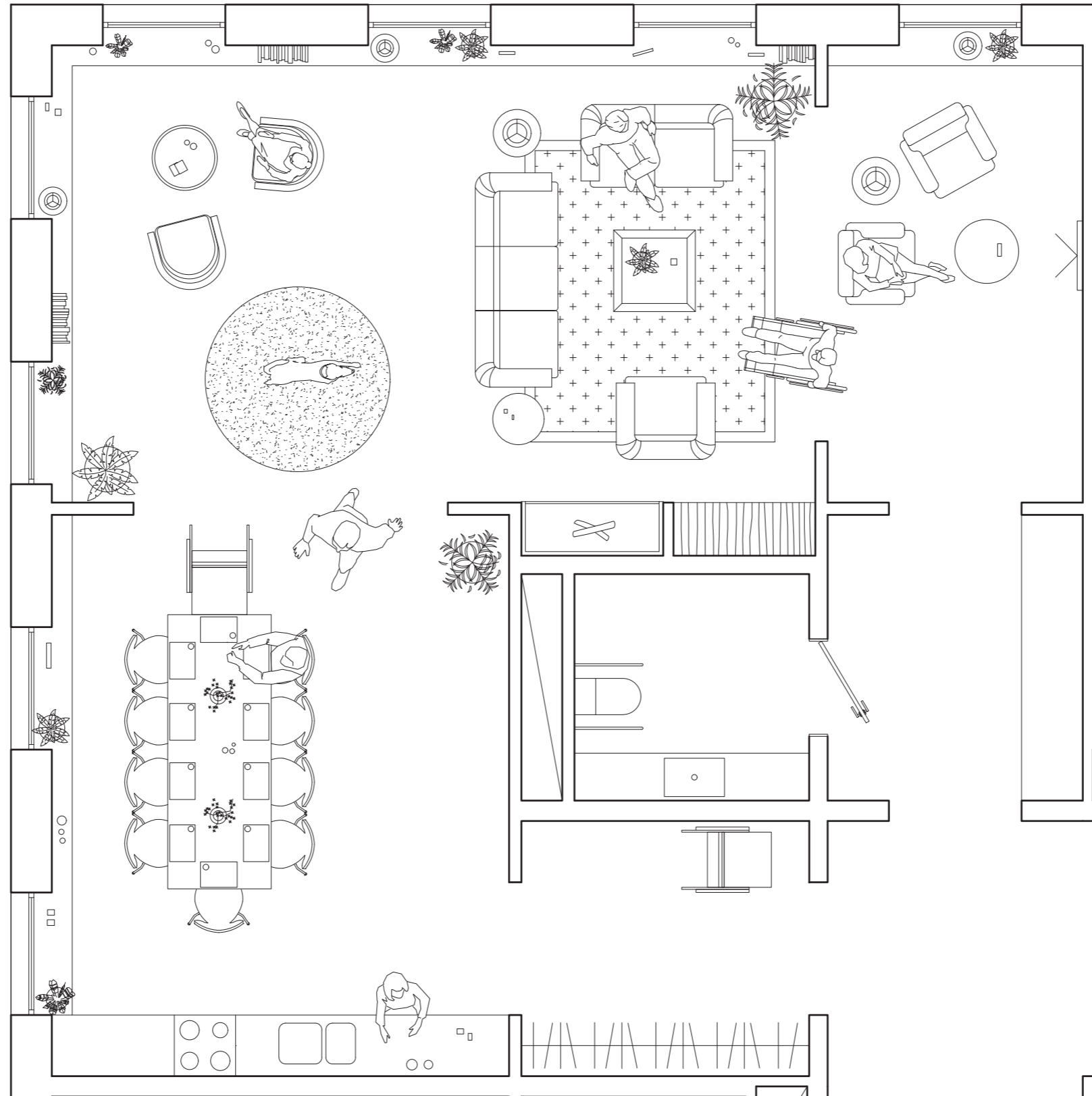
UNIT PLAN 1:200



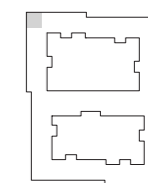


CORRIDORS

The sightlines to the outside help the residents with orientation, and the niches in both the facade and in front of the apartment help creating a dynamic space, instead of an institutional corridor. The corridor niches are also an excellent spot for a more private encounter.



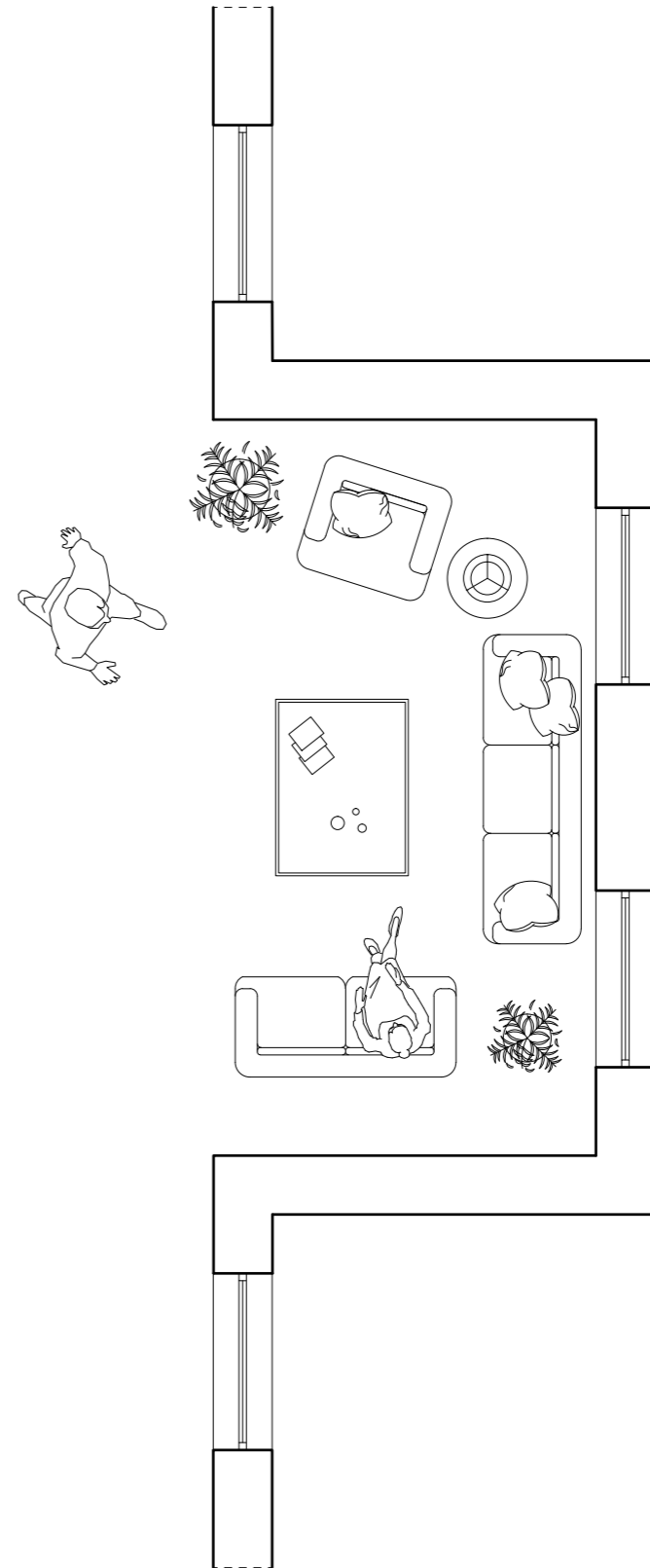
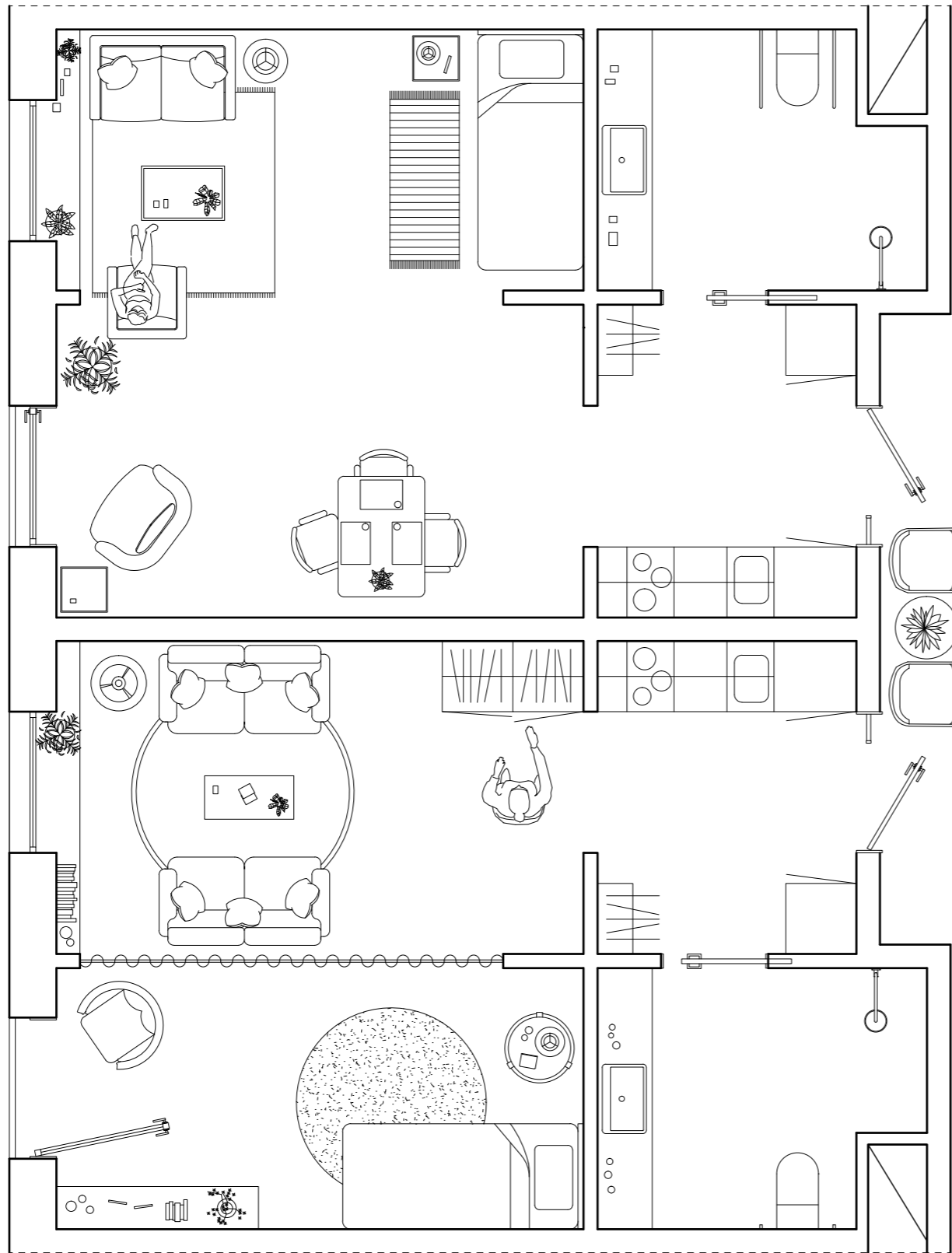
COMMON ROOM 1:50





COMMON ROOM

The common room has views towards two directions with benches all around the walls for sitting or decorations. The division of the space is similar to that of a regular apartment with a smaller more private space, a more public living room, and a common kitchen/dining hall.



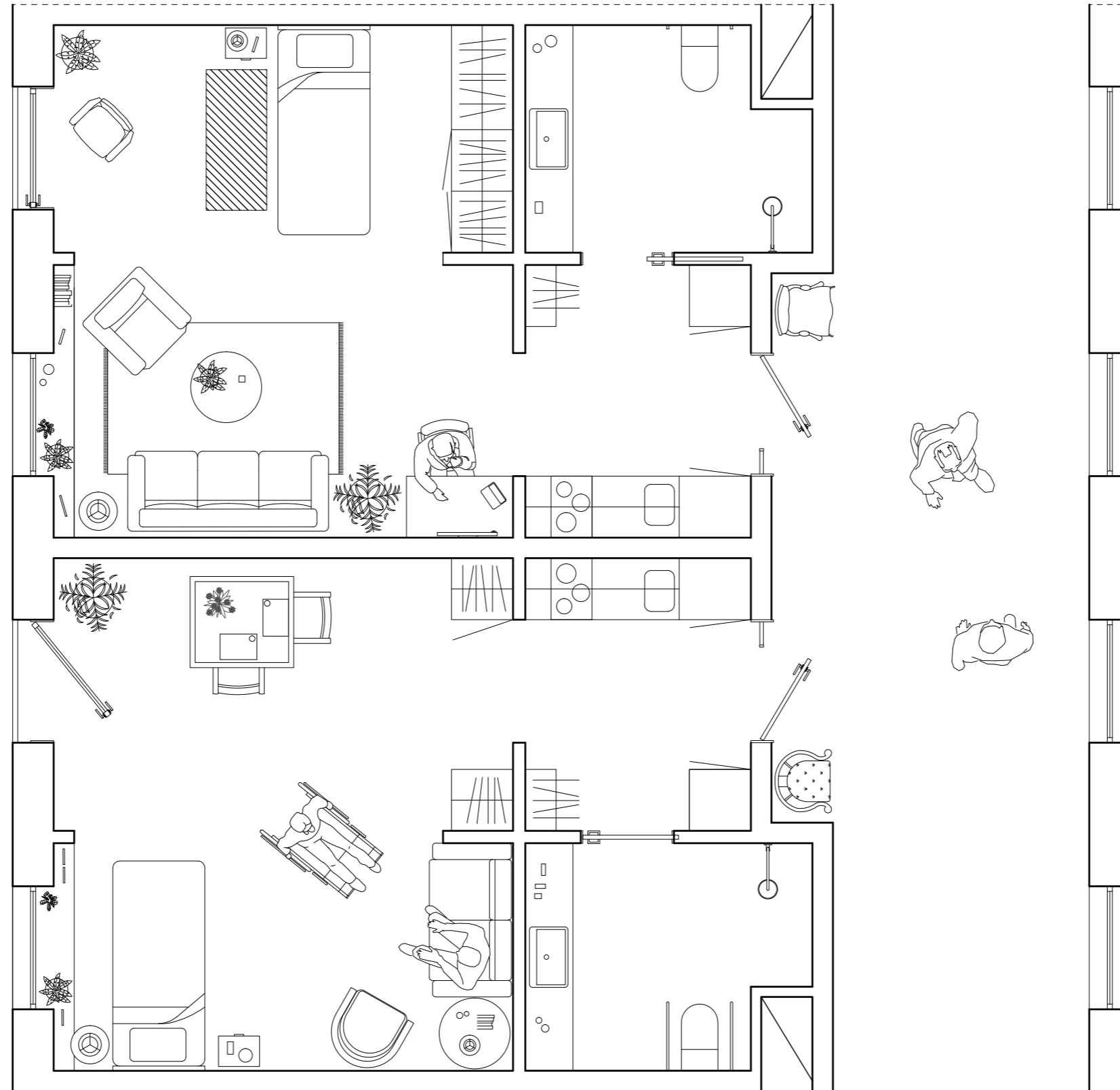
APARTMENT PLANS 1:50





NICHES

The niche outside the apartment is meant to be personalized, to make finding your own door easier. A window for display, a shelf and some hooks are provided to make that personalization as easy as possible.



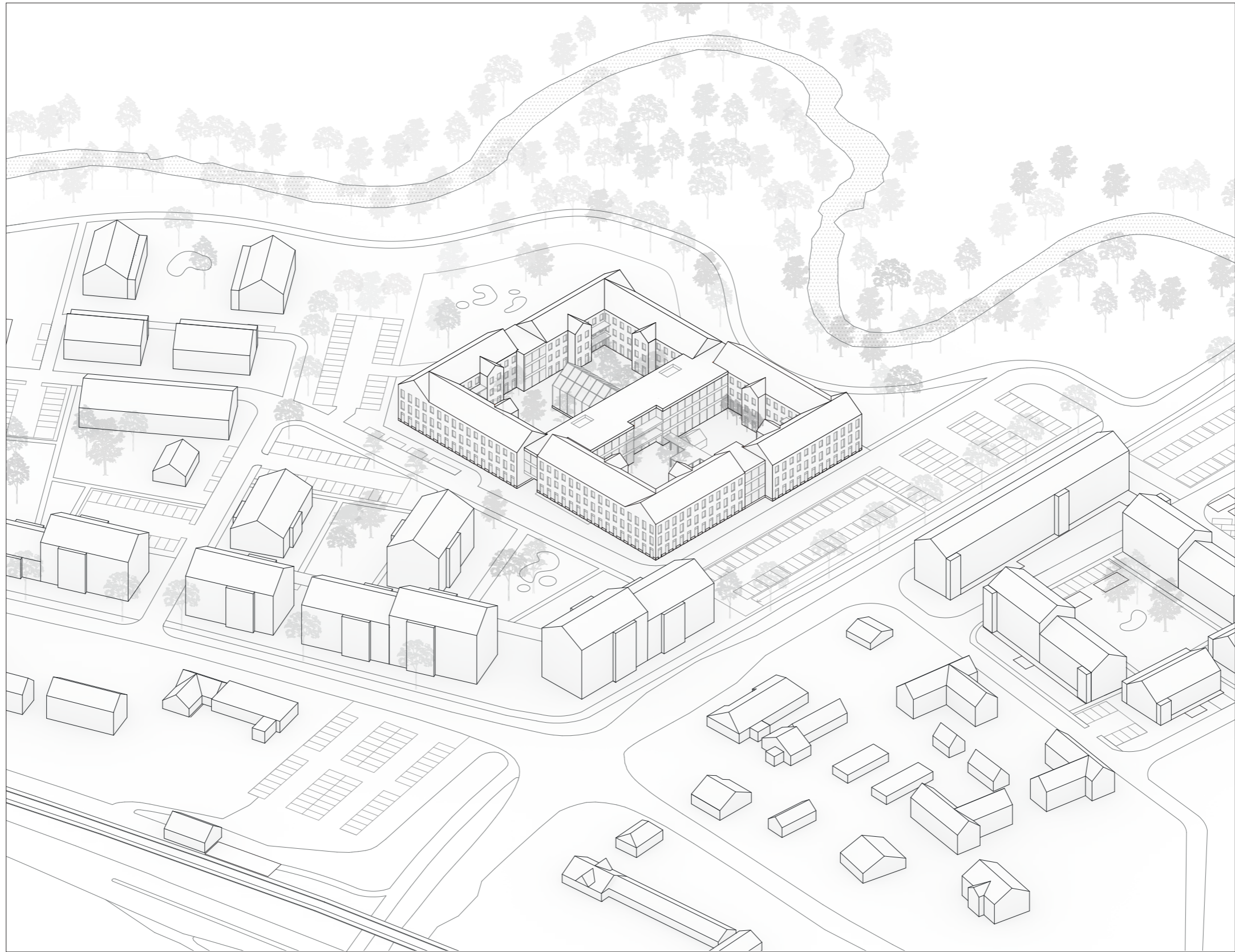
APARTMENT PLANS 1:50





APARTMENT

In the apartment a focus has been put on generality, allowing the resident to furnish as they wish. The permanent features are the window niche which doubles as both display and seating. The french balcony makes the outside more accessible.



THANK YOU!