

Mengyao Zhang

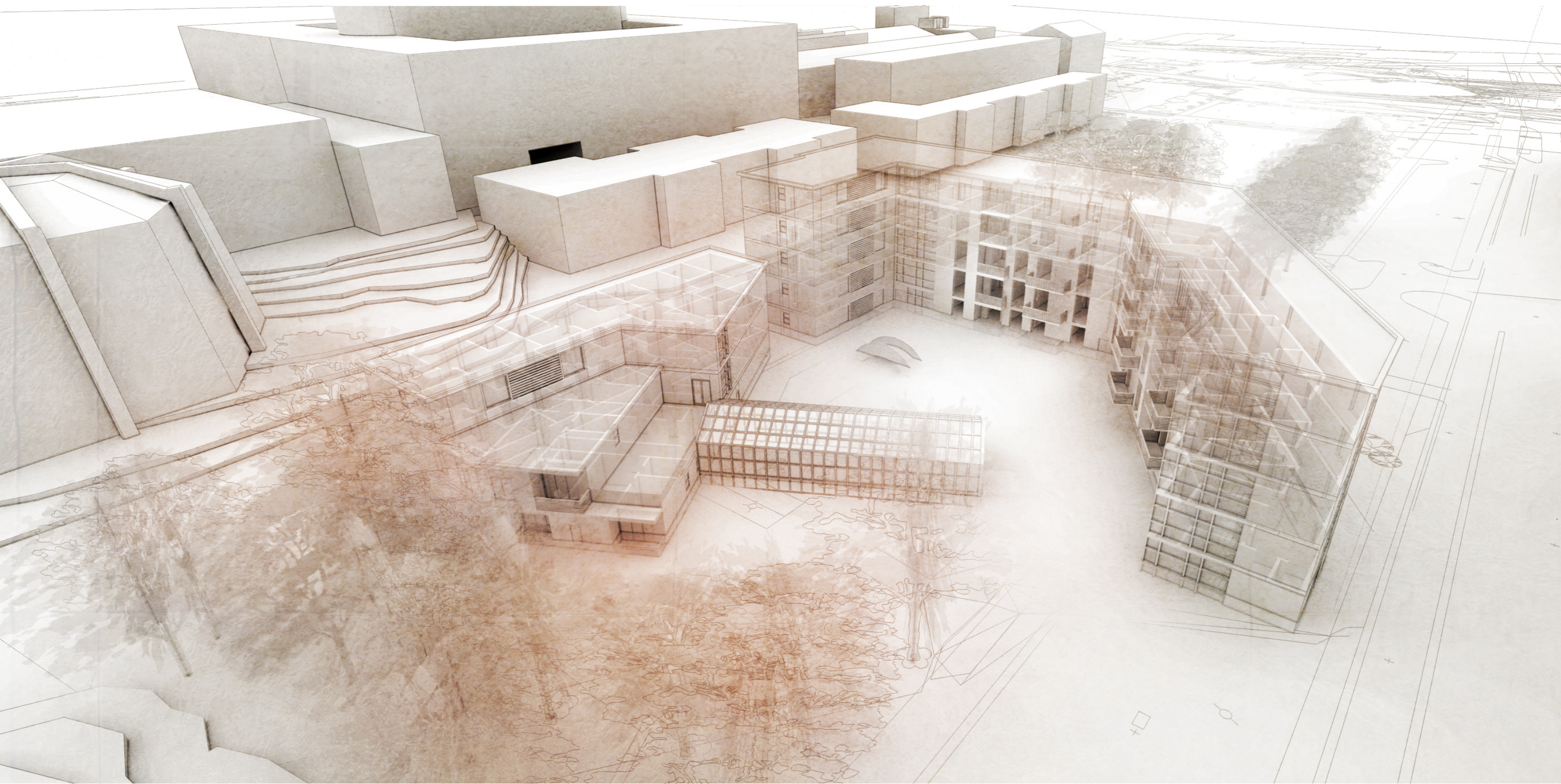
Senior Housing Studio 2015 Autumn

# Contents

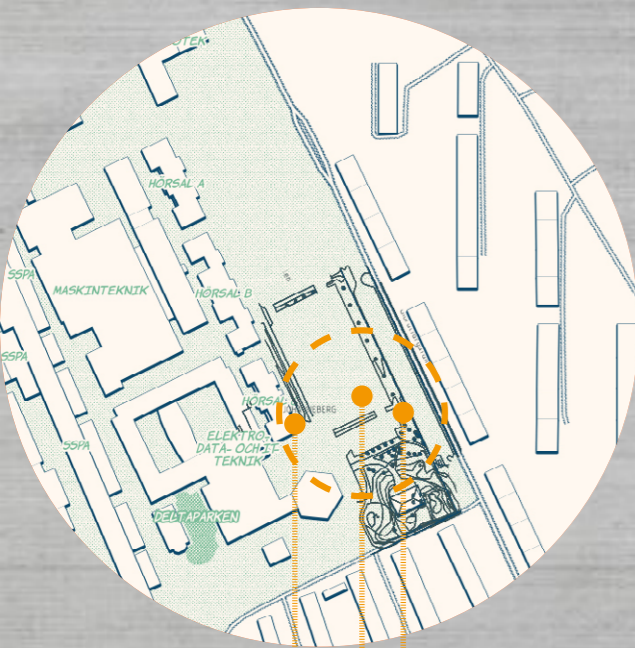
---

SENIOR HOUSING    AUT163

Aerial View	01
Site Analysis	02
Site Plan	04
Floor Plan	05
Layout	08
Facade and Section	09
Perspective	10



# Site Analysis



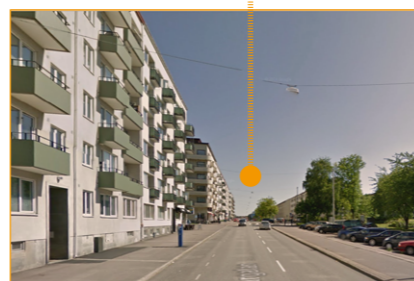
Site Demarcation



Surroundings

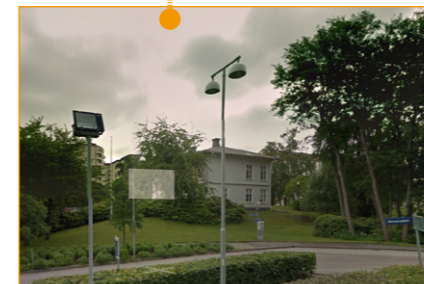


Roads



On the left of the site, it's the teaching building of Chalmers University of Technology.

On the right of the site, it's Gibraltargatan. Parking space and some residential buildings are next to the site.

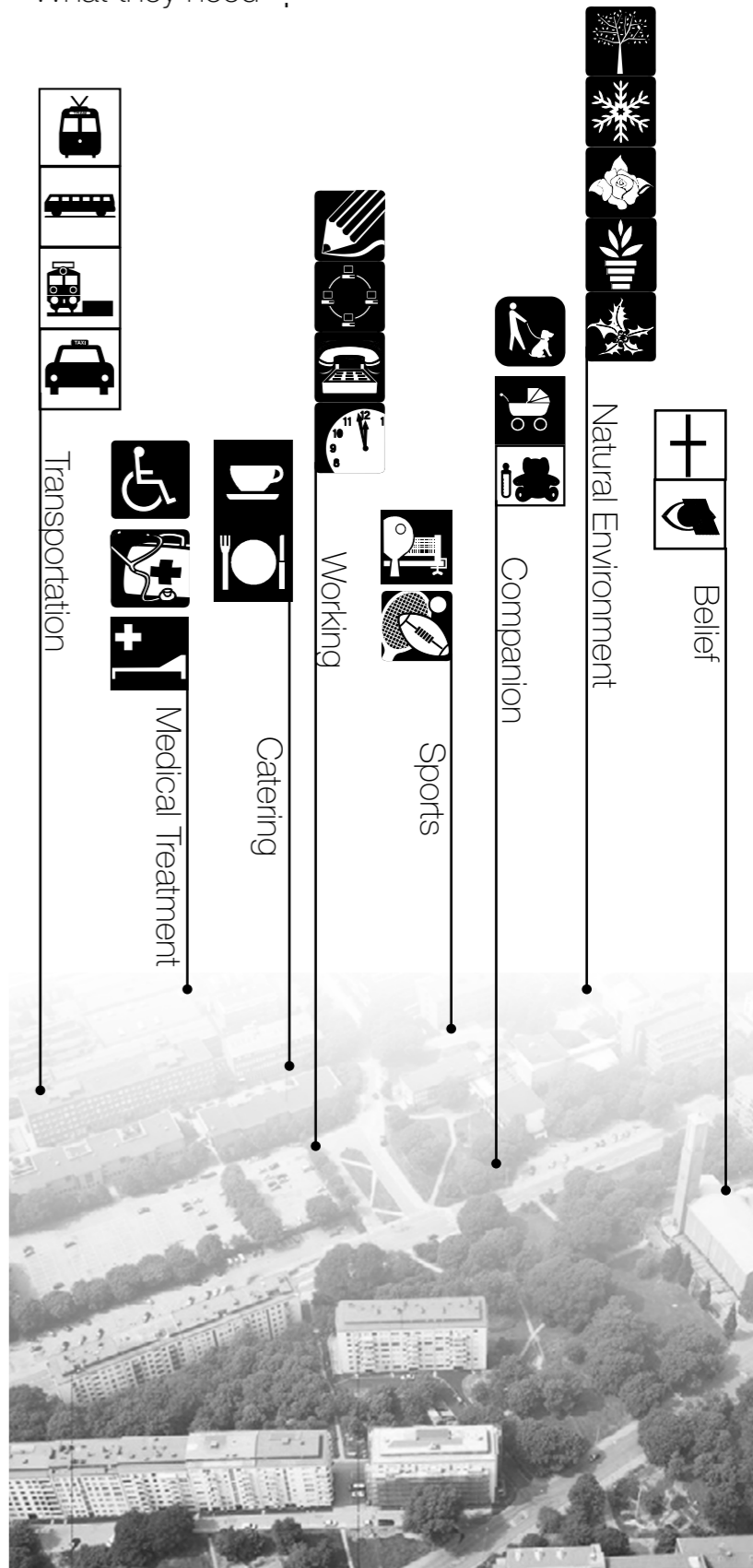


The site is used to be a parking space. On the south, it is a small cottage surrounded by a nice environment.

# Trygghetsboende

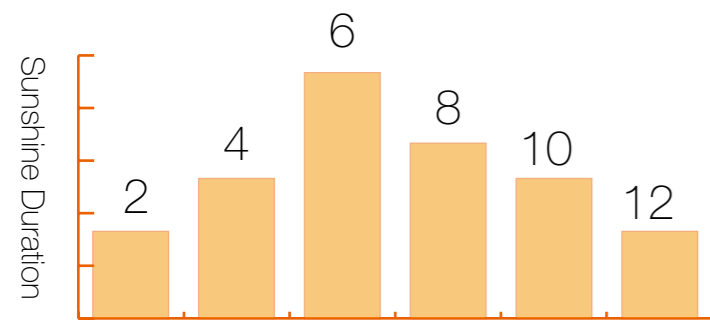
It is a kind of senior house limited with the people over 70 years old

What they need ?



# Site Analysis

## Sunlight analysis



February



April



June



August



October



December



Best Orientation



Entrance

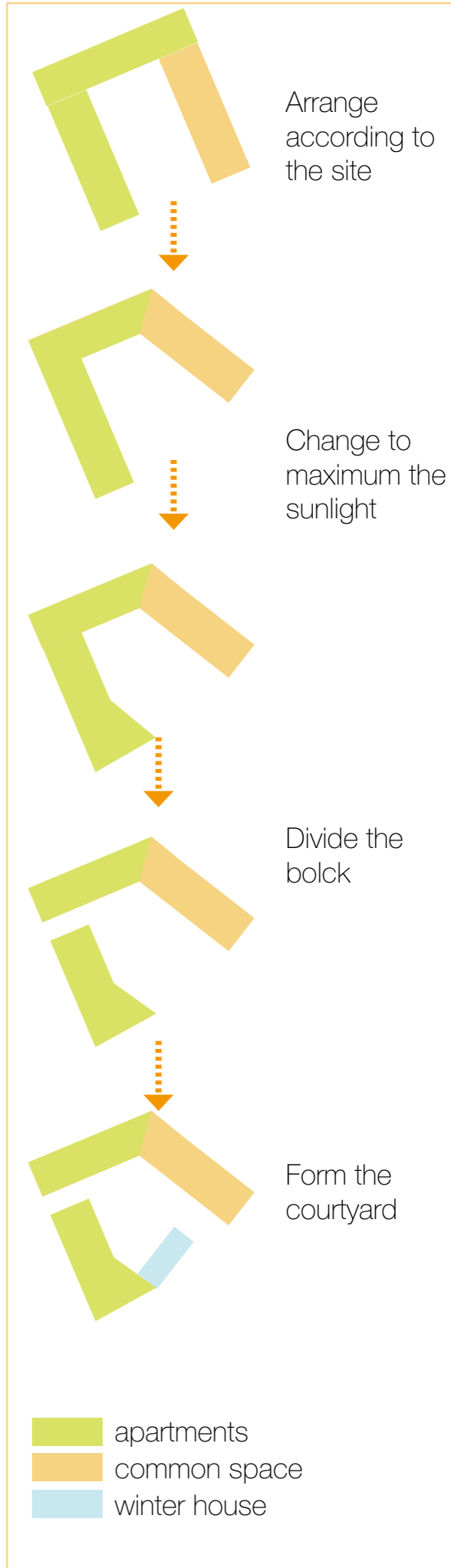


Noise

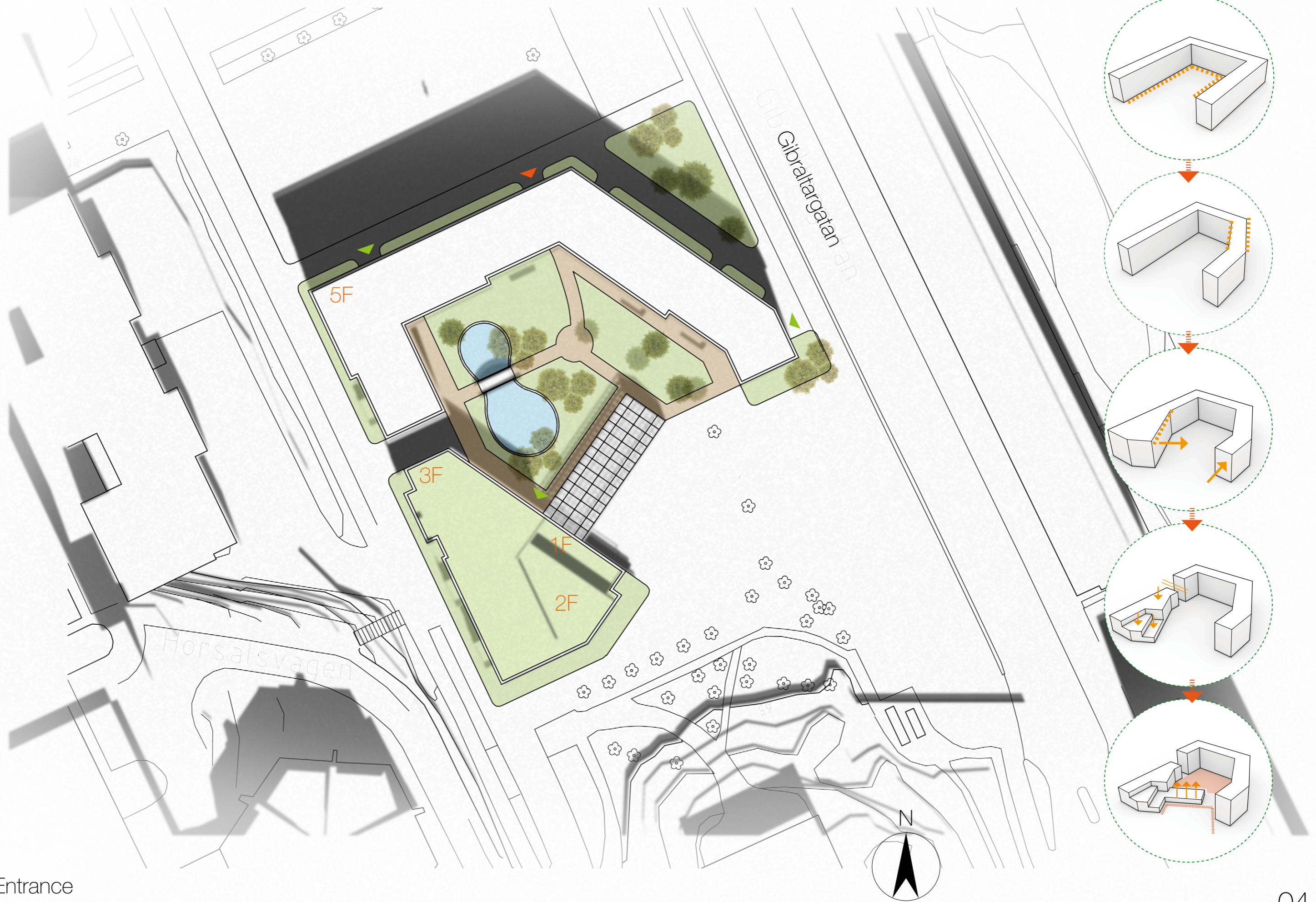


Roads

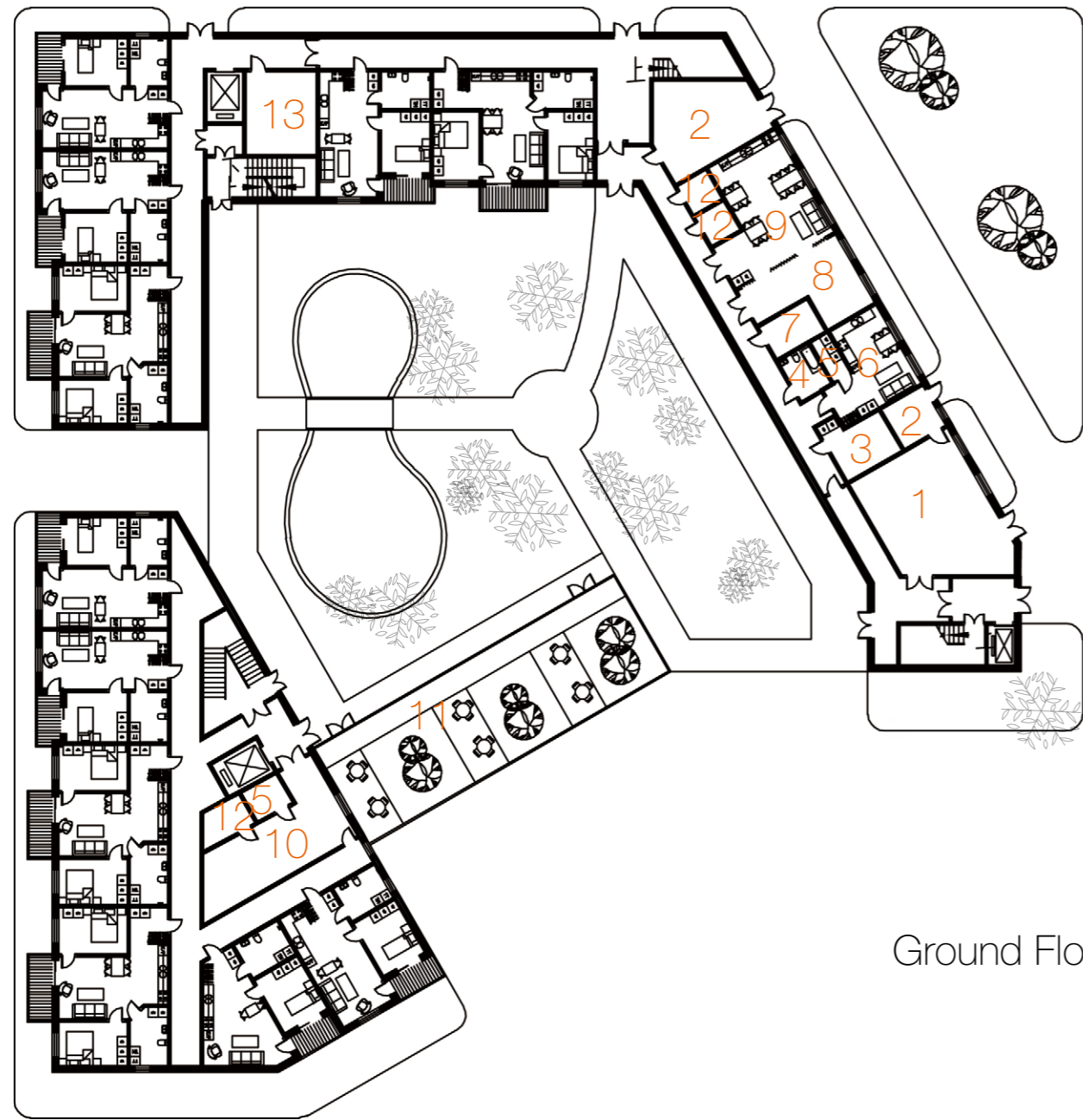
- Based on the basic situation of the site, trying to form a reasonable architectural blocks.
- Try to link the building with the small cottage by the natral environment.
- Form a courtyard inside and outside. The inside one is used only by the residents, and the outside one is used by both of the residents and municipalities.



# Site Plan 1:400



- ▲ Main Entrance
- ▲ Secondary Entrance



Ground Floor

- 1 Coffee Shop
- 2 Waste Room
- 3 Office
- 4 Bath Room
- 5 Changing Room
- 6 Lounge
- 7 Laundry Room
- 8 Hobby Room
- 9 Common Kitchen
- 10 Gym
- 11 Winter House
- 12 Toilet
- 13 Storage Room



- Common Space
- Commercial
- Working Space
- ⋯ Stream line



Second Floor



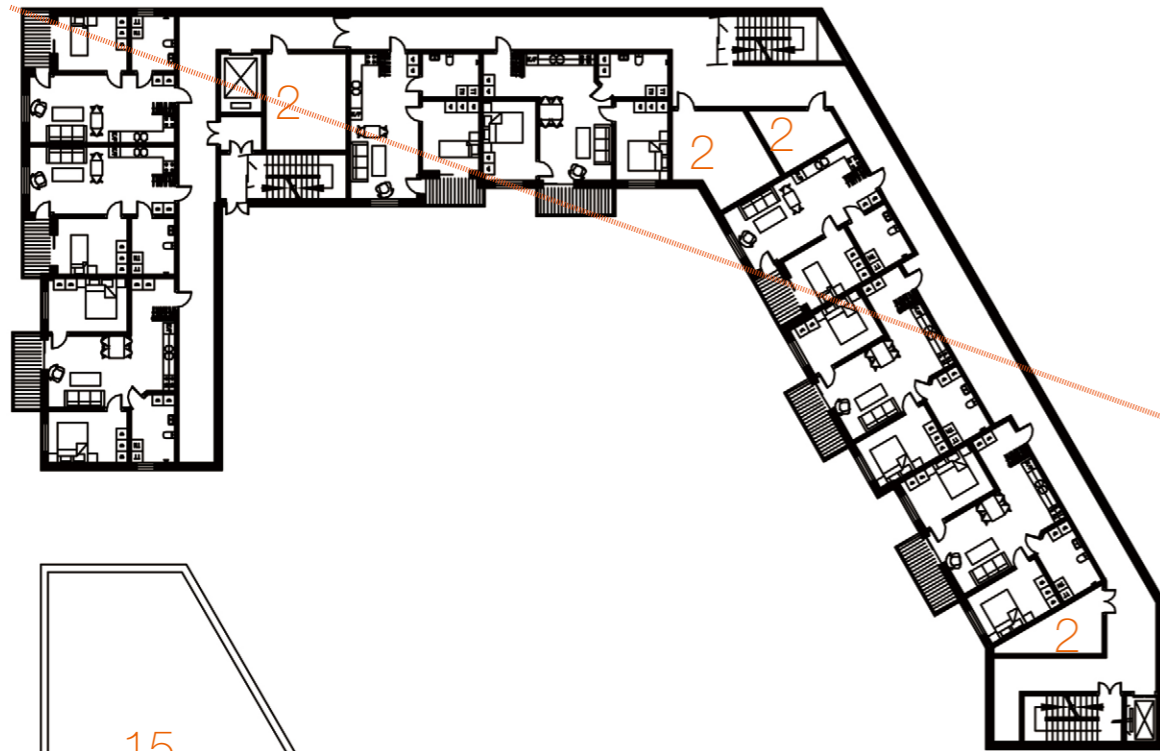
Third Floor

14 Roof Garden

15 Green Roof



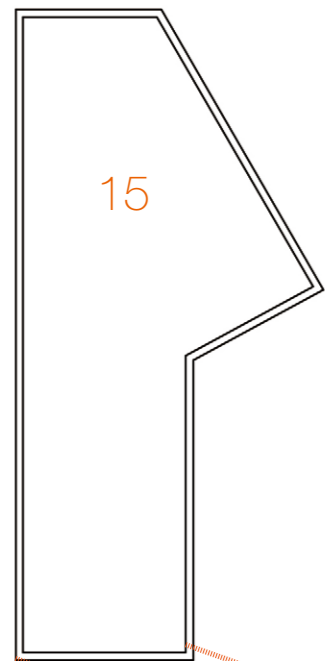
# Floor Plan 1:400



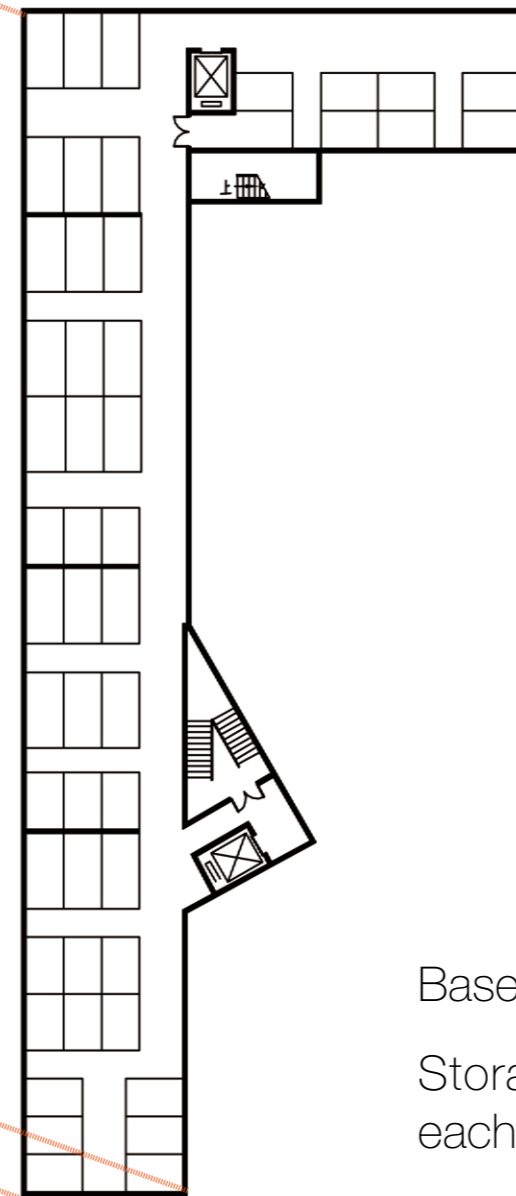
Fourth Floor



Fifth Floor



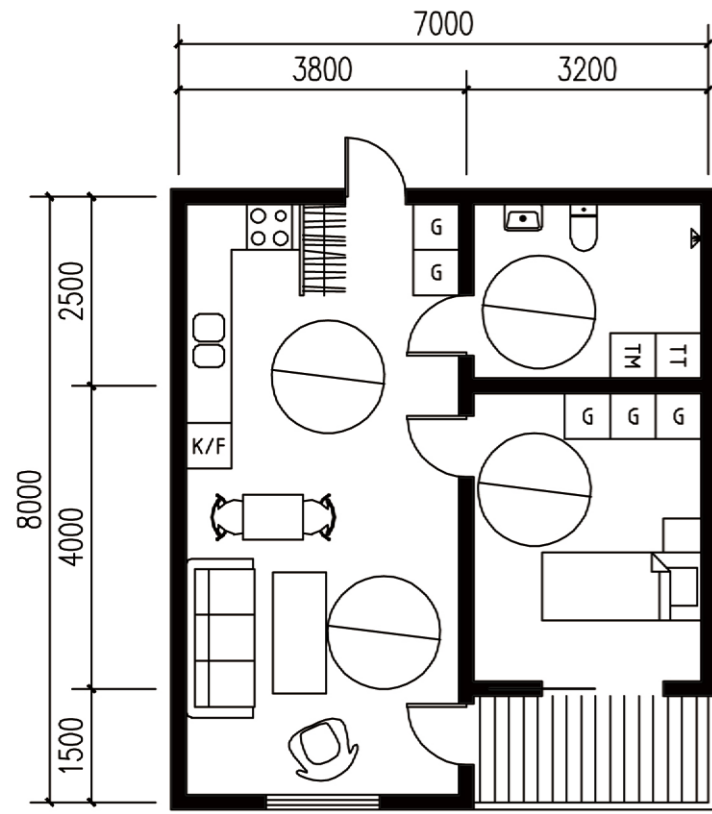
15



Basement

Storage room for each apartment

# Layout 1:100



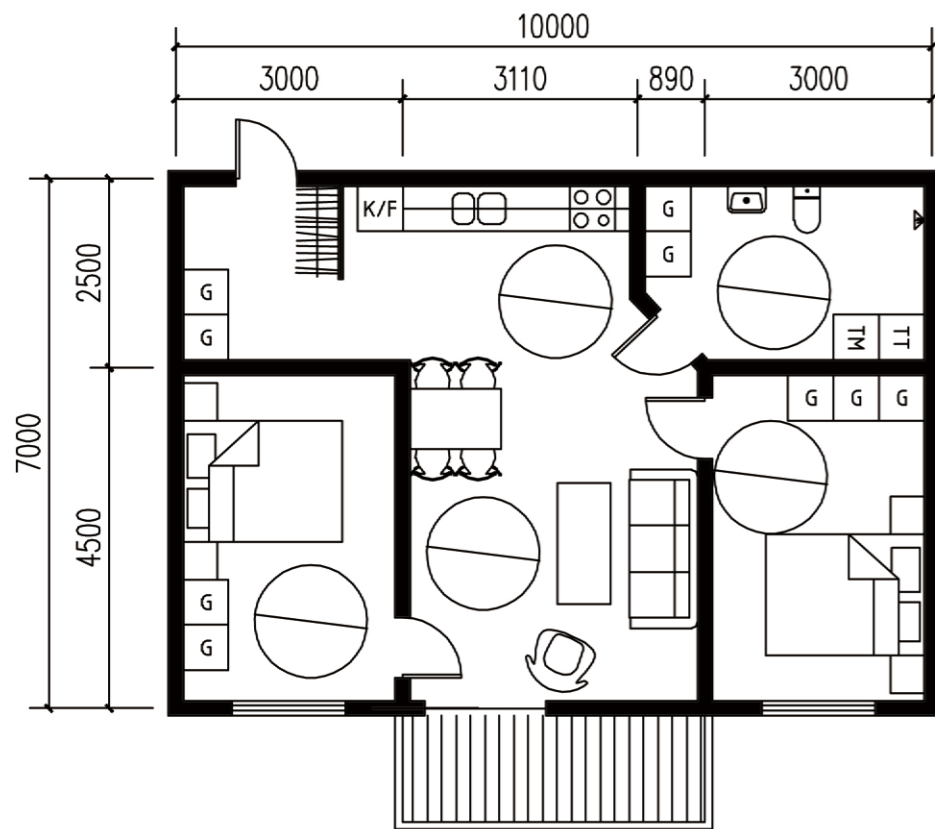
One-person apartment  
56 m<sup>2</sup>

## Flats Types

- 25 apartments for single person
- 25 apartments for two persons
- 2 apartments are guest rooms

### High Accessibility

- Radius of turning  $d > 1500\text{mm}$
- Beds accessible to both sides
- Handrails in the bathrooms

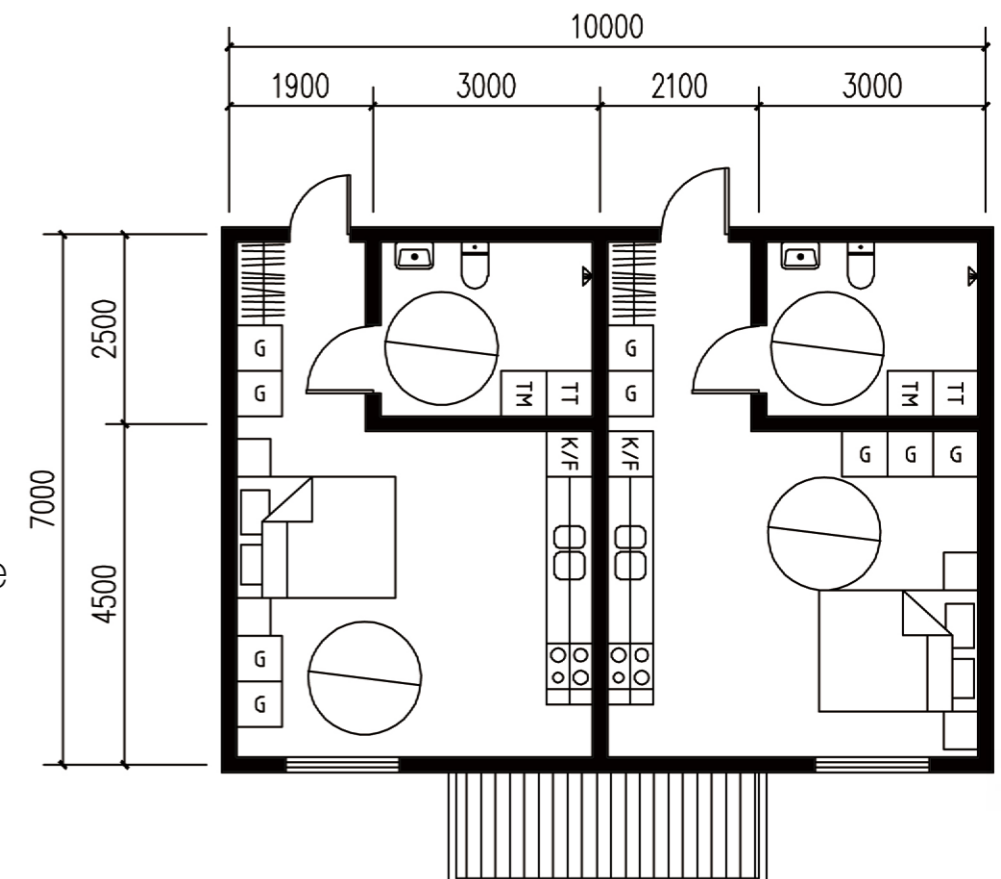


Two-person apartment  
70 m<sup>2</sup>

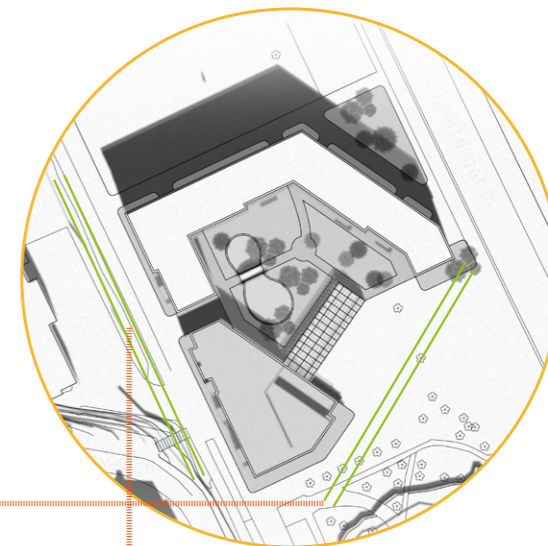
## Flexibility

a) The two-person apartment could be used by a couple or two people who share the kitchen and living room.

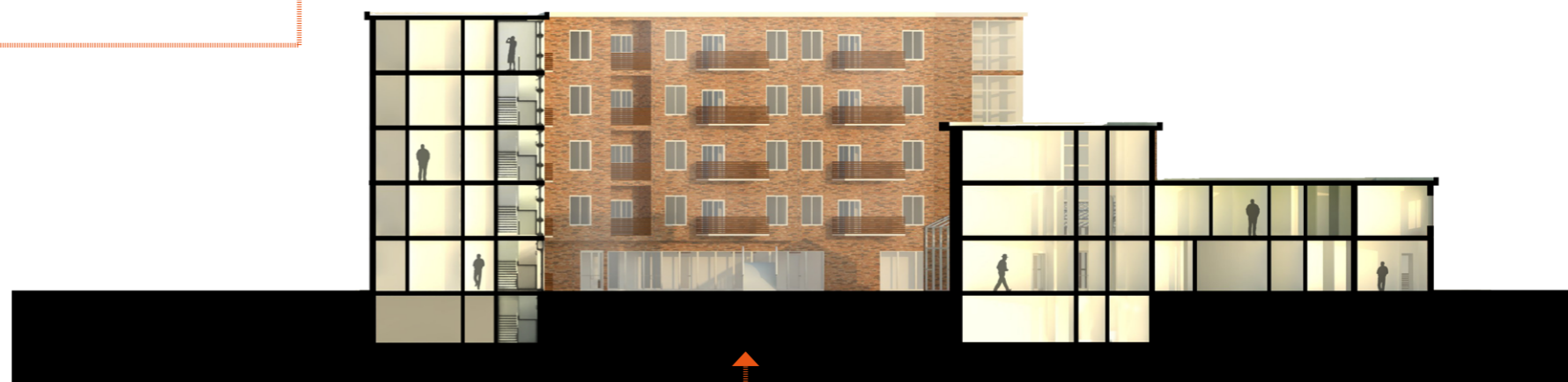
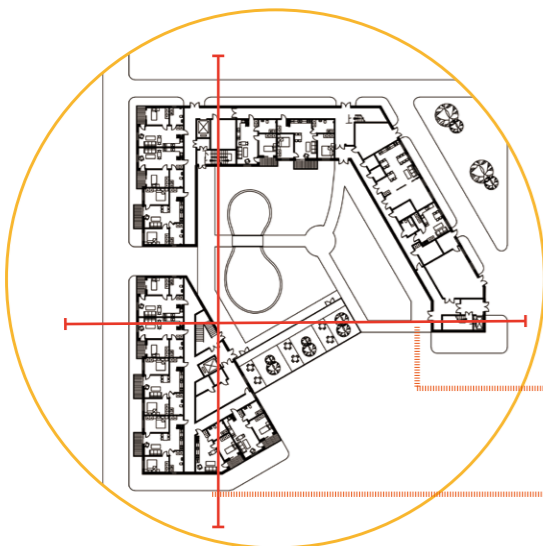
a) The two-person apartment could be transformed into two separated rooms by changing the light-weight wall inside the apartment.



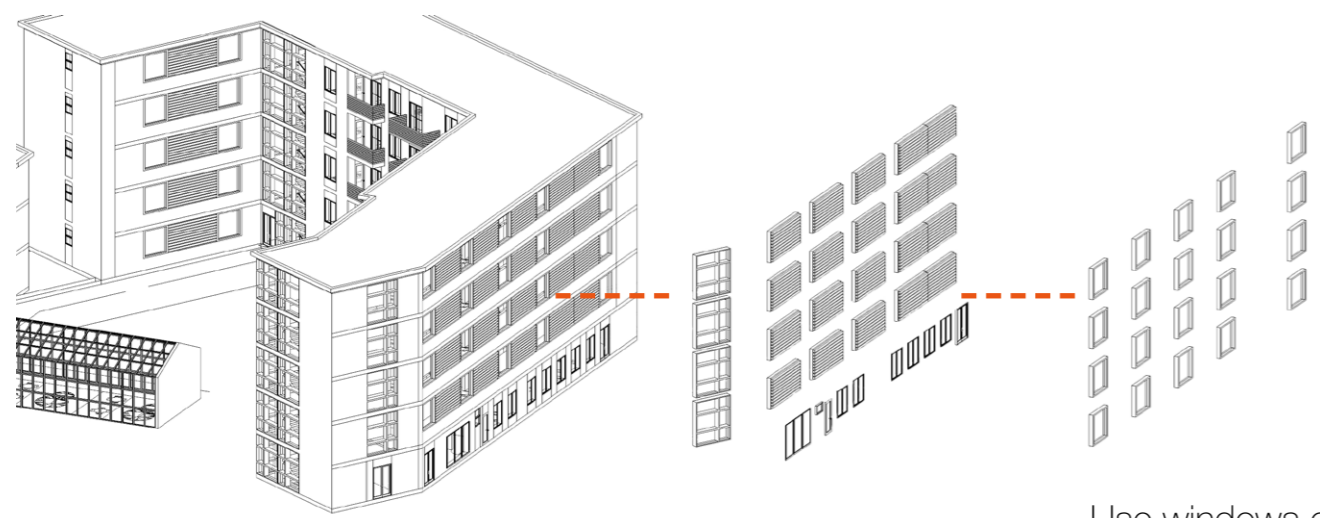
# Facade 1:400



# Section 1:400



Considering the privacy issue, use wooden board to block sight line.



Use windows in the staircase wall for natural sunlight

Use windows on the facade towards Gibraltar for sunlight



Building in the south-west is lower than the other part, aiming at allowing the sunlight to shine straight to the courtyard.

