

# DEMENTIA VILLAGE

BY ALICIA OPLAND, ANNA SWETZÉN & ILSE WESTVEER



# THE PROJECT

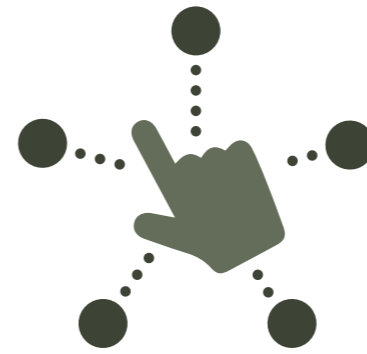
This project's aim was to create a dementia village for the municipality of Utby, Sweden which complements its site and neighbourhood. In order to realise this, the materials are inspired by both the tree crown and trunk present on site as well as by the designs of the surrounding villas.

Another way in which the project aims to integrate the dementia village with Utby is by inviting the community to the village. The dementia village is purposefully designed in a way that it can accommodate a variety of communal activities. The theatre, pool and restaurant along with the gardens are meant to attract the community to

the village, creating a meeting place for the different generations of Utby dwellers.

Part of a village is also places to gather. The project contains a number of spaces for the residents to gather together such as activity rooms, cafes and the like, but one space that is quite important for the function of the village is the chapel. The chapel is placed on a peaceful, more private part of the site and will provide the residents and family members with a space to mourn but also a place to come together after the passing of one of the residents.

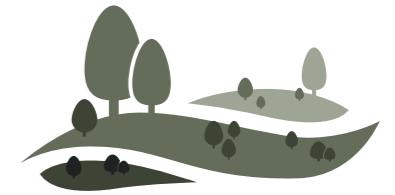
## GOALS



Choice and freedom  
Stimulating & activating



Calming and peaceful  
Soft, continuity & flow



Integration of landscape  
Preservation and enrichment

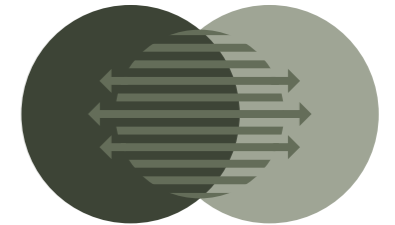
## CONCEPT



**THE SITE**  
Flow within landscape  
Taking advantage of the varied height



**THE MATERIAL**  
Material and shape  
Big focus, chosen with intention



**THE GREENERY**  
Softening the transition  
of outdoor-indoor

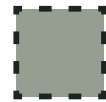
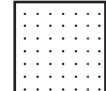

## DESIGN SOLUTIONS




**THE SITE**  
Just as the variation within the landscape offers interesting places, the variation will be the same for the building which shall create an environment which is both stimulating and activating within a safe environment.

**THE MATERIAL**  
The materials and shapes are inspired by the surrounding neighbourhood to create a sense of familiarity. Besides, the chosen colours for the facade will represent the foresty character of the site. This will also help to blend into the existing environment. Lastly, by breaking up the roofing, the facility will look smaller in scale.

**THE GREENERY**  
The surrounding greenery shall inspire the building but also become a part of it. The outside and inside shall be connected in many ways, such as interconnecting furniture, or, when connection is not possible, the inside shapes and material shall be inspired by the outdoor.

# SITE ANALYSIS

-  SITE BORDER
-  TO NOT BUILD ON
-  SOMEWHAT FLAT AREA

-  GENERAL DIRECTION OF INCLINE
-  POSSIBLE ENTRANCE TO SITE
-  INTERESTING VIEWPOINT

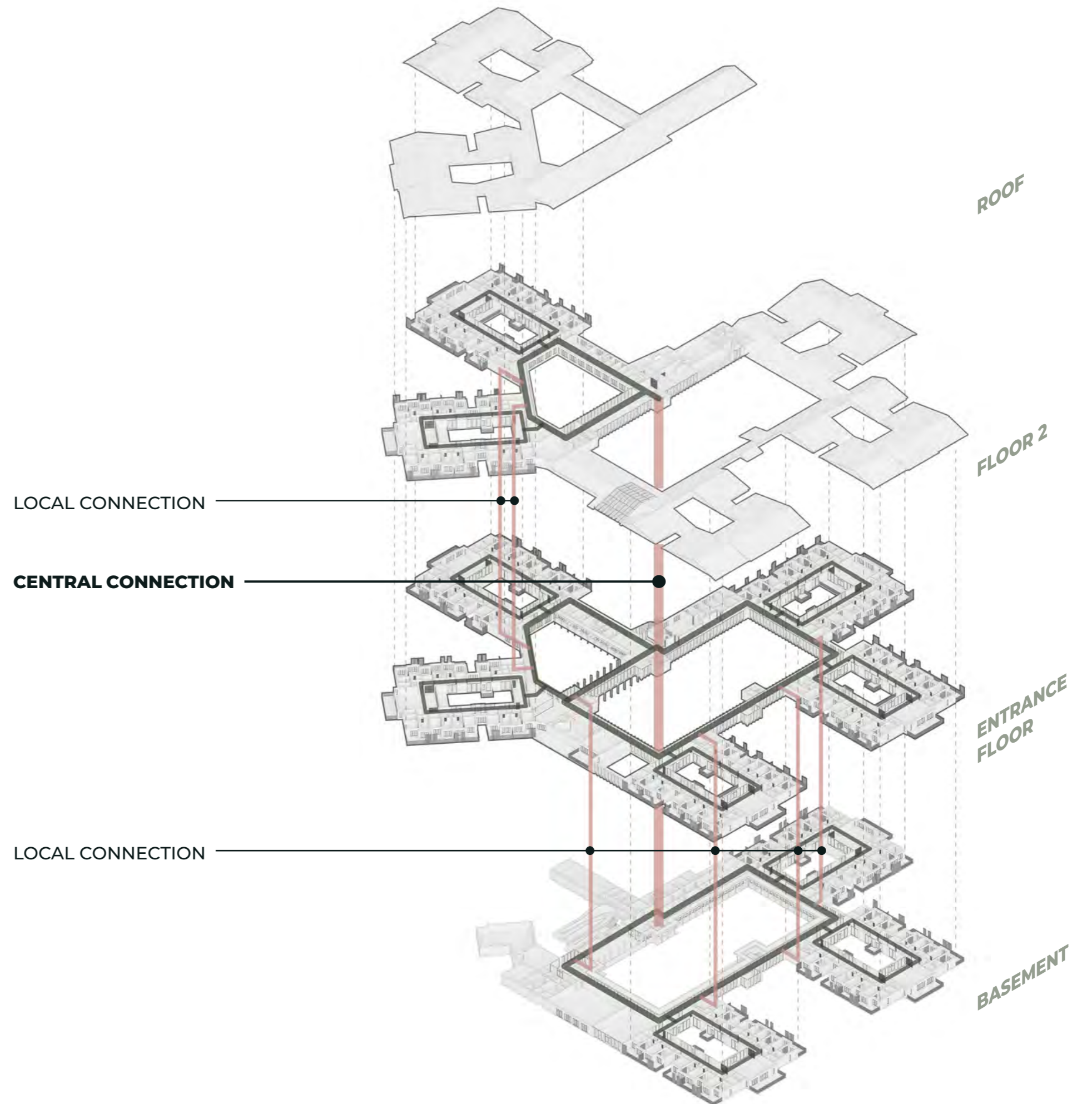
In order to realise the goals of this project and to work with the interesting topography, it was important to first carefully analyse the site and find its strengths and weaknesses. Since the dementia village will host 100 residents, and it is rather larger in scale than the neighbouring houses, the edges of the site will mostly be avoided. Furthermore, the design will be integrated into the landscape, meaning that it is important to know the general direction of the incline. To build further upon this, the flattest areas are located and will be used for the garden in order

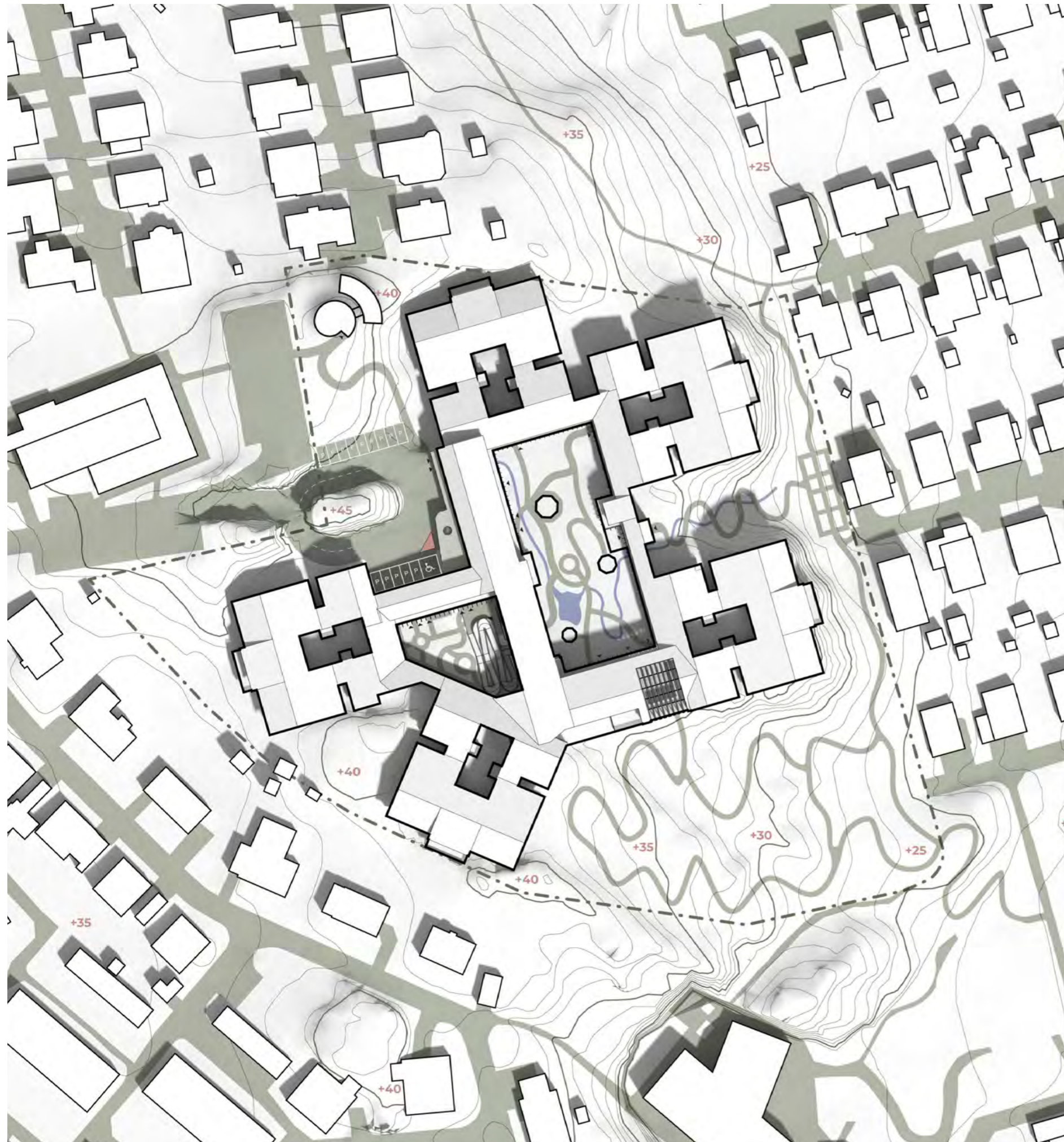
to make them as accessible as possible. This aligns with our stimulating and activating goal. Lastly, where the most scenic viewpoint is located, we have chosen to place the connection between the inside and outside of the dementia village, creating a natural transition to the surrounding forest.



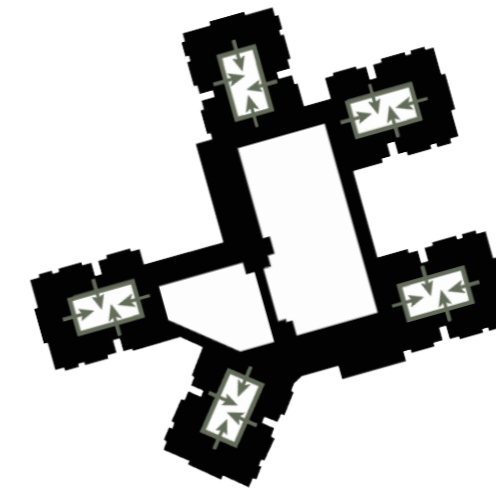
# COMMUNICATION AND FUNCTION

The dementia village is thoughtfully connected at a centralized point from which all floors and units can be reached. One would enter at the entrance floor, situated in the middle, on which most public facilities is placed. The entrance floor would also connect to the upper garden. A floor above holds 2 units, a restaurant, and all supporting rooms for the staff. At the lowest level the main garden can be reached. This floor holds some public facilities and a beautiful wintergarden.

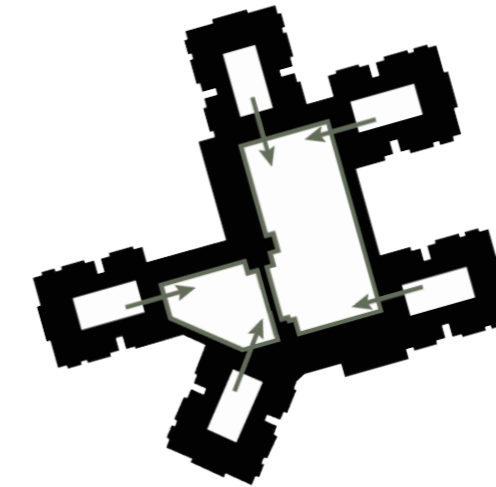




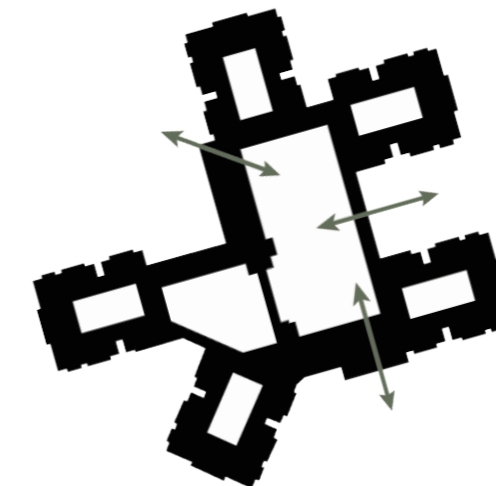
# SITE PLAN



**CONNECTION TO THE COURTYARDS**



**CONNECTION TO THE GARDENS**



**CONNECTION TO THE OUTSIDE**



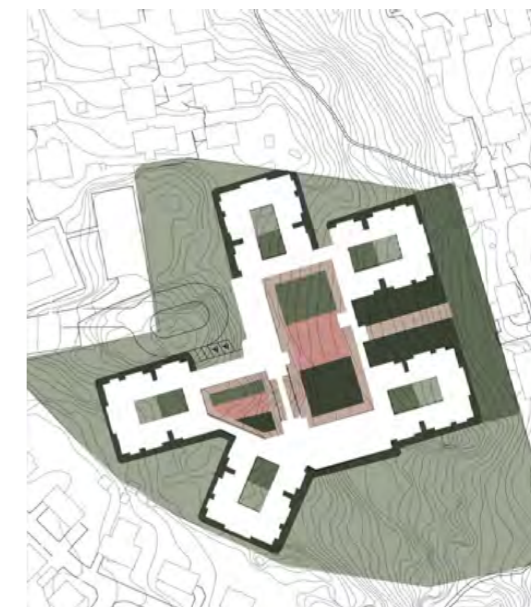


# GARDENS



- FOREST
- GRASS
- ALLOTMENT GARDEN
- ROCK

## EXISTING GREENERY



- REFUGE
- SOCIAL
- EXISTING NATURE
- FAMILIARITY & SENSES
- STIMULATE

## NEW CONCEPT ZONES

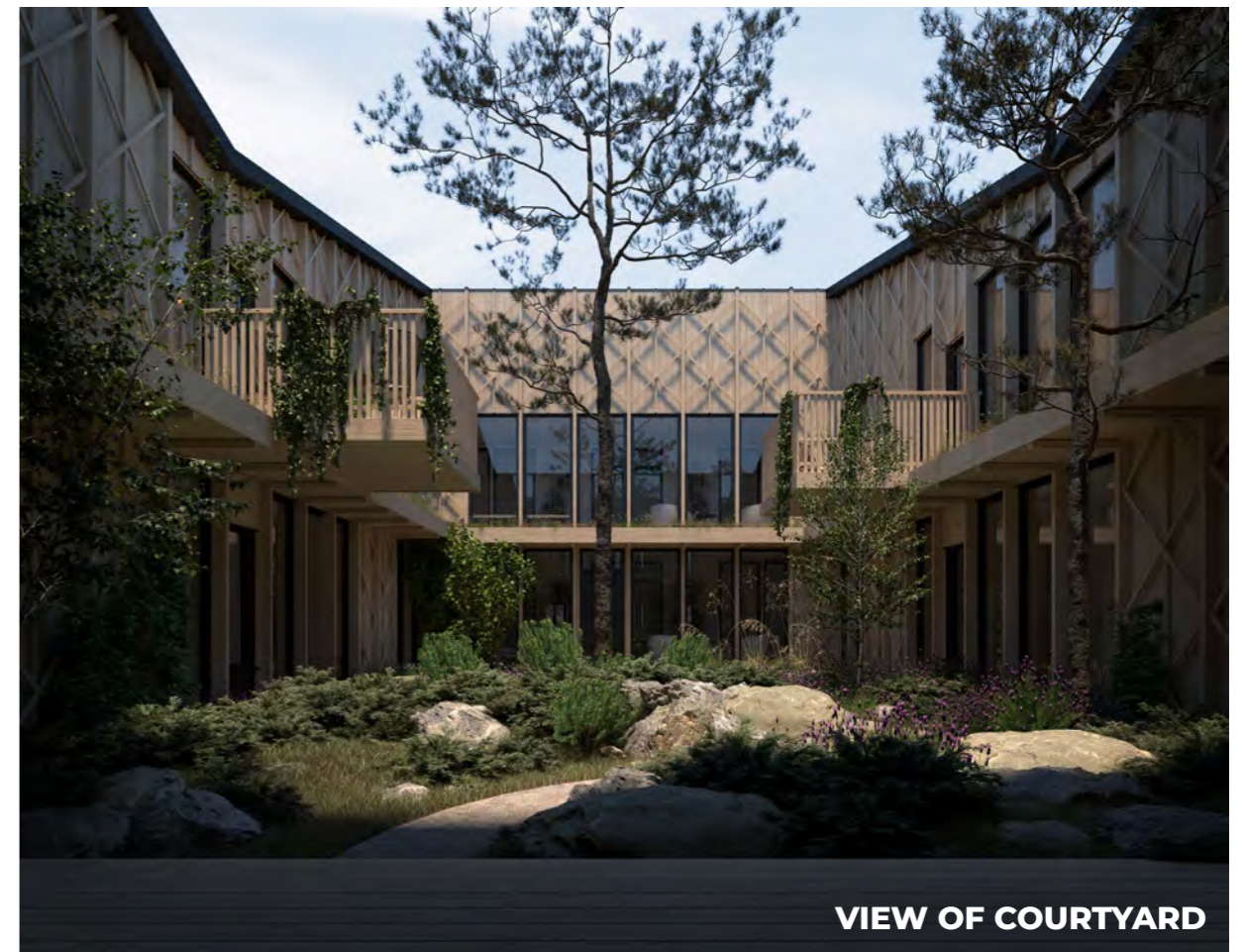




ENTRANCE FLOOR

BASEMENT

WINTER GARDEN



VIEW OF COURTYARD



COURTYARD



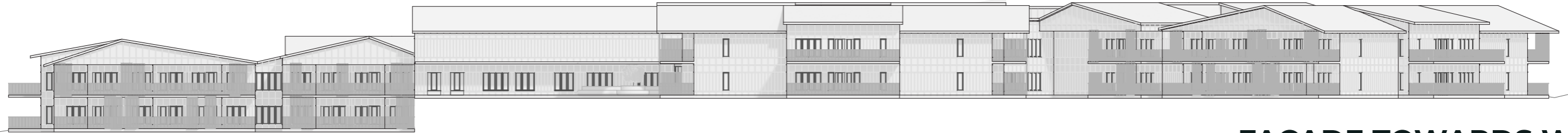


**FACADE PATTERN**

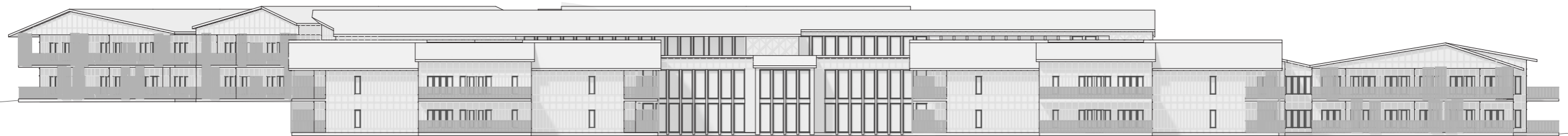
# FACADES



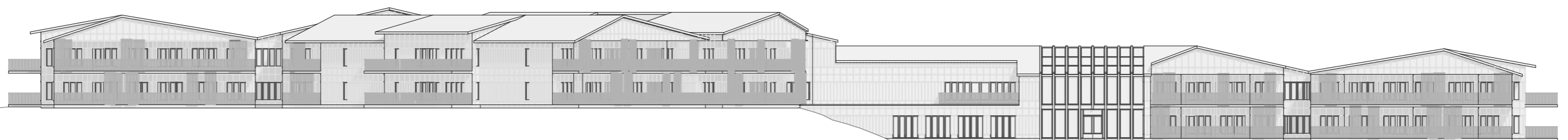
**FACADE TOWARDS NORTH**



**FACADE TOWARDS WEST**



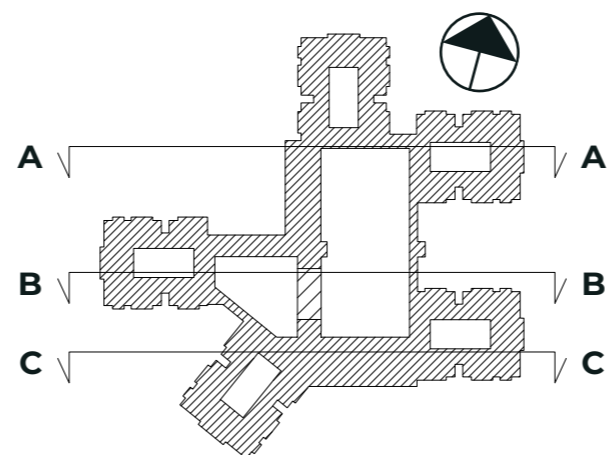
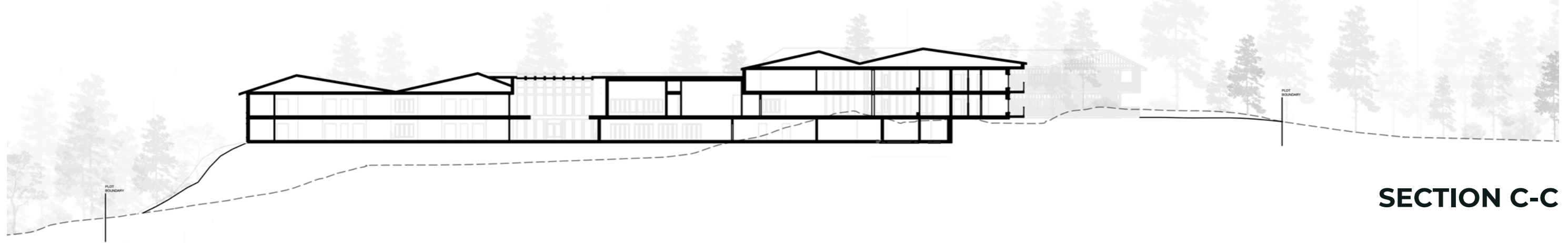
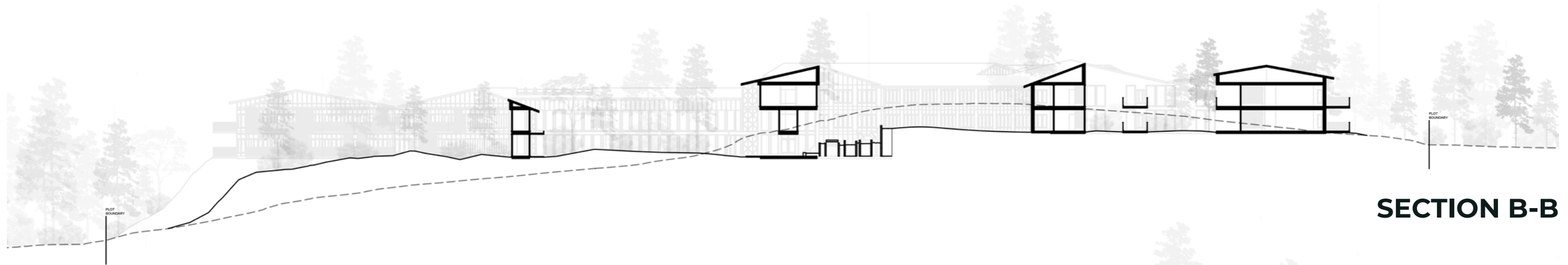
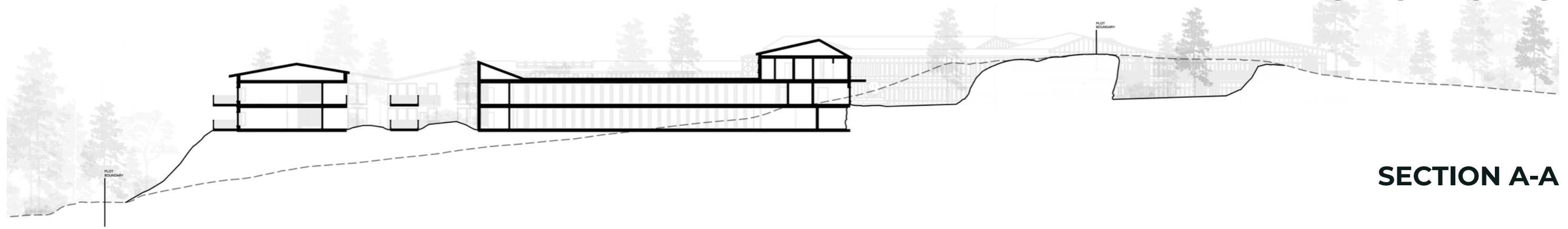
**FACADE TOWARDS EAST**



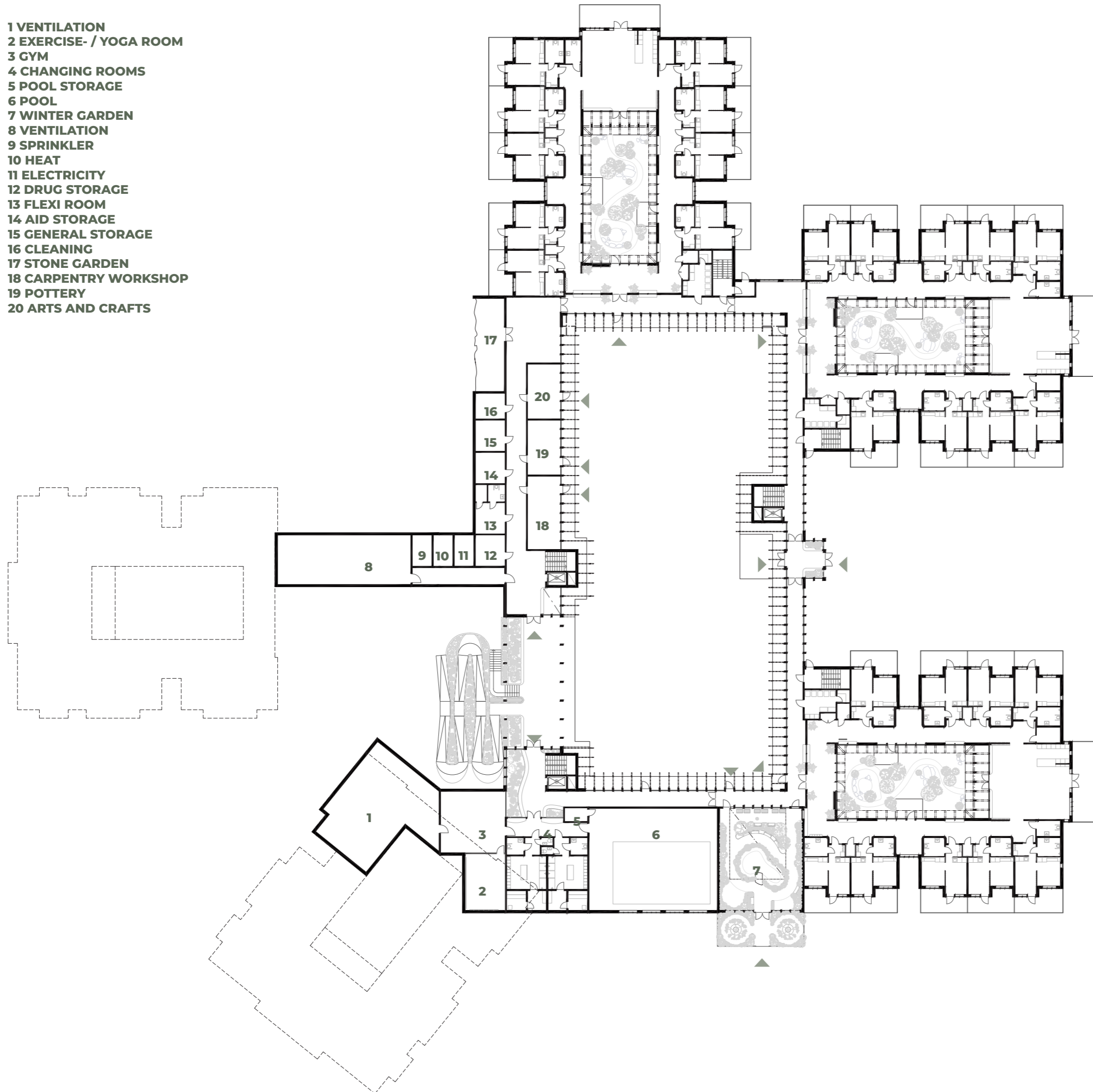
**FACADE TOWARDS SOUTH**



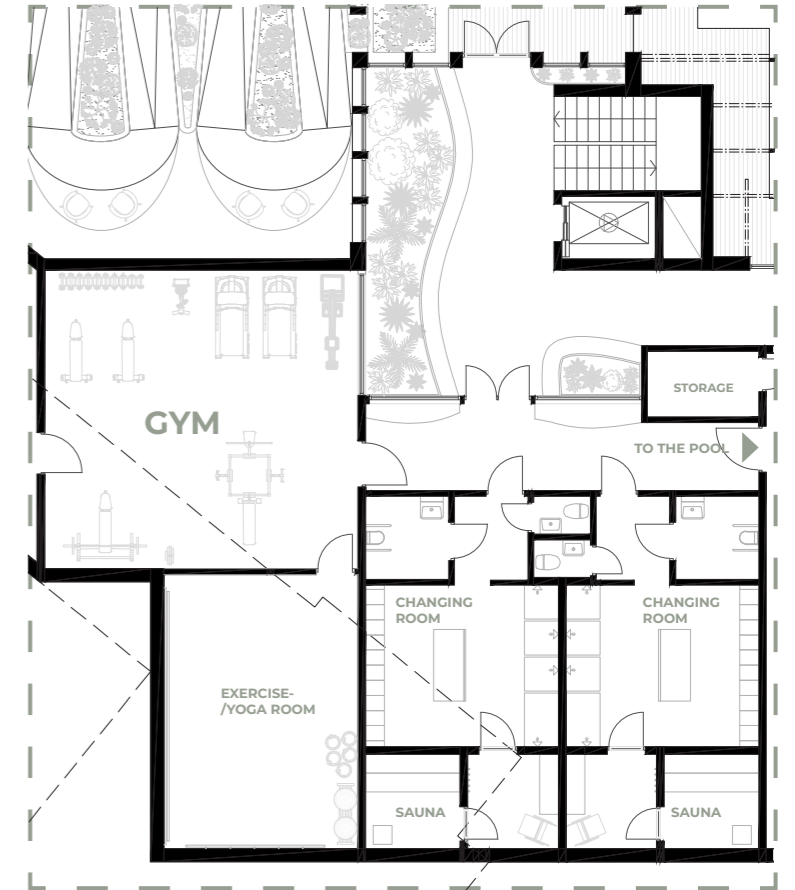
# SECTIONS



- 1 VENTILATION
- 2 EXERCISE- / YOGA ROOM
- 3 GYM
- 4 CHANGING ROOMS
- 5 POOL STORAGE
- 6 POOL
- 7 WINTER GARDEN
- 8 VENTILATION
- 9 SPRINKLER
- 10 HEAT
- 11 ELECTRICITY
- 12 DRUG STORAGE
- 13 FLEXI ROOM
- 14 AID STORAGE
- 15 GENERAL STORAGE
- 16 CLEANING
- 17 STONE GARDEN
- 18 CARPENTRY WORKSHOP
- 19 POTTERY
- 20 ARTS AND CRAFTS



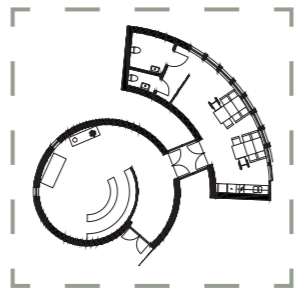
# BASEMENT



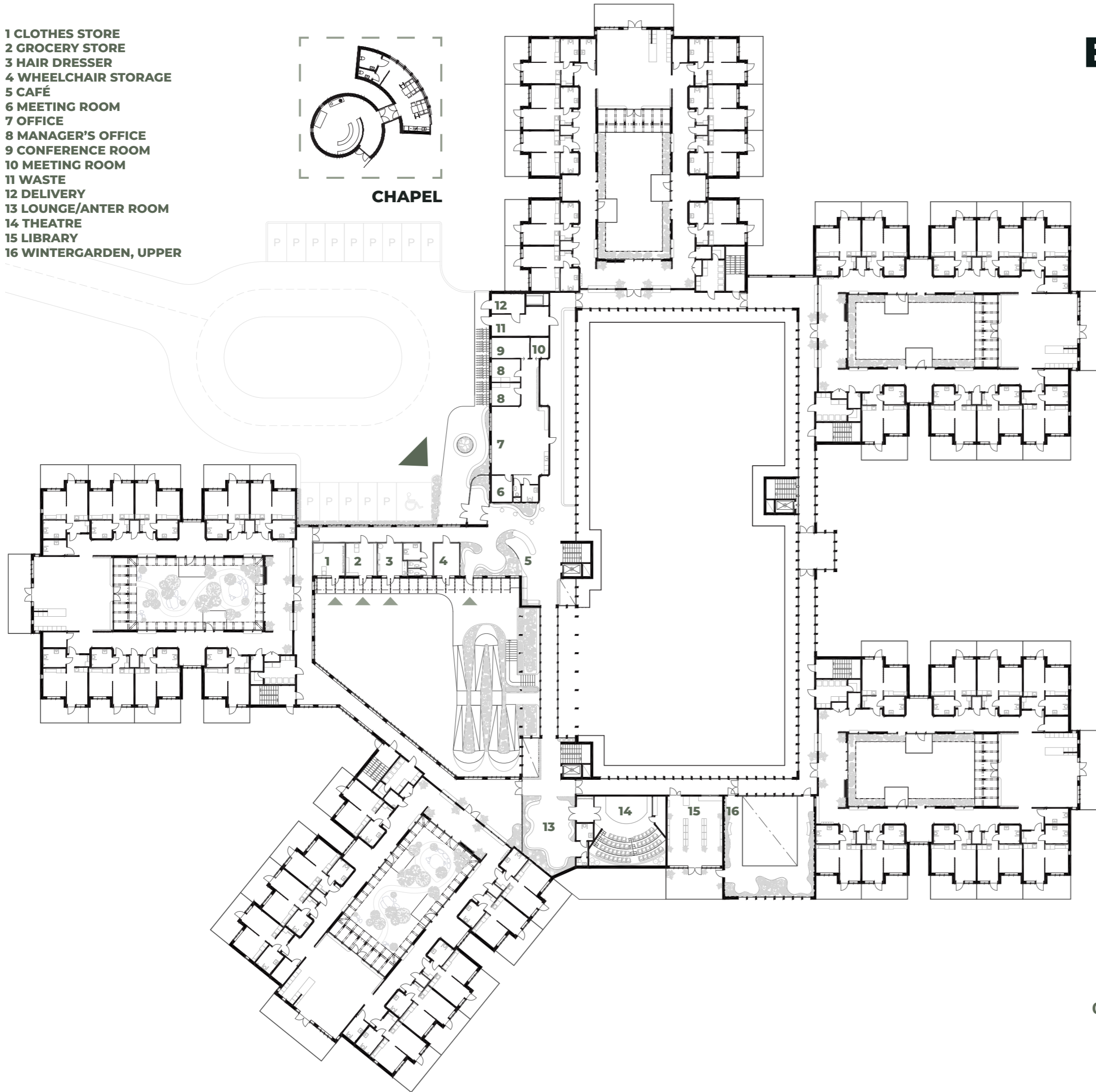
THE GYM



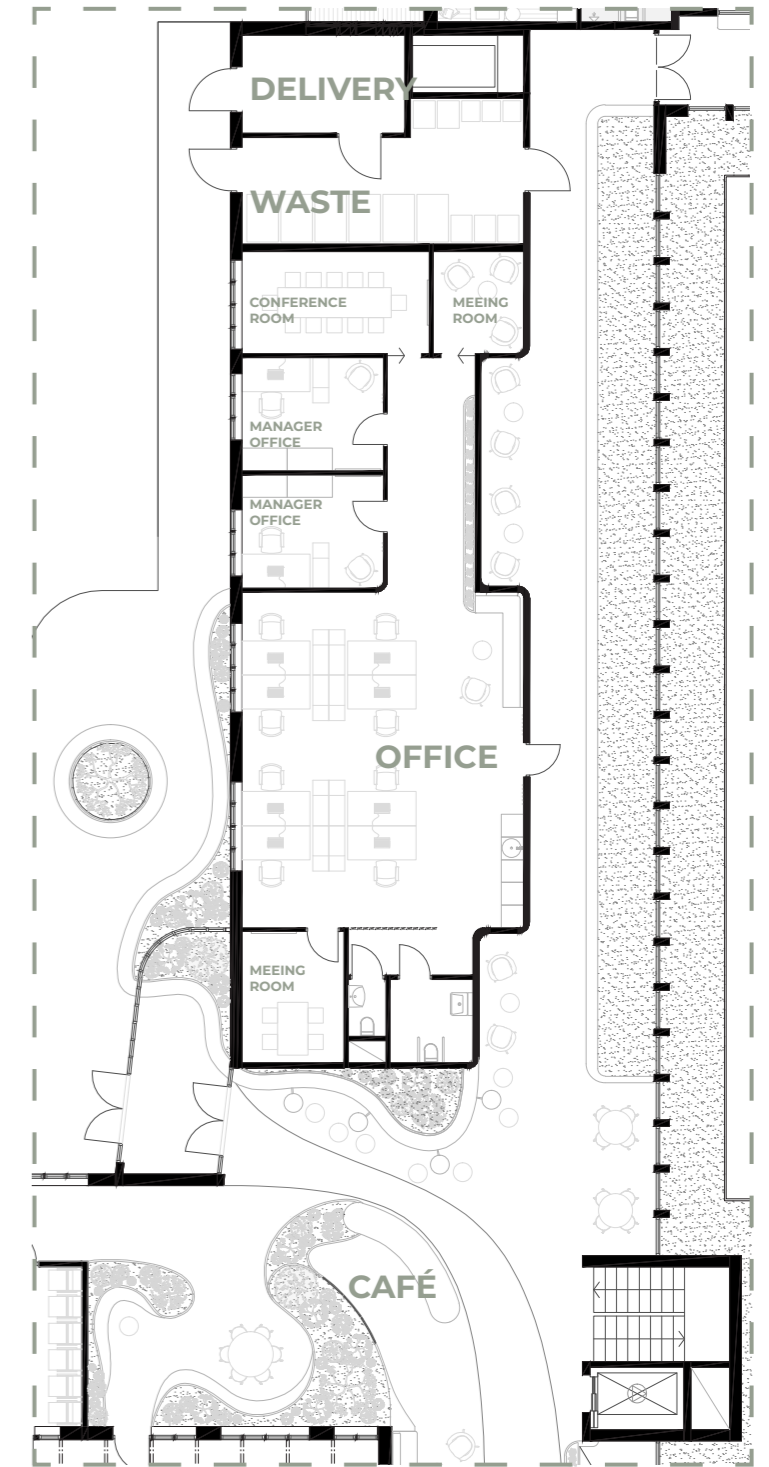
- 1 CLOTHES STORE
- 2 GROCERY STORE
- 3 HAIR DRESSER
- 4 WHEELCHAIR STORAGE
- 5 CAFÉ
- 6 MEETING ROOM
- 7 OFFICE
- 8 MANAGER'S OFFICE
- 9 CONFERENCE ROOM
- 10 MEETING ROOM
- 11 WASTE
- 12 DELIVERY
- 13 LOUNGE/ANTER ROOM
- 14 THEATRE
- 15 LIBRARY
- 16 WINTERGARDEN, UPPER



CHAPEL



# ENTRANCE FLOOR



ENTRANCE AND OFFICE

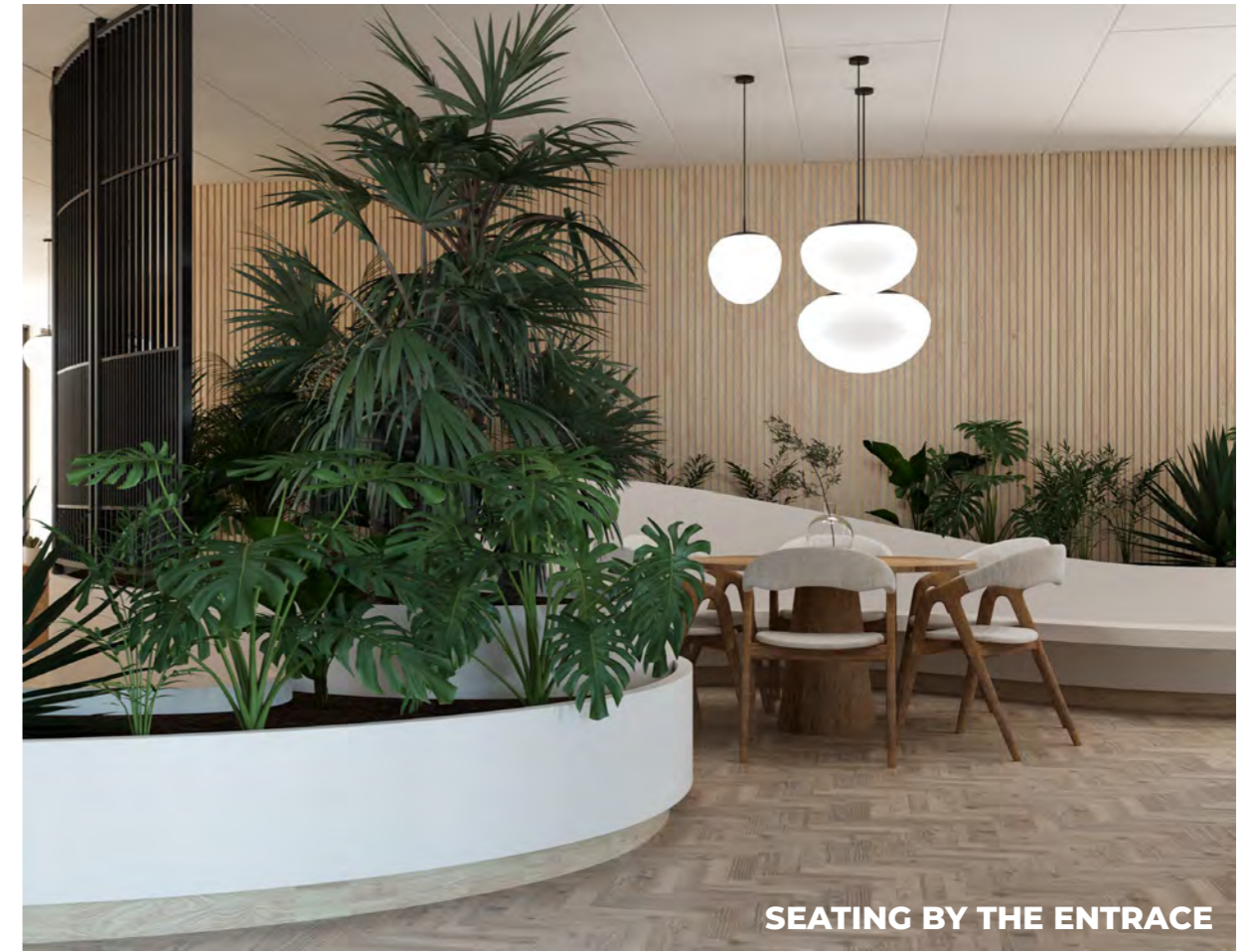


0 10 50m

SCALE 1:500 (A3)



SEATING BY THE ENTRANCE

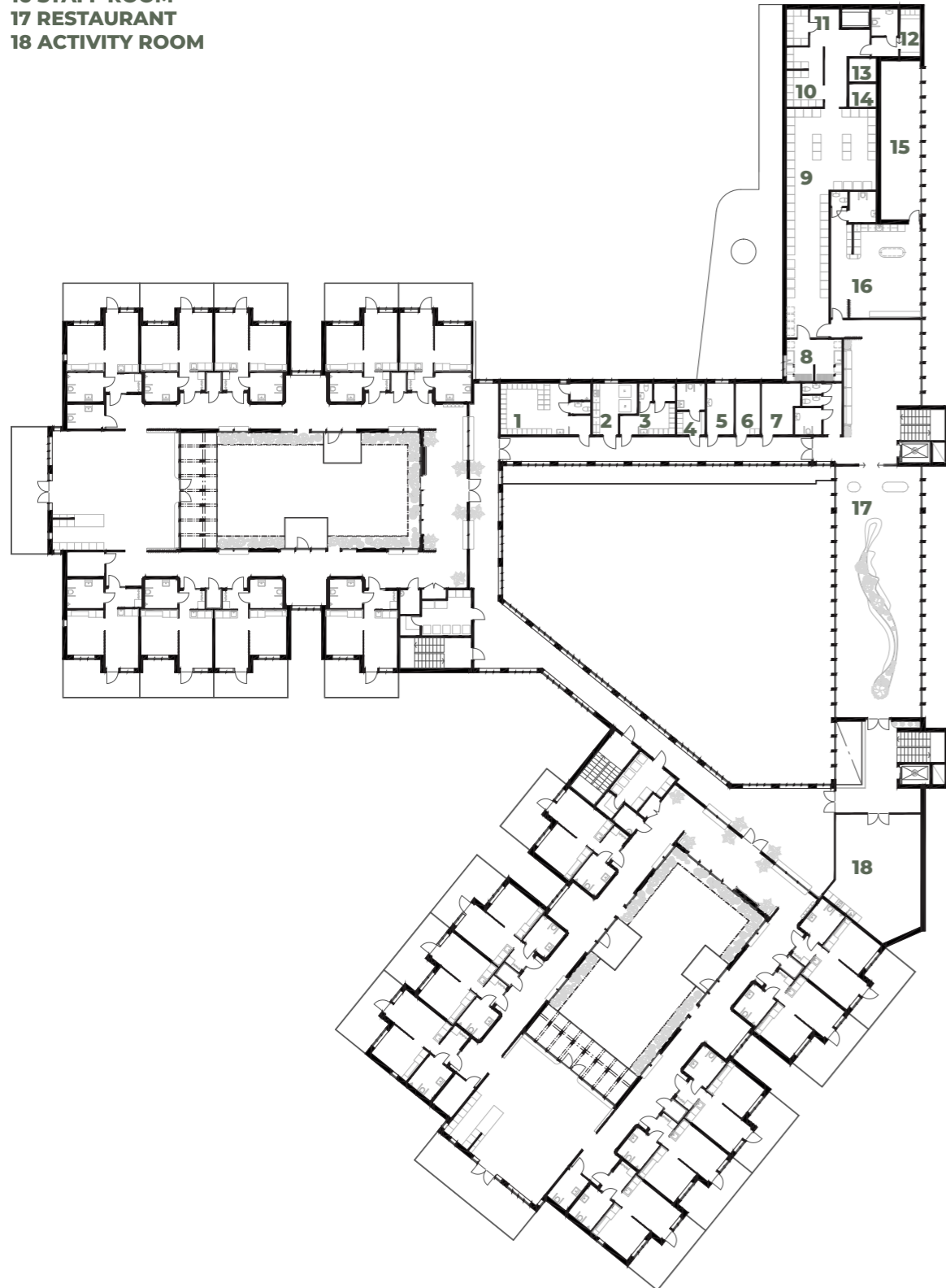


SEATING BY THE ENTRANCE

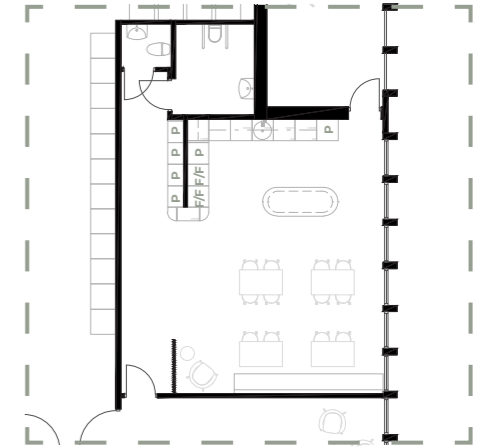


SEATING BY THE ENTRANCE

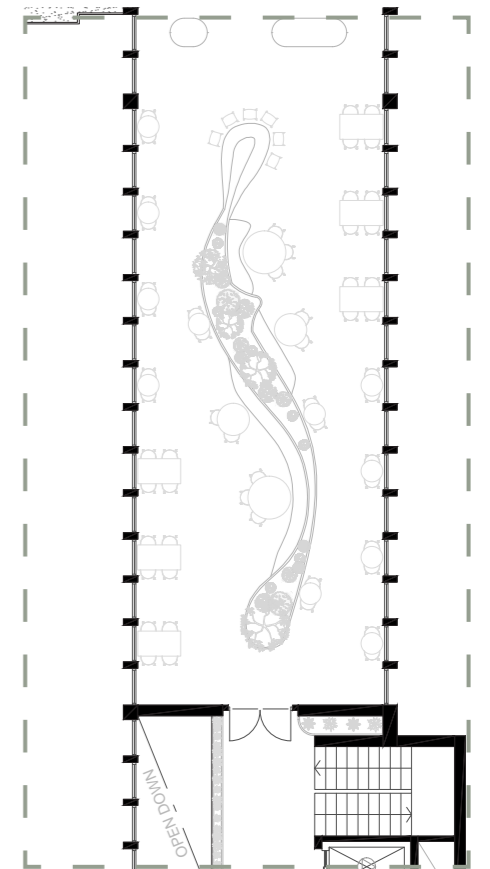
- 1 WOMEN'S LOCKERS
- 2 LAUNDRY
- 3 MEN'S LOCKERS
- 4 MIXED LOCKERS
- 5 WELLNESS ROOM
- 6 RELAXING ROOM
- 7 STORAGE
- 8 DISHES
- 9 KITCHEN
- 10 PREPP & DELIVERY
- 11 STORAGE
- 12 LOCKERS
- 13 FREEZER
- 14 FRIDGE
- 15 BALCONY
- 16 STAFF ROOM
- 17 RESTAURANT
- 18 ACTIVITY ROOM



# FLOOR 2



**STAFF ROOM**



**RESTURANT**





**PUBLIC RESTURANT**



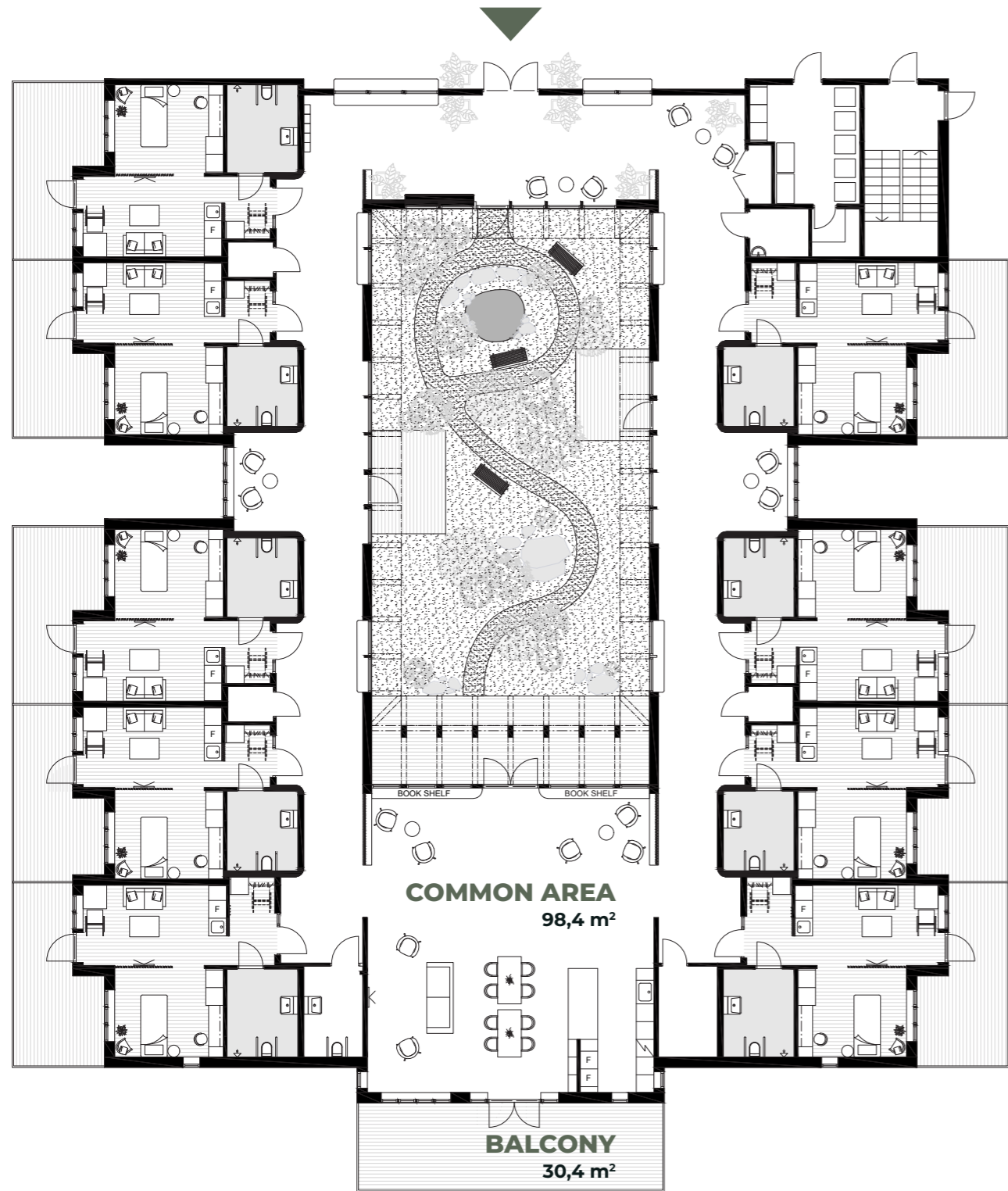
**KITCHEN IN STAFF ROOM**



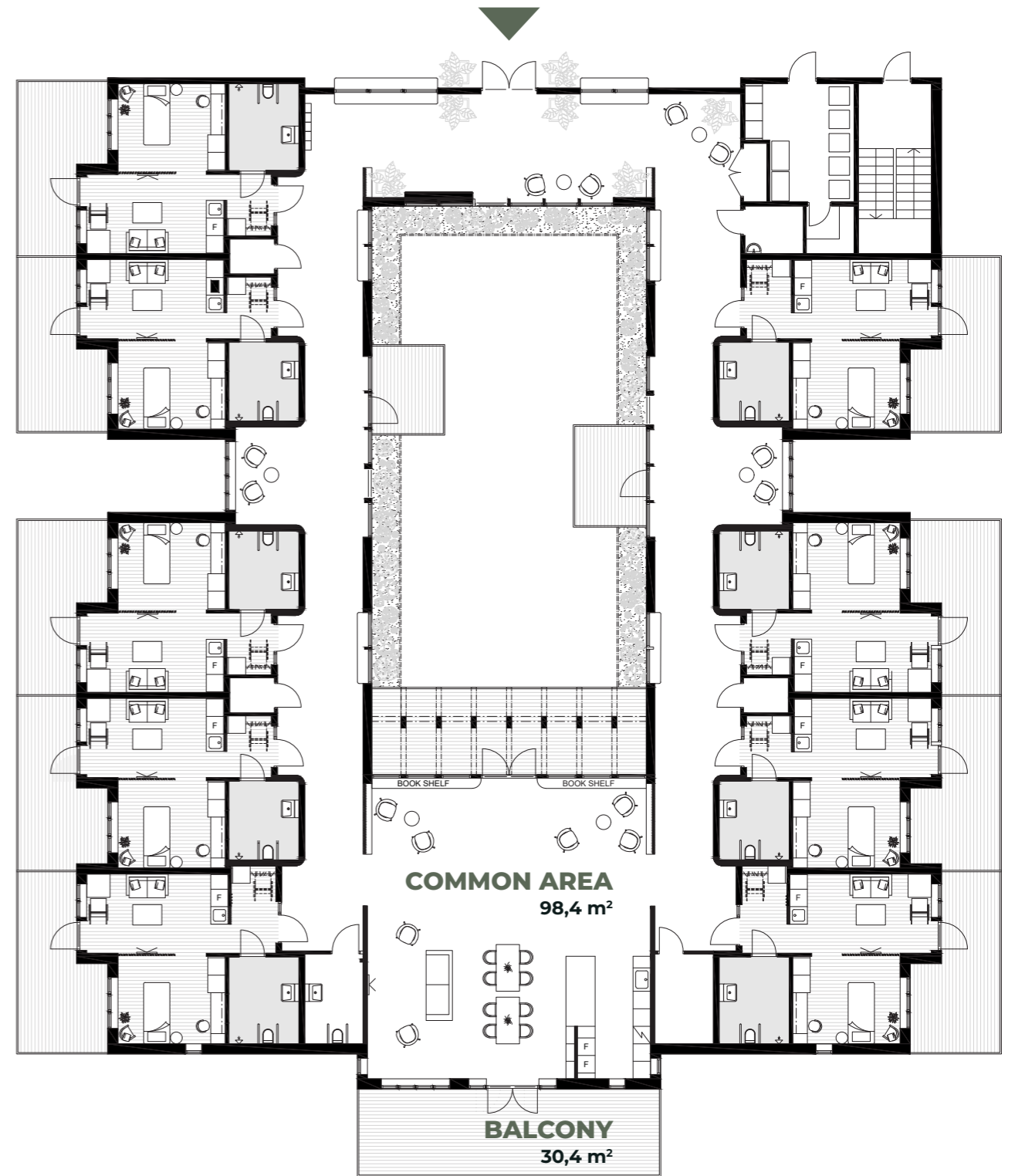
**SEATING IN STAFF ROOM**



# UNITS - FIRST FLOORS

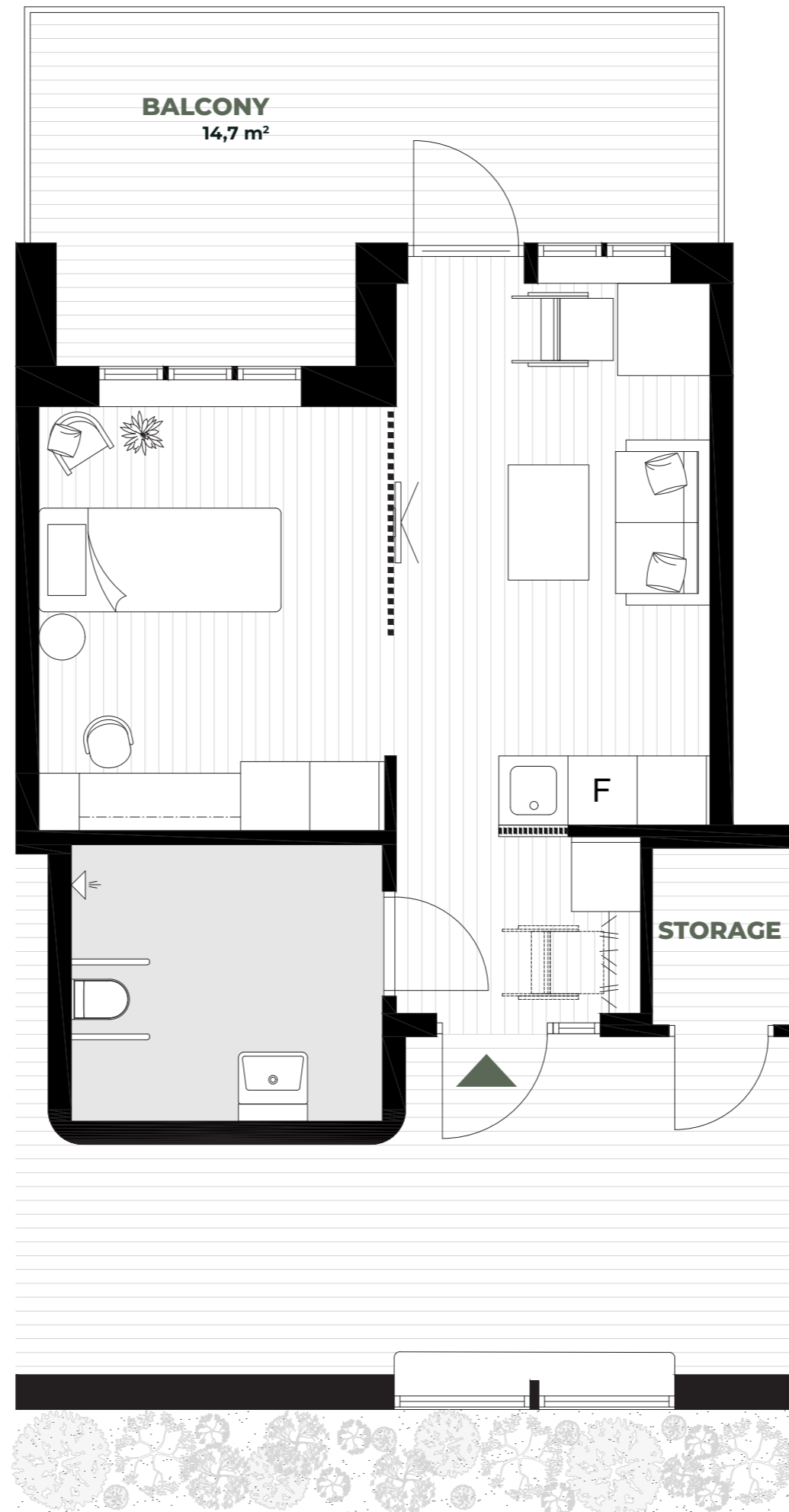


# UNITS - UPPER FLOORS



# APARTMENTS

34,7 m<sup>2</sup>



All apartments are accessed using the corridor connected to the unit's courtyard which facilitates having a light and open passage to the resident's home. The concept of each apartment is to have a feeling of a classical interior, meaning a small entrance hall and a semi closed off bedroom. Having a room divider enables the resident to have a certain level of privacy for the bedroom while maintaining a close connection to the rest of the apartment in case the resident is bedridden. Furthermore, the goal of creating a soft in and outdoor is realised by the windows and big balcony. Additionally to this, all balconies face to the outside, meaning they view the nature and the neighbourhood around the facility. Lastly, all balconies accommodate moveable thin wooden panels which creates another layer of soft transition and privacy.





DESK IN BEDROOM



NISCH BETWEEN APARTMENTS



LIVING ROOM

# DEMENTIA VILLAGE

## THE PROJECT IN NUMBERS

SITE: 22 462 m<sup>2</sup>

GROSS FLOOR AREA: 13 185 m<sup>2</sup>

BUILDING AREA: 6 500 m<sup>2</sup>

GARDENS: 2 265 m<sup>2</sup>

COURTYARD: 183 m<sup>2</sup>/EACH

NUMBER OF UNITS: 10

APARTMENTS PER UNIT: 9

LIVING AREA APARTMENT: 34,7 m<sup>2</sup>

TOTAL AMOUNT OF APARTMENTS: 90

GROUNDMASS CHANGE: + 233 m<sup>3</sup>