

HOUSE OF GENERATION

- A home with care and support for elderly people with special needs. In the interaction with younger generations a welcoming community is open for everyone.



CONTEXT

The assignment is to design an assisted living facility for elderly people with dementia; a dementia village. The client for the project is the private care provider Bräcke diakoni and the site is located on their premises in Bräcke. Bräcke is a residential area located on Hisingen, in the northwest part of Gothenburg. The site is situated in a beautiful, hilly landscape with several different healthcare facilities.

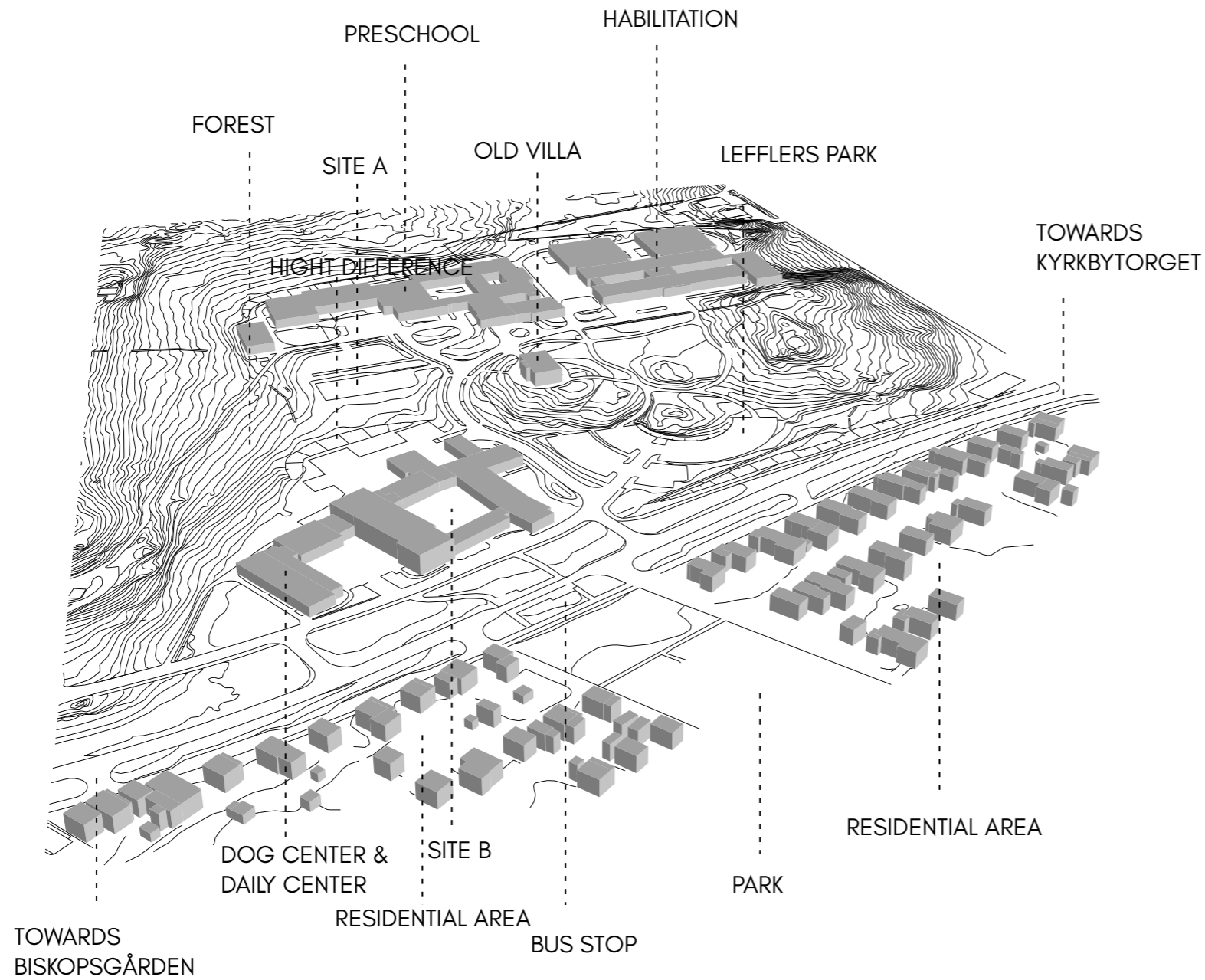
Two different sites are provided in the area. One with close connection to the main street and communications and one is located further up in the hilly landscape. This proposal will be situated on the upper site, due to its closeness to the nature and an already existing preschool.

DEMENTIA VILLAGE

Our ambition is to create a village that offers different experiences in a safe environment that can enhance the residents own abilities to live an independent life. The village offers activities and public functions together with residential parts, allowing the residents to live a meaningful and active life. The design of the village is adapted to elderly with dementia, allowing them to take part in the society in a manageable environment, regardless of their dementia diagnoses.

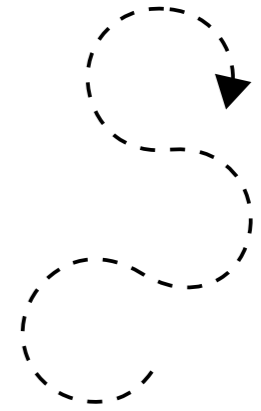
The main focus for this proposal is to create a social sustainable environment, where an existing preschool will take part of the village. To meet and interact between the generations will create meaning for the elderly, providing them a social context.

SITE ANALYSE



DESIGN CONCEPTS

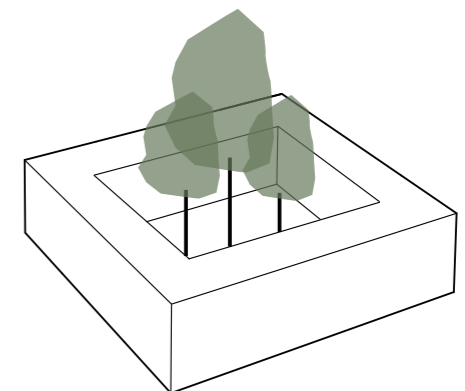
It is important for elderly with dementia to be able to move around freely in a safe environment where they can find their way home. The aim is therefore to create a movement within the building without dead ends.

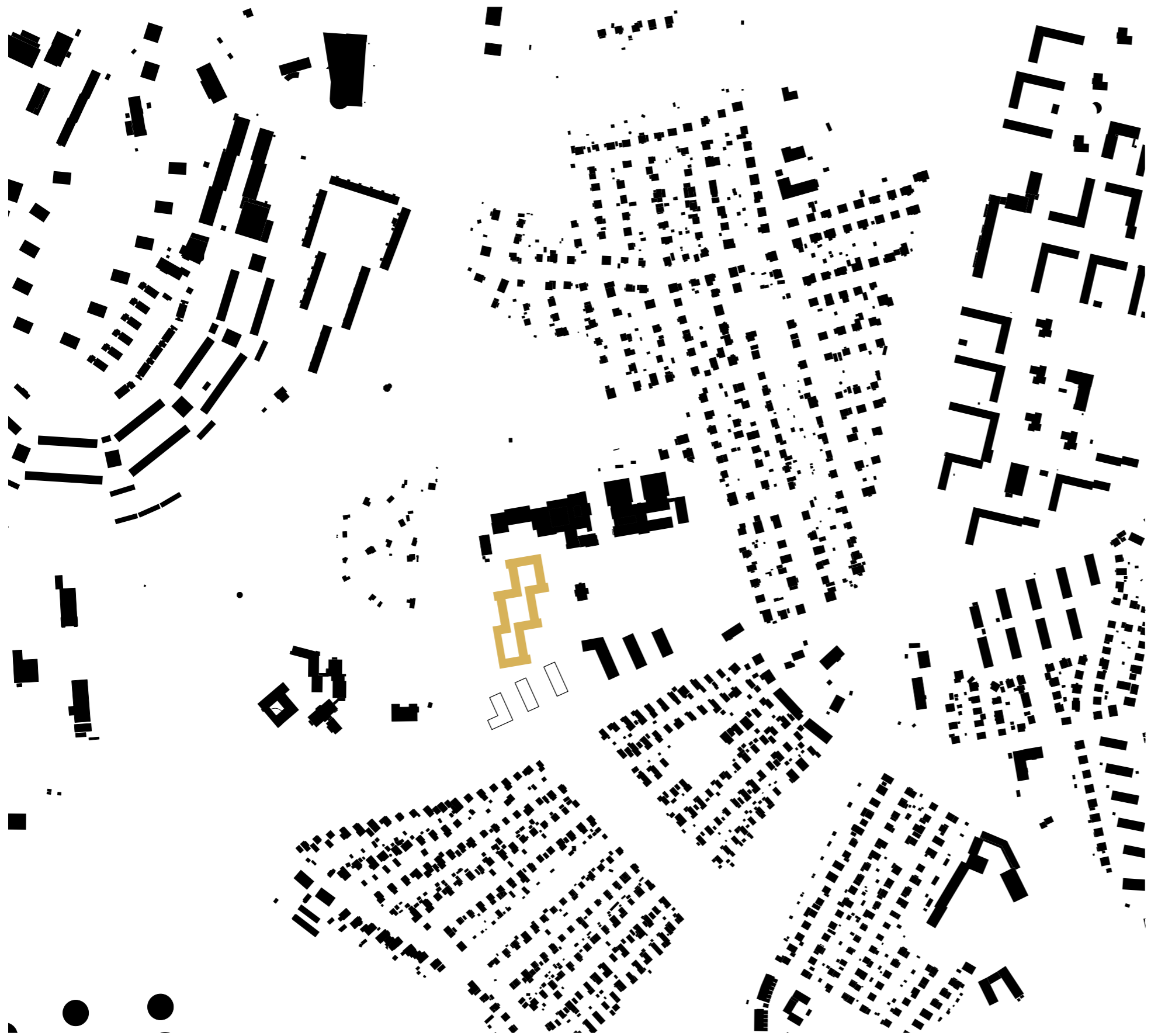


To create community and liveliness within the village, the aim is to create spaces for everyday meetings between generations. The aim is to integrate the existing preschool in the design in order to make the interaction possible.



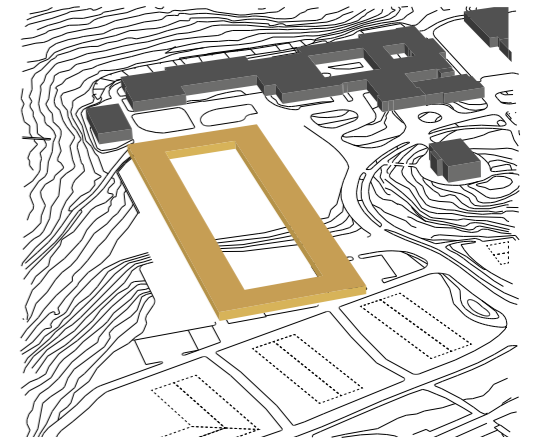
The aim is to let the volume create a natural border that provides a safe space for the residents. The aim is also to use the volume to create outdoor spaces with different characters to provide different experiences.



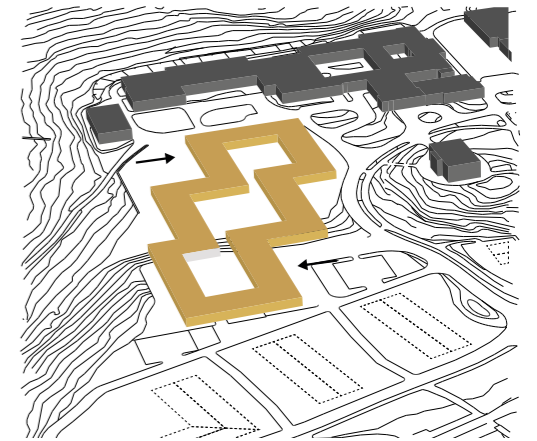


BUILDING STRUCTURE 1:5000 (A3)

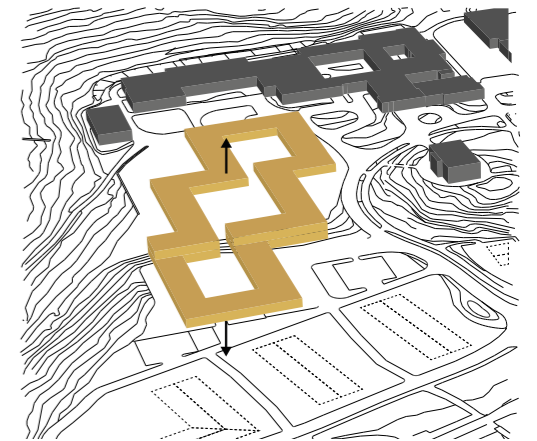
1
To create a safe space for the elderly, the volume forms a natural border towards the surrounding environment.



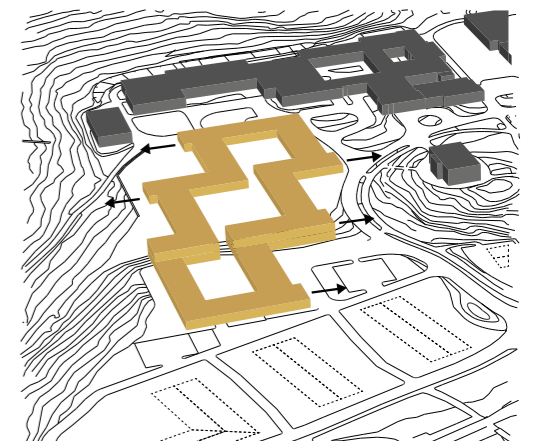
2
By pushing the volume in two directions it follows the line of the terrain and forest.



3
The volume adapts to the height difference on the site, creating courtyards in two different levels.



4
Pushing out the gables creates character to the volume and relates to the built surrounding.





PRESCHOOL

+27.5

+27.5

+23

BRÄCKE ÖSTERGÅRSGATA

LEFFLERS PARK

ELLEN HANSSONS VÄG

STUDENT HOUSING

EDVARD RODHES VÄG

VÄSTRA BRÄCKEVÄGEN

+39

+21.5

+39

+23

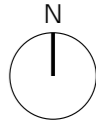
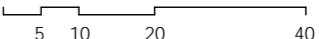
+42.3

+27.5

+32.7

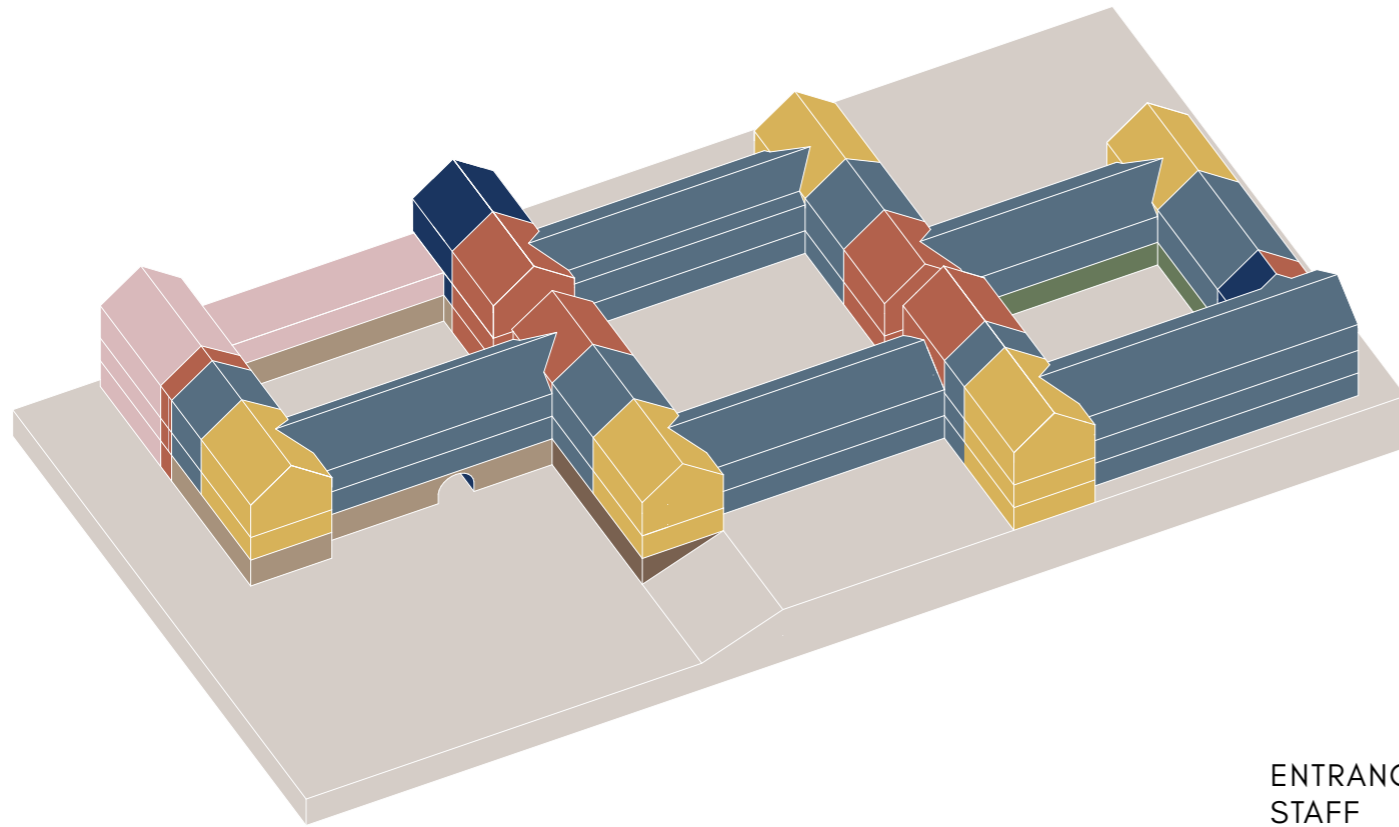
+29.0

SITE PLAN 1:1000 (A3)





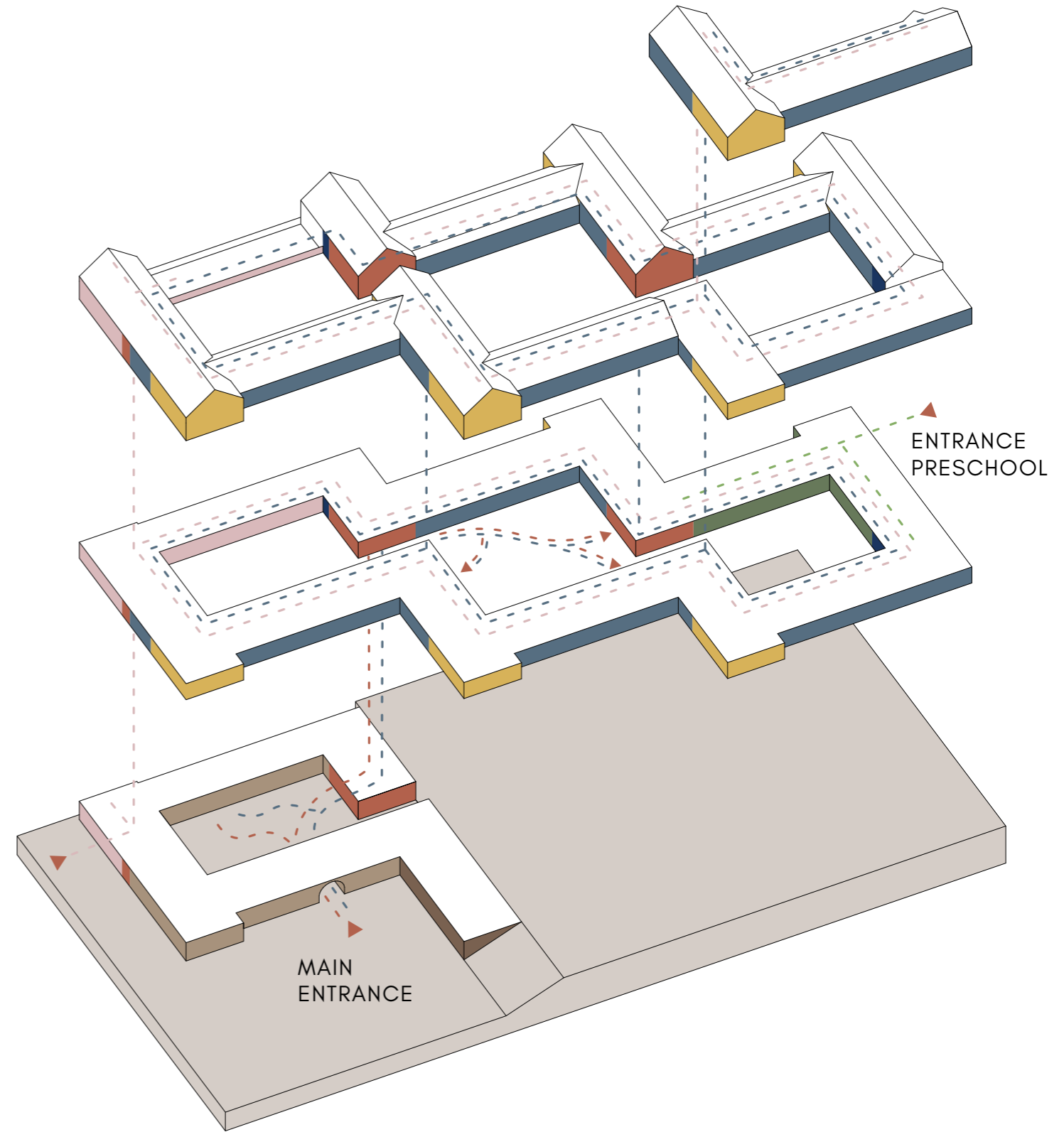
Exterior perspective - entrance to the building



- 5 600 m² ■ Apartments
- 1 060 m² ■ Common areas, units
- 580 m² ■ Staff area
- 560 m² ■ Common & public facilities
- 550 m² ■ Support functions
- 670 m² ■ Vertical communication & shared spaces between units
- 210 m² ■ Activities
- 240 m² ■ Preschool

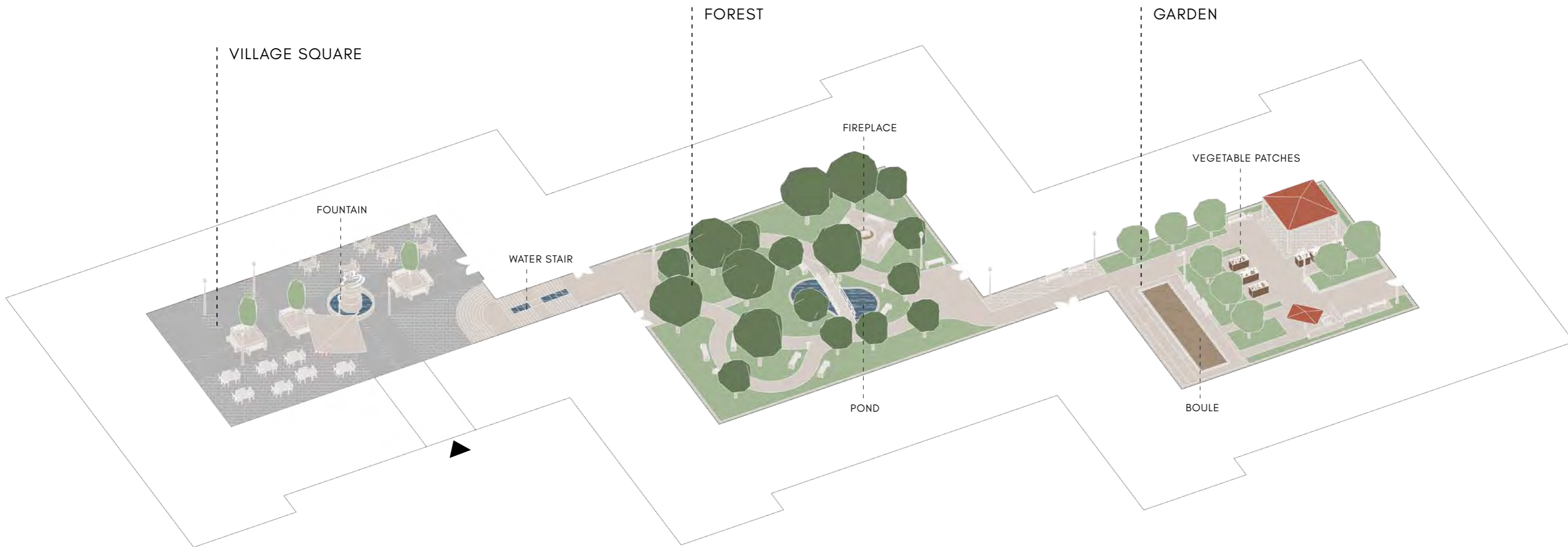
9 470 m² TOTAL AREA

VOLYME PROGRAM



- Residents
- Visitors
- Staff
- Preschool

FLOWS



VILLAGE SQUARE

The village has a public square in direct communication to the main entrance. With the public functions on the square, the whole neighborhood is invited and can take part of the life in the village. A fountain catches the eye as the visitors enter through the arch and a large staircase leads the way to the upper part of the village. On the village square residents and visitors can interact over for an example a glass of wine in the bar or a public performance in the theatre.

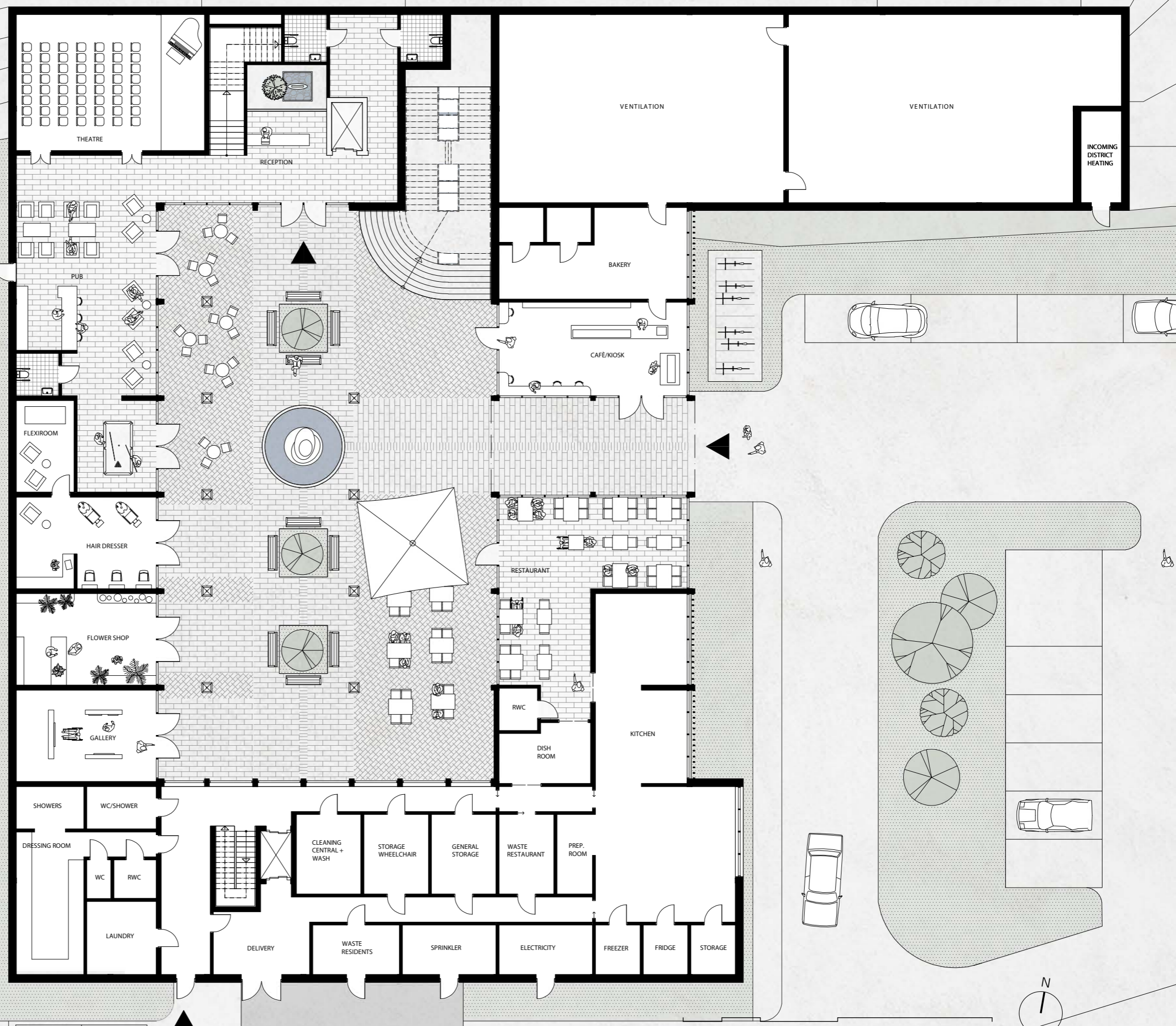
FOREST

One level above the village square, the residents step out on a courtyard with the character of a forest. The trees forms glades around seating areas and the pond creates a calm environment for recreation. All entrances to the units are reached from this courtyard and are placed visibly from the main communication.

GARDEN

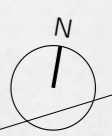
In the garden the residents can pick apples from the apple trees and garden in the vegetable patches. With the courtyard facing the preschool the children are invited to participate in the activities. On the boules court the residents can play together, remaining an active and social lifestyle.

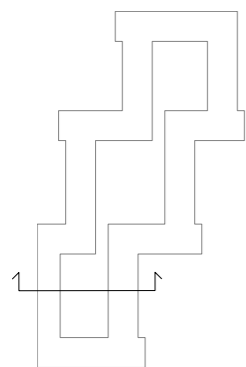
The different characters of the yards helps the residents to orientate through the village.



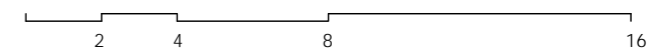
FLOOR PLAN - ENTRANCE & VILLAGE SQUARE 1:200 (A3)

2 4 8 16



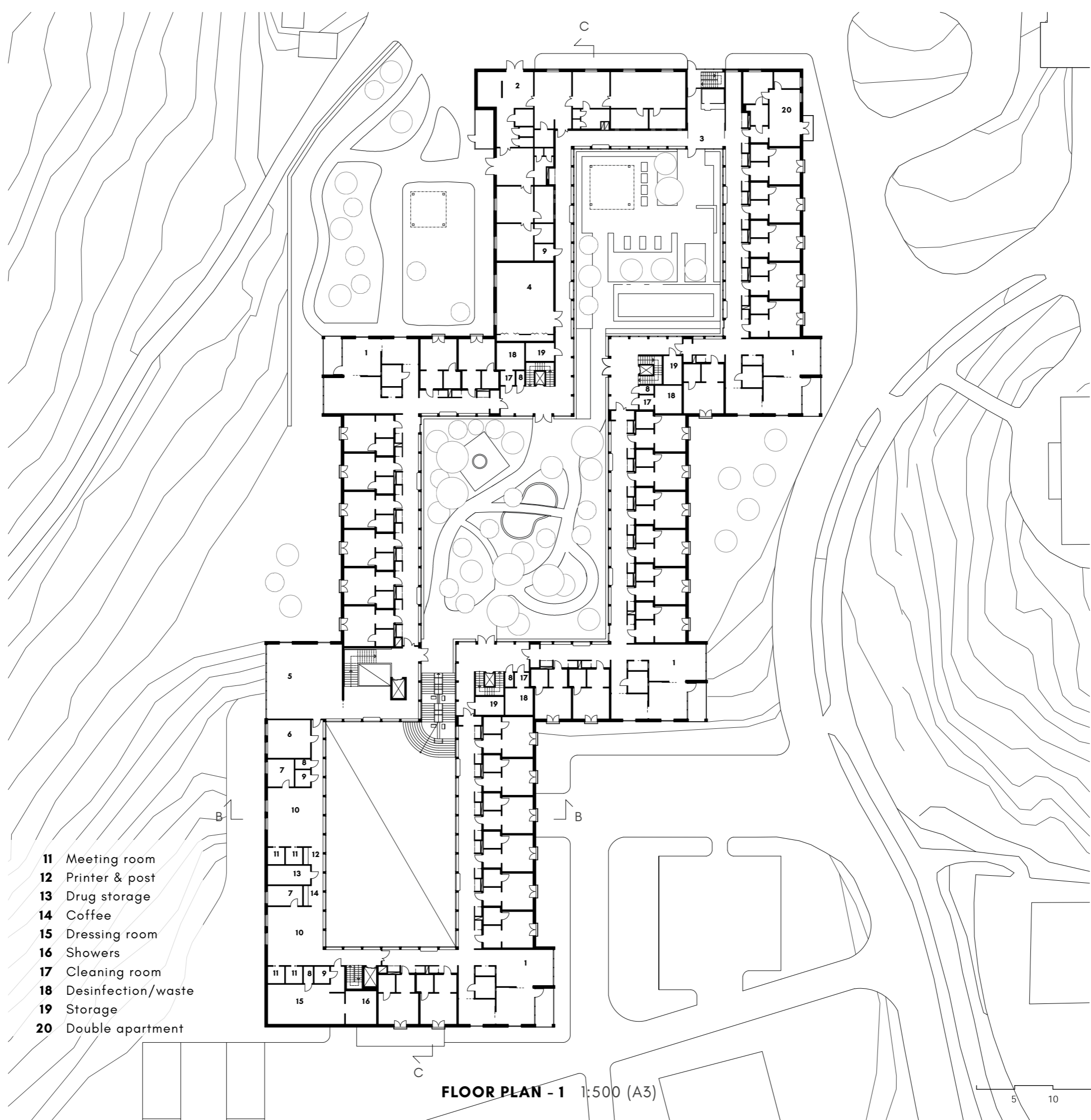


SECTION B-B - ENTRANCE & VILLAGE SQUARE 1:200 (A3)



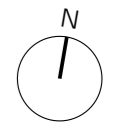


Village square - facing entrance and stairs to the Forest courtyard

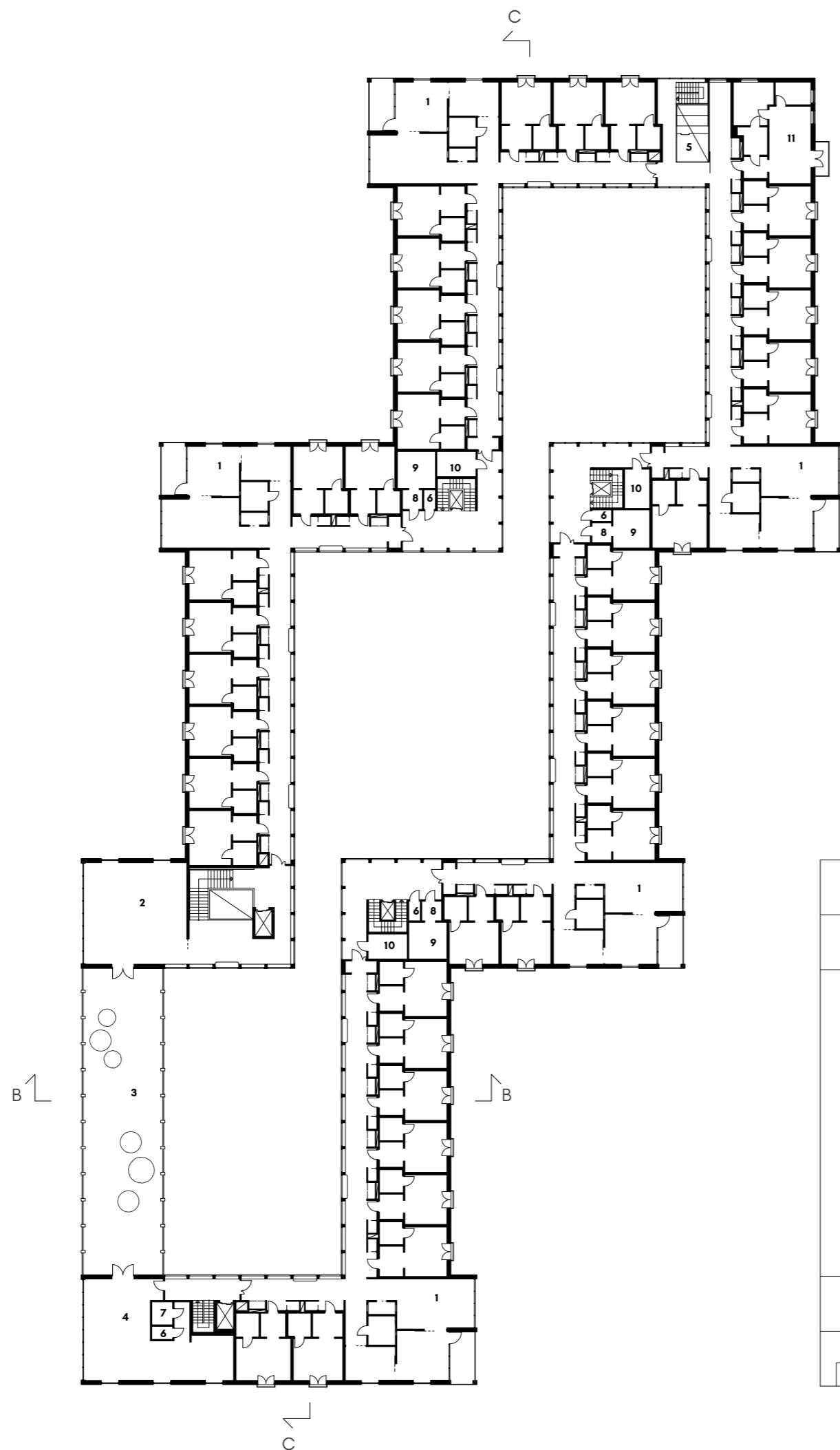


- 01** Units
- 02** Preschool
- 03** Greenhouse
- 04** Activity / sport
- 05** Workshop
- 06** Conference
- 07** Office
- 08** WC
- 09** RWC
- 10** Shared office space
- 11** Meeting room
- 12** Printer & post
- 13** Drug storage
- 14** Coffee
- 15** Dressing room
- 16** Showers
- 17** Cleaning room
- 18** Desinfection/waste
- 19** Storage
- 20** Double apartment

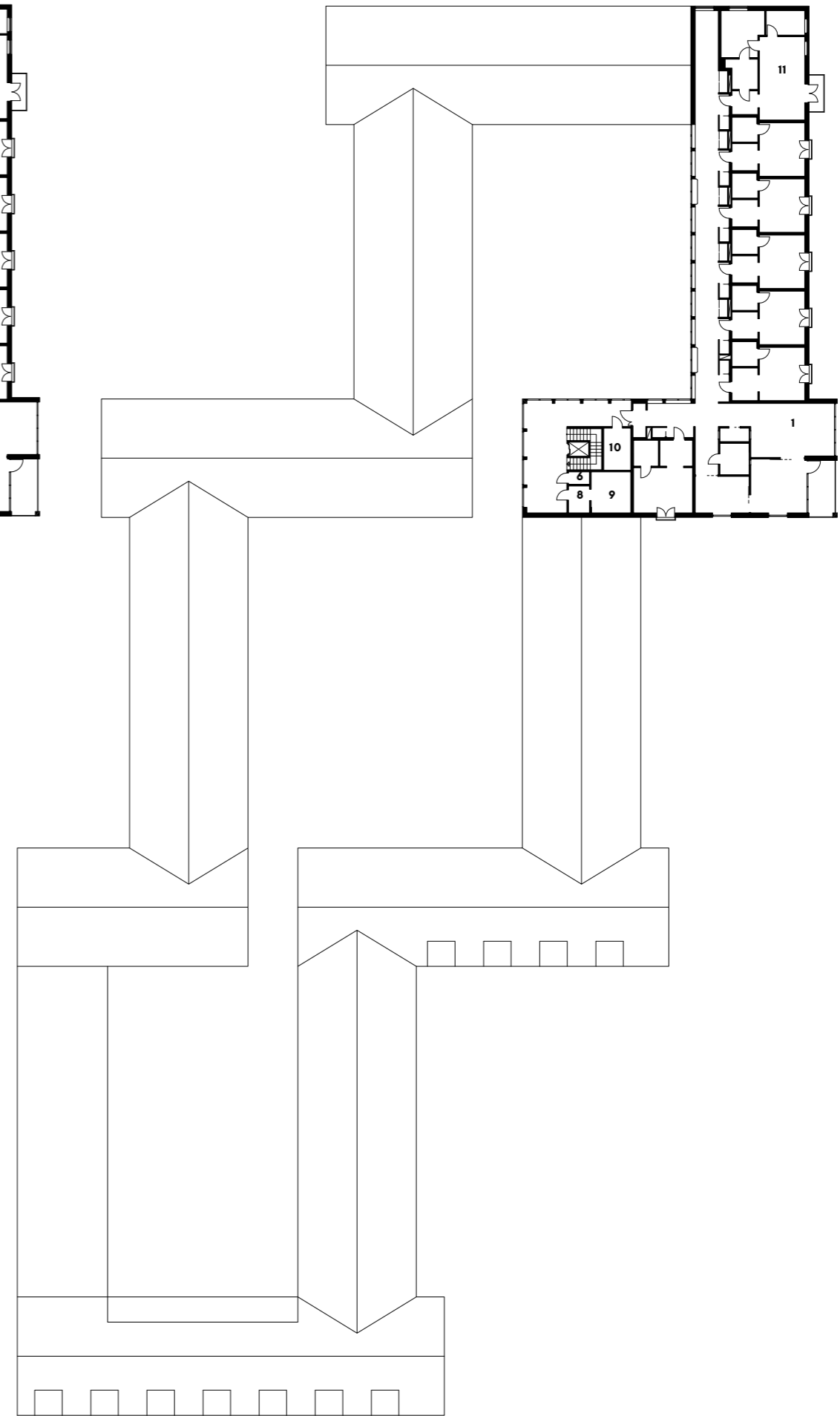
FLOOR PLAN - 1 1:500 (A3)



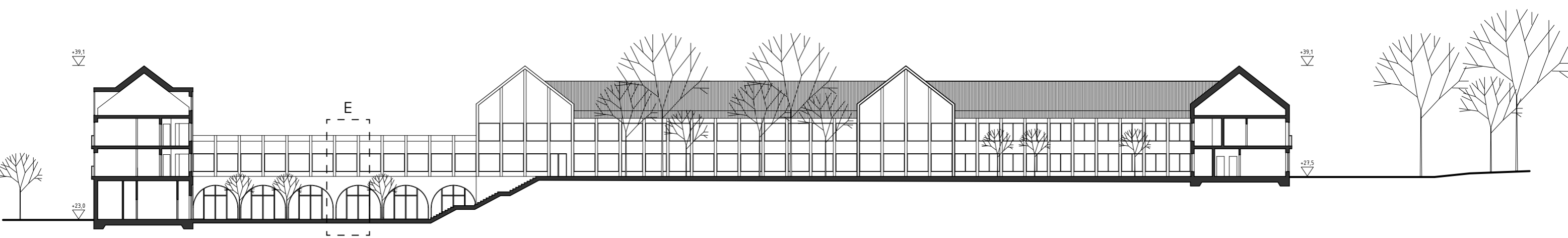
- 01 Units
- 02 Workshop
- 03 Roof terrace
- 04 Staff kitchen
- 05 Greenhouse
- 06 WC
- 07 RWC
- 08 Cleaning room
- 09 Desinfection/waste
- 10 Storage
- 11 Double apartment



FLOOR PLAN - 2 1:500 (A3)



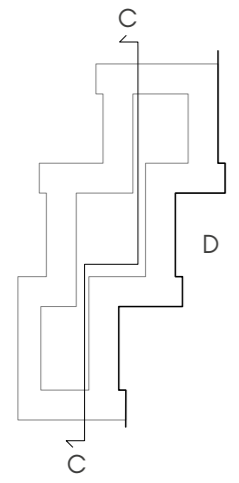
FLOOR PLAN - 3 1:500 (A3)



SECTION C-C 1:400 (A3)

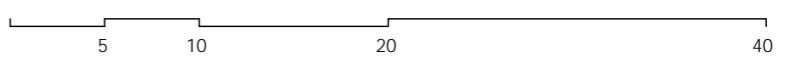


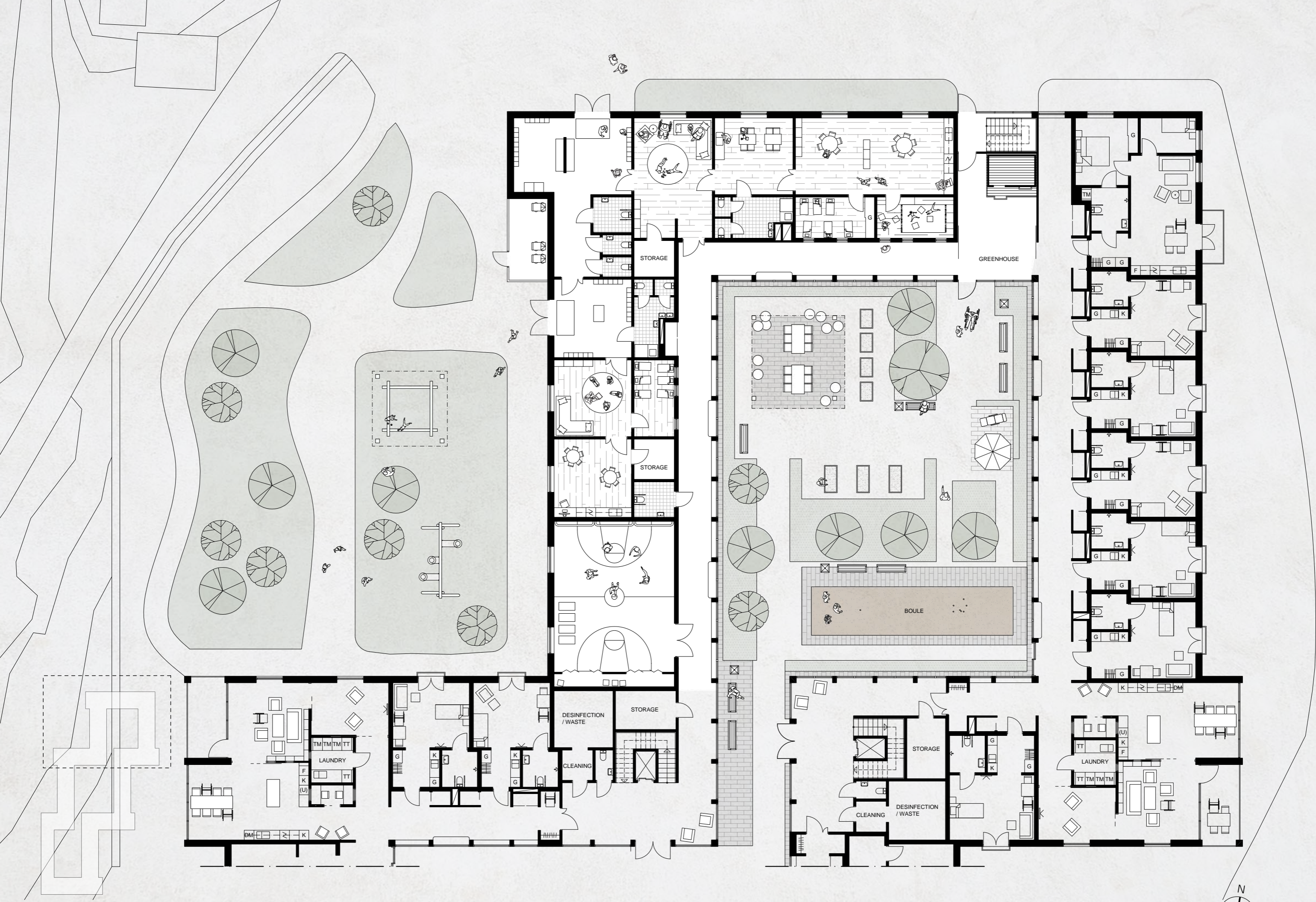
FACADE D 1:400 (A3)



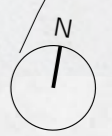
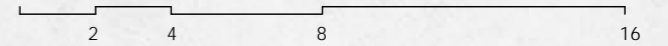
MATERIAL

A black wooden facade cover the exterior of the building, blending it in to the terrain and the many trees. The facades surrounding the courtyards are in a lighter wooden material, creating a softer and a repetitive atmosphere. The gables are in a different color to highlight the common areas in the units.





FLOOR PLAN - PRESCHOOL 1:200 (A3)



All apartments are facing the surrounding, creating light corridors alongside the courtyards. The courtyards are also the first thing the residents see as they step out of their apartments, allowing them to choose for themselves if they want to participate in the community in the common areas.

The common areas of the units are centrally placed in the corner as an extension of the corridors. The space is divided into a kitchen and two separate living rooms.

The rooms are placed in an open connection, with the possibility to close in the need of privacy. A smaller workstation are placed within the unit to ease the documentation for the staff. It is also possible to use one of the livingrooms for conversations with relatives.

To create a shortcut to the yards all units on the first floor have sliding doors in direct communication to the common spaces. These doors are hidden in the facade structure to prevent the residents to wander off.



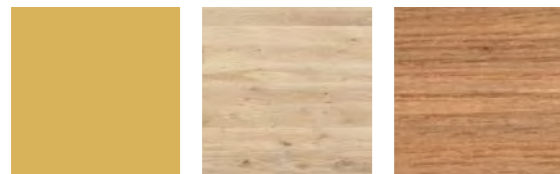
Light corridors around the Forest courtyard



DESIGN CONCEPT

To facilitate the orientation and to put a personal touch, each unit have its own color palette. The colors are chosen to connect it with the elements of nature and to create a feeling of calmness and recognition.

MATERIALS



BRASS

FLOORING

FURNITURE

COLORS

THE WATER



NCS S 5020-R90B

NCS S 6030-R80B

THE FORREST



NCS S 5020-G30Y

NCS S 8010-B70G

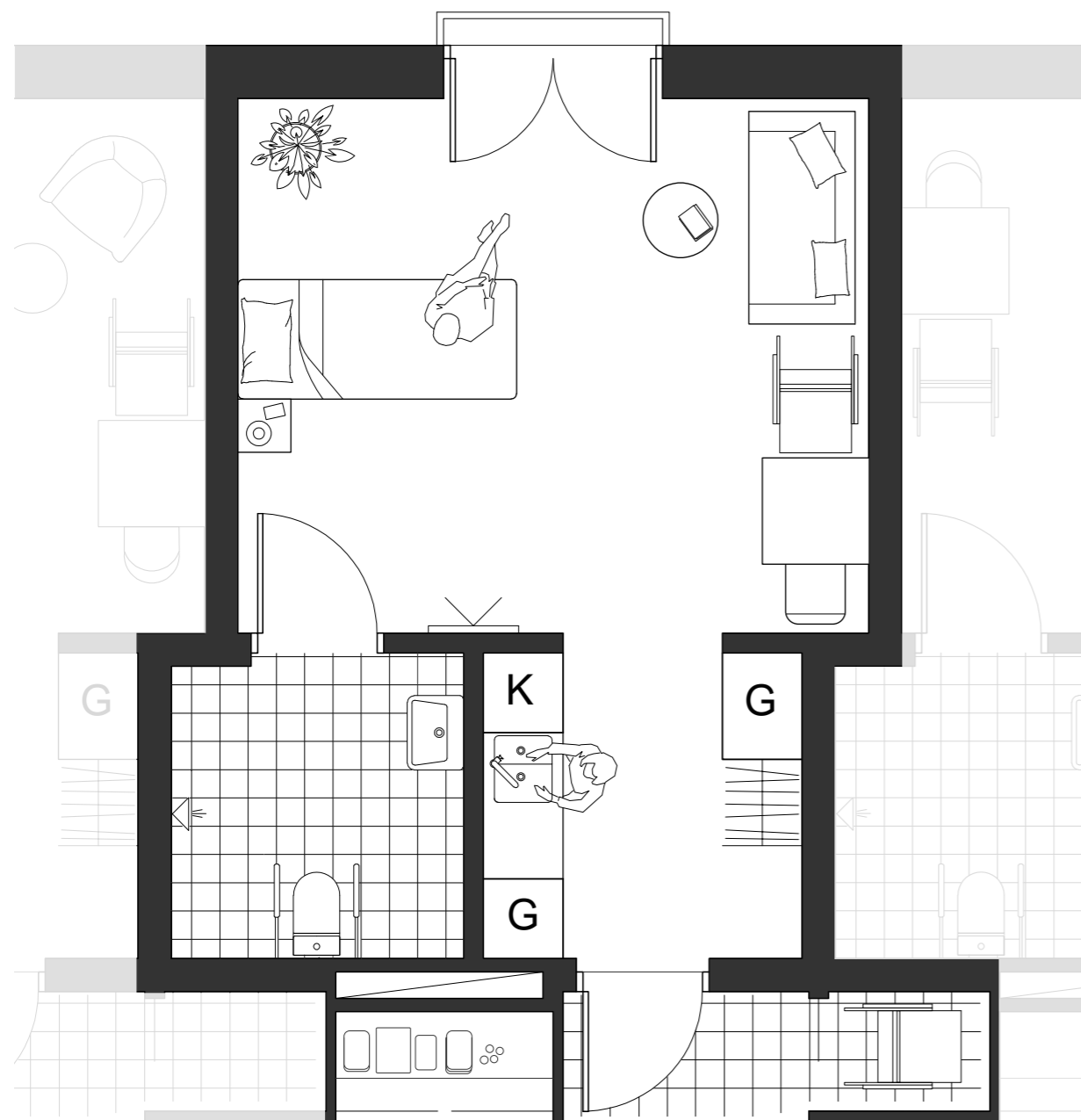
THE SOIL



NCS S 4010-Y30G

NCS S 6010-Y40G

INTERIOR DESIGN CONCEPT



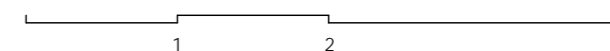
View from the apartment

The apartments are 32 square meters, including a storage space outside the apartment, big enough to contain a wheelchair. There is also some extra space for storage facing the corridor for the staff to use. These storages creates a private entrance space to each apartment, making it feel more like a home. The layout of the apartments are pushed, creating a space for a seating area and it is possible to furnish in different ways.

The apartments have french balconies where the residents can plant their own flowers.

32 m²

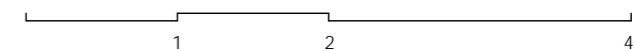
FLOOR PLAN - SINGEL APARTMENT 1:50 (A3)

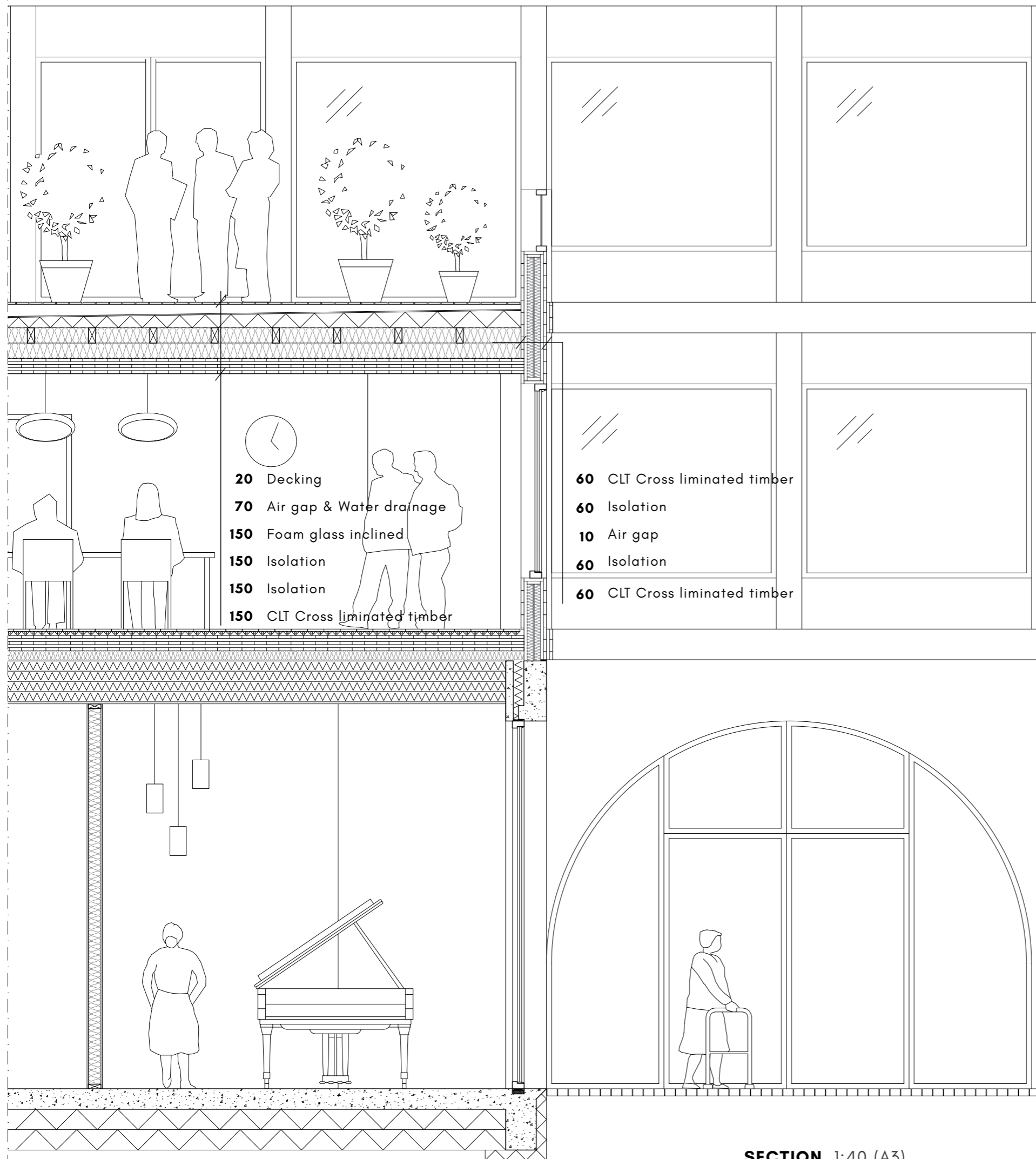




66.5 m²

FLOOR PLAN - DOUBLE APARTMENT 1:50 (A3)

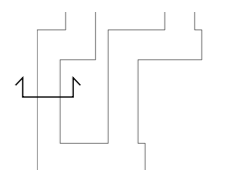


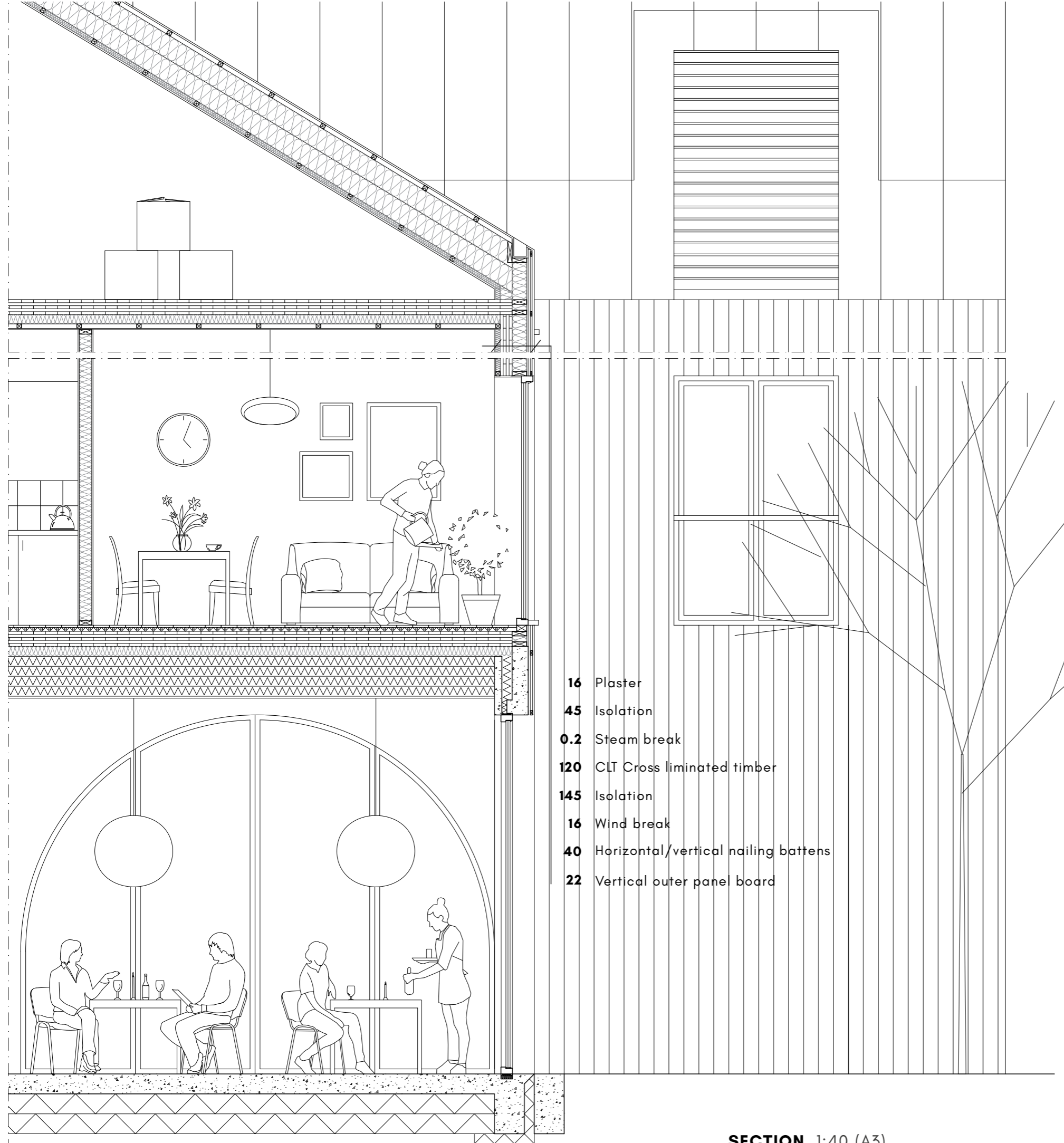


SECTION 1:40 (A3)



INSIDE FACADE - E 1:40 (A3)





- 16 Plaster
- 45 Isolation
- 0.2 Steam break
- 120 CLT Cross liminated timber
- 145 Isolation
- 16 Wind break
- 40 Horizontal/vertical nailing battens
- 22 Vertical outer panel board

SECTION 1:40 (A3)



OUTSIDE FACADE - F 1:40 (A3)

