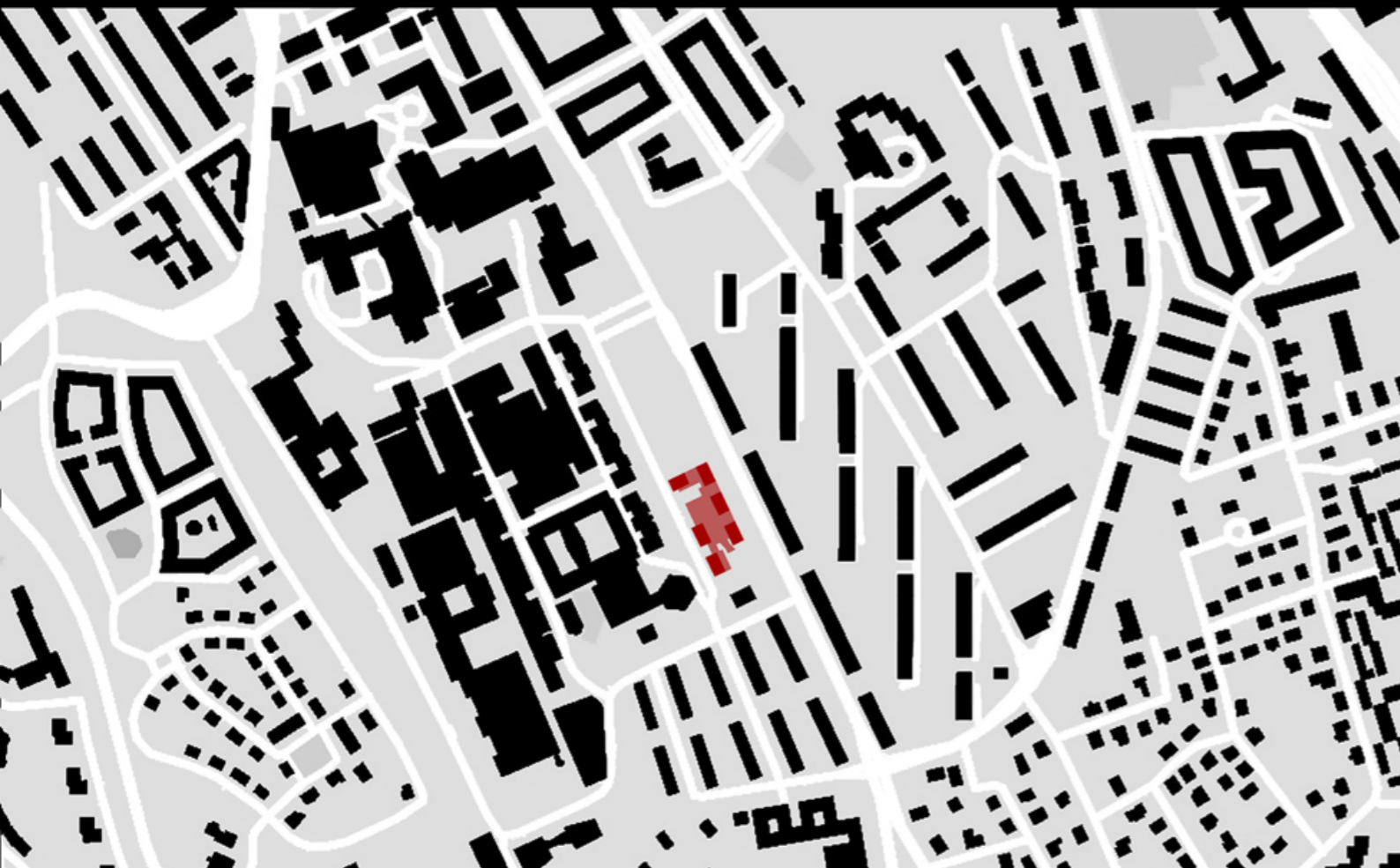


Future Visions for Healthcare, Housing & Work: Residential Healthcare – Housing for seniors

CHALMERS, ARCHITECTURE, MASTER PROGRAM AUT163, YANG YANG, 12/2015





Intro:
 Area: 6741.77 sqm
 (Ground Floor :2078.77sqm ; hotel and guests rooms are not include)
 Stories: 4floors to 8 floors
 Apartments: 50
 (25 double people apartments ,76.66 sqm in each, 25 single people apartments,59.50sqm in each)

The program locates between Chalmers and Gibraltargatan, which is a parking lots at present. Two important buildings, Kopparbunken, Gibraltar Cottage, in this area are situated beside the design site. At same time another two buildings, Chalmers bibliotek and Johannebergskyrkan are nearby the site. How to add a fifty apartments senior housing program at this area is a challenge to me. Especially an original idea tries to make the new project to enhance the experience of time-scale in the area and reflect the architecture of today. After several times site visits, some background studies and some concept sketch, I decided to arrange six units (five flat buildings, one hotel and guest rooms building) which are based on a common space by two rows along the Gibraltargatan. This kind of arrangement aims to make the new building similar forms and space with existing surroundings through its layout and volume. Meanwhile it also creates diverse common area to publics and residents seperately and keeps most of trees along Gibraltargatan and sights from surroundings. These building blocks enclose a courtyard in the middle as well as a platform. Two small parks are arranged at both sides of the site and they are next to roads. They not only provide common space to public, but also make the space of streets to be more diverse. In terms of the platform (on the entrance floor's roof), it is a relatively independent outdoor space for residents. There are several outdoor activities are available on the platform, for instance, doing some physical exercises, playing games, enjoying sunshine bath, socializing, planting vegetations, holding outdoor parties, and so on. In addition, apartments units has different stories and display different colors , which make each unit gains its own identity and to be unique, it may help senior people easy to find a way back home.

Gibraltargatan





Design Site



Kopparbunken

Chalmers Bibliotek

Johannebergskyrkan

Gibraltar Cottage

- Important Buildings
- Node Greening (Node of city view)
- Group Greening (Between residential buildings)
- Greening Along the Gibraltar-gatan



The row of trees on the west side of Gibraltar-gatan creates beautiful and unique scenery

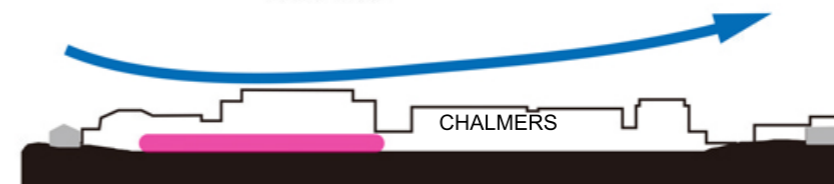


Major Roads Minor Roads Chalmers Housing

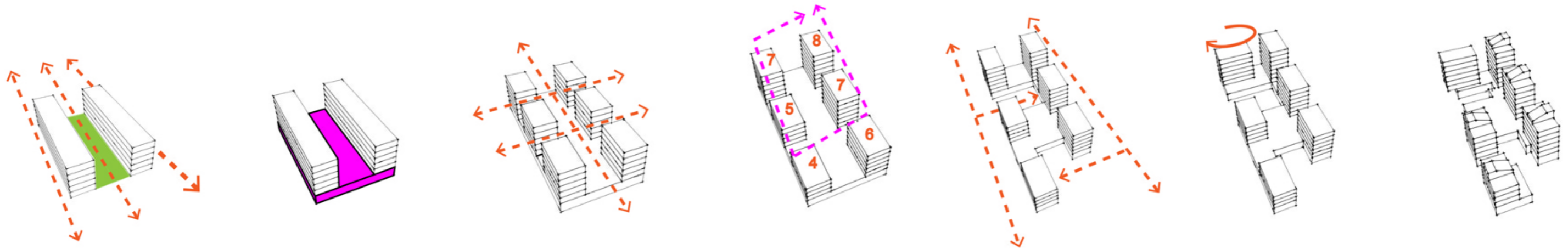
Space analysis:
Most of the buildings locate along Gibraltar-gatan and face the street by long facade, at the same time buildings and greening enclose this area and compose a kind of linear space at Gibraltar-gatan as well as a central axis between Gibraltar Cottage and Chalmers Bibliotek.



- Characteristics:
1. Short at north-south direction
Long at east-west direction
 2. West and south are close to building
East and north are relatively much more farther



Linear space of Gibraltar-gatan
Central Axis of the site



Blocks Developing Analysis

1. Imitating existing flat blocks and buildings in this area to arrange two row buildings along Gibraltargatan, and make the long facade facing to the street. Remaining the existing trees and the axis of space between Chalmers Bibliotek and Gibraltar Cottage.

2. Adding common space under apartments as a base. It features common space access conveniently to both residents and public, and composes a relatively private outdoor space on the roof of common space for elderly people.

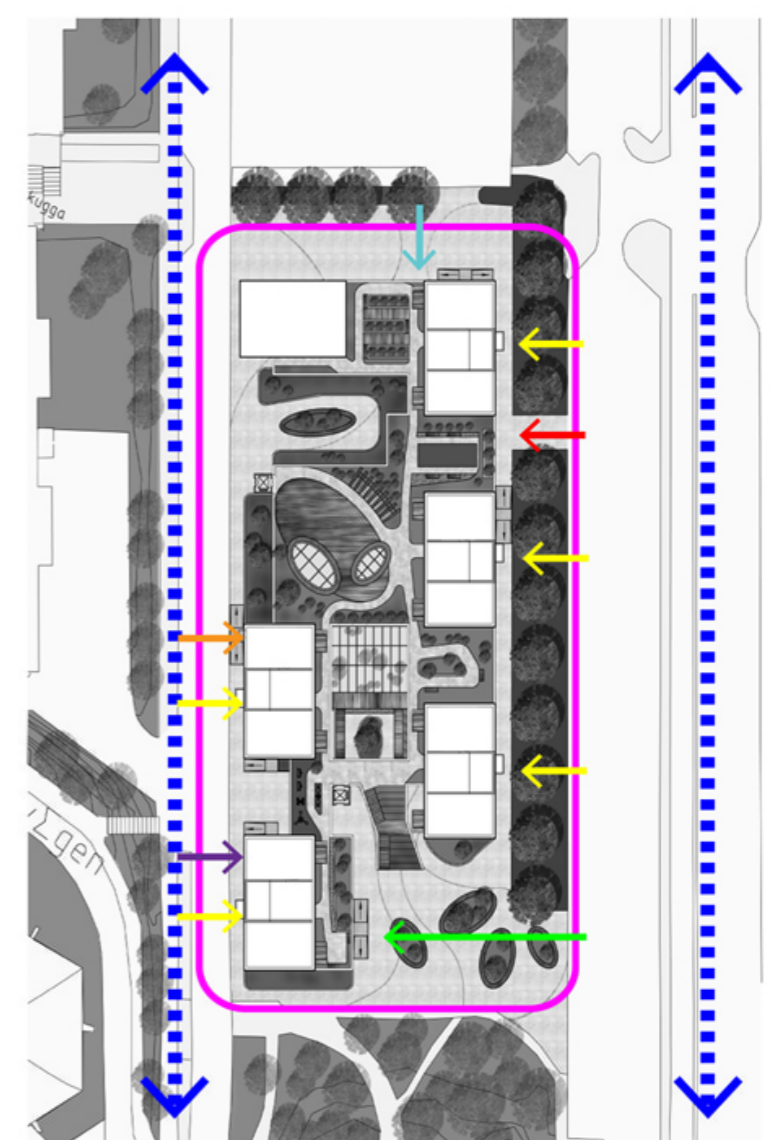
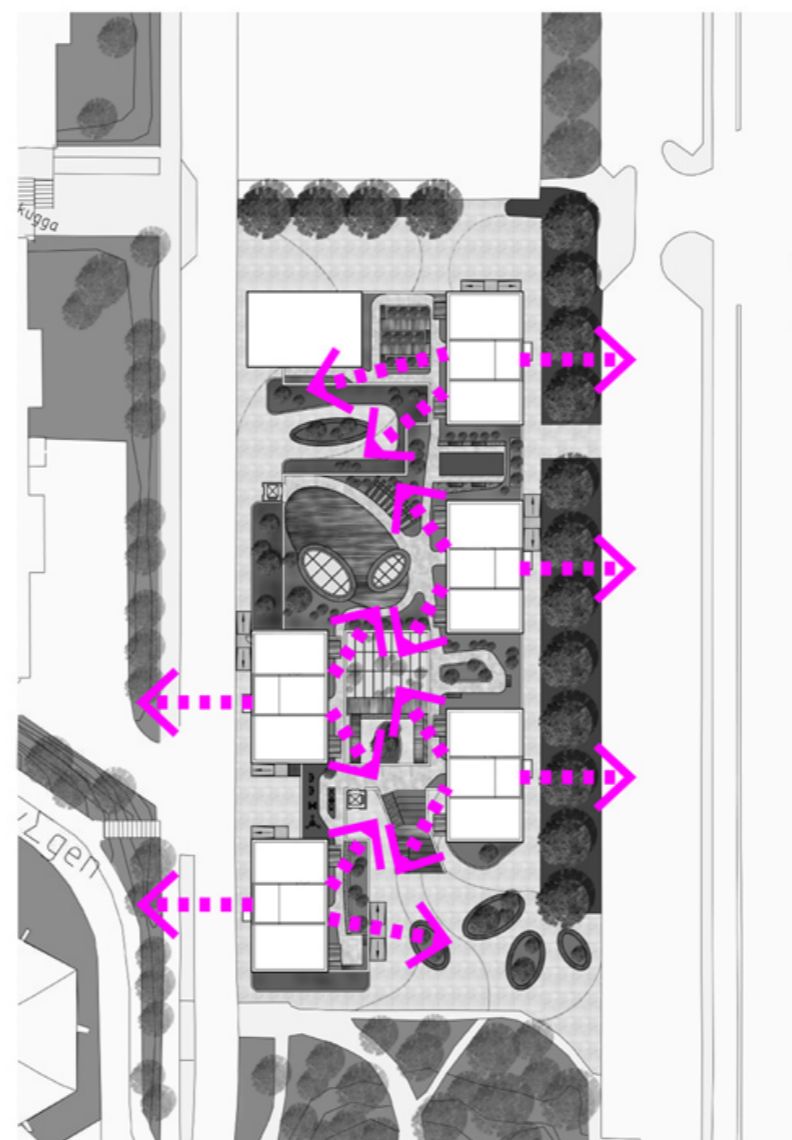
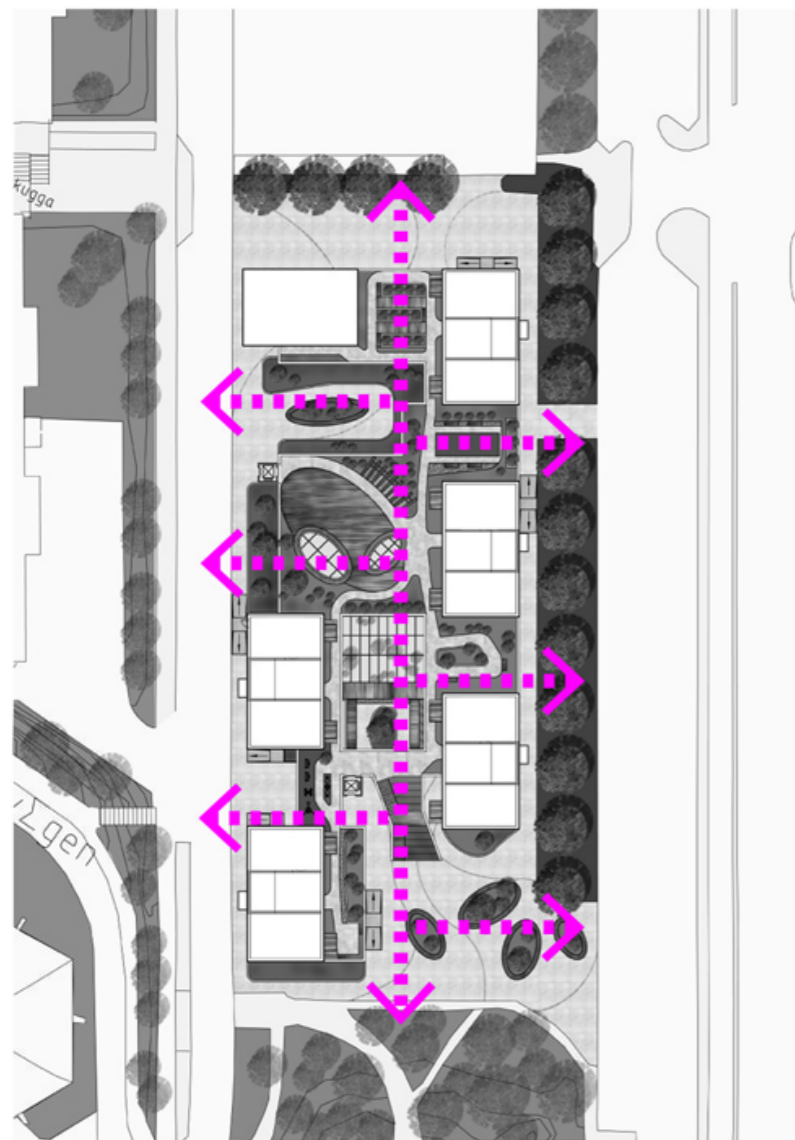
3. To separate the long cube into six units. It enables vision available at perpendicular direction of Gibraltargatan.

4. According to the site distance with surroundings to decline or increase the height of each units, if it is much more close to surroundings, its height is more lower and vice versa. It aims to avoid impact, especially the sun shine, between existing buildings and the project.

5. Cutting common space block at long sides, so that it has two separate public area at ground floor, the new public areas compose perpendicular relationship with two streets and enrich existing street space.

6. Distinguishing the block of hotel and guest rooms by rotating it, and coordinate common spatial scale accordingly.

7. Getting the whole volum into details.



Platform Sight

Apartment Sight

Site Analysis

- Apartments Entrance
- Restaurant Entrance
- Kitchen Entrance
- Automobile Route
- Public Entrance
- Staff Entrance
- Recycling Entrance
- Walking Route

Traffic Analysis



Ground Floor Landscape

Platform Landscape



Greening Axis






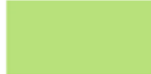

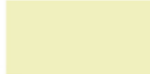



Greening Nodes

- Ground Floor (relatively more public for all people):
1. Small square: with benches and parterres. A connection for restaurant and Gibraltar garden.
 2. Courtyard: with a small pond, greening on wall and parterre. A transitional space between outdoor space and greenhouse.
 3. Small courtyard: with benches and parterres. Providing a space to stay for public.
- Platform (relatively more private for residents):
4. Parterres: with benches and vegetations. Outdoor greening space for residents.
 5. Mini golf: An outdoor game for residents.
 6. Small square: with benches and parterres. For residents, even parties or barbecue.
 7. Parterres: with benches and vegetations. Outdoor greening space for residents.
 8. A small sport spot: With some simple outdoor fitness equipments for elderly residents.
 9. Parterres: with benches and vegetations. Outdoor greening space for residents.

Outdoor common space consist nice scenery among the building blocks and create diversity opportunities to people for various activities. More importantly the separate outdoor space (on the platform or on the ground) also provide senior residents different options according to their personal hobbies, which like outlanders or not.



	TRAFFIC AREA		STAFF		PUBLIC SERVICE		STORAGE		SWIMMING&SAUNA &MASSAGE
	RESIDENTS COMMON SPACE		RESTURANT& KITCHEN		TOILET		RECYCLING		

1. Resturant and swimming pool & sauna & massage area are available for publics, so they all have independent entrance.
2. Greenhouse, Activity Room and Small Library consist indoor common space to senior residents only. activity room is kind of flexible, it can be changed to dining room party room, dancing room... according to different demands.
3. Staff area has its own restroom, meeting room and dressing room. These areas may keep private and enable staffs support senior residents' life better.
4. All most each apartment unit has its own storage on the ground floor, which is next to every apartment entrance.
5. Stores and dispensary make senior residents' life to be more convenient.



1: 250



FIRST FLOOR

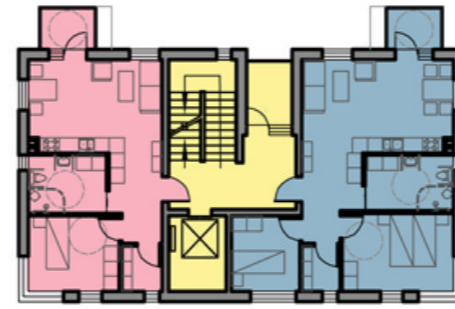


SECOND FLOOR









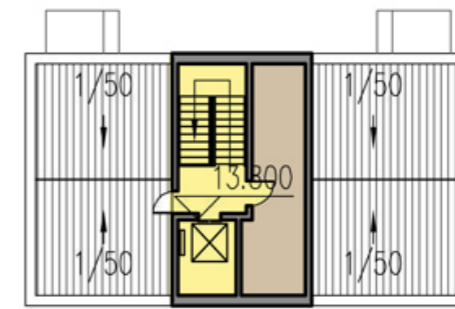
THIRD FLOOR



FORTH FLOOR

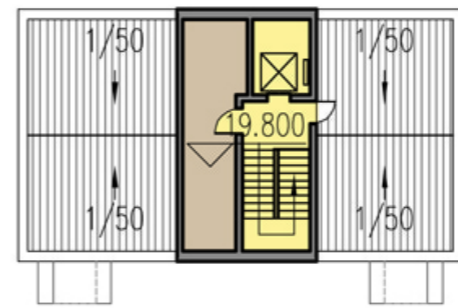
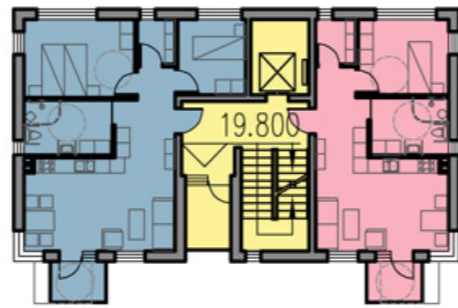
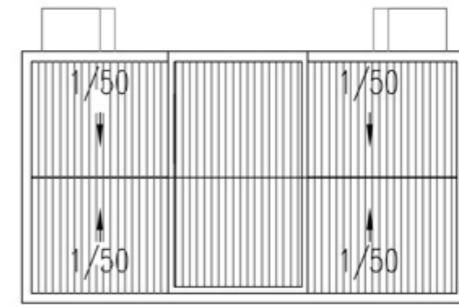
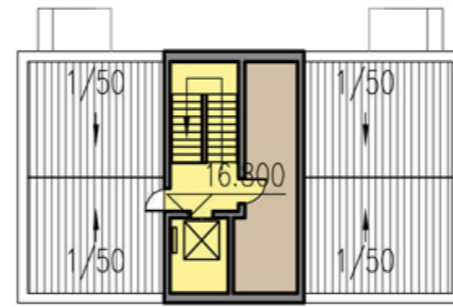


-  TRAFFIC
-  TWO PEOPLE APARTMENT
-  SINGLE PEOPLE APARTMENT
-  VENTILATION EQUIPMENTS





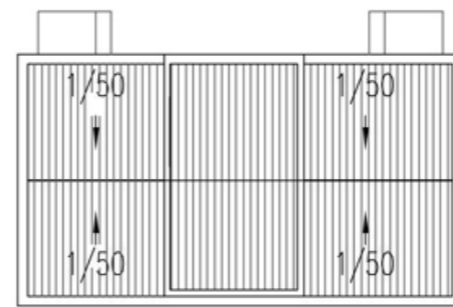
FIFTH FLOOR



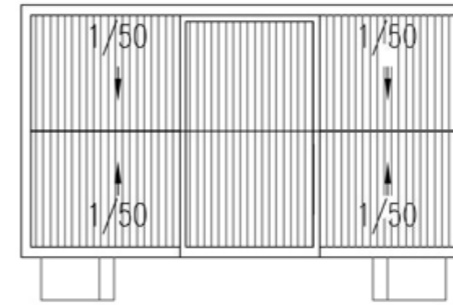
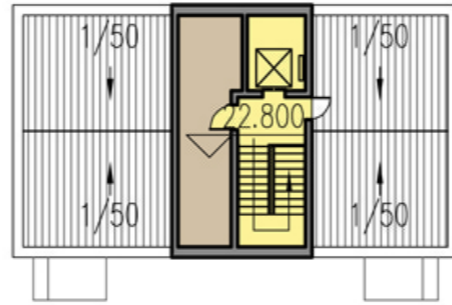
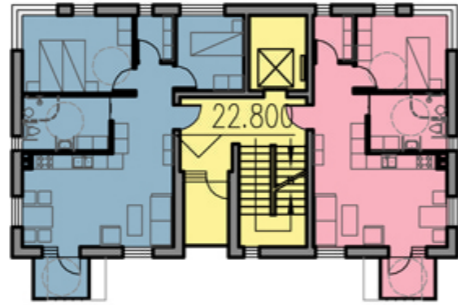
SIXTH FLOOR



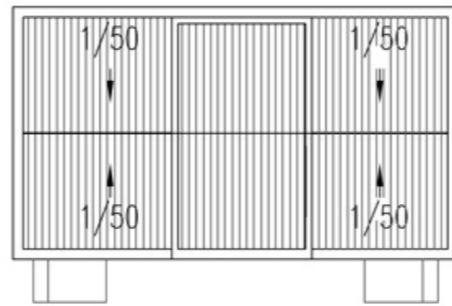
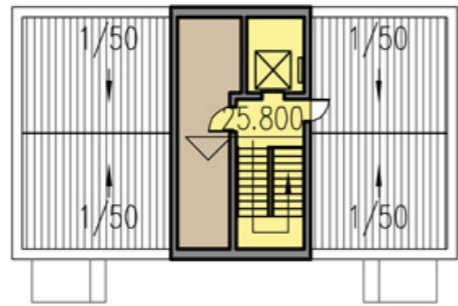
- TRAFFIC
- TWO PEOPLE APARTMENT
- SINGLE PEOPLE APARTMENT
- VENTILATION EQUIPMENTS



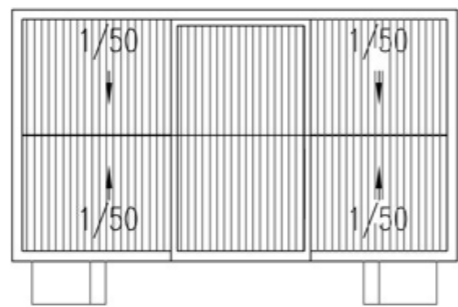
1: 300



SEVENTH FLOOR



25.80m FLOOR

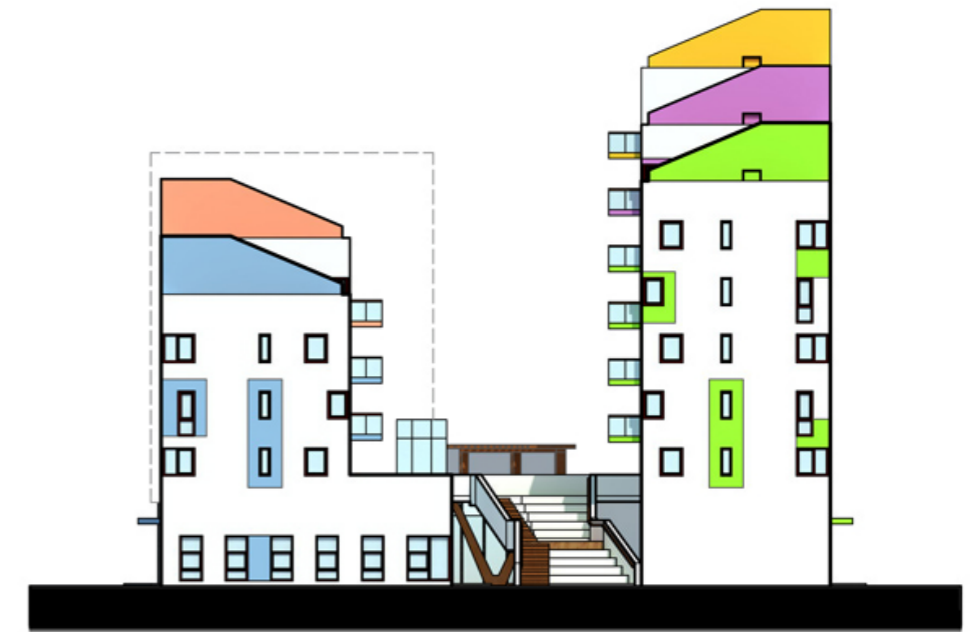


30.00m ROOF

- TRAFFIC
- TWO PEOPLE APARTMENT
- SINGLE PEOPLE APARTMENT
- VENTILATION EQUIPMENTS



WEST ELEVATION



SOUTH ELEVATION



NORTH ELEVATION



EAST ELEVATION



1-1 SECTION



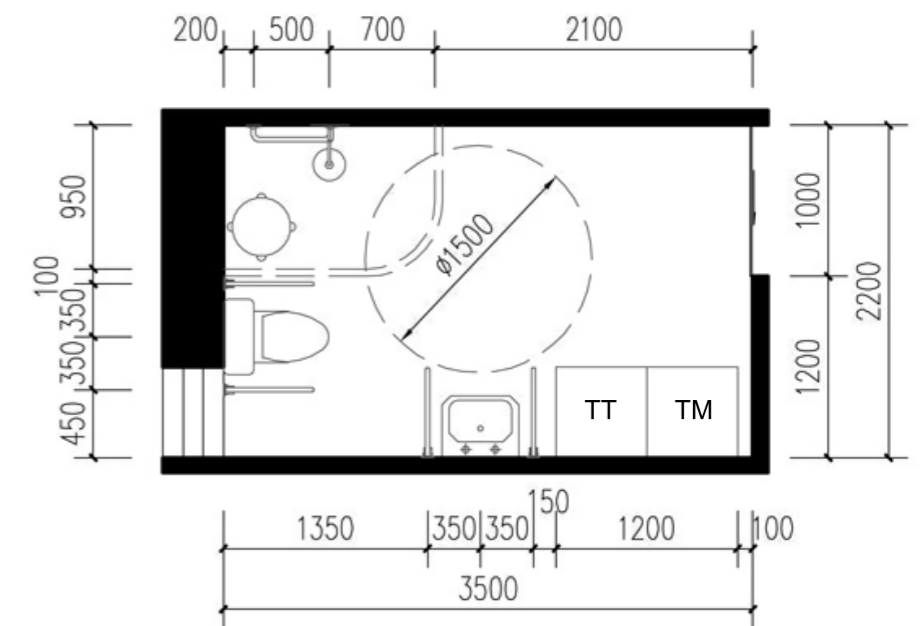
2-2 SECTION

- RESIDENTS COMMON SPACE
- TRAFFIC AREA
- STAFF
- TOILET
- SWIMMING&SAUNA &MASSAGE

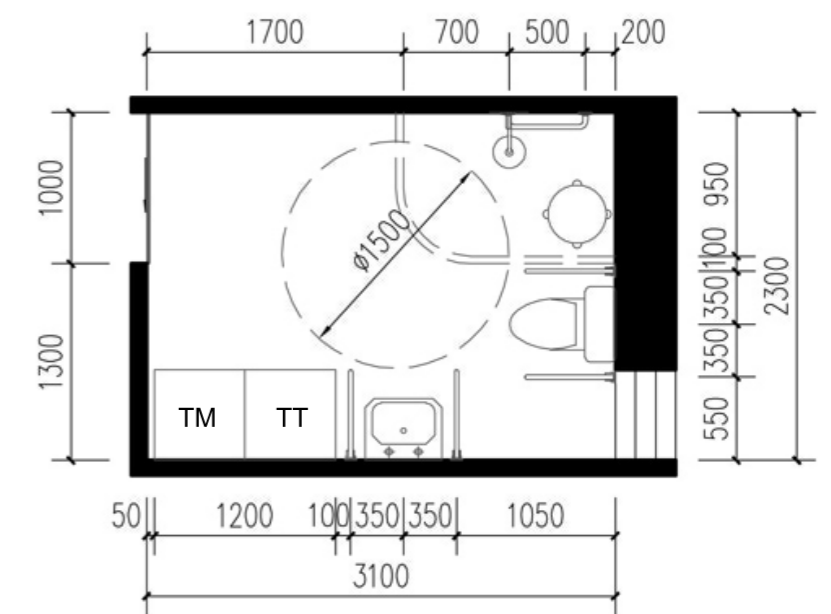
1: 300



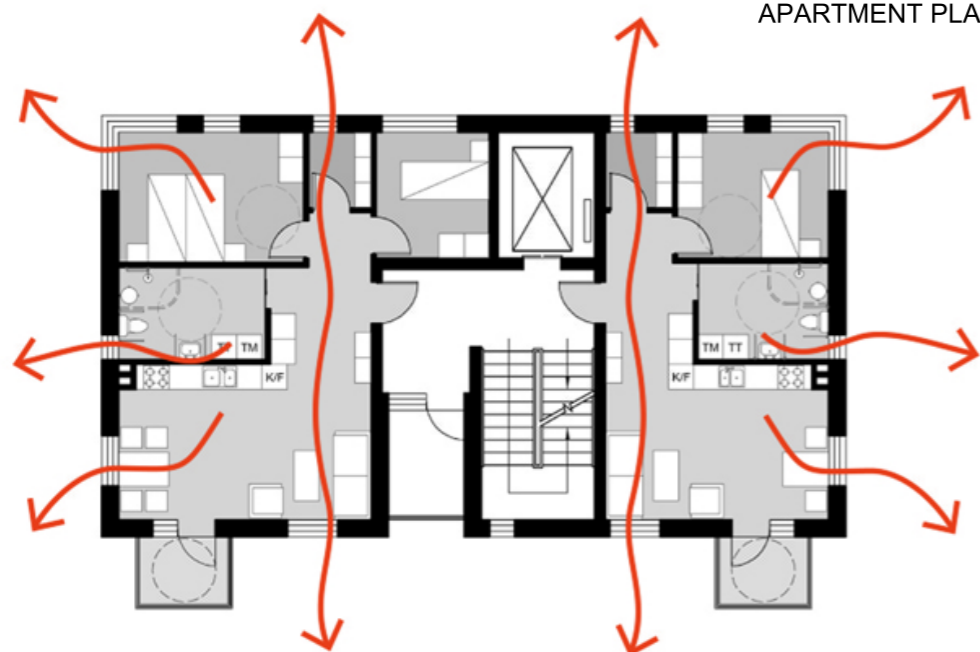
APARTMENT PLAN 1:100



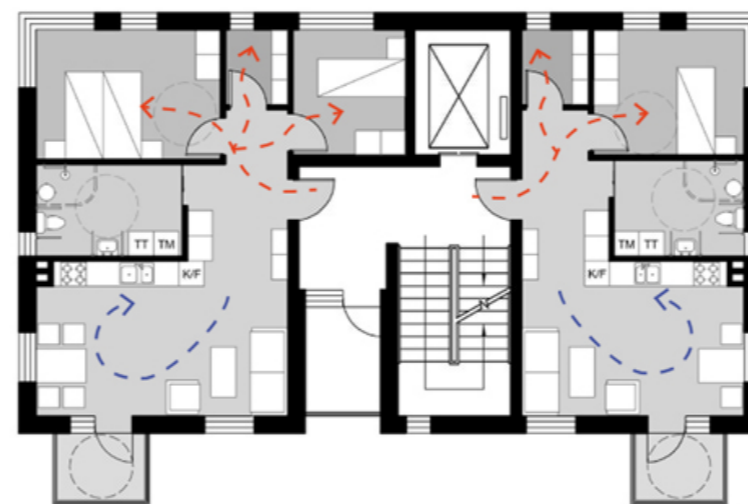
BATHROOM(two people) 1:50



BATHROOM(single people) 1:50



ROOM VENTILATION



ROOM PRIVACY

--- Staff-person working area --- Senior people private area

Apartment Features:

1. Enough space for elderly people
2. Independent storage. (It is also a working room for staff supporting senior people in personal apartment)
3. Bedroom's entrance is close to main entrance. It is easy to access from hallway to bedroom.
4. Every room has windows open to outside. The apartment has good natural light and natural ventilation.
5. Big bathroom (wheelchair and self-laundry are available in it)
6. It has possibilities for integrity of one person of a couple during the times when the other one gets help.
7. Each apartment has own balcony, and there is a common terrace on each floor (except first floor).