

DEMENTIA



VILLAGE UTBY

Residential healthcare - housing for senior

Content

Project Information.....	01
Site Conditions.....	03
Site Plan.....	04
Sections And Facade Matrials.....	05
Activity Map.....	06
Overview All Plans.....	07-08
Landscape.....	09-10
Entrance Building.....	11-12
Department 1-6.....	13-14
Department 7-12.....	15-16
Apartment.....	17-18



Vision

Our vision has been to create a sense of home. To do so, we have emphasized the concept of the village. Therefore, the living units have been arranged to create both a sense of individuality and social inclusion.

We have worked primarily with three building typologies. The suburban, the urban, and the modern. This is to create the same feeling of diversity, variety, and distinctiveness as would be experienced in the urban landscape of the outside world.

For the living units we have chosen rather domestic typologies reminiscent of traditional dwelling. The suburban living units are placed on the eastern side of the plot. This is to create a connection and continuity with the surrounding low-scale residential area of Utby. On the top of the hill, to the south-west, we have chosen to place the larger, more urban, structures. These overlook the landscape and create a distinct “town-like” silhouette.

For the common and administrative areas, such as the entrance building, café, and the handmaking area, we have however chosen a modern design language with the use of glass, steel and both sharp and organic shapes. Consequently, these buildings create a contrast to the more traditional style of the living units.

In between the buildings we have put a lot of weight on the parks and courtyards. The green courtyards connect all the buildings on the different layers with pathways and small squares to further emphasis the village concept. But additionally, the green areas are seen as essential for health promotion and well-being. So, they are designed for variety and different kinds of stimulation for the senses. There are for example active spaces for gardening or boule, as well as quiet spaces for meditation or to just enjoy the view.

Whoever the residents of this dementia village are, or wherever they come from, our intention is that they will feel at home, safe, and part of a lively and inclusive community.

Project of
Erica Wagné, Magnus Gabrielsson, Ziyue Chen



Site Conditions

The site is located on a tree-covered hill in the center of Utby, Gothenburg, surrounded by residential areas on all sides, a church, and a preschool. Today, the untouched nature on the hill is mainly used by the local community for recreation. The north-eastern corner of the site is currently used for allotment gardens.

There are a lot of potential and unique characteristics on the site that we think should be preserved and enhanced. Three qualities we immediately recognized were the possibilities of the topography, the scenic viewpoints, and the opportunity to connect with the surrounding community.

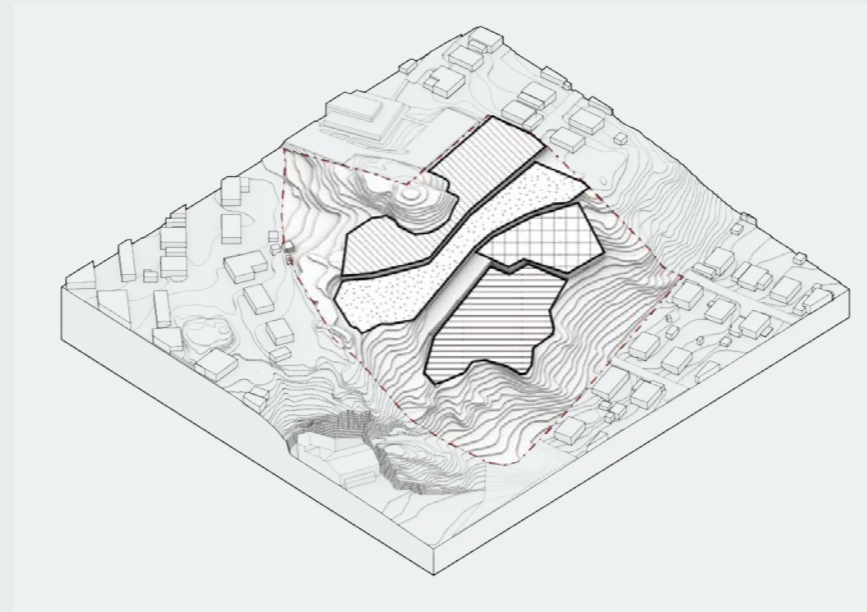
We have chosen to use the road for the church as the main access point, as this road is the only nearby connection dimensioned for heavier traffic. The parking for the church will be extended to serve the dementia village as well. We see this as the most rational solution, as this would have the least effect on existing nature, sightlines, and nearby traffic.

Topography has with no doubt been the biggest challenge. We have, however, chosen to see the topography as an asset instead of an obstacle. Therefore, we have worked with the full height off the hill by building in different levels with flattened areas used as parks in between the living units. Connecting these levels, we have an accessible pathway stretching through the whole site.



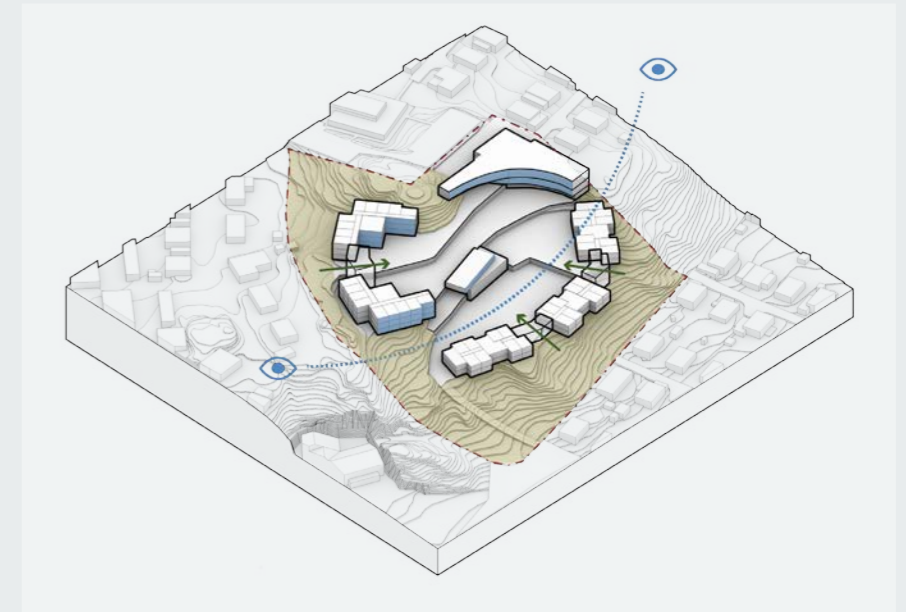
57°44'20.6"N 12°03'18.1"E

Topography & Earthwork Balance



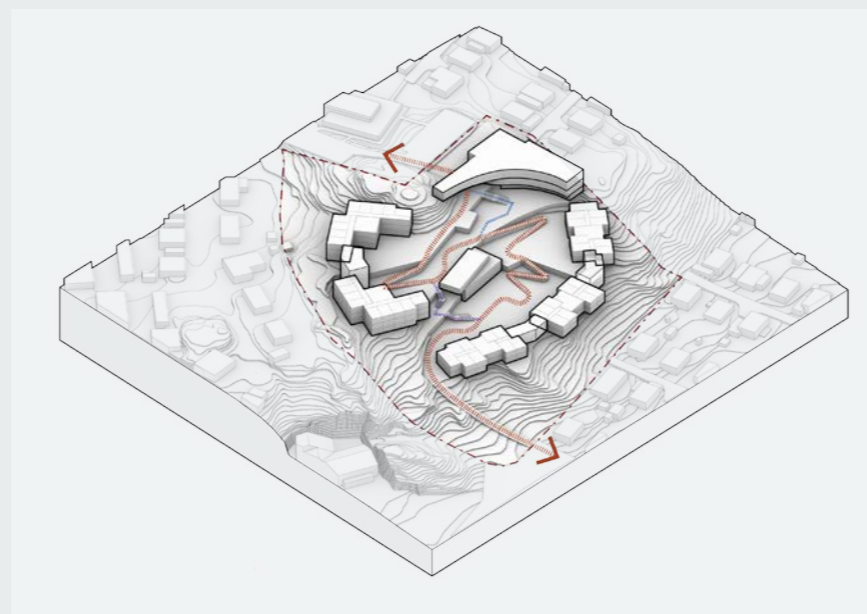
View & Nature

The nature has been preserved where possible and the buildings have been orientated for the best sightlines towards the scenery.



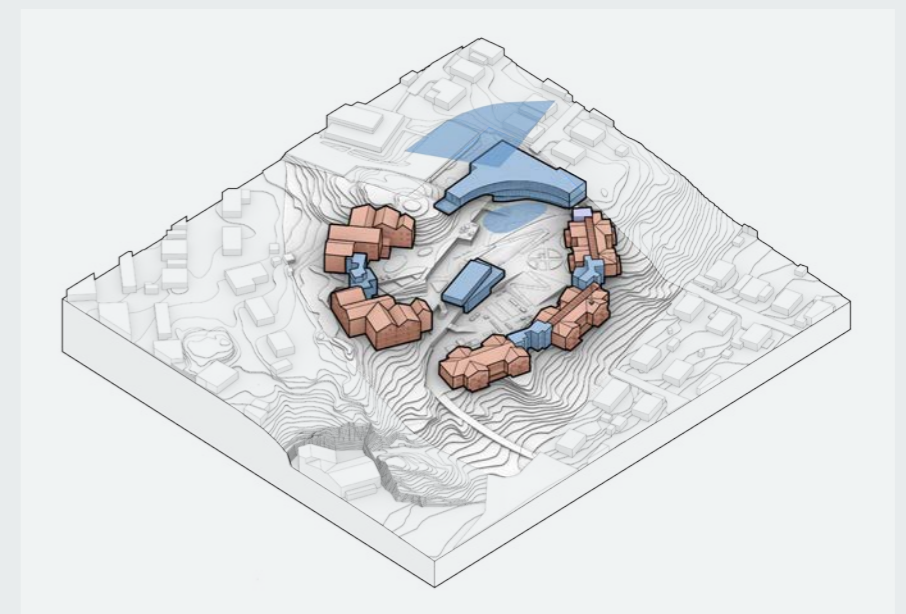
Accessibility & Delivery

There are two main access points, one from the bottom of the hill and one from the top. These are connected with a meandering pathway with a gentle inclination that stretches through the whole building complex.



Diversity & Connection

Different building typologies for different functions create a sense of diversity. The entrance building creates a connection both to the outside community and to the inside of the dementia village.



Site Plan

The site is surrounded by residential areas and has a 20 meter height difference.

Based on the original topography, we have kept four height differences as platforms. The entrance building is easy to access from the surrounding community and the church. Different courtyards are connected by accessible ramps and activity staircases. The units surround these courtyards and central pathway. The public area in the center is convenient to use by the elderly.

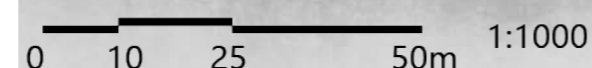
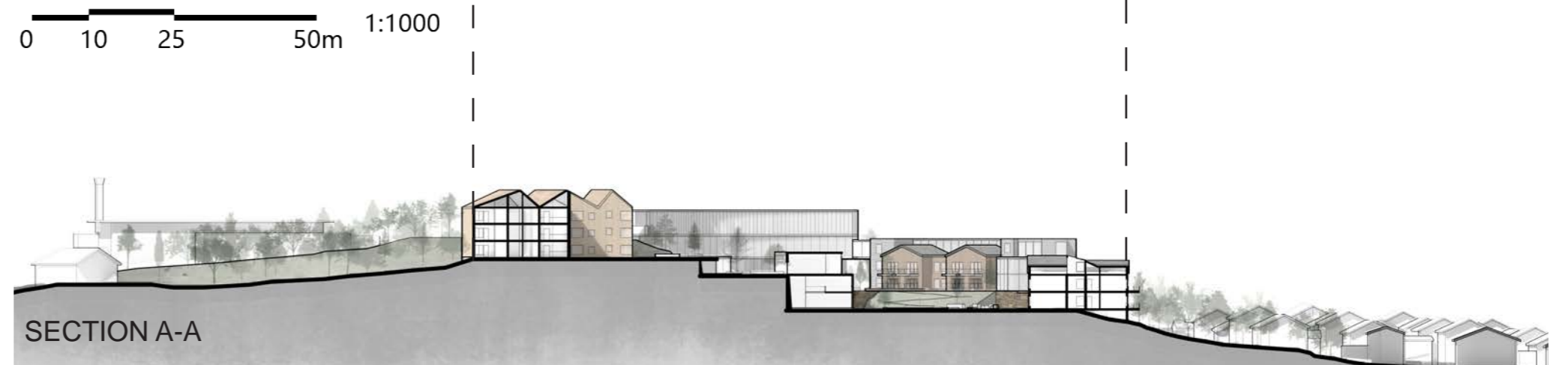
The residential housing area is close to the site, so we have chosen to keep a green tree covered area between our units and the surrounding houses. The elderly can enjoy nature and greenery inside their home as well as a variety of activities outside. From the courtyard towards the green area, the completely public courtyard to the shared kitchen and living room, and the private home.

This dementia village is not an isolated island away from the outside society. It is a part of the community. The entrance building and the interactive courtyards can also open up for the community for special occasions. The form of the units are similar to the surrounding houses with their pitched roofs and moderate heights, just two or three floors. On the inside, the connections between the units are the entrances where the outside and inside blend together. On the outside, the foliage of the wild forest and the arranged courtyards connect as well.

Facts:

- 12 units
- 96 apartment
- 22 641 sqm sit area
- 4 868 sqm footprint

- 1. Unit 1-3
- 2. Unit 4-6
- 3. Unit 7-8
- 4. Unit 9-10
- 5. Unit 11-12
- 6. Entrance
- 7. Public Space

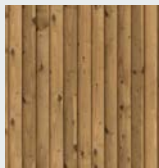


Sections & Facade Materials

There are primarily three different materials for the facades. Natural wood, marigold painted wood, and glass. The purpose is to create a sense of variety and diversity between the different units and functions.

For the lower scale suburban typology, we have chosen the lighter marigold painted wood to connect it with the color palette of the surrounding residential area of villas and row houses. The darker natural wood has been chosen for the taller buildings as these are perceived as heavier and more urban. Lastly, the common buildings are mainly clad with glass facades for a representative and public character.

SECTION FASAD



Natural wood



Marigold painted wood



Tinted glass



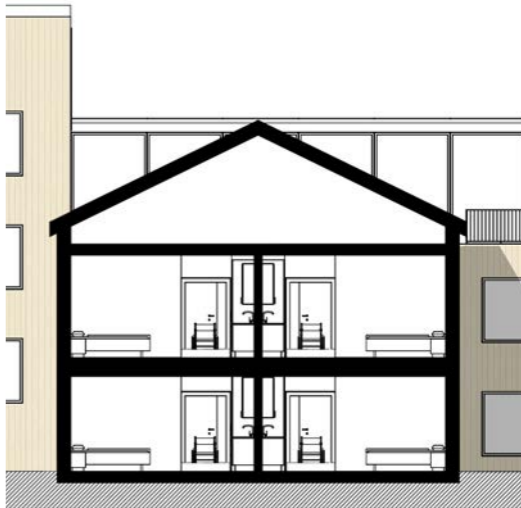
FACADE UNIT 1-6



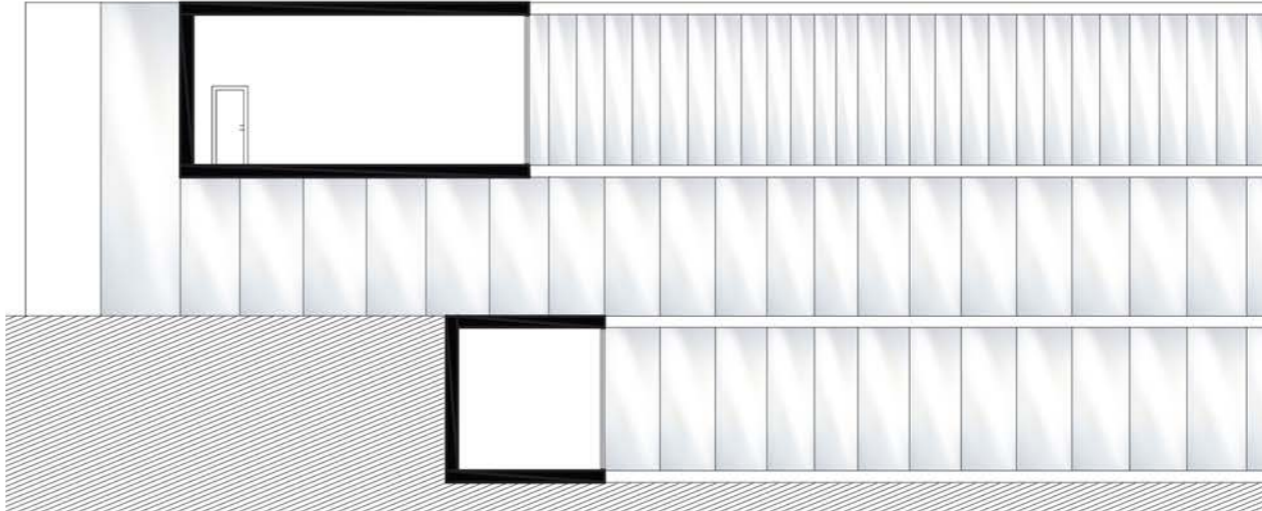
SECTION UNIT 1-6



FACADE UNIT 7-12



SECTION UNIT 7-12



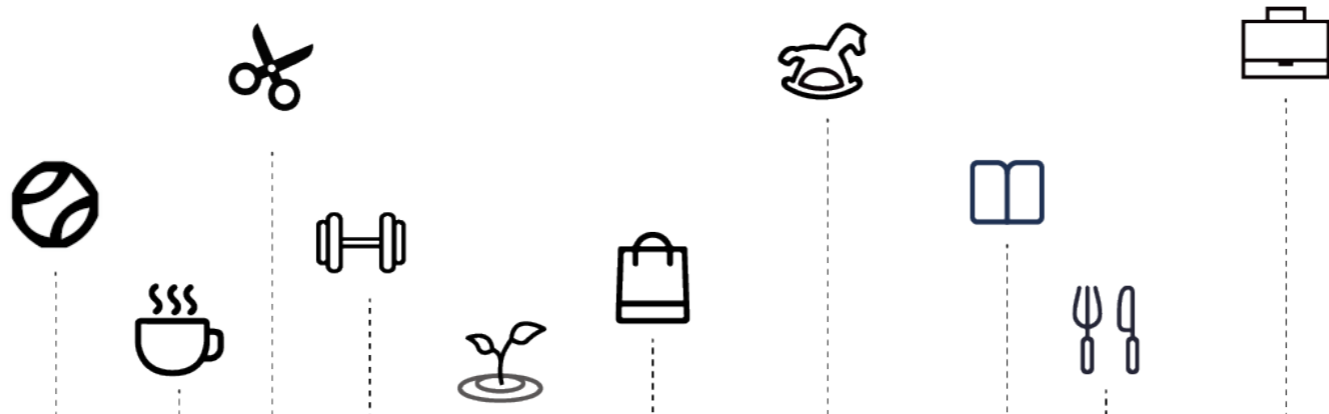
SECTION ENTRANCE




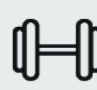






0 2 5 10m 1:200

SIDE 5

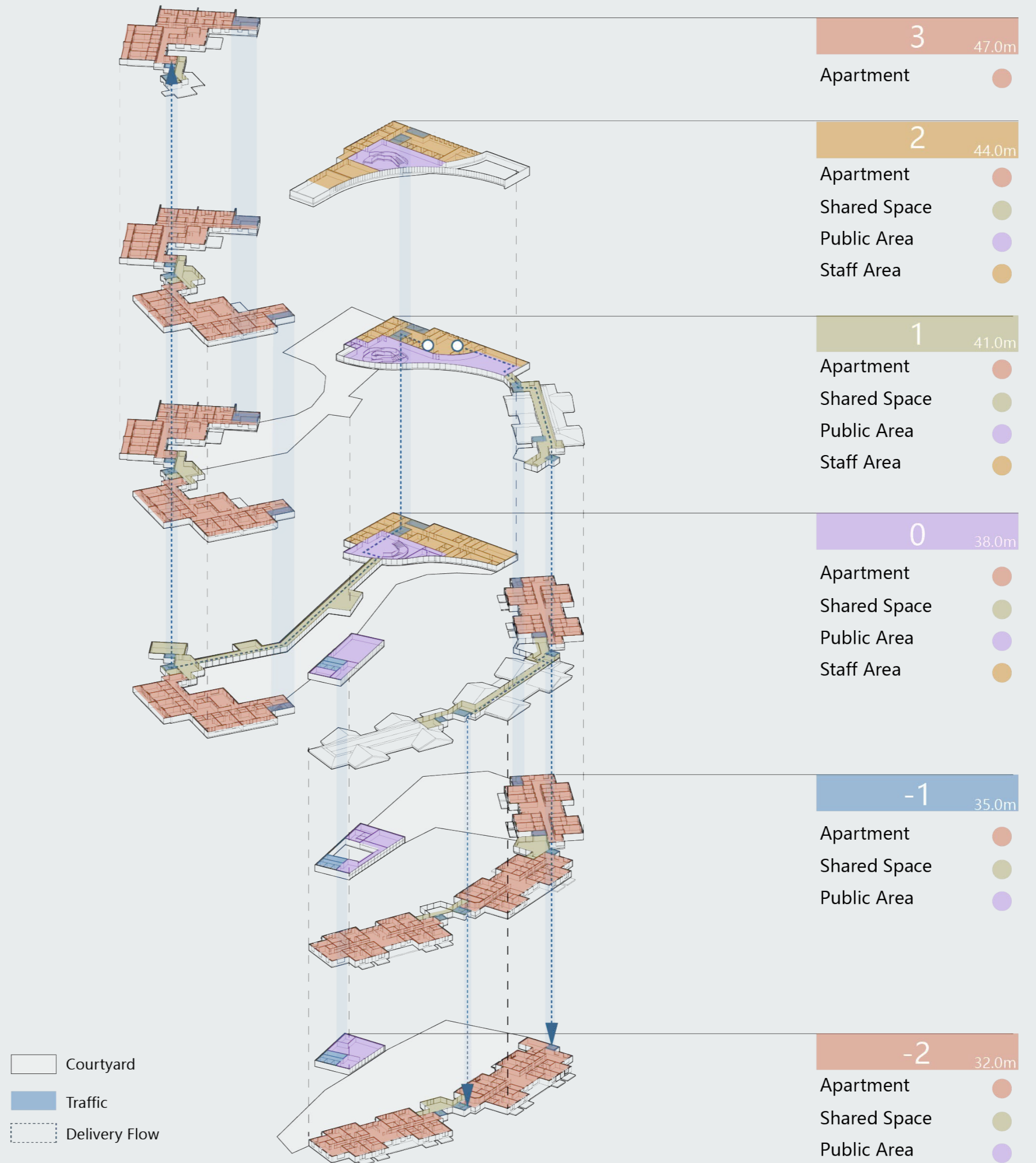
Activity Map

We have tried to create a smaller community where you as a resident should have access to everything as in ordinary life. We also want to create a safe and welcoming place for staff and visitors.



-  Boules court
-  Coffee bar
-  Hairdresser and pedicure
-  Gym and gymnastics
-  Planting and gardening
-  Shopping
-  Playground for children
-  Small library
-  Restaurant for the public
-  Staff department





Landscape

Based on the four height differences, four courtyards can be used by the residents from any unit. Different courtyards are connected by accessible ramps and activity staircases. Programmed features and activities as well as accessible daily infrastructure empower the residents to use the courtyards for a wide range of activities in a health-promotive way.

Based on the shape and location of the outside spaces, we have designed the courtyards with different characteristics. Gentle slopes in the landscape and terraced garden beds are used to connect the different heights.

The organic landscape in the highest courtyard connects to the entrance building and the hillside. Interactive activity spaces are put on the second highest yard, where some parts can open up to the community and let the elderly interact with people of different ages. The farming and gardening area is in the courtyard one level below. Lastly, the activity yard is placed on the lowest level where it can be seen easily from any unit. Our intention is to promote activity and stimulate the individual needs of the residents no matter their circumstances.

- 1. Organic Courtyard
- 2. Interactive Courtyard
- 3. Farming Courtyard
- 4. Activity Courtyard





2. Interactive Courtyard



3. Farming Courtyard



4. Activity Courtyard

Entrance Building

The entrance building is the first thing you see from the road as you approach the dementia village on the top of the hill. With a first impression of a rather closed facade towards the north and east, the building subsequently opens up to the scenic views, as well as overlooking the courtyards and the living units, with a large curved glazed wall to the east and south.

Functions included in the entrance building are the main kitchen, the restaurant, administration and staff areas, technical rooms, and support areas.

To deal with the topography of the site, the building is vertically divided into three floors connected by elevators and a big, centrally placed staircase with a skylight. To serve the logistical requirements, there are two service corridors at the lowest and middle floor connecting the entrance building to the living units to the east and south at different layers.

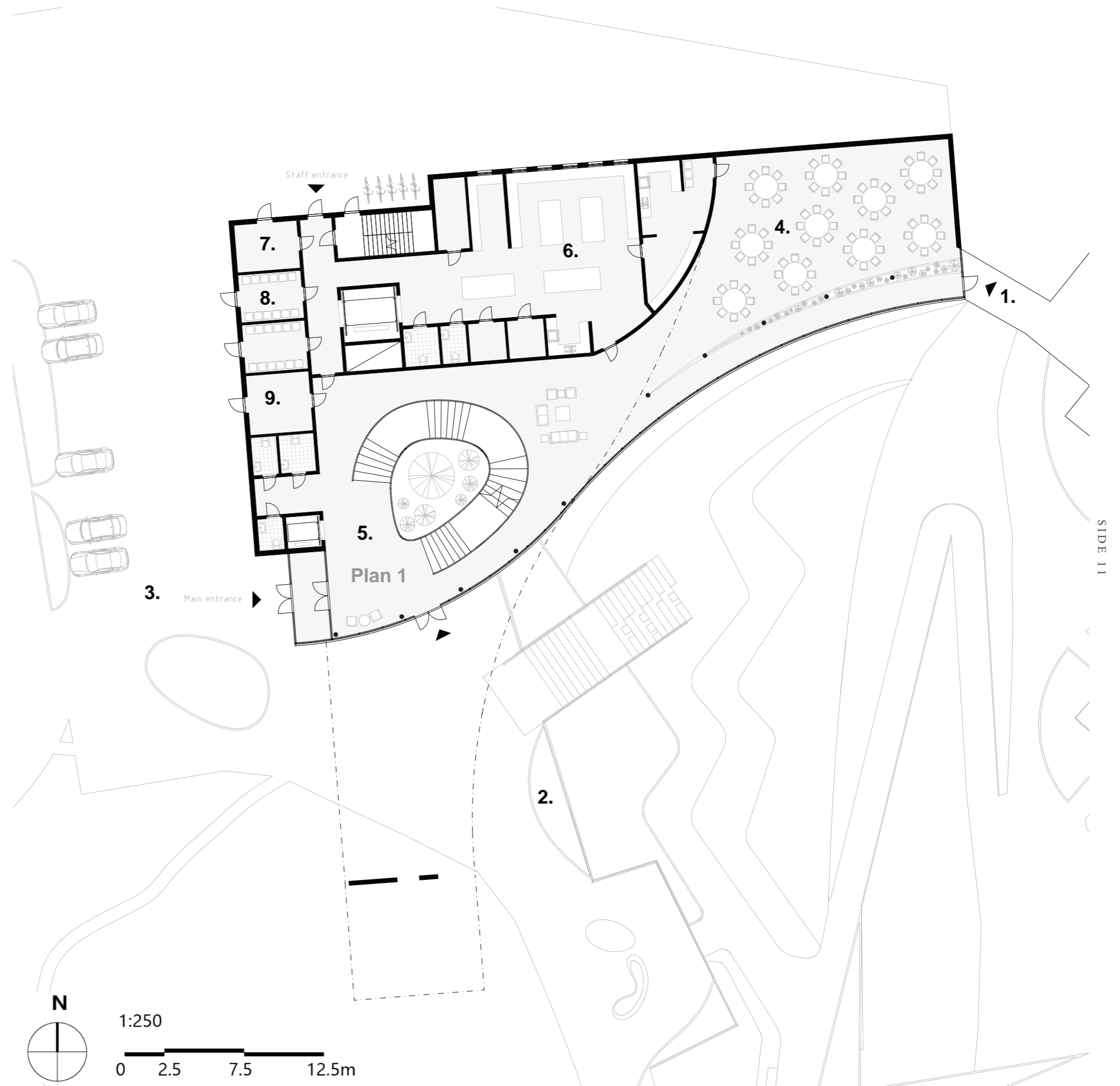
Additionally, there is a bridge connecting the top floor of the building to the rock formation on the other side. This creates a framed view towards the gardens as you approach the building complex, as well as a boundary between the outside world and the dementia village.

Entrance Plan 1

505 sqm

1. Corridor on the roof to department 7-12
2. Corridor underground to department 1-6
3. Main entrance
4. Restaurant
5. Atrium staircase
6. Kitchen
7. Delivery
8. Waste room
9. Storage for outdoor wheelchairs

ENTRANCE BUILDING



SIDE 11



1. Corridor on the roof



2. Underground corridor



3. Entrance to the entrance building



4. Restaurant



5. Atrium staircase entrance

Department 1-6

The departments are spread over three floors. Departments 1-6 share entrance 1. This entrance has entrances on two floors and a roof terrace at the top as well as a ventilation room on the ground floor. The entrances are designed as indoor/outdoor spaces that resemble the facades of the existing buildings. There is an opportunity to sit here if the weather is bad but you still want to get out of the department.

Departments 1-6 are designed with a corridor where the apartments are located on one side and the windows on the other side where you can see out on the courtyard. In the middle of the department we find the kitchen with a balcony and a TV-living room. At one end we have the entrance where you can sit and look out or wait for visitors. On the other end we have a lounge area and an emergency exit. The shape of the building is adapted so that you can have a view out to the end of the corridors.

The departments are arranged in different color themes where the doors and interior details are colored according to the theme. The doors that the residents should pay attention to are colored according to the theme while the doors for the staff blend in with the color of the wall. Department 1 has the theme color yellow.

You access the departments mainly via the outside road. Alternatively, you can get to department 1-6 from the entrance of the building, one staircase down to floor 0, through an underground corridor with a glazed path to the courtyard, then take the elevator or the stairs up to the right department. The corridor also has doors to access the courtyard.



1. Entrance department 1-6
plan 2

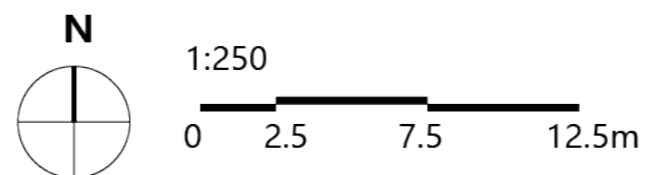


Department 1

505 sqm

Living area 214 sqm

1. Entrance to department 1-6
2. Waste room
3. Entrance department 1
4. Kitchen
5. Livingroom
6. Lounge area
7. Exit





2. Corridor



3. Living room



4. Kitchen



4. Kitchen

Department 7-12

The departments are spread over two floors. Department 7 and 8 share entrance 3 with a ventilation room on the ground floor. Departments 9-12 share entrance 2. The entrances are designed as indoor/outdoor spaces that resemble the facades of the existing buildings. There is an opportunity to sit here if the weather is bad but you still want to get out of the department.

Departments 7-12 are designed with a corridor where the apartments are located on either side. In the middle we find the kitchen and a lounge area with a balcony. Here you have a view of the courtyard and a nice view out over the mountains. At one end we have the entrance where you can sit and look out or wait for visitors. On the other end we have a TV-living room, and an emergency exit. The shape of the building is adapted so that you can have a view of both ends of the corridors.

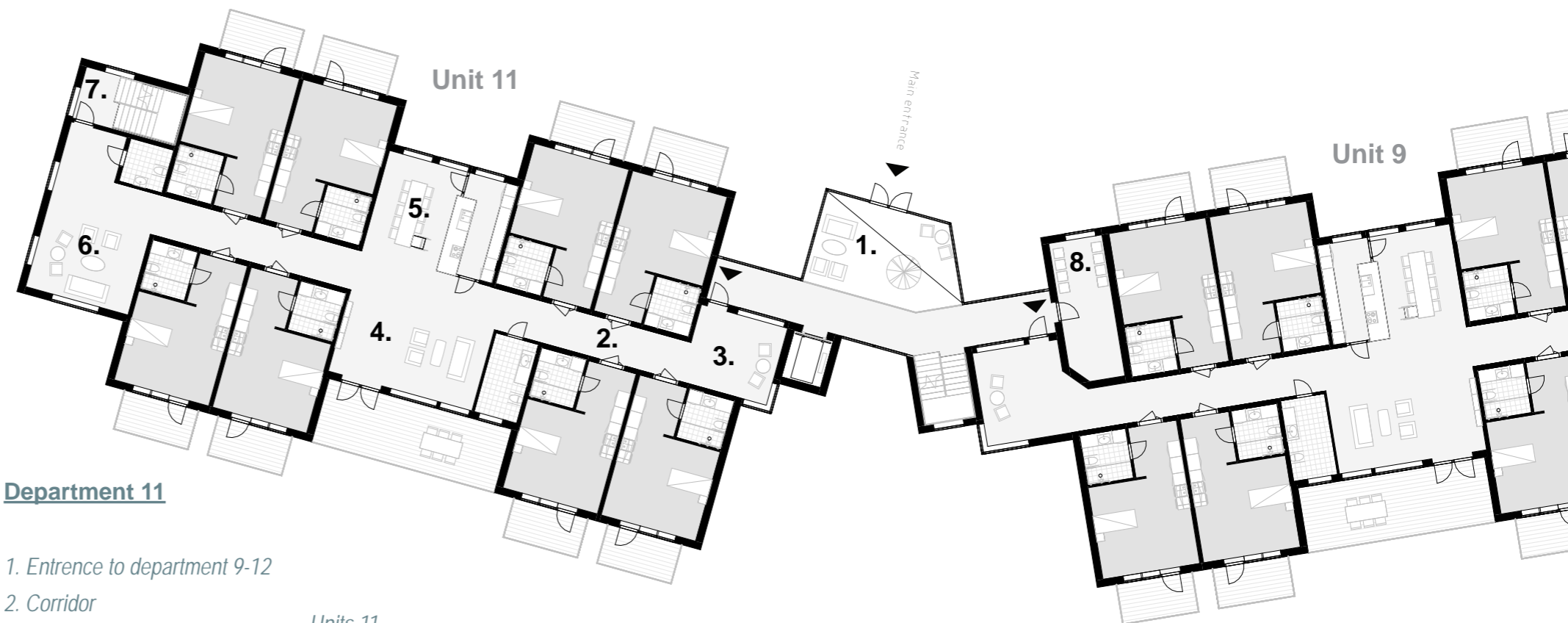
The departments are arranged in different color themes where the doors and interior details are colored according to the theme. The doors that the residents should pay attention to are colored according to the theme while the doors for the staff blend in with the color of the wall. Department 11 has the theme color green-blue.

You access the departments mainly via the outside road. You can also get to department 7-12 from the entrance of the building, level 1, through the restaurant through a glazed corridor that continues on to the roof where you can then take either the elevator or the stairs down to the right department. The roof corridor also has access to roof terraces.

DEPARTMENT 7-12



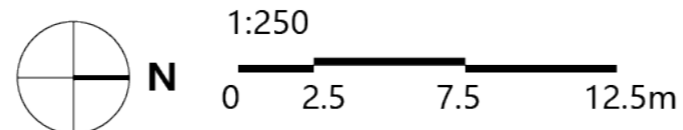
1. Entrance department 9-12
plan 1

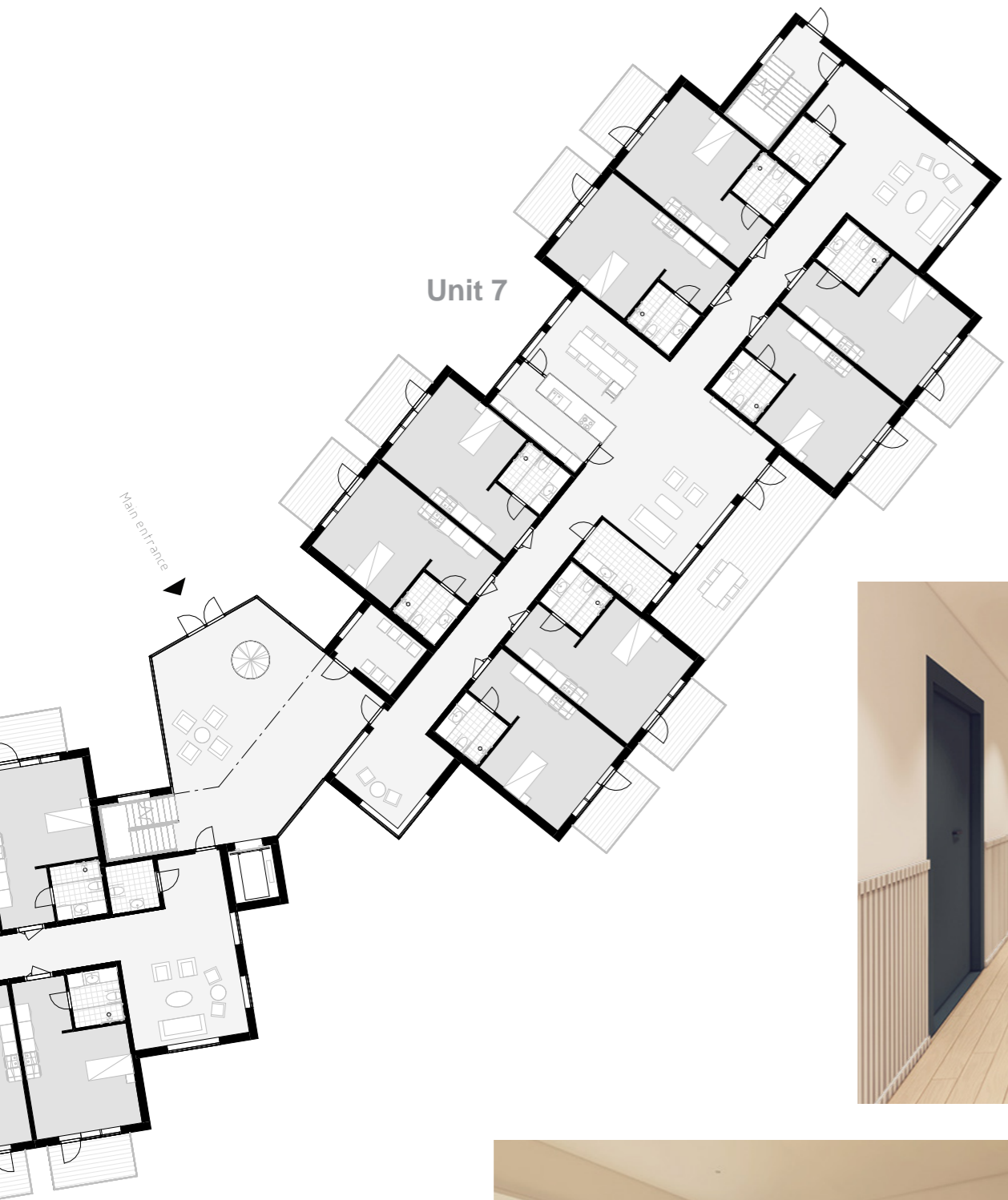


Department 11

1. Entrance to department 9-12
2. Corridor
3. Entrance department 11
4. Lounge area
5. Kitchen
6. Livingroom
7. Exit
8. Waste room

Units 11
475 sqm
Living area 175 sqm





4. Laungh area



2. Corridor



5. Kitchen



3. Entrence department 11



4. Laungh area

Apartment

It is important to be able to personalize your own apartment.

By creating multi-functional apartment areas with flexible furnishing possibilities, we have intended to create opportunities for the resident to furnish in a personal way.

Each room is equipped with a care bed, lift, storage, a small kitchen containing a fridge, microwave, and a sink.

The hall area is wide with the possibility of more storage or furnishing. The entrance has two doors for the possibility to create a larger opening if needed. The doors are colored according to the department's color theme.

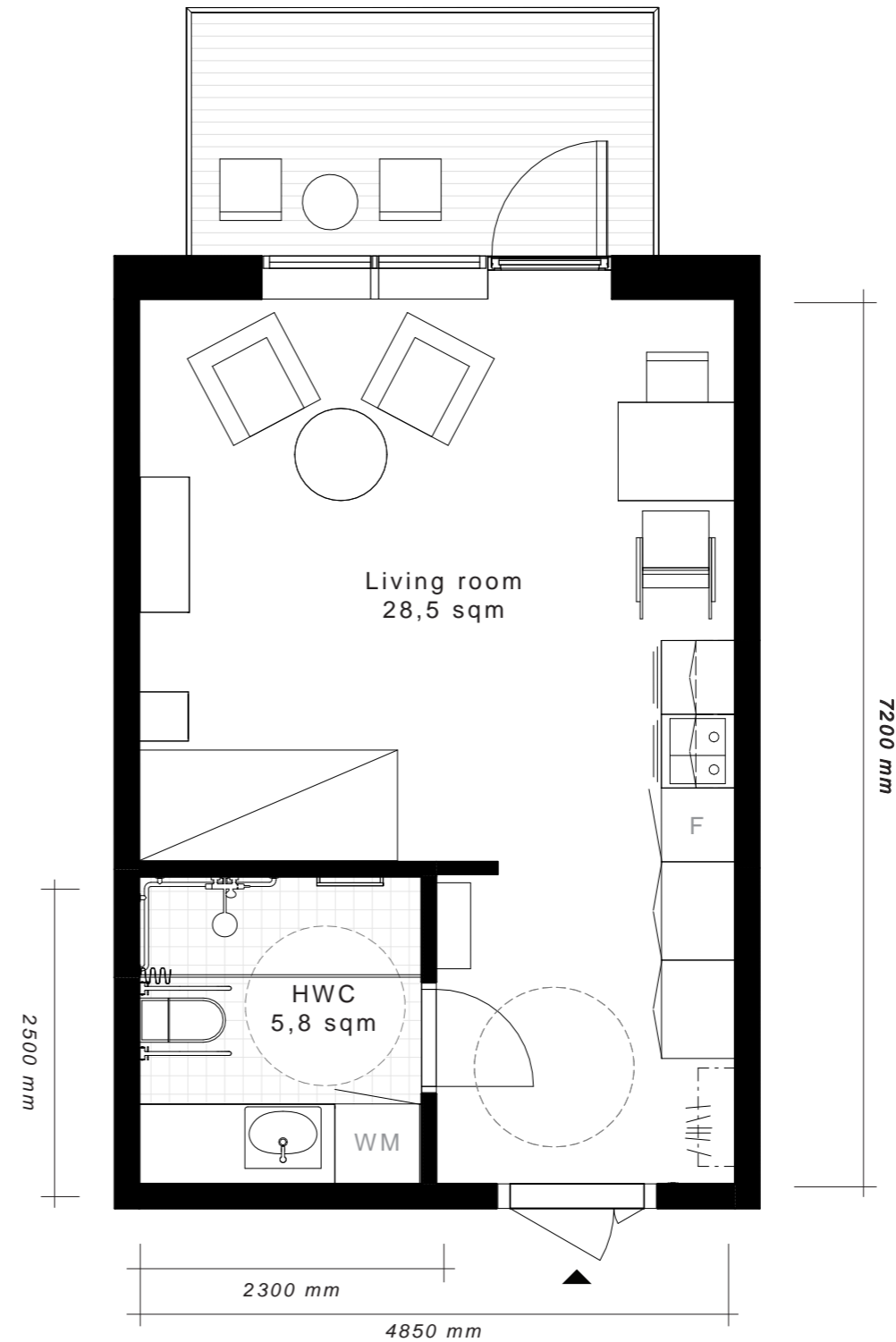
The bathrooms are tiled with colors that contrast for easier orientation and equipped with handrails, storage, and a washing machine. The shower is large with a shower curtain, which gives both more freedom of movement in the bathroom and space for staff to assist if necessary.

The colors in the apartments are conventional in an attempt to imitate the most common living room preferences among the population. The intention is to create a homely environment with familiar features. The color theme on the doors is mainly to orientate yourself in the department and to know that you are in the right place. Marked parts of the bathroom are mainly to remember what to do.

Apartment

1. Living room
2. Living room
3. Bathroom
4. Kitchen

Apartment
34,5 sqm



0 0.5 1.5 2.5m 1:50



1. Living room



2. Living room



3. Bathroom



4. Kitchen