

ROOM FOR DEMENTIA

Assisted living for people with dementia



Dementia Space

No one knows what it's like to experience space through the eyes of others. We all live in our own reality of familiarity and strangeness. People with dementia suffer from a memory loss and cognitive difficulties and because of this their personal perception of reality is changing. Things that used to be familiar are becoming confusing and learning new things are harder. Instead they must rely on the force of habit and their surroundings to help them in daily life.

This building has been designed to support people suffering from dementia by giving a dignified, safe and supported life. This is achieved by providing a homelike private apartment in a rational building that frames a generous outdoors space. For the dementia ill, the perception of time and space is changing but the notion of senses remains for a much longer time. The smell of freshly baked bread in the entrance, the easy access to a balcony in the morning to breathe a fresh air and the fireplace in common space are aimed to waken the senses every day.

With inspiration from dementia villages in Denmark and the Netherlands we have designed a dementia apartment building. The aim of dementia villages is to create a familiar, safe and lively surrounding within the building and closing it from the outside. Here all kinds of activities that life contains, such as shopping, going to the hairdresser and buying food takes place but in a less confusing way. We believe that in the urban context of Gothenburg a village isn't necessarily the most familiar environment, instead we have focused on the typology of the courtyard apartment building. It's a more efficient structure in an urban context where the land areas are limited and many people in this region has lived in an apartment building. To these blocks we have added a ground floor containing all the same functions as those who are offered in the dementia villages. This creates a lively courtyard environment and invites the people from the outside to come in.

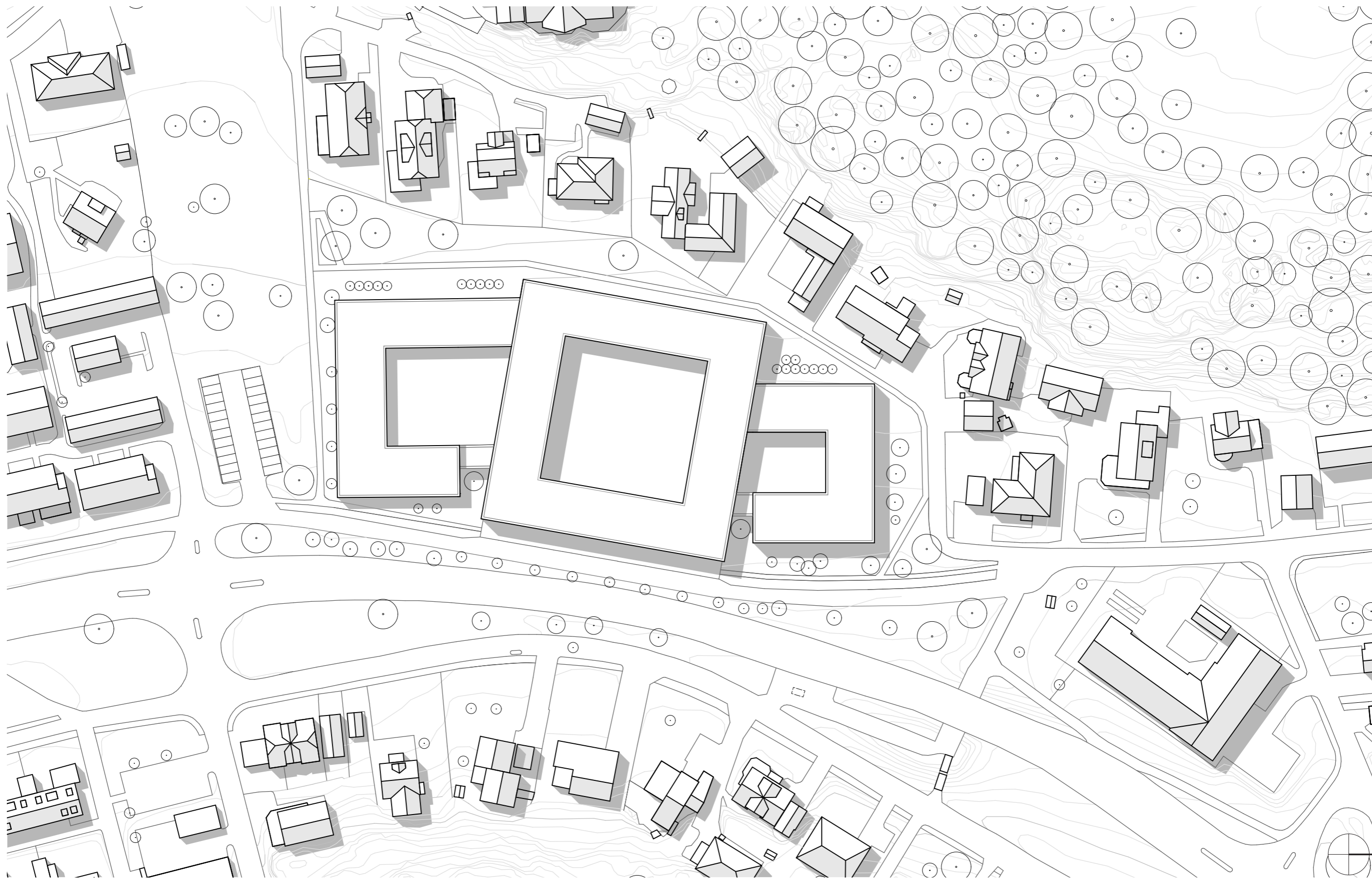
In the process we worked with some underlying concepts for both structure and design that goes through the whole building. One main idea has been to work with a grid of 2,5 x 2,5 meters to be able to organise the building in a structural way. This grid is then organised into what we call layers. The layers are both physical such as the balcony system and more experience based as different layers of privacy. With the layers it is easy to clarify different spaces and we believe this helps the dementia ill to grasp their environment.



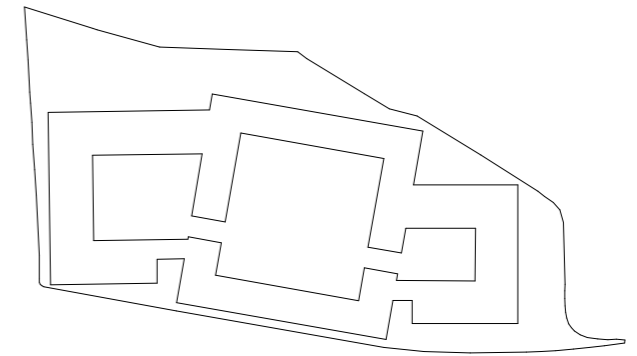
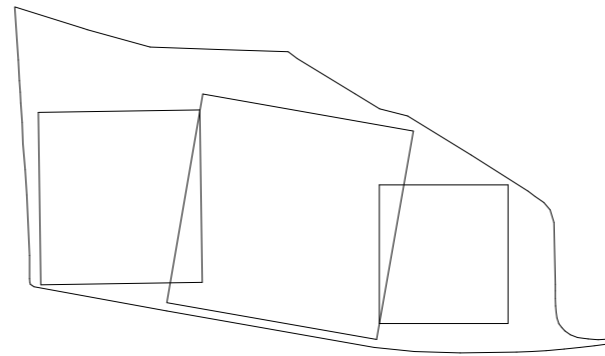
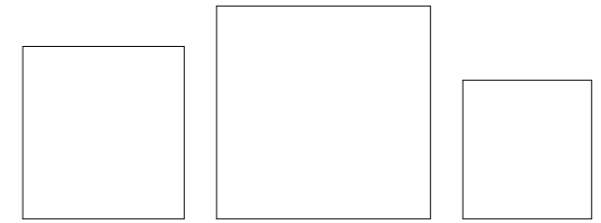
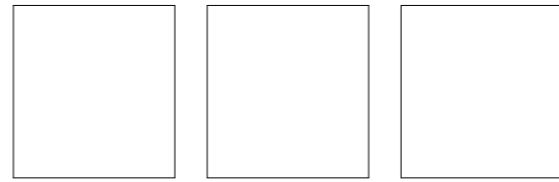
View from Önnaredsvägen



City of Gothenburg with Site



Site plan Önnaredsvägen | Scale 1:1000





East Facade - Entrance | Scale 1:400

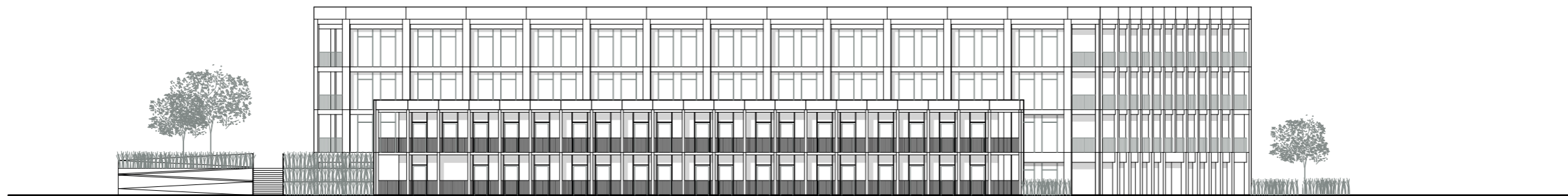


North Facade | Scale 1:400

0 50

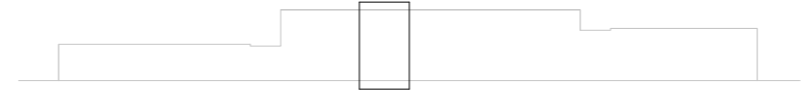


West Facade | Scale 1:400



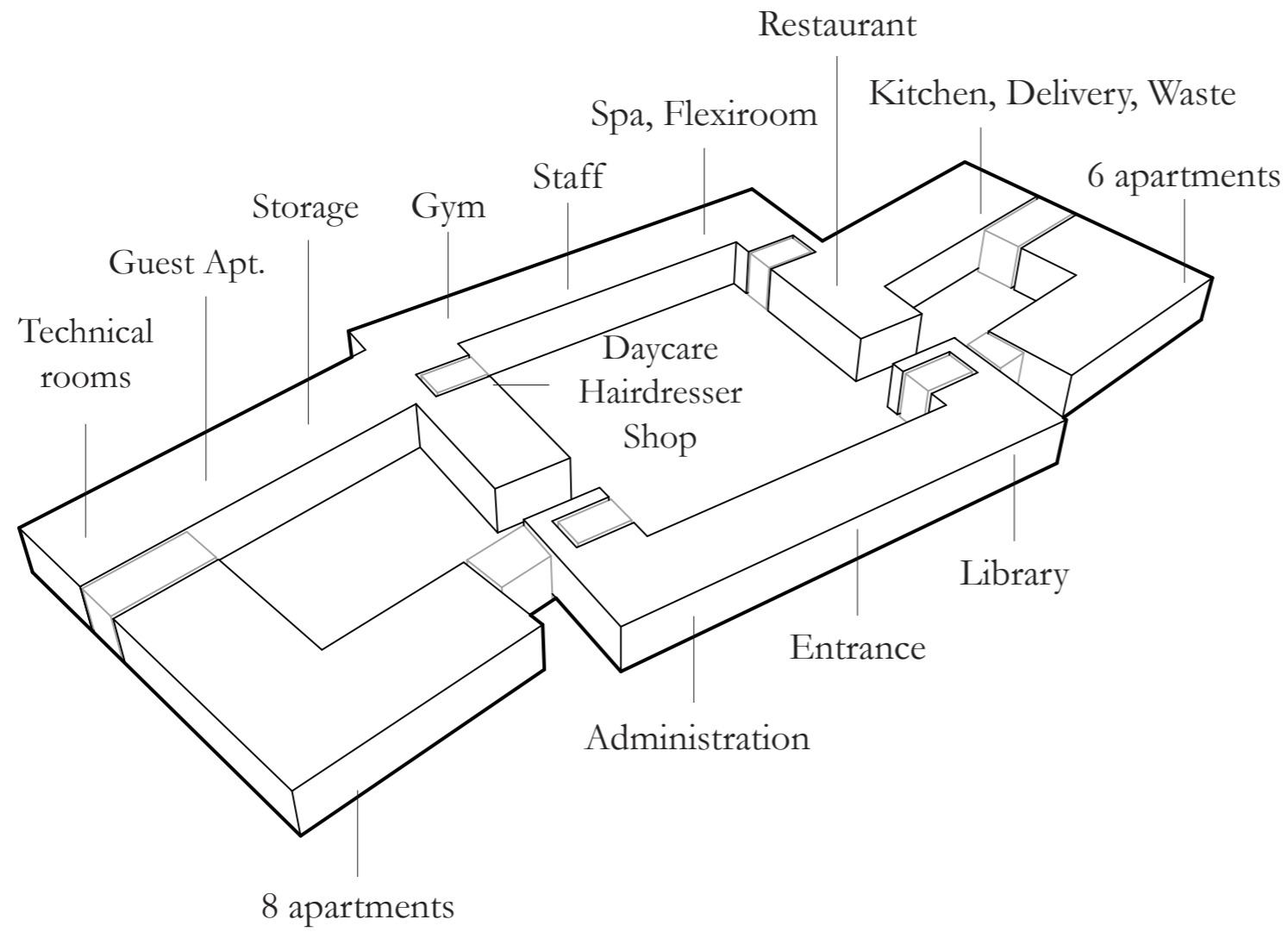
South Facade | Scale 1:400

0 50

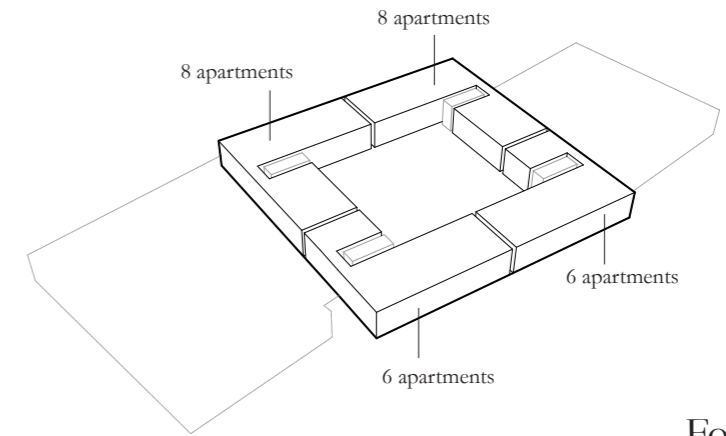


0 2m

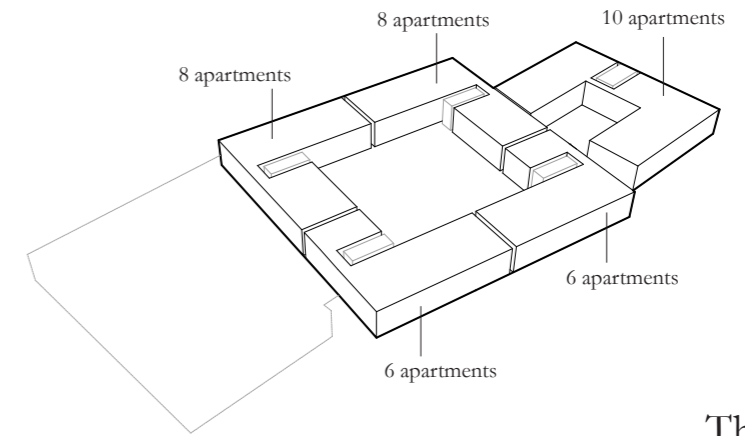
Cutout Facades | Scale 1:100



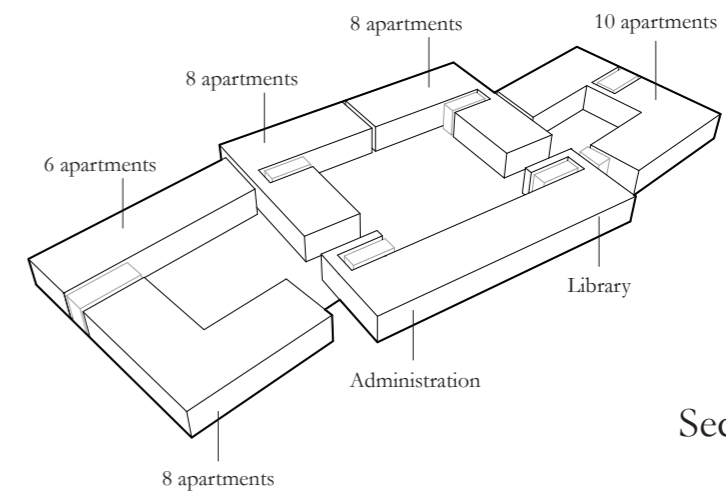
Ground Floor



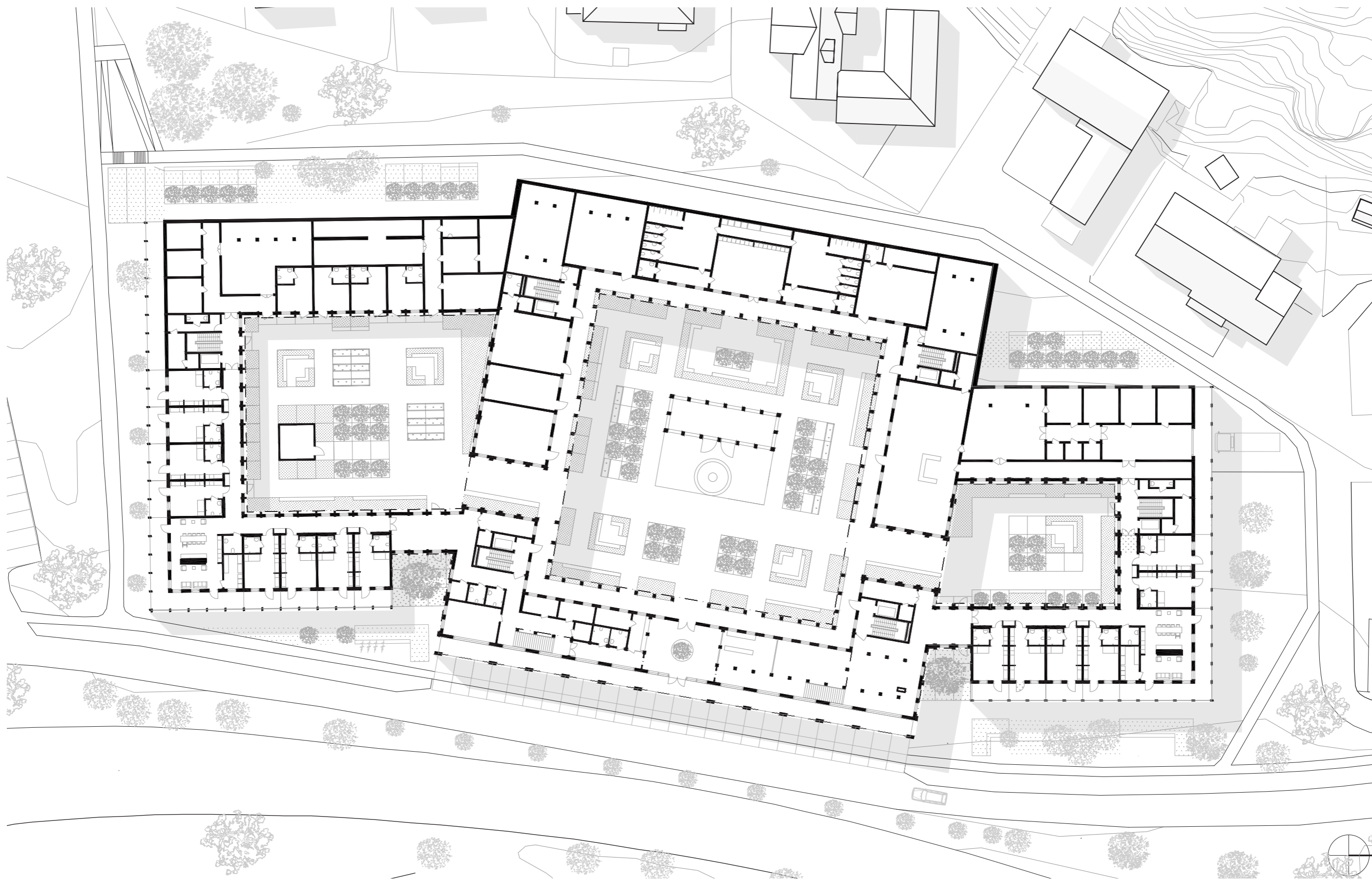
Fourth Floor



Third Floor



Second Floor

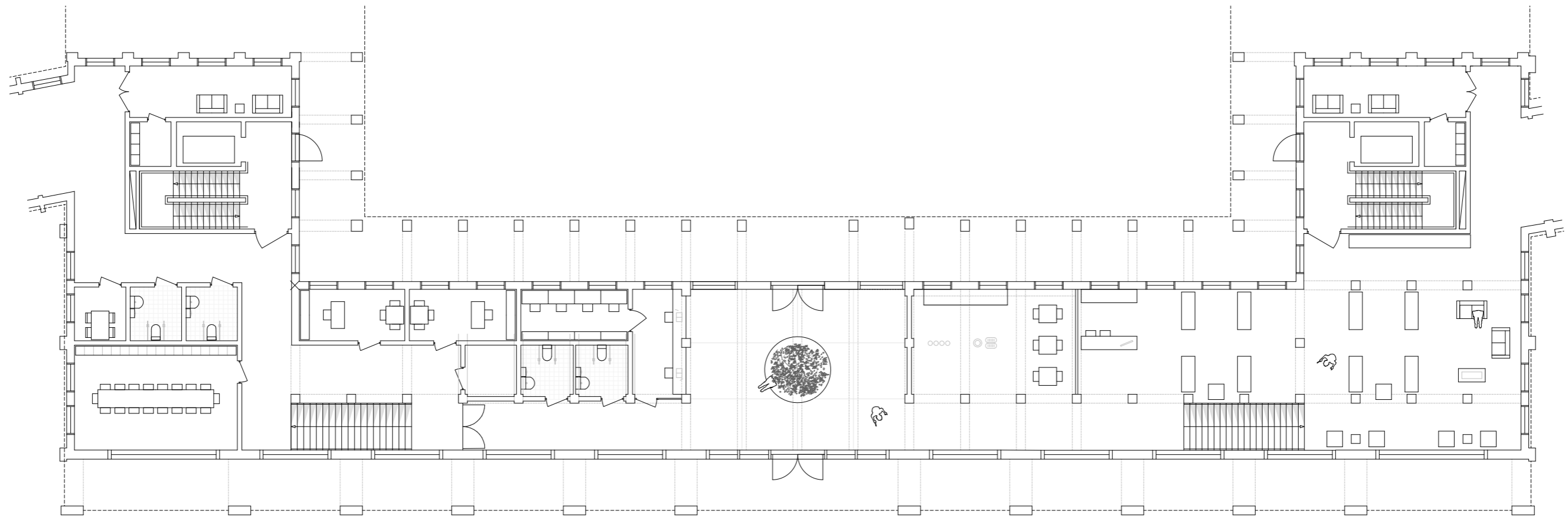


0 50

Floorplan Groundfloor | Scale 1:500



Sectional View Entrance, Administration, Library | Scale 1:200



0 5 m

Floorplan Entrance, Administration, Library | Scale 1:200

Entrance

You enter through a low arcade into a huge room where big windows frames the courtyards. You are met by the smell of newly baked bread from the bakery on the right and a reception that greets you on the left. The room is defined by its centrality marked by a tree and the wooden structure visualises the grid that is an underlying design-concept for the building.

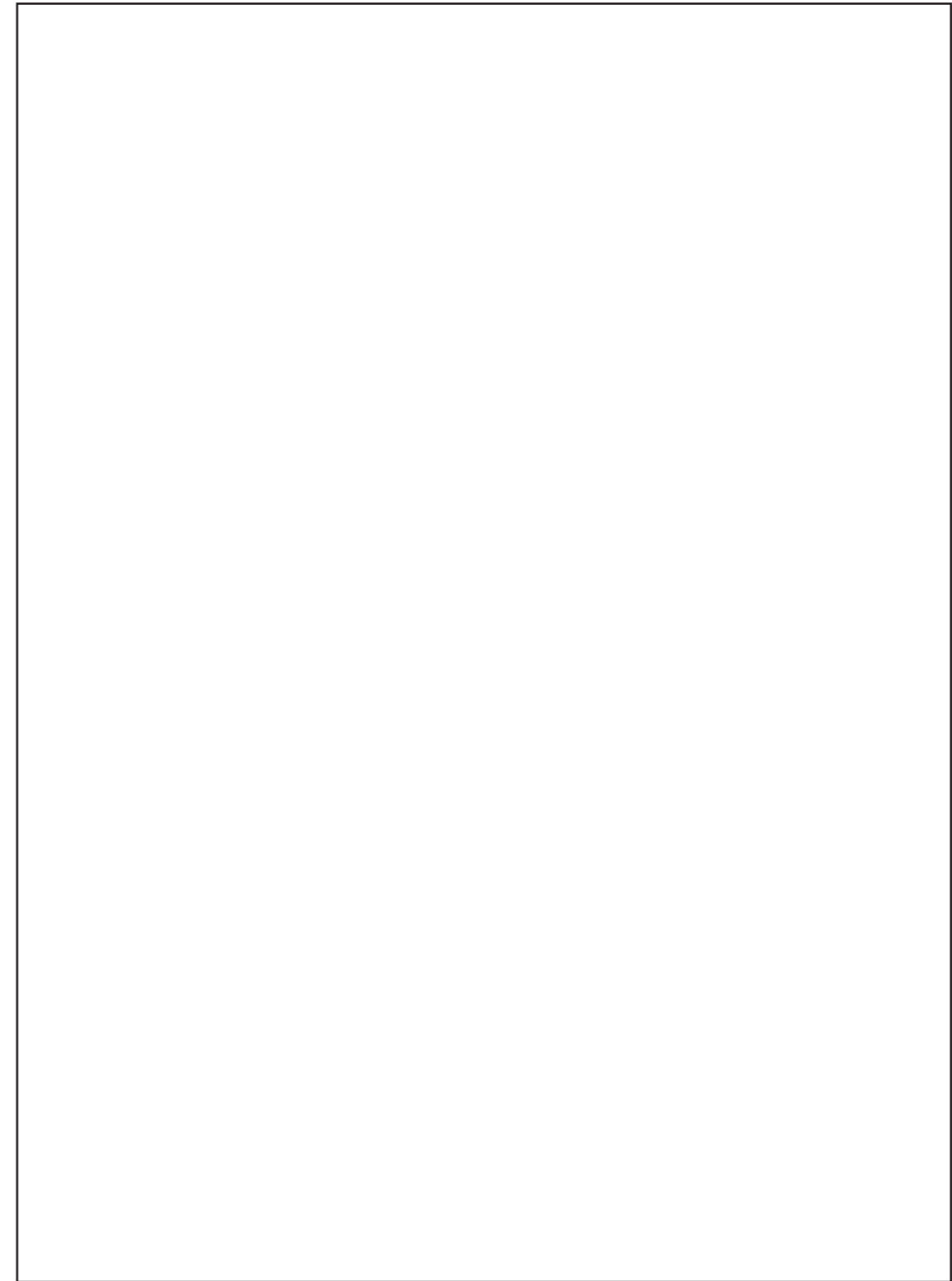


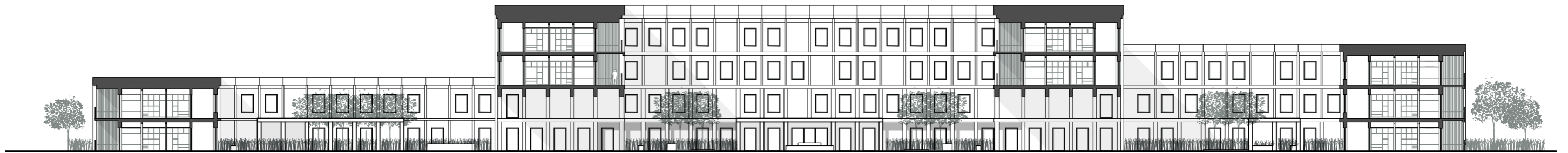
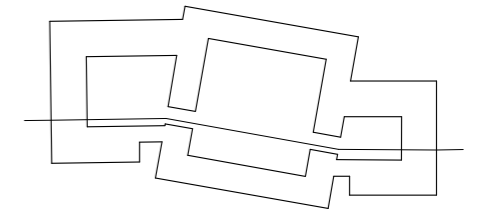
The gardens

The courtyard is defined by its three different volumes, creating three spaces with various atmospheres. The central courtyard is the most urban one, where all the activities are located. You can have a cup of coffee, a haircut, go to the day-care or sit in the library. Everything within a reachable distance. The arcade defines the central courtyards and creates a sheltered walkway that leads you to all the different activities.

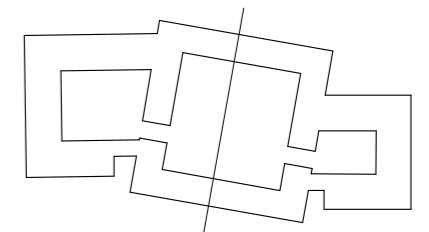
Connected to the main courtyard by tunnels you'll find two smaller courtyards belonging to each of the lower buildings. The northern courtyard is the smallest one, mainly working as an outdoor space for those living in this end of the building. The southern one is more generous and only surrounded by a two-level building, making it a good place for gardening. Here is also located the room of silence where you can go to find a peaceful time for yourself.

The reed is an important ingredient in all the courtyards. It is framing the buildings on the inside and creates small intimate spaces. The wild reed rests on the organised structure of the grid. In the courtyard corners the grid together with the reed creates intimate sitting possibilities.



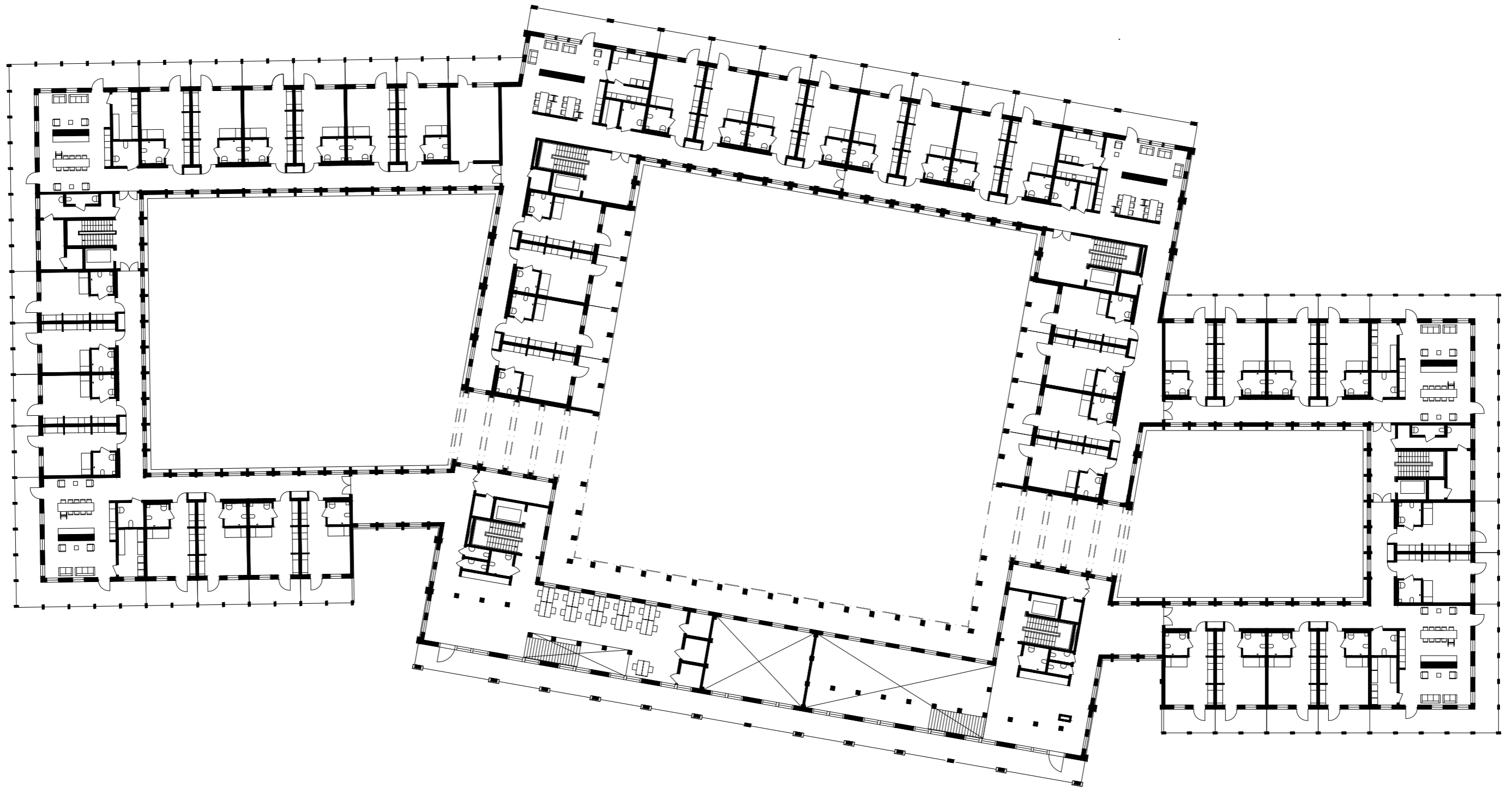


Long Section | Scale 1:400

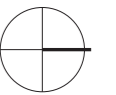


0 50

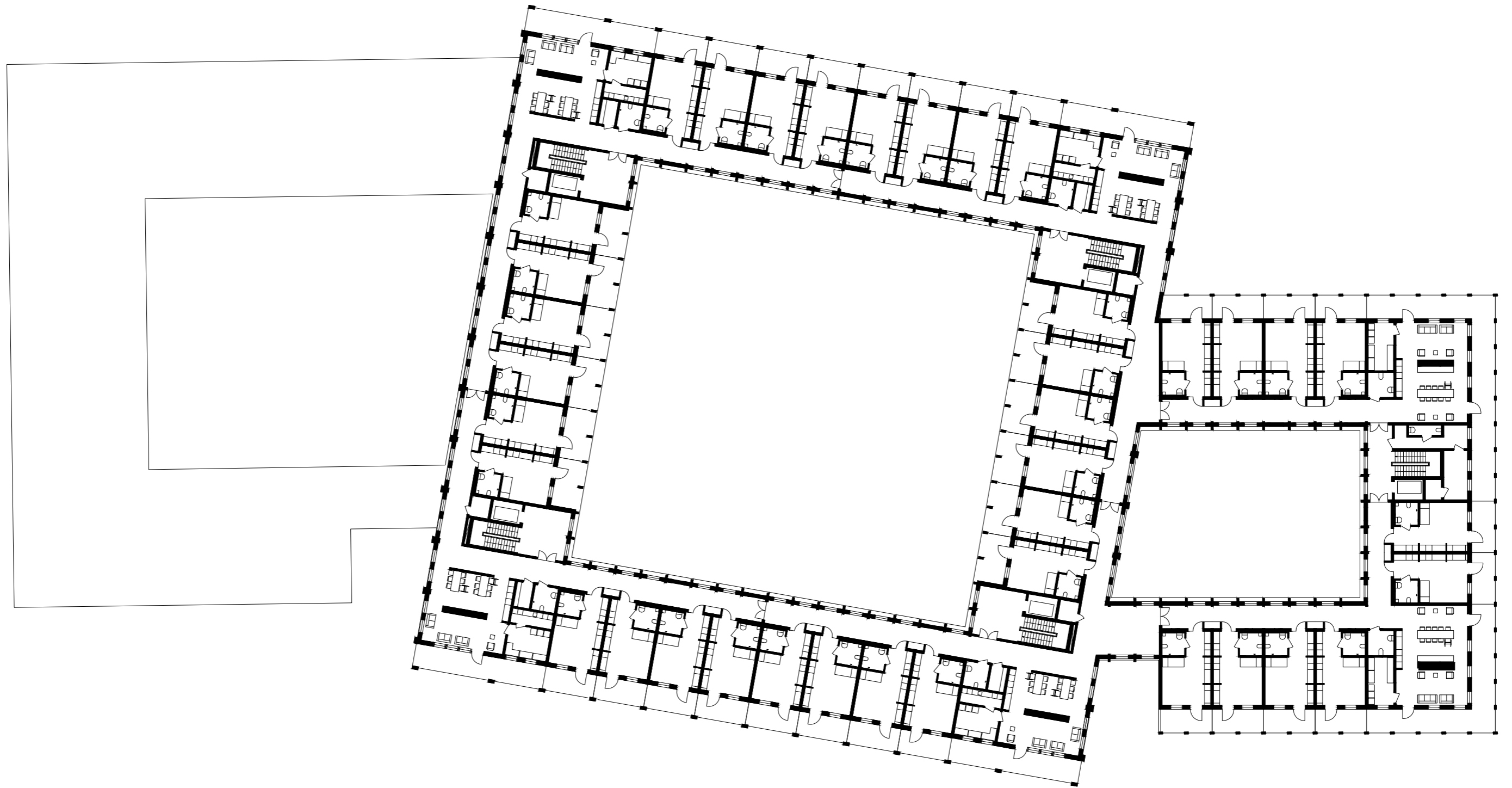
Short Section | Scale 1:400



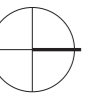
0 | | | | 50



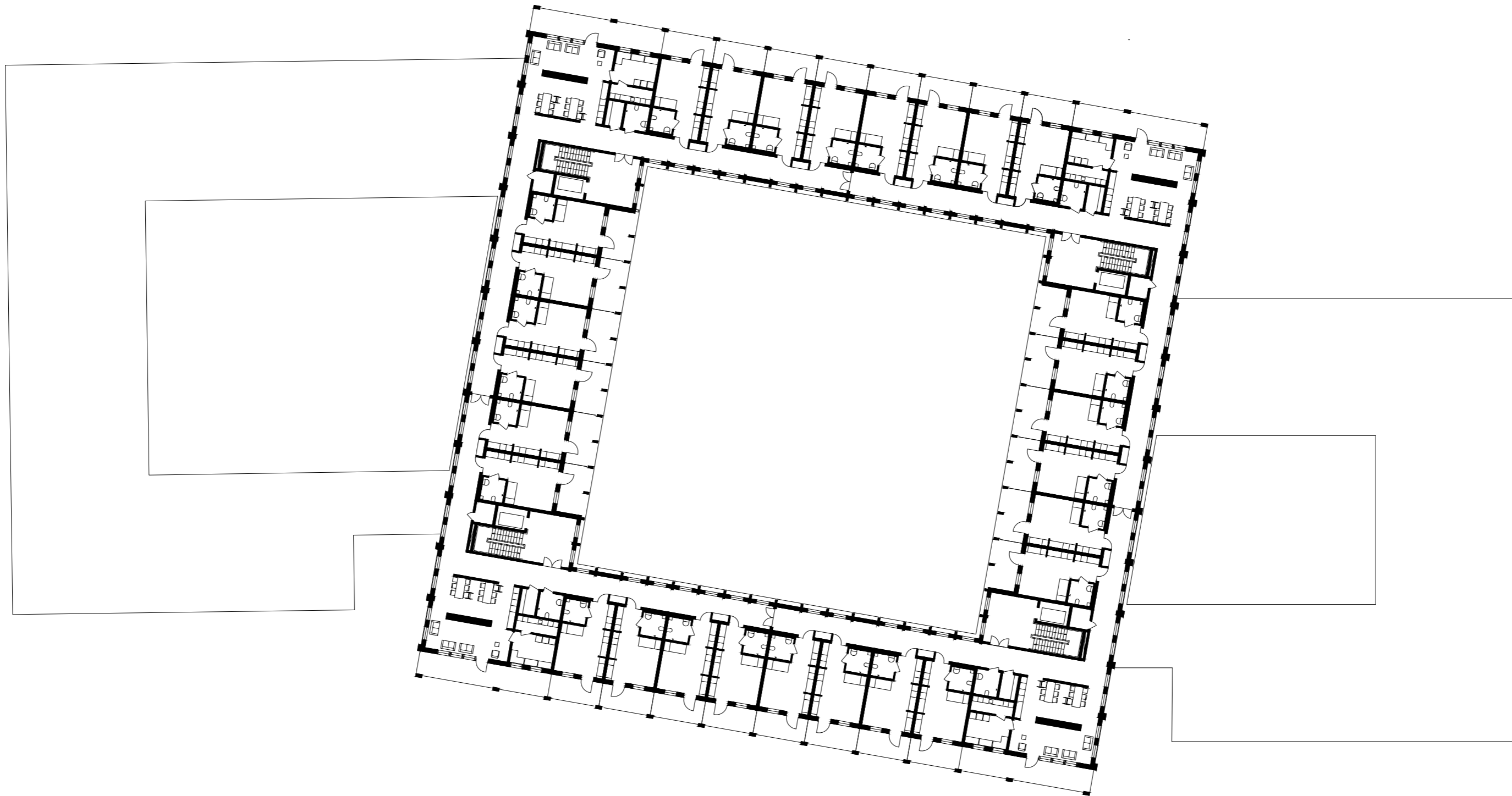
Floorplan Second Floor | Scale 1:500



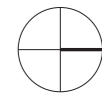
0 50



Floorplan Third Floor | Scale 1:400



0 50



Floorplan Fourth Floor | Scale 1:400

Corridors

When you step out of your apartment you meet a light corridor that leads you to a place full of people. You hear familiar voices, smell the fireplace and you find a visual contact with the greenery of the courtyards. The corridor is a semi private room that connects the apartment to the common area and it provides a private entrance to your apartment. They offer the possibility to enter your apartment without passing through the common space. The corridors also works as the main connections for the staff inside the building.

Sustainability and material

The structure is a combination of wooden walls and pillar beams system. What the wood brings to this project is beyond all its sustainable qualities. Wood has a warmth and a tactitlily that we believe is important to bring down the scale of this large building. In one way the indoor tree in the entrance and the fireplace are also parts of the wood concept but in other forms.

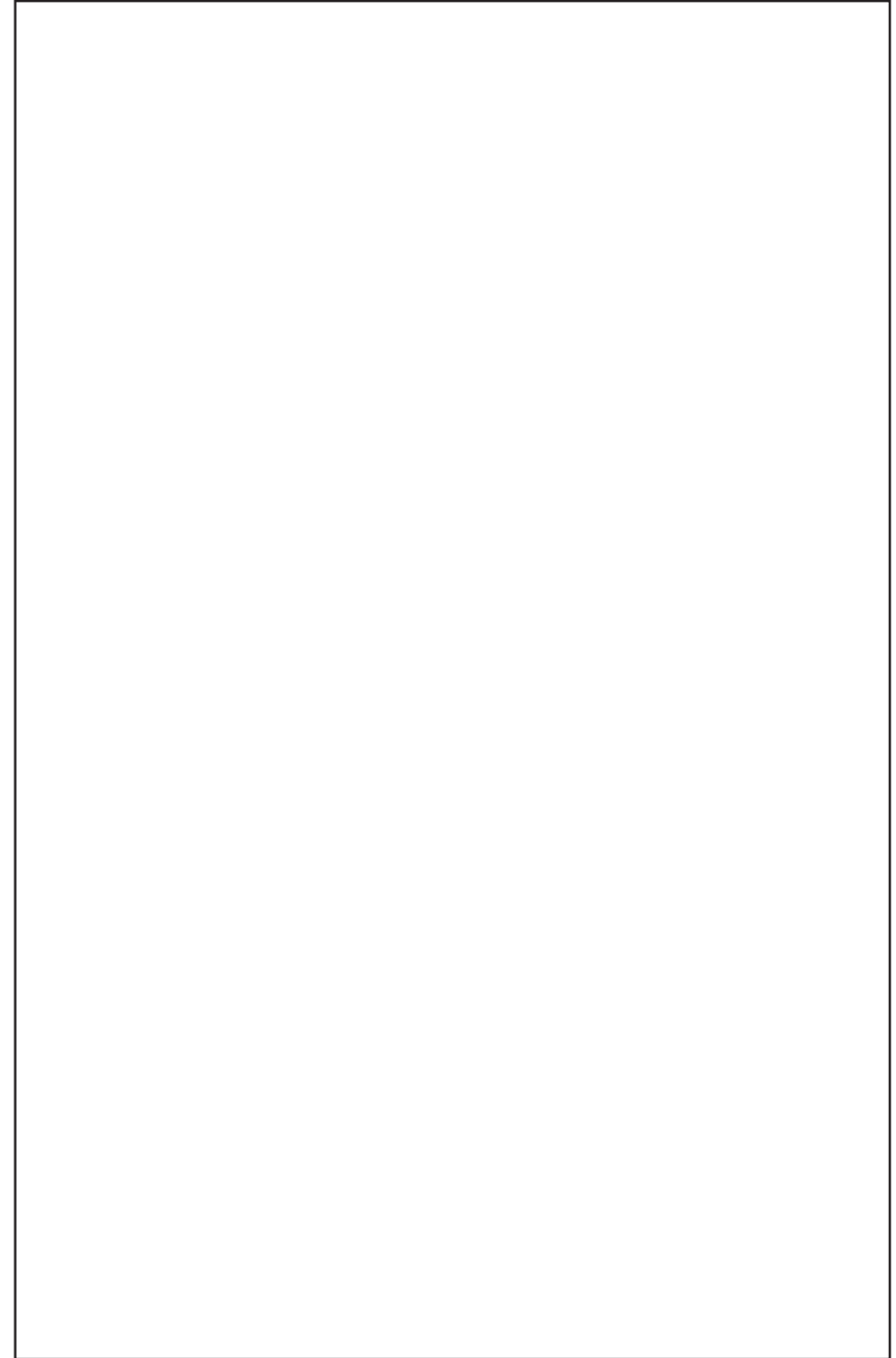
Facades

The facades is a layer covering the whole building. A layer of deep balconies that creates a depth and a distance to the building. A layer that keeps the residents safe from direct insight. The wooden structure is the main characteristics of the facades as a structural element and a design element. The three buildings are seperated with three different yet similar designs. The central building is the main building. With its larger scale and arcade this building invites visitors from the outside. In contrast with the heavy pillars the main building has a carefully detailed railing with a light circular pattern. The two lower buildings are more modest in their design, the pillars are thinner and the railing simpler than in the main building. These are also pulled back from the street to protect the residents that lives on the first floor.



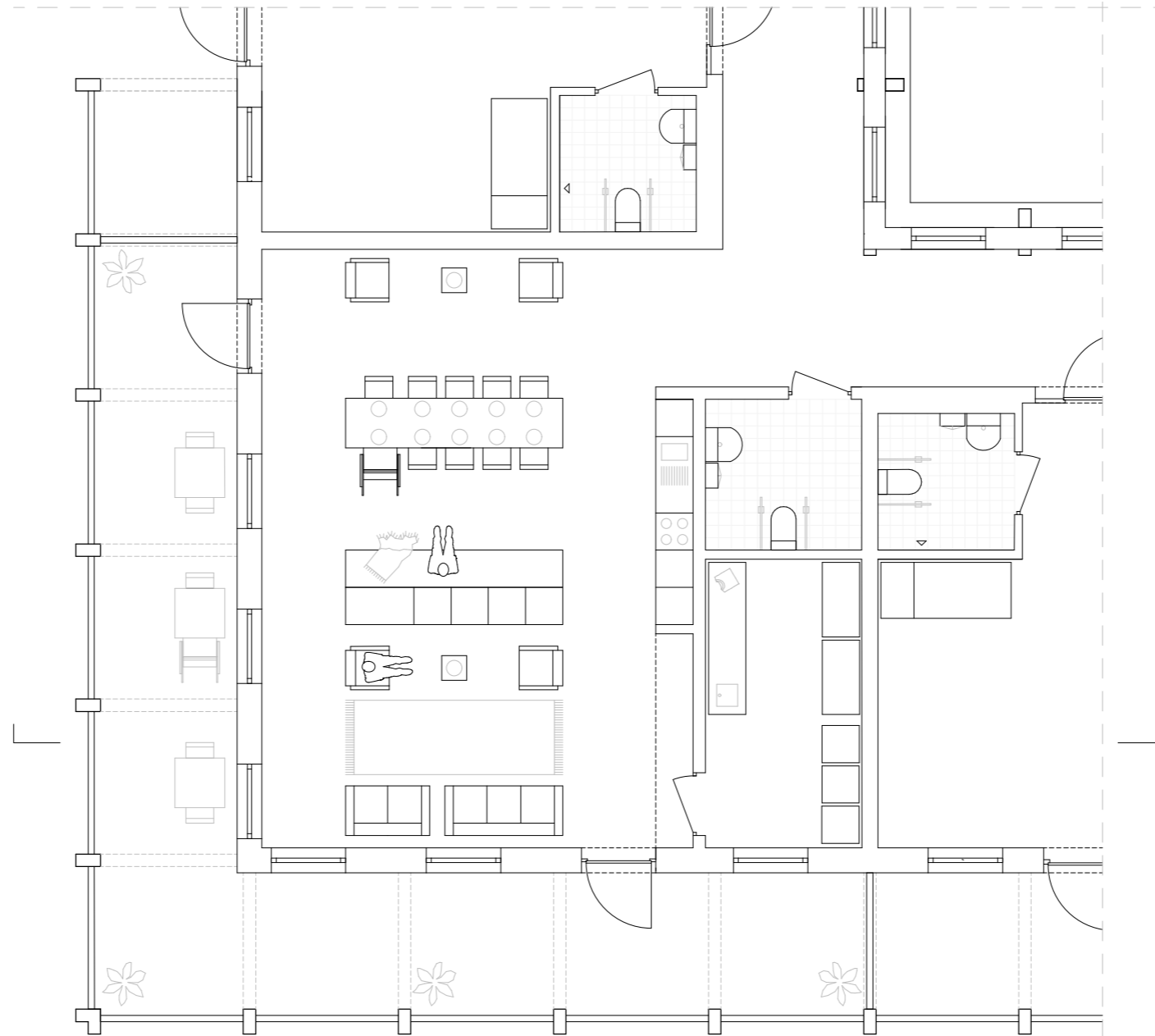
Common areas

When you enter the common area the first thing that you see is a fireplace, the central part of every common room. The fireplace is a gathering place and a symbol of home. It activates our senses, with its scent, visual play and heat. The common area is divided by the fire to provide different rooms for different activities and needs. With the built-in functions on one side and a clear connection to the doors to the outside, the rooms becomes understandable and easy to overview. The common areas also have a big balcony where you can be outside those times when you don't have the energy to go down to the courtyards.



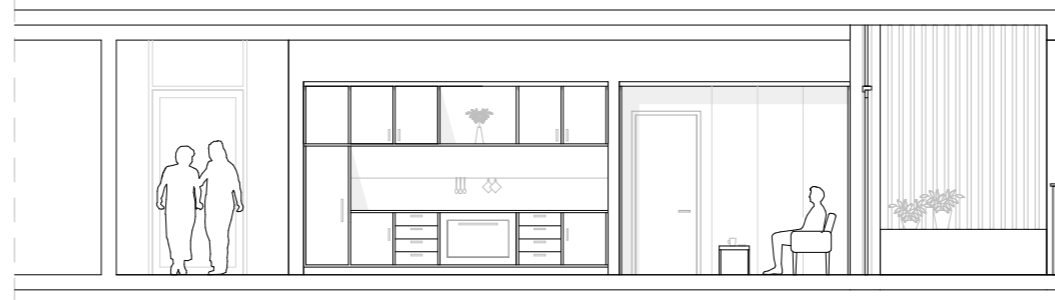


Sectional View Common Area Type 1 | Scale 1:100

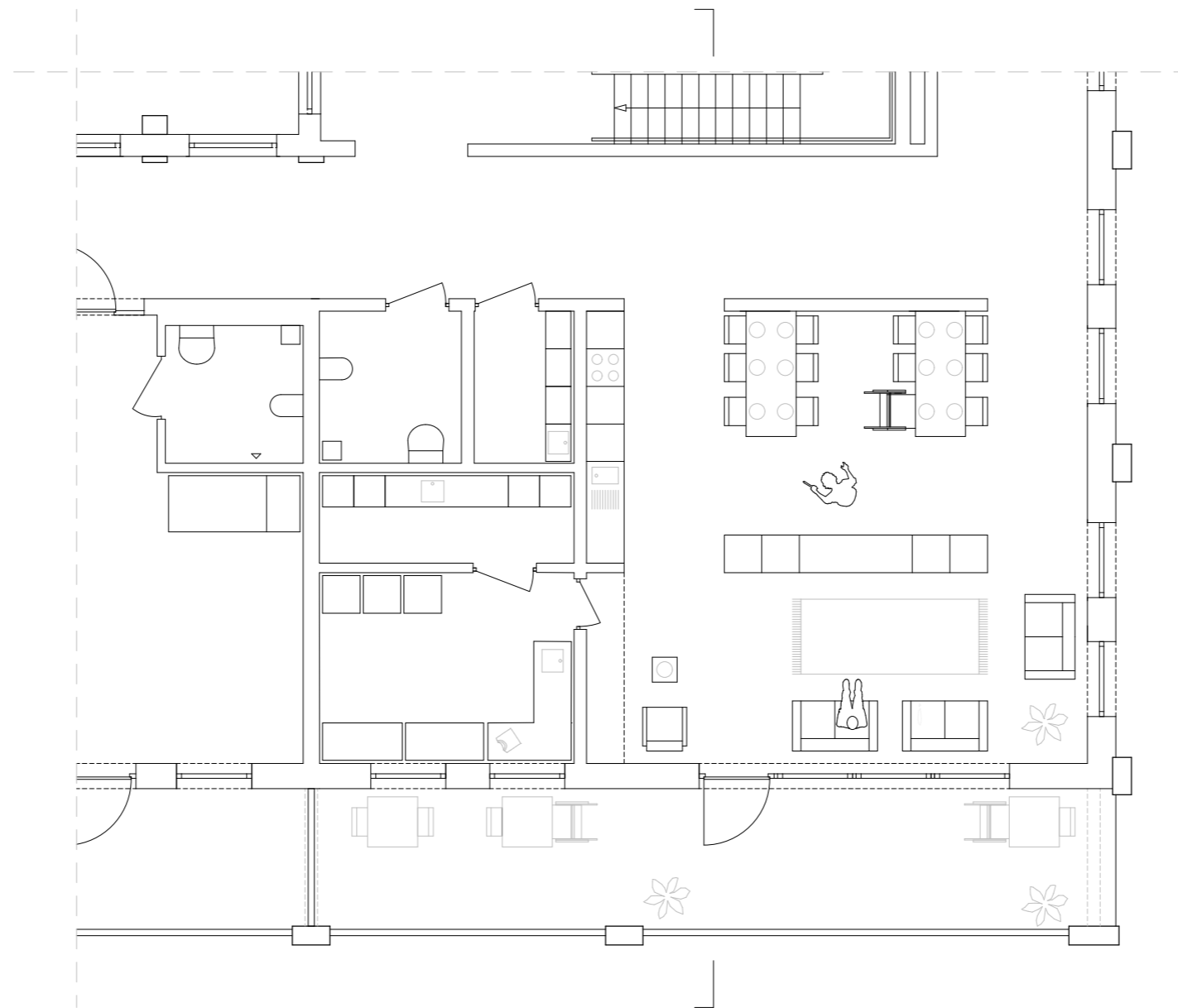


Floorplan Common Area Type 1 | Scale 1:100

0 2m



Sectional View Common Area Type 2 | Scale 1:100



Floorplan Common Area Type 2 | Scale 1:100

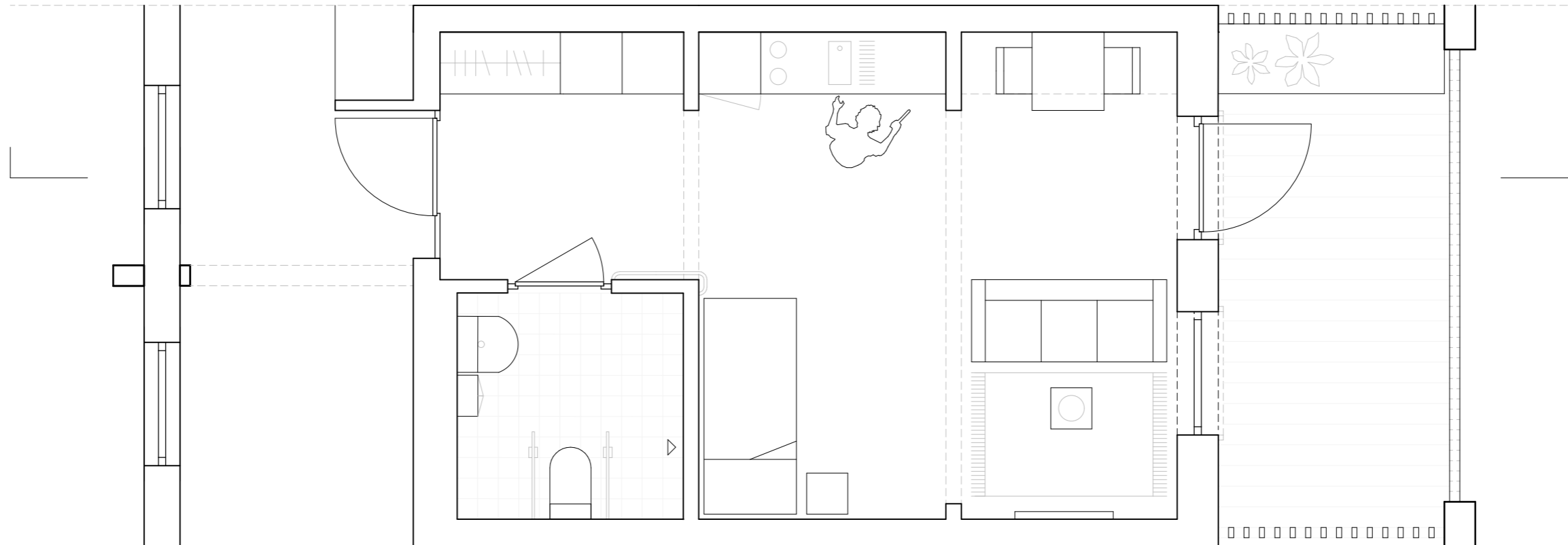




Apartment



Sectional View Apartment | Scale 1:50

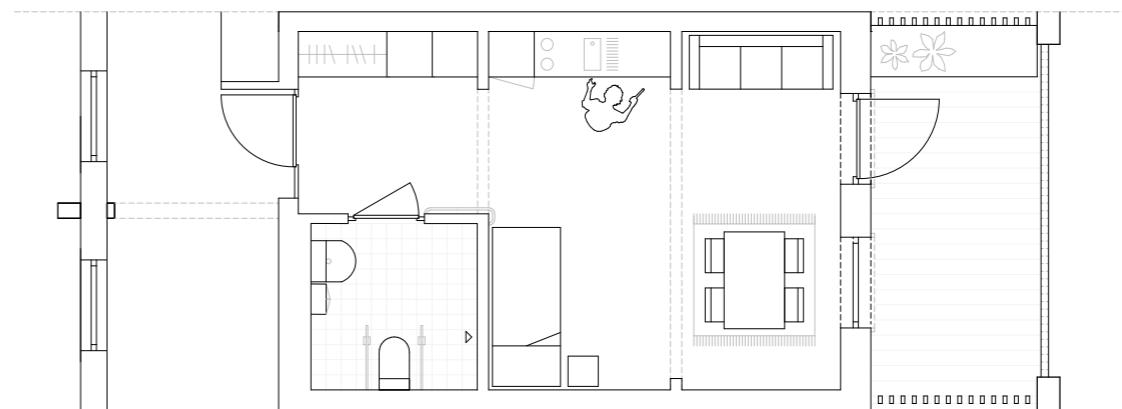
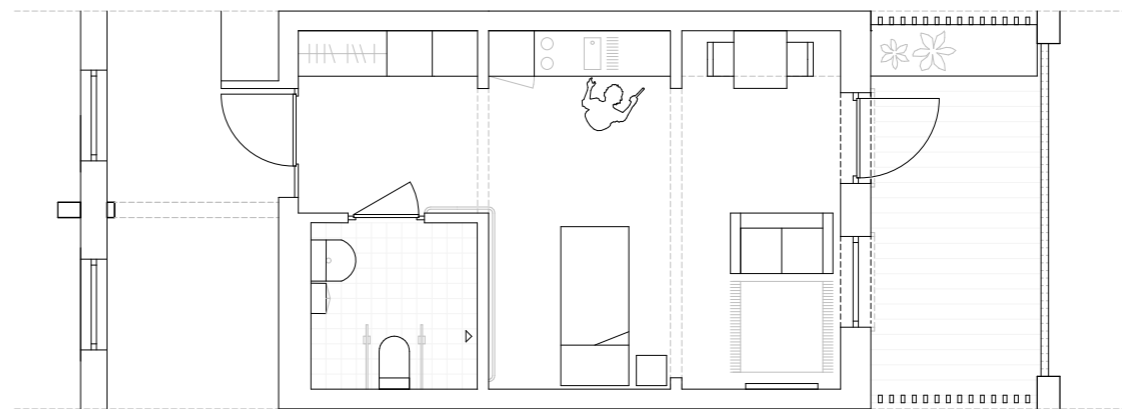
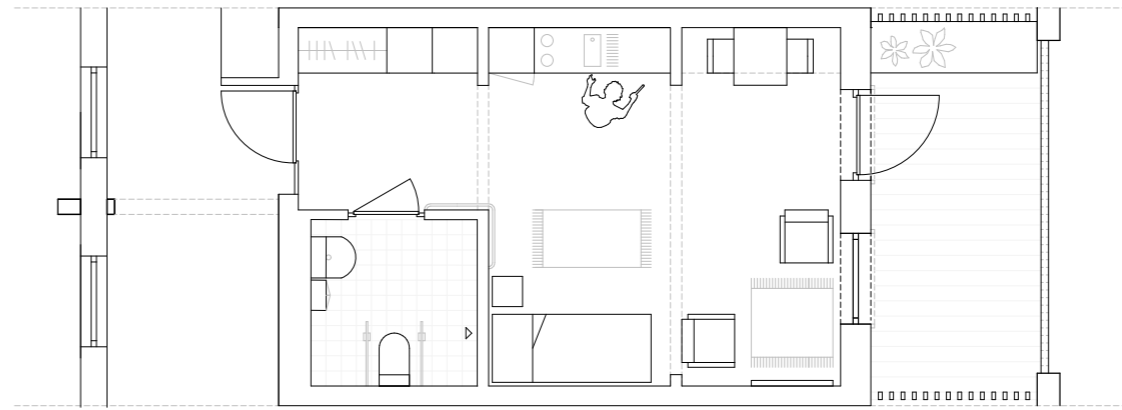


Floorplan Apartment | Furnishing Variation 1 | Scale 1:50

Apartment

When you enter the apartment you recognize the pillars and beams in wood that appears in already in the entrance hall. The apartment talks the same language as the whole building, with the wooden structure as a common thread. These beams and pillars also divides the apartment into tree spaces, without adding walls that makes it dark and crowded. The deep balcony creates a fourth space and a final layer of a private outdoor space. The different zones in the apartment are interconnected by the functionwall, an inbuilt furniture that contains a kitchen and a lot of storage. This built in furniture also makes it possible to allow the rest of the apartment to be a flexible space for you to furnish in your own personal way.

With concept of having a apartment building it becomes important to have a proper hall, with room for outdoor clothes and a sitting possibility to sit down when putting on the shoes. Having the toilet door facing the hallway instead of the room where you might have visitors also emphasises the feeling of this not being a patient room in a hospital but a apartment in a housing complex.



0 2m

Residential Healthcare - Housing for Seniors | AUT164
Autumn 2018

Hannah Delvert
Frida Björklund
Elise Wicklein