

TWO PEAS IN A POD



Final Presentation

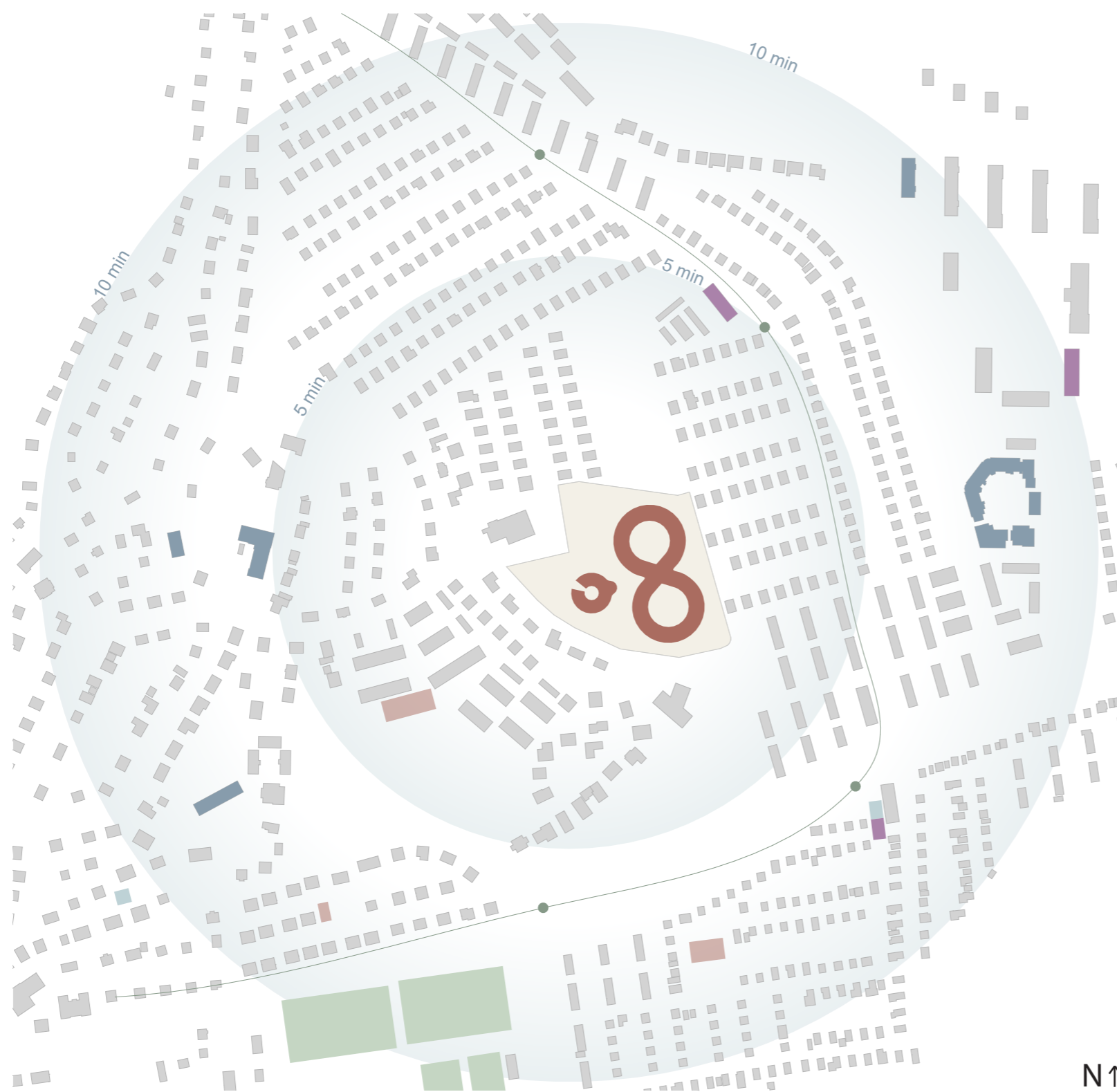
Group 1

Eylül Aslan

Emil Westlin

Lovisa Söderström Larsson

PROXIMITY DIAGRAM




- Project plot
- Schools/Preschool
- Restaurants
- Playground
- Hairdresser
- Sports facility
- Bus stops / route

SITE CONDITIONS

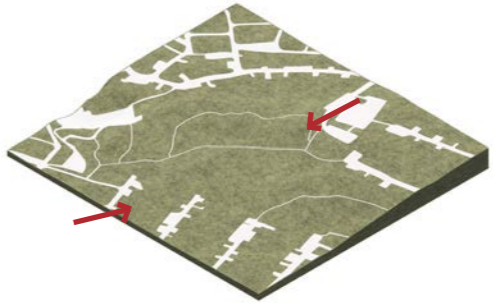
Topography

The site is sloping around 15 meters from lowest to highest point.




Connections

We have identified two potential access points, one at a nearby kindergarten and one at the church.




Green Areas

The site is filled with vegetation throughout the slope.



Context

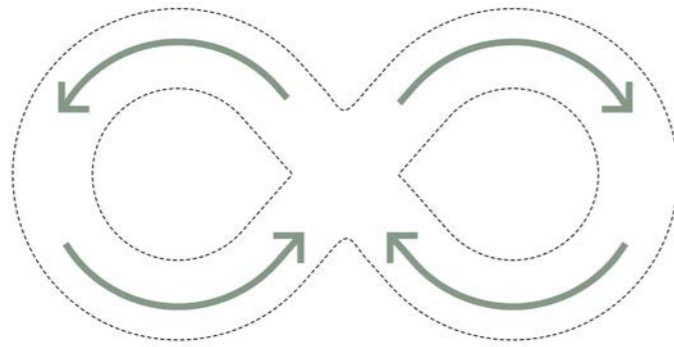
In the suburban context we find an array of villas in rows, almost exclusively with gable roof.



Sustainability

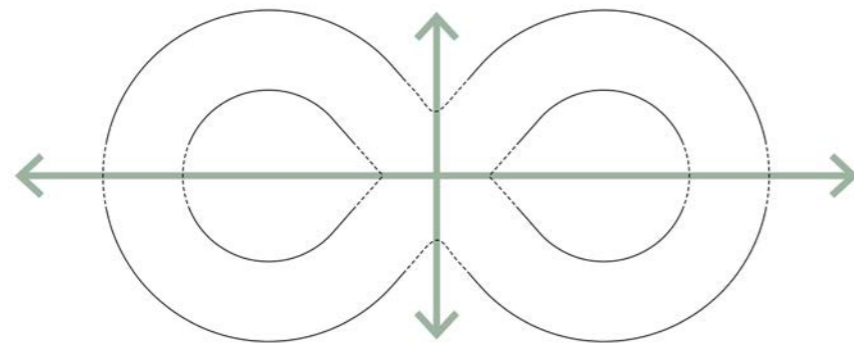
The project group made multipurpose decisions. To fulfil goal 11 a distance is made from concrete, except the basement, to design for wood instead. It was decided by the project group from the start. The wood is to promote the health perspective in goal 3 (from knowing it can make people recover), together with the landscape design. In goal 15 we can count in the landscape design. Equality design, as goal 5 and 10, is part of the facility, so we have made sure our concept responds to it.

CONCEPT



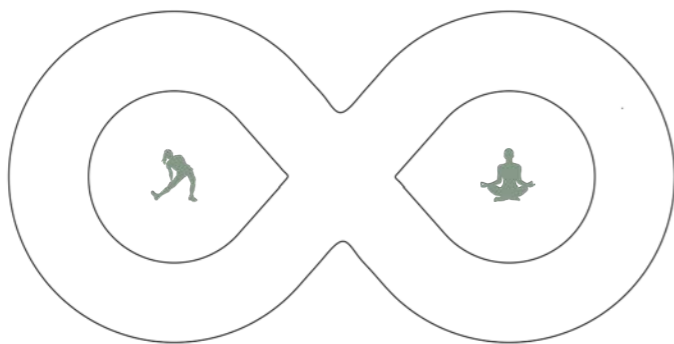
CIRCULATION

- No dead ends
- Equality in access
- One community



CONNECTION

- Sightlines through building
- Geometry leads you through building
- Multifaceted connection to nature



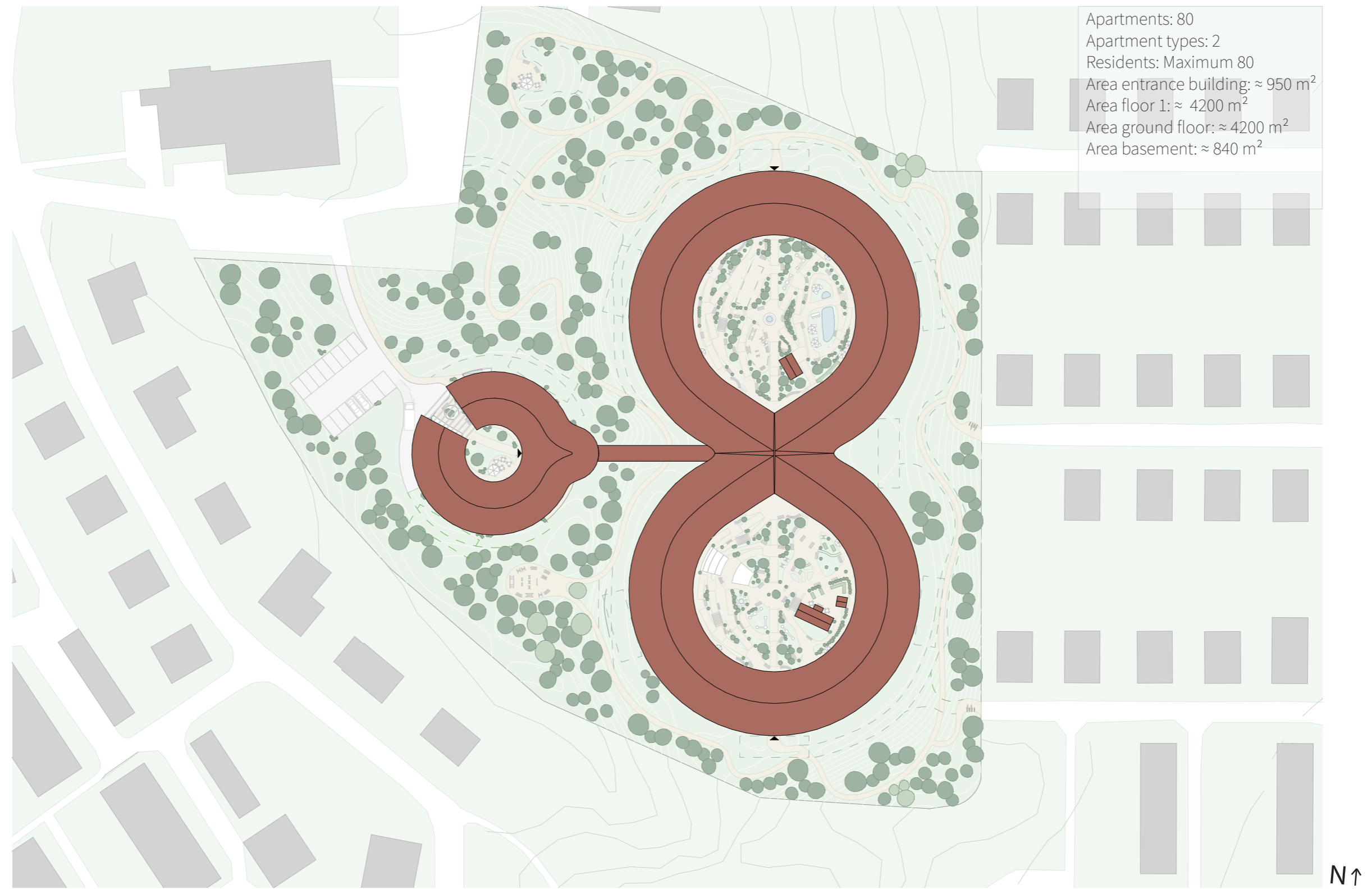
STIMULATION

- Space for socialization and solitude
- Community integration
- Engage the senses
- Sense of independence

HEIGHT DIAGRAM

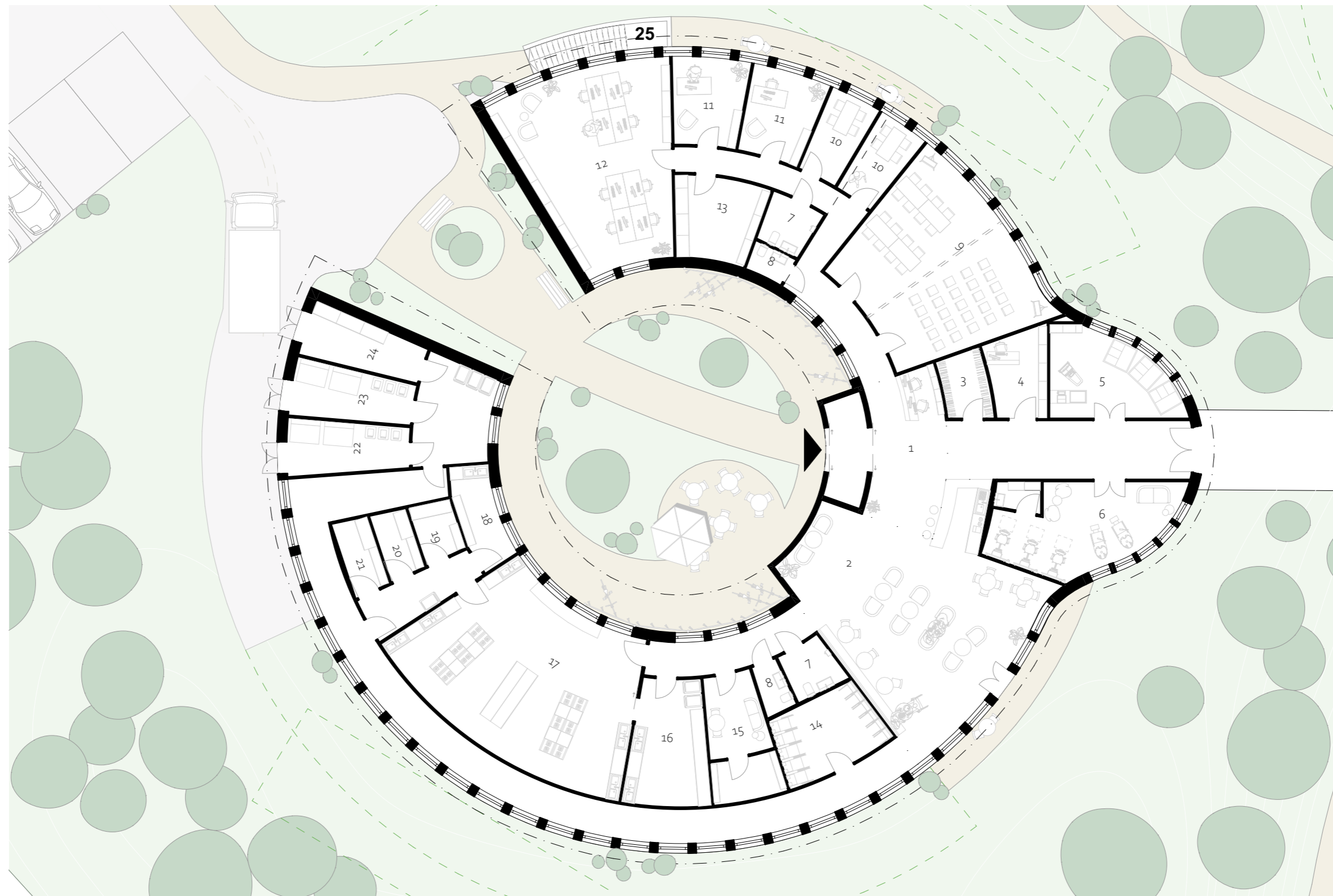


SITEPLAN



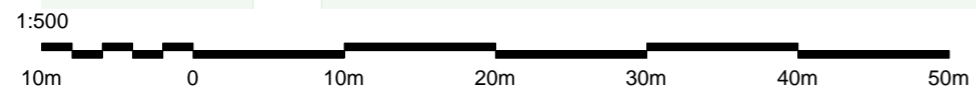
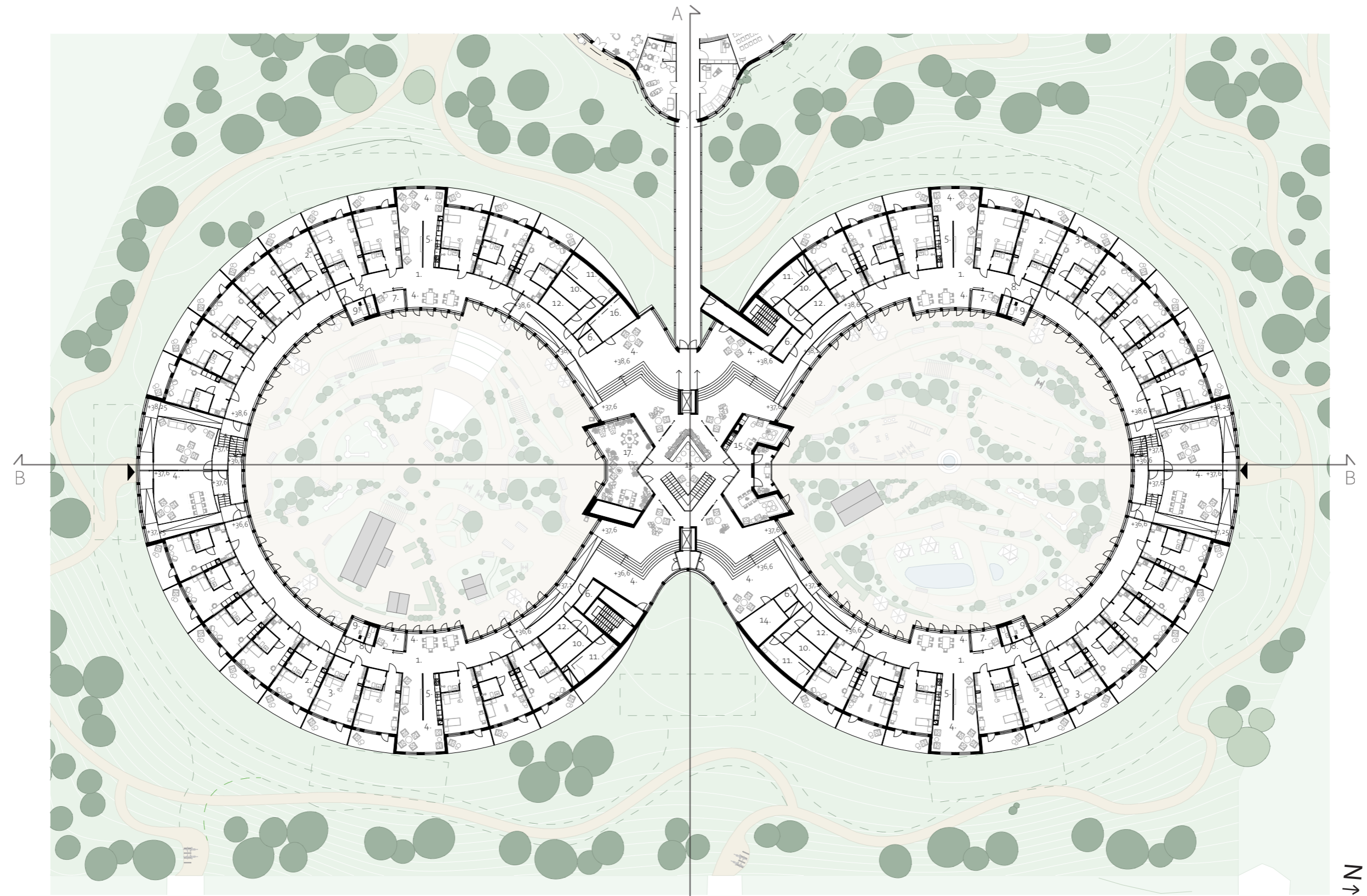
The southern landscaping in the "eight" is in collaboration with the kindergarten and a cafeteria and hair salon welcomes everyone. The organisation we go for is not ordinary and implies new qualities.

ENTRANCE BUILDING



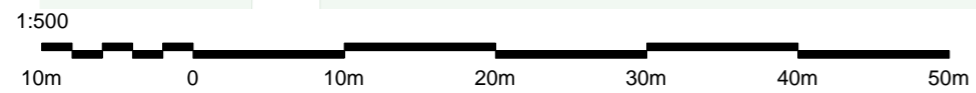
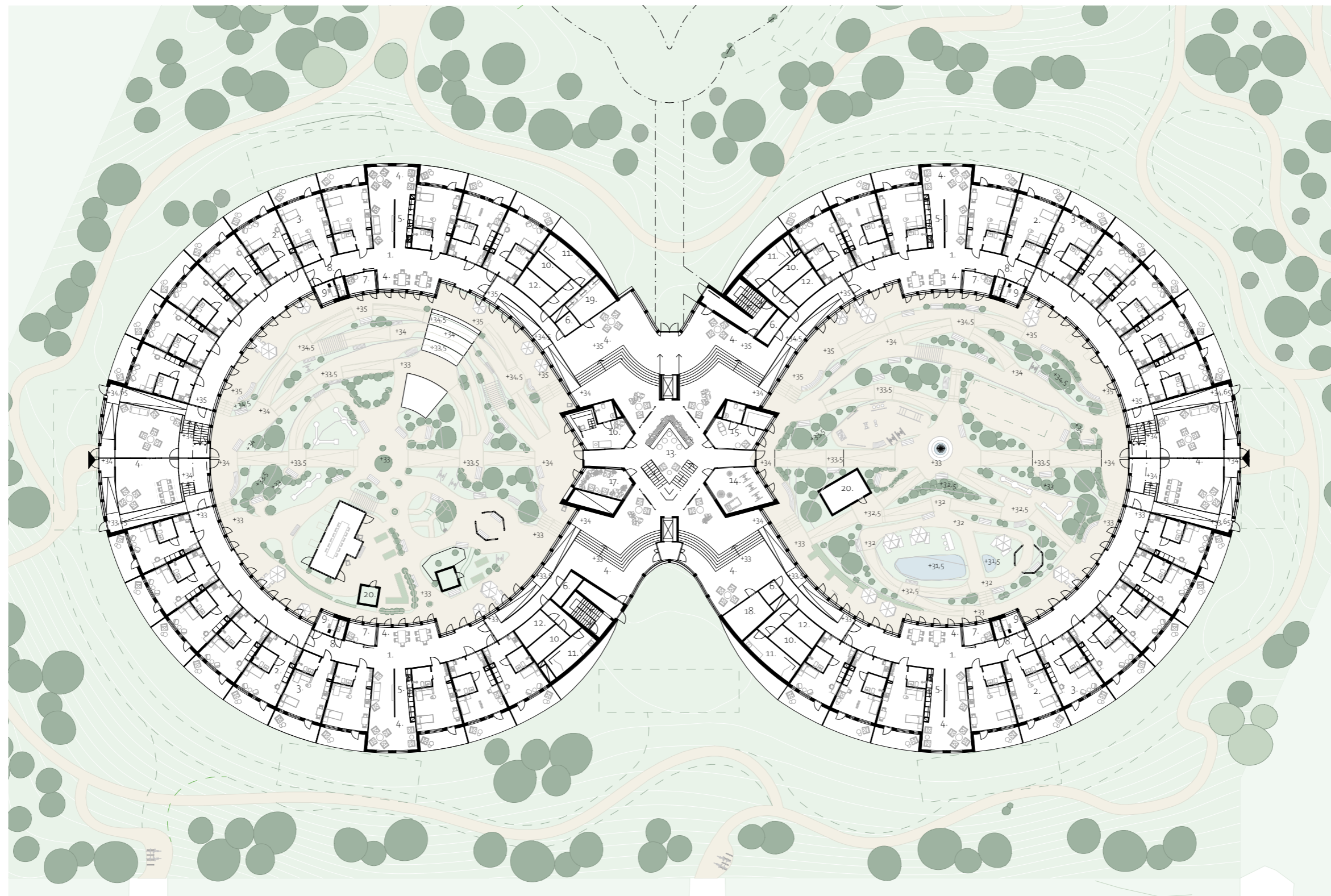
- | | | | |
|--------------------|---------------------|-----------------|----------------------------------|
| 1. Foyer | 8. WC | 15. Staff Room | 22. Waste Restaurant |
| 2. Cafe/Restaurant | 9. Conference Room | 16. Dish Room | 23. Waste AL |
| 3. Garderobe | 10. Meeting Room | 17. Kitchen | 24. Delivery |
| 4. Shop | 11. Office | 18. Preperation | 25. Basement: Technical rooms |
| 5. Shop | 12. Open Office | 19. Storage | |
| 6. Hairdresser | 13. Drug Storage | 20. Freezer | |
| 7. HWC | 14. Outdoor Storage | 21. Storage | |

FIRST FLOOR



- | | | |
|------------------------|--------------------------------|------------------|
| 1. Unit | 8. Staff Toilet Unit | 15. Staff Room |
| 2. Apartment A | 9. Staff Room Unit | 16. Janitor |
| 3. Apartment B | 10. Desinfection/Waste Unit | 17. Wintergarden |
| 4. Common Area Unit | 11. Laundry for Unit | |
| 5. Kitchen Unit | 12. Storage for Unit | |
| 6. Cleaning Room Unit | 13. Meeting Area between Units | |
| 7. Common Terrace Unit | 14. Storage Aid | |

GROUND FLOOR



- | | | |
|------------------------|---------------------------------|----------------------|
| 1. Unit | 8. Staff Toilet | 15. Flexiroom Area |
| 2. Apartment A | 9. Staff Room Unit | 16. Relax |
| 3. Apartment B | 10. Desinfection/Waste for unit | 17. Wintergarden |
| 4. Common Area Unit | 11. Laundry for Unit | 18. General Storage |
| 5. Kitchen Unit | 12. Storage for Unit | 19. Cleaning Central |
| 6. Cleaning Room Unit | 13. Meeting Area Between Units | 20. Storage Garden |
| 7. Common Terrace Unit | 14. Gym | |



CIRCULATION



HANS - RESIDENT

1. Apartment - 2. Common area in unit - 3. Circulates - 4. Garden - 5. Common area - 6. Apartment



MALIN - CARETAKER

1. Enter building - 2. Dressing room - 3. Unit - 4. Helpin out in the apartment - 5. Garden - 6. Lunch in staff room - 7. Unit - 8. Dressing room before going home



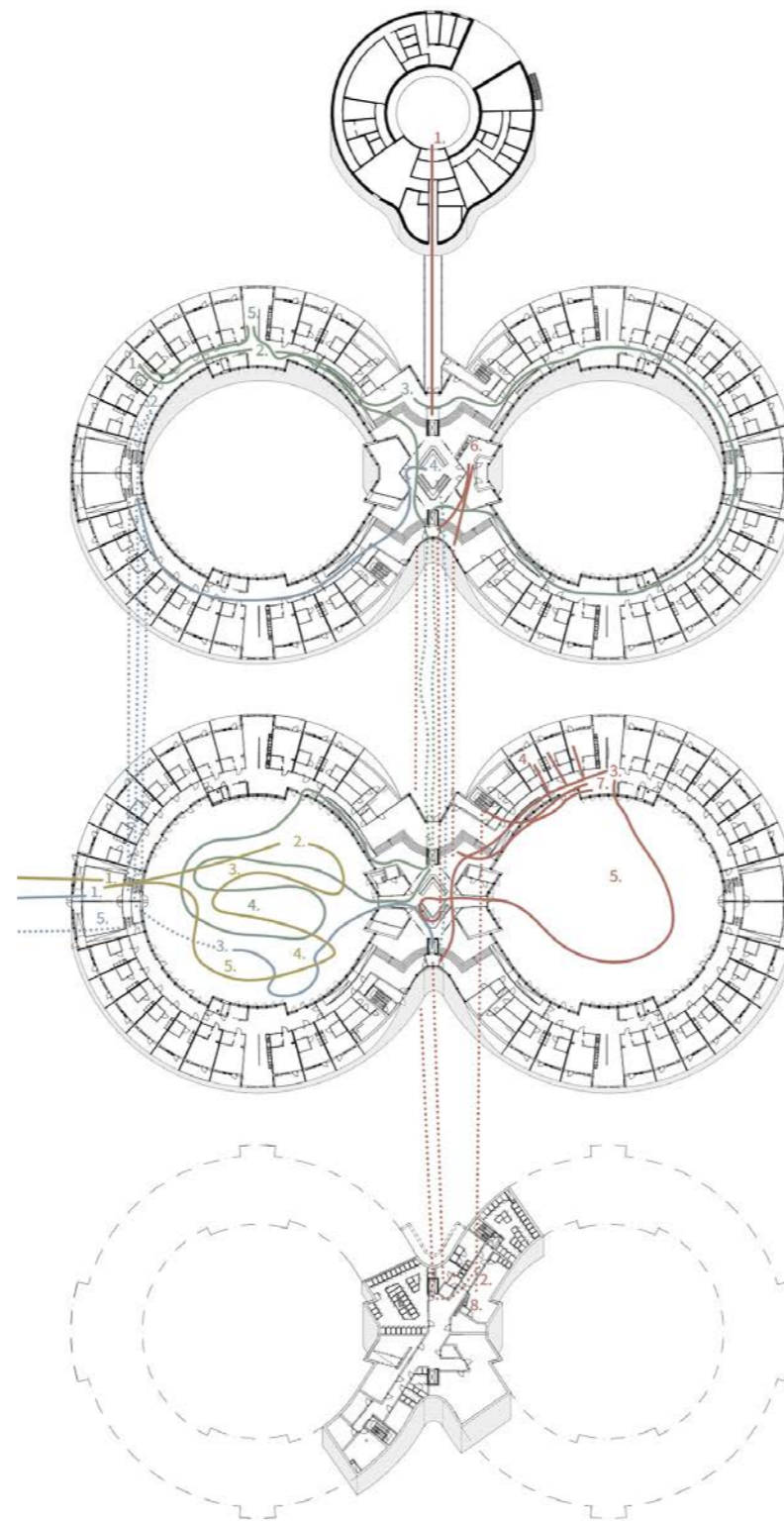
STEFAN - VISITOR TO HANS

1. Entrance common area unit - 2. Visits Hans apartment - 3. garden - 4. Meeting area between units - 5. Going home








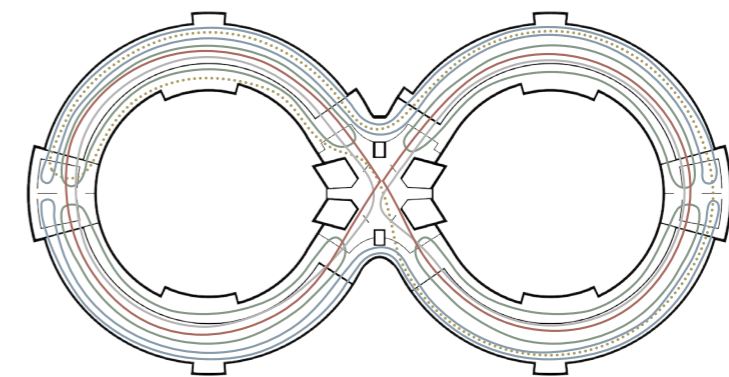
TEO - VISITOR FROM KINDERGARTEN

1. Enter the garden - 2. Watching a theater - 3. Making hot dogs - 4. Playing with rabbits - 5. Gardening



IN CASE OF A PANDEMIC

-  Scenario 1 - Normal situation and free circulation
-  Scenario 2 - Insulation between circles
-  Scenario 3 - Total insulation between units
-  Scenario 4 - Units on same level in insulation
-  Scenario 5 - Three units opened for circulation



Sliding doors are installed where the circles meet and in the outer circles, for closing the bigger area at bigger occasions or to close sections during infection, and still let the healthy circulate freely. If a section is totally closed the plan still prevents dead ends.

UNIT

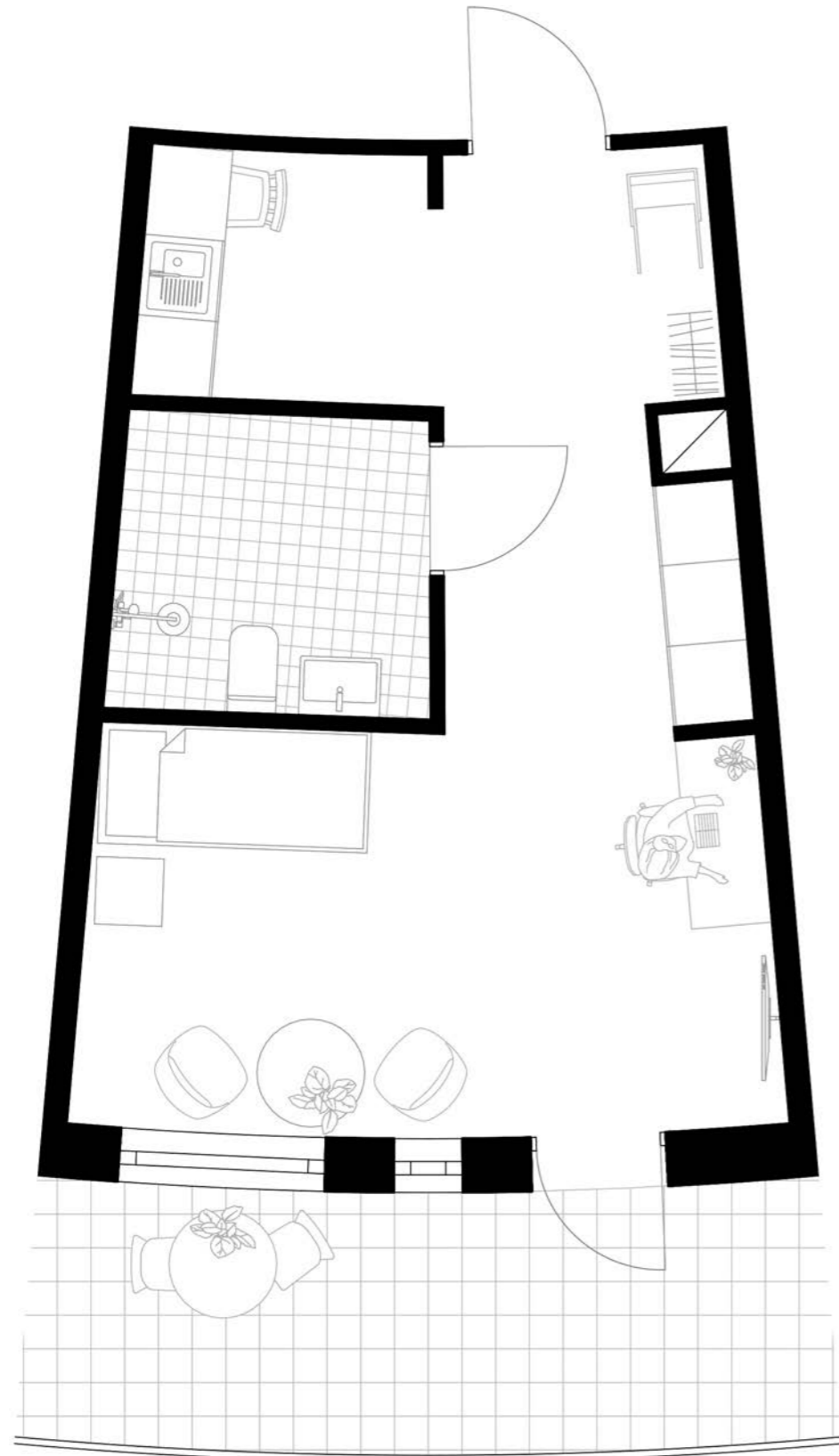


- | | |
|-------------------|------------------------|
| 1. Unit | 8. Staff Toilet |
| 2. Apartment A | 9. Staff Room |
| 3. Apartment B | 10. Desinfection/Waste |
| 4. Common Area | 11. Laundry |
| 5. Kitchen | 12. Storage |
| 6. Cleaning Room | 13. Electricity Shaft |
| 7. Common Terrace | |

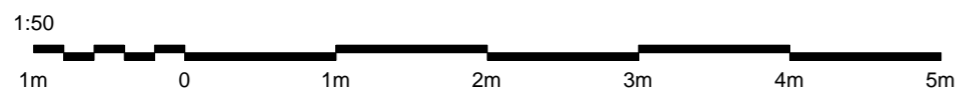
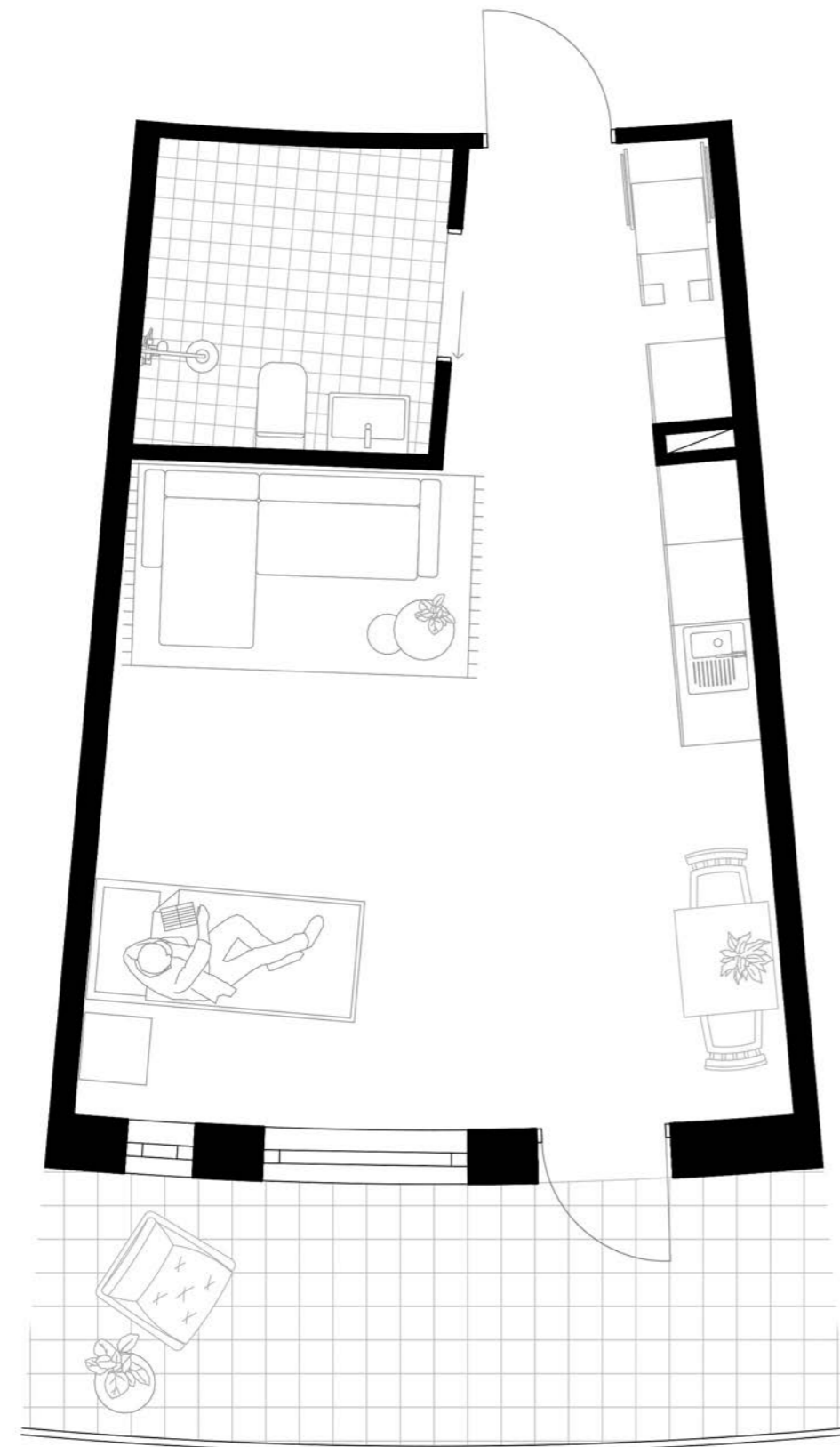
VISUALIZATIONS



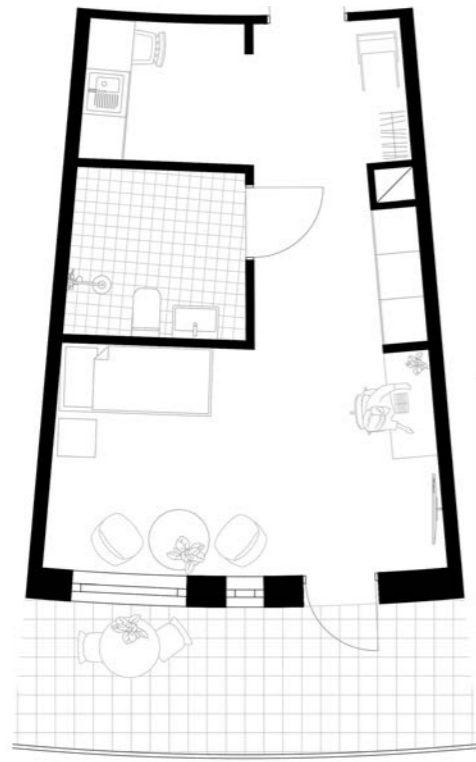
APARTMENT A



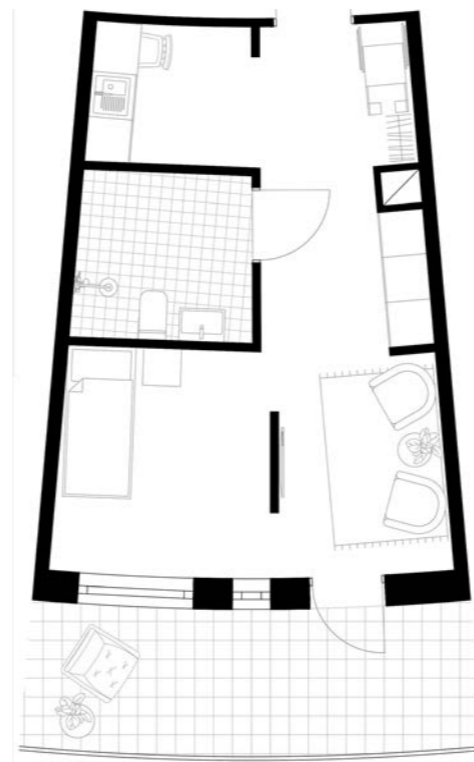
APARTMENT B



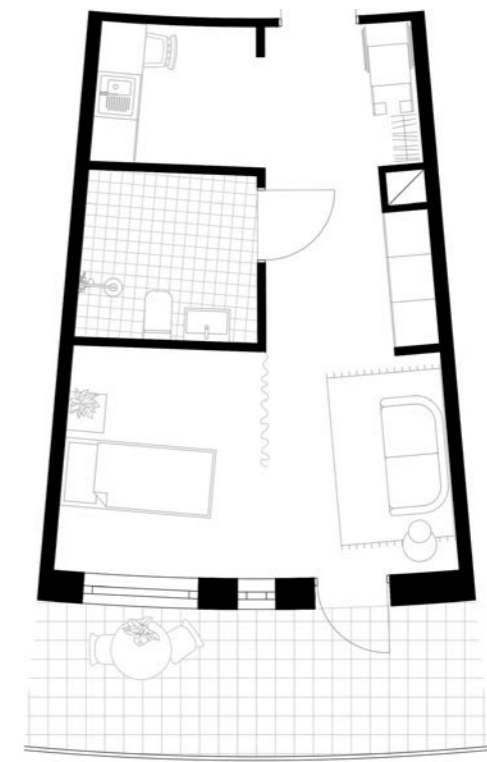
FURNISHMENT VARIATIONS



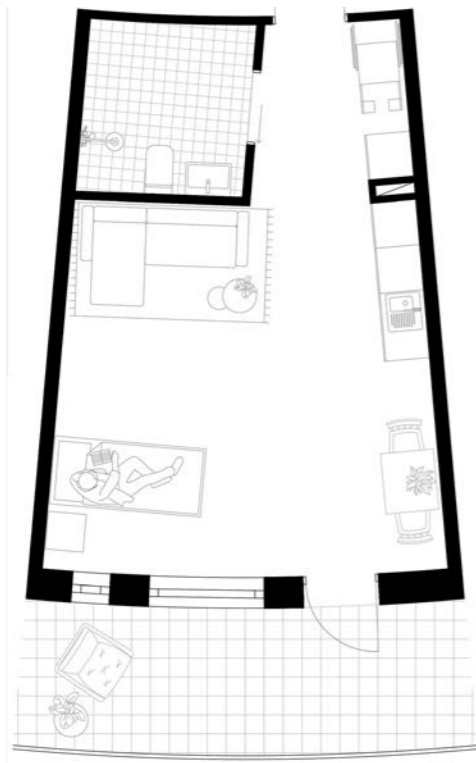
A1



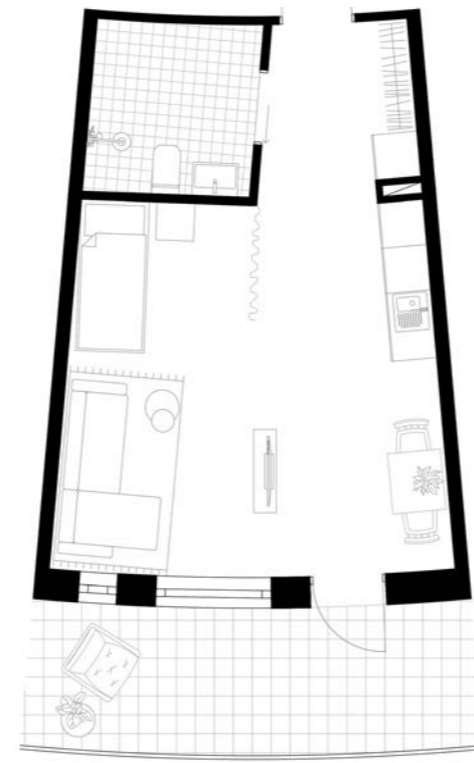
A2



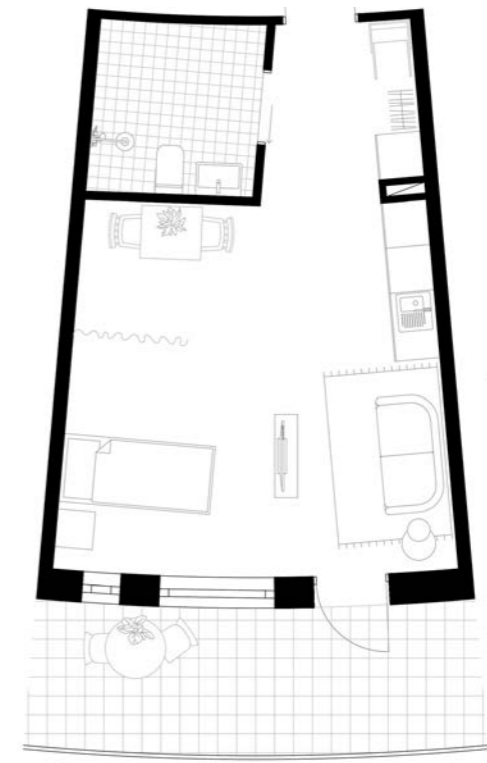
A3



B1



B2

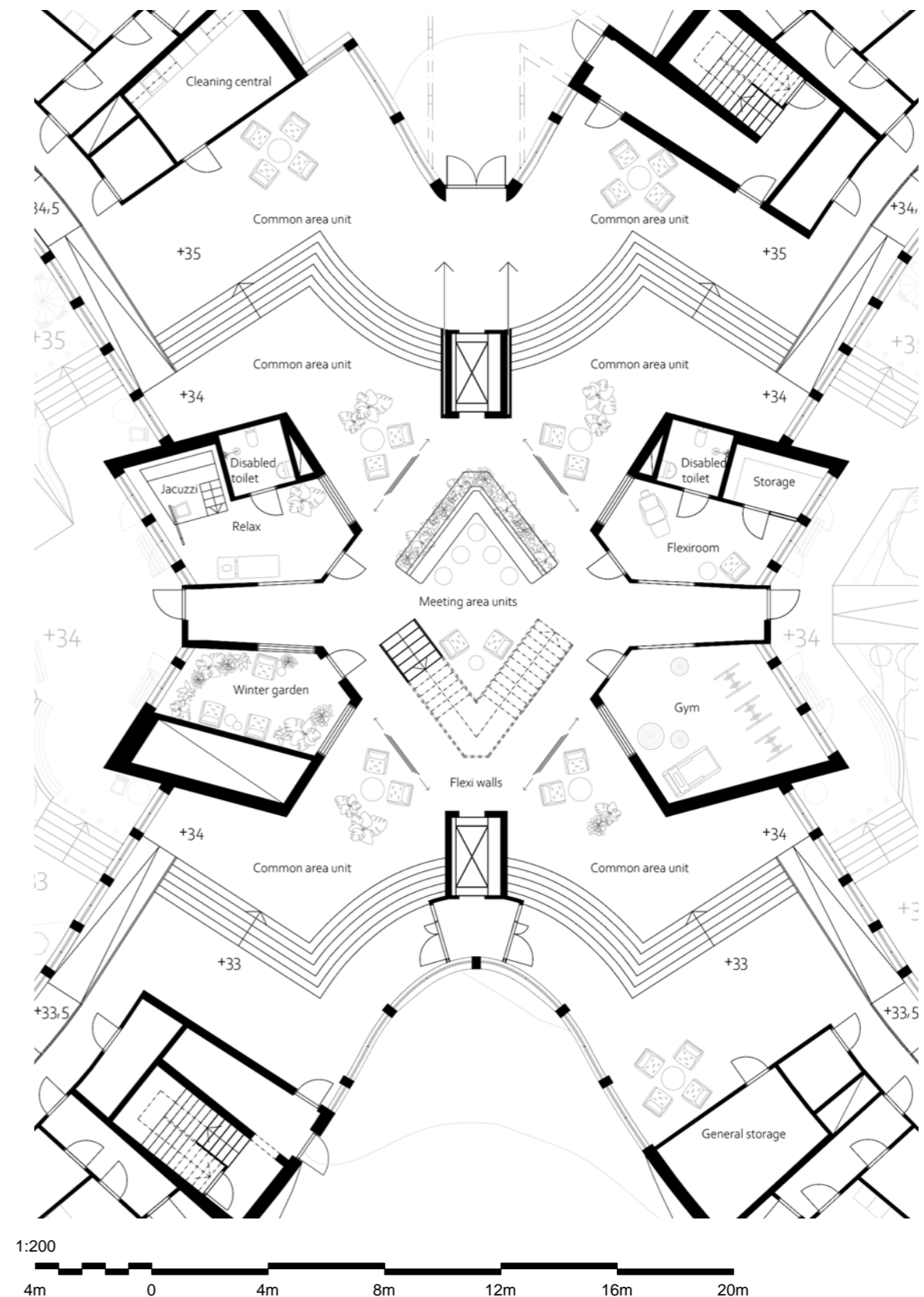


B3

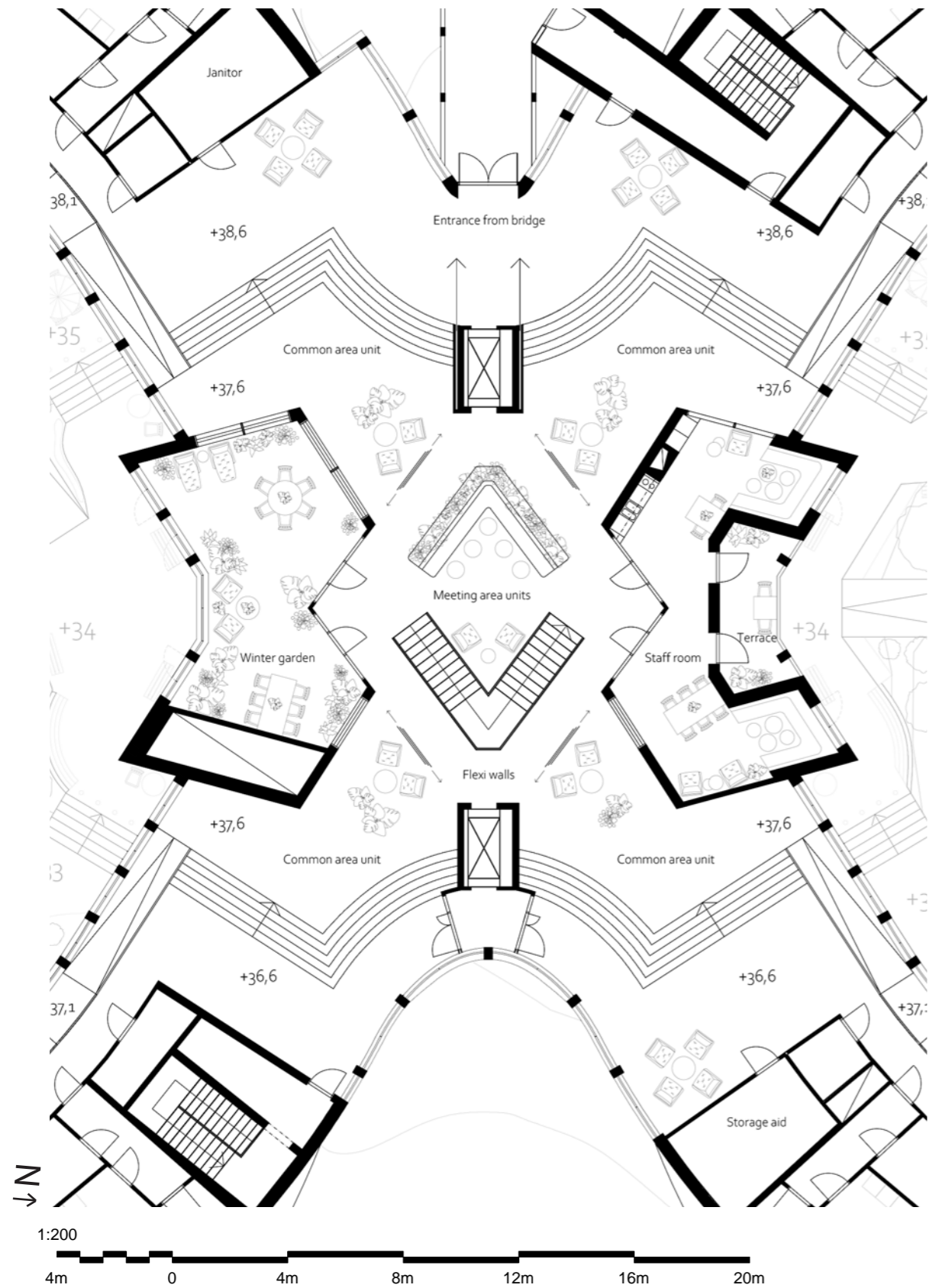
BASEMENT



CENTRAL AREA - GROUND FLOOR



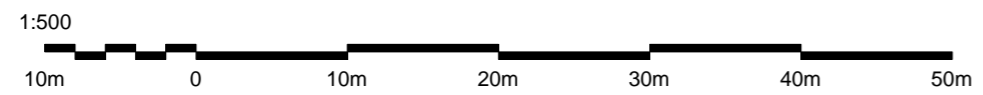
CENTRAL AREA - FIRST FLOOR



SECTION A-A



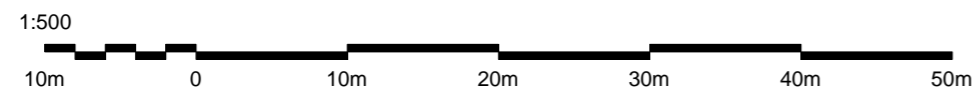
SOUTH FACADE



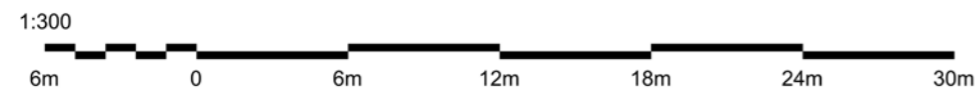
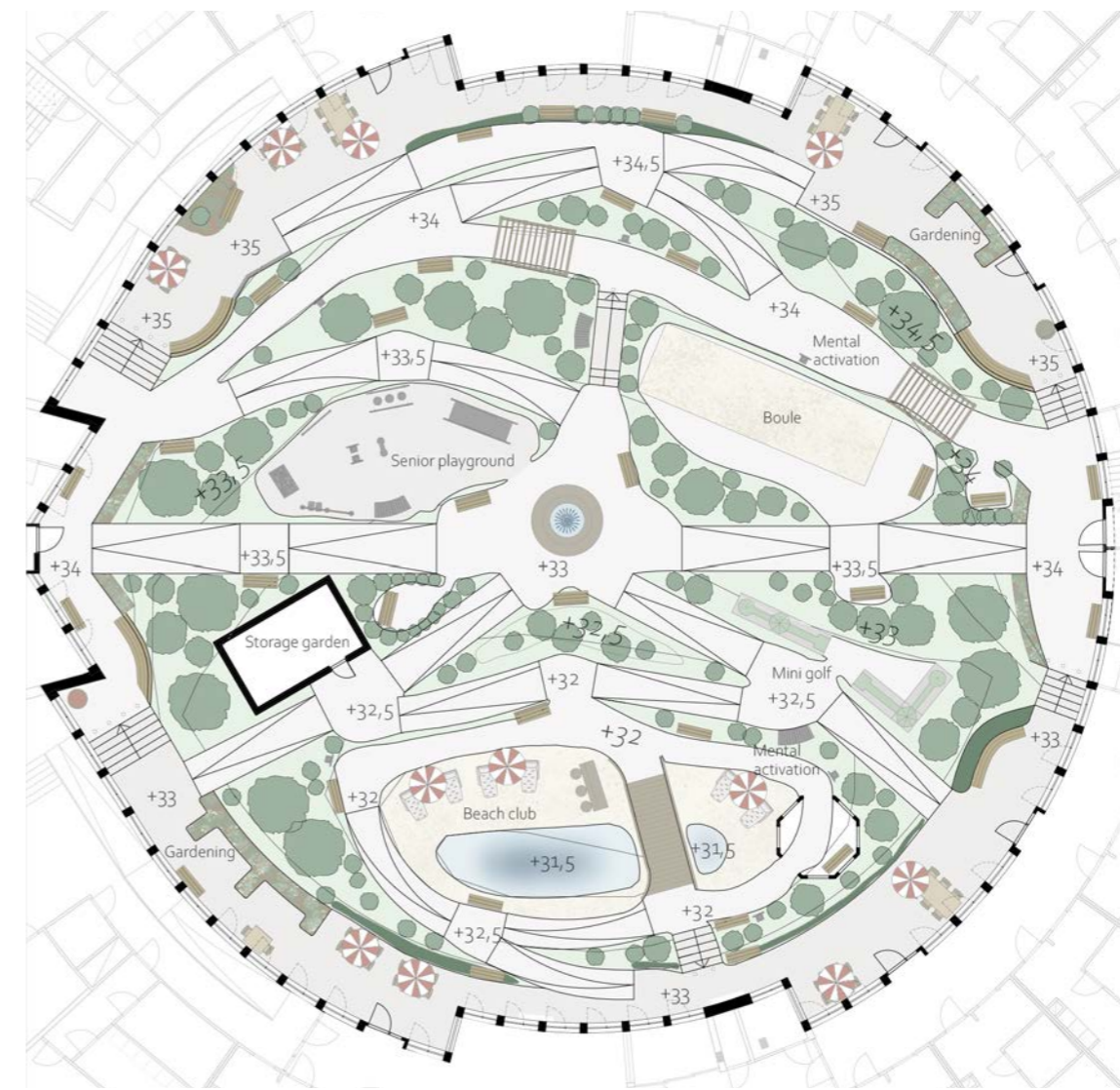
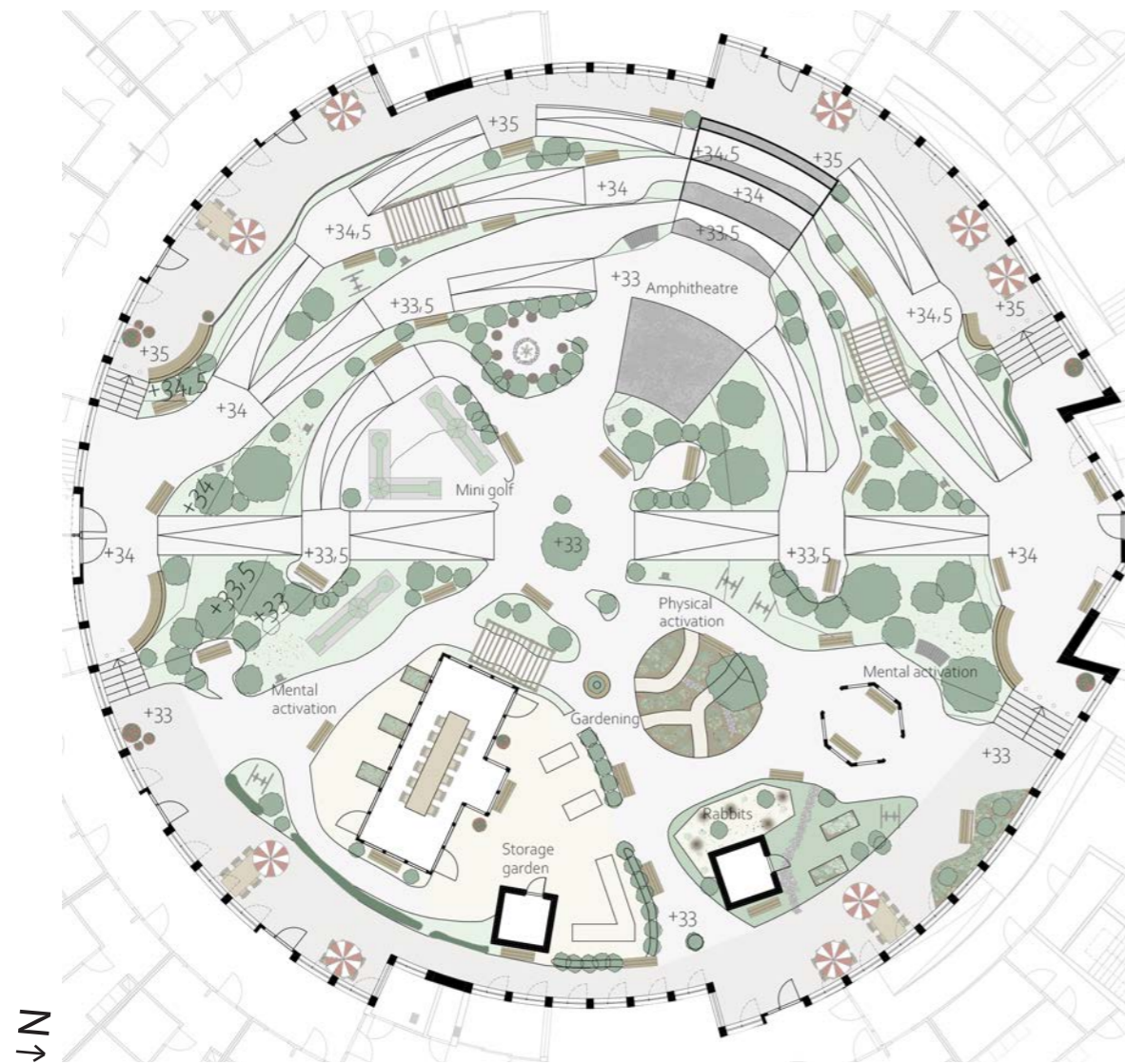
SECTION B-B



EAST FACADE



COURTYARD PROGRAM



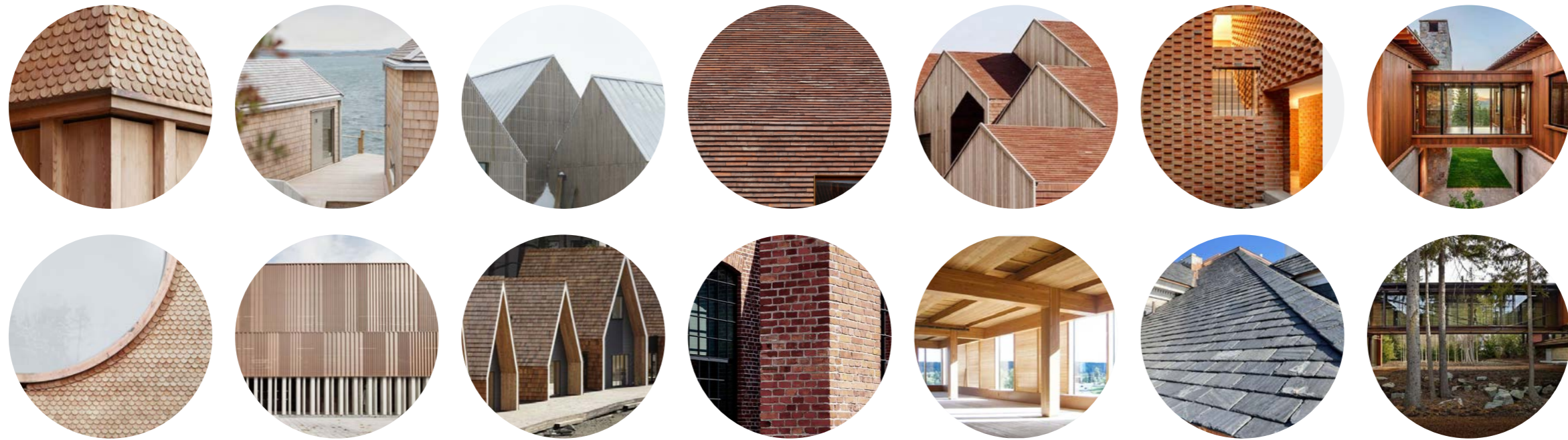
The south one and the north one have an equivalence in tools for activation and recreation. The activation is both for physical and mental purposes. These activation functions are meeting areas everyone can reach thanks to the integrated ramps. Railings and benches facilitates.

The amphitheatre and the farming area are shared with the kindergarten together with the dementia persons, so they can interact.

COURTYARD OVERVIEW



MATERIALITY



FACADE MATERIALS

