

hospice.

"A home providing care for the sick or terminally ill"

AUT 164 / HT 2017

cornelia franzen / cajsja tingdal



what is a hospice?

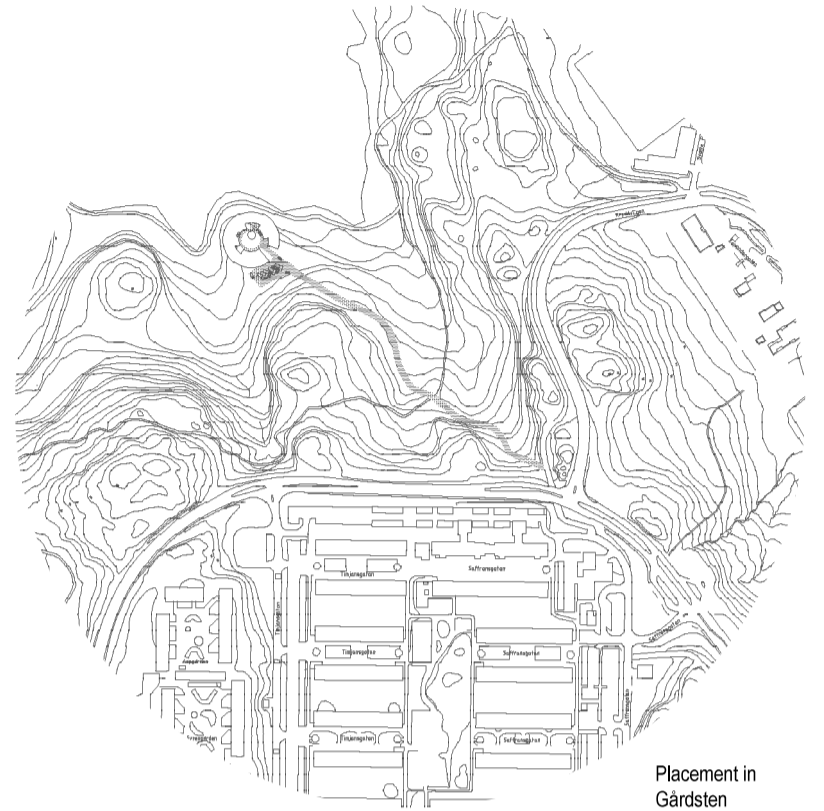
"A home providing care for the sick or terminally ill"

What is a hospice? Deciding on one word that describes what hospice means to us, has helped guiding us in the designprocess, and that word is dignity. By this, we mean that coming to a hospice, where you are going to spend the last time in your life, whether it will be weeks or months, you need to be treated with respected, feel safe and worthy. We want to create spaces that support these thoughts by placing the building close to nature and water, choosing exclusive materials, and having common rooms for different activities to accommodate different personalities.

Gårdsten is located 30 minutes from Gothenburg city centre and 5 minutes away from Angered

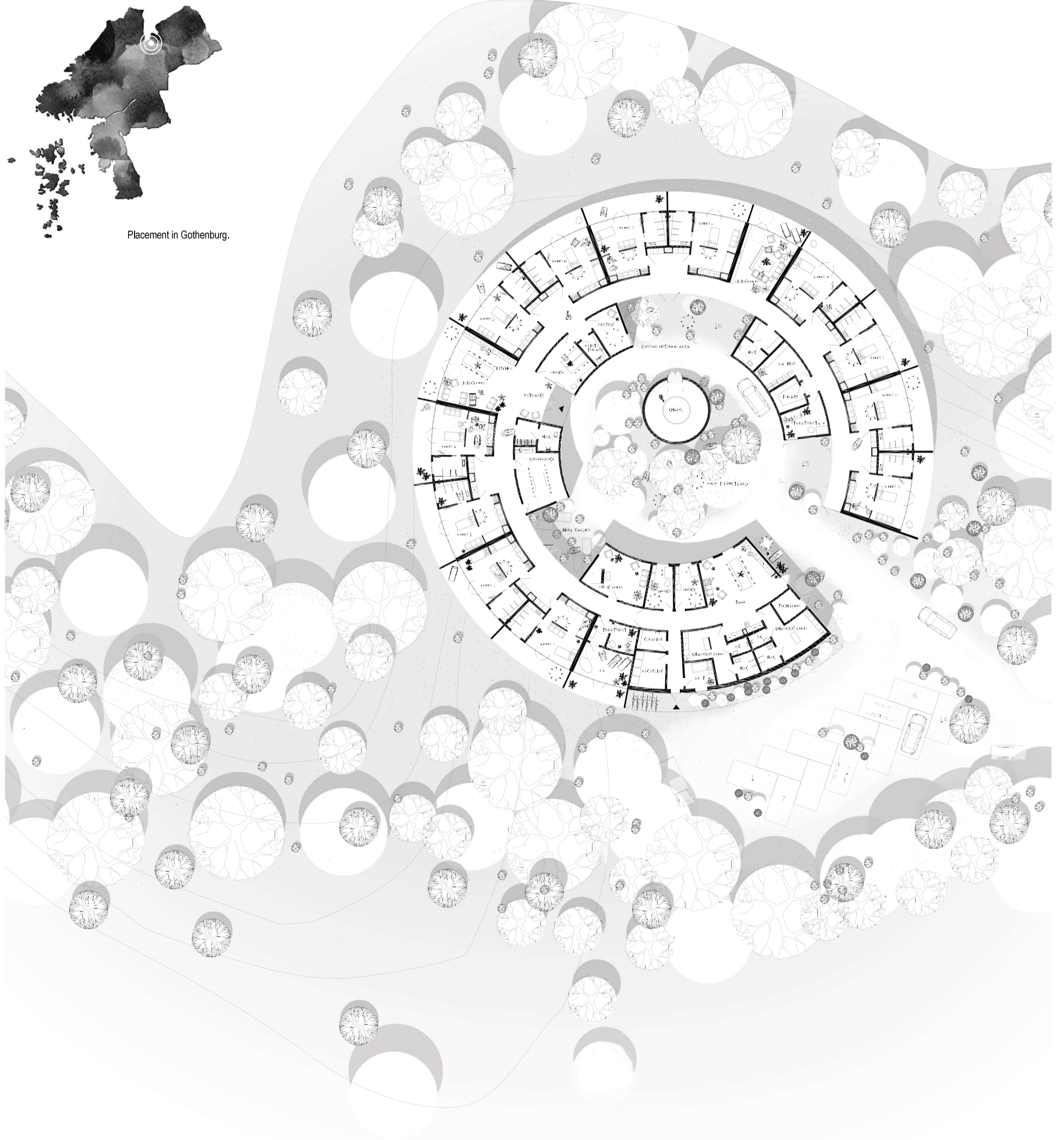
centre. It is an area where over 3000 apartments were built during the million homes programme in the 1970's. It was known as one of the areas in Sweden where unemployment and crime rates were the highest but has since 1997 seen a great transformation. Renovations of the existing houses, help with education and distribution of jobs as well as investments in green energy has made Gårdsten a more attractive area.

We want the building to be an addition to the development of Gårdsten. Placing the hospice by Kieller Lake activates the forest and the walking path around it and in that matter, brings it closer to Gårdsten and those who live there.



Picture over site. When working with dignity, the placement become an important element. What are they going to look at? The lake was an obvious choice for us.

site plan

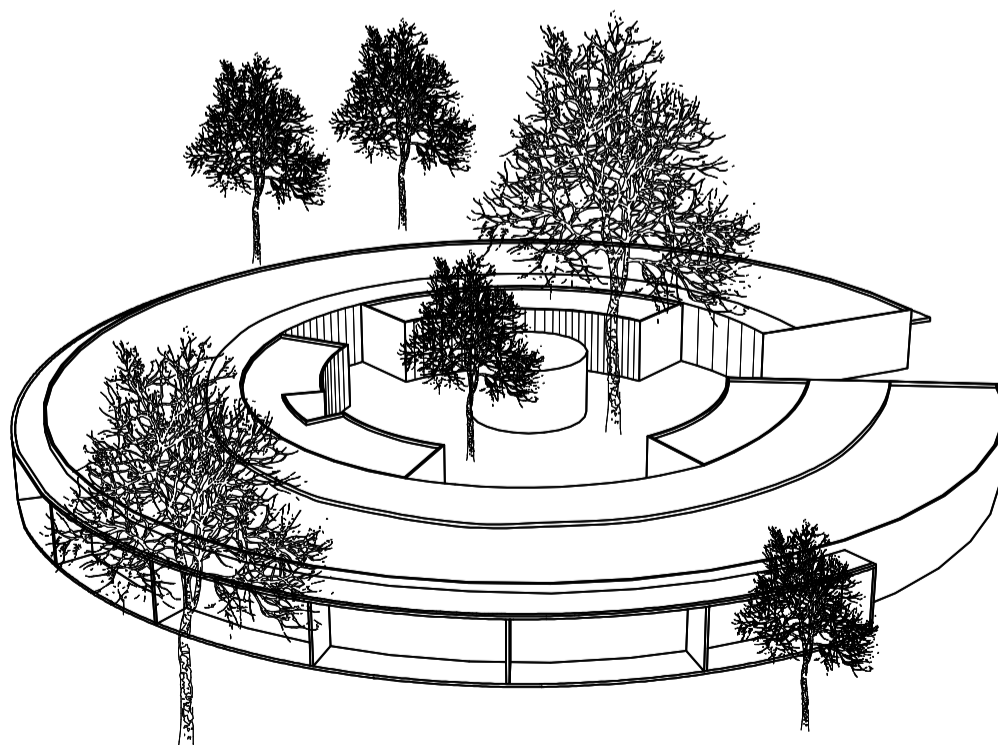
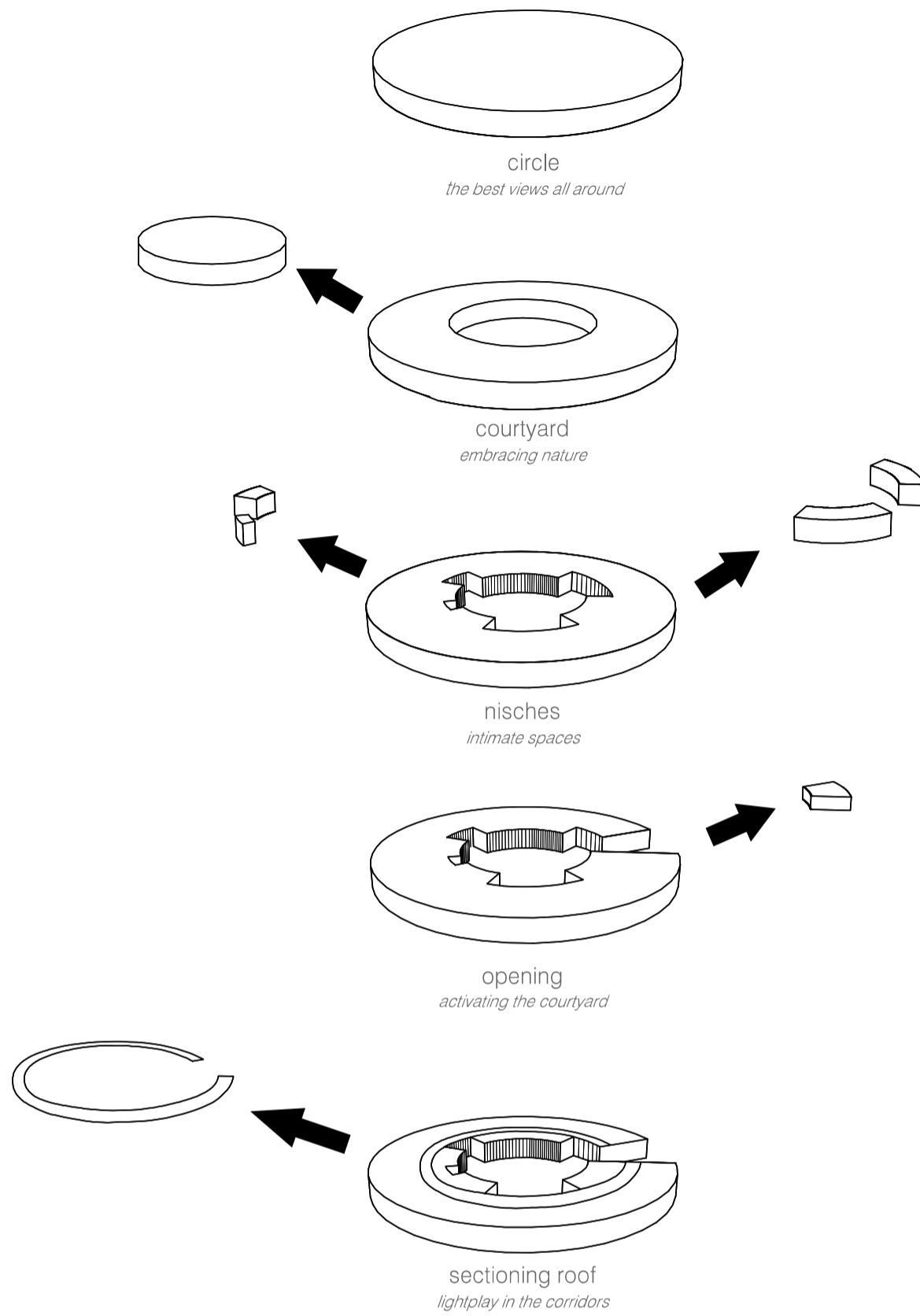


Placement in Gothenburg.

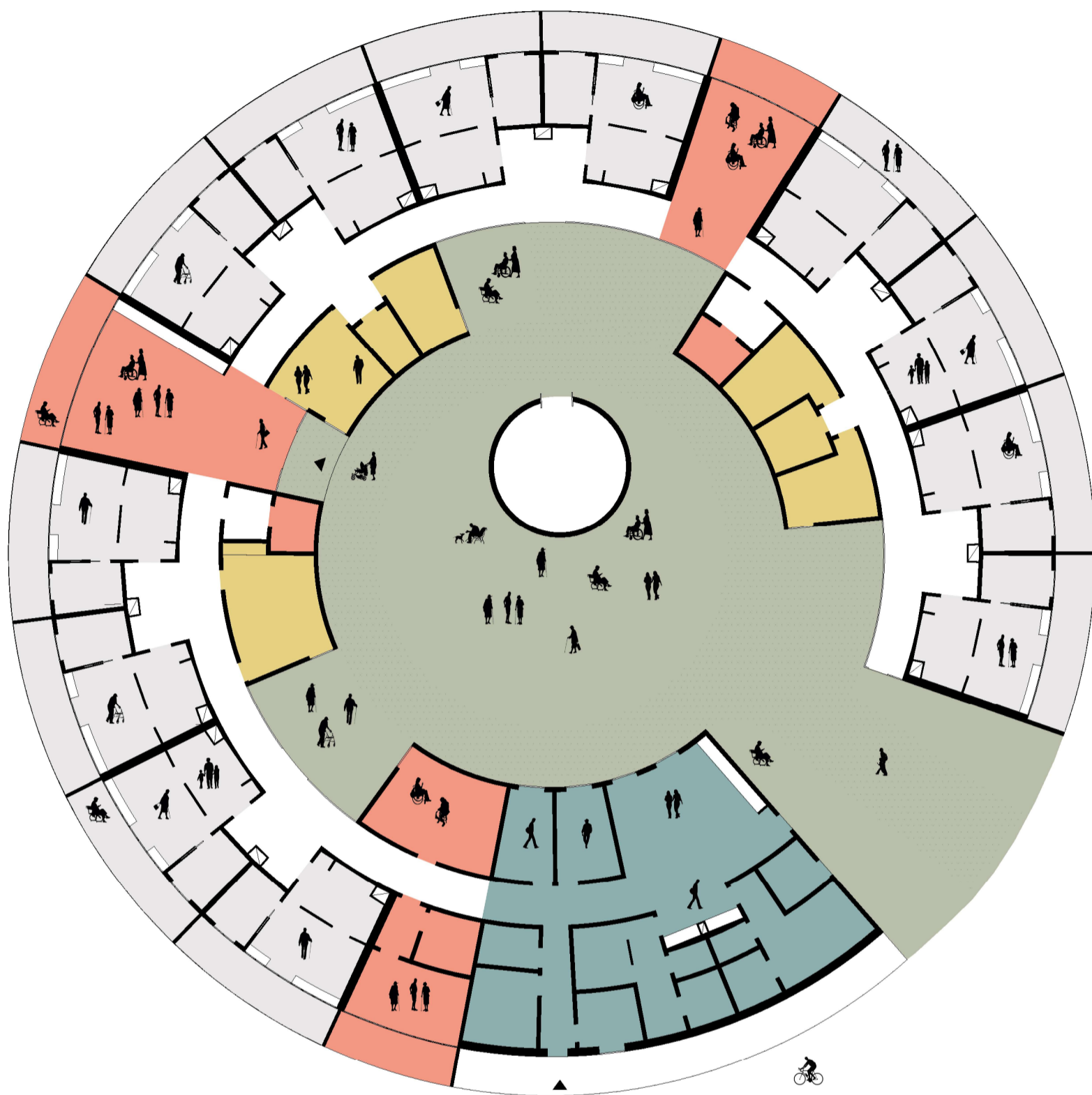
site plan 1:400



building taking shape



functions



Staff area off-duty
*A calm and secluded placement
with own entrance*



Common rooms
*Spread out with views over the
lake and contact with nature*



Private quest room
*Different levels of private and
views over the lake*

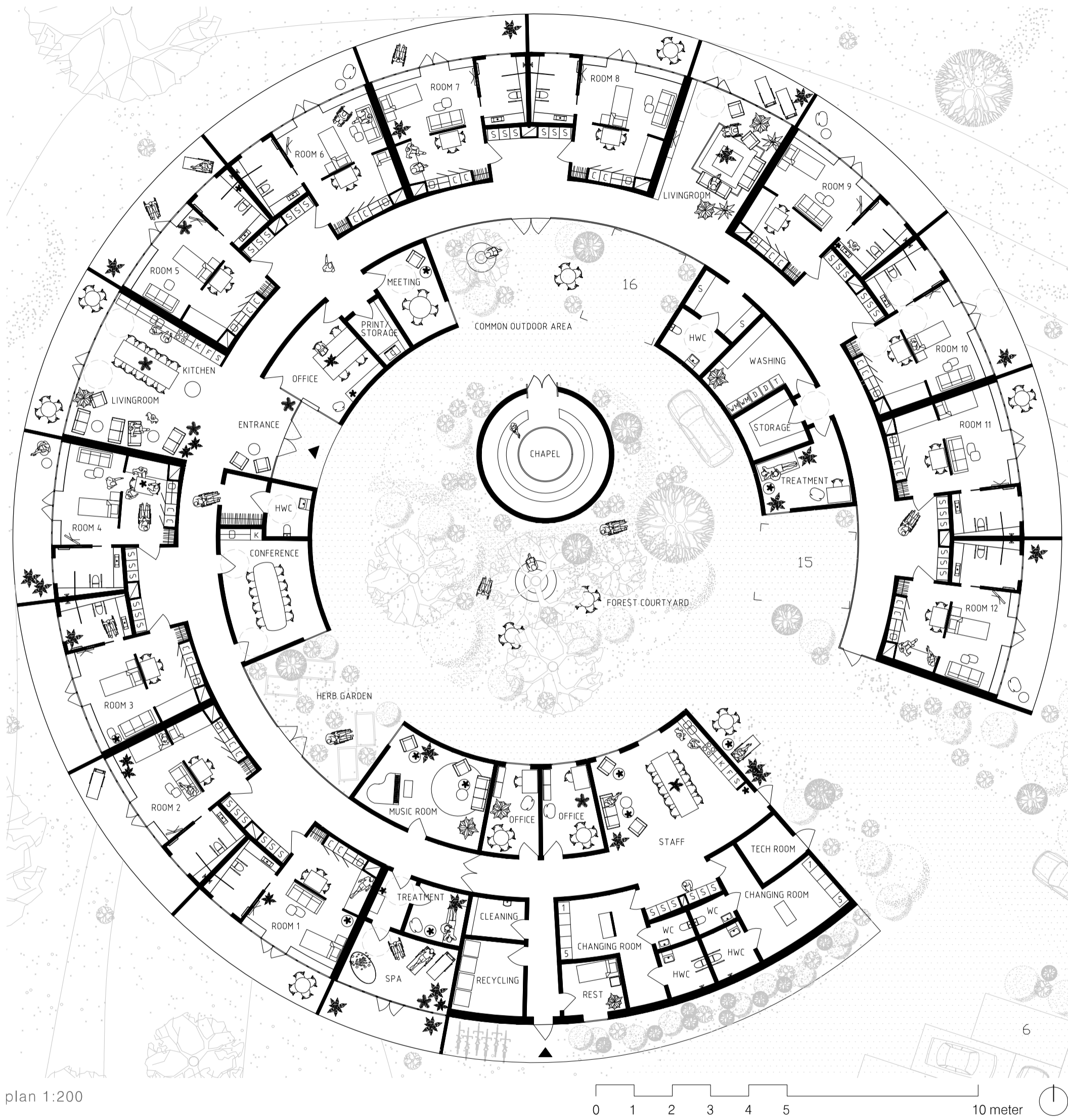


Outdoor areas
*Natural wilderness in the
center of the building*



Staff area on-duty
*Staff areas close to entrance
with overview*

floor plan



plan 1:200

You are met by an open circle when you arrive to the hospice. You can see through the entire building and feel the embrace. When entering the courtyard with the untouched nature, you are guided around the building to reach the entrance which opens up to the common kitchen and lounge area with a fireplace and views of the lake.

The rooms are divided in units by four, with common rooms in between. The round corridor creates spaces with variation in light and openness. Being in direct contact with the nature outside and being able to look out makes the corridor feel shorter and activated all around. The roof of the corridor is perforated to create a play of light both at day and night.

guest room

People are different and want different things. Some people have large families while some are alone. The rooms are flexible and can be furnished and used differently depending on the needs of the guest.

You enter the private room gradually in three steps. From the main round corridor, you have your own pre-hallway before walking into your room. You walk into the kitchen and eating area with closets, a kitchenette and a custom-built kitchen sofa that can be used as an extra bed. One step further is the living room with a bed and a couch which can also be used for stay-over guests. The room has windows from wall to wall to create a panorama view of the nature outside. The bathroom is placed next to the living room and in close contact to the bed to make caregiving easy and accessible.

Every room has a large, private balcony that looks over the lake and woods.



guest room

common areas



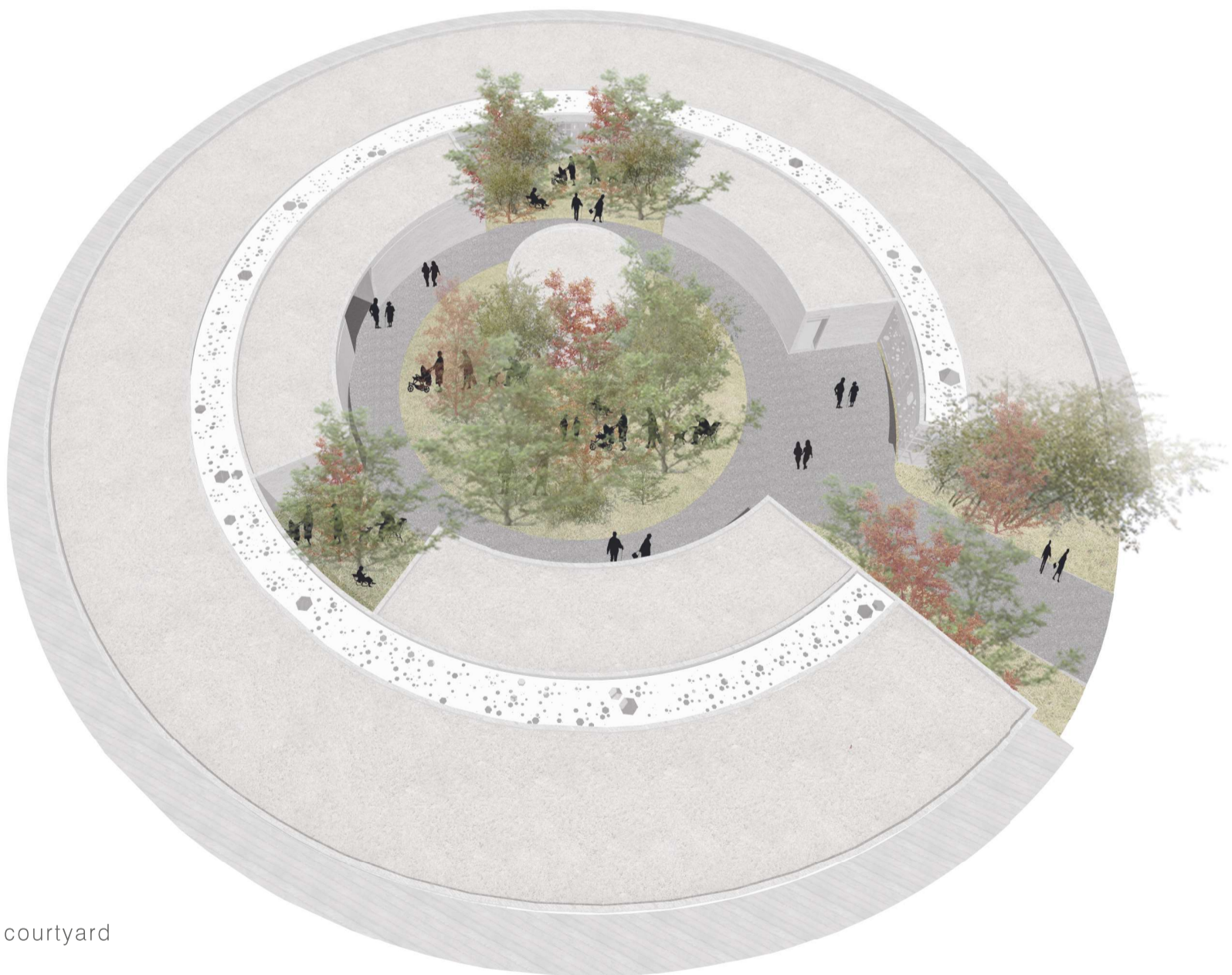


common kitchen and eating area



corridor and common living room

exterior visualizations



courtyard



facade 1:200



facade 1:50



section 1:50

model photos



building and site model



morning light



mid day



evening artificial lighting

structure and material



wooden pillars and beams



material palette: brick, wood, plaster (left to right)



entrance and courtyard perspective