

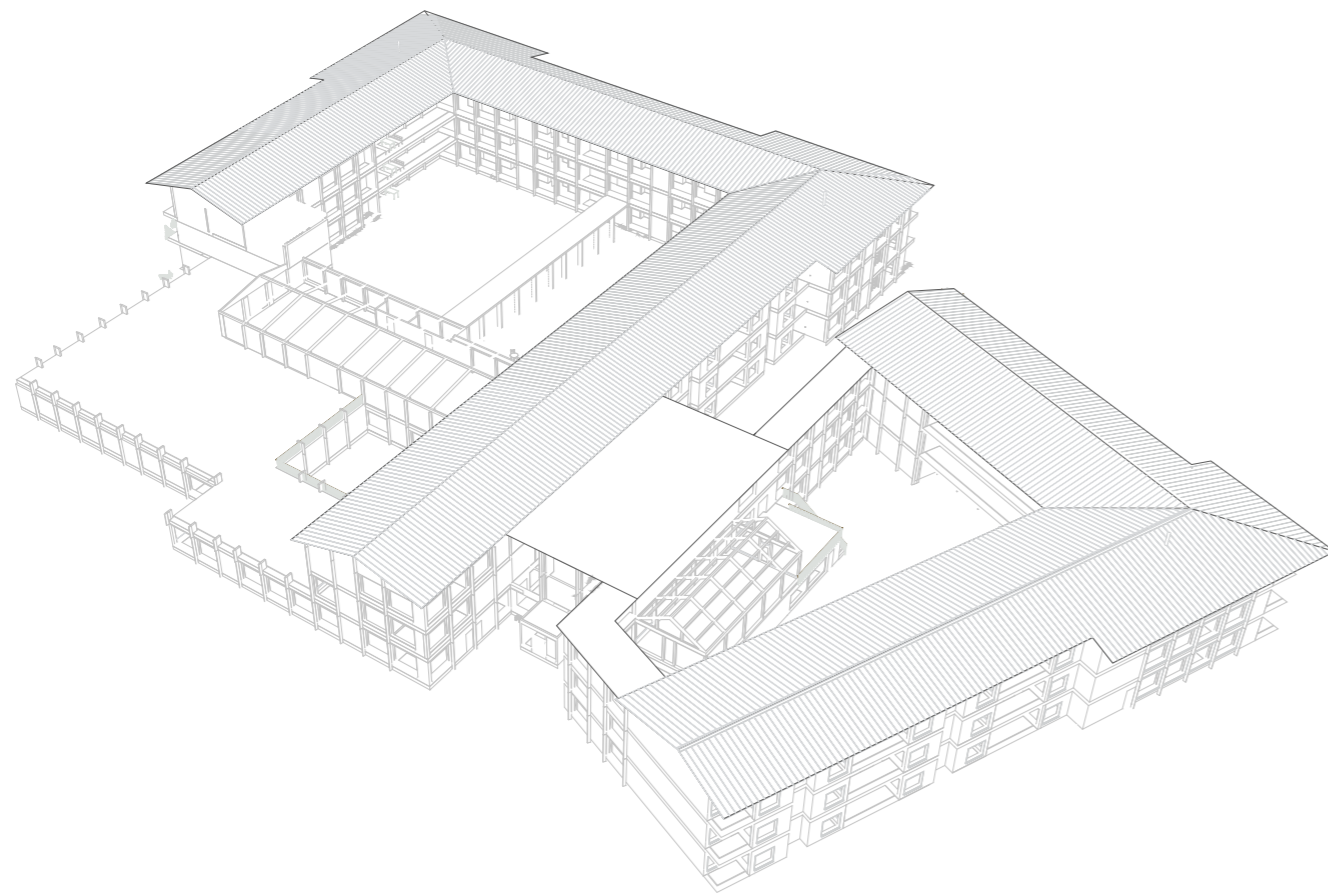


The Green Link

Embla Jensen, Prince Aboagye, Sandra Kärnstrand

Chalmers University of Technology, MPARC, Housing for Seniors

2020-12-16



Index

Site	3
Concept	4
The dementia perspective	5
Flows and zones	5
Situational plan	6
Plans	7-12
Sections	13
Elevations	14-15
Detail of facade	16
The unit	17-18
The apartment	19

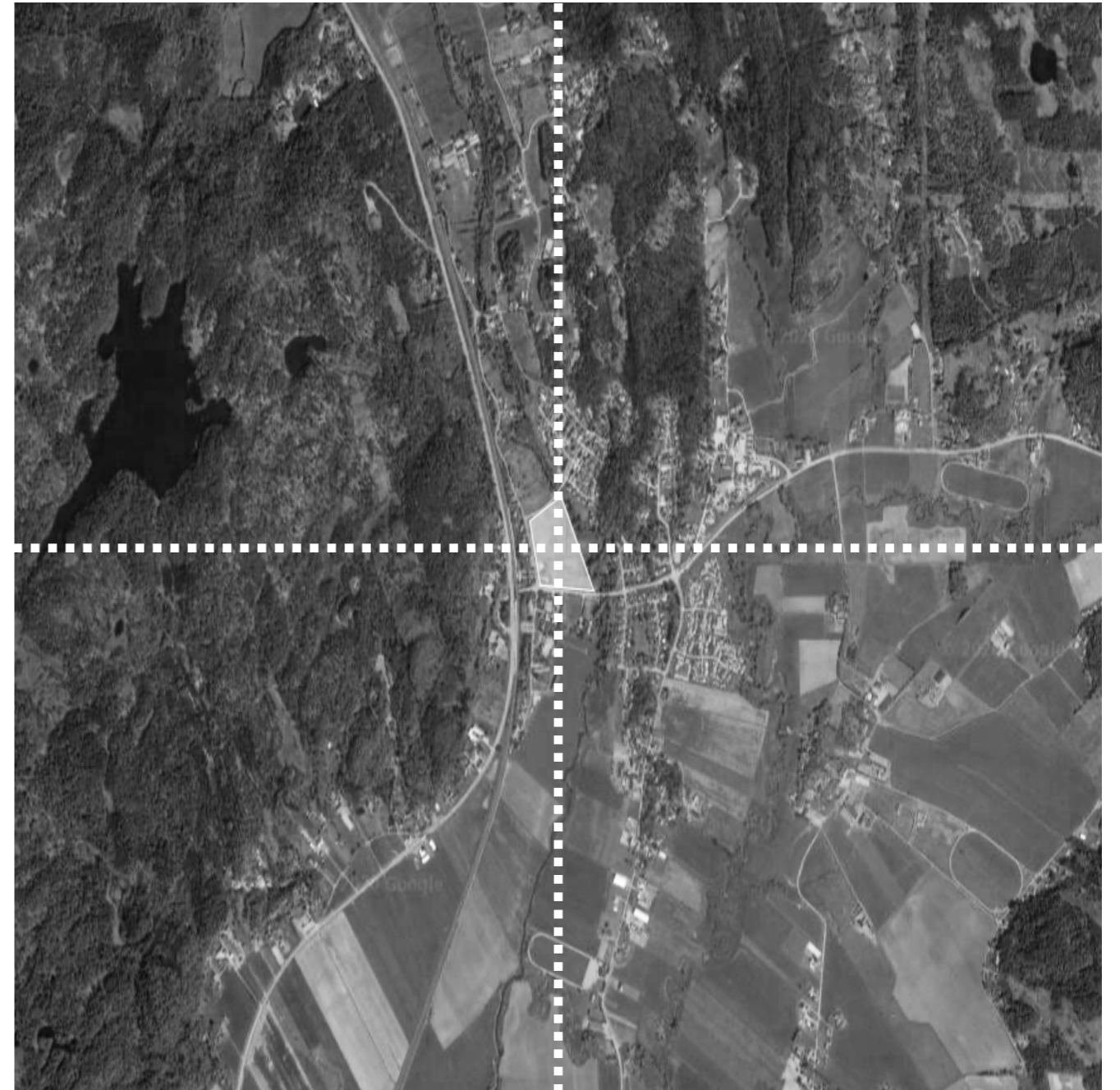
THE SITE

Anneberg

The site is located in Anneberg, Kungsbacka municipality, approximately 30 minutes outside of Gothenburg. There are good communication opportunities to the city through a train station in direct connection with the site. Historically, the area has served the purpose of farming fields and is today undeveloped meadowland. The area is planned for development, particularly for residential buildings, a preschool and housing for seniors. This project is a proposal of the two latter. The site provides many green areas, it is surrounded by high hills and is intersected by a creek, which provides good connections with nature—a starting point of this project.



*Photo: Öberg, Ingela
Hallands kulturhistoriska museum*



CONCEPT

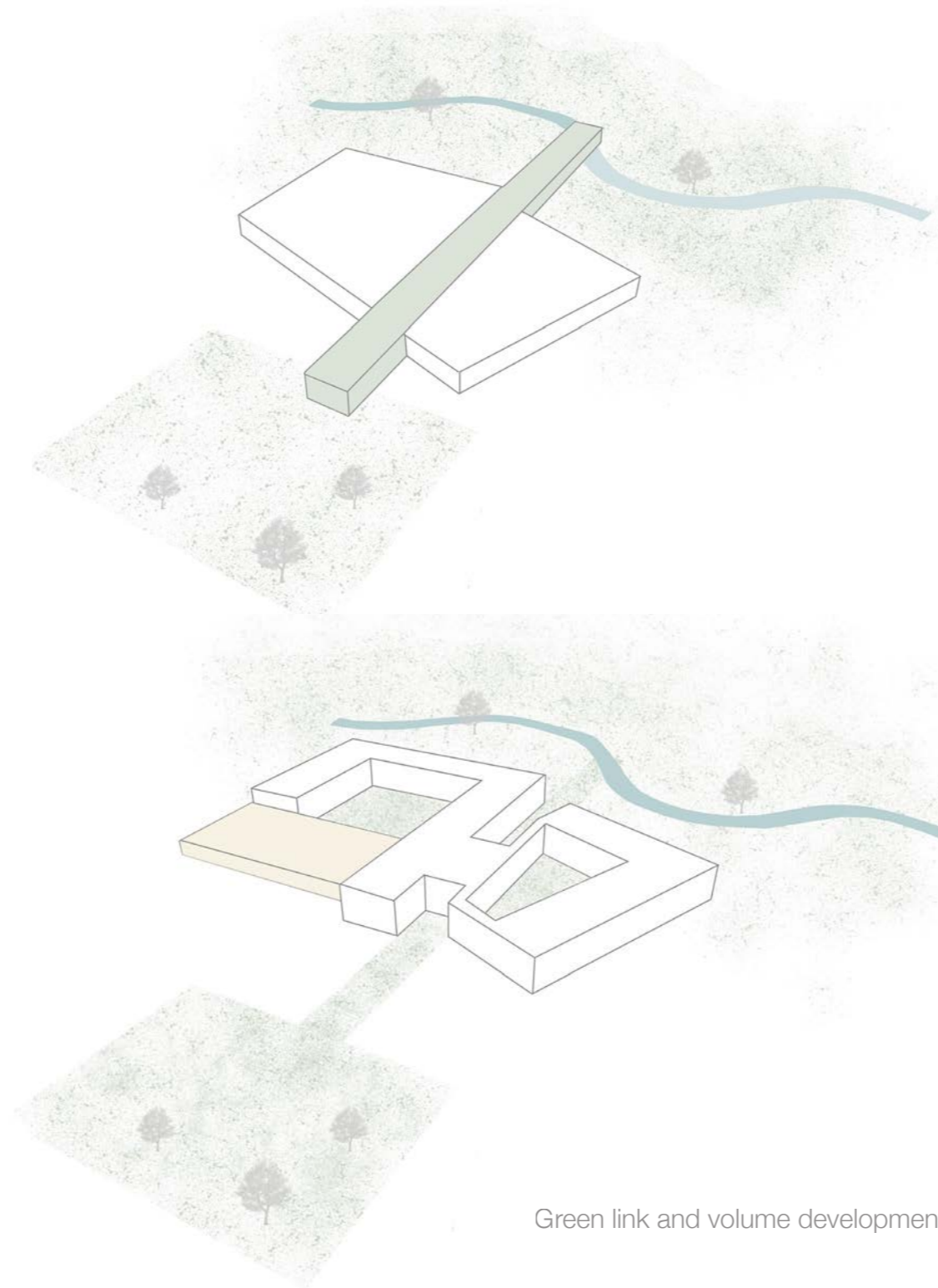
The green link

The green link concept provides an interaction between the surrounding neighbourhood and the dementia village. Connecting the western planned square with the eastern creek, it provides access to nature for both staff, residents and the neighbourhood. Several public functions and activities are provided within the entrance area when passing the green link.

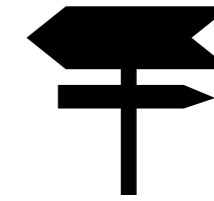
At the eastern end of the link, a platform with seating possibilities are provided to access the sloping natural landscape as well as the creek. In addition, several courtyards with different characteristics are added to the project for the residents.

The green concept mainly has a health promotive purpose, but it also connects to the history and identity of the site as farming land. By increasing views and access to green outdoor spaces, it will hopefully have several health promotive advantages and encourage people to be outdoors.

The courtyards are designed with different characteristics, from planned to more organic. The northern one includes space for activity, for example, barbecue, boule or outdoor seating for the restaurant. It also provides a playground for the preschool, a space in which the elderly and children can meet and interact. The northwestern courtyard is dedicated as a play area for the preschool and the southern courtyard is planned as a relaxation space. On top of the preschool, there is a roof garden for farming and another roof garden is located at the southern courtyard. In order to increase access to outdoor spaces all year round, two winter gardens are provided.



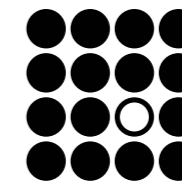
Green link and volume development



Wayfinding

Wayfinding

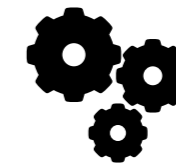
Central core
Orientation marks
Circulation



Support Independence

Support independence

Qualities in apartments
Provide activities
Safe access to outdoor spaces
Microspaces/nooks



Stimulation and activity

Stimulation and activity

Provide various activities
Space for informal activity
Material and textures
Invite public
Access to outdoor spaces



Connect to nature

Connect to nature

Farming
Courtyards with different character
Views
Balconies
Wintergarden

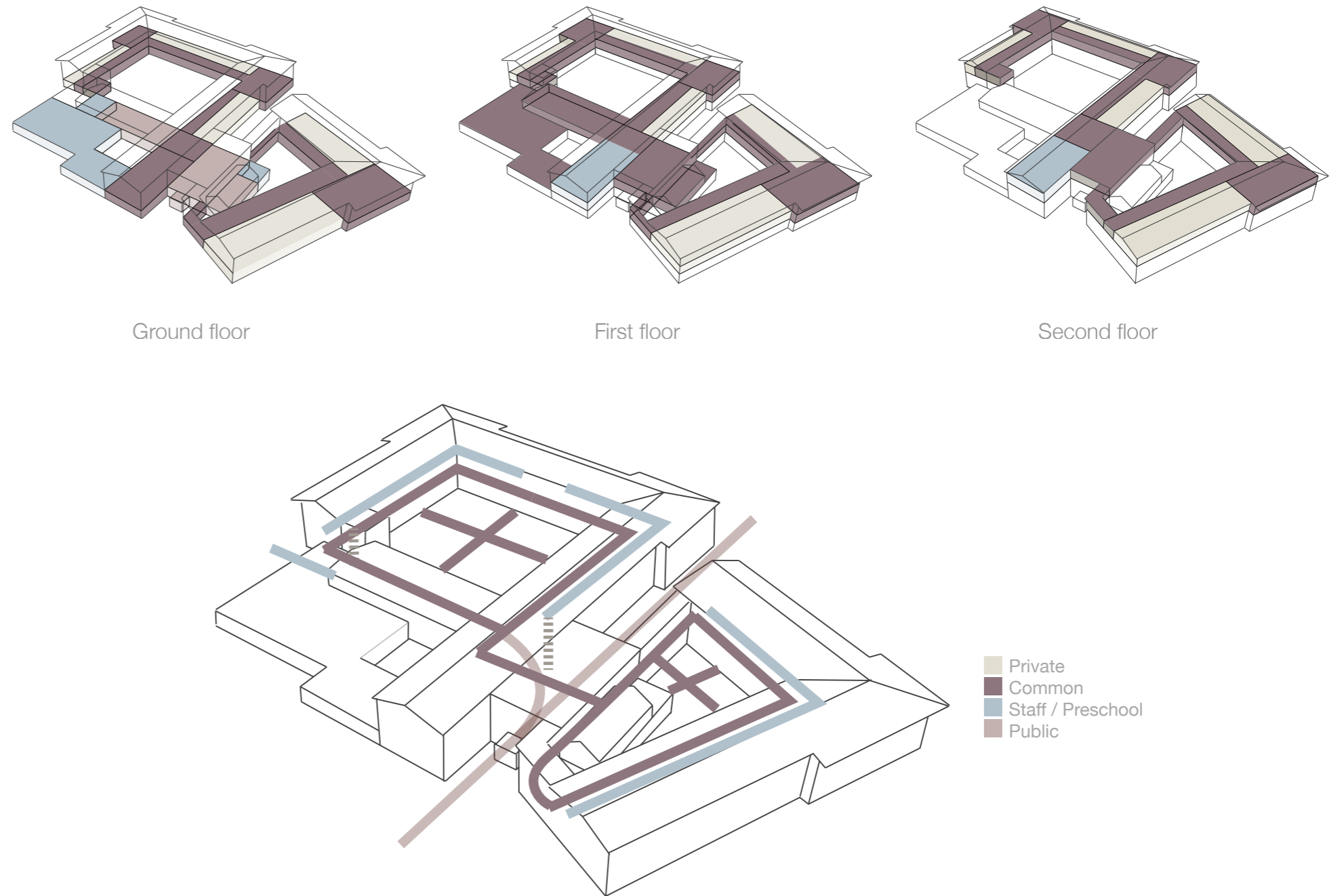
THE DEMENTIA PERSPECTIVE

The project brief is a dementia village, which is addressed at several scales of the project. At a general level, the building is designed with a central core to facilitate wayfinding. The interconnected building blocks are planned for circulation to lead the residents back and avoid disorientation. The single corridors and views towards courtyards further provide orientation marks.

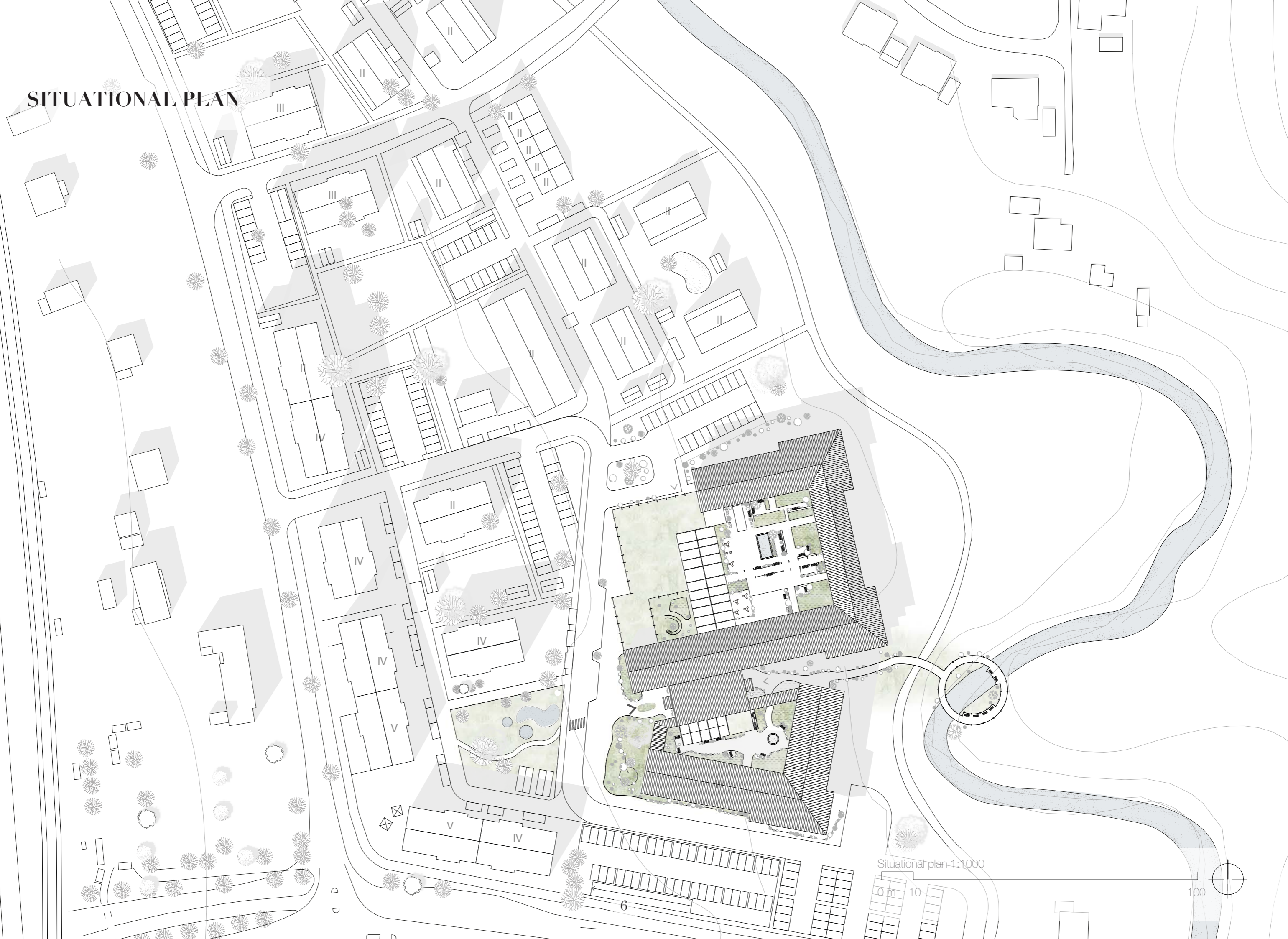
Views and access to outdoor spaces are planned for health promotion. The outdoor courtyards are all framed for safety reasons and circular platform at the end of the green link is designed to lead the users back to the facility. The walkability within the village, nooks as well as activities provided, aim for stimulation for the senses.

Within the units, the number of doors to service areas are limited to avoid confusion for the residents. Corridors are planned to avoid dead-ends and windowsills are broaden to act as seating areas. Common areas are located centrally within the units to provide good overviews from the staff. Outside of each apartment, there are semi-private niches for the residents to furnish in order to support wayfinding to the private apartments. Within the apartments, a railing from the bed to the bathroom is placed to avoid falling accidents.

FLOWS AND ZONES



SITUATIONAL PLAN



Situational plan 1:1000

0 m 10

100

PLAN

Ground floor

The main entrance is intersecting the green link and compose a central core. From this zone, several public and common functions can be reached in order to attract the surrounding neighbourhood to enter the building. The preschool has a central location within the project and several spaces for interaction between the elderly and the young are provided. The delivery zone is located at the northern side, in direct connection with the restaurant and kitchen.

Entrance zone

1. Main entrance
2. Foyer
3. Café
4. Reception
5. Elevator

Units

6. Apartment
7. Electricity
8. Laundry
9. Staff WC
10. Storage
11. Waste
12. Cleaning
13. Terrace
14. Common space
15. TV-room
16. Kitchen

Activity space

17. Art/music room
18. Spa
19. Dressing room
20. Gym
21. Hairdresser

Kitchen

22. Restaurant
23. Dish room
24. Preparation room
25. Freezer room
26. Fridge room
27. Storage
28. Waste room

Support areas

29. Delivery
30. Storage
31. Storage garden furniture
32. Storage of outdoor wheelchairs
33. Cleaning

Preschool

34. Preschool with courtyard

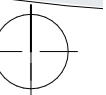
Outdoor environment

35. Bike parking
36. Courtyard
37. Terrace
38. Playground
39. Pond
40. Flex area
41. Garden
42. Boule
43. Barbecue
44. Pergola



Plan 1:500

0 m 10 50





PLAN

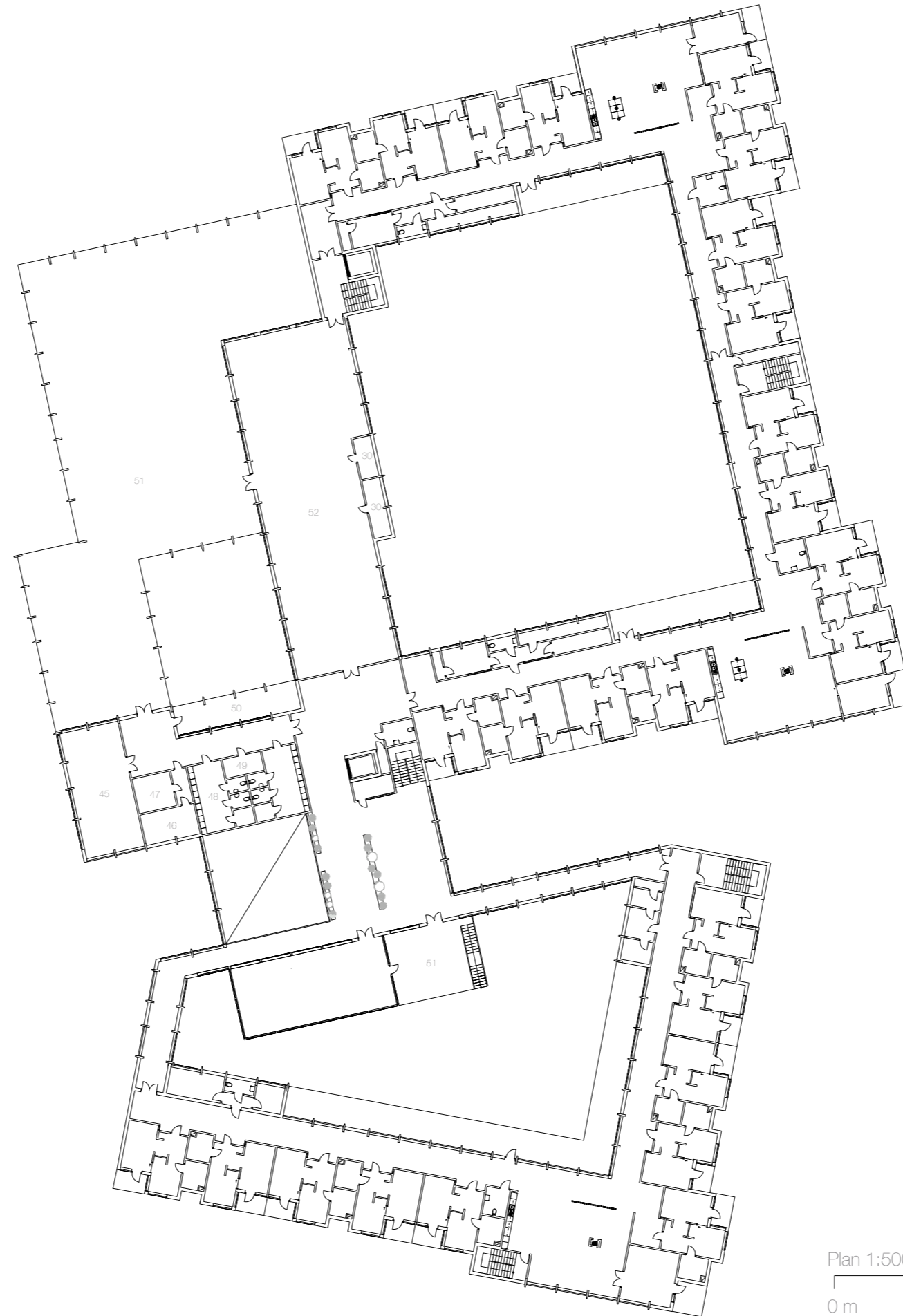
First floor

Staff area

- 45. Staff room
- 46. Laundry
- 47. Storage
- 48. Dressing room
- 49. Cleaning
- 50. Balcony

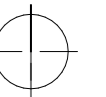
Activity space

- 51. Roof garden
- 52. Winter garden



Plan 1:500

0 m 10 50





PLAN

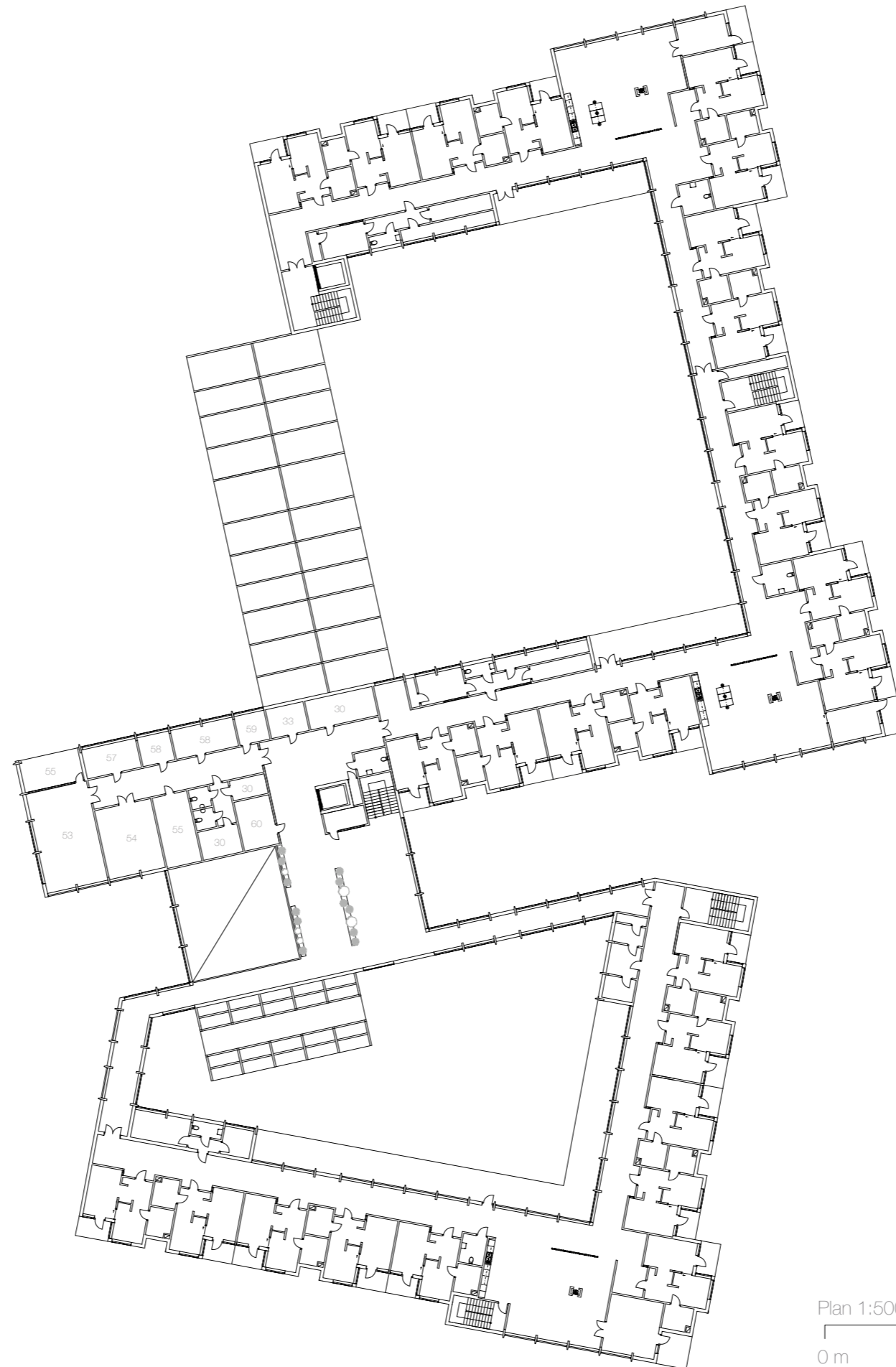
Second floor

Administrative area

- 53. Open office
- 54. Conference room
- 55. Drug storage
- 56. Balcony
- 57. Manager office
- 58. Meeting room

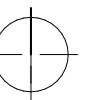
Treatment rooms

- 59. Therapy room
- 60. Dental care / Flexiroom



Plan 1:500

0 m 10 50



PLAN

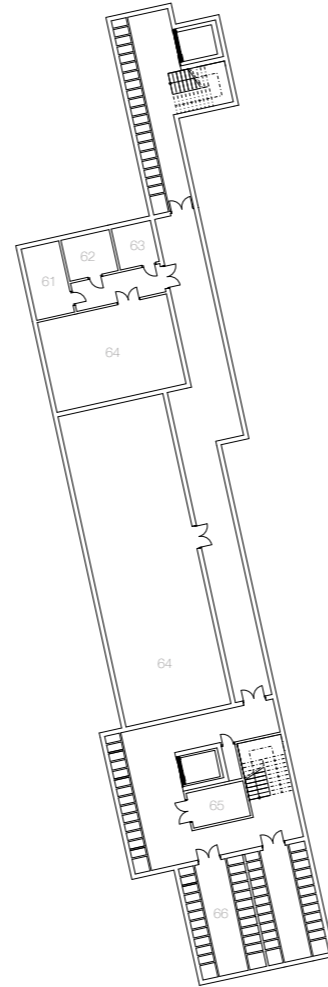
Basement

Technical rooms

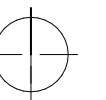
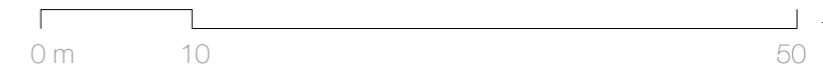
- 61. Incoming electricity
- 62. Incoming district heating
- 63. Sprinkler room
- 64. Ventilation
- 65. Waste room assisted living

Support areas

- 66. Storage tenants



Plan 1:500



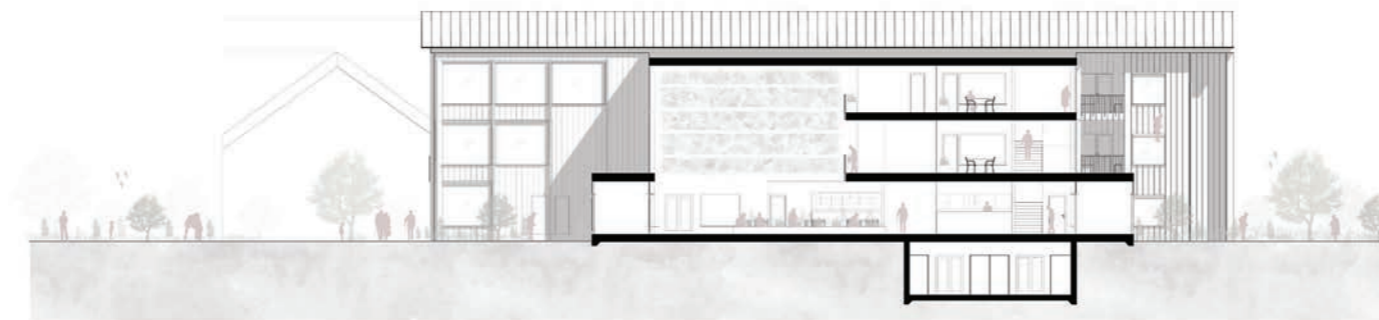
SECTIONS



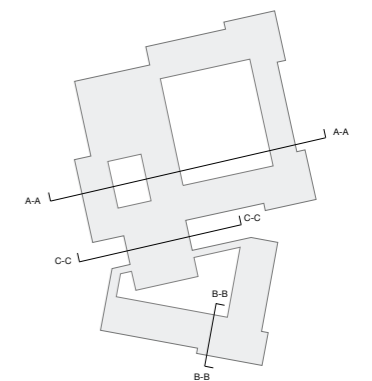
Section A-A



Section B-B



Section C-C



Scale 1:400

0 m 10 40

ELEVATIONS



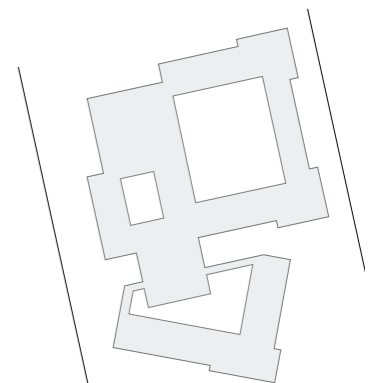
West elevation



East elevation

Scale 1:400

0 m 10 40



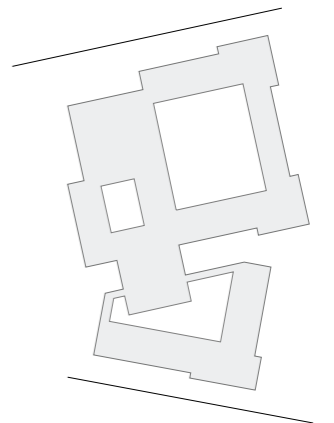
ELEVATIONS



North elevation



South elevation



Scale 1:400



DETAIL

Facade

The façade material is wood, which is represented in the upcoming surrounding buildings.

There is a difference between the façades facing the surrounding neighbourhood and the façades facing the courtyards.

The façades facing the surroundings have wooden ribs on them, that are slightly angled. This gives a thinner impression.

The façades facing the courtyards is to a larger extent glassed to provide views from corridors to courtyards. The wooden panel is also smooth, without these wooden ribs, as it comes closer to the people using the courtyards.

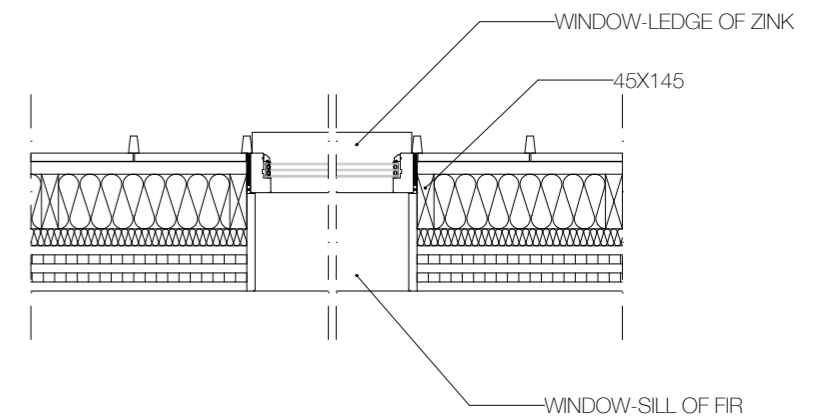
In addition to this, wooden pillar façade elements also breaks up the façade and gives shade to the windows while also creating nooks in the corridors.

The railing of the balconies is a part of the façade and are made out of wooden ribs. The paneling in the balconies are smooth as on the façades facing the courtyards.

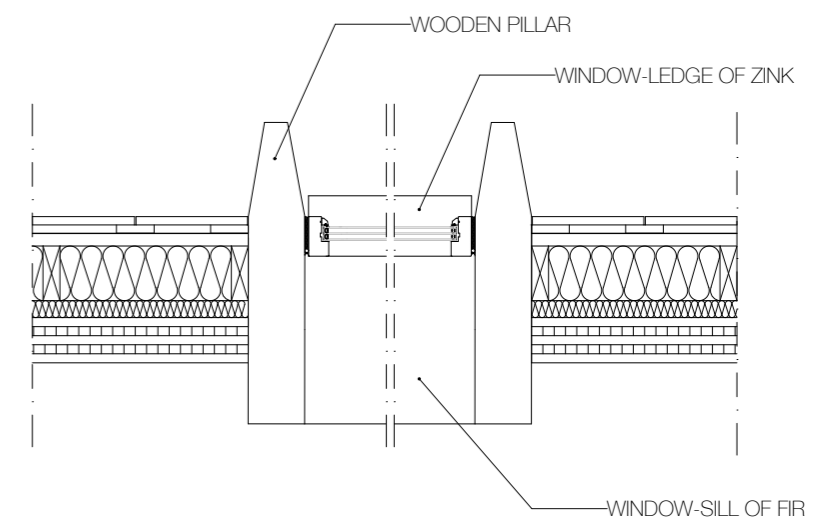
The roof is a pitched metal roof, as a nod to the surroundings and to traditional architecture in the swedish countryside.



Facade facing the surrounding neighbourhood



Facade detail horizontal, towards surroundings
Scale 1:20

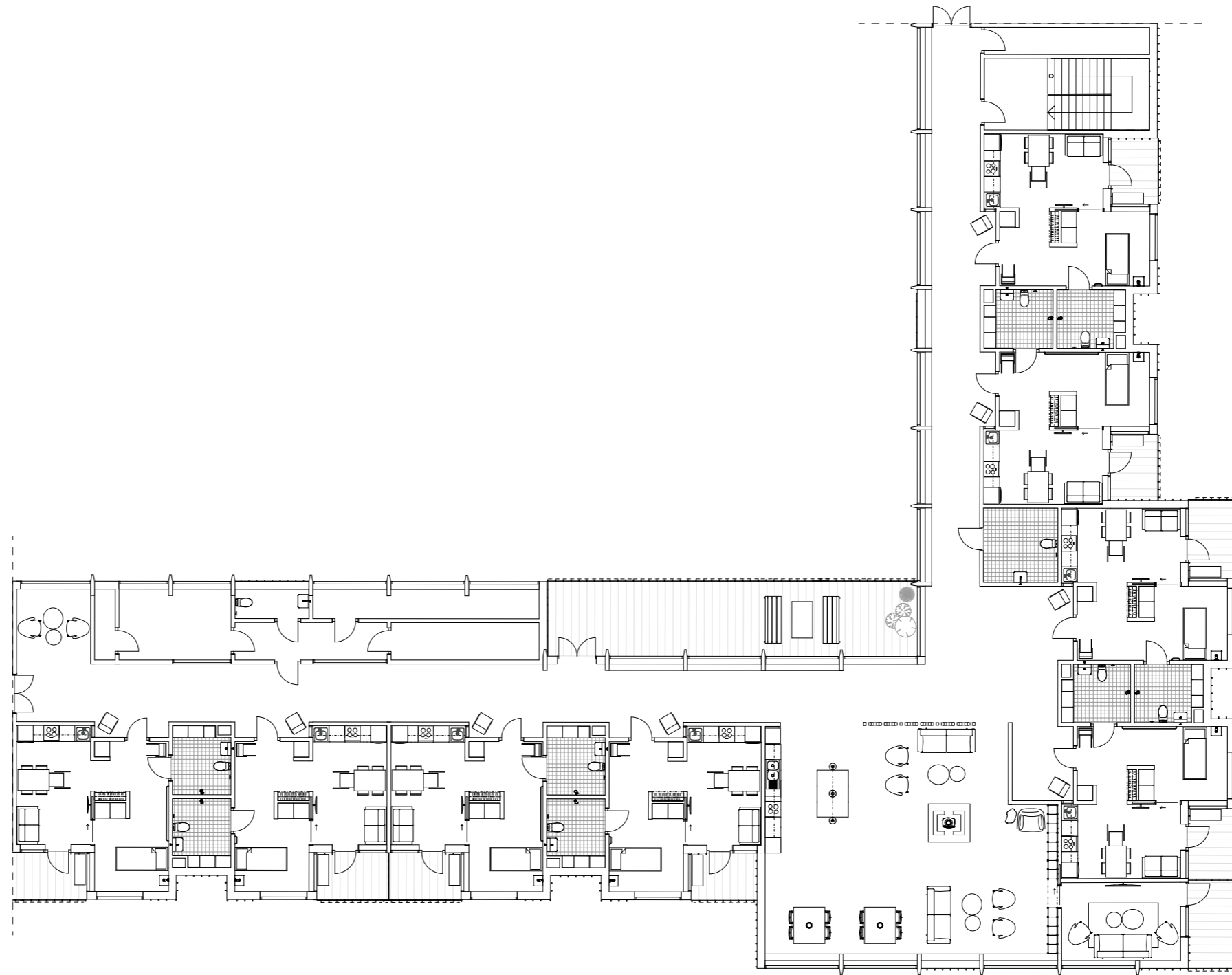


Facade detail horizontal, towards yards
Scale 1:20

PLAN

Unit

The rooms in all units are facing the outer surroundings. Common rooms are located with a good overview of corridors and are provided with daylight from two directions. The common spaces are designed with a gradient: low sill heights for seating in windows create social spaces within the corridor, dining area and social space with a fireplace are semi-open to the corridor and a tv-room can be closed off. Balconies are facing two directions to maximize views and sunlight opportunities. Service areas are gathered together and doors towards the corridors are minimized.



Unit floor plan 1:200

0 m

5

20

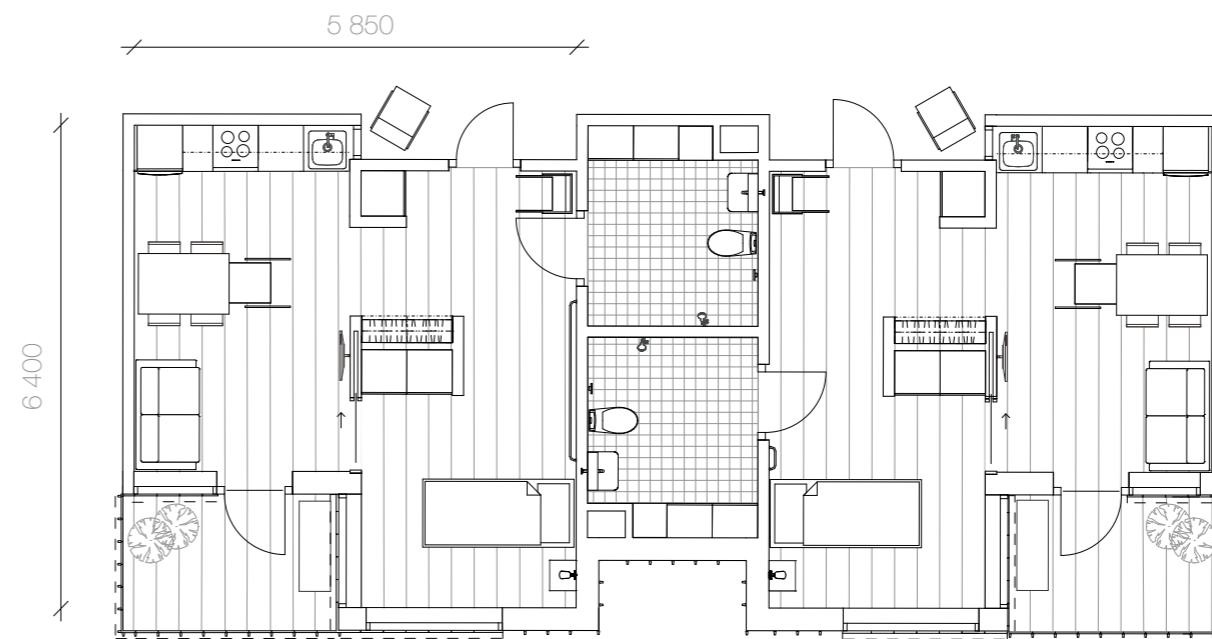
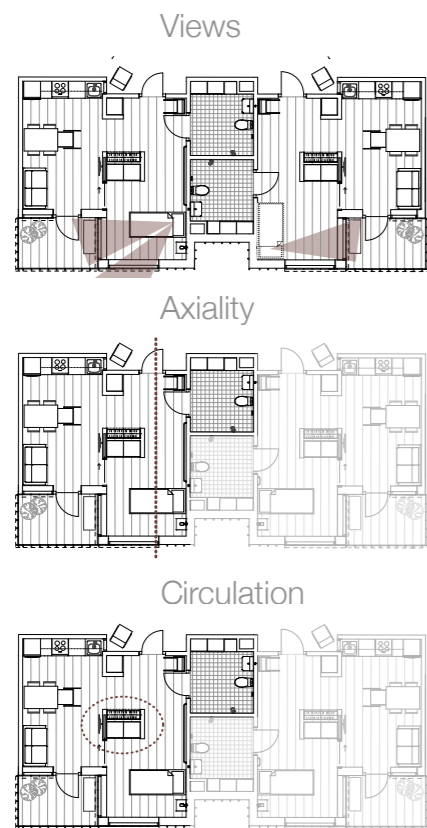




PLAN

Apartment

The apartments of 35 square meters are all provided with a small kitchen, private balcony and bedroom with possible division from the living room. The entrance to the common corridor is designed with a semi-private niche to be individualized and support wayfinding. When entering the apartment, sightlines are provided to both the bed and to outdoor environments. A hallway gives several storage opportunities. The bedroom gives views and daylight from two directions to still be able to provide outdoor views from the bed if it is rotated. The sill height of the windows is low to enable outlooks when sitting or lying in bed. A hand railing is placed at the head end of the bed to the bathroom to prevent falling accidents (Ulrich, 2012). The bathrooms are further designed with generous storage space. The central island fulfils several purposes: space for a bench and hat shelf for the entry hall, storage for the bedroom, space for the rotatable tv, a possibility to close off the bedroom and creates a circulation in the apartment.



Room floor plan 1:100





Embla **Jensen**, Prince **Aboagye**, Sandra **Kärnstrand**
Chalmers University of Technology, MPARC, Housing for Seniors

2020-12-16